

# AP Manage II platform V 2.10 Installation Manual

## System Requirements

- Computer system with Windows XP/2000/2003/Vista
- At least 128MB of memory and a 500MHz processor

## Minimum software Requirements

- PostgreSQL Server
- PostgreSQL ODBC Connector (postgreodbc)

## Installation Procedure

- PostgreSQL Server Installation
- PostgreSQL ODBC Connector Installation
- AP Manager II Installation
- Install AP Manager Module

# Installation Procedure

Before installing AP Manager II on your computer, you must first install PostgreSQL Server and PostgreSQL © ODBC Connector. During the AP Manager II install process, AP Manager II will check if these PostgreSQL programs have been installed. If they are not found, you will be reminded to download them.

## PostgreSQL® Server

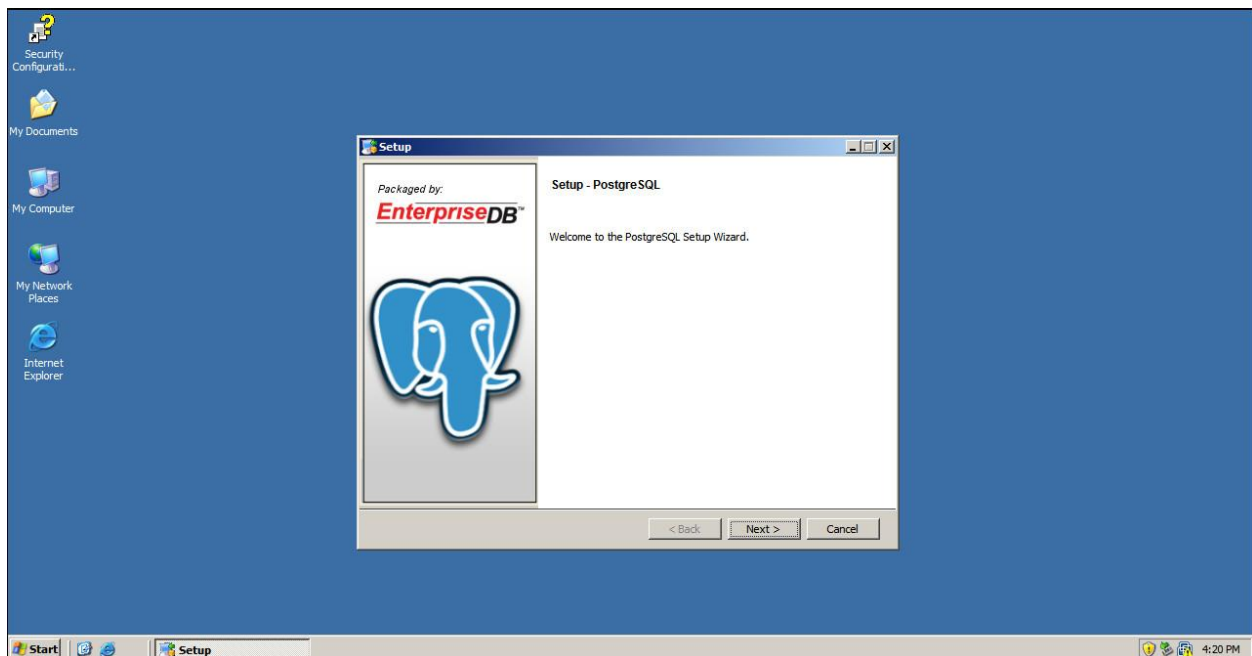
<http://www.enterprisedb.com/products-services-training/pgdownload>

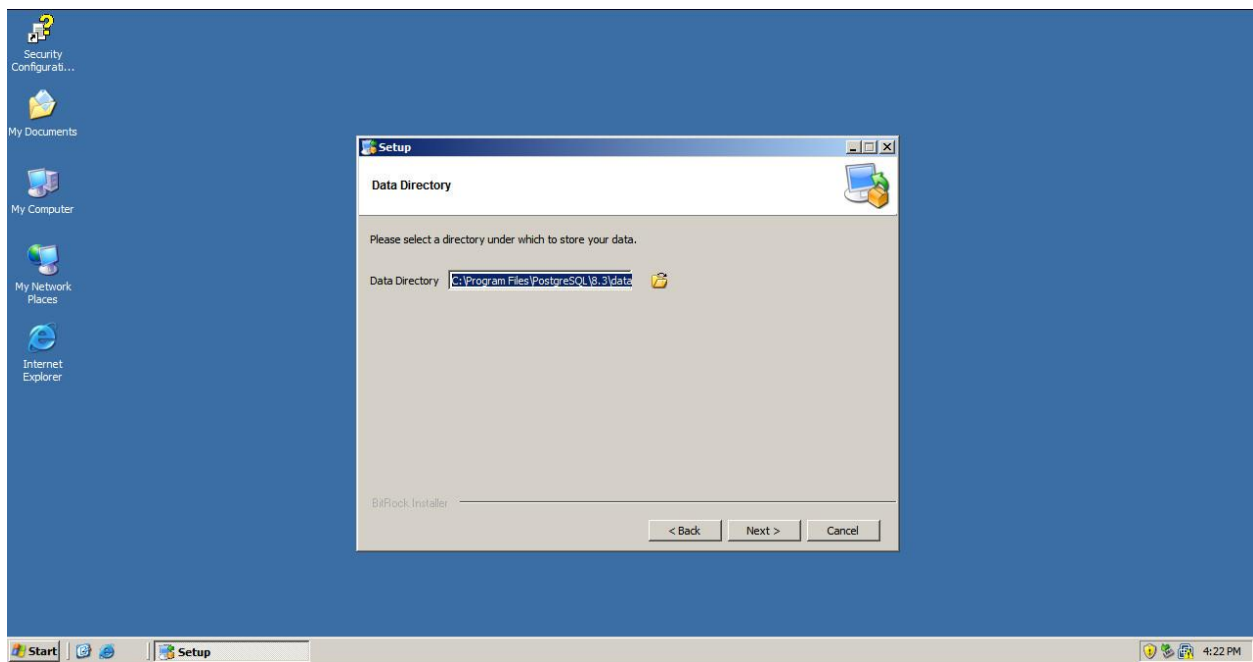
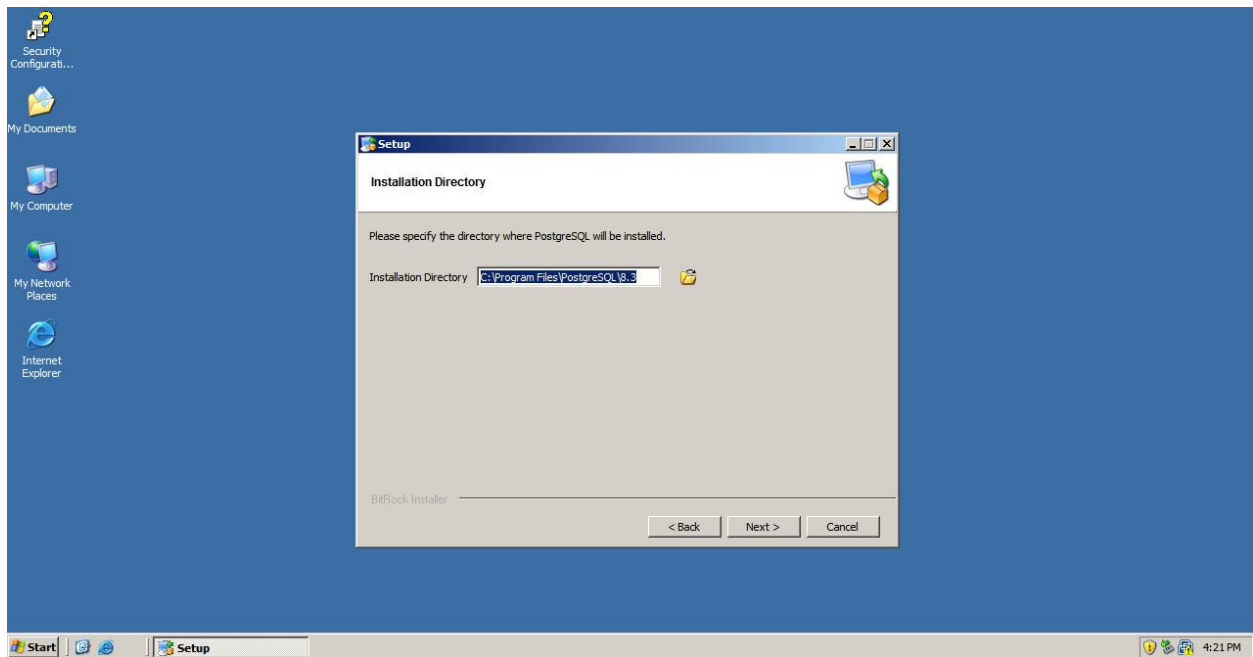
## PostgreSQL® ODBC Connector

<http://www.postgresql.org/ftp/odbc/versions/msi/>

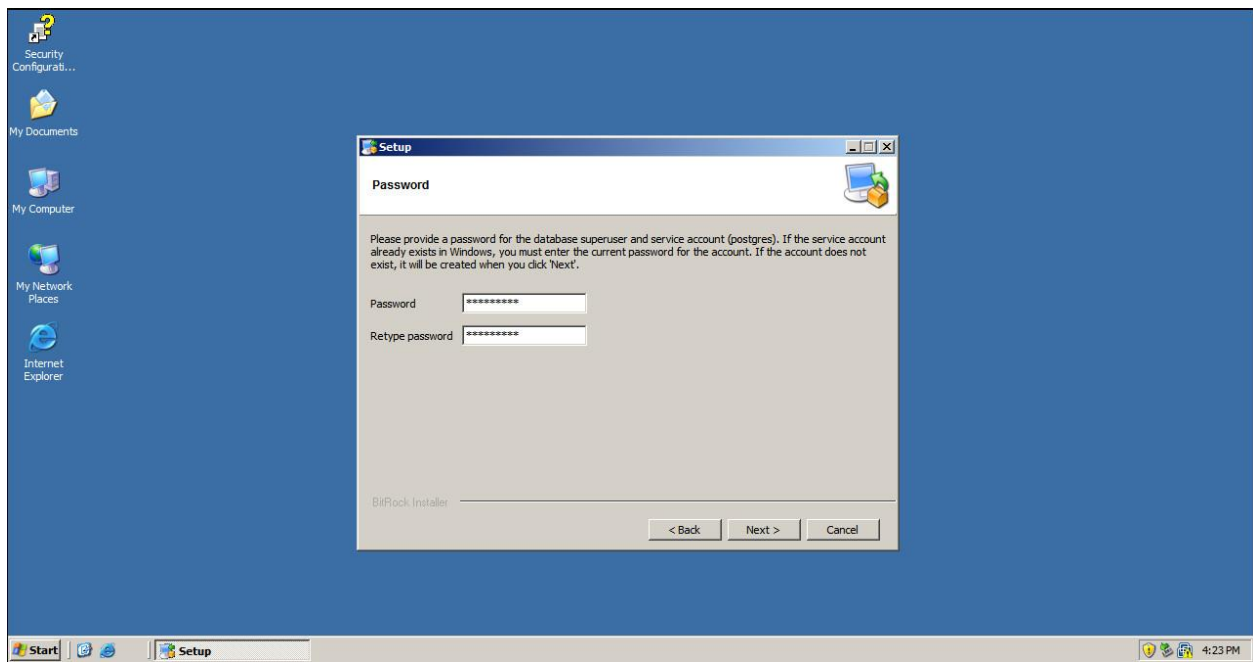
- PostgreSQL Server Installation

Installing PostgreSQL, click Next button

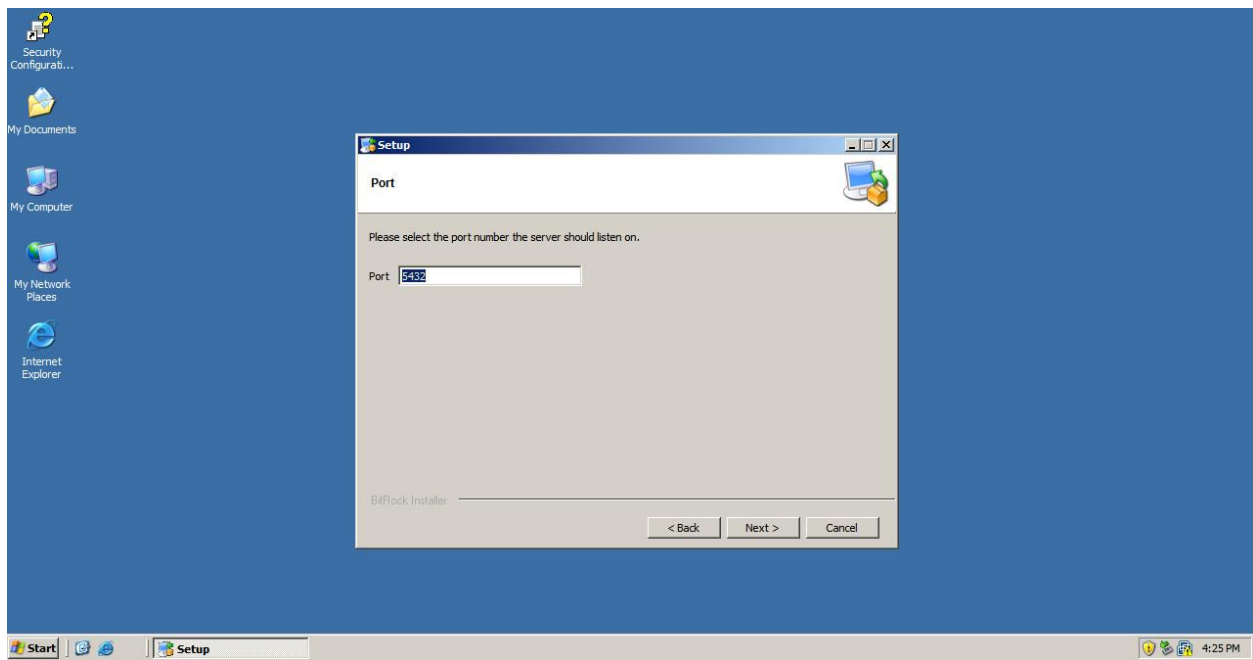




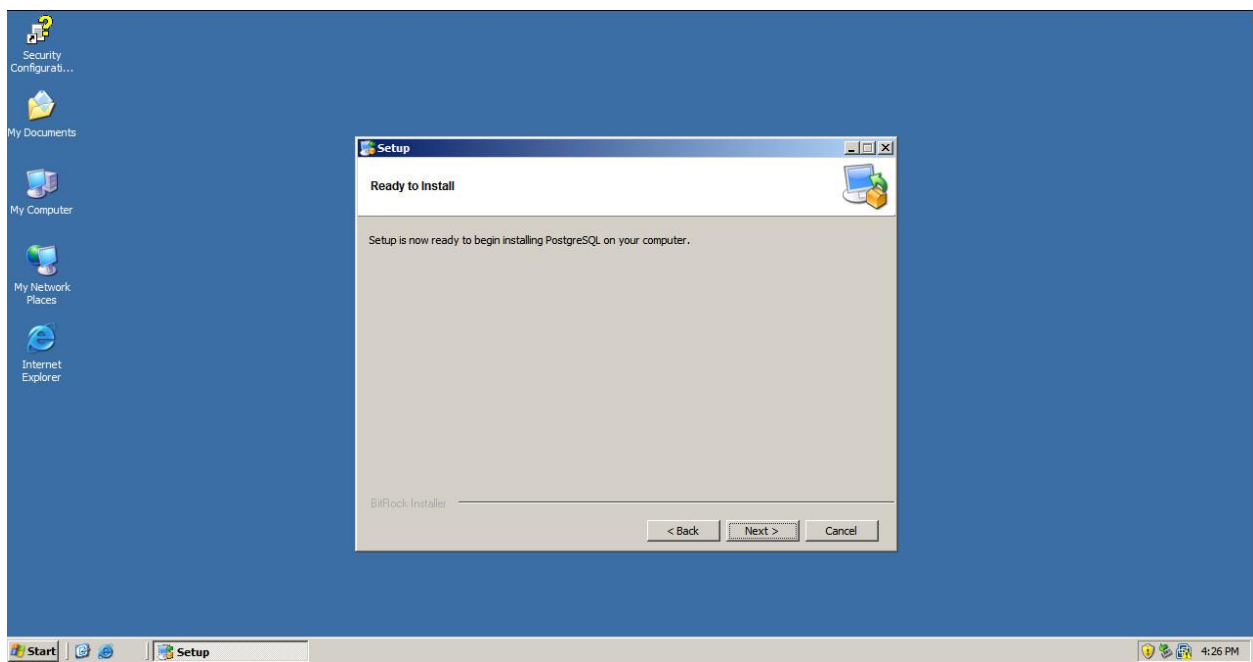
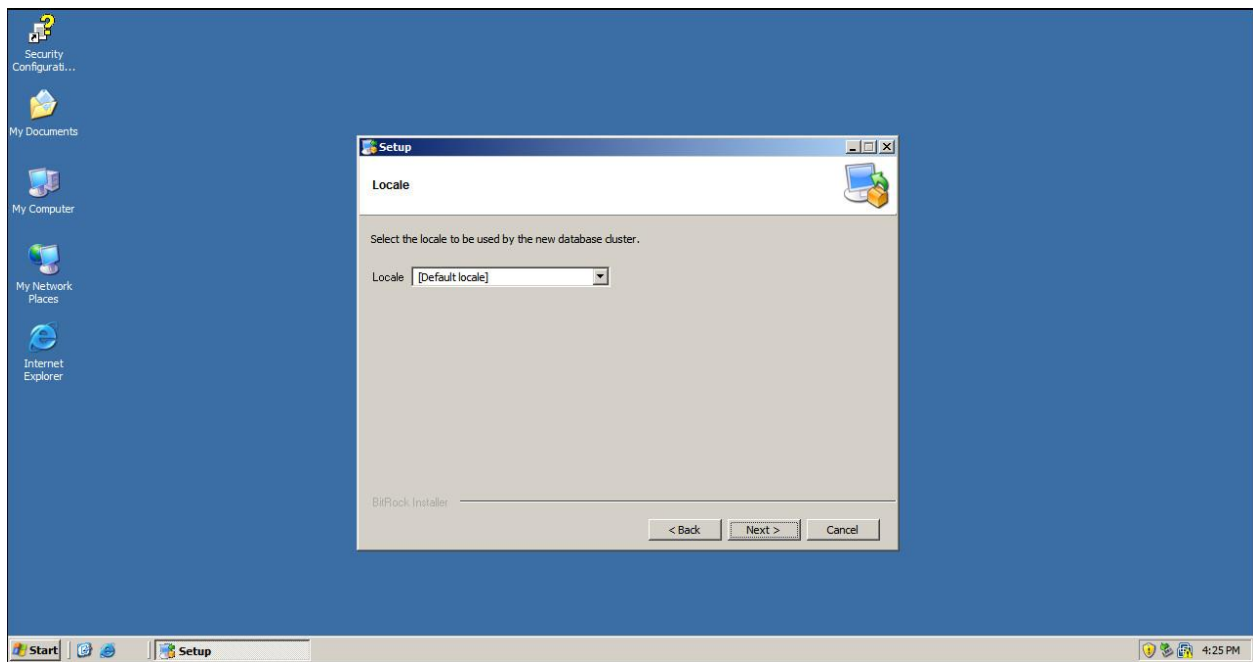
Input a password for the database superuser and service account(postgres)



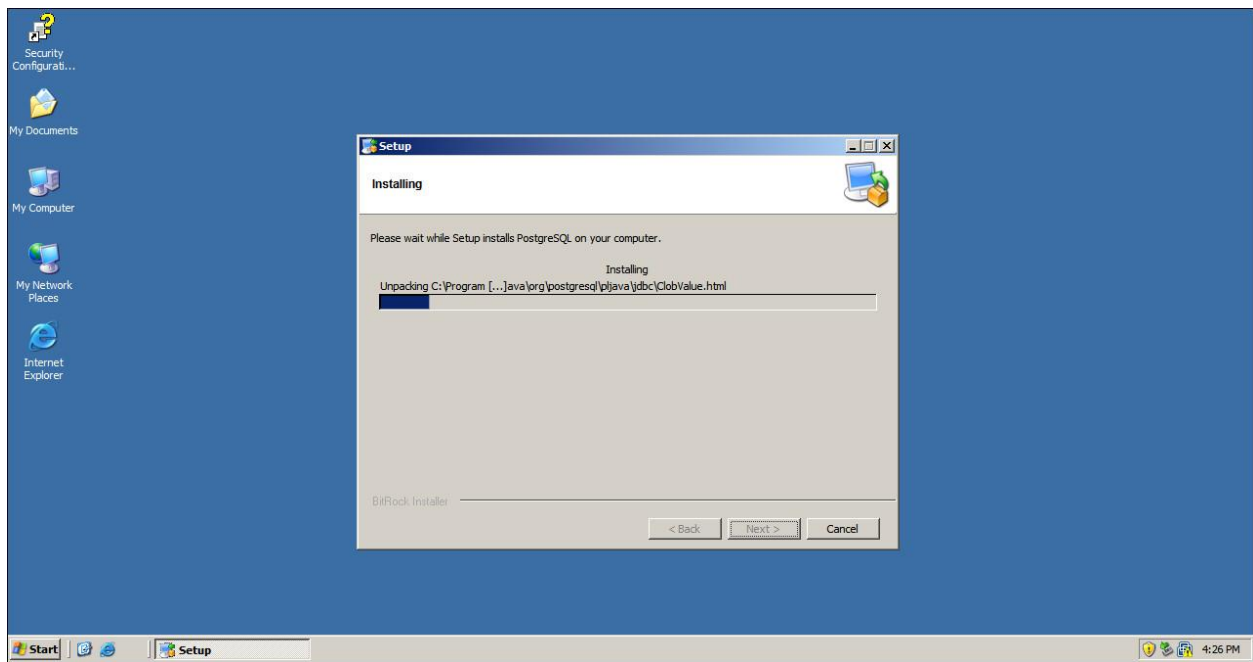
Click next



Click next



Installing

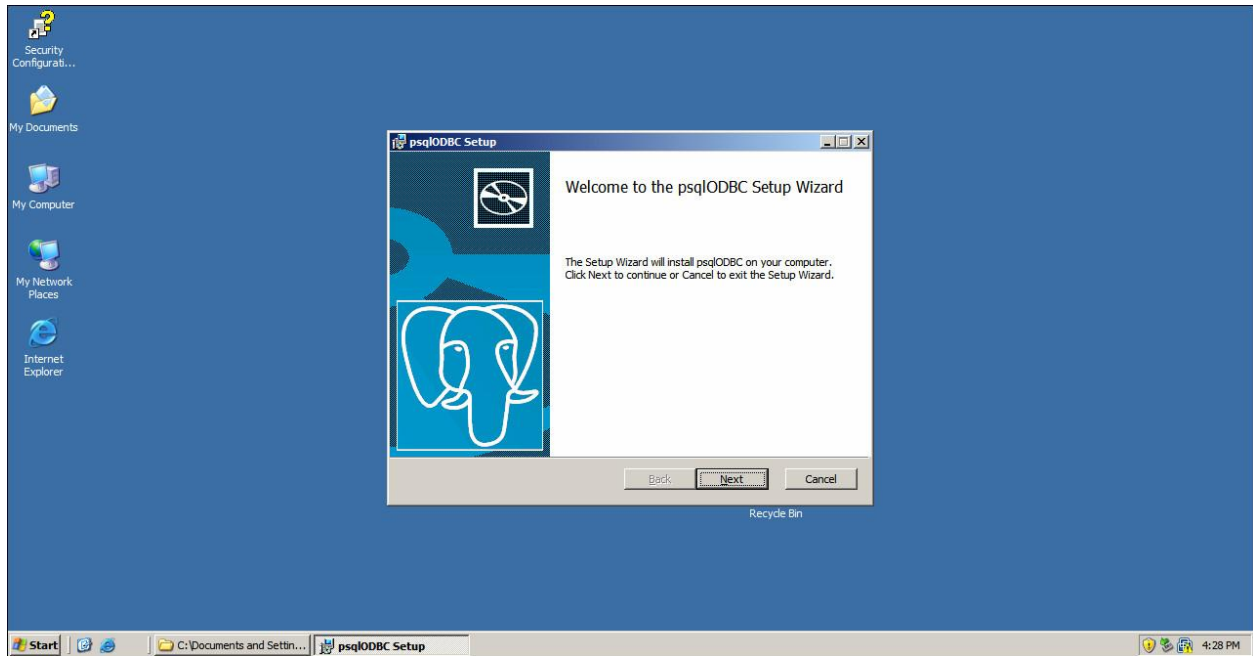


## Finishing installation

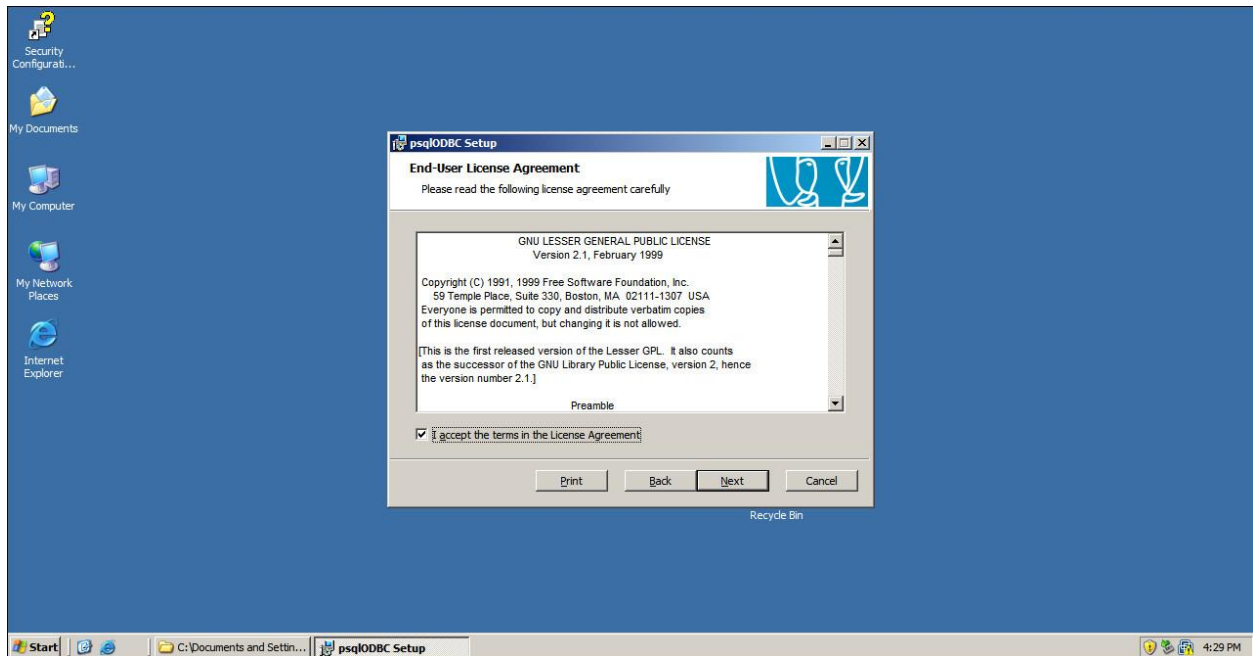


- PostgreSQL ODBC Connector Installation

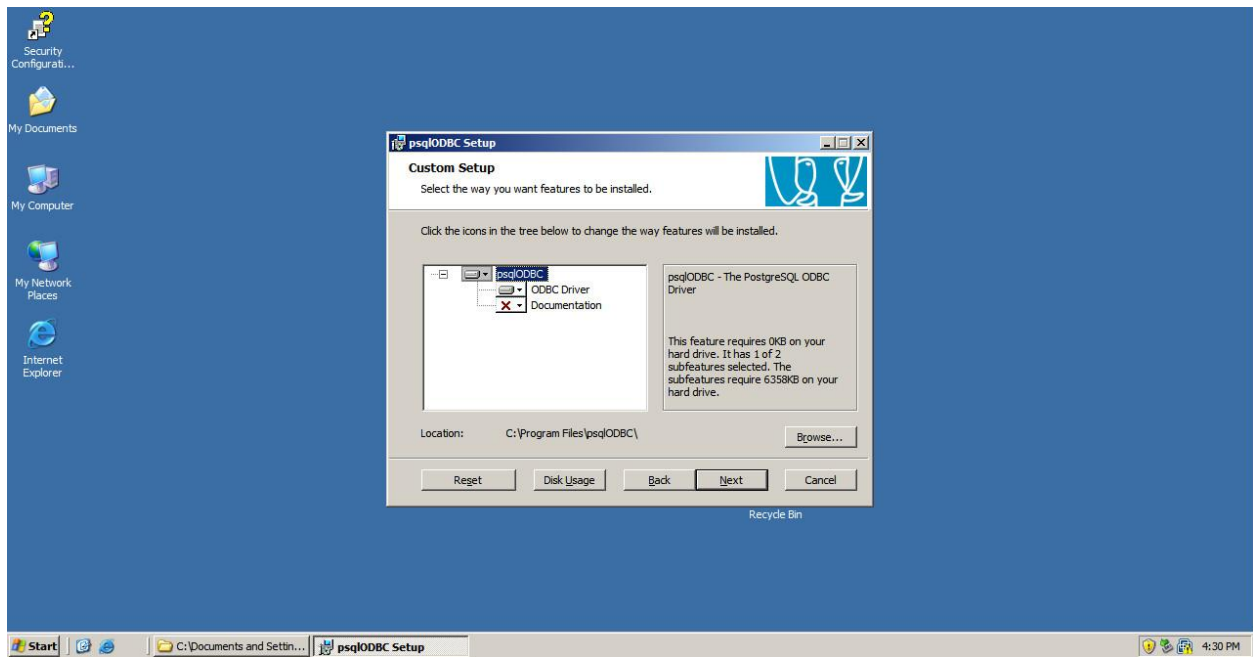
Installing PostgreSQL ODBC, click Next button



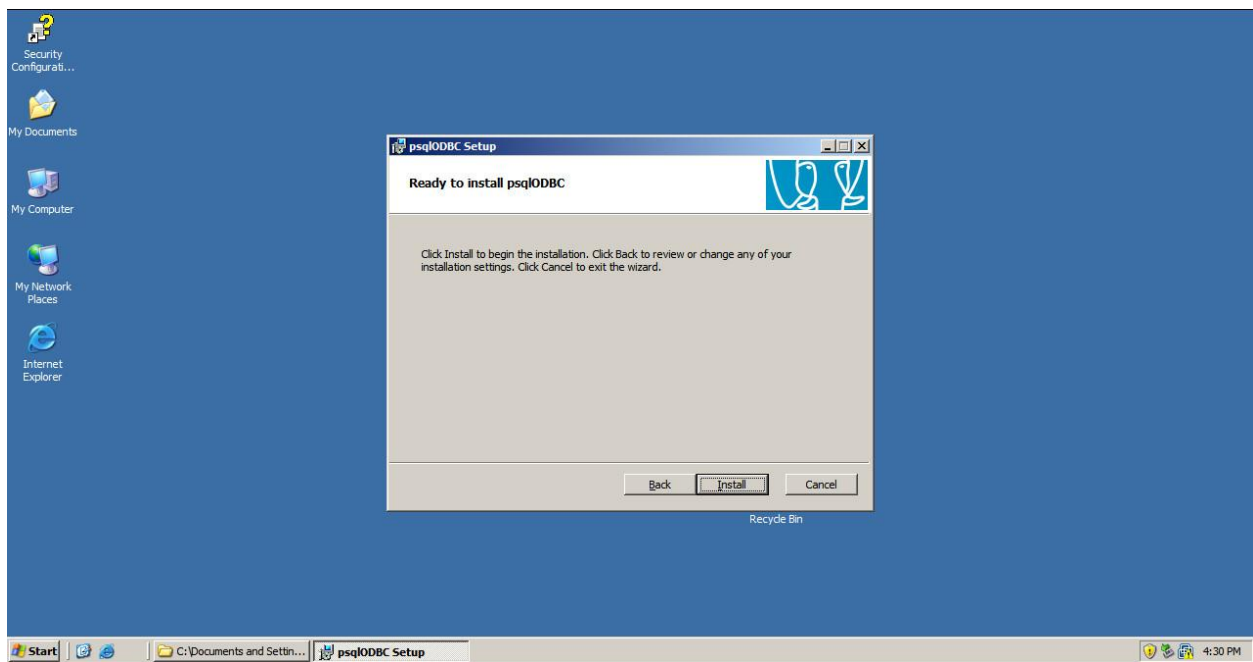
Accept the License Agreement



Keeping default, Click next button

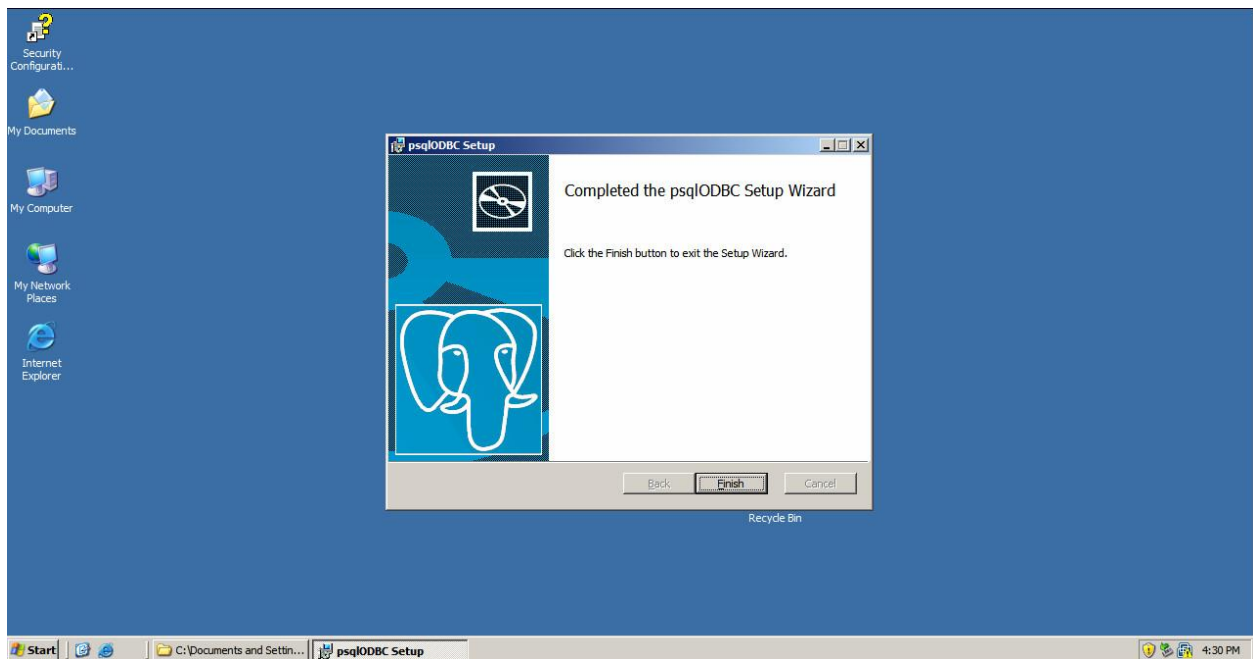


## Install

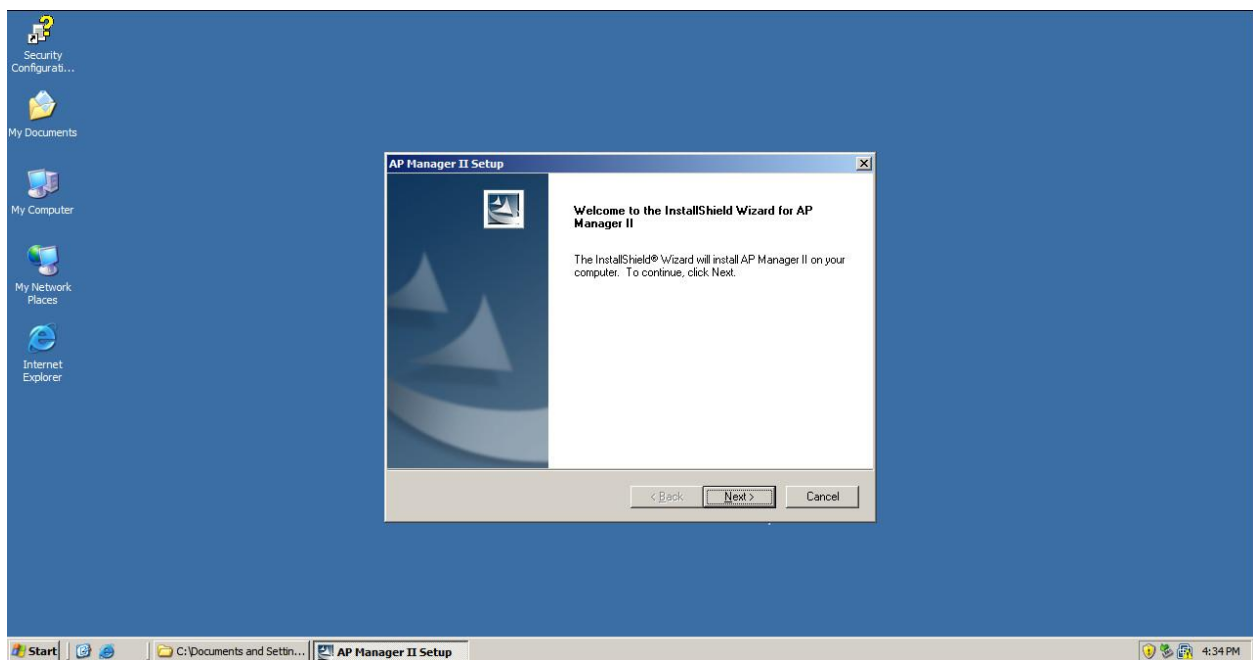


## Finishing ODBC installation

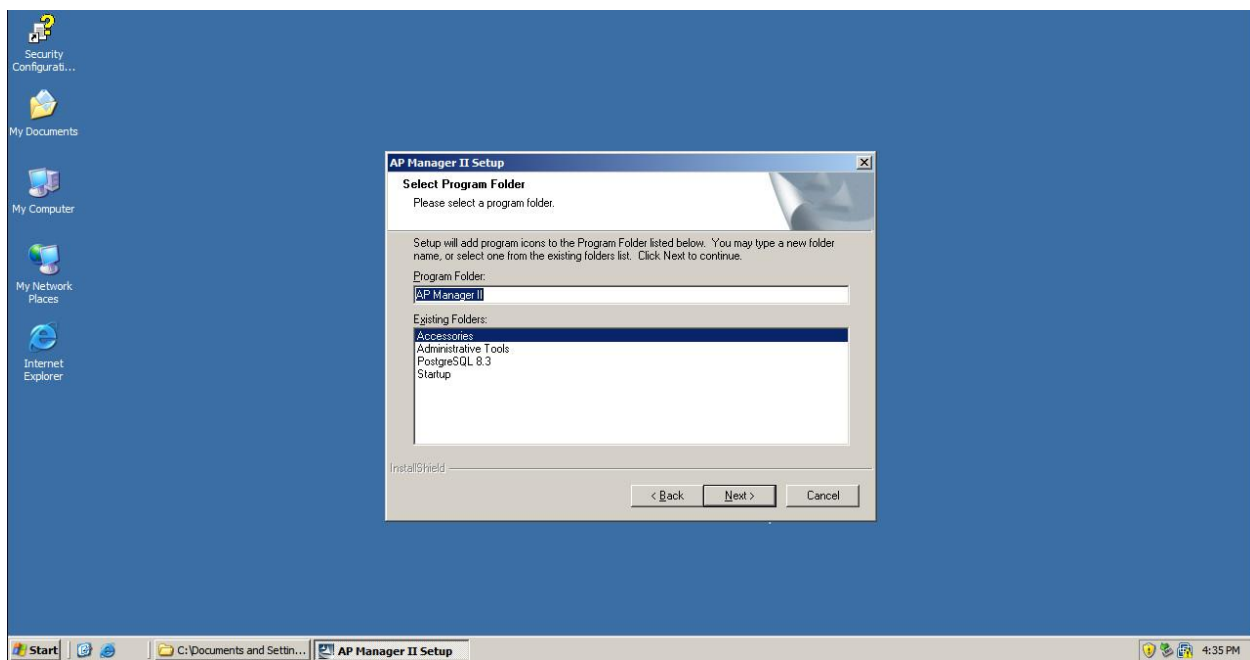
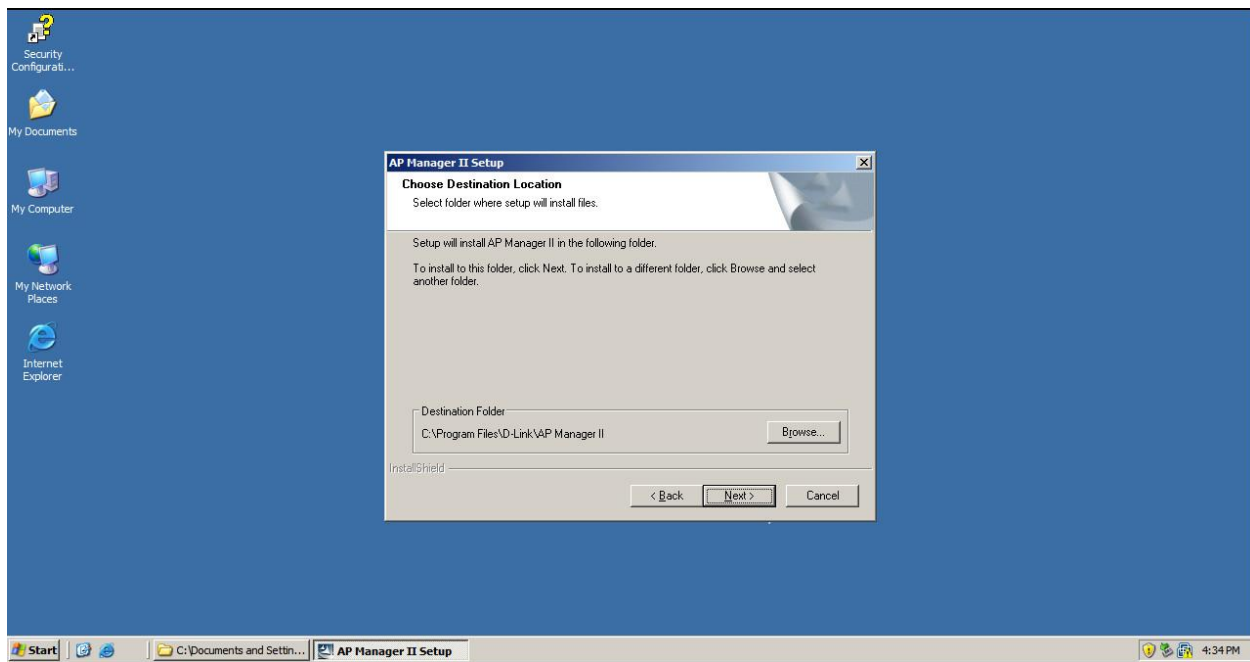




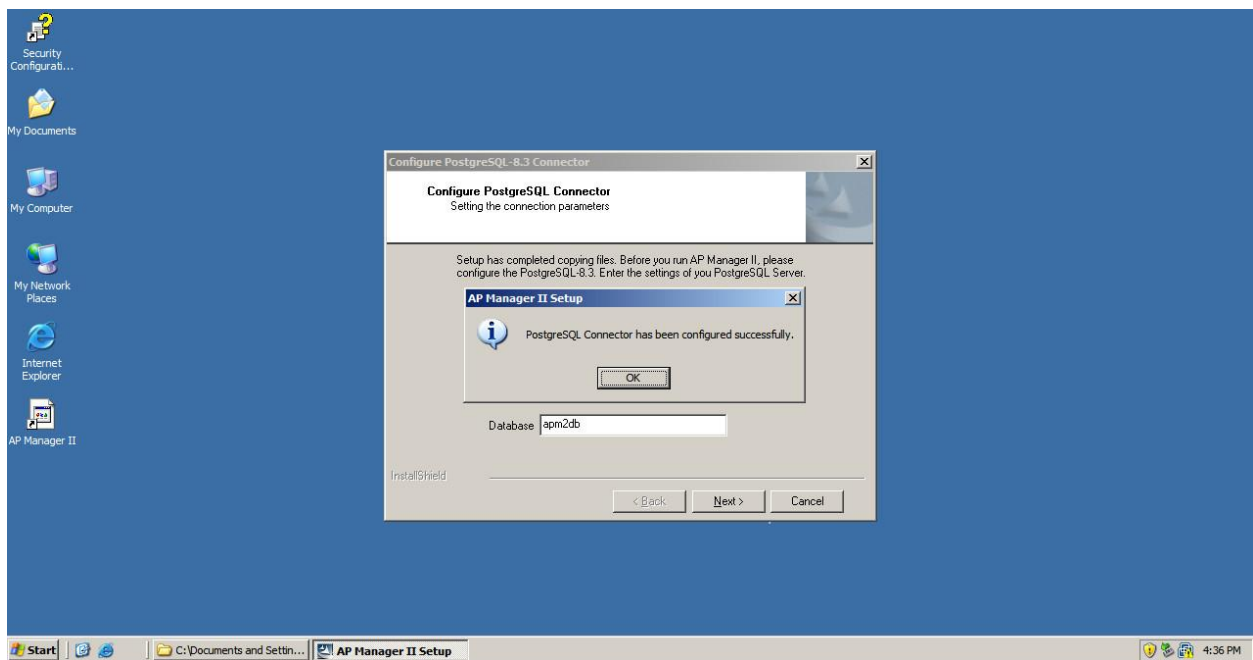
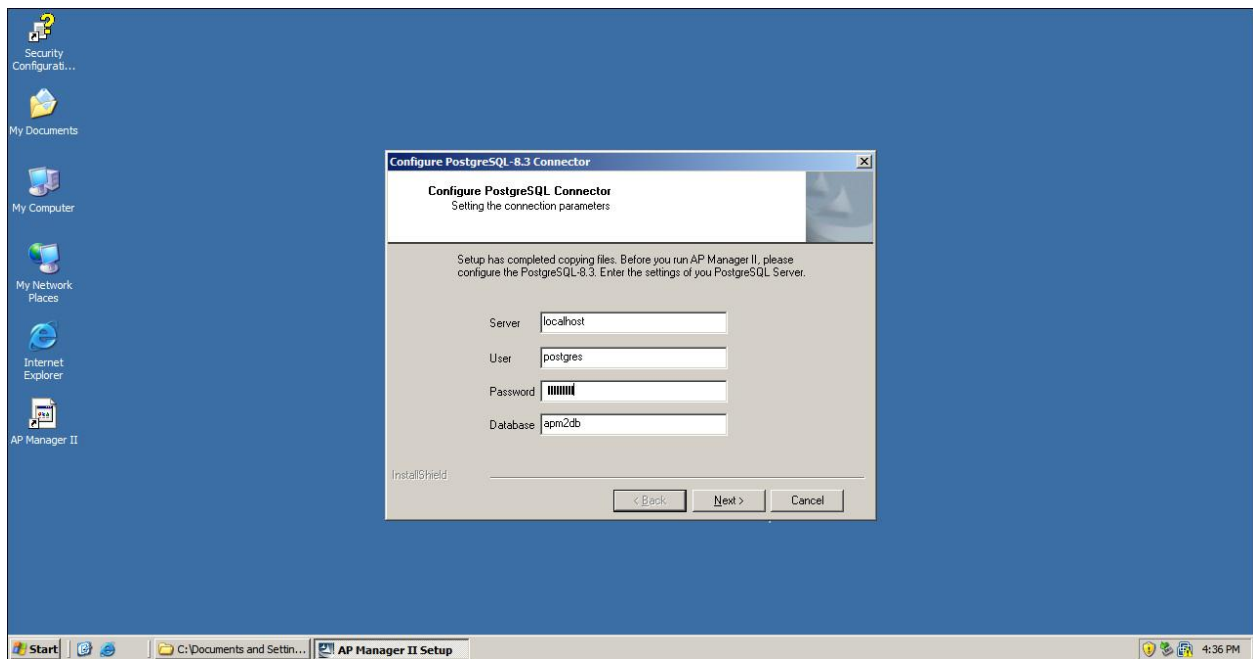
- AP Manager II Installation



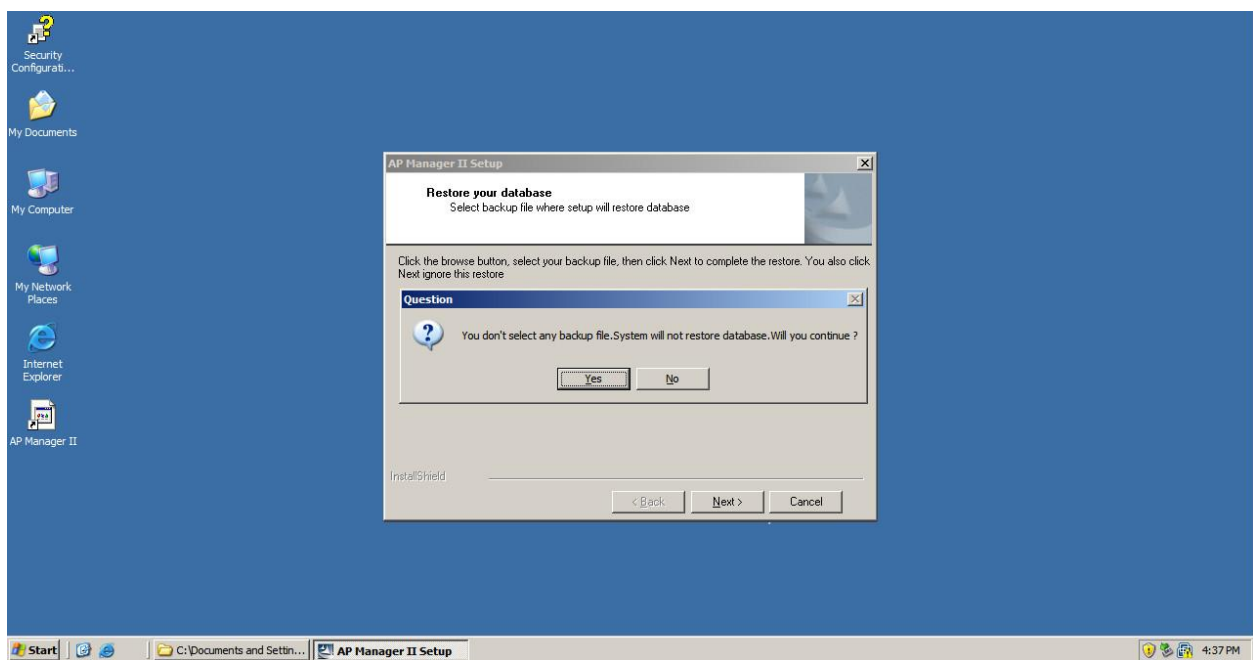
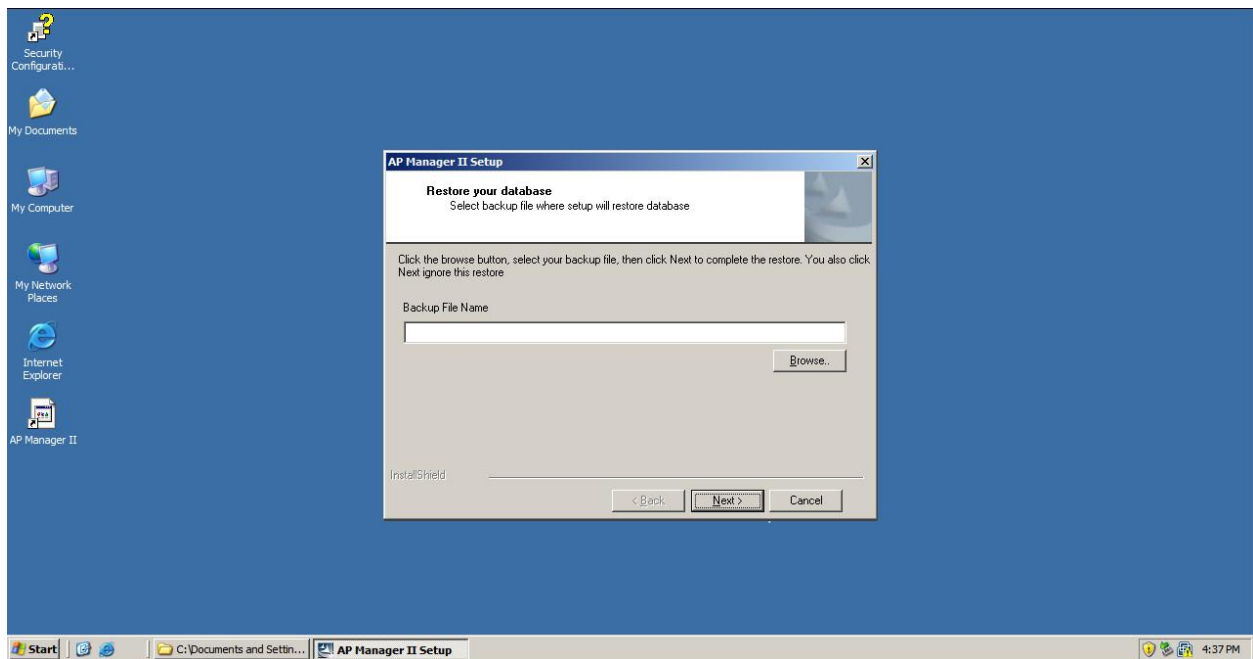
Keeping default, Click next button



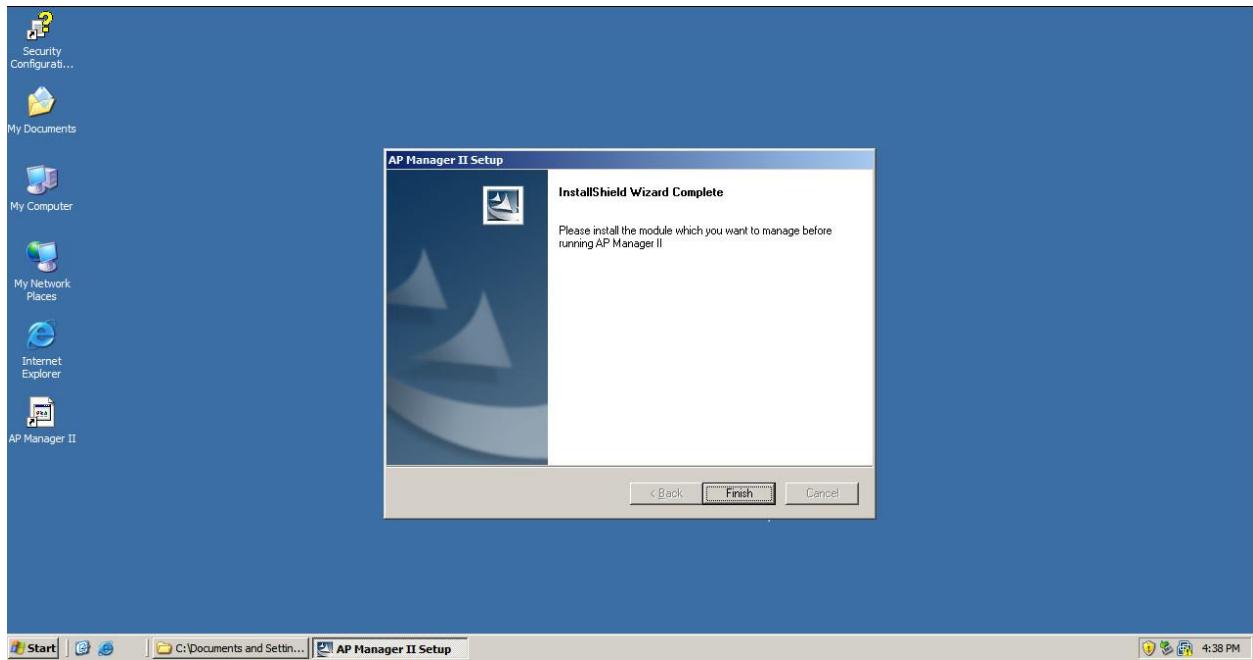
Input password of the PostgreSQL superuser



If you expect to restore the original database, than click the browse button to choice file position, if not you are able to ignore this step and continue.



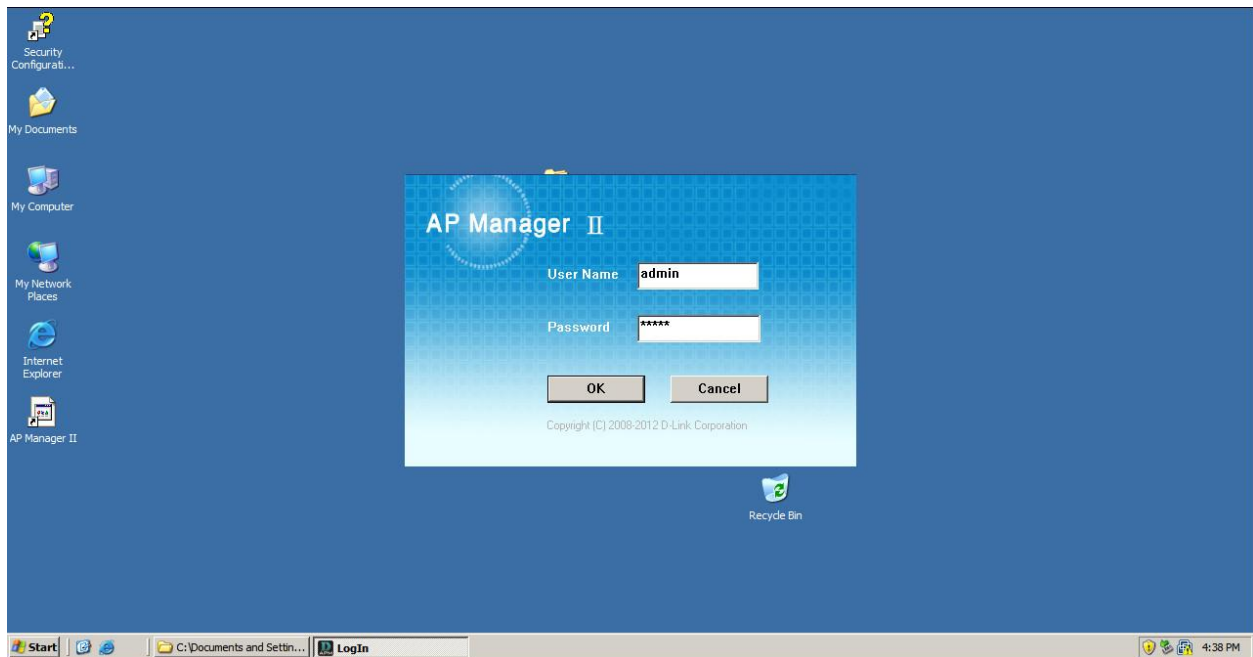
Finishing the AP Manage II installation



- **Install AP Manager Module**

After you finish the above procedure you have to install the managed AP module packages, you are able to find the file from your CD or D-Link website.

AP Manager II login page



## Configuration page

