

D-Link® Quick Installation Guide

This product works with the following operating system software: **Windows XP**,
Windows 2000



DWL-AG660
AirPremier™ AG Dualband
Wireless Cardbus Adapter

Before You Begin

You must have at least the following:

- A laptop/notebook computer with an available 32-bit cardbus slot
- At least a 500MHz processor and 128MB of memory
- Cardbus controller properly installed and working in the laptop computer
- An 802.11a, 802.11b or 802.11g access point (for Infrastructure Mode) or another 802.11a, 802.11b, or 802.11g wireless adapter (for Ad-Hoc; Peer-to-Peer networking mode.)

Check Your Package Contents

These are the items included with your DWL-AG660 purchase:



DWL-AG660 AirPremier™ AG Dualband Wireless
Cardbus Adapter



CD-ROM (containing Drivers, Manual and Warranty)

If any of the above items are missing, please contact your reseller.

1

Insert the D-Link CD Into Your Laptop PC

Turn on the computer and **Insert** the **DWL-AG660 Driver CD** in the CD-ROM drive.

The step-by-step instructions that follow are shown in **Windows XP**. The steps and screens are similar for other Windows operating systems.



Do **NOT** install the **DWL-AG660 Cardbus Adapter** into your computer before installing the driver software from the **D-Link CD!**

1


Continued...

The Install Screen will appear.

Click **Install Driver**

If the CD Autorun function does not automatically start on your computer, go to **Start > Run** and type "**D:\driver\setup.exe**." If it does start, proceed to the next screen.

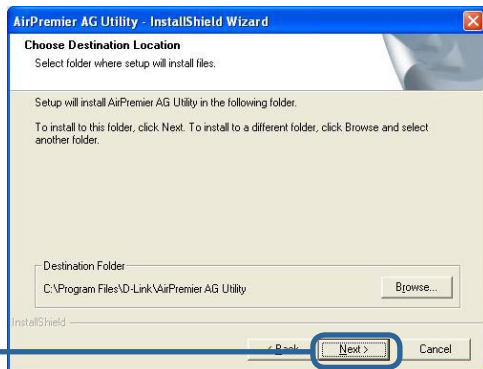
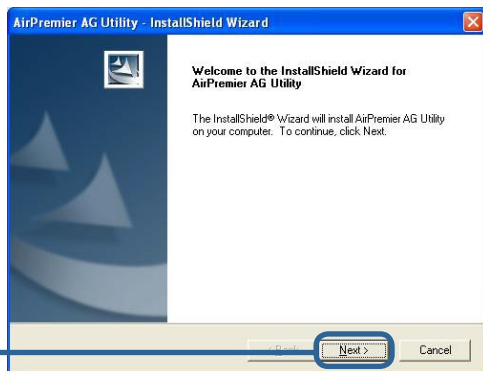
Type "**D:\driver\setup.exe**."

 The letter "**D**" represents the letter of the CD-ROM drive. Your CD-ROM drive may be a different drive letter.

Click **OK**

Click **Next**

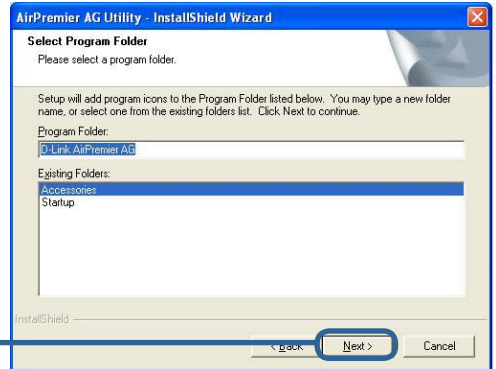
Click **Next**



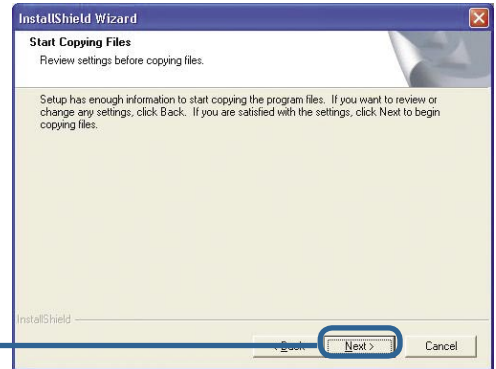
1

Continued...

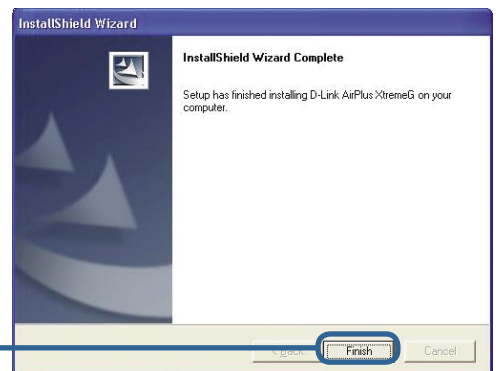
Click **Next**



Click **Next**



Click **Finish**



Shut down your computer

2

Installing the DWL-AG660 Wireless Cardbus Adapter in Your Computer

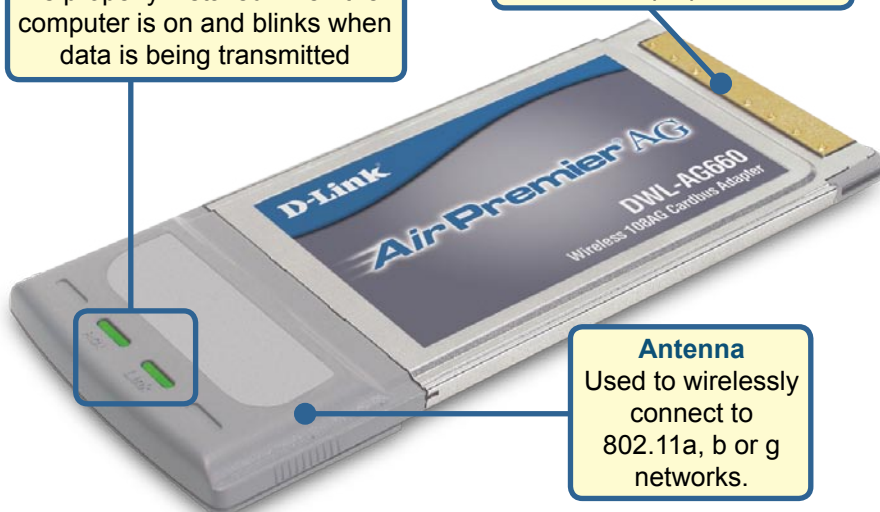
- A. Make sure to turn off the laptop computer.
- B. Locate the Cardbus slot on your laptop computer.



- C. Gently insert the DWL-AG660 into the Cardbus slot in your laptop computer (as shown.)

Link/Activity LED
Indicates that the DWL-AG660 is properly installed when the computer is on and blinks when data is being transmitted

32-bit connector
This is the connector that fits into the Cardbus slot of your laptop.



Antenna
Used to wirelessly connect to 802.11a, b or g networks.

3

Restart Your Computer

When you restart your computer this **Found New Hardware Wizard (Windows XP)** screen will appear:

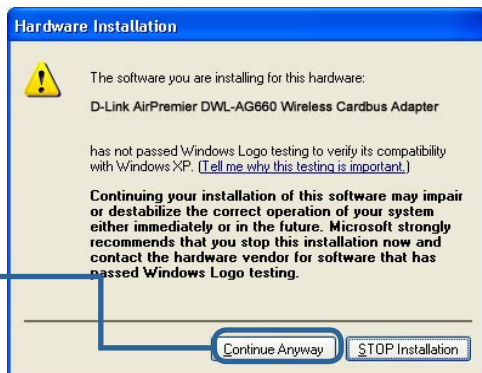
Select **Install the software automatically (Recommended)**

Click **Next**



For Windows XP: This **Hardware Installation** alert screen may appear after the desktop computer restarts.

Click **Continue Anyway** to finalize the installation



The D-Link driver software for this device is undergoing Windows Logo testing. Microsoft certification is pending.

Click **Finish** to finalize the installation.



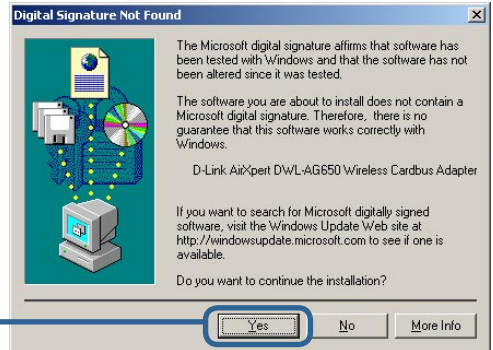
3

Continued...



For Windows 2000, this Digital Signature Not Found screen may appear after your computer restarts.

Click **Yes** to finalize the installation.



The D-Link driver software for this device is undergoing Windows Logo testing. Microsoft certification is pending.

4

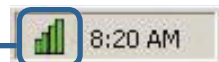
Your Installation is Complete!

After you have finished the installation in Windows XP, 2000, Me, or 98SE, the D-Link *AirPremier™* DWL-AG660 **Configuration Utility** will automatically start and the utility icon will appear in the bottom right hand corner of the desktop screen (systray). **If this icon appears **GREEN**, then you have successfully installed the DWL-AG660, are connected to a wireless network and are ready to communicate!**

If the utility icon does not appear, double-click the **shortcut icon that has appeared on your desktop.**



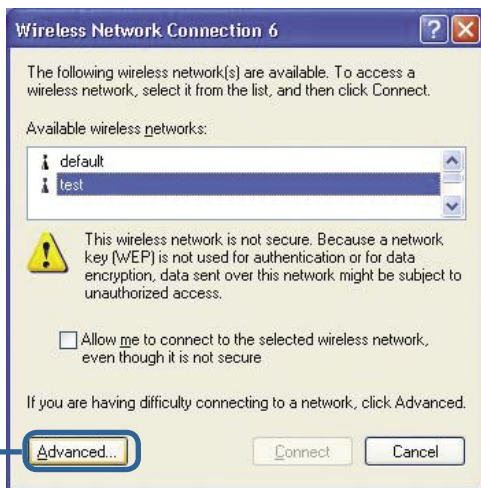
Double-click the **utility icon to use the configuration utility.**



Appendix

For Windows XP, if you wish to use the *AirPremier™* utility, please do the following steps.

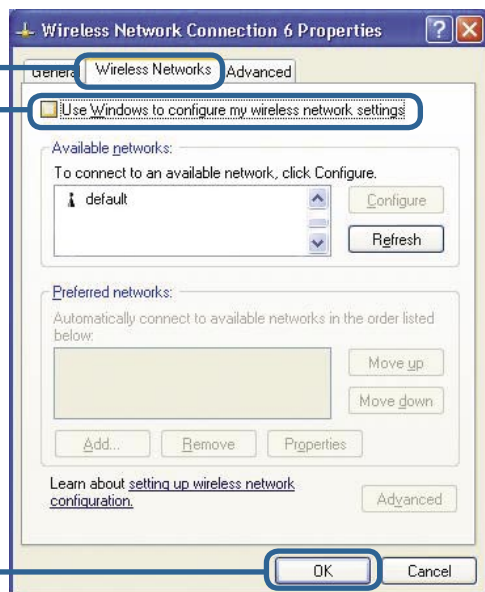
Click the **XP Networking icon** to use the Zero Configuration Wireless Settings.



Click **Advanced**

Click **Wireless Networks**

Uncheck **“Use Windows to configure my wireless network settings.”**



Click **OK**

Appendix (Continued)

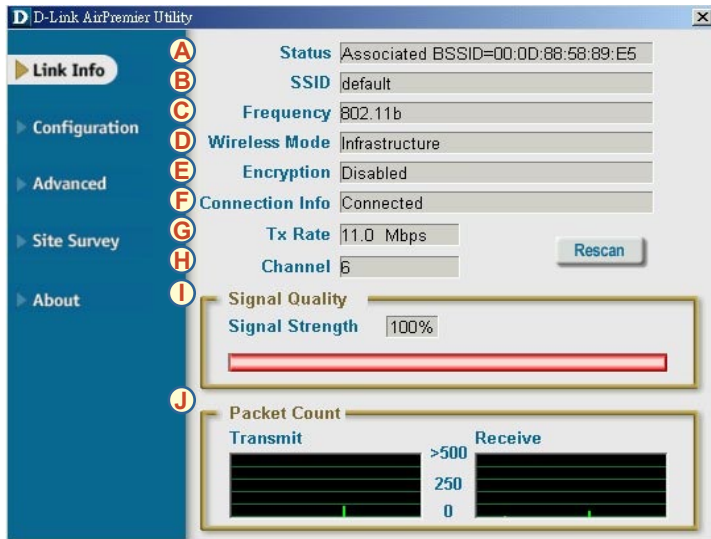
Using the Configuration Utility

A. Status: Displays the MAC address of the access point that is associated with the DWL-AG660.

B. SSID: The Service Set Identifier is the name assigned to the wireless network. The factory SSID setting is set to **default**.

C. Frequency: Displays the current frequency used by the current connection to the access point.

D. Wireless Mode: The factory setting is set to **Infrastructure**. Ad-Hoc mode is used for Peer-to-Peer networking.



E. Encryption: Displays the current encryption status of the wireless connection.

F. Connection Info: Displays connected or authenticated information.

G. Tx Rate: The default setting is **Auto**; meaning, Tx Rate settings are automatically determined by the DWL-AG660 depending on the distance from the access point.

H. Channel: Displays the channel information. By default, the channel is set to 6 and selection is automatically determined by the wireless access point or router.

I. Link Quality / Signal Strength: Displays the Link Quality for the DWL-AG660 wireless connection to the access point. The Signal Strength represents the wireless signal between the access point and the DWL-AG660. The percentage coincides with the graphical bar.

J. Packet Count: Graphically displays the statistics of data transmitted and received.

k. SSID: The Service Set Identifier is the name assigned to the wireless network. The factory SSID setting is set to **default**. Make changes here to match the SSID on existing wireless router or access point.

L. Wireless Mode: The factory setting is set to **Infrastructure**. Ad-Hoc mode is used for Peer-to-Peer networking.

M. Authentication: You can specify the authentication mode for the wireless network. The default setting is set to Open Authentication.

D-Link AirPremier Utility

▶ Link Info

▶ **Configuration**

▶ Advanced

▶ Site Survey

▶ About

K SSID: Default

L Wireless Mode: Infrastructure

M Authentication: Open

N Data Encryption: Enabled

O Key Length:

P IEEE802.1X: Disabled

1

2

3

4

Authentication Config

IP Settings

N. Data Encryption: The default setting is set to Disable. The adapter supports WEP and AES when encryption is enabled.

O. Key Length: When encryption is enabled, you will have the option to specify the level and key format of the encryption used. Select the appropriate Key Index: 1-4 and enter ACSII or hexadecimal digits in the appropriate field.

P. IEEE 802.1X: When encryption is enabled, you will have the option to specify if you wish to use 802.1x authentication.

IP Address Configuration

To connect to a network, **make sure the proper network settings are configured for DWL-AG660.**

For Microsoft Windows XP:

Go to **Start > Right-click on**

My Network Places >

select **Properties > Right-click and select Properties** on the **Network Connection** associated with the DWL-AG660.

Click **Internet Protocol (TCP/IP)**

Click **Properties**

Dynamic IP address setup

Used when a **DHCP server** is available on the local network. (i.e. Router)

Select **Obtain an IP address automatically** (if the wireless router or access point has DHCP server enabled)

Select **Obtain DNS server address automatically**

Click **OK**

Static IP address setup

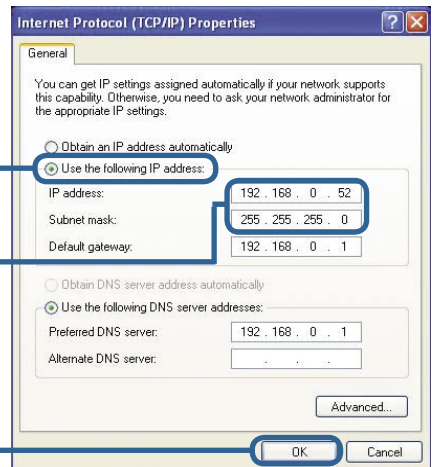
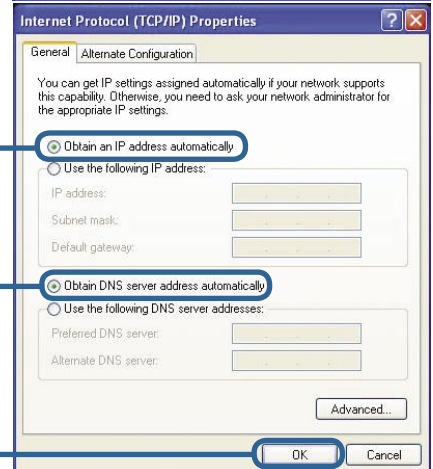
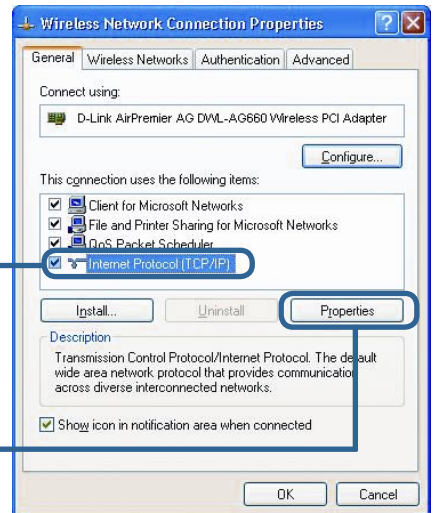
Used when a **DHCP server** is not available on the local network.

Select **Use the following IP address**

IP address: 192.168.0.52
Subnet mask: 255.255.255.0

Input a static IP address in the same range as the wireless router or access point.

Click **OK**

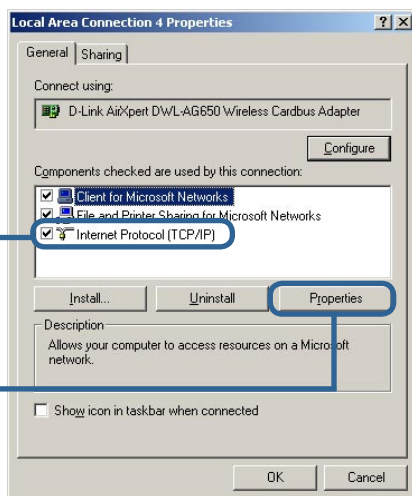


For Windows 2000 users:

Go to **Start > Settings > Network and Dial-up Connections > Right Click and select Properties** on the **Local Area Connection** associated with the DWL-AG660

Click **Internet Protocol (TCP/IP)**

Click **Properties**



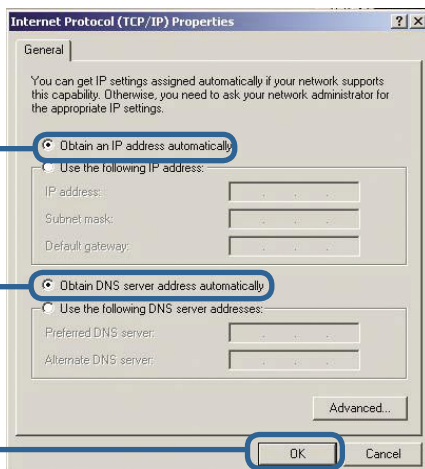
Dynamic IP address setup

Used when a **DHCP server** is available on the local network. (i.e. Router)

Select **Obtain an IP address automatically** (if the wireless router or access point has DHCP server enabled)

Select **Obtain DNS server address automatically**

Click **OK**



Static IP address setup

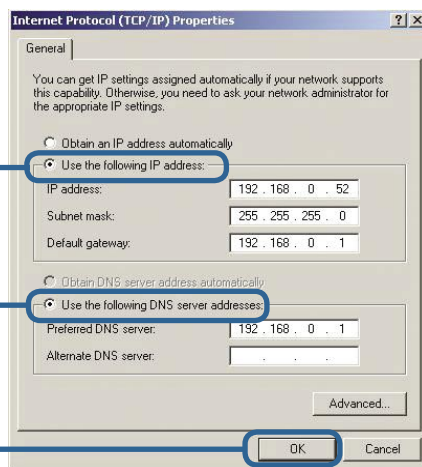
Used when a **DHCP server** is not available on the local network.

Select **Use the following IP address**

IP address: 192.168.0.52
Subnet mask: 255.255.255.0

Input a static IP address in the same range as the wireless router or access point.

Click **OK**



Technical Support

You can find software updates and user documentation on the D-Link websites.

D-Link provides free technical support for customers within Canada, the United Kingdom, and Ireland.

Customers can contact D-Link technical support through our websites, or by phone.

For Customers within The United Kingdom & Ireland:

D-Link UK & Ireland Technical Support over the Telephone:

08456 12 0003 (United Kingdom)

+44 8456 12 0003 (Ireland)

Monday to Friday 8:00 am to 10:00 pm GMT

Sat & Sun 10.00 am to 7.00 pm GMT

D-Link UK & Ireland Technical Support over the Internet:

<http://www.dlink.co.uk>

<ftp://ftp.dlink.co.uk>

For Customers within Canada:

D-Link Canada Technical Support over the Telephone:

1-800-361-5265 (Canada)

Monday to Friday 7:30 am to 12:00 am EST

D-Link Canada Technical Support over the Internet:

<http://support.dlink.ca>

email: support@dlink.ca

