

# **D-Link *AirPremier*™ AG DWL-AG660**

11a/11g Dualband (2.4GHz/5GHz)  
Wireless 108Mbps Cardbus Adapter

## **Manual**

**D-Link**

Building Networks for People

# Contents

Package Contents .....	3
Introduction .....	4
Features .....	5
Wireless Basics .....	6
Getting Started .....	10
Using the Configuration Utility .....	13
Networking Basics .....	22
Troubleshooting .....	35
Technical Specifications .....	40
Warranty and Registration .....	42
Appendix .....	45

*EAP Types*

*Definitions of Configuration Terms*

# Package Contents



## Contents of Package:

- **D-Link AirPremier™ AG DWL-AG660**  
11a/11g Dualband (2.4GHz/5GHz)  
Wireless 108Mbps Cardbus Adapter
- Manual, Warranty and Drivers on CD
- Printed Quick Installation Guide

*If any of the above items are missing, please contact your reseller.*

## System Requirements for Configuration:

- A laptop computer with an available 32-bit Cardbus slot
- Windows XP/2000
- At least 128MB of memory and a 500MHz processor
- An 802.11a, 802.11b or 802.11g access point (for Infrastructure mode) or another 802.11a, 802.11b, or 802.11g wireless adapter (for Ad-Hoc; Peer-to-Peer networking mode).

*\*Due to DFS(Dynamic Frequency Selection), 802.11a SSID broadcast(adhoc mode) is always disabled.*

# Introduction

At up to fifteen times the speed of previous wireless devices (up to 108Mbps in Super AG mode), you can work faster and more efficiently, increasing productivity. With the DWL-AG660, bandwidth-intensive applications like graphics or multimedia will benefit significantly because large files are able to move across the network quickly.

Inclusion of all three standards (802.11g; 802.11a; 802.11b) means that the DWL-AG660 is versatile enough to allow connection to almost any 802.11 network or device.

The DWL-AG660 has the newest, strongest and most advanced security features available today. When used with other 802.11 WPA (Wi-Fi Protected Access)/WPA2(Wi-Fi Protected Access 2™) and 802.1X compatible products in a network with a RADIUS server, the security features include:

**WPA/WPA2: Wi-Fi Protected Access/Wi-Fi Protected Access 2™** which authorizes and identifies users based on a secret key that changes automatically at regular intervals. **WPA/WPA2** uses **TKIP (Temporal Key Integrity Protocol)** to change the temporal key every 10,000 packets (a packet is a kind of message transmitted over a network.) This ensures much greater security than the standard WEP security. (By contrast, the previous WEP encryption implementations required the keys to be changed manually.)

**802.1X: Authentication** which is a first line of defense against intrusion. In the authentication process, the Authentication Server\* verifies the identity of the client attempting to connect to the network. Unfamiliar clients would be denied access.

For home users that will not incorporate a RADIUS server in their network, the security for the DWL-AG660, used in conjunction with other WPA/WPA2-compatible 802.11 products, will still be much stronger than ever before. Utilizing the **Pre- Shared Key mode** of WPA/WPA2, the DWL-AG660 will obtain a new security key every time it connects to the 802.11 network. You only need to input your encryption information once in the configuration menu. No longer will you have to manually input a new WEP key frequently to ensure security. With the DWL-AG660, you will automatically receive a new key every time you connect, vastly increasing the safety of your communication.

*\*Not all servers can provide Authentication*

# Features

- **Faster Wireless Networking with speeds up to 108Mbps in Turbo mode** - Faster data transfers mean increased productivity. With the DWL-AG660 in your computer, you will have the flexibility of wireless networking speeds that save you time and money.
  - \* IEEE 802.11a standard to provide wireless 54Mbps data rate, and up to 108Mbps (only for USA and Singapore) if enable Super A/G mode with D-Link *AirPremier™AG* and *AirPlus XtremeG™* products.
  - \* IEEE 802.11g standard to provide wireless 54Mbps data rate, and up to 108Mbps if enable Super A/G mode with with D-Link *AirPremier™AG* and *AirPlus XtremeG™* products.
  - \* D-Link 108AG performance results are based on testing with other D-Link 108AG enabled devices utilizing Packet Bursting, FastFrames, Turbo Mode and Compression techniques. Data already compressed may not benefit from the D-Link 108AG compression technique.
- **Compatible with 802.11a, 802.11b and 802.11g Devices** - Fully compatible with the IEEE 802.11a, 802.11b and 802.11g standards, the DWL-AG660 can connect with existing 802.11b, 802.11g- or 802.11a- compliant routers, access points and cards. That means you can still communicate with colleagues and friends while you have the ability to link to even more wireless networks.
- **Better Security with 802.1X and WPA/WPA2** -With the DWL-AG660 in your laptop computer you can securely connect to a wireless network using 802.1x for wireless authentication, as well as WPA (Wi-Fi Protected Access)/WPA2(Wi-Fi Protected Access 2™) providing you a much higher level of security for your data and communication than has previously been available.
- **Versatility** - The DWL-AG660 is fully compatible with IEEE 802.11a and 802.11b standards, making it interoperable with 802.11a and 802.11b wireless routers and access points in your office, home or at public wireless hotspots.
- **32-bit Cardbus Performance/Plug & Play Connectivity** -The DWL-AG660 is a powerful 32-bit Cardbus adapter that installs quickly and easily into laptop computers, and when used with other D-Link *Air Premier™AG* products will automatically connect to the network out of the box.
- **Wi-Fi CERTIFIED™ for WMM™ (Wi-Fi Multimedia)** – The DWL-AG660 delivers quality of service (QoS) for voice, audio, and video use over wireless networks. It will prioritizing packets with voice, audio, and video data and make sure these packets are delivered ahead of less important traffic. This is a built in feature under Window 2000 and XP.

## LEDs

**LED** stands for **L**ight-**E**mitting **D**iode. The **DWL-AG660** has the following LEDs:

**Activity**

A blinking light indicates data is being transmitted

**Link**

A steady light indicates a connection to an access point



## Wireless Basics

D-Link wireless products are based on industry standards to provide easy-to-use and compatible high-speed wireless connectivity within your home, business or public access wireless networks. D-Link wireless products will allow you access to the data you want, when and where you want it. You will be able to enjoy the freedom that wireless networking brings.

A wireless local area network (WLAN) is a computer network that transmits and receives data with radio signals instead of wires. WLANs are used increasingly in both home and office environments, and public areas such as airports, coffee shops and universities. Innovative ways to utilize WLAN technology are helping people to work and communicate more efficiently. Increased mobility and the absence of cabling and other fixed infrastructure have proven to be beneficial for many users.

Wireless users can use the same applications they use on a wired network. Wireless adapter cards used on laptop and desktop systems support the same protocols as Ethernet adapter cards.

## Wireless Basics (*continued*)

*People use WLAN technology for many different purposes:*

**Mobility** – Productivity increases when people have access to data in any location within the operating range of the WLAN. Management decisions based on real-time information can significantly improve worker efficiency.

**Low Implementation Costs** – WLANs are easy to set up, manage, change and relocate. Networks that frequently change can benefit from WLANs ease of implementation. WLANs can operate in locations where installation of wiring may be impractical.

**Installation and Network Expansion** - Installing a WLAN system can be fast and easy and can eliminate the need to pull cable through walls and ceilings. Wireless technology allows the network to go where wires cannot go - even outside the home or office.

**Inexpensive Solution** – Wireless network devices are as competitively priced as conventional Ethernet network devices.

**Scalability** – WLANs can be configured in a variety of ways to meet the needs of specific applications and installations. Configurations are easily changed and range from Peer-to-Peer networks suitable for a small number of users to larger Infrastructure networks to accommodate hundreds or thousands of users, depending on the number of wireless devices deployed.

*The DWL-AG660 is compatible with the following wireless products:*

- **D-Link AirPremier™ AG DWL-AG530**  
Wireless PCI Adapters used with desktop computers
- **D-Link AirPremier™ AG DWL-7100AP**  
Wireless Access Points
- **D-Link AirPremier™ AG DI-784**  
Wireless Broadband Routers
- The DWL-AG660 is also interoperable with other 802.11a, 802.11g and 802.11b standards-compliant devices.

## Wireless Basics (*continued*)

### Standards-Based Technology

The DWL-AG660 Wireless Cardbus Adapter utilizes the **802.11a**, **802.11b** and **802.11g** standard.

The IEEE **802.11g** standard is an extension of the **802.11b** standard. It increases the data rate up to 54 Mbps within the 2.4GHz band utilizing **OFDM** technology.

This means that in most environments, within the specified range of this device, you will be able to transfer large files quickly or even watch a movie in MPEG format over your network without noticeable delays. This technology works by transmitting high-speed digital data over a radio wave utilizing **OFDM** (**O**rthogonal **F**requency **D**ivision **M**ultiplexing) technology. **OFDM** works by splitting the radio signal into multiple smaller sub-signals that are then transmitted simultaneously at different frequencies to the receiver. **OFDM** reduces the amount of **crosstalk** (interference) in signal transmissions. The D-Link DWL-AG660 will automatically sense the best possible connection speed to ensure the greatest speed and range possible.

802.11g offers the most advanced network security features available today, including: WPA , WPA2, 802.1x, TKIP, AES and Pre-Shared Key mode.

The DWL-AG660 is backwards compatible with 802.11b devices. This means that if you have an existing 802.11b network, the devices in that network will be compatible with 802.11g devices at speeds up to 11Mbps in the 2.4GHz range.



## Wireless Basics (*continued*)

### Installation Considerations

The D-Link *AirPremier*<sup>TM</sup> AG DWL-AG660 lets you access your network, using a wireless connection, from virtually anywhere within its operating range. Keep in mind, however, that the number, thickness and location of walls, ceilings, or other objects that the wireless signals must pass through, may limit the range. Typical ranges vary depending on the types of materials and background RF (radio frequency) noise in your home or business. The key to maximizing wireless range is to follow these basic guidelines:

- 1 Keep the number of walls and ceilings between the DWL-AG660 and other network devices to a minimum - each wall or ceiling can reduce your DWL-AG660's range from 3-90 feet (1-30 meters.) Position your devices so that the number of walls or ceilings is minimized.
- 2 Be aware of the direct line between network devices. A wall that is 1.5 feet thick (.5 meters), at a 45-degree angle appears to be almost 3 feet (1 meter) thick. At a 2-degree angle it looks over 42 feet (14 meters) thick! Position devices so that the signal will travel straight through a wall or ceiling (instead of at an angle) for better reception.
- 3 Building materials can impede the wireless signal - a solid metal door or aluminum studs may have a negative effect on range. Try to position wireless devices and computers with wireless adapters so that the signal passes through drywall or open doorways and not other materials.
- 4 Keep your product away (at least 3-6 feet or 1-2 meters) from electrical devices or appliances that generate RF noise.

# Getting Started

There are basically two modes of networking:

- **Infrastructure** – using an access point or wireless router such as the DWL-7100AP.
- **Ad-Hoc\***– directly connecting to another computer, for Peer-to-Peer communication, using wireless network adapters on each computer, such as two or more DWL-AG660 Wireless Cardbus Adapters.

On the following pages we will show you an example of an **Infrastructure Network** and an **Ad-Hoc Network**.

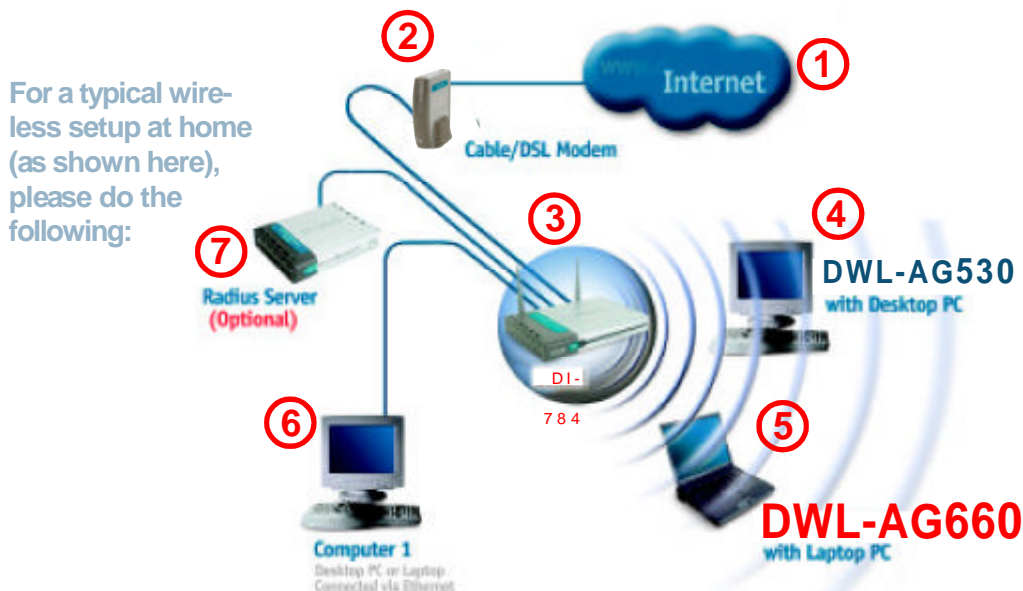
An **Infrastructure** network contains an access point or a wireless router. The **Infrastructure Network** example shown on the following page contains the following D-Link network devices (your existing network may be comprised of other devices):

- A wireless router - **D-Link AirPremier™ AG DI-784**
- A laptop computer with a wireless adapter - **D-Link Air Premier™ AG DWL-AG660**
- A desktop computer with a wireless adapter - **D-Link Air Premier™ AG DWL-AG530**
- A ADSL modem - **D-Link DSL-300T**

*\*Due to DFS(Dynamic Frequency Selection), 5GHz Ad-Hoc mode is always disable in EEC countries.*

## Getting Started (continued)

### Setting up a Wireless Infrastructure Network



- 1** You will need broadband Internet access (a Cable or DSL-subscriber line into your home or office).
- 2** Consult with your Cable or DSL provider for proper installation of the modem.
- 3** Connect the Cable or DSL modem to your broadband router. (See *the Quick Installation Guide included with your router*).
- 4** Install the D-Link AirPremier™ AG DWL-AG530 Wireless PCI Adapter into an available PCI slot on your desktop computer. (See *the Quick Installation Guide included with the network adapter*).
- 5** Install the D-Link DWL-AG660 Wireless Cardbus Adapter into a laptop computer. (See *the Quick Installation Guide included with the DWL-AG660*).
- 6** If you wish, you may connect a computer that is equipped with an Ethernet network adapter (such as a DFE-528TX) to the router also.
- 7** A RADIUS server is optional. Connect a RADIUS server to your network to use all the features of WPA. (Without a RADIUS server you can still use the *WPA Pre-Shared Key* mode.) RADIUS Authentication can also be provided by another service provider over the Internet and remote to your network site.

## Getting Started (continued)

### Setting up a Wireless Ad-Hoc Network



- 1** Install the **D-Link DWL-AG530** Wireless PCI Adapter into the desktop computer. (See the *Quick Installation Guide* included with the DWL-AG530).
- 2** Install the **DWL-AG660** into a laptop computer. (See the *Quick Installation Guide* included with the DWL-AG660).
- 3** Set the wireless configuration for the adapters to Ad-Hoc mode, set the adapters to the same channel, and assign an IP address to each computer on the Ad-Hoc network. (See box below).

#### IP Address

When assigning IP addresses to the computers on the network, please remember that the **IP address for each computer must be in the same IP address range as all the computers in the network**, and the subnet mask must be exactly the same for all the computers in the network.

For example: If the first computer is assigned an IP address of 192.168.0.2 with a subnet mask of 255.255.255.0, then the second computer can be assigned an IP address of 192.168.0.3 with a subnet mask of 255.255.255.0, etc.

**IMPORTANT:** If computers or other devices are assigned the same IP address, one or more of the devices may not be visible on the network.

# Using the Configuration Utility

**D-Link AirPremier™ AG DWL-AG660** uses the **Configuration Utility** as the management software. The utility provides the user an easy interface to change any settings related to the wireless adapter. After you have completed the installation of the DWL-AG660 (refer to the **Quick Installation Guide** that came with your purchase) whenever you start the computer, the **Configuration Utility** starts automatically and the system tray icon is loaded in the toolbar (see illustration below\*.) Clicking on the utility icon will start the **Configuration Utility**. Another way to start the **Configuration Utility** is to click on **Start>Programs>D-Link AirPremier™ AG > D-Link AirPremier™ AG Utility**.

If you are using Windows XP, you can use either the Zero Configuration Utility or the D-Link Configuration Utility.

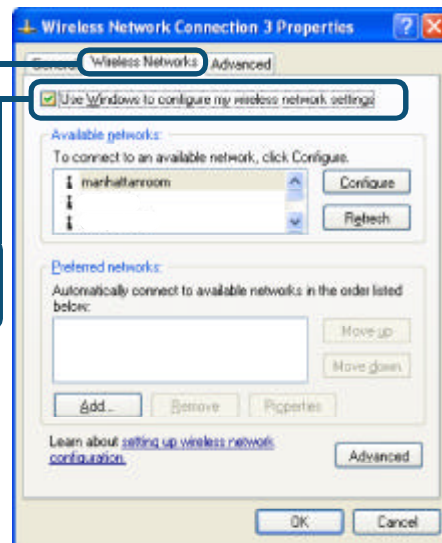
To use the D-Link Configuration Utility with XP, right-click on the wireless network icon in the taskbar in the lower right-hand corner of your computer screen.




In the window that appears, select **View Available Wireless Networks** and click the **Advanced** button. The screen at right will appear.

Select the **Wireless Networks** tab.

Uncheck the box in the properties window that enables windows configuration.



 To access the WPA/WPA2 security features of the DWL-AG660 you must install the Aegis software (included on the installation CD) before inserting the Adapter into your laptop computer.

After you have done this, you can then use the D-Link Configuration Utility with XP by clicking on the D-Link Configuration Utility icon.

If the icon does not display in the taskbar, then click on this icon on your desktop to open.



\*Configuration Utility icon in the system tray



## Using the Configuration Utility (continued)

After clicking on the Configuration Utility icon, the **Link Info** screen will display the settings for the DWL-AG660:

### Status:

Displays the MAC address of the access point or router to which the DWL-AG660 is associated.

### SSID:

The Service Set Identifier is the name assigned to the wireless network. The factory SSID setting is **default**.

### Frequency:

802.11b indicates that the DWL-AG660 is communicating in the 2.4GHz band.

### Wireless Mode:

Either **Infrastructure** or **Ad-Hoc\*** will be displayed here. (Please see the *Getting Started* section in this manual for an explanation of these two modes.)

### Encryption:

You can see if WEP (Wired Equivalent Privacy) is **Enabled** or **Disabled** here.

### Connection Info:

The connection status is displayed here.

### Tx Rate:

Tx Rate settings are automatically determined for an optimal speed up to a maximum of 54Mbps (108Mbps in Turbo mode).

### Channel:

The channel selection is automatically determined by the DWL-AG660.

### Signal Strength/Link Quality:

Displays the Link Quality for the DWL-AG660 wireless connection to the access point. The signal strength represents the wireless signal between the access point and the DWL-AG660. The percentage coincides with the graphical bar.

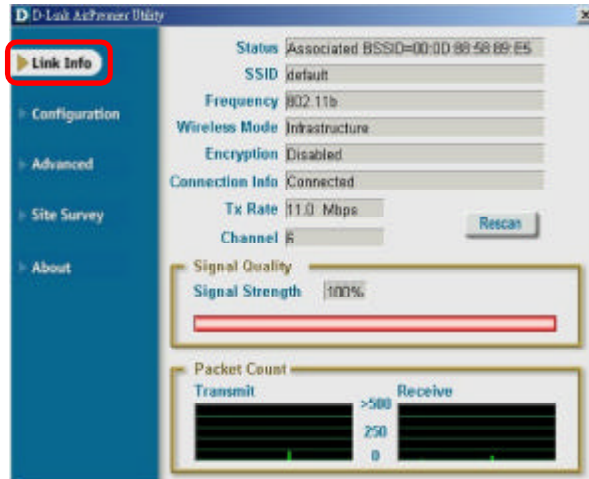
### Packet Count:

Displays the statistics of the data packets that are transmitted and received.

### Rescan Button:

Rescans for the strongest signal in your environment and associates with that access point or router.

## Link Info



*\*Due to DFS(Dynamic Frequency Selection), 5GHz Ad-Hoc mode is always disable in EEC countries.*

## Using the Configuration Utility (continued)

### SSID:

Service Set Identifier is a name that identifies a wireless network. Access points and wireless devices attempting to connect to a specific WLAN (Wireless Local Area Network) must use the same SSID. The default setting is **default**.

### Wireless Mode:

Click on the pull-down menu; select from the following options:

**Infrastructure** - Connecting to the WLAN using an access point. (This is the **default** setting).

**Ad-Hoc\*** – Wireless mode used when connecting directly to a computer equipped with a wireless adapter in a Peer-to-Peer environment.

*\*Due to DFS(Dynamic Frequency Selection), 5GHz Ad-Hoc mode is always disable in EEC countries.*

### Data Encryption:

Select **Enabled** or **Disabled**.

### Authentication:

Choose one of the following modes:

**Open Authentication** - The DWL-AG660 is visible to all devices on the network.

**Shared Authentication**- Allows communication only with other devices with identical WEP settings.

**WPA/WPA2\*** - Select to enable WPA/WPA2. Click **Authentication Config**.

**WPA-PSK/WPA2-PSK\*** - Select to enable WPA-PSK/WPA2-PSK. Click **Authentication Config**.

### Key Length:

Select the key length and either ASCII or hexadecimal format.

### IEEE802.1x:

Enable 802.1x in this field. (802.1x is automatically enabled when **WPA/WPA2** or **WPA-PSK/WPA2-PSK** is selected.)

### Keys 1-4:

Select the default key.

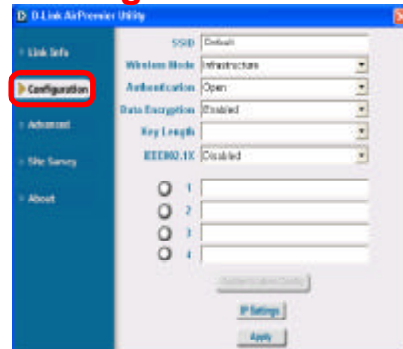
***Hexadecimal** digits consist of the numbers 0-9 and the letters A-F.*

***ASCII** (American Standard Code for Information Interchange) is a code for representing English letters as numbers from 0-127.*

### IP Settings:

When you click **IP Settings** in the Configuration window, the pop-up screen shown on the next page will appear. Configure the IP settings in that window. Click **Apply** to save changes.

## Configuration





## Using the Configuration Utility (*continued*)

### Configuration > IP Settings

IP Settings

☒ Obtain an IP Address Automatically

☐ Assign the following IP Address

IP Address

Subnet Mask

Default Gateway

☒ Obtain DNS Server Address Automatically

☐ Use the following DNS Server address

Preferred DNS Server

Alternate DNS Server

☐ Apply with profile proxy

**Obtain an IP Address Automatically:**

Choose this option to obtain an IP address automatically through a DHCP server.

**Assign the following IP Address:**

Choose this option to assign a static IP address.

**Obtain DNS Server Address Automatically:**

Choose this option to obtain a DNS server address automatically.

**Use the following DNS Server address:**

If you make this selection, enter the Preferred DNS server and the Alternate DNS server in the appropriate fields.



## Using the Configuration Utility (continued)

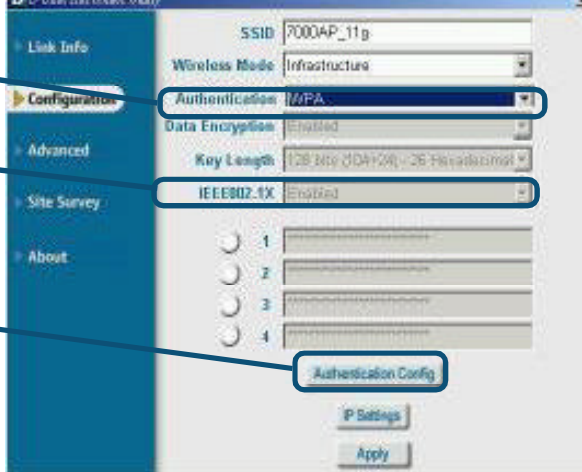
Authentication > WPA/WPA2 > 802.1X

### Configuration > WPA/WPA2

Select **WPA/WPA2** in the Authentication field

When you select WPA/WPA2, **802.1X** is Enabled.

Click **Authentication Config**




The *Advanced Security Settings* screen will appear, as shown below.

### Advanced Security Settings

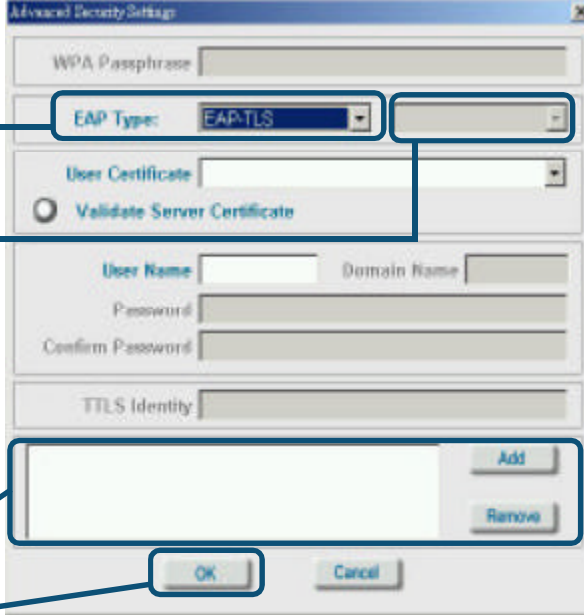
Select the **EAP Type** you want to use. Configure the information needed for authenticating.

Inner Authentication Protocol.

 For an explanation of the terms shown in this window please see the appendix.

Trusted CA List.

Click **OK**. The **WPA/WPA2** configuration is complete!



## Using the Configuration Utility (continued)

Authentication > WPA-PSK/WPA2-PSK > 802.1X

### Configuration > WPA-PSK/WPA2-PSK

Select **WPA-PSK/**  
**WPA2-PSK** in the  
*Authentication* field.

When you select WPA-  
PSK/WPA2-PSK, **802.1X** is  
*Disabled*.

Click  
**Authentication Config**



**WPA-PSK**  
does **not**  
require a  
RADIUS server in  
the network.

Enter the **WPA/WPA2**  
passphrase.

Click **OK**. The **WPA-  
PSK/WPA2-PSK**  
configuration is  
complete!

### Advanced Security Settings

## Using the Configuration Utility (continued)

### Frequency:

Select the network frequency from these options: **Auto**; **b 2.4GHz**; **b/g 2.4GHz**; or **a 5GHz**.

### Super A/G:

**Enable** or **Disable**.

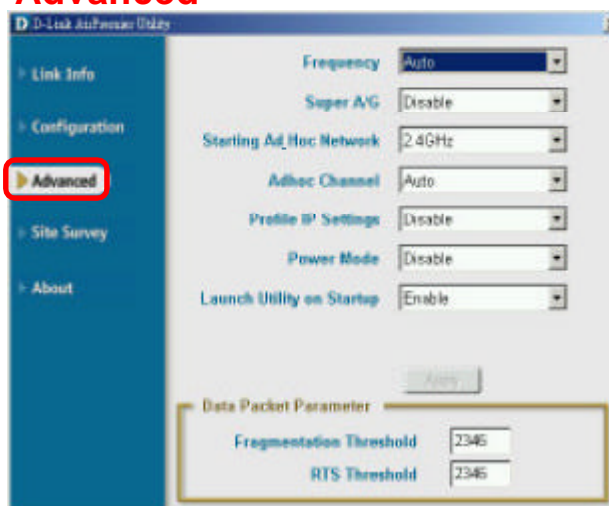
### Starting Ad-Hoc Network:

If you are configuring an Ad-Hoc network, select **2.4GHz** or **5GHz\***.

### Ad-Hoc Channel:

Select **Auto** or **1-11**.

## Advanced



### Profile IP Settings:

You can **Enable** or **Disable** the *IP Settings* portion of your profile here. If you select **Disable** you will need to configure the IP address information each time you connect to a network. If you select **Enable** you will maintain the same IP address information each time you connect to a network.

### Power Mode:

**Disable** - Saves no power.  
**Fast Save** - Moderate power-saving.  
**Max Save** - Saves the most power.

### Launch Utility on Startup:

Select **Enable** or **Disable**.

### Data Packet Parameter:

Set the *Fragmentation Threshold* and the *RTS Threshold*. Please see below.

### Fragmentation Threshold:

This value should remain at its default setting of 2346. If you experience a high packet error rate, you may slightly increase your fragmentation threshold within the value range of 256 to 2346. Setting the fragmentation threshold too low may result in poor performance.

### RTS Threshold:

This value should remain at its default setting of 2346. If inconsistent data flow is a problem, only a minor modification should be made.

*\*Due to DFS(Dynamic Frequency Selection), 5GHz Ad-Hoc mode is always disable in EEC countries.*

## Using the Configuration Utility (*continued*)

### Available Network:

The top section of the window displays the **Available Networks**. Scroll up and down the list and highlight the network to which you wish to connect. Click on the **Connect** button.

### Profile:

In the lower half of the screen, you can manage the profiles that you have created for the wireless network at home, at the office and in public places. Scroll up and down and highlight the profile that you wish to configure. You can **Add** or **Remove** a profile, or configure the **Properties** of the profile in order to connect with an available network.

### Refresh:

Click on **Refresh** to get the most updated list of available networks.

### Configure:

Highlight an existing network and click **Configure**; the configuration window on the next page will appear.

### Advanced:

Highlight a network; click **Advanced** and the screen on the next page will appear.

### Add:

Click **Add** and the screen on the next page will appear.

### Remove:

Highlight a network profile; click **Remove** to remove a network from the profile list.

### Properties:

Highlight a network profile; click **Properties** and the screen on the next page will appear.

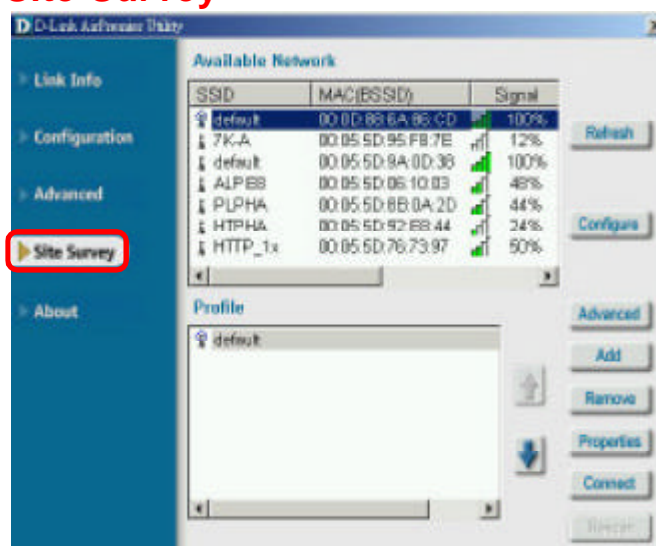
### Connect:

Highlight a network profile; click **Connect** to connect to that network.

### Rescan:

Click **Rescan** to rescan and connect to the strongest signal.

## Site Survey



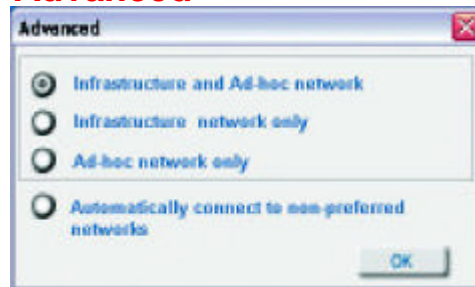
## Using the Configuration Utility (continued)

### Site Survey > Advanced, Add, Configuration or Properties

#### Advanced

In this window you can select the type of network connection that applies.

Click **OK** to save the changes.



#### Add, Configuration, Properties

If you clicked on **Add**, you can configure, in this window, all the properties of a profile that you wish to add to the network.

If you clicked on **Configuration** or **Properties** you can configure, in this window, all the properties of a profile that already exists in the network.



The **About** screen displays information regarding your DWL-AG660, including the MAC address, Utility version, Driver version, and Support Frequency.

#### About



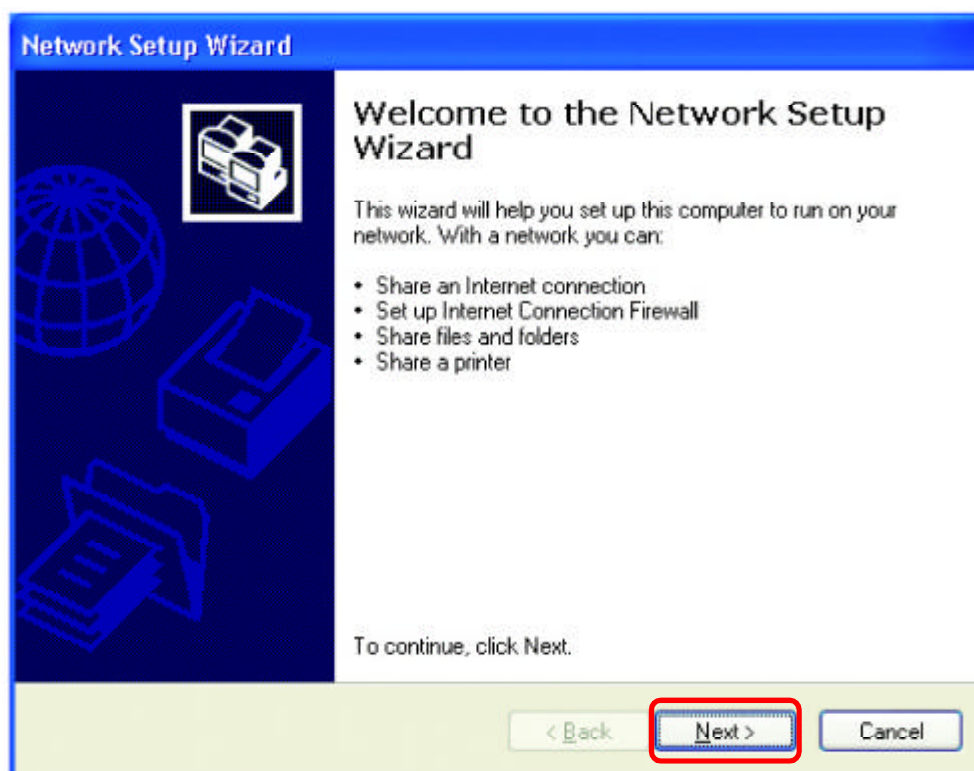
# Networking Basics

## Using the Network Setup Wizard in Windows XP

In this section you will learn how to establish a network at home or work, using **Microsoft Windows XP**.

*Note: Please refer to websites such as <http://www.homenethelp.com> and <http://www.microsoft.com/windows2000> for information about networking computers using Windows 2000/Me/98SE.*

Go to **Start>Control Panel>Network Connections**  
Select **Set up a home or small office network**

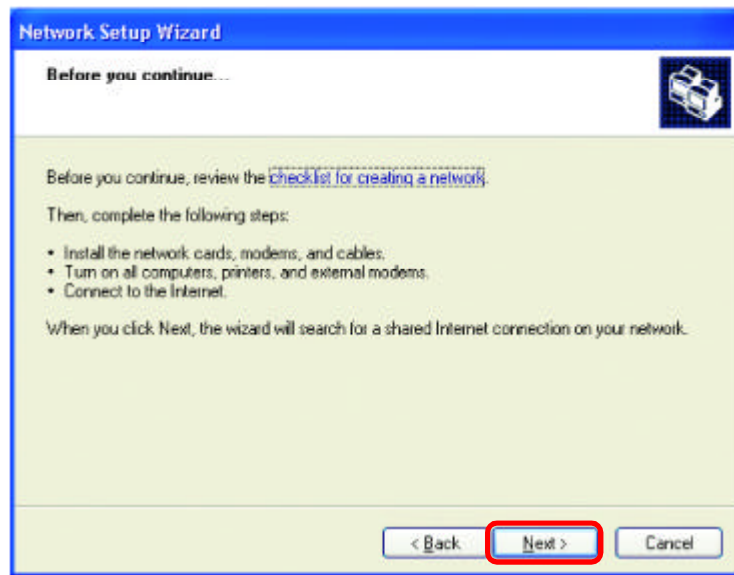


When this screen appears, click **Next**.



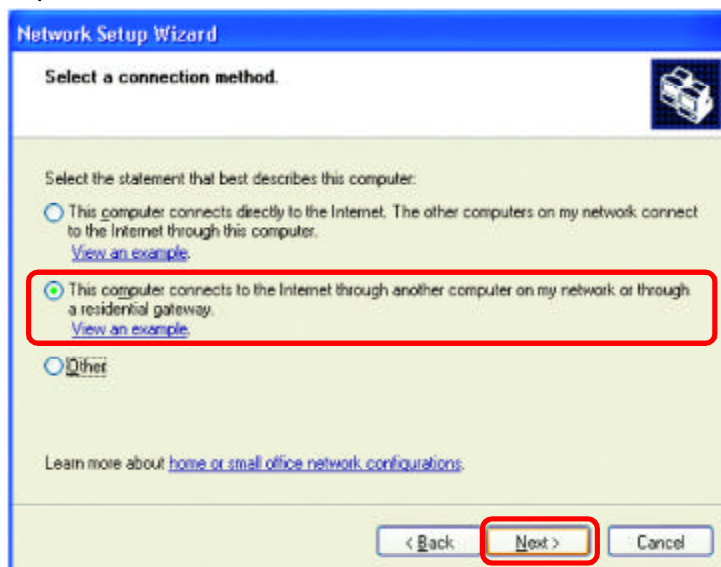
## Networking Basics (continued)

Please follow all the instructions in this window:



Click **Next**.

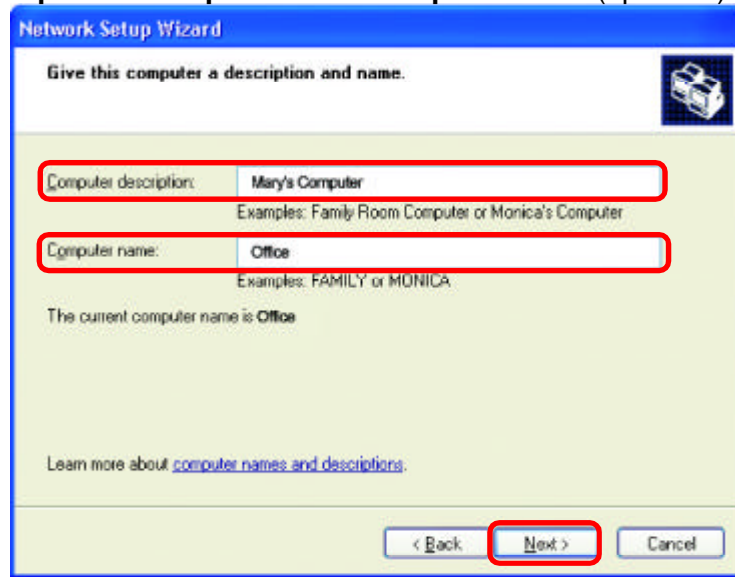
In the following window, select the best description of your computer. If your computer connects to the Internet through a gateway/router, select the second option as shown.



Click **Next**.

## Networking Basics (continued)

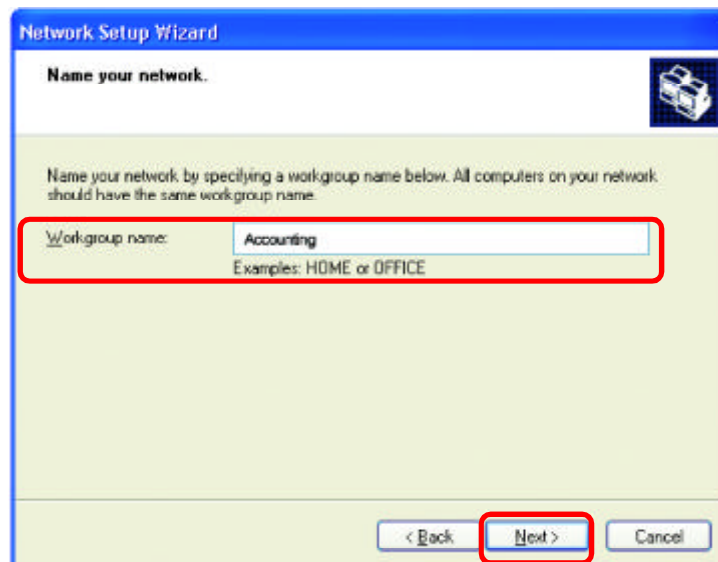
Enter a **Computer description** and a **Computer name** (optional.)



The screenshot shows the 'Network Setup Wizard' window with the title 'Give this computer a description and name.' The window has a blue header bar with a computer icon. Below the title bar, there are two text input fields. The first field is labeled 'Computer description:' and contains the text 'Mary's Computer'. Below it, there is a line of text: 'Examples: Family Room Computer or Monica's Computer'. The second field is labeled 'Computer name:' and contains the text 'Office'. Below it, there is a line of text: 'Examples: FAMILY or MONICA.'. Below these fields, there is a line of text: 'The current computer name is Office'. At the bottom of the window, there are three buttons: '< Back', 'Next >', and 'Cancel'. The 'Next >' button is highlighted with a red rectangle.

Click **Next**.

Enter a **Workgroup** name. All computers on your network should have the same **Workgroup name**.



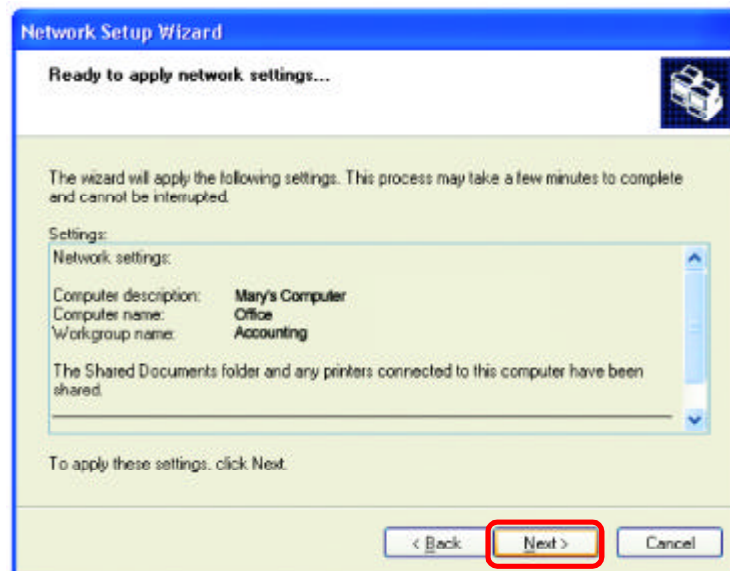
The screenshot shows the 'Network Setup Wizard' window with the title 'Name your network.' The window has a blue header bar with a computer icon. Below the title bar, there is a line of text: 'Name your network by specifying a workgroup name below. All computers on your network should have the same workgroup name.' Below this text, there is a text input field labeled 'Workgroup name:' containing the text 'Accounting'. Below the field, there is a line of text: 'Examples: HOME or OFFICE'. At the bottom of the window, there are three buttons: '< Back', 'Next >', and 'Cancel'. The 'Next >' button is highlighted with a red rectangle.

Click **Next**.



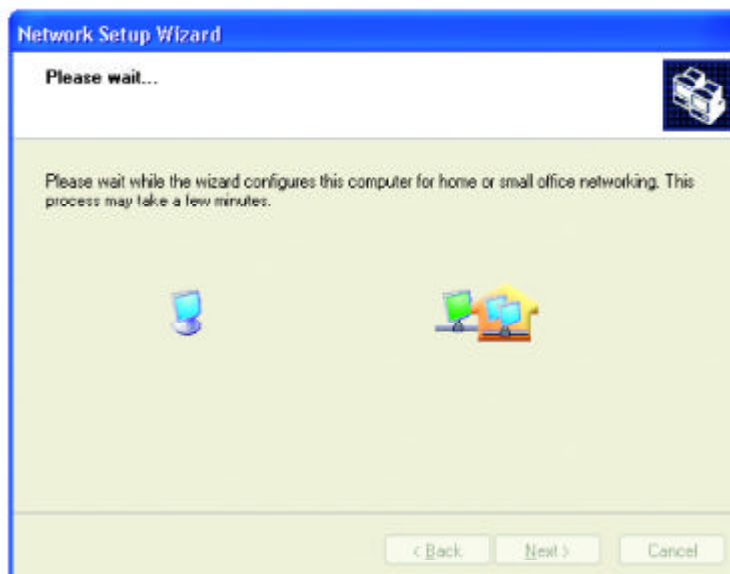
## Networking Basics (continued)

Please wait while the **Network Setup Wizard** applies the changes.



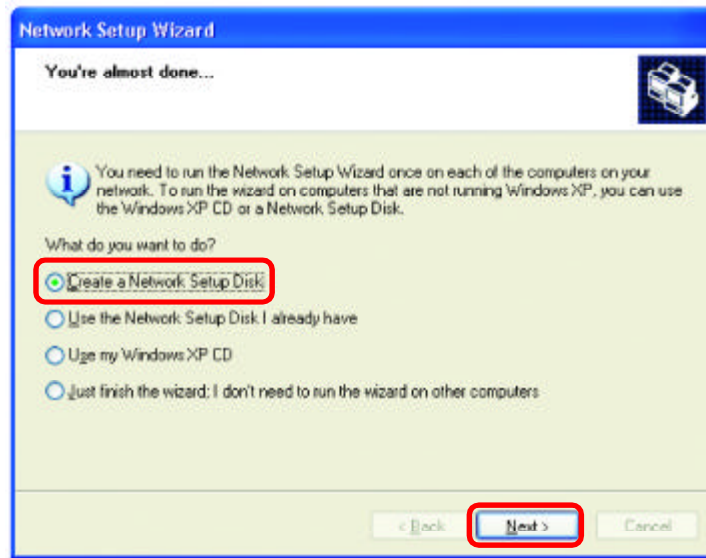
When the changes are complete, click **Next**.

Please wait while the **Network Setup Wizard** configures the computer. This may take a few minutes.

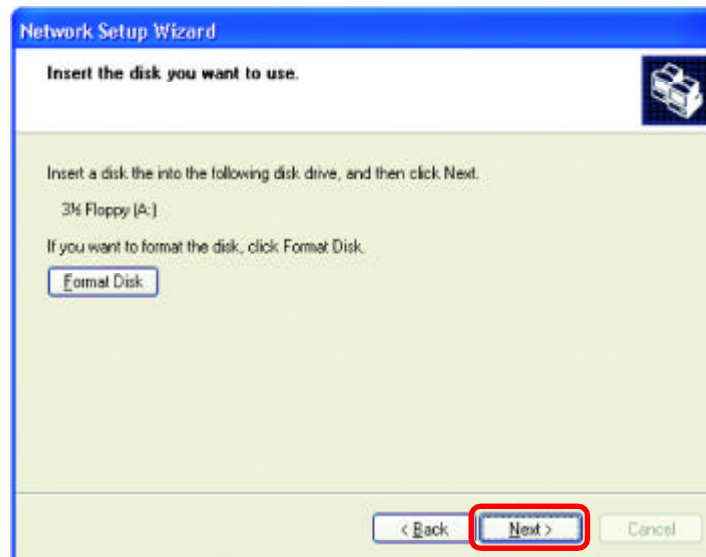


## Networking Basics (continued)

In the window below, select the option that fits your needs. In this example, **Create a Network Setup Disk** has been selected. You will run this disk on each of the computers on your network. Click **Next**.

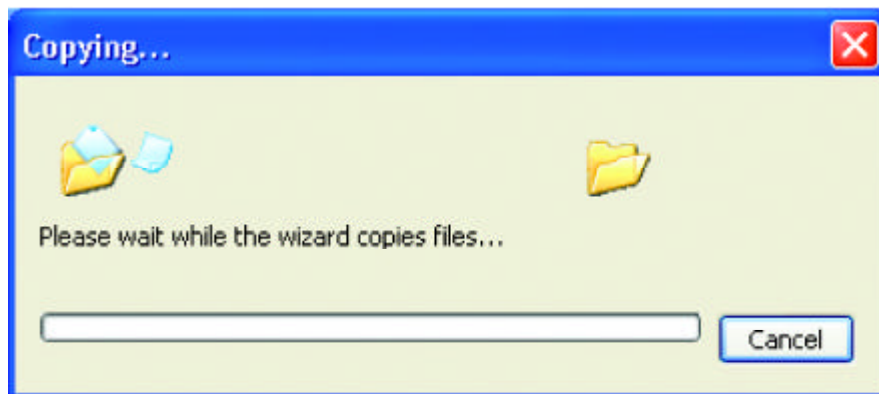


Insert a disk into the Floppy Disk Drive, in this case drive **A**.

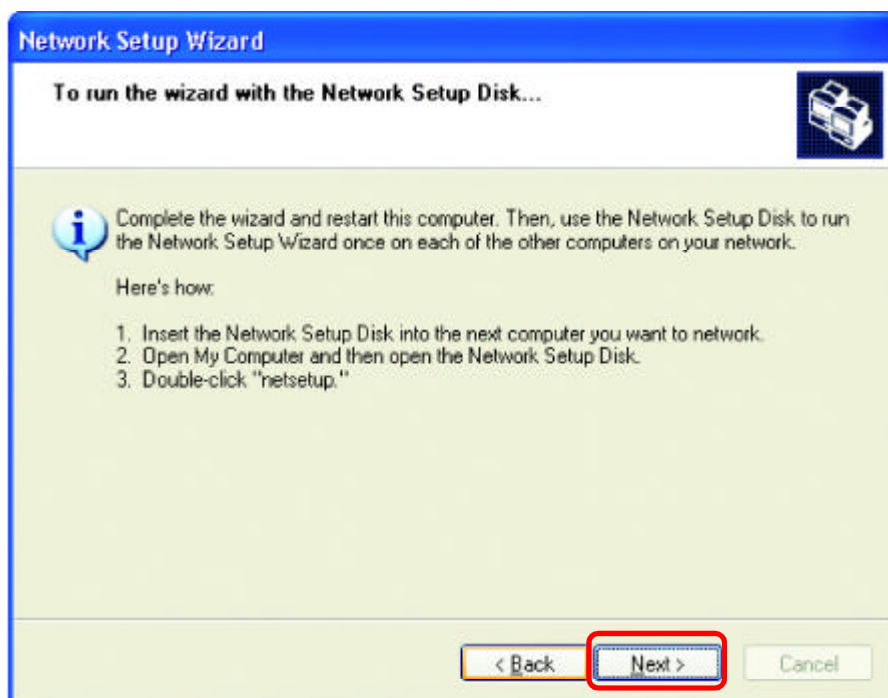


Click **Next**.

## Networking Basics (continued)



Please read the information under **Here's how** in the screen below. After you complete the **Network Setup Wizard** you will use the **Network Setup Disk** to run the **Network Setup Wizard** once on each of the computers on your network. To continue click **Next**.

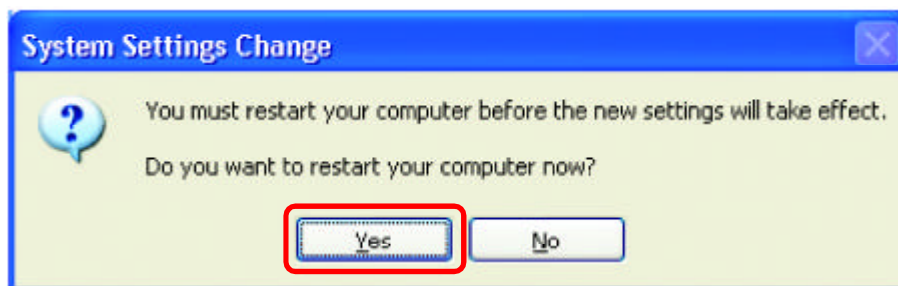


## Networking Basics (continued)

Please read the information on this screen, then click **Finish** to complete the **Network Setup Wizard**.



The new settings will take effect when you restart the computer. Click **Yes** to restart the computer.



You have completed configuring this computer. Next, you will need to run the **Network Setup Disk** on all the other computers on your network. After running the **Network Setup Disk** on all your computers, your new wireless network will be ready to use.

## Networking Basics (continued)

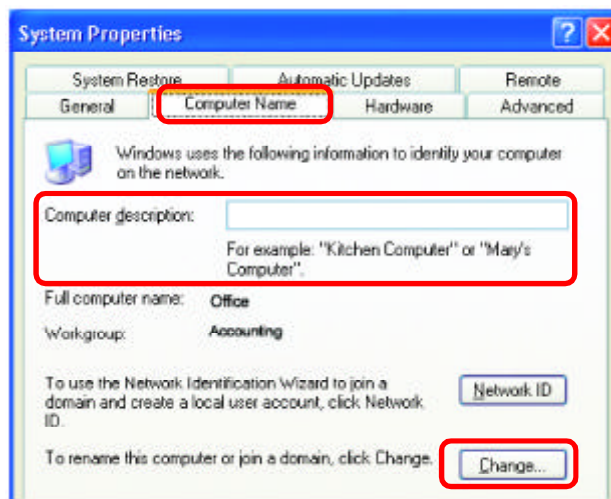
### Naming your Computer

To name your computer in **Windows XP**, please follow these directions:

- Click **Start** (in the lower left corner of the screen).
- **Right-click** on **My Computer**.
- Select **Properties** and click.



- Select the **Computer Name** Tab in the System Properties window.

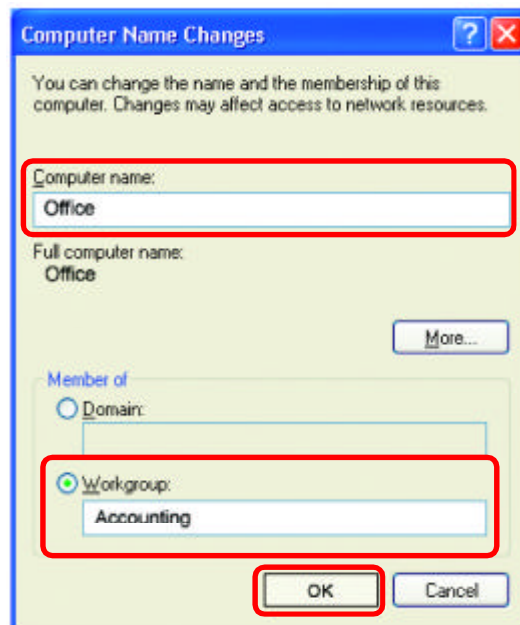


- You may enter a **Computer Description** if you wish; this field is optional.
- To rename the computer and join a domain, click **Change**.

## Networking Basics (continued)

### *Naming your Computer*

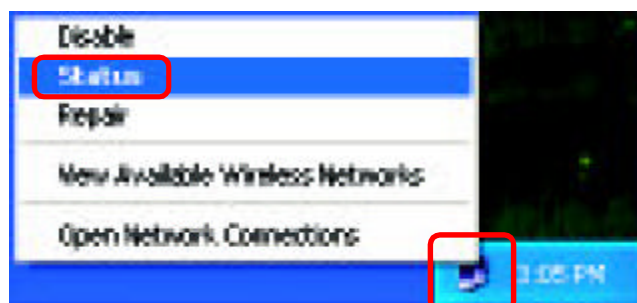
- In this window, enter the **Computer name**.
- Select **Workgroup** and enter the name of the **Workgroup**.
- All computers on your network must have the same **Workgroup** name.
- Click **OK**.



### *Checking the IP Address in Windows XP*

The wireless adapter-equipped computers in your network must be in the same IP address range (see Getting Started in this manual for a definition of IP address range). To check on the IP address of the adapter, please do the following:

- Right-click on the **Local Area Connection icon** in the task bar.
- Click on **Status**.



## Networking Basics (continued)

### Checking the IP Address in Windows XP

This window will appear.

- Click the **Support** tab.

- Click **Close**.



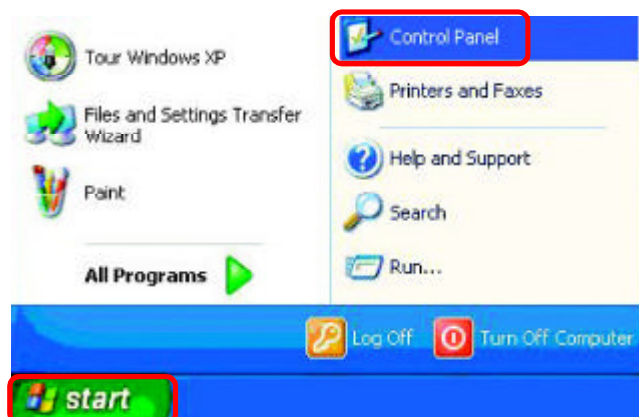
### Assigning a Static IP Address in Windows XP/2000

*Note: DHCP-capable routers will automatically assign IP addresses to the computers on the network, using DHCP (Dynamic Host Configuration Protocol) technology. If you are using a DHCP-capable gateway/router you will not need to assign static IP addresses.*

If you are not using a DHCP capable gateway/router, or you need to assign a static IP address, please follow these instructions:

- Go to **Start**.

- Double-click on **Control Panel**.

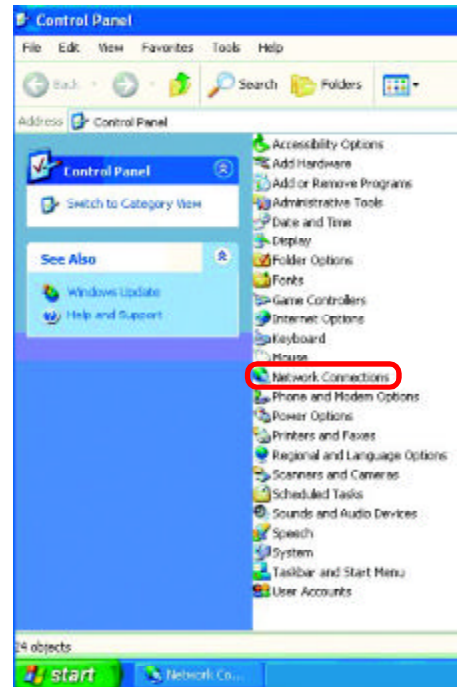




## Networking Basics (continued)

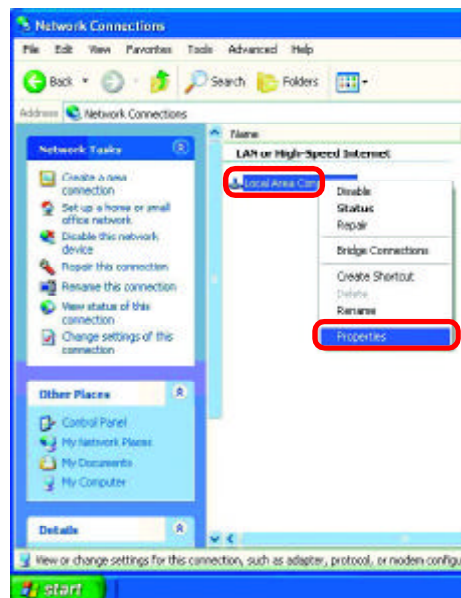
### *Assigning a Static IP Address in Windows XP/2000*

- Double-click on **Network Connections**.



- Right-click on **Local Area Connections**.

- Double-click on **Properties**.





## Networking Basics (continued)

### Assigning a Static IP Address in Windows XP/2000

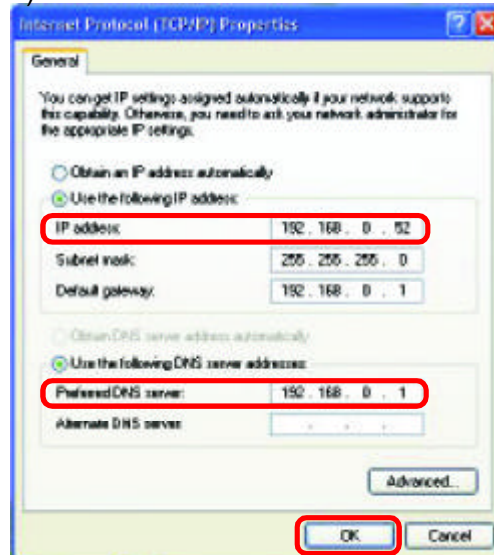
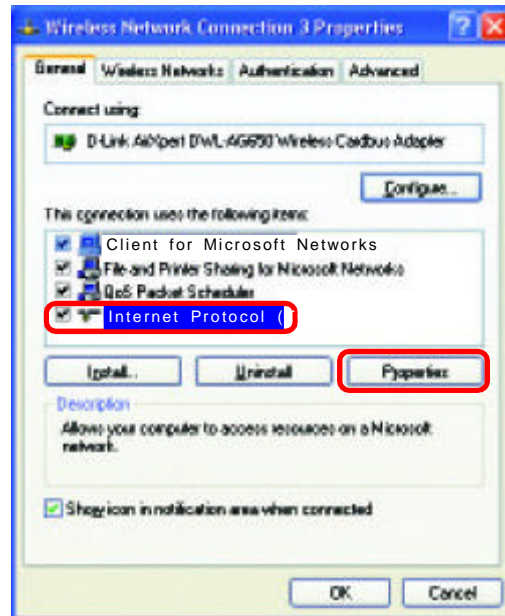
- Click on **Internet Protocol (TCP/IP)**.
- Click **Properties**.
- In the window below, select **Use the following IP address**. Input your **IP address and subnet mask**. (The IP addresses on your network must be within the same range. For example, if one computer has an IP address of 192.168.0.2, the other computers should have IP addresses that are sequential, like 192.168.0.3 and 192.168.0.4. The subnet mask must be the same for all the computers on the network).

**IP Address:**  
e.g., 192.168.0.2

**Subnet Mask:**  
255.255.255.0

**Default Gateway:**  
Enter the LAN IP address of the wireless router. (D-Link wireless routers have a LAN IP address of 192.168.0.1).

- Select **Use the following DNS server addresses**. Enter the LAN IP address of the wireless router. (D-Link wireless routers have a LAN IP address of 192.168.0.1).
- Click **OK**.

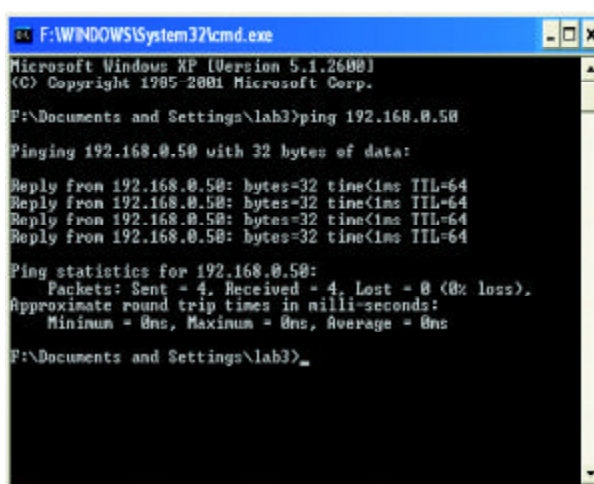


*You have completed the assignment of a static IP address. (You do not need to assign a static IP address if you have a DHCP-capable gateway/router).*

## Networking Basics (continued)

### Checking the Wireless Connection by Pinging in Windows XP/2000

- Go to **Start > Run** > type **cmd**. A window similar to this one will appear. Type **ping xxx.xxx.xxx.xxx**, where **xxx** is the **IP address** of the wireless router or access point. A good wireless connection will show four replies from the wireless router or access point, as shown.



```
F:\WINDOWS\System32\cmd.exe
Microsoft Windows XP [Version 5.1.2600]
(C) Copyright 1985-2001 Microsoft Corp.

F:\Documents and Settings\lab3>ping 192.168.0.50

Pinging 192.168.0.50 with 32 bytes of data:

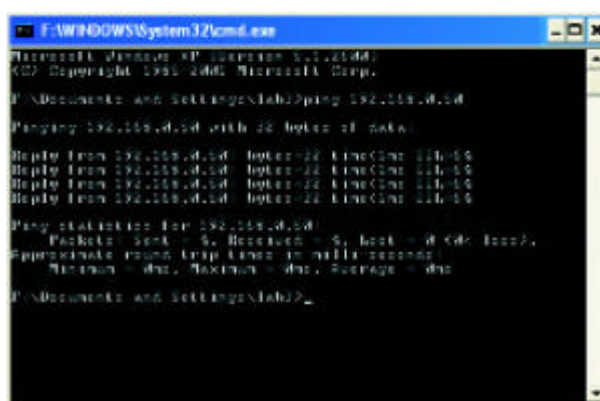
Reply from 192.168.0.50: bytes=32 time<1ms TTL=64
Reply from 192.168.0.50: bytes=32 time<1ms TTL=64
Reply from 192.168.0.50: bytes=32 time<1ms TTL=64
Reply from 192.168.0.50: bytes=32 time<1ms TTL=64

Ping statistics for 192.168.0.50:
    Packets: Sent = 4, Received = 4, Lost = 0 (0% loss),
    Approximate round trip times in milli-seconds:
        Minimum = 0ms, Maximum = 0ms, Average = 0ms

F:\Documents and Settings\lab3>
```

### Checking the Wireless Connection by Pinging in Windows Me/98SE

- Go to **Start > Run** > type **command**. A window similar to this will appear. Type **ping xxx.xxx.xxx.xxx** where **xxx** is the **IP address** of the wireless router or access point. A good wireless connection will show four replies from the wireless router or access point, as shown.



```
F:\WINDOWS\System32\cmd.exe
Microsoft Windows XP [Version 5.1.2600]
(C) Copyright 1985-2001 Microsoft Corp.

F:\Documents and Settings\lab3>ping 192.168.0.50

Pinging 192.168.0.50 with 32 bytes of data:

Reply from 192.168.0.50: bytes=32 time<1ms TTL=64
Reply from 192.168.0.50: bytes=32 time<1ms TTL=64
Reply from 192.168.0.50: bytes=32 time<1ms TTL=64
Reply from 192.168.0.50: bytes=32 time<1ms TTL=64

Ping statistics for 192.168.0.50:
    Packets: Sent = 4, Received = 4, Lost = 0 (0% loss),
    Approximate round trip times in milli-seconds:
        Minimum = 0ms, Maximum = 0ms, Average = 0ms

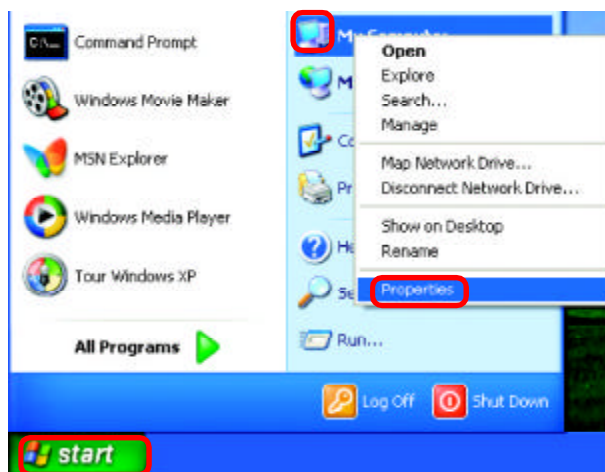
F:\Documents and Settings\lab3>
```

# Troubleshooting

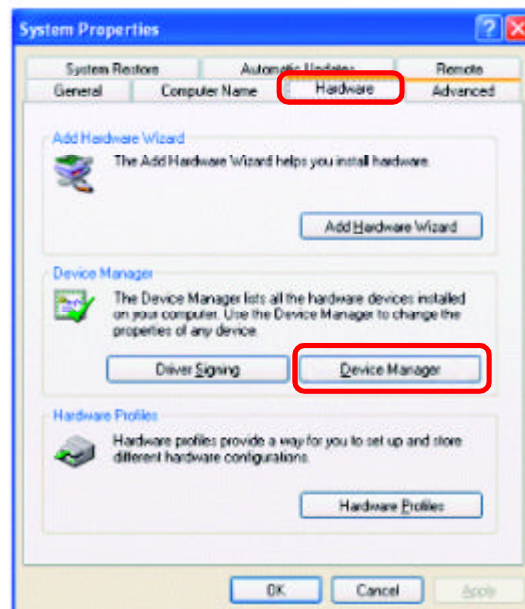
This chapter provides solutions to problems that can occur during the installation and operation of the DWL-AG660. Read the following descriptions if you are having problems. (The examples below are illustrated in Windows XP. If you have a different operating system, the screenshots on your computer will look similar to the following examples).

## 1. How do I check that the drivers for the DWL-AG660 are installed properly?

- Go to **Start > My Computer > Properties**.



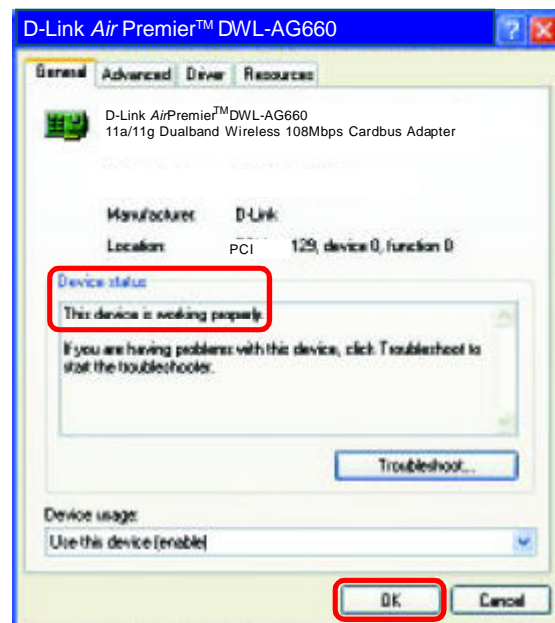
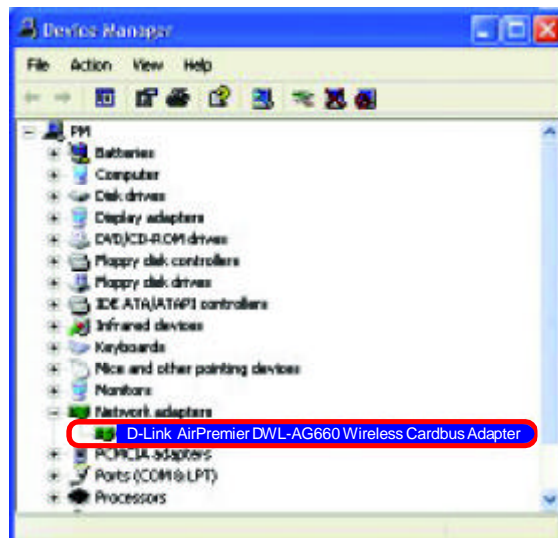
- Select the **Hardware Tab**.



- Click **Device Manager**.

## Troubleshooting (continued)

- Double-click on **Network adapters**.
- Right-click on **D-Link AirPremier DWL-AG660 Wireless Cardbus Adapter**.
- Select **Properties** to check that the drivers are installed properly.
- Look under **Device Status** to check that the device is working properly.
- Click **OK**.



## Troubleshooting (continued)

### 2. I cannot connect to the access point or the wireless router.

- Make sure that the SSID on the D-Link DWL-AG660 Wireless Cardbus Adapter is exactly the same as the SSID on the access point or wireless router.
- Move the DWL-AG660 and access point or wireless router into the same room and then test the wireless connection.
- Disable all security settings. (WEP, MAC Address Control, AES).
- Make sure that the access point/router is not set to a different frequency.
- Turn off your access point and the computer with the DWL-AG660. Turn on the access point, and then turn on the computer with the DWL-AG660.
- Refresh the DWL-AG660 Utility.
- Make sure that the 802.11a access point and the adapter is set to channel 52 and above in the 802.11a band, because the DWL-AG660 does not support channels 36-48 in the 802.11a band.

### 3. The DWL-AG660 Power and Link lights are not on.

- Check to see if the DWL-AG660 Cardbus adapter is firmly inserted into the Cardbus slot of your laptop computer.

### 4. I forgot my Encryption key.

- Reset the access point to its factory default settings and restore the DWL-AG660 Cardbus adapter to the factory default settings.

### 5. The computer does not recognize the D-Link DWL-AG660 Wireless Cardbus Adapter.

- Make sure that the D-Link DWL-AG660 Wireless Cardbus Adapter is properly seated in the computer's Cardbus slot.
- If Windows does not detect the hardware upon insertion of the adapter, make sure to completely remove drivers that were previously loaded. To remove the drivers, do the following:

## Troubleshooting (continued)

- A. Under **Tools**> select **Folder Options...**> select **View** > under **Hidden files and folders** > select **Show hidden files and folders**.
- B. Uncheck **Hide extension for known file types** > click on **Apply**.
- C. Search for previously loaded driver files. Remove these files from the **INF** and **SYSTEM32 (DRIVERS)** folders in the Windows directory. Note: Windows XP and Windows 2000 will rename **.inf** files that have not received WHQL certification into **oem.inf** files (e.g., **oem1.inf**).

### 6. The computer with the DWL-AG660 installed is unable to connect to the wireless network and/or the Internet.

- Check that the LED indicators for the broadband modem are indicating normal activity. If not, there may be a problem with the broadband connection.
- Check that the LED indicators on the wireless router are functioning properly. If not, check that the AC power and Ethernet cables are firmly connected.
- Check that the IP address, subnet mask, gateway, and DNS settings are correctly entered for the network.
- In **Infrastructure** mode, make sure the same **Service Set Identifier (SSID)** is specified on the settings for the wireless clients and access points. The **SSID** factory default setting for the D-Link products is **default**. (Double-click on the WLAN icon in the taskbar. The **Link Info** screen will display the SSID setting).
- In **Ad-Hoc\*** mode, both wireless clients will need to have the same **SSID**. Please note that it might be necessary to set up one client to establish a **BSS (Basic Service Set)** and wait briefly before setting up other clients. This prevents several clients from trying to establish a **BSS** at the same time, which can result in multiple singular **BSSs** being established, rather than a single **BSS** with multiple clients associated to it.

*\*Due to DFS(Dynamic Frequency Selection), 5GHz Ad-Hoc mode is always disable in EEC countries.*

## Troubleshooting (continued)

- Check that the **Network Connection** for the wireless client is configured properly. Select **AP (Infrastructure)** when connecting to an access point and select **Ad-Hoc\* mode** when connecting without an access point. Double-click on the **WLAN icon** in the taskbar > click on **Configuration** to change the settings for the wireless adapter.
- If **Security** is enabled, make sure that the correct encryption keys are entered on both the DWL-AG660 and the access point. Double-click on the **WLAN** icon in the taskbar > click **Encryption**. Check to see that the key selected is set to the same key as other devices on the network.
- If **SuperA/G** is enabled, make sure that Turbo mode is enabled on all Turbo mode compatible devices in your network, in order to communicate.

### 7. How can I avoid connection problems using the DWL-AG660?

- Move the DWL-AG660 and the access point or wireless router into the same room and then test the wireless connection.
- Change the channel of the access point.
- Move devices within the line of sight.

*\*Due to DFS(Dynamic Frequency Selection), 5GHz Ad-Hoc mode is always disable in EEC countries.*



# Technical Specifications

## Standards

- IEEE 802.11
- IEEE 802.11a
- IEEE 802.11b
- IEEE 802.11g

## Bus Type

- 32-bit Cardbus

## Temperature

- Operating: 32°F to 131°F (0°C to 55°C)

## Humidity:

- 95% maximum, non-condensing

## Internal Antenna Type:

- Dual Antenna Diversity Switching

## Security:

- 64, 128-bit WEP
- 802.1X
- WPA/WPA2 - (Wi-Fi Protected Access)/(Wi-Fi Protected Access 2™), 64-, 128-bit WEP with TKIP, MIC, IV Expansion, Shared Key Authentication
- Supports Advanced Encryption Standard (AES)

## Physical Dimensions:

- L = 4.64 inches (114.3mm)
- W = 2.13 inches (54mm)
- H = 0.34 inches (8.7mm)

## Weight:

- 0.12 lb. (55 grams)



## Technical Specifications (continued)

### Data Rates:

With Automatic Fallback

- 108Mbps (Turbo Mode); 54Mbps; 48Mbps; 36Mbps; 24Mbps; 18Mbps; 12Mbps; 11Mbps; 9Mbps; 6Mbps; 5.5Mbps; 2Mbps; 1Mbps

### Media Access Control:

- CSMA/CA with ACK

### Frequency Range:

- 2.420GHz to 2.4835GHz
- 5.150GHz to 5.875GHz

### Range:

- Indoors: Up to 328 feet (100 meters)

### Power Consumption:

- PowerSave mode = 70mW
- Standby mode = 1250mW
- Transmit mode = 1650mW

### Modulation Technology:

- Orthogonal Frequency Division Multiplexing (OFDM)
- Complementary Code Keying (CCK)
- Direct Sequence Spread Spectrum (DSSS)

### Receiver Sensitivity:

- |                                |                               |
|--------------------------------|-------------------------------|
| ■ 54Mbps OFDM, 10% PER, -73dBm | ■ 11Mbps CCK, 8% PER, -91dBm  |
| ■ 48Mbps OFDM, 10% PER, -76dBm | ■ 9Mbps OFDM, 10% PER, -90dBm |
| ■ 36Mbps OFDM, 10% PER, -82dBm | ■ 6Mbps OFDM, 10% PER, -91dBm |
| ■ 24Mbps OFDM, 10% PER, -85dBm | ■ 5.5Mbps CCK, 8% PER, -92dBm |
| ■ 18Mbps OFDM, 10% PER, -88dBm | ■ 2Mbps QPSK, 8% PER, -93dBm  |
| ■ 12Mbps OFDM, 10% PER, -89dBm | ■ 1Mbps BPSK, 8% PER, -94dBm  |

### LEDs:

- Link
- Activity

### Transmitter Output Power:

- 15dBm  $\pm$  2dB

# Warranty and Registration

## (USA only)

Subject to the terms and conditions set forth herein, D-Link Systems, Inc. ("D-Link") provides this Limited warranty for its product only to the person or entity that originally purchased the product from:

- D-Link or its authorized reseller or distributor and
- Products purchased and delivered within the fifty states of the United States, the District of Columbia, U.S. Possessions or Protectorates, U.S. Military Installations, addresses with an APO or FPO.

**Limited Warranty:** D-Link warrants that the hardware portion of the D-Link products described below will be free from material defects in workmanship and materials from the date of original retail purchase of the product, for the period set forth below applicable to the product type ("Warranty Period"), except as otherwise stated herein.

3-Year Limited Warranty for the Product(s) is defined as follows:

- Hardware (excluding power supplies and fans) Three (3) Years
- Power Supplies and Fans One (1) Year
- Spare parts and spare kits Ninety (90) days

D-Link's sole obligation shall be to repair or replace the defective Hardware during the Warranty Period at no charge to the original owner or to refund at D-Link's sole discretion. Such repair or replacement will be rendered by D-Link at an Authorized D-Link Service Office. The replacement Hardware need not be new or have an identical make, model or part. D-Link may in its sole discretion replace the defective Hardware (or any part thereof) with any reconditioned product that D-Link reasonably determines is substantially equivalent (or superior) in all material respects to the defective Hardware. Repaired or replacement Hardware will be warranted for the remainder of the original Warranty Period from the date of original retail purchase. If a material defect is incapable of correction, or if D-Link determines in its sole discretion that it is not practical to repair or replace the defective Hardware, the price paid by the original purchaser for the defective Hardware will be refunded by D-Link upon return to D-Link of the defective Hardware. All Hardware (or part thereof) that is replaced by D-Link, or for which the purchase price is refunded, shall become the property of D-Link upon replacement or refund.

**Limited Software Warranty:** D-Link warrants that the software portion of the product ("Software") will substantially conform to D-Link's then current functional specifications for the Software, as set forth in the applicable documentation, from the date of original retail purchase of the Software for a period of ninety (90) days ("Warranty Period"), provided that the Software is properly installed on approved hardware and operated as contemplated in its documentation. D-Link further warrants that, during the Warranty Period, the magnetic media on which D-Link delivers the Software will be free of physical defects. D-Link's sole obligation shall be to replace the non-conforming Software (or defective media) with software that substantially conforms to D-Link's functional specifications for the Software or to refund at D-Link's sole discretion. Except as otherwise agreed by D-Link in writing, the replacement Software is provided only to the original licensee, and is subject to the terms and conditions of the license granted by D-Link for the Software. Software will be warranted for the remainder of the original Warranty Period from the date of original retail purchase. If a material non-conformance is incapable of correction, or if D-Link determines in its sole discretion that it is not practical to replace the non-conforming Software, the price paid by the original licensee for the non-conforming Software will be refunded by D-Link; provided that the non-conforming Software (and all copies thereof) is first returned to D-Link. The license granted respecting any Software for which a refund is given automatically terminates.

**Non-Applicability of Warranty:** The Limited Warranty provided hereunder for hardware and software of D-Link's products will not be applied to and does not cover any refurbished product and any product purchased through the inventory clearance or liquidation sale or other sales in which D-Link, the sellers, or the liquidators expressly disclaim their warranty obligation pertaining to the product and in that case, the product is being sold "As-Is" without any warranty whatsoever including, without limitation, the Limited Warranty as described herein, notwithstanding anything stated herein to the contrary.

**Submitting A Claim:** The customer shall return the product to the original purchase point based on its return policy. In case the return policy period has expired and the product is within warranty, the customer shall submit a claim to D-Link as outlined below:

- The customer must submit with the product as part of the claim a written description of the Hardware defect or Software nonconformance in sufficient detail to allow D-Link to confirm the same.
- The original product owner must obtain a Return Material Authorization ("RMA") number from the Authorized D-Link Service Office and, if requested, provide written proof of purchase of the product (such as a copy of the dated purchase invoice for the product) before the warranty service is provided.
- After an RMA number is issued, the defective product must be packaged securely in the original or other suitable shipping package to ensure that it will not be damaged in transit, and the RMA number must be prominently marked on the outside of the package. Do not include any manuals or accessories in the shipping package. D-Link will only replace the defective portion of the Product and will not ship back any accessories.
- The customer is responsible for all in-bound shipping charges to D-Link. No Cash on Delivery ("COD") is allowed. Products sent COD will either be rejected by D-Link or become the property of D-Link. Products shall be fully insured by the customer. D-Link will not be held responsible for any packages that are lost in transit to D-Link. The repaired or replaced packages will be shipped to the customer via UPS Ground or any common carrier selected by D-Link, with shipping charges prepaid. Expedited shipping is available if shipping charges are prepaid by the customer and upon request.
- Return Merchandise Ship-To Address  
**USA:** 17595 Mt. Herrmann, Fountain Valley, CA 92708-4160  
**Canada:** 2180 Winston Park Drive, Oakville, ON, L6H 5W1 (Visit <http://www.dlink.ca> for detailed warranty information within Canada)

D-Link may reject or return any product that is not packaged and shipped in strict compliance with the foregoing requirements, or for which an RMA number is not visible from the outside of the package. The product owner agrees to pay D-Link's reasonable handling and return shipping charges for any product that is not packaged and shipped in accordance with the foregoing requirements, or that is determined by D-Link not to be defective or non-conforming.

**What Is Not Covered:** This limited warranty provided by D-Link does not cover: Products, if in D-Link's judgment, have been subjected to abuse, accident, alteration, modification, tampering, negligence, misuse, faulty installation, lack of reasonable care, repair or service in any way that is not contemplated in the documentation for the product, or if the model or serial number has been altered, tampered with, defaced or removed; Initial installation, installation and removal of the product for repair, and shipping costs; Operational adjustments covered in the operating manual for the product, and normal maintenance; Damage that occurs in shipment, due to act of God, failures due to power surge, and cosmetic damage; Any hardware, software, firmware or other products or services provided by anyone other than D-Link; Products that have been purchased from inventory clearance or liquidation sales or other sales in which D-Link, the sellers, or the liquidators expressly disclaim their warranty obligation pertaining to the product. Repair by anyone other than D-Link or an Authorized D-Link Service Office will void this Warranty.

**Disclaimer of Other Warranties:** EXCEPT FOR THE LIMITED WARRANTY SPECIFIED HEREIN, THE PRODUCT IS PROVIDED "AS-IS" WITHOUT ANY WARRANTY OF ANY KIND WHATSOEVER INCLUDING, WITHOUT LIMITATION, ANY WARRANTY OF MERCHANTABILITY, FITNESS FOR A PARTICULAR PURPOSE AND NON-INFRINGEMENT. IF ANY IMPLIED WARRANTY CANNOT BE DISCLAIMED IN ANY TERRITORY WHERE A PRODUCT IS SOLD, THE DURATION OF SUCH IMPLIED WARRANTY SHALL BE LIMITED TO NINETY (90) DAYS. EXCEPT AS EXPRESSLY COVERED UNDER THE LIMITED WARRANTY PROVIDED HEREIN, THE ENTIRE RISK AS TO THE QUALITY, SELECTION AND PERFORMANCE OF THE PRODUCT IS WITH THE PURCHASER OF THE PRODUCT.

**Limitation of Liability:** TO THE MAXIMUM EXTENT PERMITTED BY LAW, D-LINK IS NOT LIABLE UNDER ANY CONTRACT, NEGLIGENCE, STRICT LIABILITY OR OTHER LEGAL OR EQUITABLE THEORY FOR ANY LOSS OF USE OF THE PRODUCT, INCONVENIENCE OR DAMAGES OF ANY CHARACTER, WHETHER DIRECT, SPECIAL, INCIDENTAL OR CONSEQUENTIAL (INCLUDING, BUT NOT LIMITED TO, DAMAGES FOR LOSS OF GOODWILL, LOSS OF REVENUE OR PROFIT, WORK STOPPAGE, COMPUTER FAILURE OR MALFUNCTION, FAILURE OF OTHER EQUIPMENT OR COMPUTER PROGRAMS TO WHICH D-LINK'S PRODUCT IS CONNECTED WITH, LOSS OF INFORMATION OR DATA CONTAINED IN, STORED ON, OR INTEGRATED WITH ANY PRODUCT RETURNED TO D-LINK FOR WARRANTY SERVICE) RESULTING FROM THE USE OF THE PRODUCT, RELATING TO WARRANTY SERVICE, OR ARISING OUT OF ANY BREACH OF THIS LIMITED WARRANTY, EVEN IF D-LINK HAS BEEN ADVISED OF THE POSSIBILITY OF SUCH DAMAGES. THE SOLE REMEDY FOR A BREACH OF THE FOREGOING LIMITED WARRANTY IS REPAIR, REPLACEMENT OR REFUND OF THE DEFECTIVE OR NON-CONFORMING PRODUCT. THE MAXIMUM

LIABILITY OF D-LINK UNDER THIS WARRANTY IS LIMITED TO THE PURCHASE PRICE OF THE PRODUCT COVERED BY THE WARRANTY. THE FOREGOING EXPRESS WRITTEN WARRANTIES AND REMEDIES ARE EXCLUSIVE AND ARE IN LIEU OF ANY OTHER WARRANTIES OR REMEDIES, EXPRESS, IMPLIED OR STATUTORY.

**Governing Law:** This Limited Warranty shall be governed by the laws of the State of California. Some states do not allow exclusion or limitation of incidental or consequential damages, or limitations on how long an implied warranty lasts, so the foregoing limitations and exclusions may not apply. This limited warranty provides specific legal rights and the product owner may also have other rights which vary from state to state.

**Trademarks:** D-Link is a registered trademark of D-Link Systems, Inc. Other trademarks or registered trademarks are the property of their respective manufacturers or owners.

**Copyright Statement:** No part of this publication or documentation accompanying this Product may be reproduced in any form or by any means or used to make any derivative such as translation, transformation, or adaptation without permission from D-Link Corporation/D-Link Systems, Inc., as stipulated by the United States Copyright Act of 1976. Contents are subject to change without prior notice. Copyright© 2002 by D-Link Corporation/D-Link Systems, Inc. All rights reserved.

**CE Mark Warning:** This is a Class B product. In a domestic environment, this product may cause radio interference, in which case the user may be required to take adequate measures.

**FCC Statement:** This equipment has been tested and found to comply with the limits for a Class B digital device, pursuant to part 15 of the FCC Rules. These limits are designed to provide reasonable protection against harmful interference in a residential installation. This equipment generates, uses, and can radiate radio frequency energy and, if not installed and used in accordance with the instructions, may cause harmful interference to radio communication. However, there is no guarantee that interference will not occur in a particular installation. If this equipment does cause harmful interference to radio or television reception, which can be determined by turning the equipment off and on, the user is encouraged to try to correct the interference by one or more of the following measures:

- Reorient or relocate the receiving antenna.
- Increase the separation between the equipment and receiver.
- Connect the equipment into an outlet on a circuit different from that to which the receiver is connected.
- Consult the dealer or an experienced radio/TV technician for help.

**For detailed warranty outside the United States, please contact corresponding local D-Link office.**

**FCC Caution:**

The manufacturer is not responsible for any radio or TV interference caused by unauthorized modifications to this equipment; such modifications could void the user's authority to operate the equipment.

(1) The devices are restricted to indoor operations within the 5.15 to 5.25GHz range. (2) For this device to operate in the 5.15 to 5.25GHz range, the device must use integral antennas.

This device complies with Part 15 of the FCC Rules. Operation is subject to the following two conditions: (1) This device may not cause harmful interference, and (2) this device must accept any interference received, including interference that may cause undesired operation.

**IMPORTANT NOTE:**

**FCC Radiation Exposure Statement:**

This equipment complies with FCC radiation exposure limits set forth for an uncontrolled environment. The antenna(s) used for this equipment must be installed to provide a separation distance of at least eight inches (20 cm) from all persons.

This equipment must not be operated in conjunction with any other antenna.

**Register your D-Link product online at <http://support.dlink.com/register/>**

# Appendix

## EAP Types

Configuration > Advanced Security Settings > EAP Types

EAP Type	Inner Authentication Protocol	Information needed for Authenticating
EAP-TLS		Certificate User Name
LEAP		User Name Password
EAP-TTLS	PAP	TTLS Identity User Name Password
	CHAP	TTLS Identity User Name Password
	MSCHAP	TTLS Identity User Name Password Domain Name
	MSCHAPv2	TTLS Identity User Name Password Domain Name

## Appendix

### EAP Types (continued)

EAP Type	Inner Authentication Protocol	Information needed for Authenticating
EAP-TTLS	EAP-MD5	TTLS Identity User Name Password
	EAP- Generic Token Card	TTLS Identity User Name Password
	EAP-MSCHAPv2	TTLS Identity User Name Password Domain Name
PEAP	EAP-MD5	User Name Password
	EAP-MSCHAPv2	User Name Password Domain Name
	EAP- Generic Token Card	User Name Password

### Definitions of Terms

#### Validate Server Certificate:

Check **Validate Server Certificate** to verify the identity of the authentication server based on its certificate when using EAP-TTLS, PEAP, and EAP-TLS. (This is checked by default.)

Certain protocols, such as EAP-TTLS, PEAP, and EAP-TLS, allow you to verify the identity of the authentication server as the server verifies your identity. This is called mutual authentication.

You can select trusted authentication server certificates using the **Add** button at the **Trusted CA List** (at the bottom of the **Advanced Security Settings** page).

## Appendix

### Definitions of Terms (continued)

#### Domain Name:

Each server has a domain name that uniquely identifies it. That domain name is normally contained in the **Subject CN** field of the server certificate. A server domain name ends with the name of a larger administrative domain, to which the server belongs.

#### TTLS Identity:

EAP-TTLS has a unique feature that other protocols do not offer. Because it sets up an encrypted tunnel for your credentials, it is also able to pass your login name through that tunnel. That means that not only are your credentials secure from eavesdropping, but your identity is protected as well. Thus, with EAP-TTLS you have two identities: an inner one, and an outer one. The inner identity is your actual user name. Your outer identity can be completely anonymous. Set your outer identity in the **TTLS Identity** field.

#### Trusted CA List:

The **Trusted CA List** allows you to configure which authentication servers you trust for the purpose of logging you in to the network. Click **Add** at the **Trusted CA List** at the bottom of the *Advanced Security Settings* page. Select the **Trusted CA** that you want to add and click **OK**.

