

DWL-8610AP

Version 1.0

**Dual-Band 802.11n/ac  
Unified Wireless Access Point**

 **Install Guide**

**Business Class Networking**

---

# Package Contents



DWL-8610AP



Power Adapter



Ethernet Cable



Console Cable



Mounting Plate



CD-ROM

**Note:** Using a power supply with a different voltage than the one included with the DWL-8610AP will cause damage and void the warranty for this product.

*If any of the above items are missing, please contact your reseller.*

## System Requirements

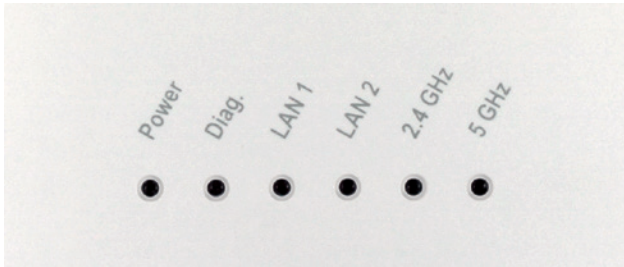
### Minimum System Requirements:

- CD-ROM Drive
- Computers with Windows®, Macintosh®, or Linux-based operating systems
- Installed Ethernet Adapter
- Internet Explorer version 6.0, Chrome 2.0, Safari 2.0, or Firefox 3.0 and above

---

# Hardware Overview

## LEDs



**Diag.** -The light will blink during boot up system auto-check. Once the access point is ready, the light will be off.

**5 GHz** - When lit, the access point is operating at 5GHz. This light will blink when there is wireless traffic.

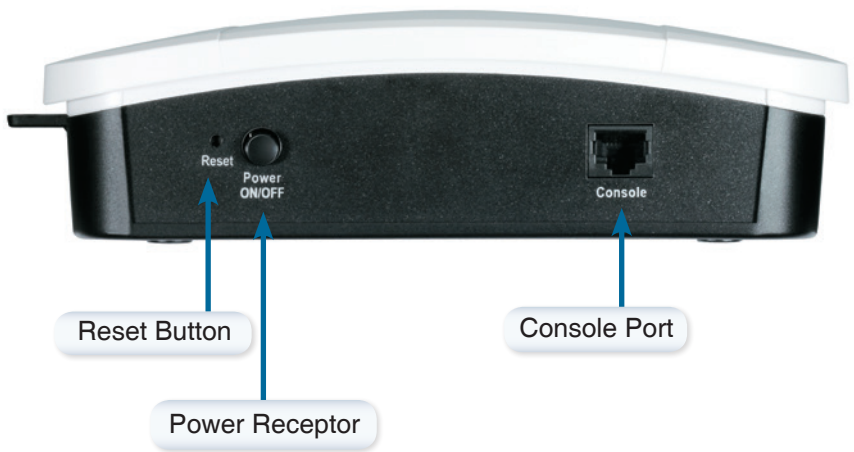
**2.4 GHz** - When lit, the access point is operating at 2.4GHz. This light will blink when there is wireless traffic.

**LAN1, LAN2** - Solid light when the Ethernet port is connected to a working port, such as a router or switch. The light will blink when there is traffic through LAN port.

**POWER** - The light will blink during boot up. Once solid, the access point is ready.

---

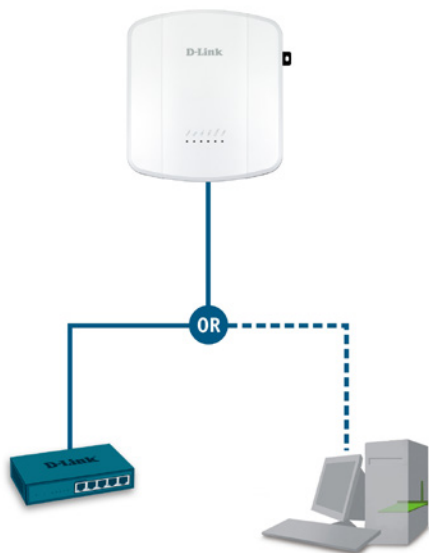
# Installing the Hardware



---

You may power the access point using one of the following methods.

1. Use the power adapter included in the package
2. Connect the access point to an external power-over-Ethernet (POE) switch



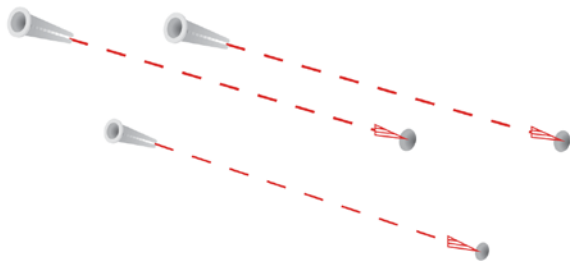
You may configure the access point using one of the following methods.

1. Directly connect the access point to a computer. You may then configure the access point through its graphical user interface (GUI)
2. Connect the access point to your computer using the included console cable. You may then configure the access point through its command line interface (CLI)

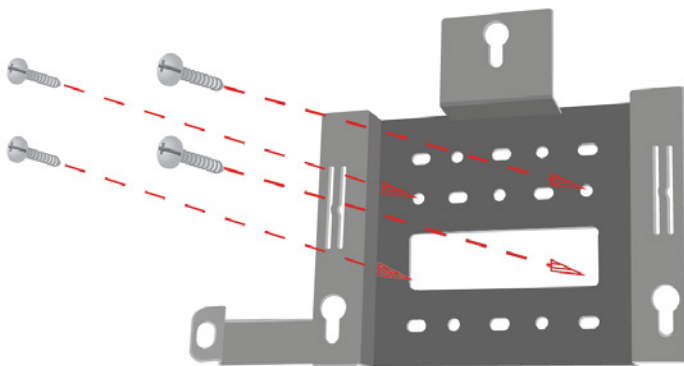
---

# Mounting Plate Assembly

**Step 1:** Insert the provided wall anchors in the wall where the mounting plate will be attached.



**Step 2:** Use the provided screws to secure the mounting plate on the wall.



---

**Step 3:** Attach the remaining screws securely to the back of the DWL-8610AP.

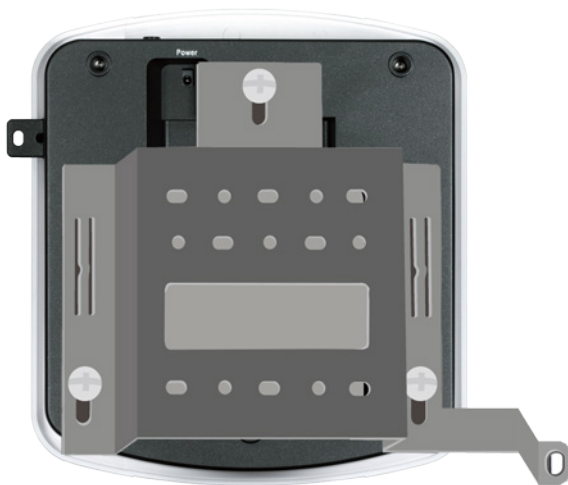


**Step 4:** Attach the DWL-8610AP to the mounting plate.



---

**Step 5:** Slide the DWL-8610AP down into the grooves on the mounting plate to secure it to the plate.



**Your Setup is Complete**



---

# Notes

---

# Notes

---

# Notes

# Technical Support

This guide is for first time configuration. Please refer to the user manual to learn more. U.S. and Canadian customers can contact D-Link Technical Support through our website.

## United States

<http://support.dlink.com>

## Canada

<http://support.dlink.ca>



Version 1.00(WW)  
November 26, 2013

Copyright ©2013 All rights reserved. D-Link and the D-Link logo are registered trademarks of D-Link Corporation or its subsidiaries. Other trademarks are the property of their respective owners. Maximum wireless signal rate derived from IEEE Standard 802.11g and 802.11n specifications. Actual data throughput will vary. Network conditions and environmental factors, including volume of network traffic, building materials and construction, and network overhead, lower actual data throughput rate. Environmental factors will adversely affect wireless signal range. Product specifications, size and shape are subject to change without notice, and actual product appearance may differ from that depicted on the packaging. Visit [dlink.com](http://dlink.com) (US) or [dlink.ca](http://dlink.ca) (Canada) for more details.