

DWL-8610AP
Version 1.0

**Dual-Band 802.11n/ac
Unified Wireless Access Point**

Install Guide

Business Class Networking

Package Contents



DWL-8600AP
802.11ac Power over
Ethernet (PoE) Access Point



Ethernet Cable



Console Cable



Mounting Plate



CD-ROM

Note: No PSU supplied. To power the units use an D-Link PoE switch or the D-Link DPE-101GI PoE injector.

If any of the above items are missing, please contact your reseller.

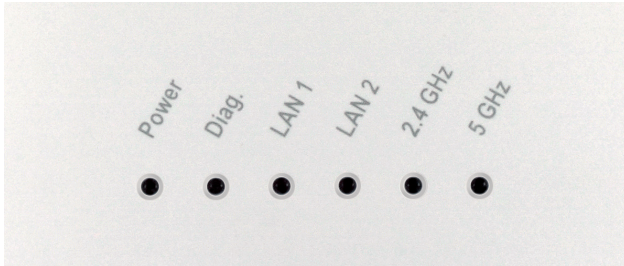
System Requirements

Minimum System Requirements:

- CD-ROM Drive
- Computers with Windows®, Macintosh®, or Linux-based operating systems
- Installed Ethernet Adapter
- Internet Explorer version 6.0, Chrome 2.0, Safari 2.0, or Firefox 3.0 and above

Hardware Overview

LEDs



Diag. -The light will blink during boot up system auto-check. Once the access point is ready, the light will be off.

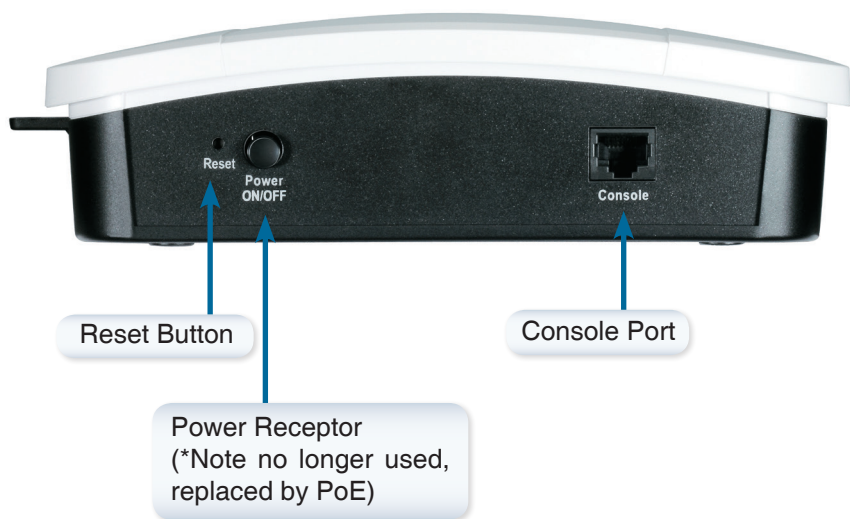
5 GHz - When lit, the access point is operating at 5GHz. This light will blink when there is wireless traffic.

2.4 GHz - When lit, the access point is operating at 2.4GHz. This light will blink when there is wireless traffic.

LAN1, LAN2 - Solid light when the Ethernet port is connected to a working port, such as a router or switch. The light will blink when there is traffic through LAN port.

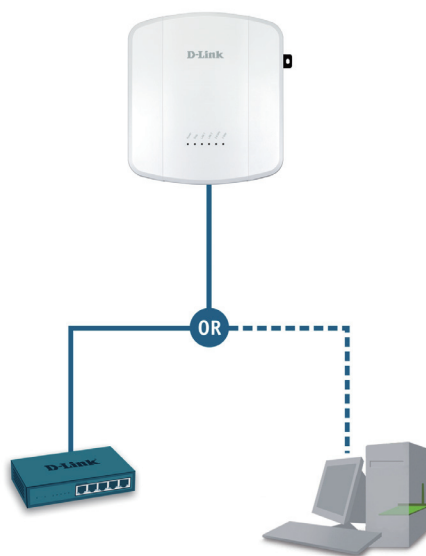
POWER - The light will blink during boot up. Once solid, the access point is ready.

Installing the Hardware



You may power the access point using one of the following methods.

1. Connect the access point to an external power-over-Ethernet (POE) switch
2. Purchase separately a DPE-101GI PoE injector if you need to connect the Access Point without a PoE Switch.

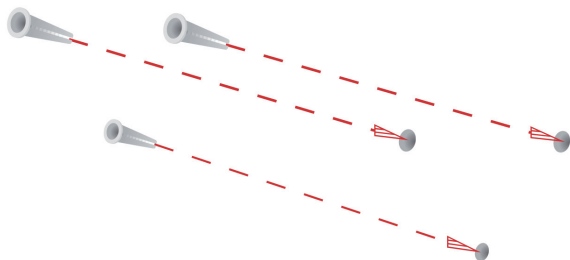


You may configure the access point using one of the following methods.

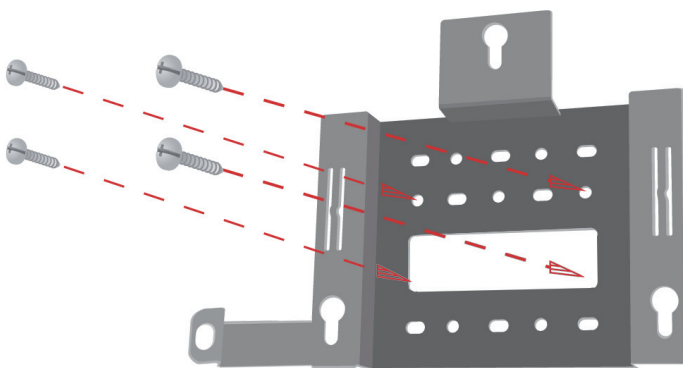
1. Directly connect the access point to a computer. You may then configure the access point through its graphical user interface (GUI)
2. Connect the access point to your computer using the included console cable. You may then configure the access point through its command line interface (CLI)

Mounting Plate Assembly

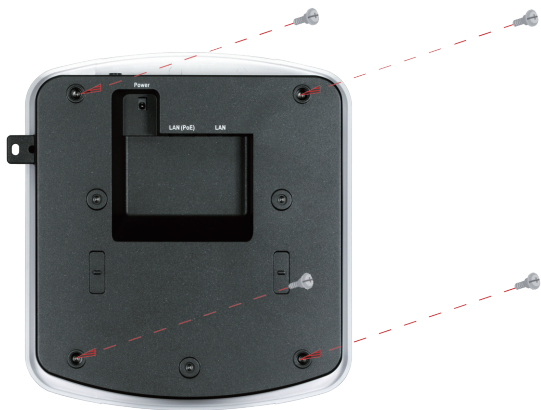
Step 1: Insert the provided wall anchors in the wall where the mounting plate will be attached.



Step 2: Use the provided screws to secure the mounting plate on the wall.



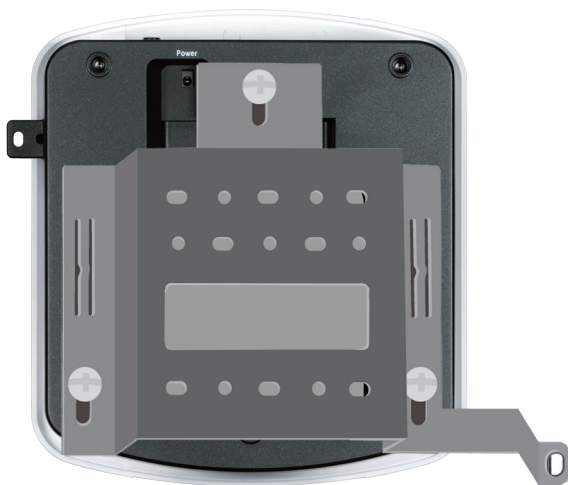
Step 3: Attach the remaining screws securely to the back of the DWL-8610AP.



Step 4: Attach the DWL-8610AP to the mounting plate.



Step 5: Slide the DWL-8610AP down into the grooves on the mounting plate to secure it to the plate.



Your Setup is Complete

Appendix C - Statements

Federal Communication Commission Interference Statement

This device complies with Part 15 of the FCC Rules. Operation is subject to the following two conditions: (1) This device may not cause harmful interference, and (2) this device must accept any interference received, including interference that may cause undesired operation.

This equipment has been tested and found to comply with the limits for a Class B digital device, pursuant to Part 15 of the FCC Rules. These limits are designed to provide reasonable protection against harmful interference in a residential installation. This equipment generates, uses and can radiate radio frequency energy and, if not installed and used in accordance with the instructions, may cause harmful interference to radio communications. However, there is no guarantee that interference will not occur in a particular installation. If this equipment does cause harmful interference to radio or television reception, which can be determined by turning the equipment off and on, the user is encouraged to try to correct the interference by one of the following measures:

-) Reorient or relocate the receiving antenna.
-) Increase the separation between the equipment and receiver.
-) Connect the equipment into an outlet on a circuit different from that to which the receiver is connected.
-) Consult the dealer or an experienced radio/TV technician for help.

FCC Caution: Any changes or modifications not expressly approved by the party responsible for compliance could void the user's authority to operate this equipment.

This device and its antennas(s) must not be co-located or operating in conjunction with any other antenna or transmitter except in accordance with FCC multi-transmitter product procedures.

For product available in the USA/Canada market, only channel 1~11 can be operated. Selection of other channels is not possible.

This device is going to be operated in 5.15~5.25GHz frequency range, it is restricted in indoor environment only.

Note: The country code selection is for non-US model only and is not available to all US model. Per FCC regulation, all WiFi product marketed in US must fixed to US operation channels only.

Radiation Exposure Statement:

This equipment complies with FCC radiation exposure limits set forth for an uncontrolled environment. This equipment should be installed and operated with minimum distance 20cm between the radiator & your body.

Industry Canada statement:

This device complies with Industry Canada license-exempt RSS standard(s). Operation is subject to the following two conditions: (1) This device may not cause harmful interference, and (2) this device must accept any interference received, including interference that may cause undesired operation.

Ce dispositif est conforme à la norme CNR d'Industrie Canada applicable aux appareils radio

exempts de licence. Son fonctionnement est sujet aux deux conditions suivantes: (1) le dispositif ne doit pas produire de brouillage préjudiciable, et (2) ce dispositif doit accepter tout brouillage reçu, y compris un brouillage susceptible de provoquer un fonctionnement indésirable.

For product available in the USA/Canada market, only channel 1~11 can be operated. Selection of other channels is not possible.

Pour les produits disponibles aux États-Unis / Canada du marché, seul le canal 1 à 11 peuvent être exploités. Sélection d'autres canaux n'est pas possible.

This device and it's antennas(s) must not be co-located or operating in conjunction with any other antenna or transmitter except in accordance with IC multi-transmitter product procedures. Cet appareil et son antenne (s) ne doit pas être co-localisés ou fonctionner en association avec une autre antenne ou transmetteur.

for the band 5150-5250 MHz is only for indoor usage to reduce potential for harmful interference to co-channel mobile satellite systems.

les dispositifs fonctionnant dans la bande 5150-5250 MHz sont réservés uniquement pour une utilisation à l'intérieur afin de réduire les risques de brouillage préjudiciable aux systèmes de satellites mobiles utilisant les mêmes canaux.

Radiation Exposure Statement:

This equipment complies with IC radiation exposure limits set forth for an uncontrolled environment. This equipment should be installed and operated with minimum distance 20cm between the radiator & your body.

Declaration d'exposition aux radiations: Cet équipement est conforme aux limites d'exposition aux rayonnements IC établies pour un environnement non contrôlé. Cet équipement doit être installé et utilisé avec un minimum de 20 cm de distance entre la source de rayonnement et votre corps.

CE Mark Warning:

This is a Class B product. In a domestic environment, this product may cause radio interference, in which case the user may be required to take adequate measures.

NCC Statement:

經型式認證合格之低功率射頻電機，非經許可，公司、商號或使用者均不得擅自變更頻率、加大功率或變更原設計之特性及功能。

低功率射頻電機之使用不得影響飛航安全及干擾合法通信；經發現有干擾現象時，應改善至無干擾時方得繼續使用。前項合法通信，指依電信法規定作業之無線電通信。低功率射頻電機須忍受合法通信或工業、科學及醫療用電波輻射性電機設備之干擾。

DWL-8610AP

Power Usage

This device is an Energy Related Product (ErP) with High Network Availability (HINA), and automatically switches to a power-saving Network Standby mode within 1 minute of no packets being transmitted. If it is not needed during certain periods of time, it can be unplugged to save energy.

Network Standby: 12.94W watts

