

D-Link Quick Installation Guide

This product can be set up using any current web browser, i.e., Internet Explorer 6 or Netscape Navigator 6.2.3.

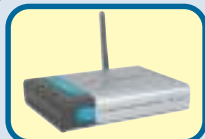


DWL-700AP
D-Link Air™
Wireless Access Point

Before You Begin

It's best to use a computer (with an Ethernet adapter) that is connected to a switch for configuring the DWL-700AP. The default IP address for the DWL-700AP is **192.168.0.50** with a Subnet Mask of **255.255.255.0**. You will need to assign your computer a Static IP address within the same range as the DWL-700AP's IP address for the purpose of configuring the DWL-700AP. **See the Manual on the CD-ROM if you need assistance in assigning a Static IP address for your network adapter.**

Check Your Package Contents



DWL-700AP Wireless Access Point



CD-ROM (containing Manual and Warranty)



Ethernet (CAT5 UTP) Cable



5V 2A DC Power Adapter



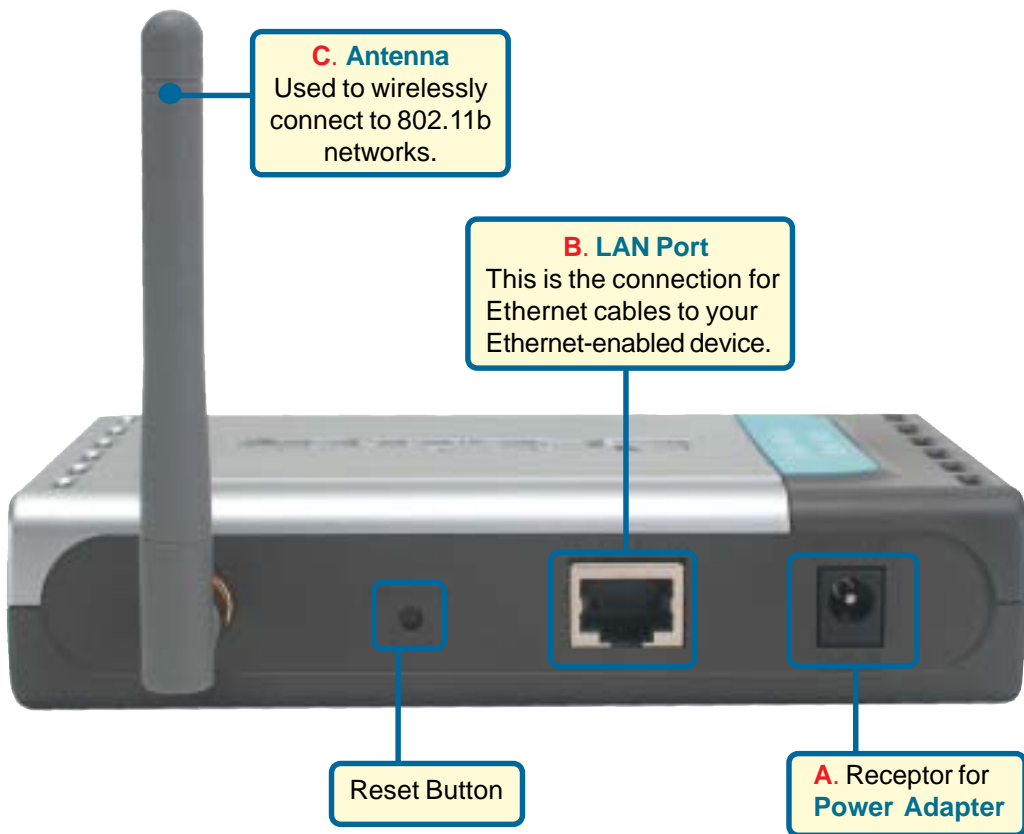
Using a power supply with a different voltage rating will damage and void the warranty of this product.

If any of the above items are missing, please contact your reseller.

1

Connecting The DWL-700AP Wireless Access Point To Your Network

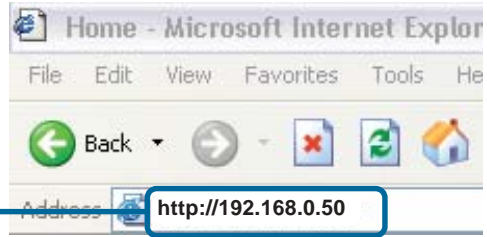
- A.** First, connect the power adapter to the **receptor** at the back panel of the DWL-700AP and then plug the other end of the power adapter to a wall outlet or power strip. The Power LED will turn **ON** to indicate proper operation.
- B.** Using an Ethernet cable, insert one end of the cable to the **LAN port** on the back panel of the DWL-700AP and the other end of the cable to a switch.
Note: You also have the option of connecting the DWL-700AP directly to the computer that will be used for configuration. The Link LED light will illuminate to indicate a proper Ethernet connection.
- C.** Computers with 802.11b wireless adapters such as the DWL-650 *Air* Wireless Cardbus Adapter and the DWL-520 *Air* Wireless PCI Adapter can connect to the DWL-700AP. By default, the DWL-700AP SSID is set to 'default' with a Channel setting of '6'.



2

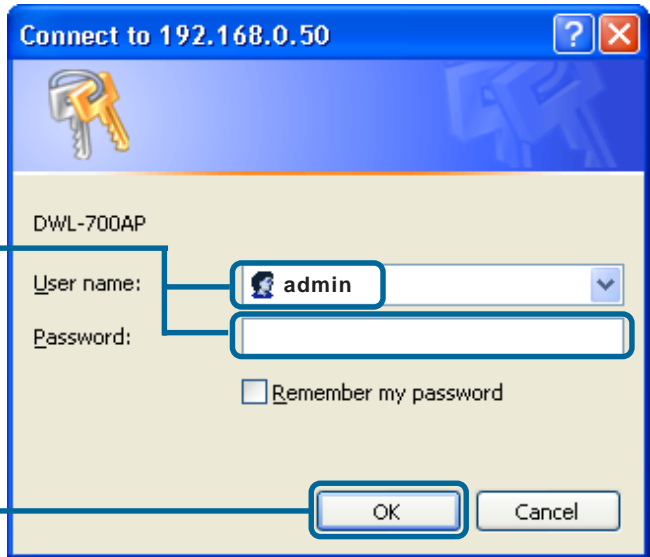
Using The Setup Wizard

Open your **Web browser** and type **“http://192.168.0.50”** into the URL address box. Then press the **Enter** or **Return** key.



The login pop-up screen will appear.

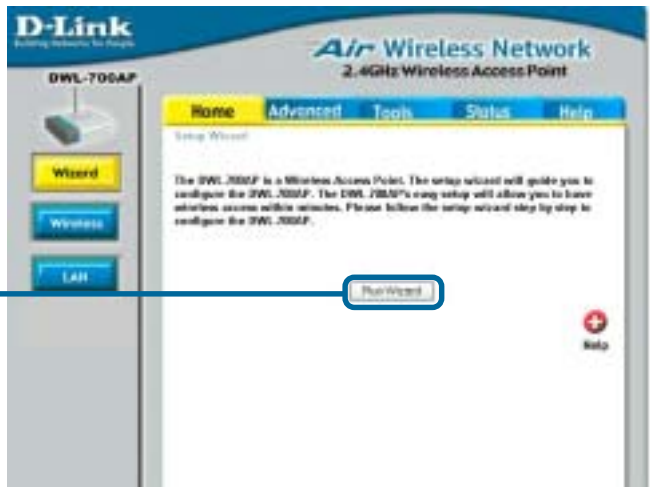
Type **“admin”** for the username and leave the password field blank.



Click **OK**

Once you have logged in, the **Home** screen will appear.

Click **Run Wizard**



2

Using The Setup Wizard (continued)

You will see the following screens.



Click **Next**

Step 1 - Set up your new password. You have the option to establish a password.



Click **Next**

Step 2 - Set Wireless LAN Connection
By default the DWL-700AP SSID is set to 'default' with a Channel setting of '6'.



Click **Next**

2

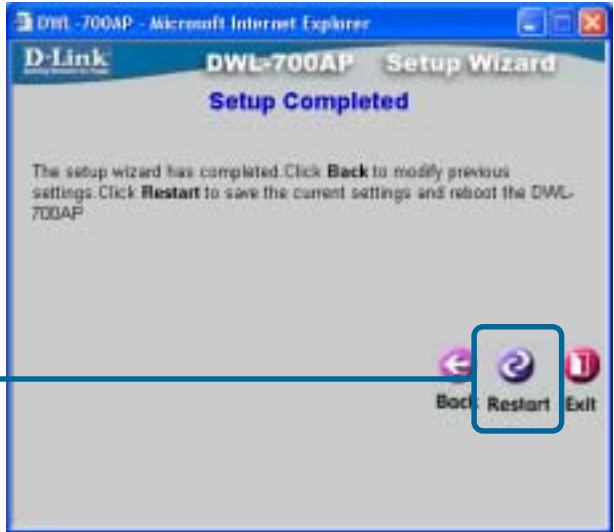
Using The Setup Wizard (continued)

Step 3 - Encryption

The DWL-700AP is capable of two levels of wireless encryption - 64-bit, and 128-bit. **By default encryption is disabled.** You can change the encryption settings for more secure wireless communication.



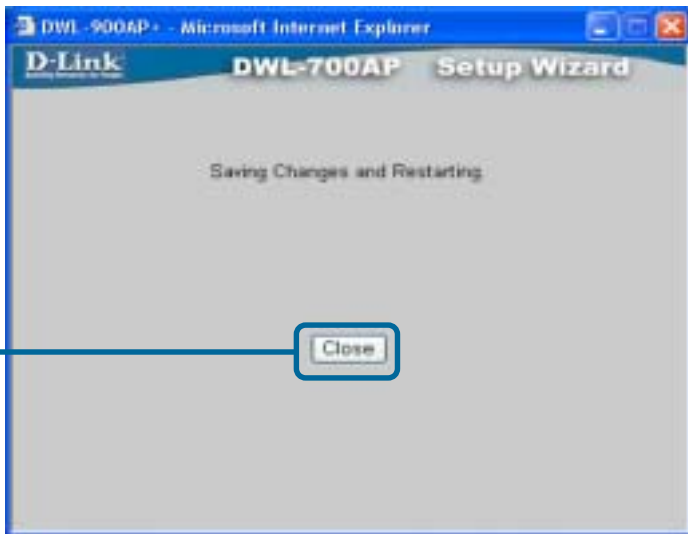
Click **Next**



Click **Restart**

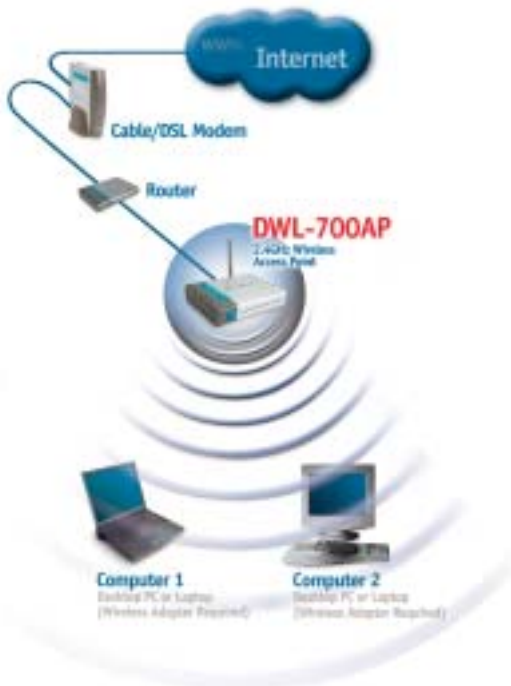
3

Your Setup is Complete!



You will be returned to the **Home** tab. Please close all internet browser windows.


When you have completed the steps in this **Quick Installation Guide**, your connected network should look similar to this:



4

Connecting to the DWL-700AP

Using the *Air* Wireless Utility included with the *Air* Adapters, you can browse and connect to the DWL-700AP.

 The MAC address of the DWL-700AP is listed on the product sticker on the bottom of the unit.



The Link Info page of the *Air* utility will show the connection status between the DWL-700AP and *Air* wireless adapter.



Technical Support

You can find software updates and user documentation on the D-Link website.

D-Link provides free technical support for customers within the United States and within Canada for the duration of the warranty period on this product.

U.S. and Canadian customers can contact D-Link technical support through our website, or by phone.

Tech Support for customers within the United States:

D-Link Technical Support over the Telephone:

(877) 453-5465

24 hours a day, seven days a week.

D-Link Technical Support over the Internet:

<http://support.dlink.com>

[email:support@dlink.com](mailto:support@dlink.com)

Tech Support for customers within Canada:

D-Link Technical Support over the Telephone:

(800) 361-5265

Monday to Friday 8:30am to 9:00pm EST

D-Link Technical Support over the Internet:

<http://support.dlink.ca>

[email:support@dlink.ca](mailto:support@dlink.ca)

