

Quick Installation Guide for DWL-122 (Aug 2004)

DWL-122 is D-Link 802.11b 11Mbps USB Wireless Adapter, which support Mac OS X (version 10.2x or later) & USB specification 1.1.



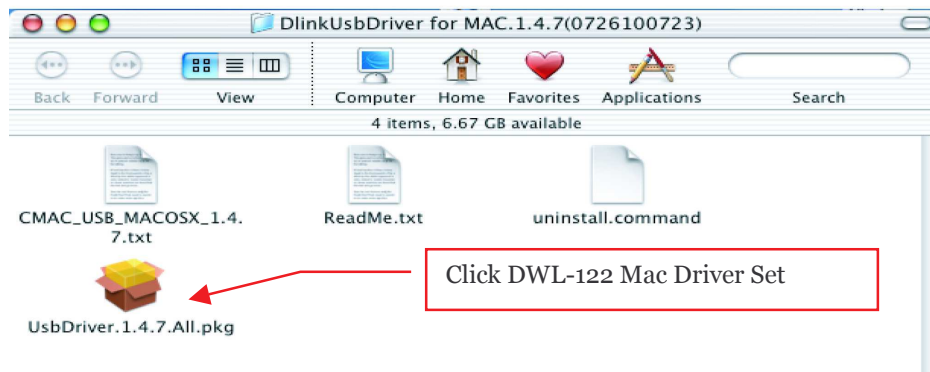
Figure 1 – Apple eMac & D-Link DWL-122

1. Insert DWL-122 driver CD-ROM into the CD-ROM drive. The following four (4) files are found. Click the file, `UsbDriver.1.4.7.All.pkg` to start the driver installation.

NOTE:

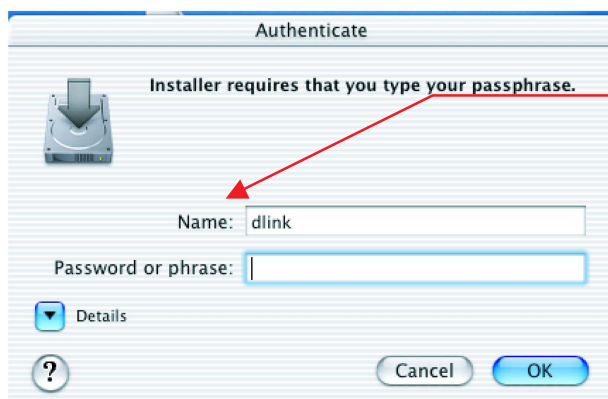
:- Do NOT insert DWL-122 into eMac until the completion of driver.

Step 1: Click on `UsbDriver.1.4.7.All.pkg`



2. After running the DWL-122 driver set, you are prompt to login to your Mac computer to install the driver. Enter the correct [Name] & [Password] & then click [OK].

Step 2: Click "OK"

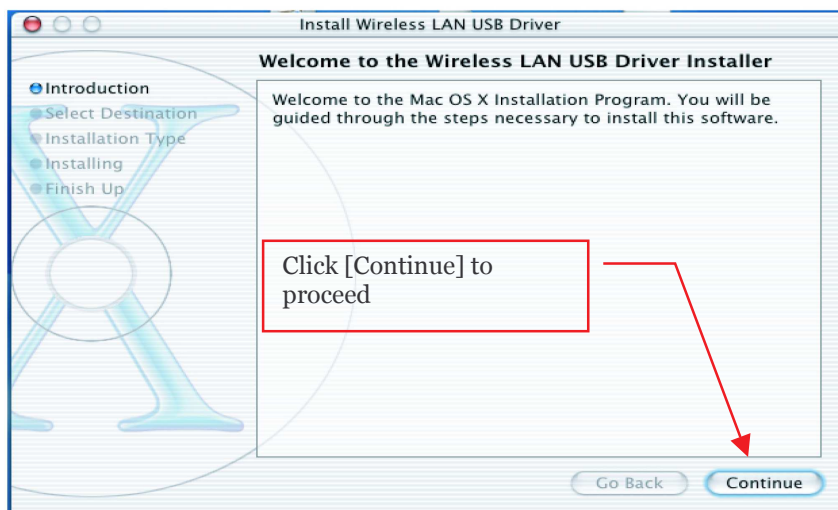


[Name] & [Password or phrase] are required to login to your local Mac user account.

NOTE: [dlink] in this diagram is an example for quick reference.

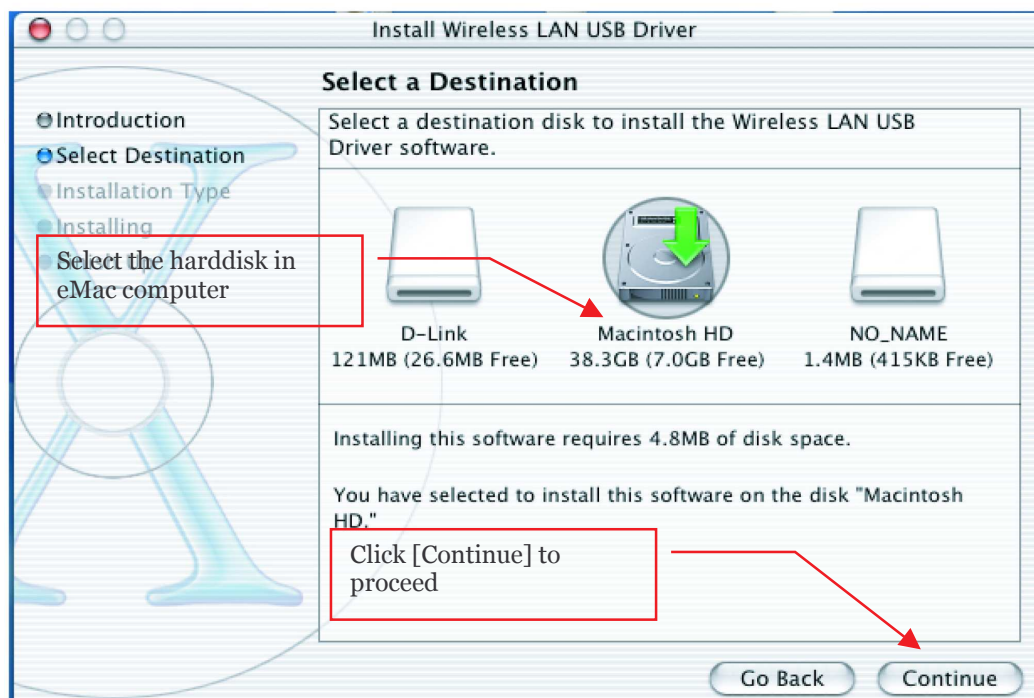
3. [Install Wireless LAN USB Driver] menu is displayed. Click [Continue] to continue.

Step 3: Click on "Continue"



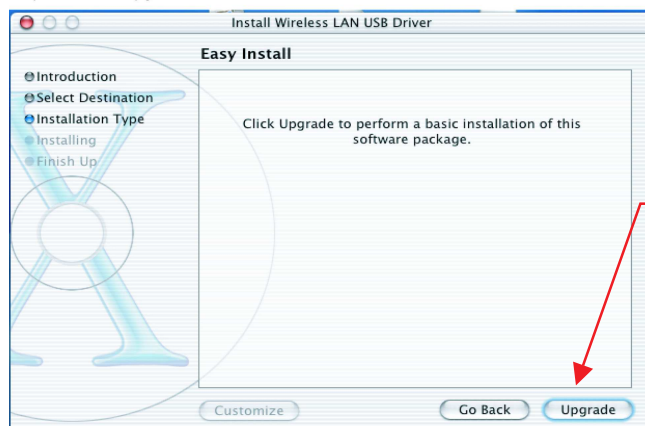
4. Select the disk where DWL-122 driver set is installed & click [Continue] to proceed.

Step 4: Select a Destination and Click "Continue"



5. [Install Wireless LAN USB Driver] menu is displayed. Click [Upgrade] to proceed

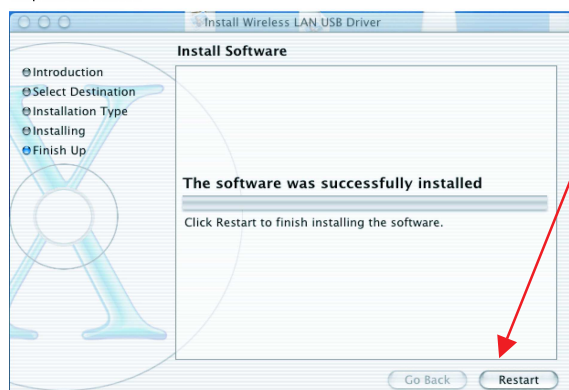
Step 5: Click on "Upgrade"



Click [Upgrade] to proceed

6. Once the installation of driver is completed, click [Restart] to reset the eMac.

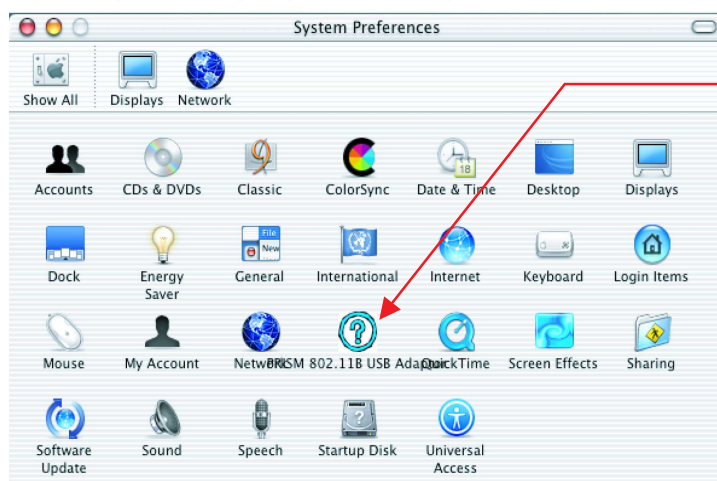
Step 6: Click "Restart"



Click [Restart] to proceed

7. **Insert DWL-122 into eMac** & open "System Preferences" in Mac OS X.

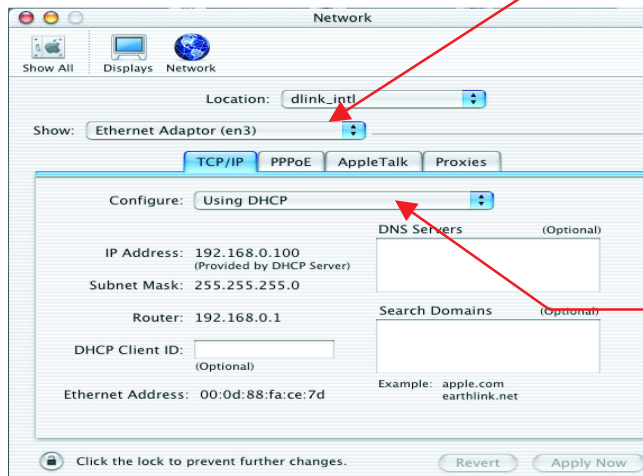
Step 7: After system restart, open "System Preferences". you can see "Prism 802.11b adaptor"



"Prism 802.11b adaptor" icon is found & DWL-122 driver is installed successfully

8. In [System Preferences] folder, click [Network] icon

Step 8: At "System Preferences" Click "Network"

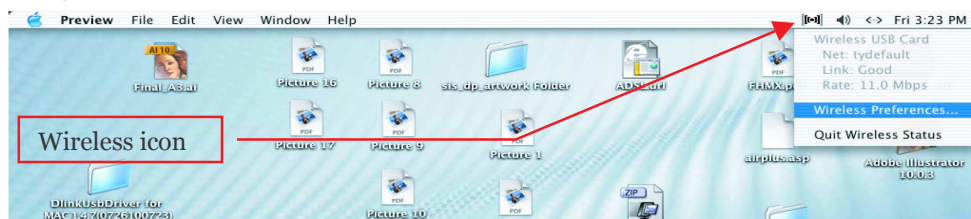


Select the right logical wireless adapter in Mac OS X.

Configure protocol properly. In this example, TCP/IP is selected & DHCP client is chosen

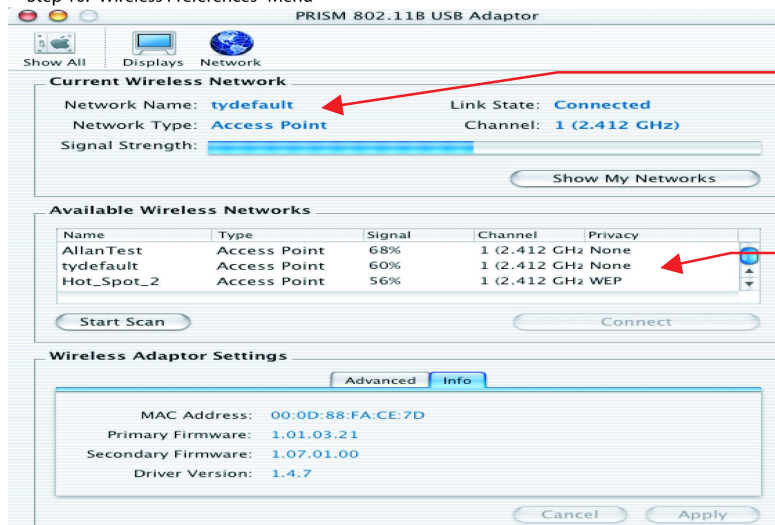
9. Click on wireless icon [((.))] & select [Wireless Preferences]

Step 9: Click on "Wireless Preferences"



10. You can start site survey to identify the wireless access points in the nearby area.

Step 10: "Wireless Preferences" Menu



Information of connected access point

List of available access points

For any assistance, kindly access www.dlink.in.th or email us support@dlink.com.sg.

D-Link International Pte Ltd

Office: (65) 6774-6233

Fax: (65) 6774-6322