

Product Highlights

Reliable, Secure Network

Self-healing and self-optimising technology combined with 4+4 wireless controller redundancy and RF scanning ensures reliability and performance.

Easy Guest Management

Features such as account generation, ticket issuance, user monitoring and session extension simplifies guest wireless network management.

Scalable Network Architecture

To meet evolving network demands, access point management can be upgraded from 64 to 256 APs per controller.



DWC-2000

Wireless Controller

Features

Network Architecture

- Manage up to 64 wireless APs; upgradable to 256 APs¹ per controller
- Control up to 256 wireless APs; maximum 1024 APs¹ per cluster

Robust Network Security

- Wireless Intrusion Detection System (WIDS)
- Rogue AP Detection & Classification
- Captive Portal
- WEP, WPA Personal/ Enterprise, WPA2 Personal/ Enterprise
- 802.1x

Fault Tolerance

- Max. 4+4 Redundancy
- RF Self-healing

Guest Management

- Ticket generation
- Payment gateway
- Account monitoring and extension

Compatible D-Link Wireless Access Points

- DWL-8610AP (indoor, 802.11 ac)
- DWL-8600AP (indoor, 802.11 a/b/g/n)
- DWL-6700AP (outdoor, 802.11 a/b/g/n)
- DWL-6600AP (indoor, 802.11 a/b/g/n)
- DWL-3600AP (indoor, 802.11 b/g/n)
- DWL-2600AP (indoor, 802.11 b/g/n)

The D-Link DWC-2000 Wireless Controller is a centralised Wireless LAN manager designed specifically for education, hospitality and medium-to-large enterprises. With the ability to manage up to 64 (upgradable to 256) wireless access points and up to a maximum of 1,024 wireless access points¹ in a controller cluster, the DWC-2000 is a cost-effective mobility solution suitable for medium to large scale deployments. Features such as auto-managed AP discovery and single-point management allow users to achieve enterprise class networking without the burden of executing massive and complex configurations. The guest account generation function manages guest users' bandwidth and accessibility to network resources. The DWC-2000 blocks potential attacks from unauthorised users and appliances with its robust and comprehensive security detection system, which is crucial in wireless environments.

Simplified Deployment and Management

Using the Setup Wizard, the DWC-2000 can be configured for any network in minutes. Centralised management of remote access points via a simple interface provides the ability to automatically discover compatible D-Link Wireless Access Points, add them into the managed access point list, and set one-time configuration dispatch settings for them. The network administrator can use the controller clustering feature to easily log into one wireless controller and push essential configurations to others within the group.

The dashboard displays real-time monitoring of access points and associated client stations allows network resources to be efficiently managed. Furthermore, the graphical widgets on the dashboard can be customised to provide various clients and network statistics at a glance. Combined with system alarms and statistical reports on managed access points, the DWC-2000 is the one-stop platform that allows administrators to effectively optimise and manage their network environment.

Guest Control and Management

The DWC-2000 integrates guest management features that deliver a secure and easy solution for managing access to the Internet by temporary users in a private or public network. Each temporary account, or the issued wireless access ticket, is accompanied by either time-limited or volume-limited Internet access privileges. The Guest Management service allows batch generation of temporary accounts, and also provides account details to the guest via printout. Furthermore, it can monitor or extend the usage on the specific account manually after account creation and activation. Guests can easily purchase the service online by connecting with payment gateways to authorised credit card or electronic payments.

Robust and Optimised Network

The DWC-2000 offers self-organising, self-optimising and self-healing network capabilities to increase the stability of the entire wireless network. Maximum 4+4 wireless controller redundancy and AP provisioning automatically switches the AP management from the failed controller to the backup in emergency scenarios, giving your network the reliability it needs. Featuring regular radio scanning and performance analysis, the DWC-2000 can automatically tune radio channels and power. This reduces interference and keeps the wireless network optimised. To make up for a sudden RF signal vacuum created by a "dead" access point, the DWC-2000 increases the transmission output power of neighbouring access points to expand RF coverage for a reliable, high performance network.

Comprehensive Security

The DWC-2000 provides a comprehensive wireless security solution for easy integration into any network. The Wireless Intrusion Detection System (WIDS) featured in the DWC-2000 detects rogue access points, rogue clients, and can anticipate wireless threats therefore preventing potential breaches and illegal access before any damage is done to the network. In addition to fundamental wireless security, the Captive Portal feature allows you to block clients from accessing the network until their identities are verified. The Captive Portal authentication servers cover local, RADIUS, LDAP, POP3 and Window Active Directory. This double-layer authentication and authorisation establish a robust security fence to avoid attacks from internal networks.

High Scalability, Availability, and Flexibility

To address today's fast-changing corporate structures, the DWC-2000 Wireless Controller offers flexible range of optional features: the administrator can purchase D-Link's Business Wireless Plus license packs to upgrade the DWC-2000's capabilities. D-Link offers a range of DWC-2000 managed AP license pack upgrades to increase the number of manageable access points, depending on need. By default, the DWC-2000 manages up to 64 access points, but this can be expanded to 256 access points per controller. With the DWC-2000, as business grows, so does its wireless network.



If the worst should happen to your network you need the very best support and fast. Downtime costs your business money. D-Link Assist maximises your uptime by solving technical problems quickly and effectively. Our highly trained technicians are on standby around the clock, ensuring that award-winning support is only a phone call away.

With a choice of three affordable service offerings covering all D-Link business products, you can select the package that suits you best:

D-Link Assist Gold - for comprehensive 24-hour support

D-Link Assist Gold is perfect for mission-critical environments where maximum uptime is a high priority. It guarantees four hour around-the-clock response. Cover applies 24/7 for every day of the year including holidays.

D-Link Assist Silver - for prompt same-day assistance

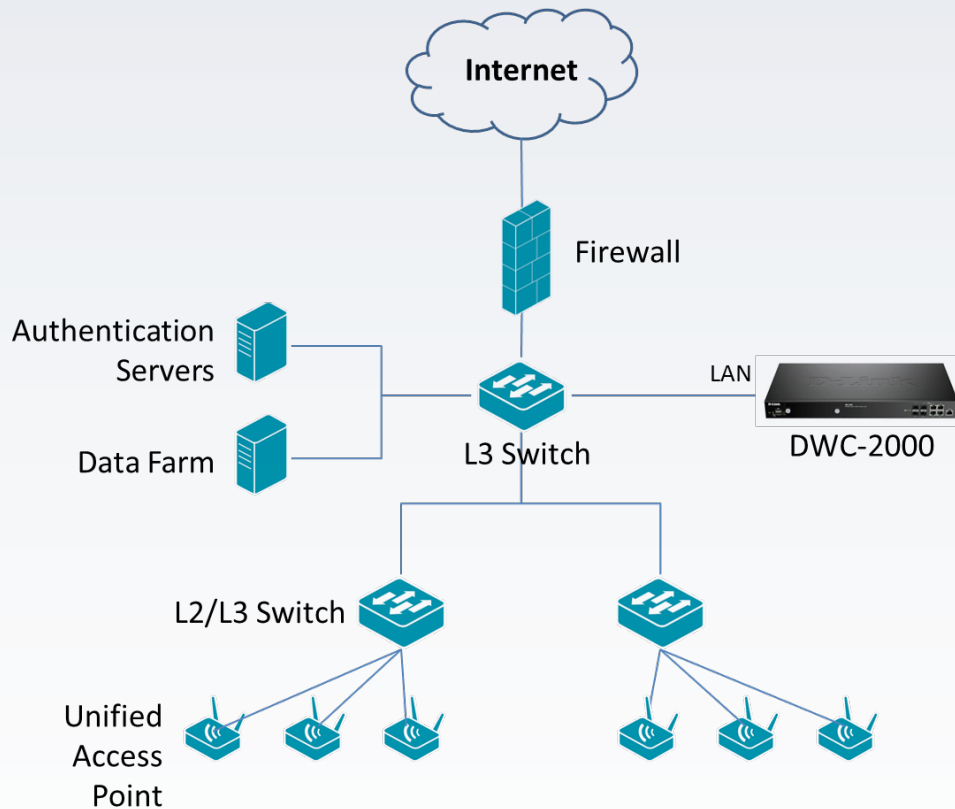
D-Link Assist Silver is designed for 'high availability' businesses that require rapid response within regular working hours. It provides a four hour response service Monday to Friday from 8am to 5pm, excluding holidays.

D-Link Assist Bronze - for guaranteed response on the next business day

D-Link Assist Bronze is a highly cost-effective support solution for less critical environments. Response is guaranteed within eight business hours Monday to Friday from 8am to 5pm, excluding holidays.

D-Link Assist can be purchased together with any D-Link business product. So whether you're buying switching, wireless, storage, security or IP Surveillance equipment from D-Link, your peace of mind is guaranteed. D-Link Assist also offers installation and configuration services to get your new hardware working quickly and correctly.

Network Implementation within L2/L3 Network in Medium to Large Environments



Technical Specifications

Interface

Ports	• 4 10/100/1000 RJ-45 and 4 100/1000 SFP Combo ports
USB	• 2 USB 2.0 ports
Console Port	• 1 RJ-45
Extension Slot	• 1 Hard disk driver slot

Performance

Maximum Access Points per Unit	• 64/ 256 ¹ (default/ upgrade)
Maximum Access Points per Cluster	• 256/ 1024 ¹ (default/ upgrade)
Concurrent Captive Portal Authentication Users	• 3072

Access Point Management

Model of Managed APs	<ul style="list-style-type: none"> • DWL-8610AP • DWL-8600AP • DWL-6700AP 	<ul style="list-style-type: none"> • DWL-6600AP • DWL-3600AP • DWL-2600AP
AP Discovery & Control	• Layer-2	• Layer-3
AP Monitoring	<ul style="list-style-type: none"> • Managed AP • Rogue AP 	<ul style="list-style-type: none"> • Authentication Fail AP • Standalone AP
Client Monitoring	<ul style="list-style-type: none"> • Authenticated Client • Rogue Client 	<ul style="list-style-type: none"> • Authentication Fail Client • Ad-hoc Client
Centralised RF/ Security Policy Management	• Supported	

Roaming	
Fast Roaming	• Supported
Intra-controller/ Inter-controller Roaming	• Supported
Intra-subnet/ Inter-subnet Roaming	• Supported
Security	
Wireless Security	<ul style="list-style-type: none"> • WEP • Dynamic WEP • WPA Personal/Enterprise • WPA2 Personal/Enterprise
Wireless Intrusion Detection & Prevention System (WIDS)	<ul style="list-style-type: none"> • Rogue and Valid AP Classification • Rogue AP Mitigation
LAN Security	• 802.1x port-based access control and guest VLAN
Authentication	<ul style="list-style-type: none"> • Captive Portal • MAC Authentication
VLAN	
VLAN Group	• Up to 255 entries
802.1q VLAN Tagging	• Supported
Subnet-based VLAN	• Supported
Port-based VLAN	• Supported
User Account Management	
Permanent Account Authentication Method	<ul style="list-style-type: none"> • Local Database • External RADIUS • External LDAP • External POP3 • External Windows Active Directory (wired only)
Temporary Account Authentication Method	• Local Database
Temporary Account Creation	• Single or batch account generation by system with customised active or usage expired time
Payment Gateway	<ul style="list-style-type: none"> • Authorize.net • Paypal • SecurePay • World Pay
System Management	
Web-based User Interface	• HTTP
Command Line	• Supported
SNMP	• v1, v2c, v3
Physical/Environmental	
Power Supply	• 100-240 V AC, 50-60 Hz Internal power supply
Max. Power Consumption	• 26.95 W
Dimensions	• 440 x 310 x 44 mm (17.3 x 12.2 x 1.73 inches)
Operating Temperature	• 0 to 40 °C (32 to 104 °F)
Storage Temperature	• -20 to 70 °C (-4 to 158 °F)
Operating Humidity	• 5% to 95%, Non-condensing
Emission (EMI)	• FCC Class A, CE Class A, C-Tick, IC
Safety	• cUL, LVD (EN60950-1)

Compatible D-Link Wireless Access Points	
DWL-8610AP	Unified Wireless AC1750 Simultaneous Dual-Band PoE Access Point
DWL-8600AP	Unified Wireless N Simultaneous Dual-Band PoE Access Point
DWL-6700AP	Unified Wireless N Simultaneous Dual-Band PoE Outdoor Access Point
DWL-6600AP	Unified Wireless N Simultaneous Dual-Band PoE Access Point
DWL-3600AP	Unified Wireless N PoE Access Point
DWL-2600AP	Unified Wireless N PoE Access Point
Compatible D-Link Business Wireless Plus License	
DWC-2000-AP32/DWC-2000-AP32-LIC	Enable management of 32 additional APs
DWC-2000-AP64/DWC-2000-AP64-LIC	Enable management of 64 additional APs
DWC-2000-AP128/DWC-2000-AP128-LIC	Enable management of 128 additional APs

¹ The number of additional APs available for management depends on your license type.



For more information: www.dlink.com

D-Link European Headquarters. D-Link (Europe) Ltd., D-Link House, Abbey Road, Park Royal, London, NW10 7BX.
Specifications are subject to change without notice. D-Link is a registered trademark of D-Link Corporation and its overseas subsidiaries.
All other trademarks belong to their respective owners. ©2015 D-Link Corporation. All rights reserved. E&OE.

Updated May 2015