

**Subject:** How to use wireshark to remote capture the packet from AP

**Model:** DWL-2600AP , DWL-3600AP , DWL-6600AP , DWL-8600AP , DWL-8610AP

**Firmware:** latest 4.2.0.x and newer

*Remote capturing is using the wireshark capture the packet directly from AP.*

*The benefit of it would be we can ignore the limit of the AP buffer.*

**For DWS-x600AP Radio 1 = 5 GHz & Radio 2 = 2,4 GHz.**

**For DWS-8610AP Radio 1 = 2,4 GHz & Radio 2 = 5 GHz.**

1. telnet to the AP and enable remote capture

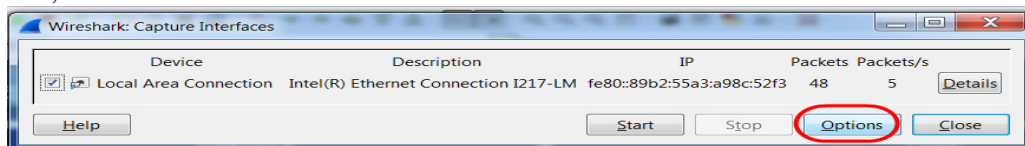
“ set packet-capture start-remote-capture up “

“ set packet-capture start-remote-capture down ”

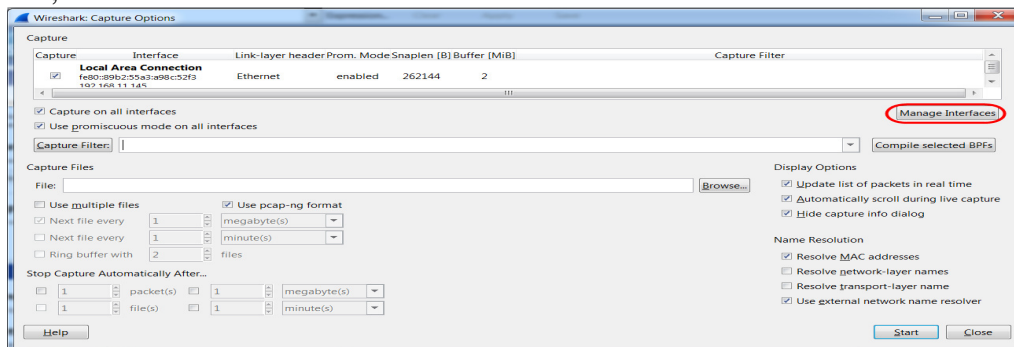
```
DLINK-WLAN-AP# set packet-capture start-remote-capture up
DLINK-WLAN-AP# get packet-capture
Property                               Value
-----
capture-beacons                        up
wireless-client-filter-mac            00:00:00:00:00:00
wireless-client-filter-mode           down
wireless-promiscuous-mode             down
file-capture-interface                radio1
file-capture-duration                  3600
file-capture-max-size                  4096
remote-capture-ip-port                 2002
packet-capture-status                  Remote Capture In Progress
packet-capture-time                    01:32:27
capture-file-size                       0
available-interfaces                  brtrunk:eth0:wlan0:wlan1:radio1:radio2
```

2. Setup Remote interface on wireshark.

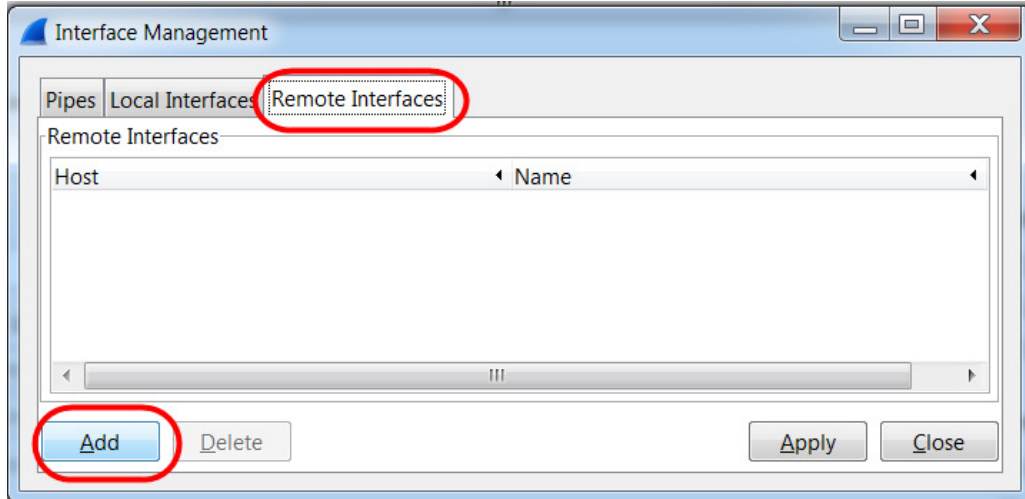
2-1,



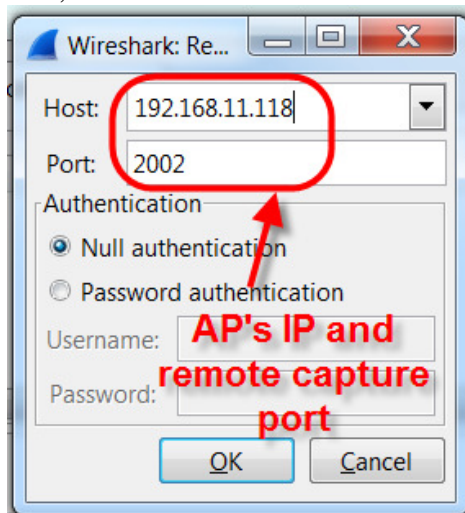
2-2,



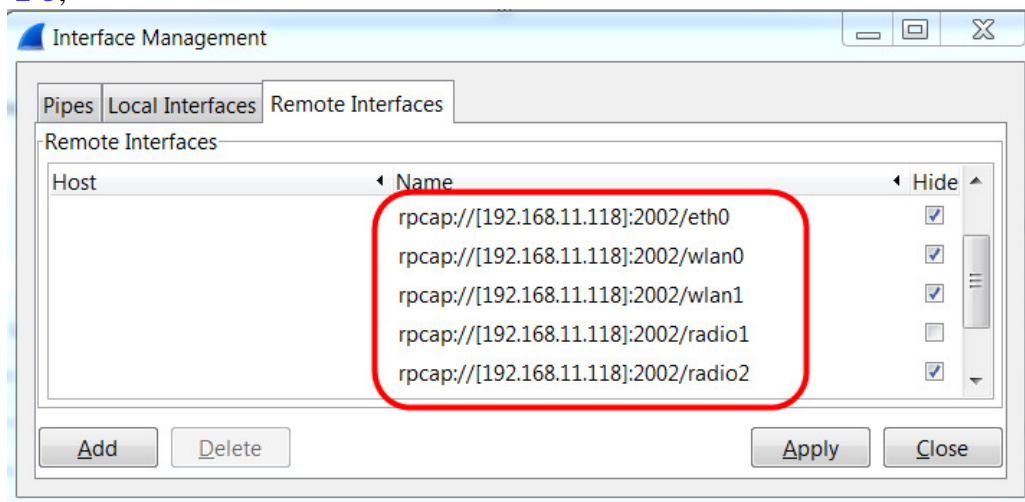
2-3,



2-4,



2-5,



2-6,

**Wireshark: Capture Options**

Capture	Interface	Link-layer header	Prom. Mode	Snaptlen (B)	Buffer (MiB)	Capture Filter
<input type="checkbox"/>	rpcap://(192.168.11.118):2002/brtrunk	Ethernet	enabled	262144	2	
<input type="checkbox"/>	rpcap://(192.168.11.118):2002/eth0	Ethernet	enabled	262144	2	
<input type="checkbox"/>	rpcap://(192.168.11.118):2002/wlan0	Ethernet	enabled	262144	2	
<input checked="" type="checkbox"/>	rpcap://(192.168.11.118):2002/radio1	802.11 plus radiotap header	enabled	262144	2	
<input type="checkbox"/>	rpcap://(192.168.11.118):2002/radio2	802.11 plus radiotap header	enabled	262144	2	
<input type="checkbox"/>	rpcap://(192.168.11.118):2002/any	Linux cooked	enabled	262144	2	
<input type="checkbox"/>	rpcap://(192.168.11.118):2002/lo (loopba...	Ethernet	enabled	262144	2	

**Choose the interface you want to captured**

Capture on all interfaces  
 Use promiscuous mode on all interfaces

Capture Filter:  Compile selected BPFs

File:  Browse...

Use multiple files  Use pcap-ng format  
 Next file every 1 megabyte(s)  
 Next file every 1 minute(s)  
 Ring buffer with 2 files

Stop Capture Automatically After...  
 1 packet(s)  1 megabyte(s)  
 1 file(s)  1 minute(s)

Display Options  
 Update list of packets in real time  
 Automatically scroll during live capture  
 Hide capture info dialog

Name Resolution  
 Resolve MAC addresses  
 Resolve network-layer names  
 Resolve transport-layer name  
 Use external network name resolver

Help Start Close