

# User Manual

## Wireless N 150 Desktop PCI Adapter

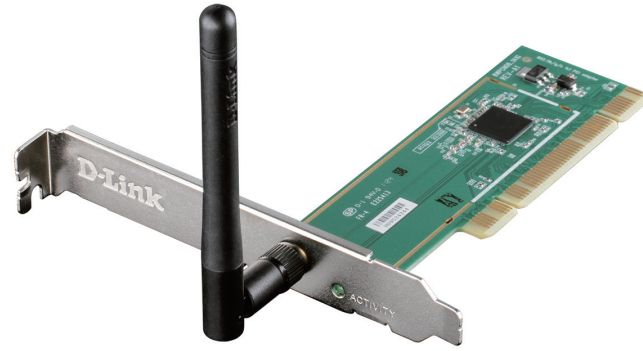
DWA-525

# Table of Contents

<b>Product Overview.....</b>	<b>3</b>	<b>Wireless Security .....</b>	<b>29</b>
Package Contents.....	3	What is WPA™ ? .....	29
System Requirements .....	3	Configure WPA™ /WPA2™ - Personal .....	30
Introduction .....	4	Using the D-Link Utility .....	30
Features.....	5	Using Windows® 7 .....	32
Hardware Overview .....	6	Using Windows Vista® .....	35
LEDs.....	6	Using Windows® XP .....	37
<b>Installation .....</b>	<b>7</b>	Configure WPA™ /WPA2™ -Enterprise .....	39
Getting Started.....	7	Using the D-Link Utility .....	39
Remove Existing Installations .....	7	<b>Troubleshooting .....</b>	<b>40</b>
Disable Other Wireless Adapters.....	8	Windows® 7 Troubleshooting .....	45
Wireless Installation Considerations.....	10	<b>Wireless Basics .....</b>	<b>47</b>
Software/Driver Installation .....	11	<b>Networking Basics .....</b>	<b>51</b>
<b>Configuration.....</b>	<b>17</b>	Check your IP address.....	51
D-Link Wireless Connection Manager.....	17	Windows® XP/2000 Users .....	51
Wireless Networks .....	18	Windows® 7/Windows Vista® Users.....	51
My Wireless Networks .....	19	Statically Assign an IP address .....	52
Support .....	22	Windows® XP/2000 Users .....	52
About .....	23	Windows® 7/Windows Vista® Users.....	53
<b>Connect to a Wireless Network.....</b>	<b>24</b>	Windows® 8 Users .....	54
Using Windows® 8 .....	24	<b>Technical Specifications .....</b>	<b>55</b>
Using Windows® 7 .....	26		
Using Windows Vista® .....	27		
Using Windows® XP .....	28		

# Package Contents

- D-Link DWA-525 Wireless N 150 Desktop PCI Adapter
- One Antenna
- Low Profile Mounting Bracket
- Manual and Warranty on CD
- D-Link Wireless Connection Manager on CD



# System Requirements

- A desktop computer with an available PCI slot
- Windows® 8/7, Vista (32/64-bit), or XP (32/64-bit with Service Pack 2 or higher)
- 300MHz processor and at least 64MB of RAM

# Introduction

The D-Link Wireless N 150 Desktop PCI Adapter (DWA-525) is a 802.11n client device that delivers unrivaled wireless performance for your desktop computer. With the DWA-525, you can add or upgrade your Desktop PC's wireless connectivity without having to purchase a new computer. Once connected, access your network's high-speed Internet connection while sharing photos, files, music, video, printers, and storage. Get a better Internet experience with a faster wireless connection so you can enjoy digital phone calls, gaming, downloading, and video streaming.

Powered by Wireless N 150 technology, the DWA-525 provides a faster wireless connection and superior reception than 802.11g\*. The DWA-525 is designed for use in bigger homes and for those that demand higher networking. Maximize wireless performance by connecting this desktop adapter to a Wireless N 150 Router and stay connected from virtually anywhere in the home. This adapter supports WEP, WPA, and WPA2 encryption to prevent outside intrusion and protect your personal information from being exposed.

The D-Link DWA-525 is a powerful 32-bit desktop adapter that installs quickly and easily into desktop computers. Like all D-Link wireless adapters, the DWA-525 can be used in ad-hoc mode to connect directly with other cards for peer-to-peer file sharing or in infrastructure mode to connect with a wireless access point or router for access to the Internet in your office or home network.

The DWA-525 features robust security to help protect the wireless network from intruders, complying with the latest wireless networking security protocols, including WEP encryption and Wi-Fi Protected Access (WPA) support for WPA2-PSK. The DWA-525 also includes a configuration utility to discover available wireless networks and create and save detailed connectivity profiles for those networks most often accessed.

\*Maximum wireless signal rate derived from IEEE Standard 802.11g and 802.11n specifications. Actual data throughput will vary. Network conditions and environmental factors, including volume of network traffic, building materials and construction, and network overhead, lower actual data throughput rate. Environmental factors will adversely affect wireless signal range.

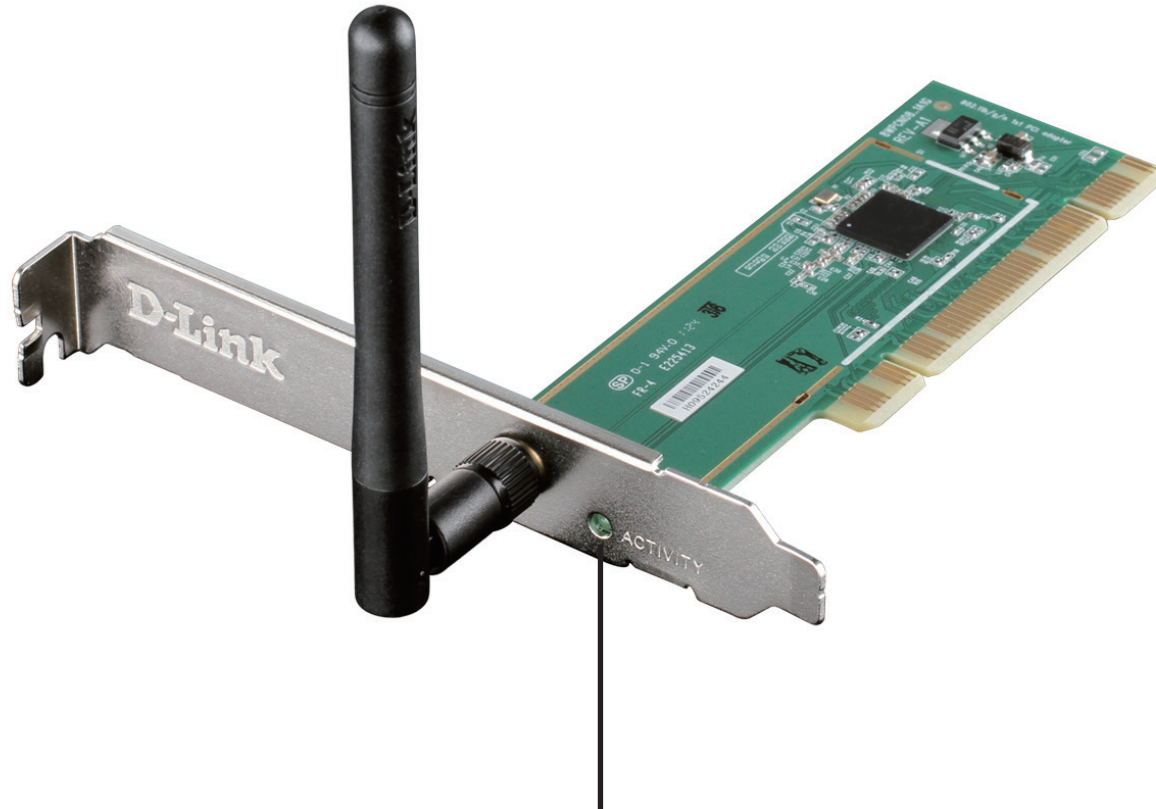
# Features

- **Faster Wireless Networking\*** - Enable wireless connectivity on your Desktop PC computer with the DWA-525. With the performance of D-Link's Wireless N 150 line of wireless products, the DWA-525 delivers a more reliable wireless connection. Perform multiple network tasks at once with the speed provided by this Wireless Adapter.
- **Compatible with 802.11b and 802.11g Devices** - Fully compatible with the IEEE 802.11b and 802.11g standards, the DWA-525 can connect with existing 802.11b or 802.11g compliant routers, access points and cards. That means you can still communicate with colleagues and friends while you have the ability to link to even more wireless networks.
- **Better Security with WPA/WPA2 and WPS** - With the DWA-525 in your Desktop PC you can securely connect to a wireless network using WPA/WPA2 (Wi-Fi Protected Access) for wireless authentication, as well as WPS (Wi-Fi Protected Setup) providing you a much higher level and an easier way of security for your data and communication than has previously been available.

\*Maximum wireless signal rate derived from IEEE Standard 802.11g and 802.11n specifications. Actual data throughput will vary. Network conditions and environmental factors, including volume of network traffic, building materials and construction, and network overhead, lower actual data throughput rate. Environmental factors will adversely affect wireless signal range.

# Hardware Overview

## LEDs



### **WLAN LED**

A solid light indicates that wireless is ready. This LED blinks during wireless data transmission.

# Installation

This section will walk you through the installation process. If you have a built-in wireless adapter, please disable it in the device manager before installing your D-Link adapter. Also, if you have previously installed another wireless adapter, please make sure any software is uninstalled.

**Note:** Do **NOT** install the PCI adapter into your computer before installing the drivers.

## Getting Started

Before installing your new D-Link wireless adapter, please verify the following:

- Remove any previous installations of wireless adapters
- Disable any built-in wireless adapters
- Verify the settings such as the SSID and security settings of the network(s) you want to connect to

## Remove Existing Installations

If you have installed a different manufacturer's adapter or a different model D-Link adapter, make sure the software is uninstalled before installing the new software. Some utilities may cause a conflict with the new software. If you plan to use multiple adapters at different times, make sure the utilities are not set to load when your computer boots up. Windows Vista® and XP users may use the built-in wireless utility for all adapters.

To remove any old software:

Windows® 8 users: Press **Windows Key + Q** > **Control Panel** > **Uninstall Programs**.

Windows® 7 users: Click **Start** > **Control Panel** > **Programs and Features**.

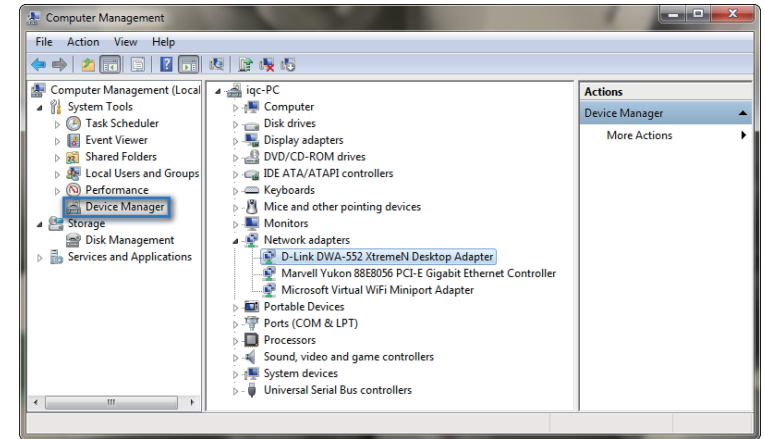
Windows Vista®/XP users: Click **Start** > **Control Panel** > **Add or Remove Programs**.

## Disable Other Wireless Adapters

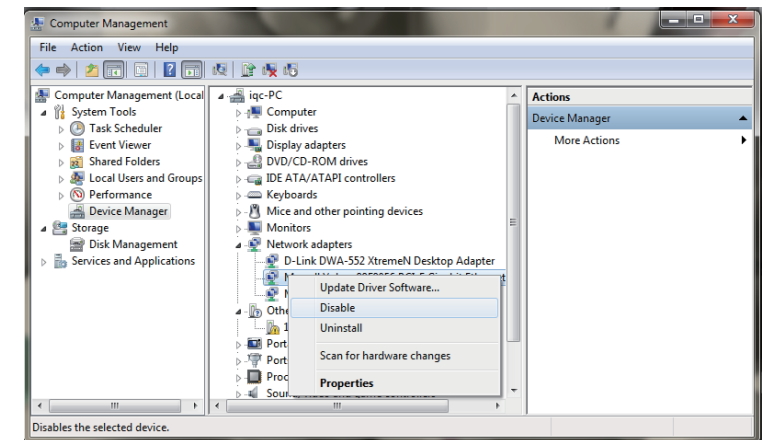
To prevent any conflicts with the D-Link wireless adapter, it is recommended to disable any wireless adapter (as well as any unused Ethernet adapters).

From the desktop, right-click on the **My Computer** icon and select **Properties**.

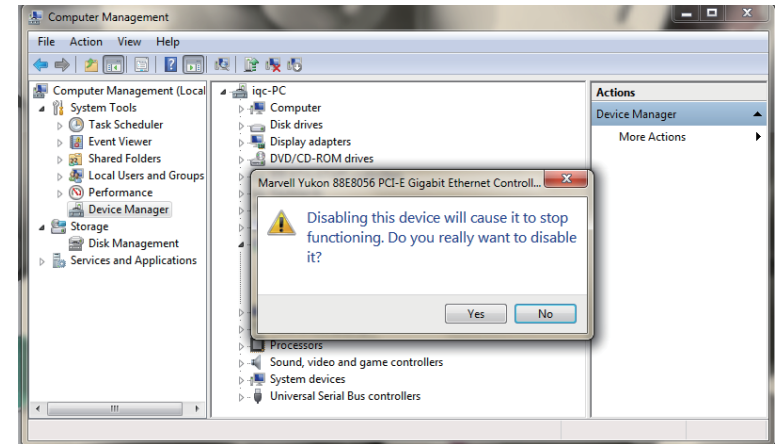
Click the **Hardware** tab and then click **Device Manager**. Scroll down the list and click the + sign to the left of **Network Adapters**.



Right-click the adapter you would like to disable and select **Disable**.

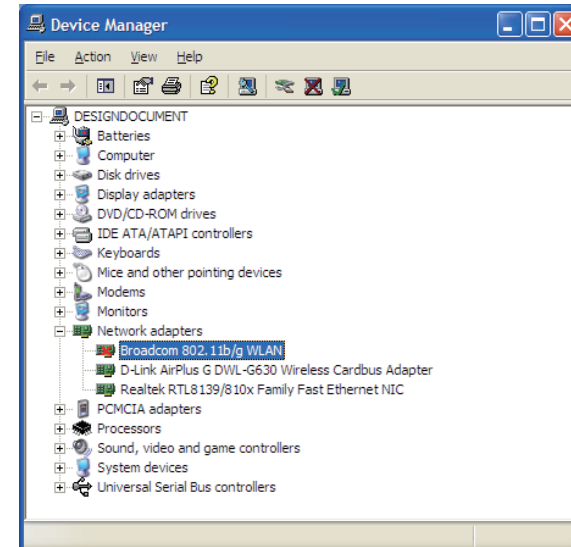


Click **Yes** to disable the adapter.



The adapter is now disabled. When disabled, a red X will be displayed.

Disabling the adapter will not remove the drivers. If you would like to use the adapter, simply right-click it and select **Enable**.



## Wireless Installation Considerations

The D-Link wireless adapter lets you access your network using a wireless connection from virtually anywhere within the operating range of your wireless network. Keep in mind, however, that the number, thickness and location of walls, ceilings, or other objects that the wireless signals must pass through, may limit the range. Typical ranges vary depending on the types of materials and background RF (radio frequency) noise in your home or business. The key to maximizing wireless range is to follow these basic guidelines:

1. Keep the number of walls and ceilings between the D-Link adapter and other network devices to a minimum. Each wall or ceiling can reduce your adapter's range from 3-90 feet (1-30 meters). Position your devices so that the number of walls or ceilings is minimized.
2. Be aware of the direct line between network devices. A wall that is 1.5 feet thick (.5 meters), at a 45-degree angle appears to be almost 3 feet (1 meter) thick. At a 2-degree angle it looks over 42 feet (14 meters) thick! Position devices so that the signal will travel straight through a wall or ceiling (instead of at an angle) for better reception.
3. Building Materials make a difference. A solid metal door or aluminum studs may have a negative effect on range. Try to position access points, wireless routers, and computers so that the signal passes through drywall or open doorways. Materials and objects such as glass, steel, metal, walls with insulation, water (fish tanks), mirrors, file cabinets, brick, and concrete will weaken your wireless signal.
4. Keep your product away (at least 3-6 feet or 1-2 meters) from electrical devices or appliances that generate RF noise.
5. If you are using 2.4GHz cordless phones or X-10 (wireless products such as ceiling fans, lights, and home security systems), your wireless connection may degrade dramatically or drop completely. Make sure your 2.4GHz phone base is as far away from your wireless devices as possible. The base transmits a signal even if the phone is not in use.

# Software/Driver Installation

**Note:** Do **NOT** install the DWA-525 Desktop Adapter into your computer before installing the driver software from the D-Link CD. When the “Add New Hardware” wizard appears, click **Cancel**.

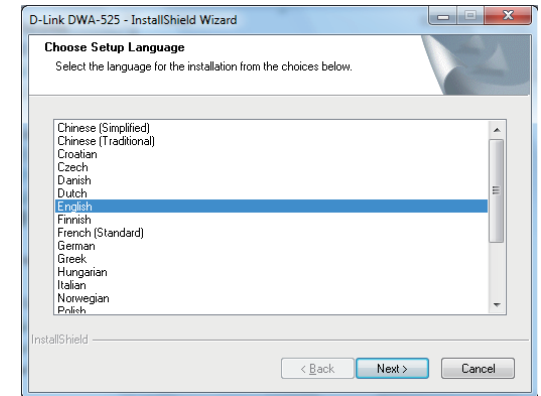
Turn on the computer and Insert the D-Link DWA-525 Driver CD in the CD-ROM drive. The step-by-step instructions that follow are shown in Windows Vista®. The steps and screens are similar for other Windows® operating systems.

If the CD Autorun function does not automatically start on your computer, go to **Start > Run**. In the run box, type “**D:\autorun.exe**” (where **D:** represents the drive letter of your CD-ROM drive).

Click **Install Drivers**



The **InstallShield Wizard** window will appear. Select the language to use and click **Next** to continue.



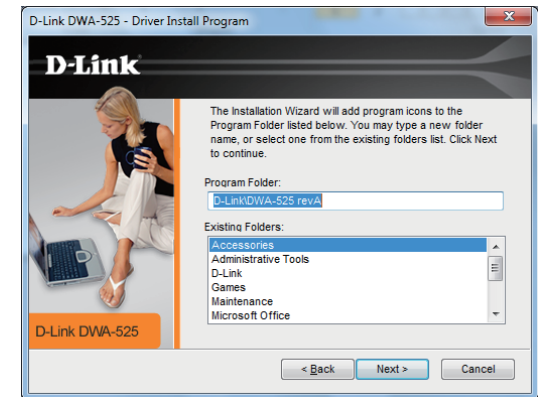
The **Welcome** window will appear. Click **Next** to continue.



By default setup will install to the default location: *C:\Program Files\D-Link\DWA-525*, where C: represents the drive letter of your hard drive. To install to a different location click **Browse** and specify the location. Click **Next** to continue.



Select the Program Files folder location. Click **Next** to continue.



Click **Next** to continue.



Once you click **Finish**, shut down your computer and unplug the power. Please install your PCI adapter into your computer.

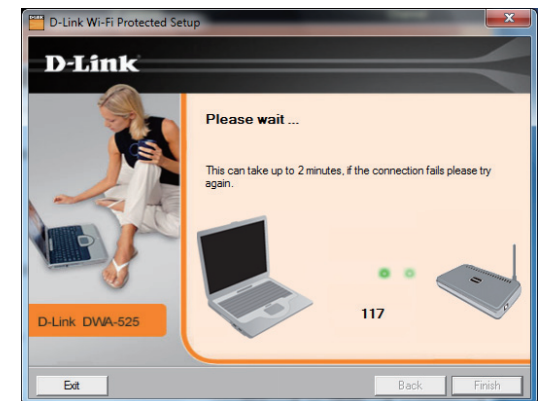


## Push Button Configuration (PBC)

To connect to your network using the WPS push button configuration method, click the virtual button as shown in the screenshot.



Press the WPS button on your access point or wireless router within two minutes to establish connectivity.



When this screen appears, you have successfully connected to your wireless network. Click **Finish** to complete your setup.

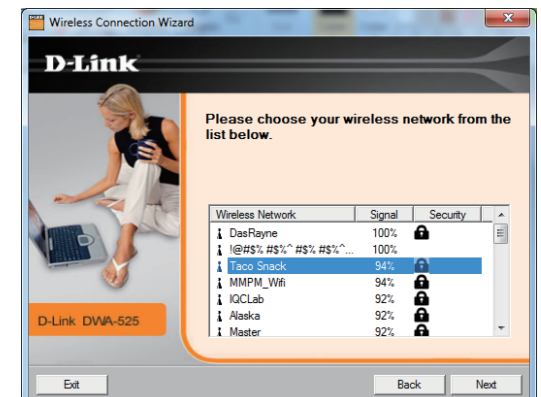


## Manual Connect

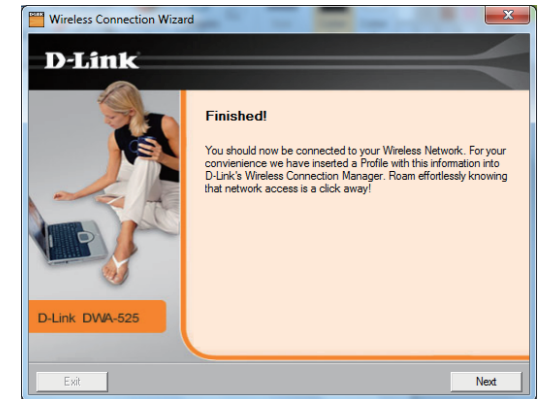
To manually connect to your wireless network, select **Manually connect to a wireless network** and then click **Next**.

Enter the network name (SSID) manually. If you enter the SSID incorrectly, you will automatically be brought to the site survey page. Click **Scan** to display the site survey page.

When you click the **Scan** button, a list of wireless networks (site survey) will appear. Click on the network name (SSID) that you want to connect to and click **Next** to continue. If there is a lock icon under Security, you will be prompted to enter the encryption key.



When this screen appears, you are successfully connected to your wireless network. Click **Finish** to complete your setup.



# Configuration

This section will show you how to configure your new D-Link wireless adapter using the D-Link Utility as well as Windows® XP Zero Configuration and Windows® 7 / Vista® WLAN Auto Configuration.

## D-Link Wireless Connection Manager

The D-Link DWA-525 uses the Wireless Connection Manager as the management software. The manager provides the user an easy interface to change any settings related to the wireless adapter. Clicking on the Wireless Connection Manager icon on the desktop will start the Configuration.

If you are using Windows® 7, skip to page 24; for Windows Vista®, please skip to page 25; for Windows® XP skip to page 26.

Double-click the **Wireless Connection Manager** icon on your desktop.



ll display all wireless networks th

**Activate Button:** Select a wireless network profile from the drop-down menu and click Activate to connect. Allow up to 30 seconds to connect.

## My Wireless Networks

The My Wireless Networks page will allow you to create, edit, and delete wireless network profiles. Every time you connect to a network using the *Wireless Networks* page, a profile will automatically be created.

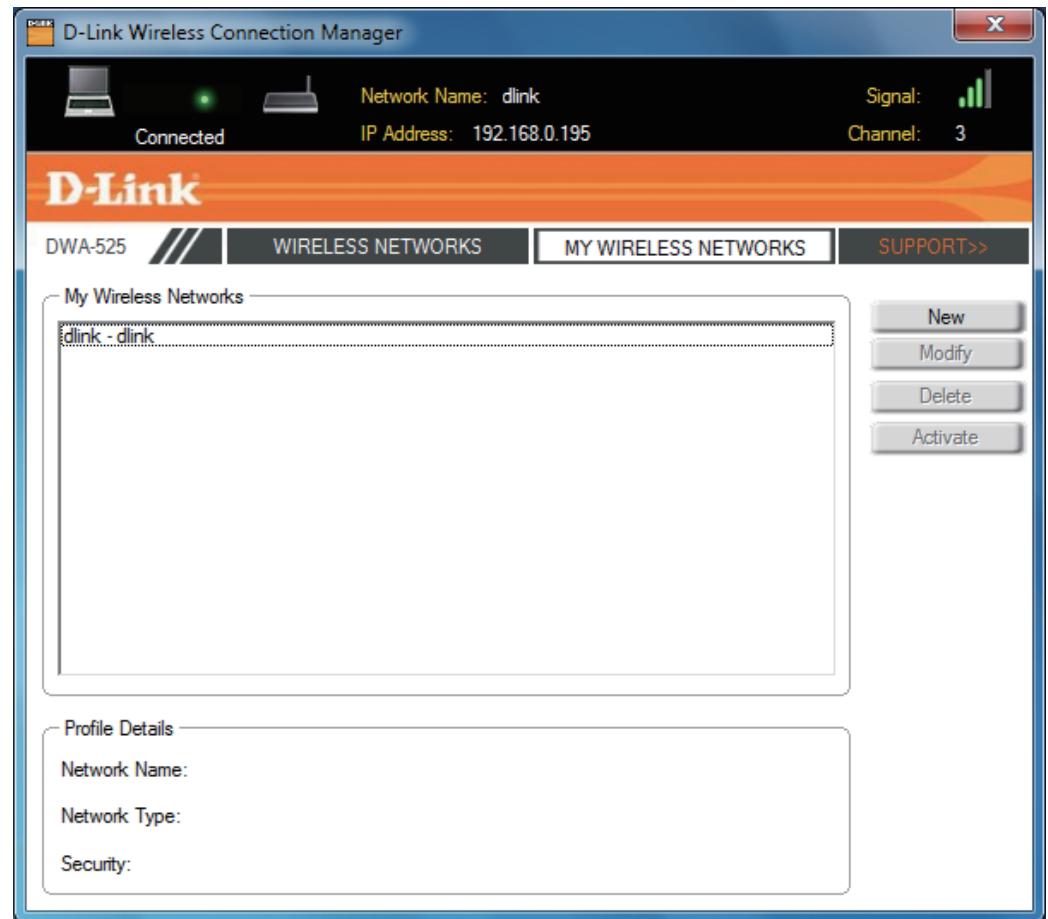
**New:** Click **New** to create a new wireless network profile (refer to the next page).

**Modify:** Click **Modify** to edit a current profile (refer to page 21).

**Delete:** Click **Delete** to remove a profile.

**Activate:** Click **Activate** to use a profile. Allow up to 30 seconds to connect to the wireless network.

**Profile Details:** The Profile Details section will display information about the wireless network such as the network name (SSID) and if the network is secured.



## Add Profile

You may add a new network by clicking the **New** button from the *My Wireless Networks* page.

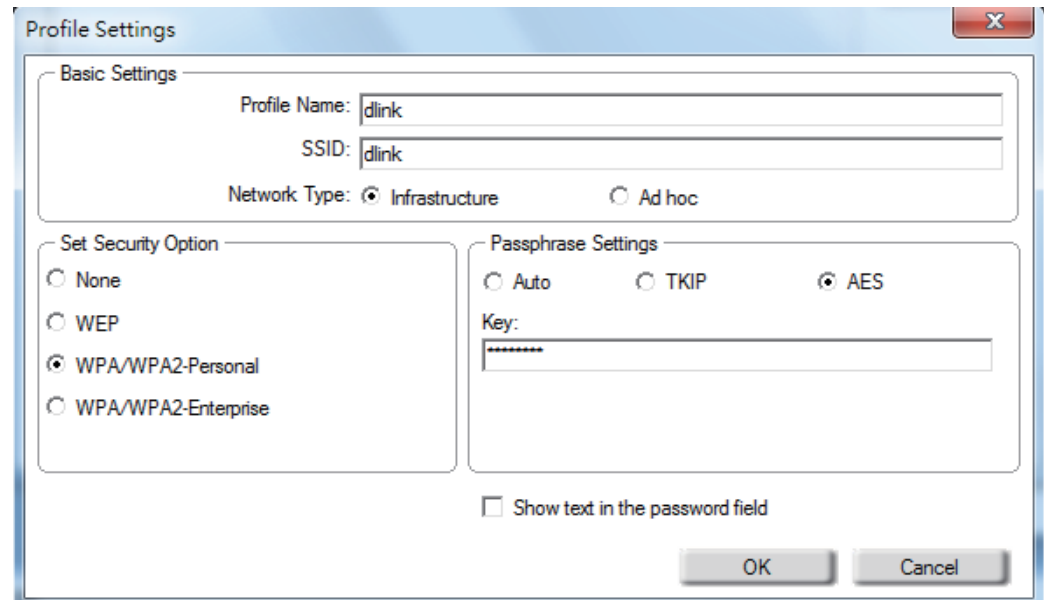
**Profile Name:** Enter a name for your profile (e.g. Home, Office, Coffee Shop).

**SSID:** Enter the SSID of the wireless network.

**Network Type:** Select the network type. If you are connecting to a wireless router or access point, select **Infrastructure**. If you are connecting to another wireless client such as an adapter, select **Ad-Hoc**.

**Set Security:** Select the type of security used. Please refer to the **Wireless Security** section for more information.

**OK Button:** Click **OK** to save your settings.



The screenshot shows a 'Profile Settings' dialog box with a blue title bar and a close button (X) in the top right corner. The dialog is divided into two main sections: 'Basic Settings' and 'Set Security Option'. In the 'Basic Settings' section, there are two text input fields: 'Profile Name' containing 'dlink' and 'SSID' containing 'dlink'. Below these is a 'Network Type' section with two radio buttons: 'Infrastructure' (selected) and 'Ad hoc'. The 'Set Security Option' section contains four radio buttons: 'None', 'WEP', 'WPA/WPA2-Personal' (selected), and 'WPA/WPA2-Enterprise'. To the right of this section is a 'Passphrase Settings' section with three radio buttons: 'Auto', 'TKIP', and 'AES' (selected). Below these is a 'Key:' label followed by a password input field filled with asterisks. At the bottom right of the dialog, there is a checkbox labeled 'Show text in the password field' which is unchecked, and two buttons: 'OK' and 'Cancel'.

## Modify Profile

You may edit an existing profile by clicking the **Modify** button from the *My Wireless Networks* page.

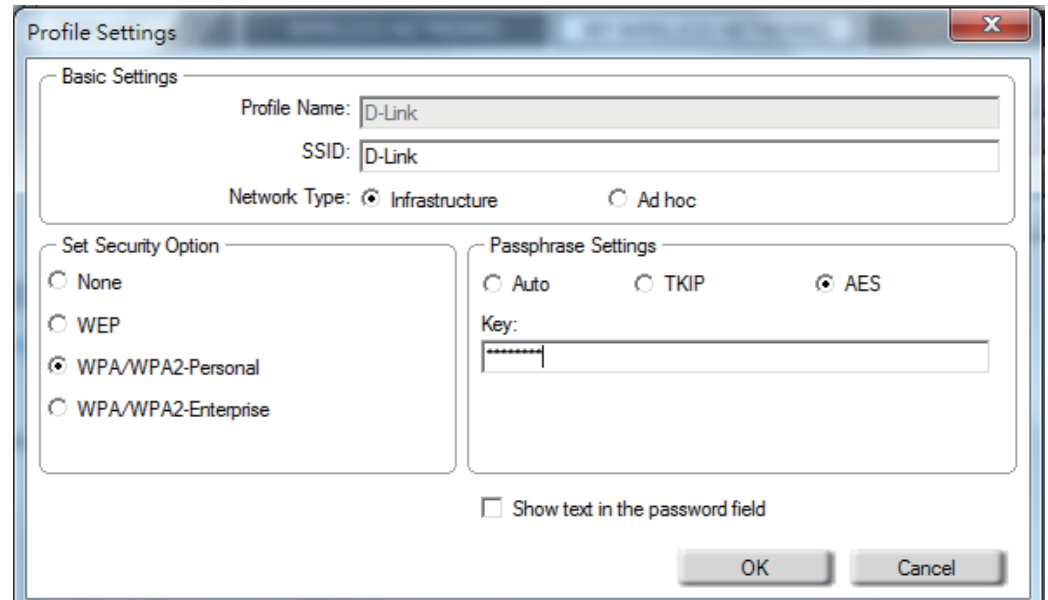
**Profile Name:** Enter a name for your profile (e.g. Home, Office, Coffee Shop).

**SSID:** Displays the SSID of the network.

**Network Type:** Displays the network type.

**Set Security:** Select the type of security used. Please refer to the **Wireless Security** section for more information.

**OK Button:** Click **OK** to save your settings.

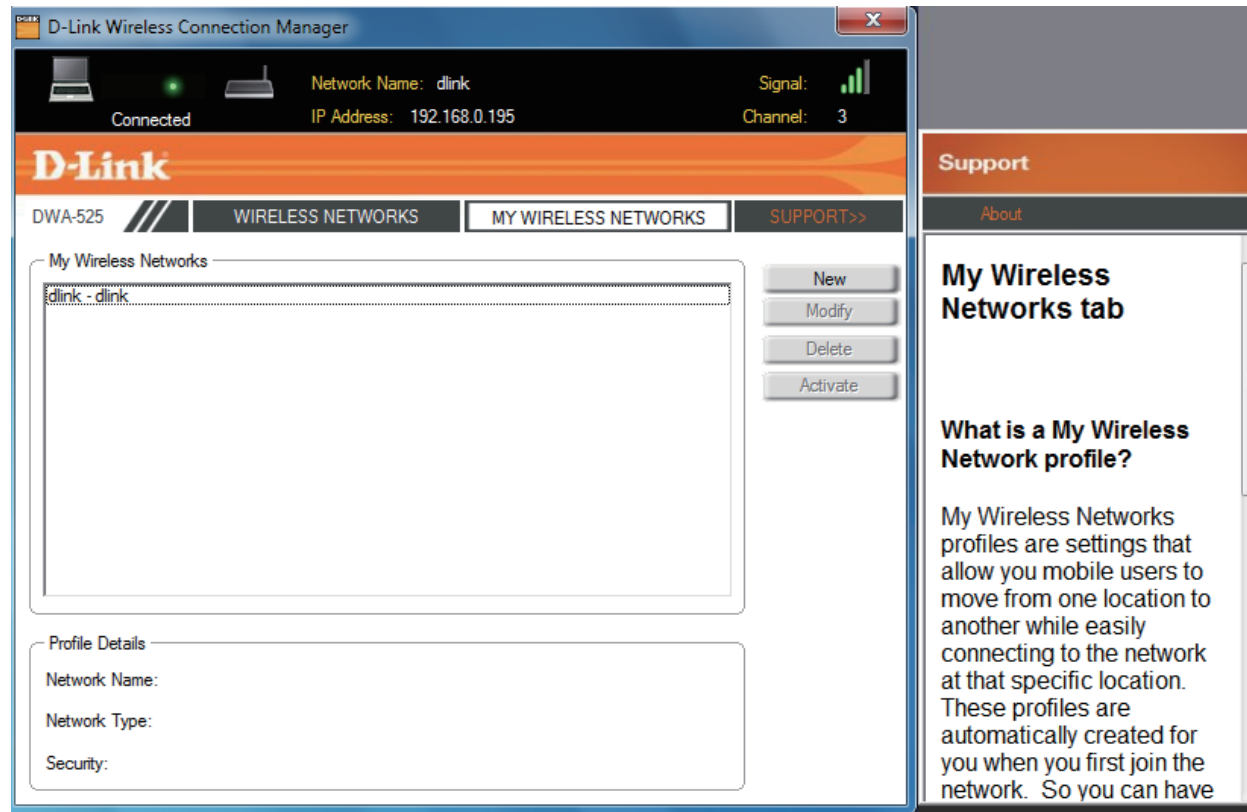


The screenshot shows a 'Profile Settings' dialog box with the following fields and options:

- Basic Settings:**
  - Profile Name: D-Link
  - SSID: D-Link
  - Network Type: ☒ Infrastructure ☐ Ad hoc
- Set Security Option:**
  - ☐ None
  - ☐ WEP
  - ☒ WPA/WPA2-Personal
  - ☐ WPA/WPA2-Enterprise
- Passphrase Settings:**
  - ☐ Auto ☐ TKIP ☒ AES
  - Key: [password field with asterisks]
- ☐ Show text in the password field
- Buttons: OK, Cancel

# Support

If you need help, click the **Support** button. A panel will appear to the right of the utility which will display information about the utility.



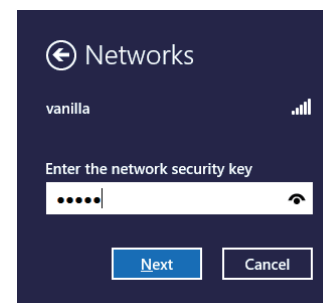
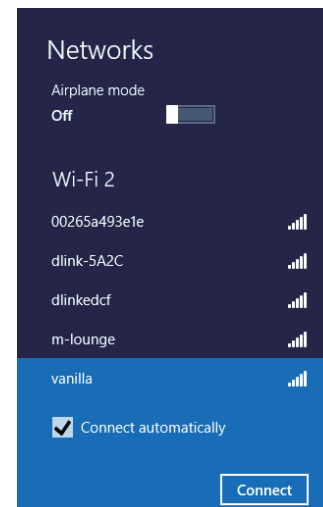
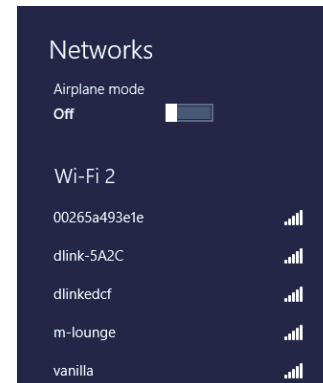
## About

The About screen gives you information about the Driver and Utility Versions of the DWA-525.

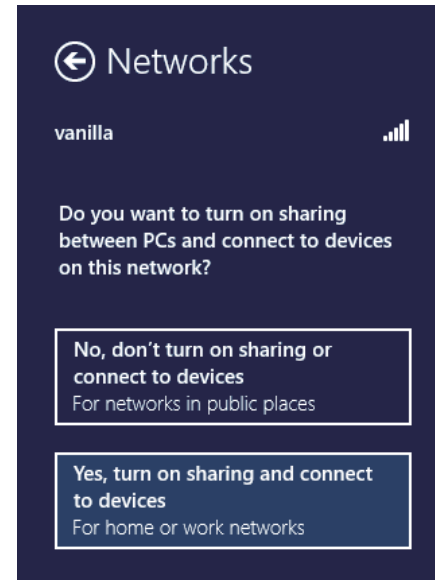


# Connect to a Wireless Network Using Windows® 8

1. Click on the wireless computer icon in your system tray (lower-right corner next to the time).
2. A list of available wireless networks will appear.
3. Click the wireless network (SSID) you want to connect to and then click **Connect**.
4. If the network is secure/encrypted, enter the Wi-Fi password (security key) and click **Next**.



5. Click either to enable or disable file sharing.
6. You will now be connected to your wireless network.



If you get a good signal but cannot access the Internet, confirm the encryption by reviewing the profile or check the TCP/IP settings for your wireless adapter. Refer to the *Networking Basics* section in this manual for more information.

# Connect to a Wireless Network Using Windows® 7

Windows® 7 users may use the built-in wireless utility. If you are using another company's utility or Windows® 2000, please refer to the user manual of your wireless adapter for help with connecting to a wireless network. Most utilities will have a "site survey" option similar to the Windows® 7 utility as seen below.

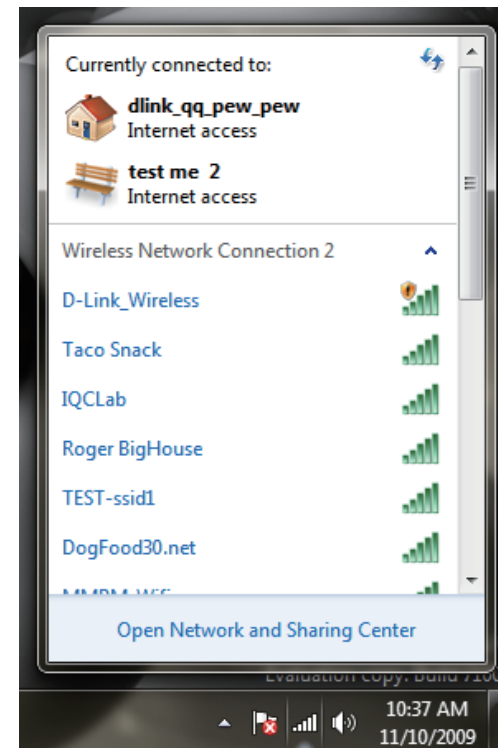
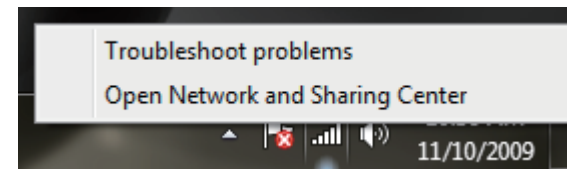
If you receive the **Wireless Networks Detected** bubble, click on the center of the bubble to access the utility.

or

Left-click the wireless icon in your system tray (lower-right corner next to the time).

The utility will display any available wireless networks in your area. Click on a network (displayed using the SSID) and click the **Connect** button.

If you get a good signal but cannot access the Internet, check your TCP/IP settings for your wireless adapter. Refer to the **Networking Basics** section in this manual for more information.



# Connect to a Wireless Network Using Windows Vista®

Windows Vista® users may use the built-in wireless utility. If you are using another company's utility or Windows® 2000, please refer to the user manual of your wireless adapter for help with connecting to a wireless network. Most utilities will have a "site survey" option similar to the Windows Vista® utility as seen below.

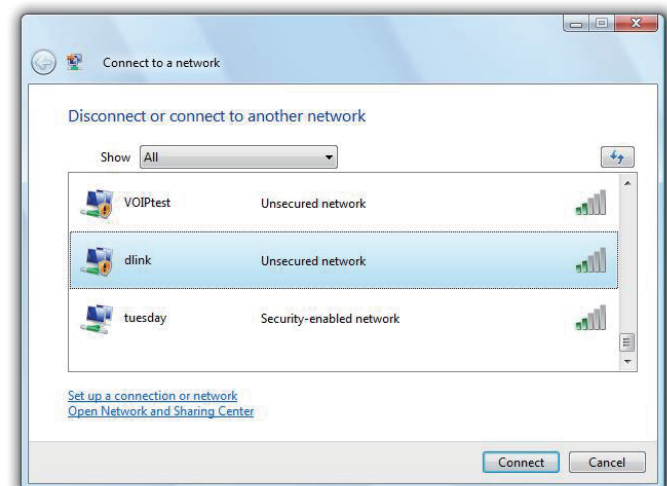
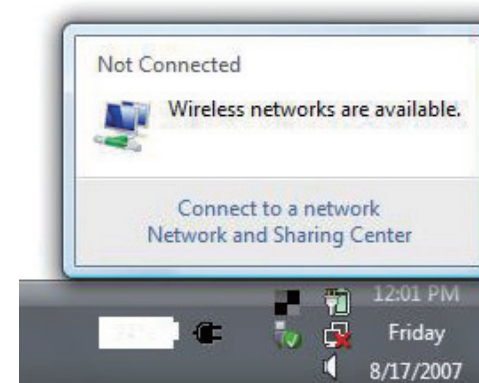
If you receive the **Wireless Networks Detected** bubble, click on the center of the bubble to access the utility.

or

Right-click on the wireless computer icon in your system tray (lower-right corner next to the time). Select **Connect to a network**.

The utility will display any available wireless networks in your area. Click on a network (displayed using the SSID) and click the **Connect** button.

If you get a good signal but cannot access the Internet, check the TCP/IP settings for your wireless adapter. Refer to the **Networking Basics** section in this manual for more information.



# Connect to a Wireless Network Using Windows® XP

Windows® XP users may use the built-in wireless utility (Zero Configuration Utility). The following instructions are for Service Pack 2 users. If you are using another company's utility or Windows® 2000, please refer to the user manual of your wireless adapter for help with connecting to a wireless network. Most utilities will have a "site survey" option similar to the Windows® XP utility as seen below.

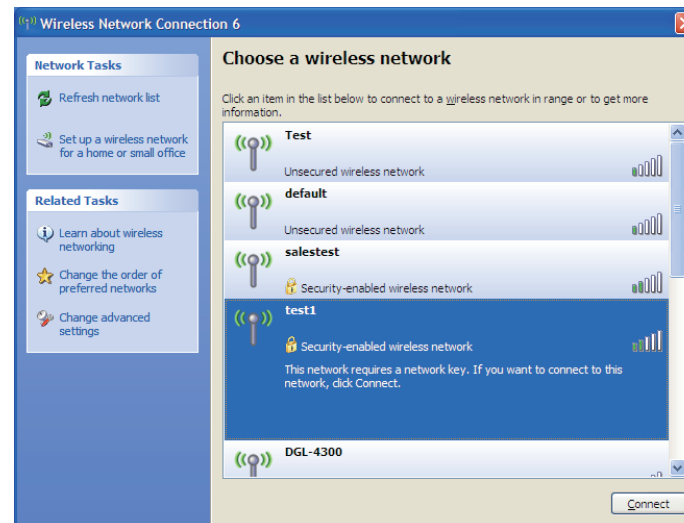
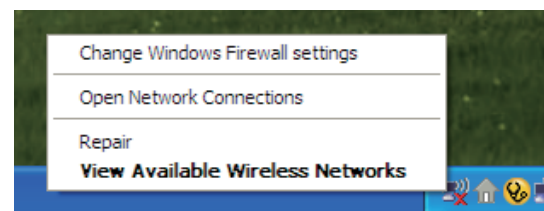
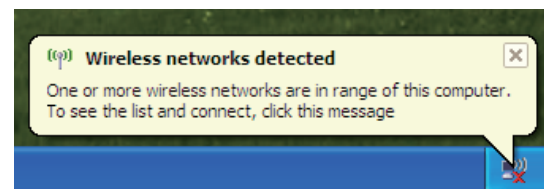
If you receive the **Wireless Networks Detected** bubble, click on the center of the bubble to access the utility.

or

Right-click on the wireless computer icon in your system tray (lower-right corner next to the time). Select **View Available Wireless Networks**.

The utility will display any available wireless networks in your area. Click on a network (displayed using the SSID) and click the **Connect** button.

If you get a good signal but cannot access the Internet, check the TCP/IP settings for your wireless adapter. Refer to the **Networking Basics** section in this manual for more information.



# Wireless Security

This section will show you the different levels of security you can use to protect your data from intruders. The DWA-525 offers the following types of security:

- WPA/WPA2-Personal
- WPA/WPA2-Enterprise

## What is WPA™?

WPA, or Wi-Fi® Protected Access, is a Wi-Fi standard that was designed to improve the security features of WEP (Wired Equivalent Privacy).

The two major improvements over WEP:

- Improved data encryption through the Temporal Key Integrity Protocol (TKIP). TKIP scrambles the keys using a hashing algorithm and, by adding an integrity-checking feature, ensures that the keys have not been tampered with. WPA2 is based on 802.11i and uses Advanced Encryption Standard instead of TKIP.
- User authentication, which is generally missing in WEP, through the extensible authentication protocol (EAP). WEP regulates access to a wireless network based on a computer's hardware-specific MAC address, which is relatively simple to be sniffed out and stolen. EAP is built on a more secure public-key encryption system to ensure that only authorized network users can access the network.

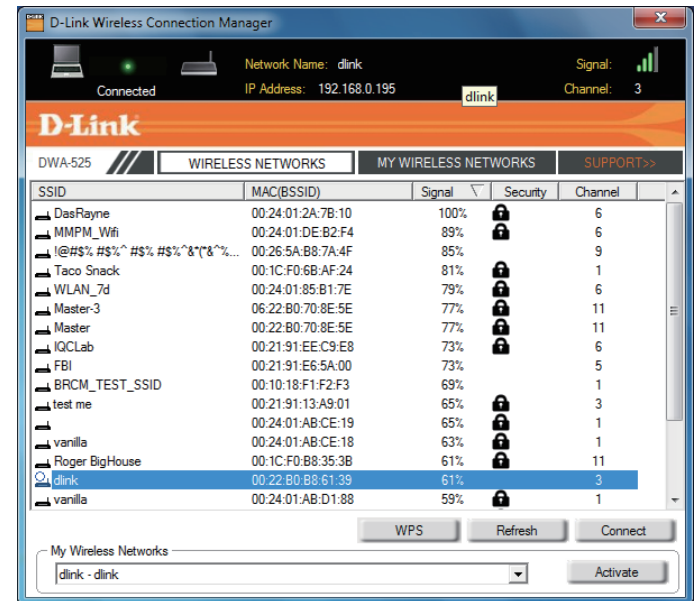
WPA/WPA2-Personal uses a passphrase or key to authenticate your wireless connection. The key is an alpha-numeric password between 8 and 63 characters long. The password can include symbols (!?\*&\_) and spaces. This key must be the exact same key entered on your wireless router or access point.

WPA/WPA2-Enterprise incorporates user authentication through the Extensible Authentication Protocol (EAP). EAP is built on a more secure public key encryption system to ensure that only authorized network users can access the network.

# Configure WPA™/WPA2™ - Personal Using the D-Link Utility

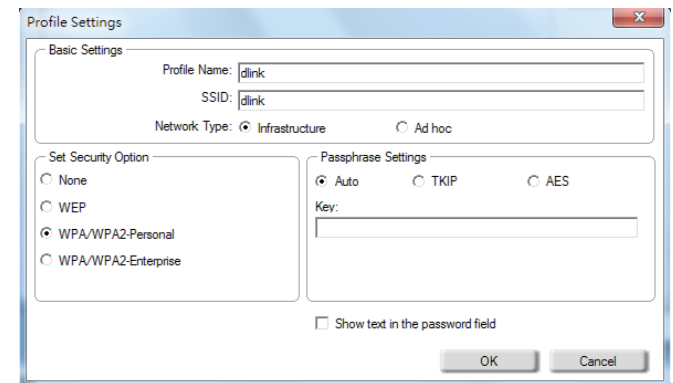
It is recommended to enable WPA/WPA2-Personal on your wireless router or access point before configuring your wireless adapter. If you are joining an existing network, you will need to know the WPA/WPA2-Personal passphrase being used.

1. Open the **Wireless Connection Manager** by double-clicking on the D-Link icon on your desktop.
2. Highlight the wireless network (SSID) you would like to connect to and click **Connect**. If the network is using WPA/WPA2-Personal, the screen (as shown to the bottom-right) will appear.



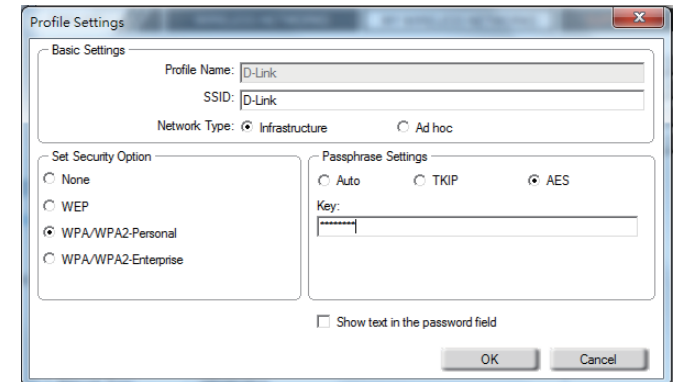
3. Enter the WPA/WPA2-Personal passphrase exactly as it is on your wireless router or access point. Click the **Show text in the password field** box to see the passphrase. Unchecking it will hide it.
4. Click **OK** to connect to the network. Allow up to 30 seconds to connect.

If you would like to create a new network and enter the WPA/WPA2-Personal settings, refer to the next page.



It is recommended to enable WPA™ /WPA2™ - Personal on your wireless router or access point before configuring your wireless adapter. Make sure you enter the passphrase exactly the same on all wireless devices.

1. Open the **Wireless Connection Manager** by double-clicking on the D-Link icon on your desktop. Click on **New** to create a new profile or highlight an existing profile and click **Modify**.
2. Select **WPA/WPA2-Personal** under *Set Security Option*.
3. Select **TKIP** or **AES**, or **Auto**.
4. Enter the passphrase exactly as it is on your wireless router or access point.
5. Click **OK** to connect to the network. Allow up to 30 seconds to connect.



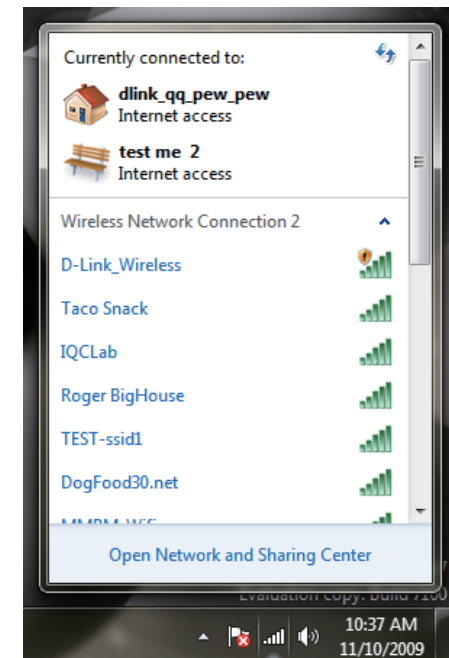
# Configure WPA™/WPA™ - Personal Using Windows® 7

It is recommended to enable wireless security (WPA/WPA2) on your wireless router or access point before configuring your wireless adapter. If you are joining an existing network, you will need to know the security key or passphrase being used.

1. Click on the wireless icon in your system tray (lower-right corner).



2. The utility will display any available wireless networks in your area.

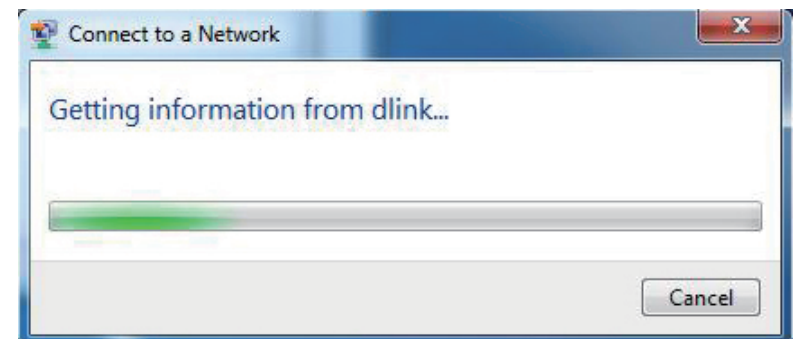


3. Highlight the wireless network (SSID) you would like to connect to and click the **Connect** button.

If you get a good signal but cannot access the Internet, check your TCP/IP settings for your wireless adapter. Refer to the **Networking Basics** section in this manual for more information.

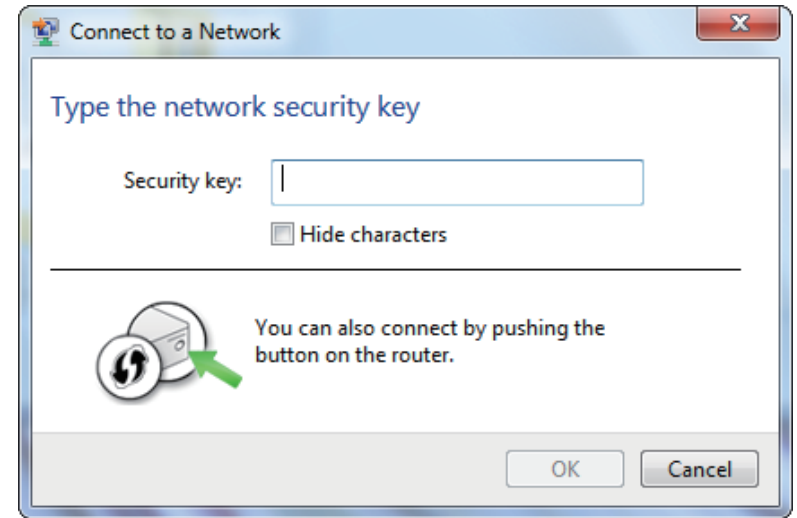


4. The following window appears while your computer tries to connect to the router.



5. Enter the same security key or passphrase that is on your router and click **Connect**. You can also connect by pushing the WPS button on the router.

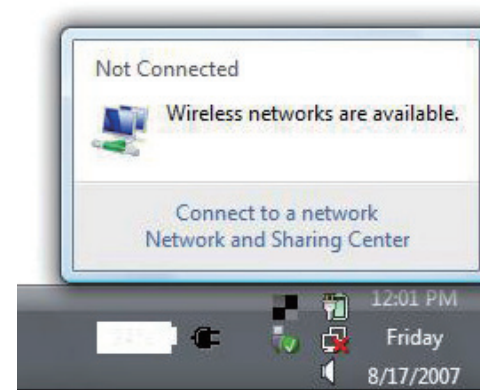
It may take 20-30 seconds to connect to the wireless network. If the connection fails, please verify that the security settings are correct. The key or passphrase must be exactly the same as on the wireless router.



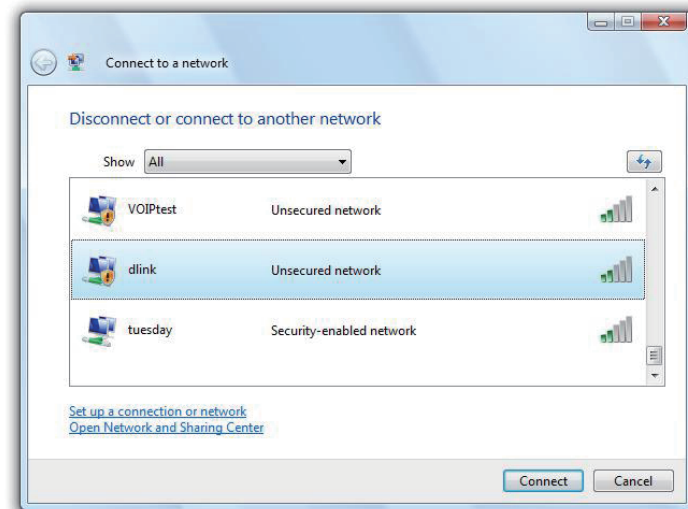
# Configure WPA™/WPA™-Personal Using Windows Vista®

It is recommended to enable wireless security (WPA/WPA2) on your wireless router or access point before configuring your wireless adapter. If you are joining an existing network, you will need to know the security key or passphrase being used.

1. Open the Windows Vista® Wireless Utility by right-clicking on the wireless computer icon in your system tray (lower right corner of screen). Select **Connect to a network**.

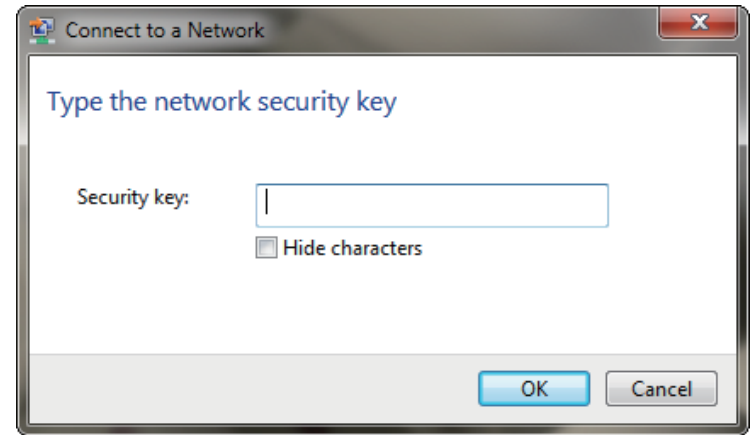


2. Highlight the wireless network (SSID) you would like to connect to and click **Connect**.



3. Enter the same security key or passphrase that is on your router and click **Connect**.

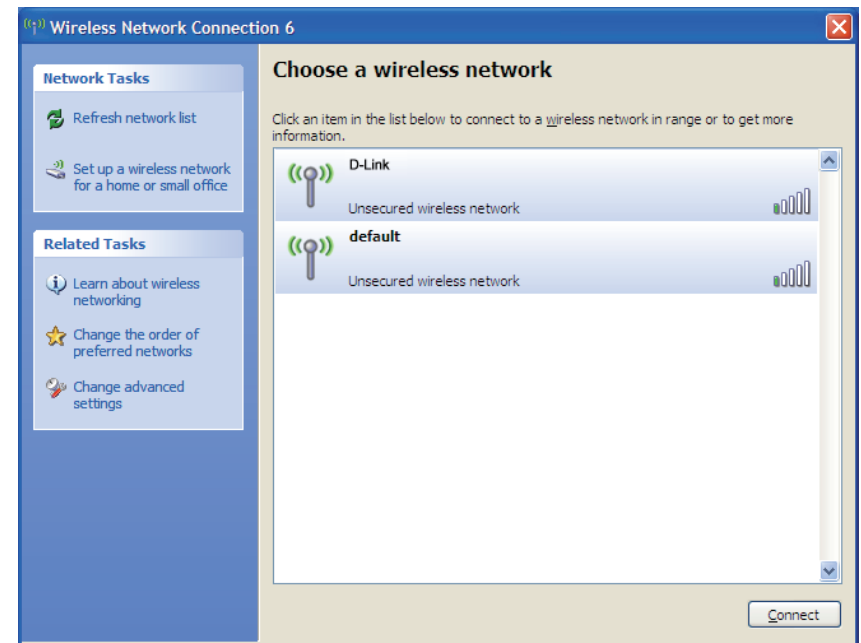
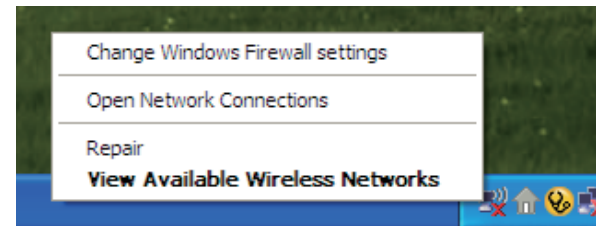
It may take 20-30 seconds to connect to the wireless network. If the connection fails, please verify that the security settings are correct. The key or passphrase must be exactly the same as on the wireless router.



# Configure WPA™/WPA2™ - Personal Using Windows® XP

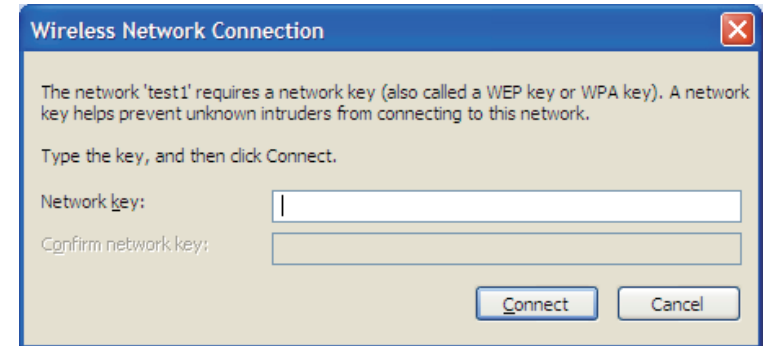
It is recommended to enable WPA/WPA2-Personal on your wireless router or access point before configuring your wireless adapter. If you are joining an existing network, you will need to know the WPA/WPA2-Personal key being used.

1. Open the Windows® XP Wireless Utility by right-clicking on the wireless computer icon in your system tray (lower-right corner of screen). Select **View Available Wireless Networks**.
2. Highlight the wireless network (SSID) you would like to connect to and click **Connect**.



3. The **Wireless Network Connection** box will appear. Enter the WPA™ / WPA2™-Personal passphrase and click **Connect**.

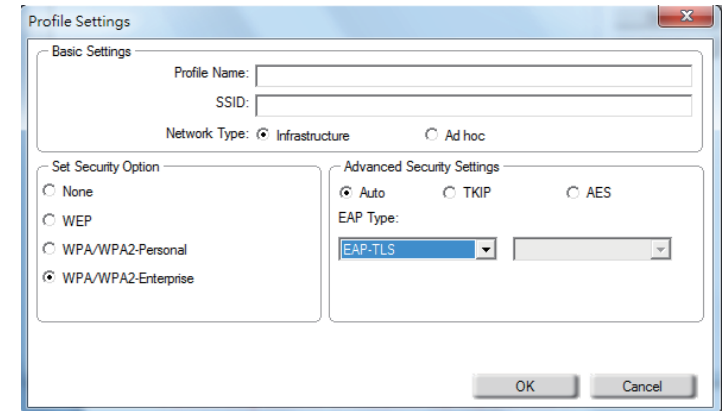
It may take 20-30 seconds to connect to the wireless network. If the connection fails, please verify that the WPA/WPA2-Personal settings are correct. The WPA/WPA2-Personal passphrase must be exactly the same as on the wireless router or access point.



# Configure WPA™/WPA2™-Enterprise Using the D-Link Utility

WPA/WPA2-Enterprise is for advanced users who are familiar with using a RADIUS server and setting up certificates.

1. Open the Wireless Connection Manager by double-clicking on the D-Link icon on your desktop. Click on **New** to create a new profile or highlight an existing profile and click **Modify**.
2. Select **WPA/WPA2-Enterprise** under *Set Security Option* and then select **TKIP** or **AES**.
3. Click on **Advanced Config** to continue\*.
4. Next to *EAP Type*, select **EAP-TLS**, **EAP-TTLS(XP/2000)**, or **PEAP**. Extensible Authentication Protocols allow devices on the network to request authentication from the RADIUS server in the network. All the devices on the network must use the same EAP type when using a RADIUS server for authentication. Some RADIUS servers require that the Validate Server field be selected. Check this field if your RADIUS server requires validation.
5. Select a **User Certificate** from the drop-down menu\*.
6. Enter the login information required to authenticate\*.
7. Click **Add** to enter the IP address(es) of your RADIUS servers\*.
8. Click **OK** to save your settings.



\*If you are using Windows 7/Vista, please skip step 3, 5, 6 and 7.

# Troubleshooting

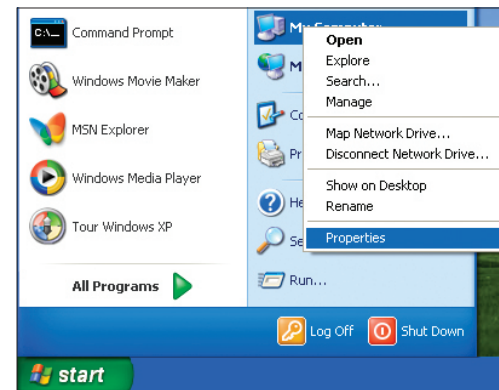
This chapter provides solutions to problems that can occur during the installation and operation of the DWA-525. Read the following descriptions if you are having problems. (The examples below are illustrated in Windows® XP. If you have a different operating system, the screenshots on your computer will look similar to the following examples.)

## 1. How do I know if my adapter is installed properly?

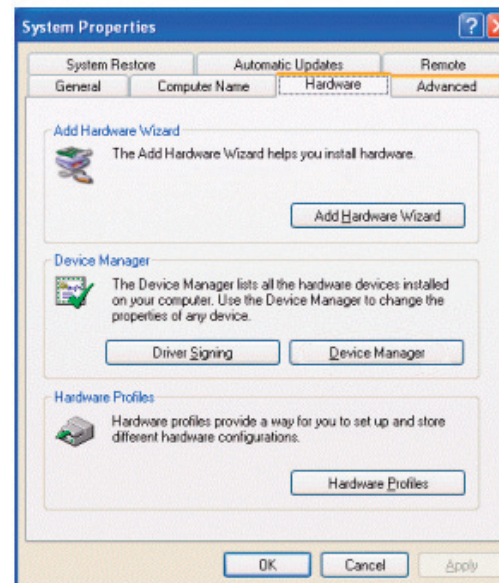
Windows XP - Go to **Start > My Computer > Properties > Hardware > Device Manager**.

Windows Vista/7 - Go to **Start > Device Manager**.

Windows 8 - Press the **Windows key** and **X** together and then click **Device Manager**.



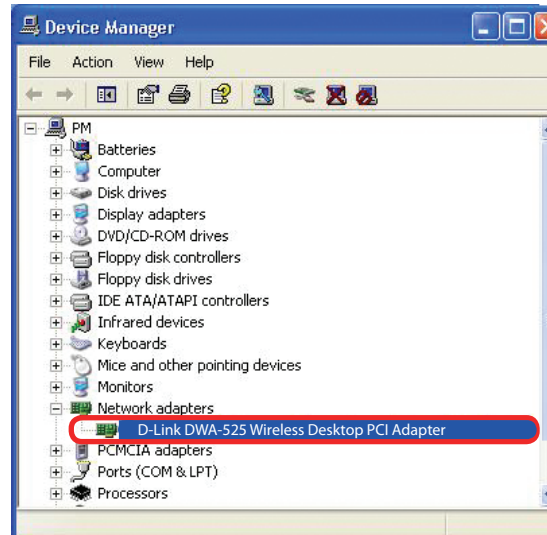
Select the **Hardware Tab**.



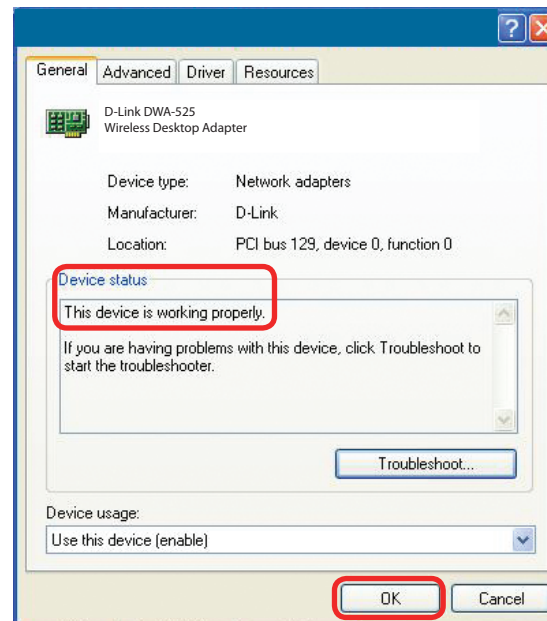
Click the + sign next to **Network Adapters**.

Right-click on **D-Link DWA-525 Wireless Desktop PCI Adapter**.

Select **Properties** to check that the drivers are installed properly.



Look under **Device Status** to check that the device is working properly. Click **OK** to continue.



## **2. I cannot connect to the access point or the wireless router.**

- Make sure that the SSID on the DWA-525 desktop adapter is exactly the same as the SSID on the Access Point or wireless router.
- Move the DWA-525 and Access Point or Wireless router into the same room and then test the wireless connection.
- Disable all security settings. (WEP, MAC Address Control, AES)
- Make sure that the Radio is not locked down to a different frequency.
- Turn off your Access Point and the computer with the DWA-525. Turn on the Access Point, and then turn on the computer with the DWA-525.
- Refresh the DWA-525 Utility.

## **3. The DWA-525 Power and Link lights are not on.**

- Check to see if the DWA-525 desktop adapter is firmly inserted into the PCI slot of your laptop computer.

## **4. I forgot my encryption key.**

- Reset the Access Point to its factory default settings and restore the DWA-525 Wireless Desktop Adapter to the factory default settings. The default settings are listed in the Configuration section in this manual.

## 5. The computer does not recognize the DWA-525 Wireless Adapter.

- Make sure that the DWA-525 Wireless Adapter is properly seated in the computer's PCI slot.
- If Windows does not detect the hardware upon insertion of the adapter, make sure to completely remove drivers that were previously loaded. To remove the drivers, do the following:
  - A. Under **Tools** > select **Folder Options...** > select **View** > under **Hidden files and folders** > select **Show hidden files and folders**.
  - B. Uncheck **Hide extension for known file types** > click on **Apply**.
  - C. Search for previously loaded driver files. Remove these files from the INF and SYSTEM (DRIVERS) folders in the Windows directory.

**Note:** Windows® XP and 2000 will rename .inf files that have not received WHQL certification into oem.inf files (e.g., oem1.inf).

## 6. The computer with the DWA-525 installed is unable to connect to the wireless network and/or the Internet.

- Check that the LED indicators for the broadband modem are indicating normal activity. If not, there may be a problem with the broadband connection.
- Check that the LED indicators on the wireless router are functioning properly. If not, check that the AC power and Ethernet cables are firmly connected.
- Check that the IP Address, subnet mask, gateway, and DNS settings are correctly entered for the network.

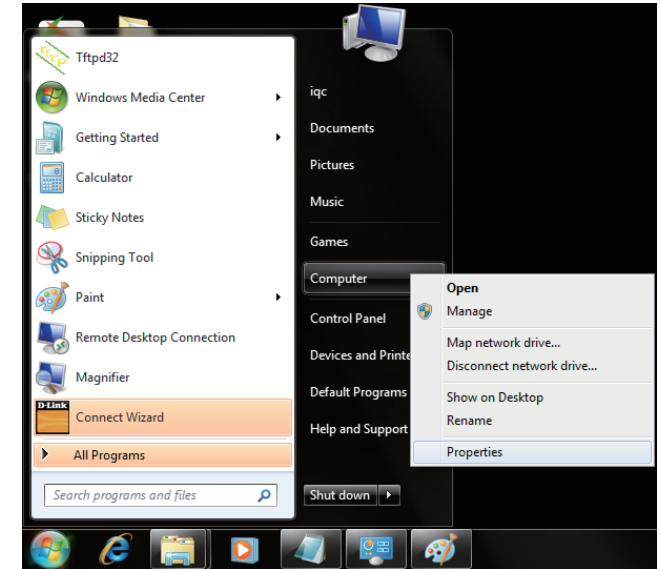
- In Infrastructure mode, make sure the same Service Set Identifier (SSID) is specified on the settings for the wireless clients and access points. The SSID factory default setting for D-Link products is default. The default SSID is "dlink".
- In **Ad-Hoc** mode, both wireless clients will need to have the same **SSID**. Please note that it might be necessary to set up one client to establish a **BSS (Basic Service Set)** and wait briefly before setting up other clients. This prevents several clients from trying to establish a **BSS** at the same time, which can result in multiple singular **BSSs** being established, rather than a single **BSS** with multiple clients associated to it.
- Check that the **Network Connection** for the wireless client is configured properly. Select **AP (Infrastructure)** when connecting to an access point and select **Ad-Hoc mode** when connecting without an access point. Double-click on the **WLAN icon** in the taskbar > click on **Configuration** to change the settings for the wireless adapter.
- If **Security** is enabled, make sure that the correct encryption keys are entered on both the DWA-525 and the access point. Double-click on the **WLAN icon** in the taskbar > click **Encryption**. Check to see that the key selected is set to the same key as other devices on the network.

## 7. How can I troubleshoot distance issues using the DWA-525?

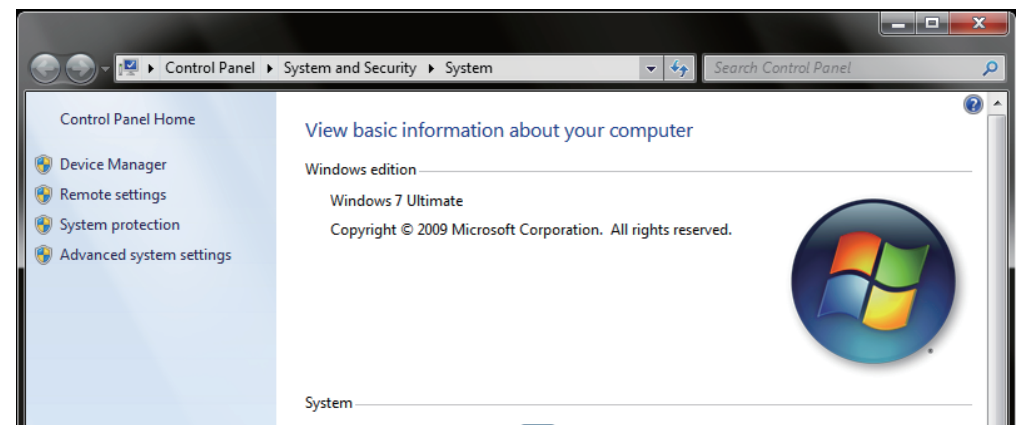
- Move the DWA-525 and Access Point or Wireless router into the same room and then test the wireless connection.
- Change the channel of the Access Point.
- Move devices within the line of sight.

# Windows® 7 Troubleshooting

Go to **Start > Computer > Properties**.



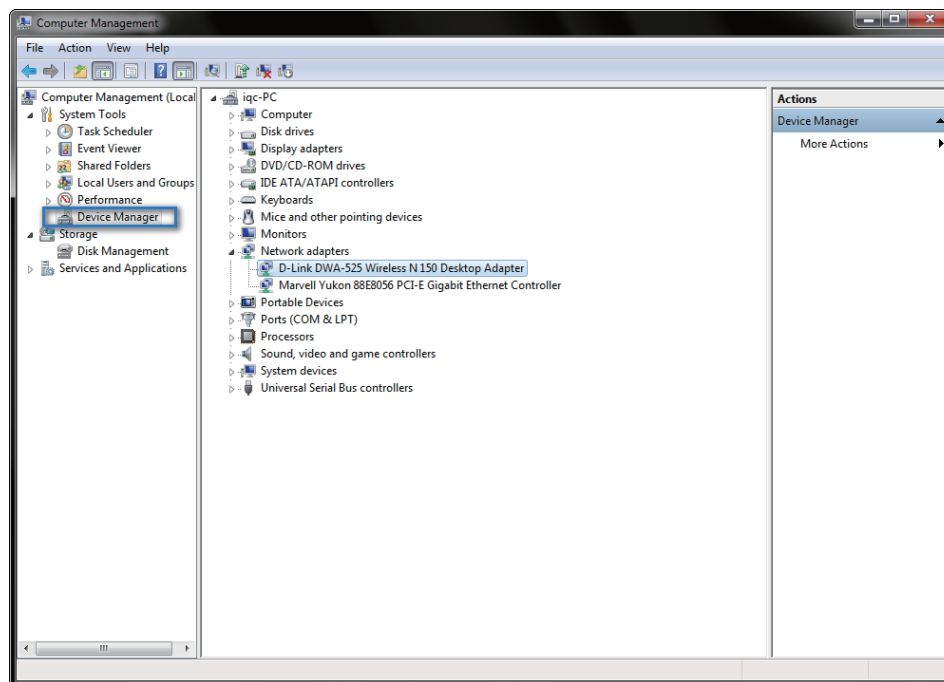
Select the **Device Manager**.



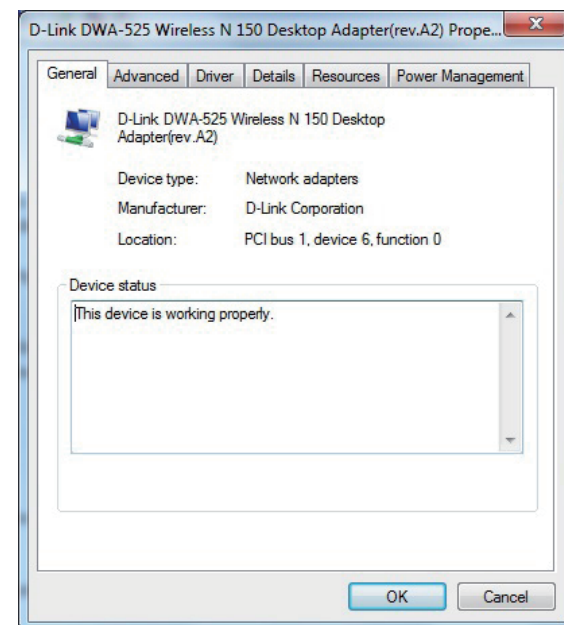
Click the + sign next to **Network Adapters**.

Right-click on **D-Link DWA-525 Wireless Desktop Adapter**.

Select **Properties** to check that the drivers are installed properly.



Look under **Device Status** to check that the device is working properly. Click **OK** to continue.



# Wireless Basics

D-Link wireless products are based on industry standards to provide easy-to-use and compatible high-speed wireless connectivity within your home, business or public access wireless networks. Strictly adhering to the IEEE standard, the D-Link wireless family of products will allow you to securely access the data you want, when and where you want it. You will be able to enjoy the freedom that wireless networking delivers.

A wireless local area network (WLAN) is a cellular computer network that transmits and receives data with radio signals instead of wires. Wireless LANs are used increasingly in both home and office environments, and public areas such as airports, coffee shops and universities. Innovative ways to utilize WLAN technology are helping people to work and communicate more efficiently. Increased mobility and the absence of cabling and other fixed infrastructure have proven to be beneficial for many users.

Wireless users can use the same applications they use on a wired network. Wireless adapter cards used on laptop and desktop systems support the same protocols as Ethernet adapter cards.

Under many circumstances, it may be desirable for mobile network devices to link to a conventional Ethernet LAN in order to use servers, printers or an Internet connection supplied through the wired LAN. A Wireless Router is a device used to provide this link.

## **What is Wireless?**

Wireless or Wi-Fi technology is another way of connecting your computer to the network without using wires. Wi-Fi uses radio frequency to connect wirelessly, so you have the freedom to connect computers anywhere in your home or office network.

## **Why D-Link Wireless?**

D-Link is the worldwide leader and award winning designer, developer, and manufacturer of networking products. D-Link delivers the performance you need at a price you can afford. D-Link has all the products you need to build your network.

## **How does wireless work?**

Wireless works similar to how cordless phones work, through radio signals to transmit data from one point A to point B. But wireless technology has restrictions as to how you can access the network. You must be within the wireless network range area to be able to connect your computer. There are two different types of wireless networks: Wireless Local Area Network (WLAN), and Wireless Personal Area Network (WPAN).

### **Wireless Local Area Network (WLAN)**

In a wireless local area network, a device called an Access Point (AP) connects computers to the network. The access point has a small antenna attached to it, which allows it to transmit data back and forth over radio signals. With an indoor access point as seen in the picture, the signal can travel up to 300 feet. With an outdoor access point the signal can reach out up to 30 miles to serve places like manufacturing plants, industrial locations, college and high school campuses, airports, golf courses, and many other outdoor venues.

## **Wireless Personal Area Network (WPAN)**

Bluetooth is the industry standard wireless technology used for WPAN. Bluetooth devices in WPAN operate in a range up to 30 feet away.

Compared to WLAN the speed and wireless operation range are both less than WLAN, but in return it does not use nearly as much power which makes it ideal for personal devices, such as mobile phones, PDAs, headphones, laptops, speakers, and other devices that operate on batteries.

## **Who uses wireless?**

Wireless technology has become so popular in recent years that almost everyone is using it, whether it's for home, office, business, D-Link has a wireless solution for it.

### **Home**

- Gives everyone at home broadband access
- Surf the web, check email, instant message, and etc
- Gets rid of the cables around the house
- Simple and easy to use

### **Small Office and Home Office**

- Stay on top of everything at home as you would at office
- Remotely access your office network from home
- Share Internet connection and printer with multiple computers
- No need to dedicate office space

## **Where is wireless used?**

Wireless technology is expanding everywhere not just at home or office. People like the freedom of mobility and it's becoming so popular that more and more public facilities now provide wireless access to attract people. The wireless connection in public places is usually called "hotspots".

Using a D-Link wireless desktop adapter with your laptop, you can access the hotspot to connect to the Internet from remote locations like: Airports, Hotels, Coffee Shops, Libraries, Restaurants, and Convention Centers.

Wireless network is easy to setup, but if you're installing it for the first time, it could be quite a task not knowing where to start. That is why we have put together a few setup steps and tips to help you through the process of setting up a wireless network.

## **Tips**

Here are a few things to keep in mind, when you install a wireless network:

### **Centralize your router or Access Point**

Make sure you place the router/access point in a centralized location within your network for the best performance. Try to place the router/access point as high as possible in the room, so the signal gets dispersed throughout your home. If you have a two-story home, you may need a repeater to boost the signal to extend the range.

### **Eliminate Interference**

Place home appliances such as cordless telephones, microwaves, and televisions as far away as possible from the router/access point. This would significantly reduce any interference that the appliances might cause since they operate on same frequency.

### **Security**

Do not let your next-door neighbors or intruders connect to your wireless network. Secure your wireless network by turning on the WPA or WEP security feature on the router. Refer to product manual for detail information on how to set it up.

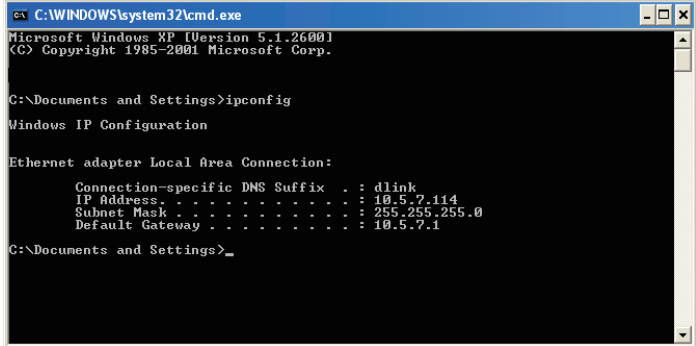
# Networking Basics

## Check your IP address

After you install your new D-Link wireless adapter and have established a wireless connection, by default, the TCP/IP settings should be set to obtain an IP address from a DHCP server (i.e. router) automatically. To verify your IP address, please follow the steps below.

### Windows® XP/2000 Users

- Click on **Start** > **Run**. In the run box, type **cmd** and click **OK**.
- At the prompt, type **ipconfig** and press **Enter**.
- This will display the IP address, subnet mask, and the default gateway of your adapter.



```

C:\WINDOWS\system32\cmd.exe
Microsoft Windows XP (Version 5.1.2600)
(C) Copyright 1985-2001 Microsoft Corp.

C:\Documents and Settings>ipconfig

Windows IP Configuration

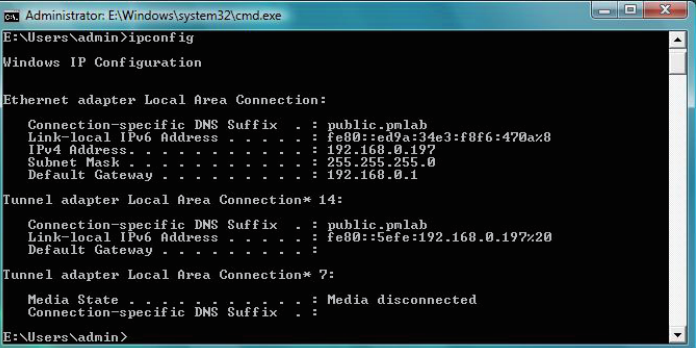
Ethernet adapter Local Area Connection:

    Connection-specific DNS Suffix  . : dlink
    IP Address. . . . . : 10.5.7.114
    Subnet Mask . . . . . : 255.255.255.0
    Default Gateway . . . . . : 10.5.7.1

C:\Documents and Settings>
  
```

### Windows® 7/Windows Vista® Users

- Click **Start** > **All Programs** > **Accessories** > **Command Prompt**. You may need administrative access to run this application.
- For all additional prompt windows inquiring of running the command prompt application, select **Yes**, **OK**, or **Continue**.
- At the prompt, type **ipconfig** and press **Enter**.
- This will display the IP address, subnet mask, and default gateway of your adapter.



```

Administrator: E:\Windows\system32\cmd.exe
E:\Users\admin>ipconfig

Windows IP Configuration

Ethernet adapter Local Area Connection:

    Connection-specific DNS Suffix  . : public.pmlab
    Link-local IPv6 Address . . . . . : fe80::ed9a:3463:f8f6:470a%8
    IPv4 Address. . . . . : 192.168.0.197
    Subnet Mask . . . . . : 255.255.255.0
    Default Gateway . . . . . : 192.168.0.1

Tunnel adapter Local Area Connection* 14:

    Connection-specific DNS Suffix  . : public.pmlab
    Link-local IPv6 Address . . . . . : fe80::5efe:192.168.0.197%20
    Default Gateway . . . . . :

Tunnel adapter Local Area Connection* 7:

    Media State . . . . . : Media disconnected
    Connection-specific DNS Suffix  . :

E:\Users\admin>
  
```

### Windows® 8 Users

- Press the **Windows key** and **R** together. Type **cmd** in the box and click **OK**.
- At the prompt, type **ipconfig** and press **Enter**.
- This will display the IP address, subnet mask, and default gateway of your adapter.

If the address is 0.0.0.0, check your adapter installation, security settings, and the settings on your router. Some firewall software programs may block a DHCP request on newly installed adapters.

# Statically Assign an IP address

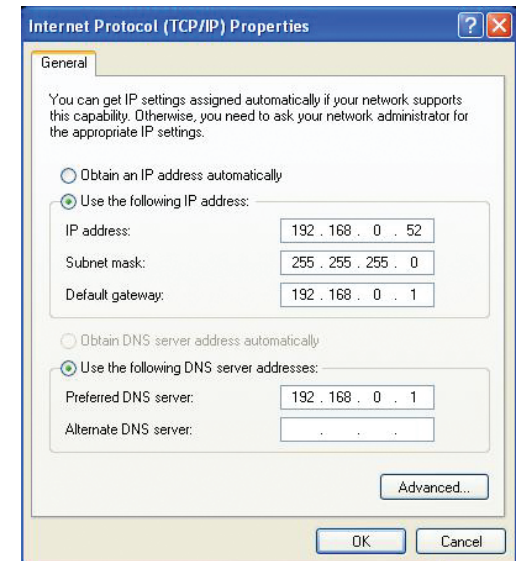
If you are not using a DHCP capable gateway/router, or you need to assign a static IP address, please follow the steps below:

## Windows® XP/2000 Users

- **Windows® XP** - Click on **Start > Control Panel**. Make sure you are in Classic View. Double-click on the **Network Connections** icon.  
**Windows® 2000** – From the desktop, right-click **My Network Places > Properties**.
- Right-click on the **Local Area Connection** which represents your D-Link wireless network adapter (or other adapter) which will be connected to your router.
- Highlight **Internet Protocol (TCP/IP)** and click **Properties**.
- Click **Use the following IP address** and enter an IP address that is on the same subnet as your network or LAN IP address on your router.

**Example:** If the router's LAN IP address is 192.168.0.1, make your IP address 192.168.0.X where X is a number between 2 and 99. Make sure that the number you choose is not in use on the network.

- Set **Default Gateway** the same as the LAN IP address of your router or gateway.
- Set **Primary DNS** the same as the LAN IP address of your router or gateway.
- The **Secondary DNS** is optional (you may enter a DNS server from your ISP).
- Click **OK** to save your settings.

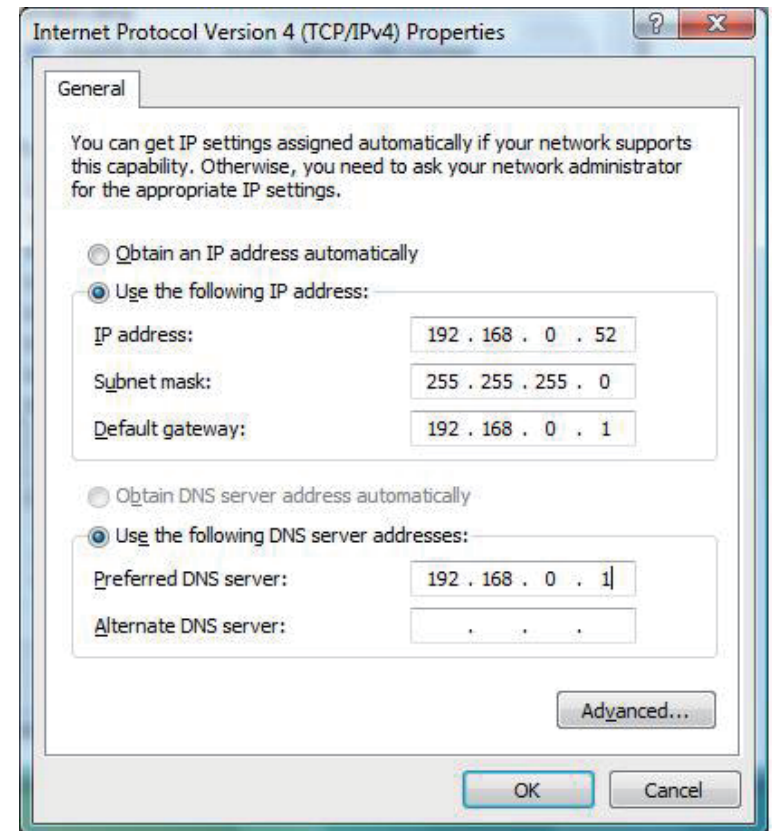


## Windows® 7/Windows Vista® Users

- Click on **Start > Control Panel**. Make sure you are in Classic View. Double-click on the **Network and Sharing Center** icon. Along the left panel in the window, click on **Manage network connections**.
- Right-click on the **Local Area Connection** which represents your D-Link wireless network adapter which will be connected to your network.
- Highlight **Internet Protocol Version 4 (TCP /IPv4)** and click **Properties**.
- Click **Use the following IP address** and enter an IP address that is on the same subnet as your network or LAN IP address on your router or network.

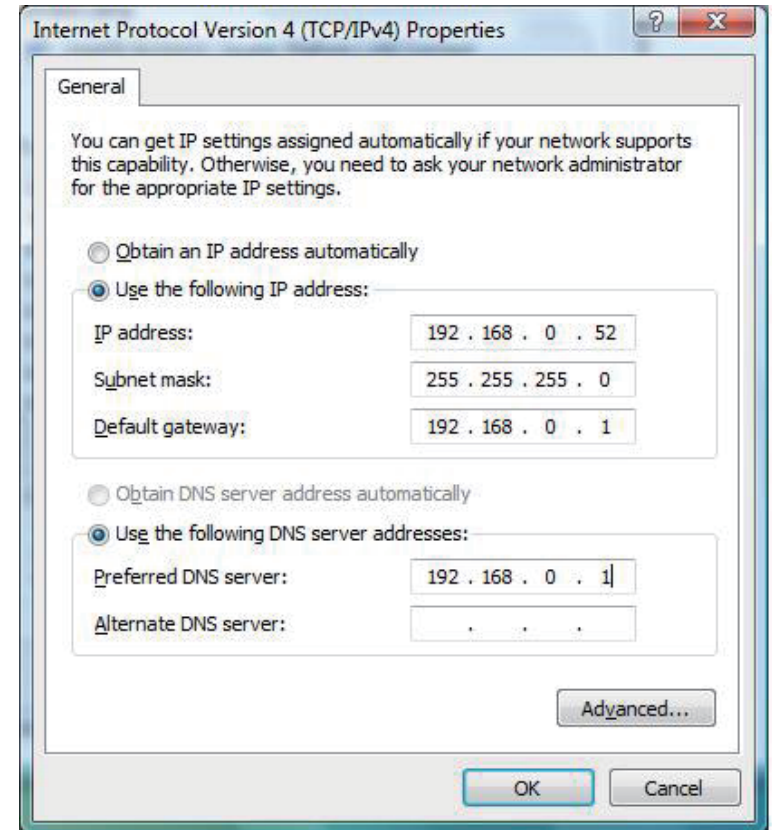
**Example:** If the router's LAN IP address is 192.168.0.1, make your IP address 192.168.0.X where X is a number between 2 and 99. Make sure that the number you choose is not in use on the network.

- Set **Default Gateway** the same as the LAN IP address of your router or gateway.
- Set **Primary DNS** the same as the LAN IP address of your router or gateway.
- The **Secondary DNS** is optional (you may enter a DNS server from your ISP).
- Click **OK** to save your settings.



## Windows® 8 Users

- Press the **Windows** key and then type **IP**. Click **Settings** on the right side and then click **View Network Connections**.
- Right-click on the adapter which represents your D-Link wireless network adapter.
- Highlight **Internet Protocol Version 4 (TCP /IPv4)** and click **Properties**.
- Click **Use the following IP address** and enter an IP address that is on the same subnet as your network or LAN IP address on your router or network.  
  
**Example:** If the router's LAN IP address is 192.168.0.1, make your IP address 192.168.0.X where X is a number between 2 and 99. Make sure that the number you choose is not in use on the network.
- Set **Default Gateway** the same as the LAN IP address of your router or gateway.
- Set **Primary DNS** the same as the LAN IP address of your router or gateway.
- The **Secondary DNS** is optional (you may enter a DNS server from your ISP).
- Click **OK** to save your settings.



# Technical Specifications

## Standards\*

- IEEE 802.11g
- IEEE 802.11n

## Security

- Wi-Fi Protected Access (WPA™ & WPA2™)
- 64/128-bit WEP
- Wi-Fi Protected Setup - PIN & PBC

## Frequency Range

- 2.4GHz to 2.483GHz

## External Antenna Type

- Dipole with detachable reverse SMA connector

## Operating Temperature

- 0 to 40 °C (32 to 104 °F)

## Humidity

- 95% maximum (non-condensing)

## Operation Voltage

- 3.3V
- 5.0V

## Current Consumption

- 400mA at continuous transmit mode
- 240mA at receive mode w/o receiving packets

## Dimensions

- L = 120mm
- W = 40mm
- H = 1.6mm

## Weight

- 49.5g

\*Maximum wireless signal rate derived from IEEE Standard 802.11g and 802.11n specifications. Actual data throughput will vary. Network conditions and environmental factors, including volume of network traffic, building materials and construction, and network overhead, lower actual data throughput rate. Environmental factors will adversely affect wireless signal range.