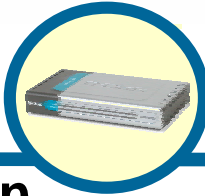


D-Link

Quick Installation Guide

This product can be set up using any current web browser, i.e., Internet Explorer 6 or Netscape Navigator 6.2.3.



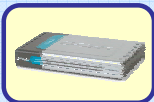
DVG-1402S

VoIP Router

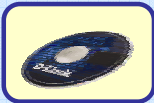
Before You Begin

1. If you purchased this Router to share your high-speed Internet connection with other computers, you must have an established Internet account from an Internet Service Provider (ISP).
2. It's best to use the same computer that is connected to your router for configuring the DVG-1402S VoIP Router. The DVG-1402S acts as a DHCP server and will assign all the necessary IP address information on your network. See the Quick Installation Guide or the Manual on the CD-ROM for setting each network adapter to automatically obtain an IP address.

Check Your Package Contents



- **DVG-1402S VoIP Router**



- **CD-ROM**
containing **Manual and Warranty**



- **Ethernet Cable**
(CAT5 UTP Straight-Through)



- **12V, 1.2A**
Power Adapter

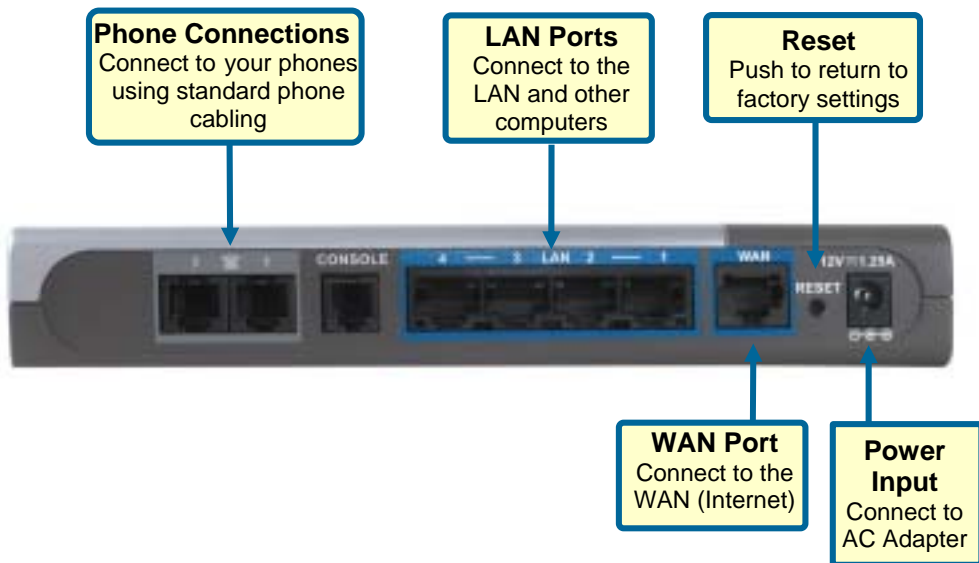


Using a power adapter with a different voltage rating will damage and void the warranty for this product.

If any of the above items is missing, please contact your reseller.

1

Connecting the Router to your Computer



- A.** First, connect the power adapter to the power input at the back panel of the DVG-1402S and then plug the other end of the power adapter to a wall outlet or power strip. On the front of the device, the Power LED will turn ON to indicate proper operation.
- B.** Insert one end of the Ethernet cable into an Ethernet (LAN) port on the back panel of the DVG-1402S and the other end of the cable to an Ethernet Adapter or available Ethernet port on your computer.
- C.** Insert the telephone cable included with the Router into the ADSL port, then connect the cable to your telephone line.
- D.** Check the LED display on the front of the Router to confirm that the connections have been made.

2 Configure IP Settings

To connect to the network, make sure the network adapter in your computer is configured properly. Here's how to configure the network adapter to obtain an IP address automatically for the DVG-1402S VoIP Router.

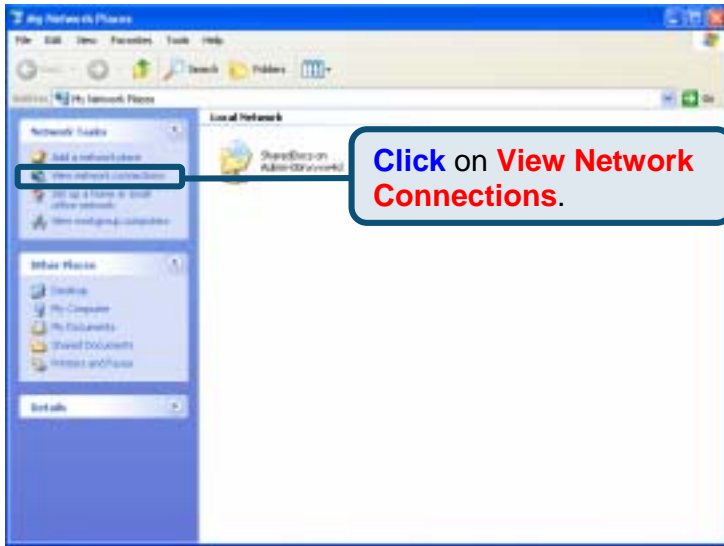
Use the following steps to configure a computer running Windows XP to be a DHCP client.

1. From the **Start** menu on your desktop, go to **My Network Places**.

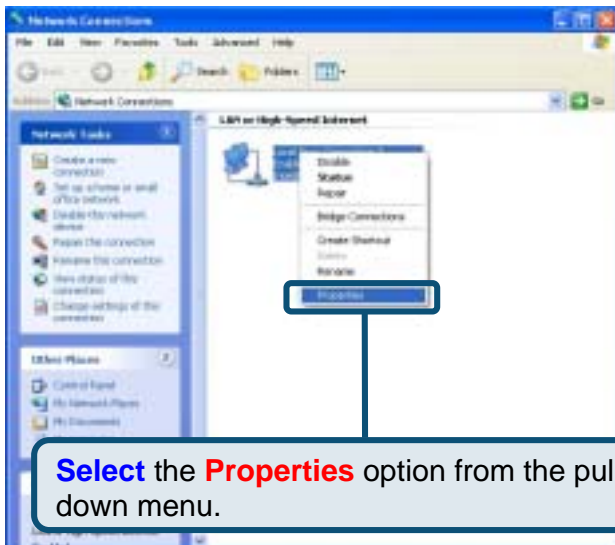


Click on **My Network Places**.

2. Under **Network Tasks**, click **View Network Connections**.



3. Right-click on the **Local Area Connection** icon and select **Properties** from the pull-down menu.



4. In the **General** tab of the **Local Area Connection Properties** menu, highlight **Internet Protocol (TCP/IP)** under "This connection uses the following items:" by clicking on it once. Click on the **Properties** button.

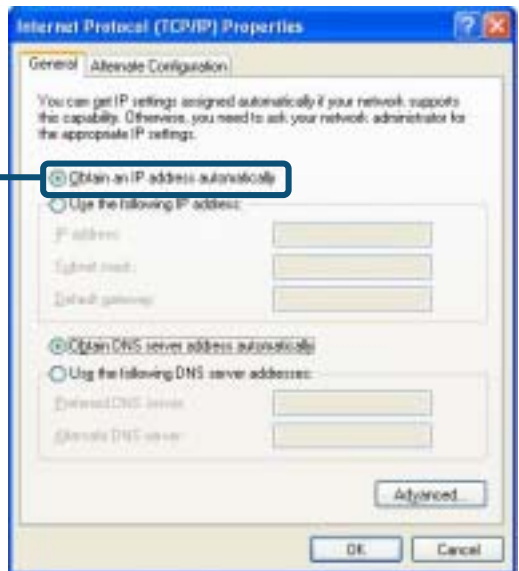


Click on **Internet Protocol (TCP/IP)**.

Click on **Properties**.

5. Select “**Obtain an IP address automatically**” by clicking once in the circle. Click the OK button.

Select **Obtain an IP address automatically** in the Internet Protocol (TCP/IP) Properties window.

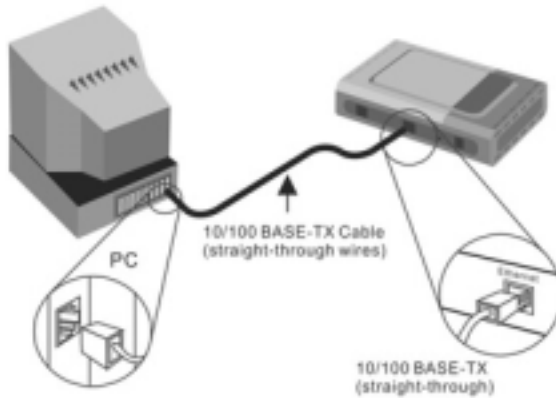


Your computer is now ready to use the Router's DHCP server.



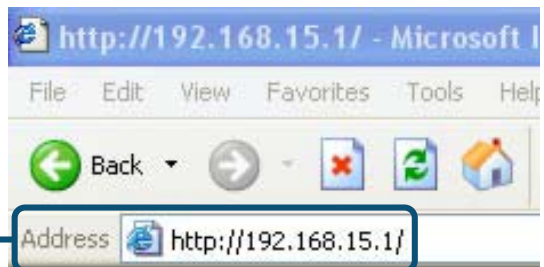
3 Connecting Additional Computers to the DVG-1402S VoIP Router

Using additional Ethernet (CAT5 UTP) cables, connect your Ethernet-equipped computers to the LAN ports on the back panel of the DVG-1402S. When you have completed the steps in this **Quick Installation Guide**, your connected network should look similar to this:



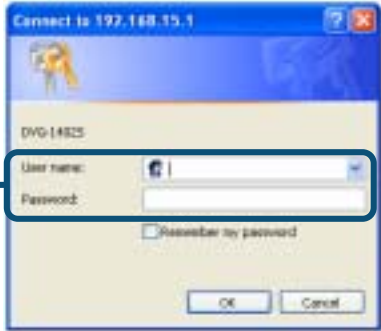
4 Initial Web Configuration

Open your **Web browser** and type "**http://192.168.15.1**" into the URL address box. Then press the **Enter** or **Return** key. The Login page appears.



The Login dialog box appears:

Enter "admin" for the User name and Password and click **OK**.



The Home window appears:



5

Configuring the WAN (Internet) Connection

The **Wizard** will guide you through the 5 steps for setting up your preferred Internet connection. Click the **Next** button to continue.



Click the **Next** button.

Step 1:

Select a time zone from the pull-down menu and click next.



Select a **time zone**.

Click the **Next** button.

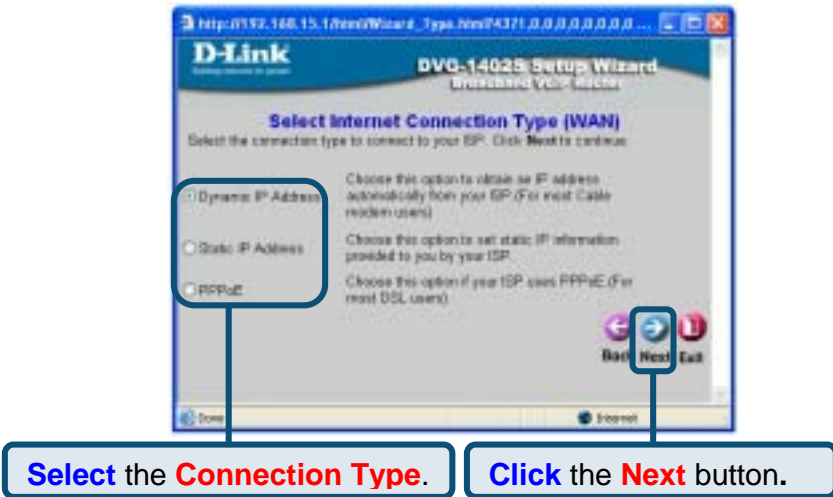
Step 2:

Enter a new password for the DVG-1402S in the **Password** field. Confirm the new password by entering it again into the **Verify Password** field. Click the **Next** button to continue.



Step 3:

Use the radio button to select your preferred Internet connection type. Then click **Next** to continue.



The following are three typical WAN connection examples for **Dynamic IP Address** (DHCP), **Static IP Address**, and **PPPoE** connection types.

Step 4.1:

Select **Dynamic IP Address** if your ISP automatically assigns you an IP address. This is the most common way of connecting the DVG-1402S to another modem, such as a Cable modem.



Enter the host name, if required, in the **Host Name** field. If you are using a Cable modem to make the connection to your ISP's WAN (Internet), click the **Clone MAC Address** button. This will copy the MAC address of your PC's network adapter to the DVG-G1402S. The Cable modem will then recognize the DVG-G1402S and make a valid connection. Click the **Next** button to continue.

Step 4.2:

Select **Static IP Address** if your ISP provided you with IP address information that will not change. You will need your ISP to provide you with the IP address information about your Internet account, if your ISP statically assigns an IP address to you.



Enter the provided IP address in the **WAN IP Address** field. Enter the corresponding subnet mask in the **WAN Subnet Mask** field. Enter the IP address of your ISP's gateway in the **WAN Gateway Address** field. Enter the IP address of a Domain Name Server (DNS) in the **Primary DNS Address** field. Click the **Next** button to continue.

Step 4.3:

Select **PPPoE** if your ISP uses the Point-to-Point over Ethernet (PPPoE) protocol to make the connection. This is the most common connection type for DSL users.



Enter the User Name for your account in the **User Name** field. Enter the Password for your account in the **Password** field. Confirm the Password by entering it again in the **Retype Password** field. Click the **Next** button to continue.

Step 5:

After selecting your internet connection type and making the necessary configurations, click the **Restart** button to save the settings and restart the router.



Technical Support

You can find software updates and user documentation on the D-Link websites.

D-Link provides free technical support for customers within Canada, the United Kingdom, and Ireland.

Customers can contact D-Link technical support through our websites, or by phone.

For Customers within The United Kingdom & Ireland:

D-Link UK & Ireland Technical Support over the Telephone:

08456 12 0003 (United Kingdom)

+44 8456 12 0003 (Ireland)

Lines Open

8.00am-10.00pm Mon-Fri

10.00am-7.00pm Sat & Sun

D-Link UK & Ireland Technical Support over the Internet:

<http://www.dlink.co.uk>

<ftp://ftp.dlink.co.uk>

For Customers within Canada:

