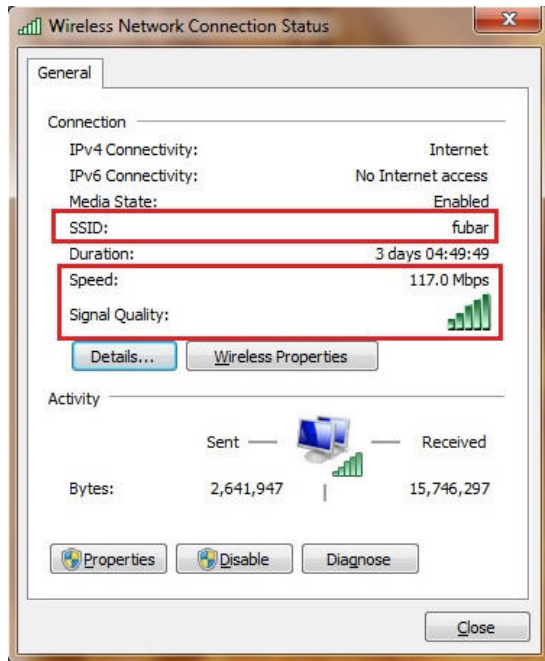


## How to get 802.11n 300Mb speed rate in the DSR-Series

### Problem Description:

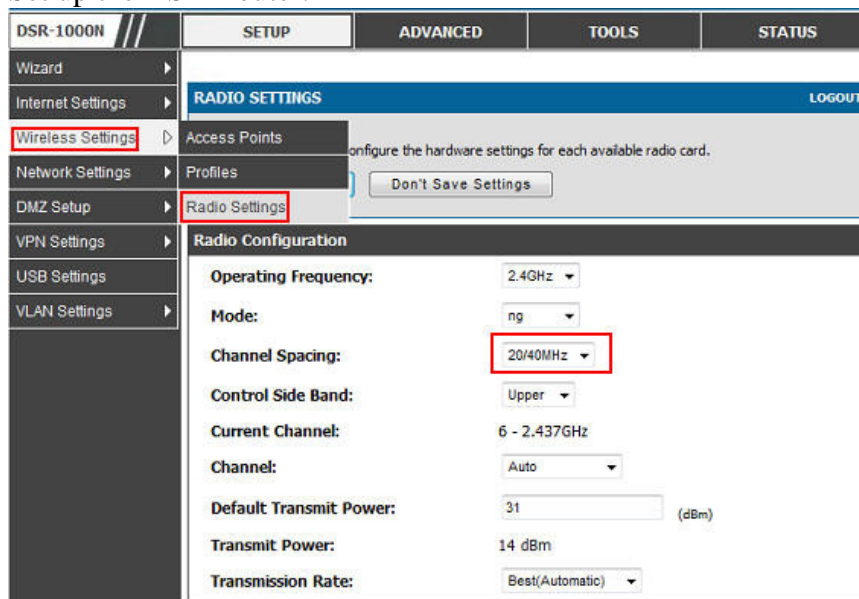
In some cases, you might see the speed rate not reach the 300Mb with the 802.11n default setting, like below example.

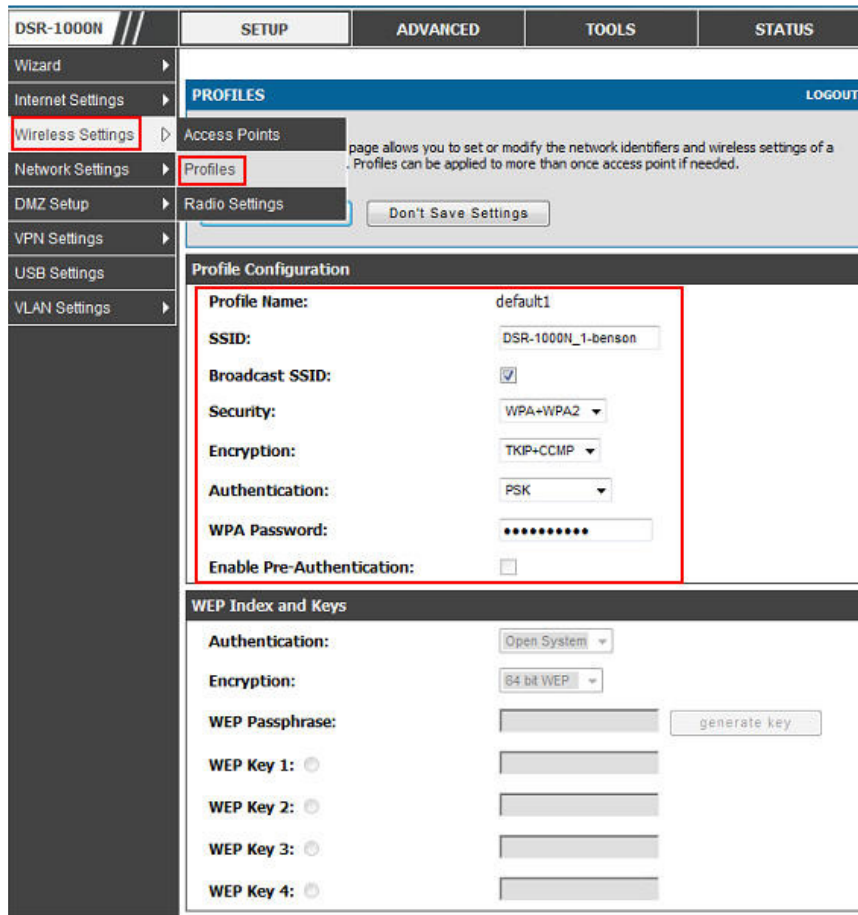


### Solution:

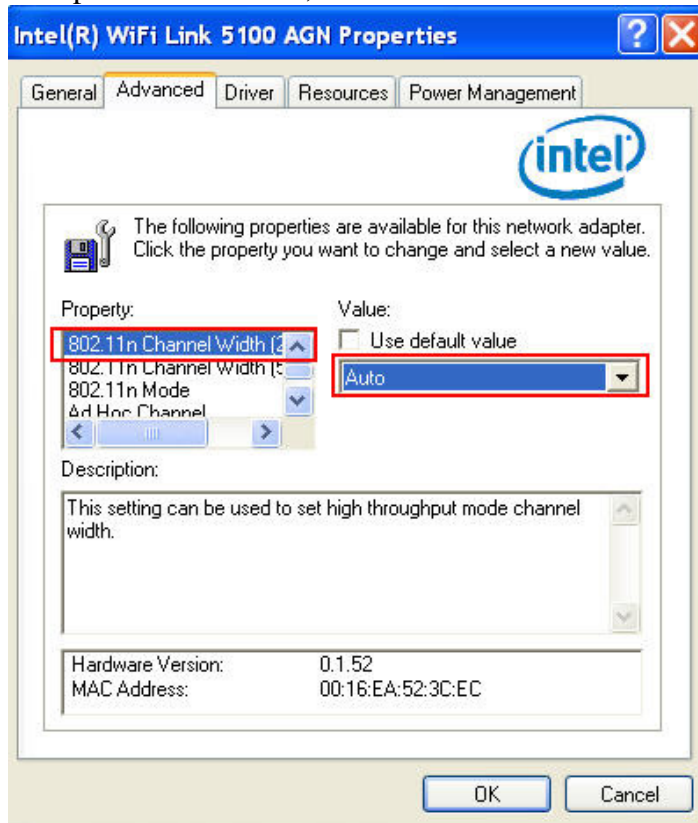
We can modify some settings in the Wireless NIC and DSR to fix this problem. The following example is for your reference.

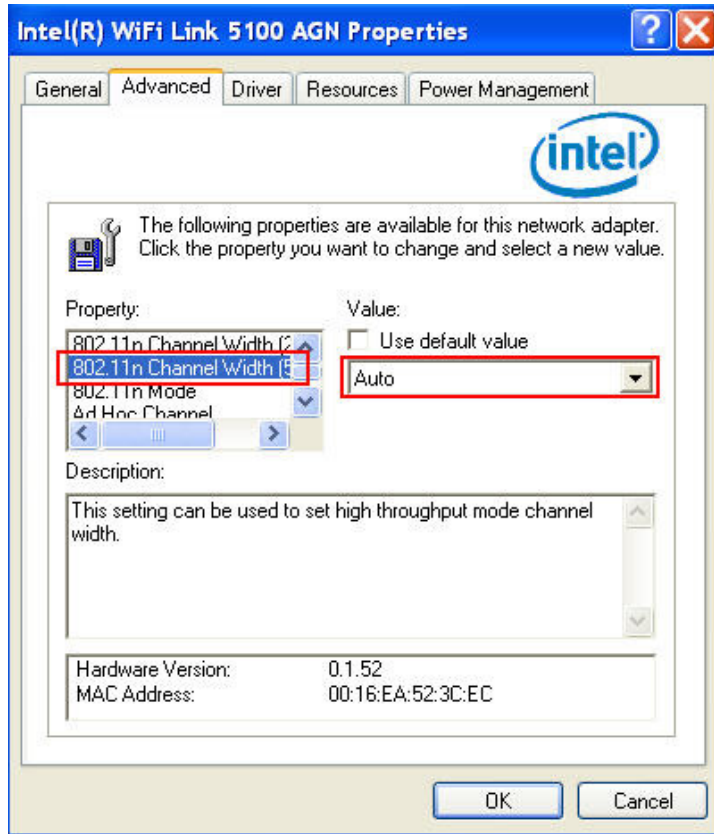
#### 1. Set up the DSR Router.





2. Set up th Wireless NIC, we use Intel 5100 as a reference.





3. Check Result:

