

# Grundlegende Informationen zur Einrichtung des SSLVPN beim DSR-1000N/DSR-500N(FW 1.03B27).

## Szenario:

*Benutzer möchte aus dem Ausland eine verschlüsselte Verbindung über das Internet in sein Netzwerk herstellen (z.B. um auf lokale Netzwerkfreigaben zugreifen zu können oder um Netzwerkblockaden umgehen zu können).*

*Benutzer möchte auf seinem PC kein VPN Programm installieren.*

Für weitergehende Funktionalitäten des SSLVPN schlagen Sie bitte im Handbuch nach.

*Mit \* gekennzeichnete Werte sind bereits werkseitig vorhanden.*

- 1.) WAN Status prüfen und ggfls. Internetverbindung herstellen

### WAN1 Information

|                               |   |
|-------------------------------|---|
| <b>MAC Address:</b>           | 00:18:E7:CD:69:52                       |
| <b>IPv4 Address:</b>          | 192.168.30.2 / 255.255.255.252          |
| <b>IPv6 Address:</b>          | fe80::218:e7ff:fe8d:6952 / 64           |
| <b>Wan State:</b>             | UP                                      |
| <b>NAT (IPv4 only):</b>       | Enabled                                 |
| <b>IPv4 Connection Type:</b>  | Static IP                               |
| <b>IPv6 Connection Type:</b>  | Dynamic IP (DHCPv6)                     |
| <b>IPv4 Connection State:</b> | Connected                               |
| <b>IPv6 Connection State:</b> | Not Yet Connected                       |
| <b>Link State:</b>            | LINK UP                                 |
| <b>WAN Mode:</b>              | Use only single WAN port: Dedicated WAN |
| <b>Gateway:</b>               | 192.168.30.1                            |
| <b>Primary DNS:</b>           | 192.168.30.1                            |
| <b>Secondary DNS:</b>         | 192.168.10.1                            |
| <b>Primary DNS(IPv6):</b>     |   |
| <b>Secondary DNS(IPv6):</b>   |   |

---

## 2.) Remote Management einschalten

Wählen Sie „Tools“ - „Admin“ – „Remote Management“

Product Page: DSR-1000N Hardware Version: A1 Firmware Version: 1.03B38\_WW

**D-Link**

| DSR-1000N        | SETUP             | ADVANCED | TOOLS | STATUS | HELP  |
|------------------|-------------------|----------|-------|--------|---|
| Admin            | Admin Settings    |          |       |        | <b>Helpful Hints...</b><br>The System Name identifies the router for node identification and remote logging.<br><a href="#">More...</a> |
| Date and Time    | Remote Management |          |       |        |   |
| Log Settings     | SNMP              |          |       |        |   |
| System           | SNMP System Info  |          |       |        |   |
| Firmware         |                   |          |       |        |   |
| Firmware via USB |                   |          |       |        |   |
| Dynamic DNS      |                   |          |       |        |   |
| System Check     |                   |          |       |        |   |
| Schedules        |                   |          |       |        |   |
|                  |                   |          |       |        |   |

**UNIFIED SERVICES ROUTER**

Product Page: DSR-1000N Hardware Version: A1 Firmware Version: 1.03B38\_WW

**D-Link**

| DSR-1000N        | SETUP   | ADVANCED | TOOLS | STATUS | HELP  |
|------------------|---|----------|-------|--------|---|
| Admin            | <b>REMOTE MANAGEMENT</b> <span style="float: right;">LOGOUT</span>  |          |       |        | <b>Helpful Hints...</b><br>Both HTTPS and telnet access can be restricted to a subset of IP addresses. Administrator and Guest users are permitted to login to the GUI, and User Login Policies will allow remote management over HTTPS to take place as configured.<br><a href="#">More...</a> |
| Date and Time    | From this page a user can configure the remote management feature. This feature can be used to manage the box remotely from WAN side. |          |       |        |   |
| Log Settings     | <input type="button" value="Save Settings"/> <input type="button" value="Don't Save Settings"/>                                       |          |       |        |   |
| System           | <b>Remote Management Enable</b>   |          |       |        |   |
| Firmware         | <b>Enable Remote Management:</b> <input checked="" type="checkbox"/>  |          |       |        |   |
| Firmware via USB | <b>Access Type:</b> All IP Addresses  |          |       |        |   |
| Dynamic DNS      | <b>From:</b>  |          |       |        |   |
| System Check     | <b>To:</b>  |          |       |        |   |
| Schedules        | <b>IP Address:</b>  |          |       |        |   |
|                  | <b>Port Number:</b> 443   |          |       |        |   |

**UNIFIED SERVICES ROUTER**

Setzen Sie das Häkchen bei „Enable Remote Management“ und lassen Sie die restlichen Einstellung auf den Standardwerten und klicken Sie zum Speichern auf „Save Settings“. Für

**3.) „SSLVPN“ für die gewünschte VPN-Verbindung anlegen.**

Wählen Sie „VPN Settings“ - „SSL VPN Server“ – „Portal Layouts“

Product Page: DSR-1000N Hardware Version: A1 Firmware Version: 1.03B12\_WW

**D-Link**

DSR-1000N // SETUP ADVANCED TOOLS STATUS HELP

Wizard ▾

Internet Settings ▾ **INTERNET CONNECTION** LOGOUT

Wireless Settings ▾

Network Settings ▾

DMZ Setup ▾

VPN Settings ▾ IPsec ▾

USB Settings ▾ PPTP ▾

VLAN Settings ▾ L2TP ▾

SSL VPN Server ▾ Portal Layouts ▾

SSL VPN Client ▾ SSL VPN Policies ▾

Manual Internet Connection Setup ▾

UNIFIED SERVICES ROUTER

Product Page: DSR-1000N Hardware Version: A1 Firmware Version: 1.03B12\_WW

**D-Link**

DSR-1000N // SETUP ADVANCED TOOLS STATUS HELP

Wizard ▾

Internet Settings ▾

Wireless Settings ▾

Network Settings ▾

DMZ Setup ▾

VPN Settings ▾

USB Settings ▾

VLAN Settings ▾

Operation succeeded

**PORTAL LAYOUTS** LOGOUT

The table lists the SSL portal layouts configured for this device and allows several operations on the portal layouts.

List of of Layouts

| <input type="checkbox"/> | Layout Name | Use Count | Portal URL                         |
|--------------------------|-------------|-----------|------------------------------------|
| <input type="checkbox"/> | SSLVPN*     | 1         | https://192.168.30.2/portal/SSLVPN |
| <input type="checkbox"/> | DLink       | 0         | https://192.168.30.2/portal/DLink  |

Edit Delete Set Default Add

UNIFIED SERVICES ROUTER

Klicken Sie auf Add um eine neues VPN anzulegen oder bearbeiten (Edit) Sie das bereits werkseitig angelegte SSLVPN\*.

Product Page: DSR-1000N Hardware Version: A1 Firmware Version: 1.03B12\_VW

**D-Link**

DSR-1000N // SETUP ADVANCED TOOLS STATUS HELP

Wizard  
Internet Settings  
Wireless Settings  
Network Settings  
DMZ Setup  
VPN Settings  
USB Settings  
VLAN Settings

**PORTAL LAYOUT CONFIGURATION** LOGOUT

This page allows you to add a new portal layout or edit the configuration of an existing portal layout. The details will then be displayed in the List of Portal Layouts table on the SSL VPN Server > Portal Layouts page under the VPN menu.

Save Settings Don't Save Settings

**Portal Layout and Theme Name**

Portal Layout Name: DLink  
 Portal Site Title (Optional): DLink-DCE  
 Banner Title (Optional): DLink-DCE  
 Banner Message (Optional): Welcome\_to\_DSR-1000N\_SSLVPN  
 Display banner message on login page:   
 HTTP meta tags for cache control (recommended):   
 ActiveX web cache cleaner:

**SSL VPN Portal Pages to Display**

VPN Tunnel page:   
 Port Forwarding:

Helpful Hints...  
 When remote users want to access the private network through an SSL tunnel (either using the Port Forwarding or VPN tunnel service), they login through the Client Portal. This portal provides the authentication fields to provide the appropriate access levels and privileges as determined by the router.  
 More...

UNIFIED SERVICES ROUTER

Bitte geben Sie wie im Beispiel angegeben, die Beschreibung für den jeweiligen Service ein und klicken Sie zum Speichern auf „Save Settings“ (Derzeit werden leider keine Leerzeichen in der Banner-Meldung unterstützt.)

Product Page: DSR-1000N Hardware Version: A1 Firmware Version: 1.03B12\_VW

**D-Link**

DSR-1000N // SETUP ADVANCED TOOLS STATUS HELP

Wizard  
Internet Settings  
Wireless Settings  
Network Settings  
DMZ Setup  
VPN Settings  
USB Settings  
VLAN Settings

Operation succeeded

**PORTAL LAYOUTS** LOGOUT

The table lists the SSL portal layouts configured for this device and allows several operations on the portal layouts.

**List of of Layouts**

| <input type="checkbox"/> | Layout Name | Use Count | Portal URL                         |
|--------------------------|-------------|-----------|------------------------------------|
| <input type="checkbox"/> | SSLVPN*     | 1         | https://192.168.30.2/portal/SSLVPN |
| <input type="checkbox"/> | DLink       | 0         | https://192.168.30.2/portal/DLink  |

Edit Delete Set Default Add

Helpful Hints...  
 The router allows you to create a custom page for remote SSL VPN users that is presented upon authentication. Login instructions, available services, and other usage details that are specific to a domain are useful to present on the authentication portal. Portals are assigned to the user domain.  
 More...

UNIFIED SERVICES ROUTER

In der Übersicht sehen Sie den/die von Ihnen angelegten SSLVPN(s) inkl. des Standard VPN.

#### 4.) Konfigurieren des SSLVPN Clientbereiches

Product Page: DSR-1000N Hardware Version: A1 Firmware Version: 1.03B12\_WW

**D-Link**

| DSR-1000N   | SETUP  | ADVANCED | TOOLS | STATUS | HELP  |
|---|--|----------|-------|--------|---|
| <ul style="list-style-type: none"> <li>Wizard ▶</li> <li>Internet Settings ▶</li> <li>Wireless Settings ▶</li> <li>Network Settings ▶</li> <li>DMZ Setup ▶</li> <li>VPN Settings ▶               <ul style="list-style-type: none"> <li>IPsec ▶</li> <li>PPTP ▶</li> <li>L2TP ▶</li> <li>SSL VPN Server ▶</li> <li>SSL VPN Client ▶</li> <li>Secondary DNS Server ▶</li> <li>Client Address Range ▶</li> <li>Client Address Range End ▶</li> <li>LCP Timeout: ▶</li> </ul> </li> <li>USB Settings ▶</li> <li>VLAN Settings ▶</li> </ul> | <p><b>SSL VPN CLIENT</b> <span style="float: right;">LOGOUT</span></p> <p>An SSL VPN tunnel client provides a point-to-point connection between the browser-side machine and this device. When a SSL VPN client is launched from the user portal, a "network adapter" with an IP address, DNS and WINS settings is automatically created, which allows local applications to talk to services on the private network without any special network configuration on the remote SSL VPN client machine.</p> <p style="text-align: right;"><input type="button" value="Don't Save Settings"/></p> <hr/> <p><b>Client Address Range</b> : <input type="text" value="192.168.251.1"/> - <input type="text" value="192.168.251.254"/></p> <p><b>Client Address Range End</b> : <input type="text" value="192.168.251.254"/></p> <p><b>LCP Timeout</b> : <input type="text" value="60"/> (Seconds)</p> |          |       |        | <p><b>Helpful Hints...</b></p> <p>An SSL VPN tunnel client provides a point-to-point connection between the browser-side machine and this router.</p> <p>When a SSL VPN client is launched from the user portal, a "network adapter" with an IP address from the corporate subnet, DNS and WINS settings is automatically created. The IP addresses of the client's network interfaces (Ethernet, Wireless, etc.) cannot be identical to the router's IP address or a server on the corporate LAN that is being accessed through the SSL VPN tunnel.</p> <p><a href="#">More...</a></p> |

UNIFIED SERVICES ROUTER

Klicken Sie auf SSLVPN um die Clienteneinstellungen anzupassen.

Product Page: DSR-1000N Hardware Version: A1 Firmware Version: 1.03B12\_VW

---

**D-Link**<sup>®</sup>

| DSR-1000N  | SETUP   | ADVANCED | TOOLS | STATUS | HELP   |
|--|---|----------|-------|--------|--|
| <ul style="list-style-type: none"> <li>Wizard ▶</li> <li>Internet Settings ▶</li> <li>Wireless Settings ▶</li> <li>Network Settings ▶</li> <li>DMZ Setup ▶</li> <li>VPN Settings ▶</li> <li>USB Settings ▶</li> <li>VLAN Settings ▶</li> </ul> | <div style="background-color: #0070C0; color: white; padding: 2px; text-align: center; font-weight: bold;">SSL VPN CLIENT <span style="float: right;">LOGOUT</span></div> <p style="font-size: small; margin-top: 5px;">An SSL VPN tunnel client provides a point-to-point connection between the browser-side machine and this device. When a SSL VPN client is launched from the user portal, a "network adapter" with an IP address, DNS and WINS settings is automatically created, which allows local applications to talk to services on the private network without any special network configuration on the remote SSL VPN client machine.</p> <p style="text-align: center; margin-top: 5px;"> <input type="button" value="Save Settings"/>    <input type="button" value="Don't Save Settings"/> </p> <hr/> <div style="background-color: #333; color: white; padding: 2px; font-weight: bold;">Client IP Address Range</div> <p><b>Enable Split Tunnel Support:</b> <input type="checkbox"/></p> <p><b>DNS Suffix (Optional) :</b> <input type="text"/></p> <p><b>Primary DNS Server (Optional) :</b> <input type="text"/></p> <p><b>Secondary DNS Server (Optional) :</b> <input type="text"/></p> <p><b>Client Address Range Begin:</b> <input type="text" value="192.168.200.1"/></p> <p><b>Client Address Range End:</b> <input type="text" value="192.168.200.254"/></p> <p><b>LCP Timeout:</b> <input type="text" value="60"/> (Seconds)</p> |          |       |        | <p><b>Helpful Hints...</b></p> <p style="font-size: x-small; margin-top: 5px;">An SSL VPN tunnel client provides a point-to-point connection between the browser-side machine and this router. When a SSL VPN client is launched from the user portal, a "network adapter" with an IP address from the corporate subnet, DNS and WINS settings is automatically created. The IP addresses of the client's network interfaces (Ethernet, Wireless, etc.) cannot be identical to the router's IP address or a server on the corporate LAN that is being accessed through the SSL VPN tunnel.</p> <p style="color: #0070C0; font-size: x-small; margin-top: 5px;"><a href="#">More...</a></p> |

UNIFIED SERVICES ROUTER

Passen Sie die Clienteneinstellungen Ihren Bedürfnissen an (standardmäßig ist als Client-IP-Bereich 192.168.251.1-254 eingestellt) und klicken Sie zum Speichern auf „Save Settings“ (Bitte verwenden Sie nicht den LAN IP Adressbereich des DSR-1000N.)

## 5.) Einrichten der SSLVPN Domäne

Product Page: DSR-1000N Hardware Version: A1 Firmware Version: 1.03B12\_WW

**D-Link**

DSR-1000N // SETUP ADVANCED TOOLS STATUS HELP

Application Rules ▶  
Website Filter ▶  
Firewall Settings ▶  
Wireless Settings ▶  
Advanced Network ▶  
Routing ▶  
Certificates  
Users ▶  
IP/MAC Binding  
IPv6 ▶  
Radius Settings  
Switch Settings

**DOMAINS** LOGOUT

This page shows the list of added domains to the router. The user can add, delete and edit the domains also.

**List of Domains**

| <input type="checkbox"/> | Domain Name | Authentication Type | Portal Layout Name |
|--------------------------|-------------|---------------------|--------------------|
| <input type="checkbox"/> | SSLVPN *    | Local User Database | SSLVPN             |

Get Users DB Edit Delete Add

**Helpful Hints...**  
The Domain determines the authentication method for a VPN or GUI user. For SSL VPN connections, the domain sets the portal layout and corresponding SSL VPN features. You must create a Domain first, and then a new Group can be created and assigned to the Domain. The last step is to add specific SSL VPN users to an already-configured Group.  
[More...](#)

**UNIFIED SERVICES ROUTER**

Klicken Sie auf Add um eine neues Domäne anzulegen oder bearbeiten (Edit) Sie die bereits Werkseitig angelegte SSLVPN\* Domäne.

The screenshot shows the D-Link web interface for a DSR-1000N router. The top navigation bar includes tabs for SETUP, ADVANCED, TOOLS, STATUS, and HELP. The left sidebar contains a menu with items like Application Rules, Website Filter, Firewall Settings, Wireless Settings, Advanced Network, Routing, Certificates, Users, IP/MAC Binding, IPv6, Radius Settings, and Switch Settings. The main content area is titled 'DOMAINS' and includes a 'LOGOUT' link. Below this, there is a 'Domains Configuration' section with the following fields:

- Domain Name: DLink
- Authentication Type: Local User Database
- Select Portal: DLink
- Authentication Server 1: [Empty]
- Authentication Server 2: [Empty] (Optional)
- Authentication Server 3: [Empty] (Optional)
- Timeout: 480 (Seconds)
- Retries: 5
- Authentication Secret: [Empty]
- Authentication Secret2: [Empty]
- Workgroup: [Empty]
- Second Workgroup: [Empty] (Optional)
- LDAP Base DN: [Empty]
- Second LDAP Base DN: [Empty] (Optional)
- Active Directory Domain: [Empty]
- Second Active Directory Domain: [Empty] (Optional)

Buttons for 'Save Settings' and 'Don't Save Settings' are visible. A 'Helpful Hints...' section on the right provides additional information.

Im Beispiel wurde der gleiche Name für die Domäne verwendet, um die Übersichtlichkeit zu erhöhen. Gleichzeitig wird die „Local User Database“ unter Authentication Type ausgewählt. (Sollten Sie eine der anderen Authentifizierungsarten verwenden, bitte entsprechend auswählen.) Als Portal wurde hier „DLink“ ausgewählt, welches in den vorangegangenen Schritten angelegt wurde. Die anderen Einstellungen werden in diesem Beispiel nicht verändert. Klicken Sie auf den Button „Save Settings“ um die Eingaben zu übernehmen.



# D-Link<sup>®</sup>

| DSR-1000N   | SETUP               | ADVANCED            | TOOLS              | STATUS | HELP  |                 |  |  |  |  |             |                     |                    |                          |          |                     |        |                          |       |                     |
|---|---------------------|---------------------|--------------------|--------|---|-----------------|--|--|--|--|-------------|---------------------|--------------------|--------------------------|----------|---------------------|--------|--------------------------|-------|---------------------|
| <ul style="list-style-type: none"> <li>Application Rules ▶</li> <li>Website Filter ▶</li> <li>Firewall Settings ▶</li> <li>Wireless Settings ▶</li> <li>Advanced Network ▶</li> <li>Routing ▶</li> <li>Certificates</li> <li>Users ▶</li> <li>IP/MAC Binding</li> <li>IPv6 ▶</li> <li>Radius Settings</li> <li>Switch Settings</li> </ul>   | Operation succeeded |                     |                    |        | <p><b>Helpful Hints...</b></p> <p>The Domain determines the authentication method for a VPN or GUI user. For SSL VPN connections, the domain sets the portal layout and corresponding SSL VPN features. You must create a Domain first, and then a new Group can be created and assigned to the Domain. The last step is to add specific SSL VPN users to an already-configured Group.</p> <p><a href="#">More...</a></p> |                 |  |  |  |  |             |                     |                    |                          |          |                     |        |                          |       |                     |
| <div style="background-color: #0056b3; color: white; padding: 2px; display: flex; justify-content: space-between;"> <span><b>DOMAINS</b></span> <span>LOGOUT</span> </div> <p style="margin: 5px 0;">This page shows the list of added domains to the router. The user can add, delete and edit the domains also.</p> <table border="1" style="width: 100%; border-collapse: collapse; background-color: #f2f2f2;"> <thead> <tr> <th colspan="4" style="background-color: #333; color: white;">List of Domains</th> </tr> <tr> <th style="width: 5%;"></th> <th style="width: 30%;">Domain Name</th> <th style="width: 30%;">Authentication Type</th> <th style="width: 35%;">Portal Layout Name</th> </tr> </thead> <tbody> <tr> <td style="text-align: center;"><input type="checkbox"/></td> <td>SSLVPN *</td> <td>Local User Database</td> <td>SSLVPN</td> </tr> <tr> <td style="text-align: center;"><input type="checkbox"/></td> <td>DLink</td> <td>Local User Database</td> <td>DLink</td> </tr> </tbody> </table> <div style="text-align: center; margin-top: 5px;"> <input type="button" value="Edit"/> <input type="button" value="Delete"/> <input type="button" value="Add"/> </div> |                     |                     |                    |        |   | List of Domains |  |  |  |  | Domain Name | Authentication Type | Portal Layout Name | <input type="checkbox"/> | SSLVPN * | Local User Database | SSLVPN | <input type="checkbox"/> | DLink | Local User Database |
| List of Domains   |                     |                     |                    |        |   |                 |  |  |  |  |             |                     |                    |                          |          |                     |        |                          |       |                     |
|   | Domain Name         | Authentication Type | Portal Layout Name |        |   |                 |  |  |  |  |             |                     |                    |                          |          |                     |        |                          |       |                     |
| <input type="checkbox"/>  | SSLVPN *            | Local User Database | SSLVPN             |        |   |                 |  |  |  |  |             |                     |                    |                          |          |                     |        |                          |       |                     |
| <input type="checkbox"/>  | DLink               | Local User Database | DLink              |        |   |                 |  |  |  |  |             |                     |                    |                          |          |                     |        |                          |       |                     |

UNIFIED SERVICES ROUTER

In der Übersicht sehen Sie den/die von Ihnen angelegten Domänen für das SSLVPN inkl. der standardmäßig Angelegten Domäne SSLVPN.

## 6.) Anlegen der Benutzerkonten für das SSLVPN

Product Page: DSR-1000N Hardware Version: A1 Firmware Version: 1.03B12\_VW

**D-Link**

DSR-1000N // SETUP **ADVANCED** TOOLS STATUS HELP

Application Rules ▾  
Website Filter ▾  
Firewall Settings ▾  
Wireless Settings ▾  
Advanced Network ▾  
Routing ▾  
Certificates ▾  
Users ▾  
IP/MAC Binding ▾  
IPv6 ▾  
Radius Settings ▾  
Switch Settings ▾

**USERS** LOGOUT

This page shows a list of available users in the system. A user can add, delete and edit the users also. This page can also be used for setting policies on users.

**List of Users**

| <input type="checkbox"/> | User Name    | Group  | Type          | Authentication Domain | Login Status          |
|--------------------------|--------------|--------|---------------|-----------------------|-----------------------|
| <input type="checkbox"/> | admin *      | SSLVPN | Administrator | Local User Database   | Enabled (LAN and WAN) |
| <input type="checkbox"/> | Get Users DB | SSLVPN | Guest         | Local User Database   | Disabled              |
| <input type="checkbox"/> | admin *      | SSLVPN | Administrator | Local User Database   | Enabled (LAN and WAN) |
| <input type="checkbox"/> | guest *      | SSLVPN | Guest         | Local User Database   | Disabled              |

Domains: DLink SSL VPN User Local User Database Enabled (LAN and WAN)

Groups: Edit Delete Add

Users: Login Policies Policies By Browsers Policies By IP

**UNIFIED SERVICES ROUTER**

**Helpful Hints...**

Authentication of the users (IPsec, SSL VPN, or GUI) is done by the router using either a local database on the router or external authentication servers (i.e. LDAP or RADIUS). User level policies can be specified by browser, IP address of the host, and whether the user can login to the router's GUI in addition to the SSL VPN portal

[More...](#)

Product Page: DSR-1000N Hardware Version: A1 Firmware Version: 1.03B12\_VW

**D-Link**

DSR-1000N // SETUP **ADVANCED** TOOLS STATUS HELP

Application Rules ▾  
Website Filter ▾  
Firewall Settings ▾  
Wireless Settings ▾  
Advanced Network ▾  
Routing ▾  
Certificates ▾  
Users ▾  
IP/MAC Binding ▾  
IPv6 ▾  
Radius Settings ▾  
Switch Settings ▾

Operation succeeded

**USERS** LOGOUT

This page shows a list of available users in the system. A user can add, delete and edit the users also. This page can also be used for setting policies on users.

**List of Users**

| <input type="checkbox"/> | User Name | Group  | Type          | Authentication Domain | Login Status          |
|--------------------------|-----------|--------|---------------|-----------------------|-----------------------|
| <input type="checkbox"/> | admin *   | SSLVPN | Administrator | Local User Database   | Enabled (LAN and WAN) |
| <input type="checkbox"/> | guest *   | SSLVPN | Guest         | Local User Database   | Disabled              |

Edit Delete Add

Login Policies Policies By Browsers Policies By IP

**UNIFIED SERVICES ROUTER**

**Helpful Hints...**

Authentication of the users (IPsec, SSL VPN, or GUI) is done by the router using either a local database on the router or external authentication servers (i.e. LDAP or RADIUS). User level policies can be specified by browser, IP address of the host, and whether the user can login to the router's GUI in addition to the SSL VPN portal

[More...](#)

Klicken Sie auf Add um einen neuen Benutzer anzulegen oder bearbeiten (Edit) Sie einen bereits werkseitig angelegten Benutzer.

Product Page: DSR-1000N Hardware Version: A1 Firmware Version: 1.03B12\_WW

**D-Link**

DSR-1000N // SETUP ADVANCED TOOLS STATUS HELP

Application Rules Website Filter Firewall Settings Wireless Settings Advanced Network Routing Certificates Users IP/MAC Binding IPv6 Radius Settings Switch Settings

**USERS CONFIGURATION** LOGOUT

This page allows a user to add new system users.

Save Settings Don't Save Settings

**Users Configuration**

User Name: DLink-SSL-User  
 First Name: Max  
 Last Name: Mustermann  
 User Type: SSL VPN User  
 Select Group: DLink  
 Password: .....  
 Confirm Password: .....  
 Idle Timeout: 60 (Minutes)

Helpful Hints...  
 This page provides a consolidated database, where you can add different types of system users and then can associate them with different domains.  
 More...

UNIFIED SERVICES ROUTER

Passen Sie die Benutzereinstellungen Ihren Bedürfnissen an und klicken Sie zum Speichern auf „Save Settings“. Als Gruppe/Portal/Domäne wurde hier „DLink“ ausgewählt, welche in den vorangegangenen Schritten angelegt wurde. Weiterhin wurde der Username als SSL VPN User definiert.

Product Page: DSR-1000N Hardware Version: A1 Firmware Version: 1.03B12\_WW

**D-Link**

DSR-1000N // SETUP ADVANCED TOOLS STATUS HELP

Application Rules Website Filter Firewall Settings Wireless Settings Advanced Network Routing Certificates Users IP/MAC Binding IPv6 Radius Settings Switch Settings

Operation succeeded

**USERS** LOGOUT

This page shows a list of available users in the system. A user can add, delete and edit the users also. This page can also be used for setting policies on users.

**List of Users**

| <input type="checkbox"/> | User Name      | Group  | Type          | Authentication Domain | Login Status          |
|--------------------------|----------------|--------|---------------|-----------------------|-----------------------|
| <input type="checkbox"/> | admin *        | SSLVPN | Administrator | Local User Database   | Enabled (LAN and WAN) |
| <input type="checkbox"/> | guest *        | SSLVPN | Guest         | Local User Database   | Disabled              |
| <input type="checkbox"/> | DLink-SSL-User | DLink  | SSL VPN User  | Local User Database   | Enabled (LAN and WAN) |

Edit Delete Add

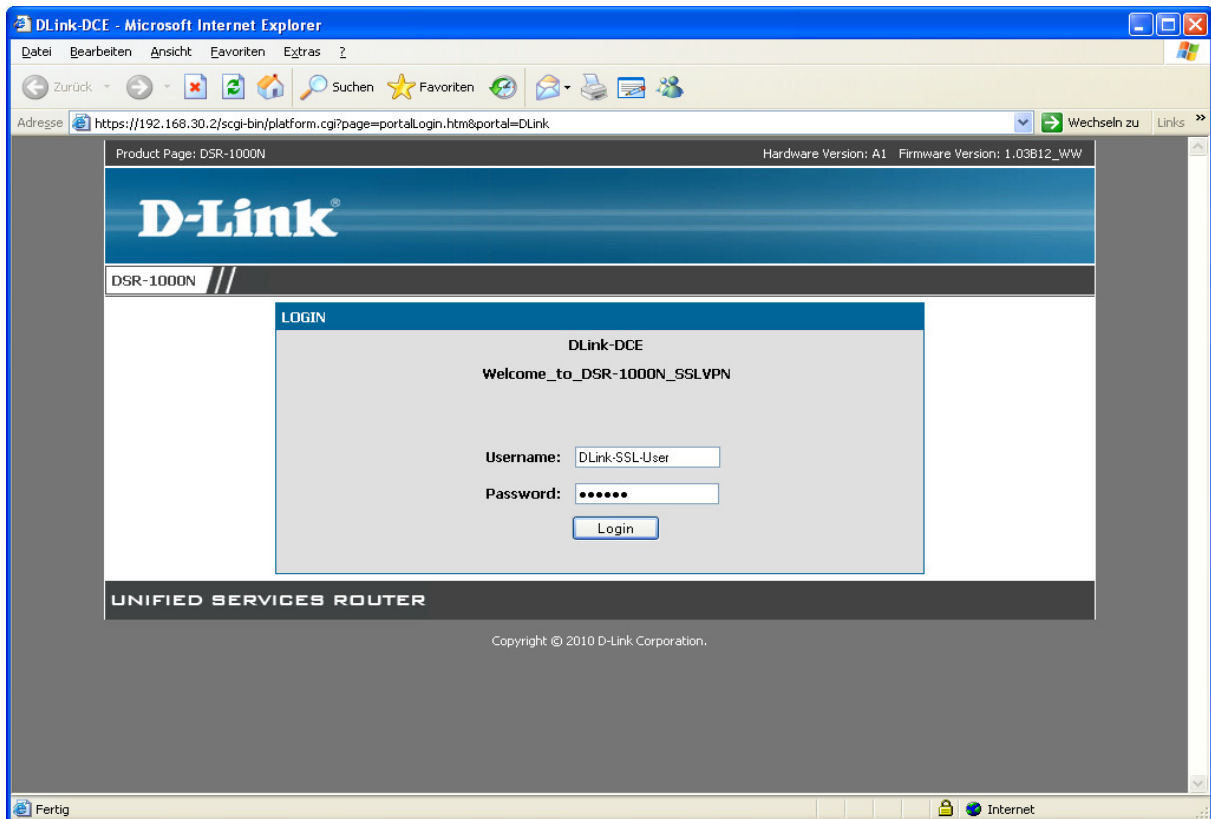
Login Policies Policies By Browsers Policies By IP

Helpful Hints...  
 Authentication of the users (IPsec, SSL VPN, or GUI) is done by the router using either a local database on the router or external authentication servers (i.e. LDAP or RADIUS). User level policies can be specified by browser, IP address of the host, and whether the user can login to the router's GUI in addition to the SSL VPN portal.  
 More...

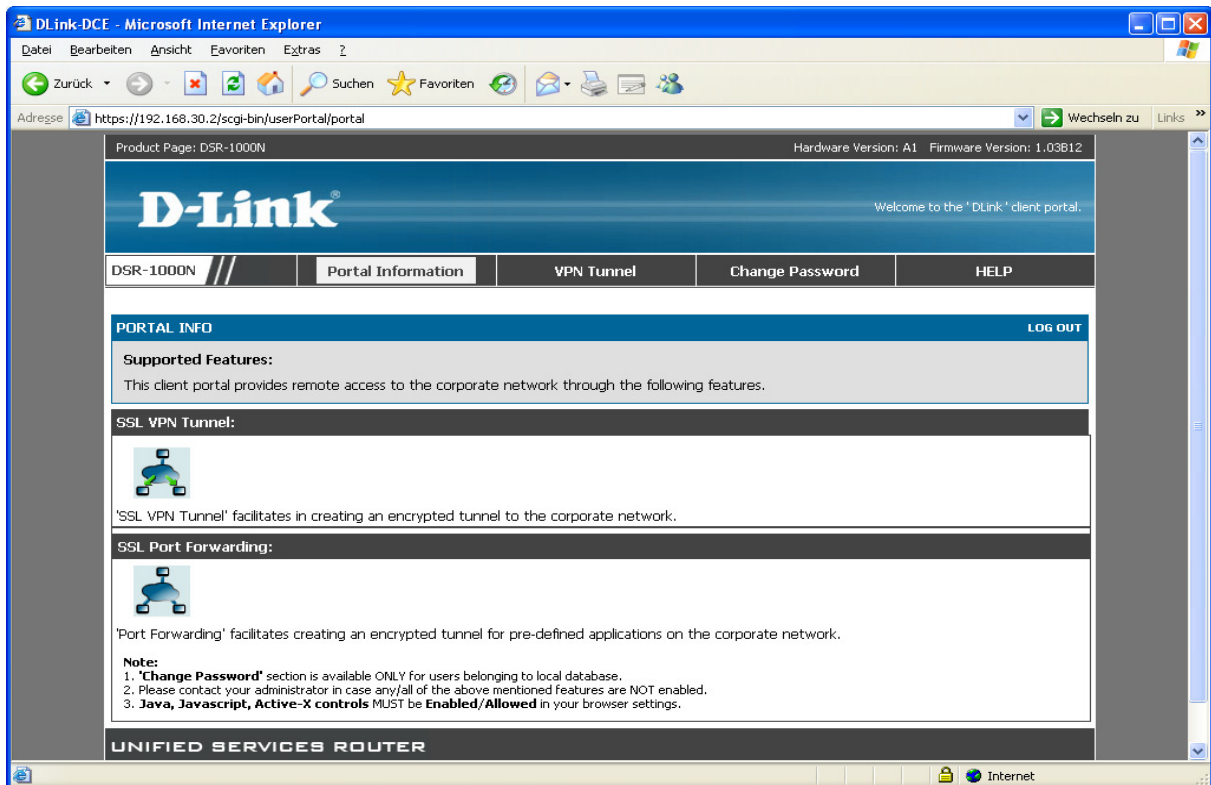
UNIFIED SERVICES ROUTER

In der Übersicht sehen Sie den/die von Ihnen angelegten Benutzer für das System inkl. der standardmäßig angelegten Benutzer.

## 7.) Testen des SSLVPN

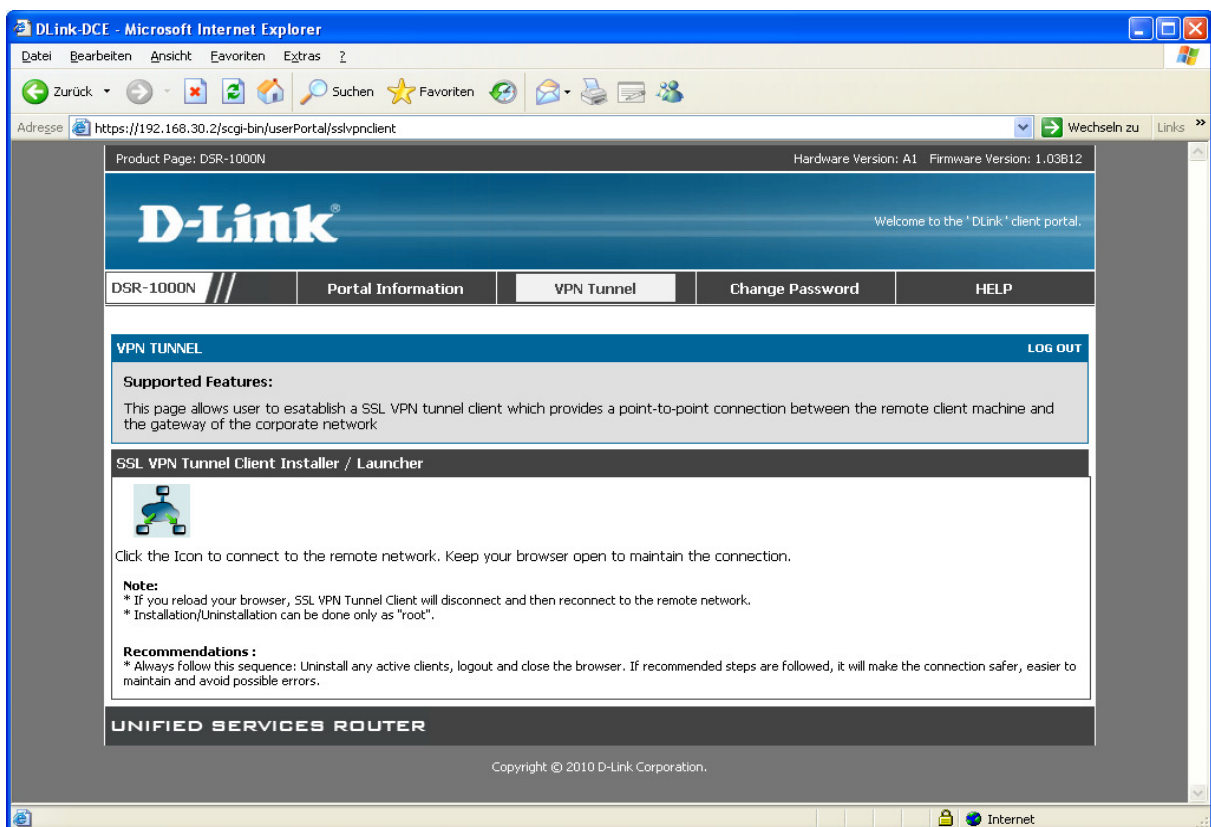


Öffnen Sie die Webseite des SSLVPN (in diesem Fall <https://192.168.30.2/portal/DLink> ) und geben Sie den Benutzernamen und das Passwort des SSLVPN Benutzers ein. Mit „Login“ senden Sie die Eingaben an das Gerät und loggen sich remote ein.

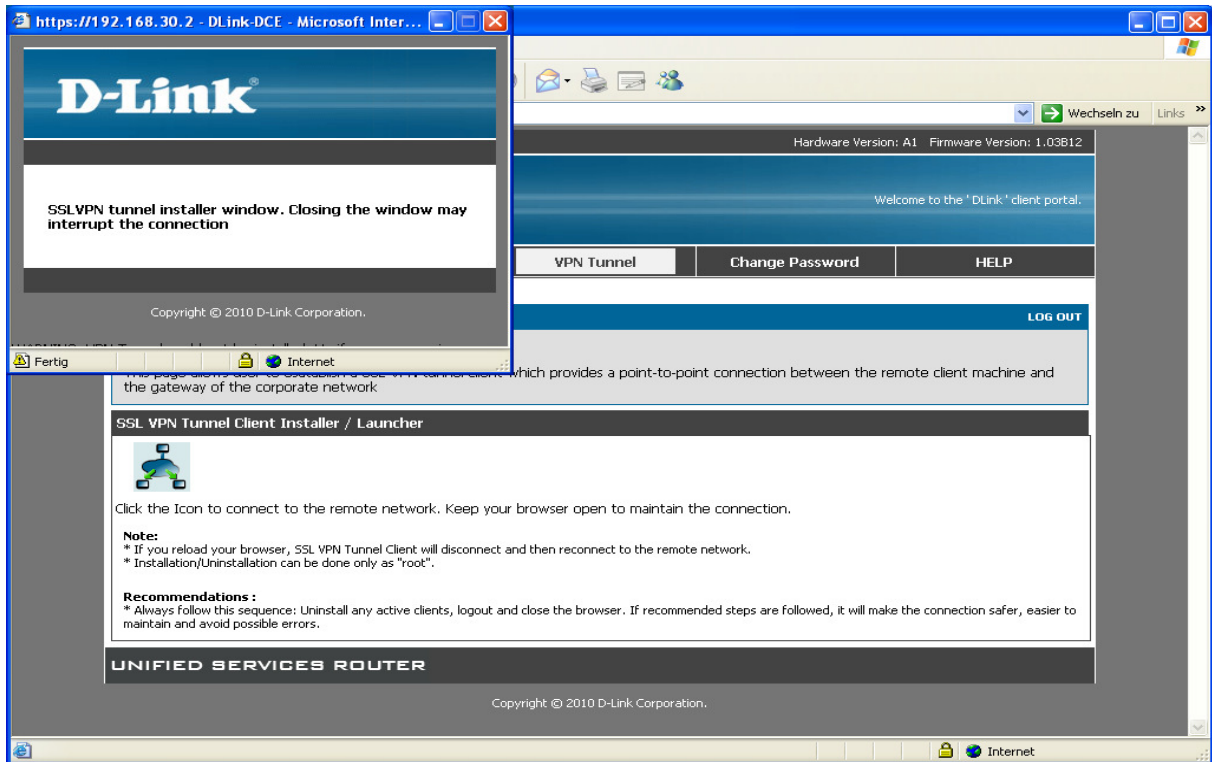


Nach dem Login erscheint die „Portal Information“ Seite. Wechseln Sie jetzt bitte zum Reiter VPN Tunnel.

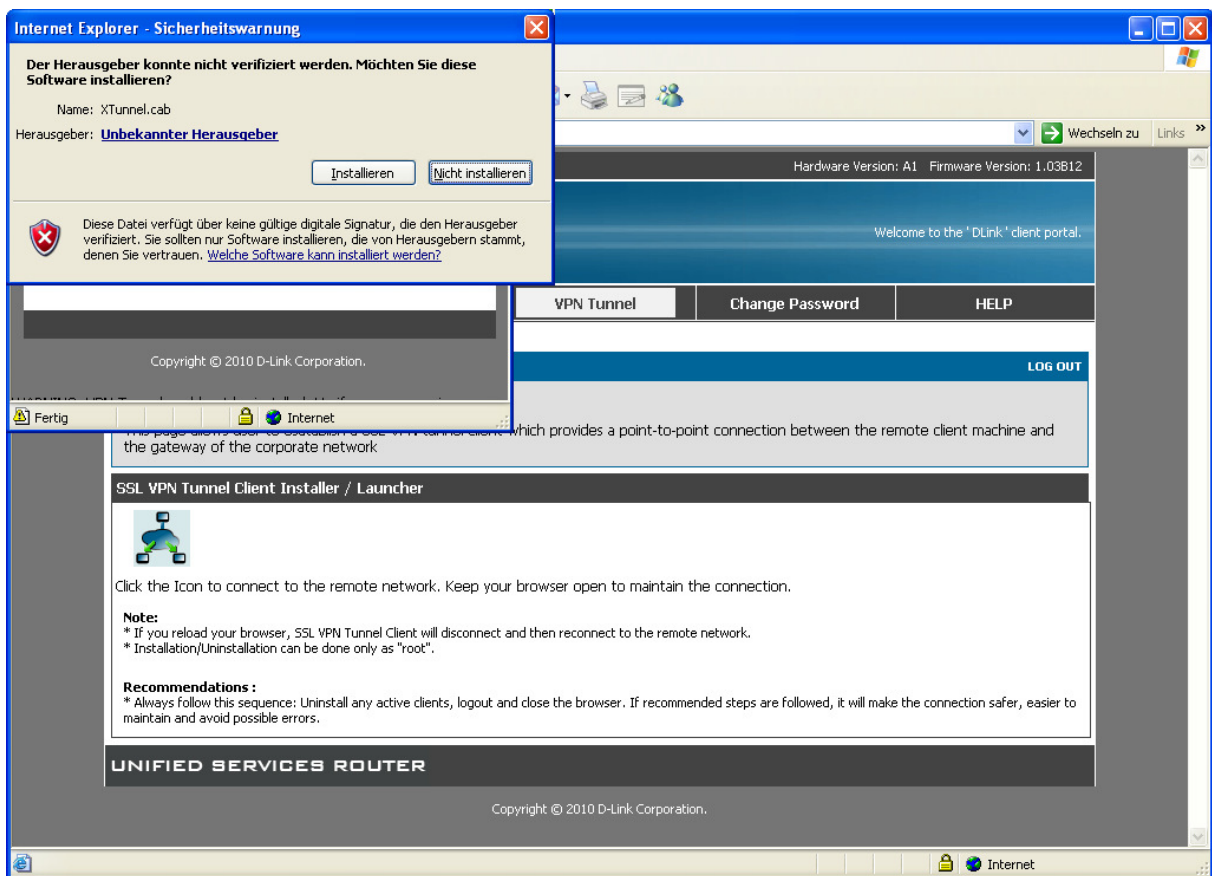
*Stellen Sie bitte sicher, dass sie die Adresse des SSLVPN Servers (hier z.B. <https://192.168.30.2>) als „Vertrauenswürdige Sites“ in Ihrem Browser (z.B. IE8) eingetragen haben.*



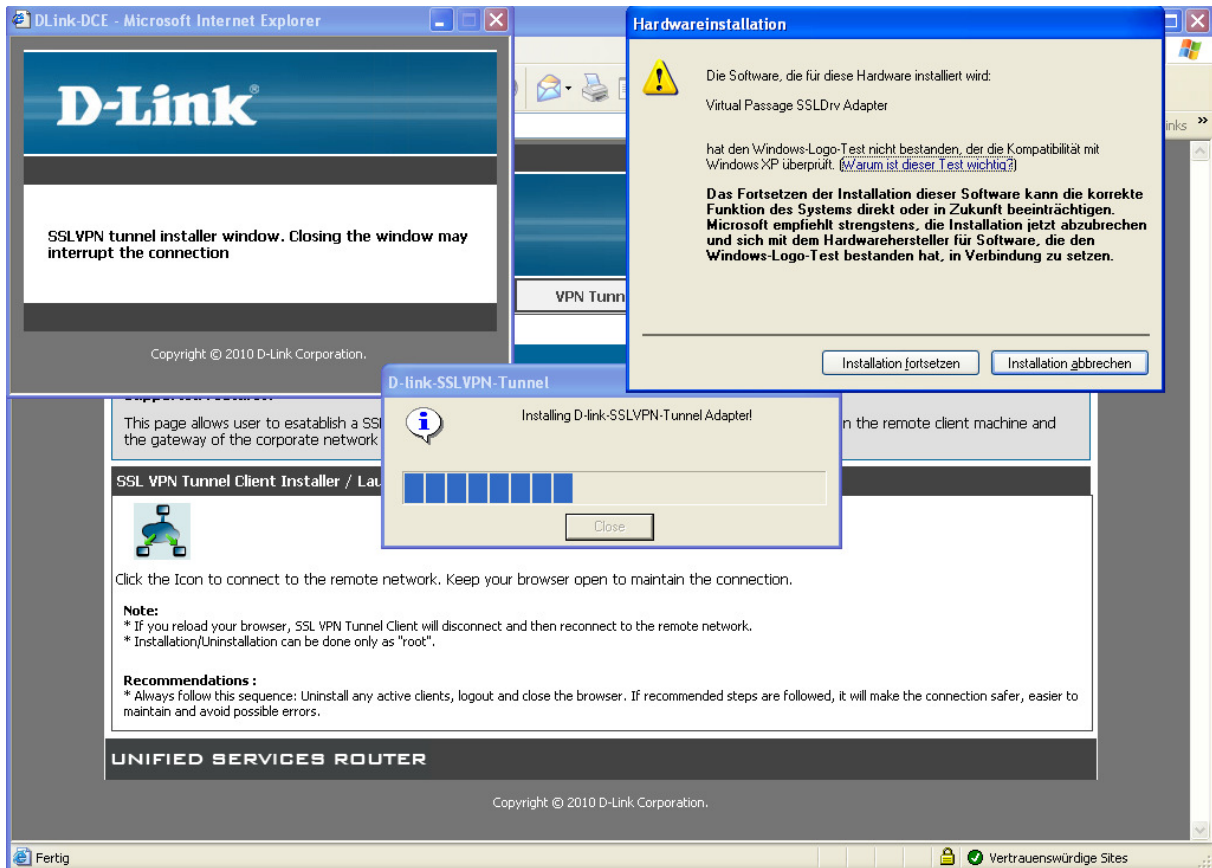
Klicken Sie jetzt auf das „Netzwerksymbol“ auf der Webseite.



Ein neues Fenster öffnet sich, schließen Sie dieses bitte nicht.



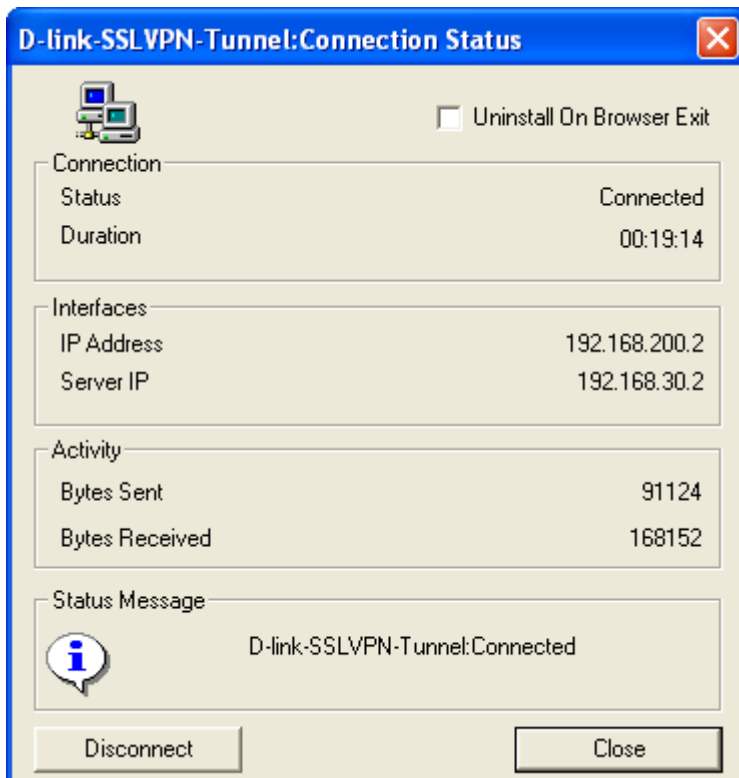
Installieren Sie bitte dieses ActiveX Steuerelement.



Bestätigen Sie bitte die Installation des SSLVPN Tunneltreiber.



Durch Doppelklick auf das Symbol können Sie sich die Verbindungsstatistik ansehen.



Product Page: DSR-1000N Hardware Version: A1 Firmware Version: 1.03B12\_VW

**D-Link**

DSR-1000N // SETUP ADVANCED TOOLS STATUS HELP

Device Info ▶

Logs ▶

Traffic Monitor ▶

Active Sessions

Active RunTime Sessions

Wireless Clients

LAN Clients

Active VPNs

The page will auto-refresh in 4 seconds

**ACTIVE VPN** LOGOUT

This page displays the active VPN connections, IPSEC as well as SSL.

**Active IPsec SAs**

| Policy Name | Endpoint | tx ( KB ) | tx ( Packets ) | State | Action |
|-------------|----------|-----------|----------------|-------|--------|
|             |          |           |                |       |        |

**Active SSL VPN Connections**

| User Name      | IP Address    | Local PPP Interface | Peer PPP Interface IP | Connect Status |
|----------------|---------------|---------------------|-----------------------|----------------|
| DLink-SSL-User | 192.168.10.13 | ppp0                | 192.168.200.2         | Disconnect     |

Poll Interval:  (Seconds)

Helpful Hints... This page lists current established IPsec Security Associations and SSL VPN tunnels. [More...](#)

UNIFIED SERVICES ROUTER

Auf dem DSR-1000N können Sie anhand dieser Übersichtsseite erkennen welche Benutzer derzeit mittels eines VPN verbunden sind.

```

C:\WINDOWS\system32\cmd.exe
Ethernetadapter LAN-Verbindung:
    Verbindungsspezifisches DNS-Suffix: DLink
    Beschreibung. . . . . : Realtek RTL8169/8110 Family Gigabit Ethernet NIC
    Physikalische Adresse . . . . . : 00-C0-9F-8E-93-8A
    DHCP aktiviert. . . . . : Ja
    Autokonfiguration aktiviert . . . . . : Ja
    IP-Adresse. . . . . : 192.168.10.13
    Subnetzmaske. . . . . : 255.255.255.0
    Standardgateway . . . . . : 192.168.10.1
    DHCP-Server . . . . . : 192.168.10.1
    DNS-Server. . . . . : 192.168.10.1
                          194.25.2.129
    Lease erhalten. . . . . : Mittwoch, 29. Dezember 2010 14:46:24
    Lease läuft ab. . . . . : Samstag, 1. Januar 2011 02:46:24

PPP-Adapter VirtualPassage:
    Verbindungsspezifisches DNS-Suffix:
    Beschreibung. . . . . : WAN (PPP/SLIP) Interface
    Physikalische Adresse . . . . . : 00-53-45-00-00-00
    DHCP aktiviert. . . . . : Nein
    IP-Adresse. . . . . : 192.168.200.2
    Subnetzmaske. . . . . : 255.255.255.255
    Standardgateway . . . . . : 192.168.200.2
  
```

Mittels „Windows Taste“ -> „Start“ -> „Ausführen“ -> „cmd“ -> „ipconfig -all“ können Sie sich die IP Adressen anschauen.

Die „PPP-Adapter VirtualPassage“ zeigt die durch das SSLVPN vergebene IP Adresse an.



```
C:\WINDOWS\system32\cmd.exe
C:\Dokumente und Einstellungen\Administrator>
C:\Dokumente und Einstellungen\Administrator>tracert heise.de

Routenverfolgung zu heise.de [193.99.144.80] über maximal 30 Abschnitte:

 1    2 ms    2 ms    2 ms    192.168.200.1
 2    3 ms    2 ms    2 ms    192.168.30.1
 3   55 ms   55 ms   55 ms   217.0.116.244
 4   58 ms   56 ms   56 ms   217.0.80.2
 5   63 ms   58 ms   144 ms  fed4-i.F.DE.NET.DTAG.DE [62.154.14.226]
 6  126 ms   54 ms   55 ms   217.243.218.38
 7   55 ms   55 ms   55 ms   heise2.f.de.plusline.net [82.98.98.106]
 8   55 ms   55 ms   55 ms   redirector.heise.de [193.99.144.80]

Ablaufverfolgung beendet.
C:\Dokumente und Einstellungen\Administrator>
```

Mittels „Windows Taste“ -> „Start“ -> „Ausführen“ -> „cmd“ -> „tracert heise.de“ können Sie sich Testweise das Routing des Client anschauen.

Anhand dieses Screenshot erkennen Sie, dass der gesamte Datenverkehr jetzt über den SSLVPN Tunnel läuft.

*Beachten Sie bitte, daß dieser Test von einem Rechner ausgeführt werden sollte, der nicht innerhalb des lokalen LANs verbunden ist, sondern von extern über die WAN Schnittstelle des DSR-1000N zugreift.*

*Sollte der Service von DynDNS.org (oder alternativer Anbieter) genutzt werden, so ist auch ein Zugriff über den Namen möglich.*

*Befolgen Sie für die Einrichtung des DynDNS-Service auf dem DSR-1000N bitte die Konfigurationsanleitung im Handbuch (Kapitel 9.7).*

**Bei Rückfragen bezüglich der Sicherheit und der Integration in Ihre Netzwerkinfrastruktur wenden Sie sich bitte an Ihren lokalen Netzwerkadministrator.**