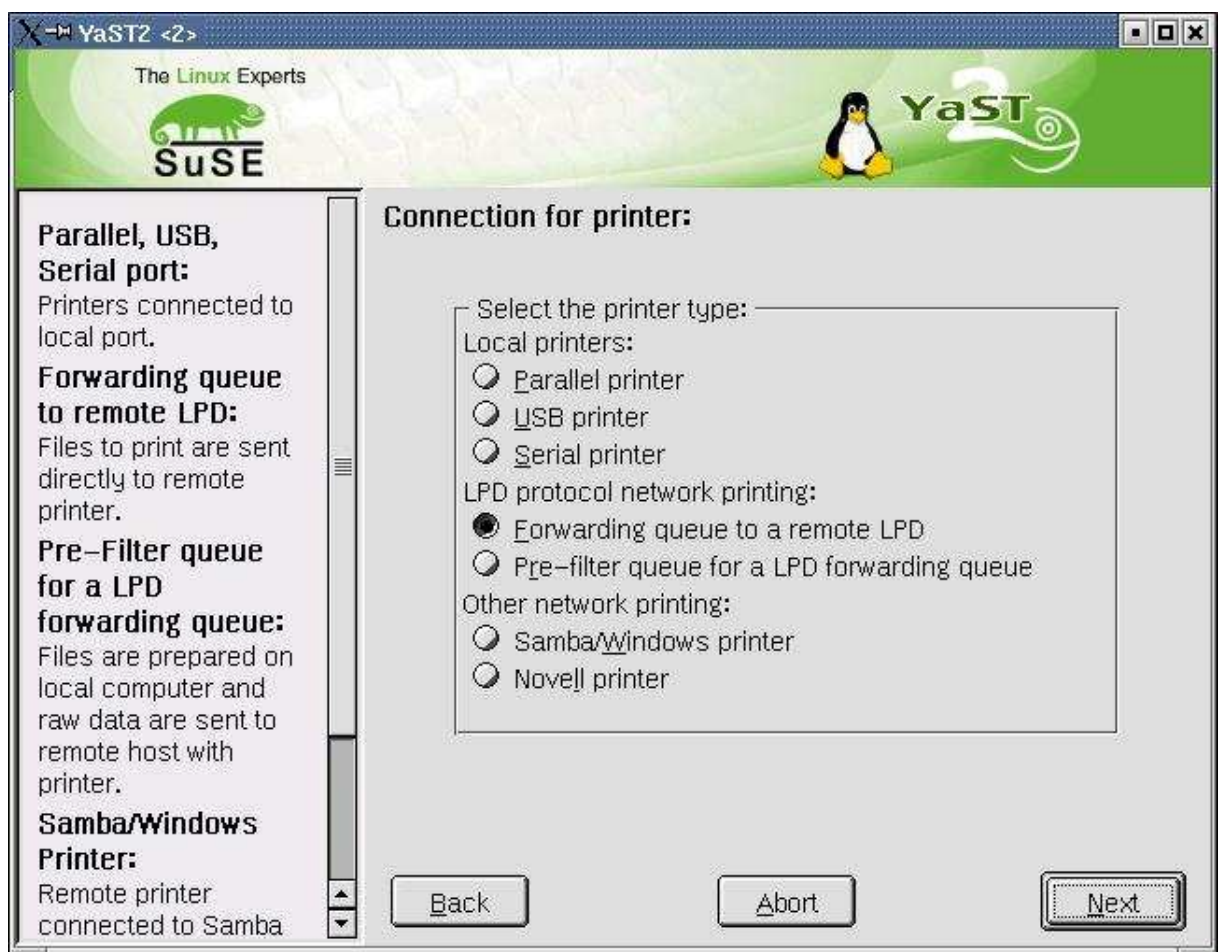


Installation of a Print server (here DP101+) under Linux in General

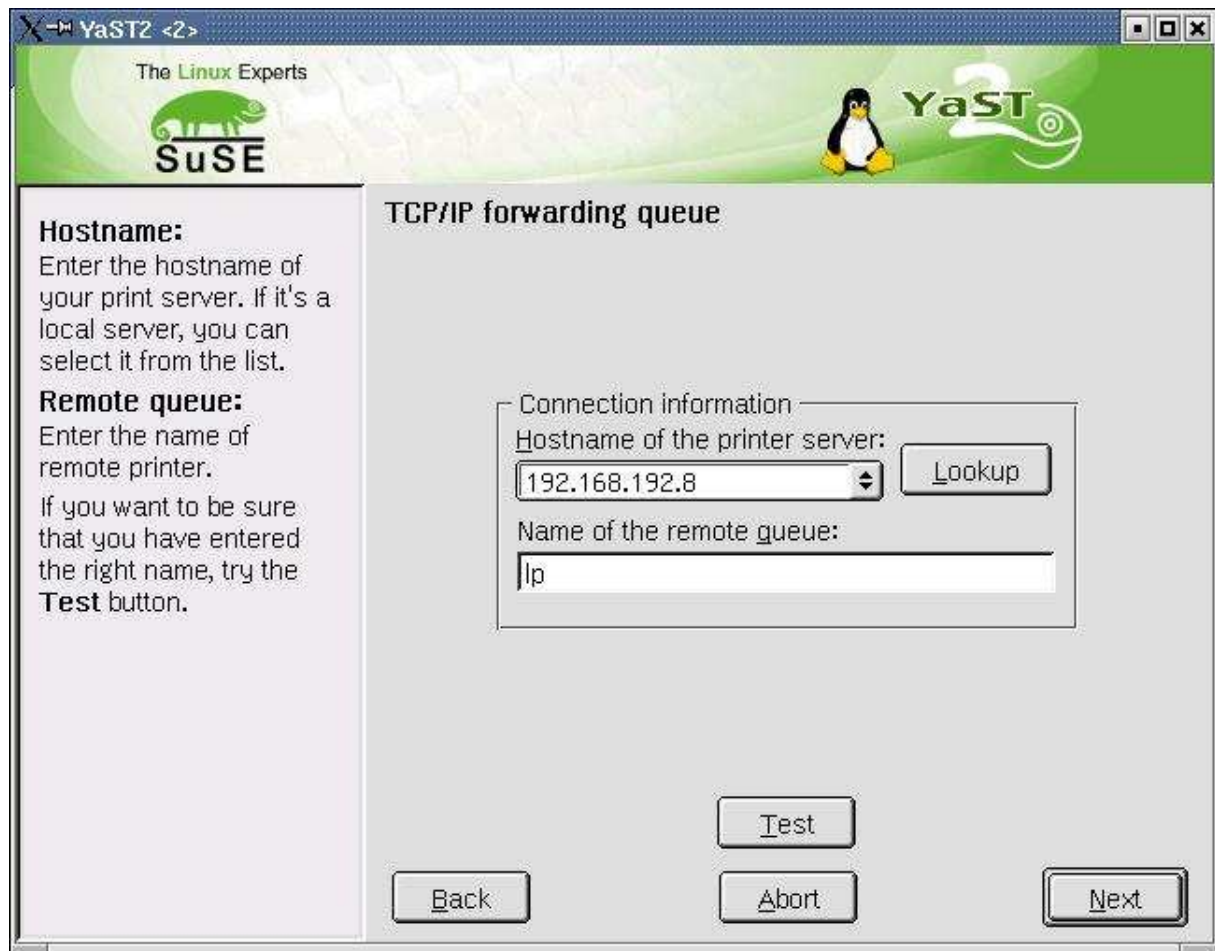
- First Thing to do is to assign a IP address to the Print server using

PLEASE TO NOT TRY TO ASSIGN AN IP ADRESS TO PRINT SERVERS WHICH HAVE EXTANTION WITH A [+ / PLUS] THESE HAVE ALRAEDY ONE JUST TRY TO PING 192.168.0.1 OR 192.168.0.10

- *Arp -s [192.168.x.x] [00-00-xx-xx-xx-xx] – this is an example*
You can find the MAC address in the bottom up the print server !
- Now you can access the print server using telnet and the IP address
To change the port name
- After successfully changed the port name quit, save and exit
- Next step is to install the print server as a remote LPD
Click on the Suse Icon and follow:
System à Configuration à Printer



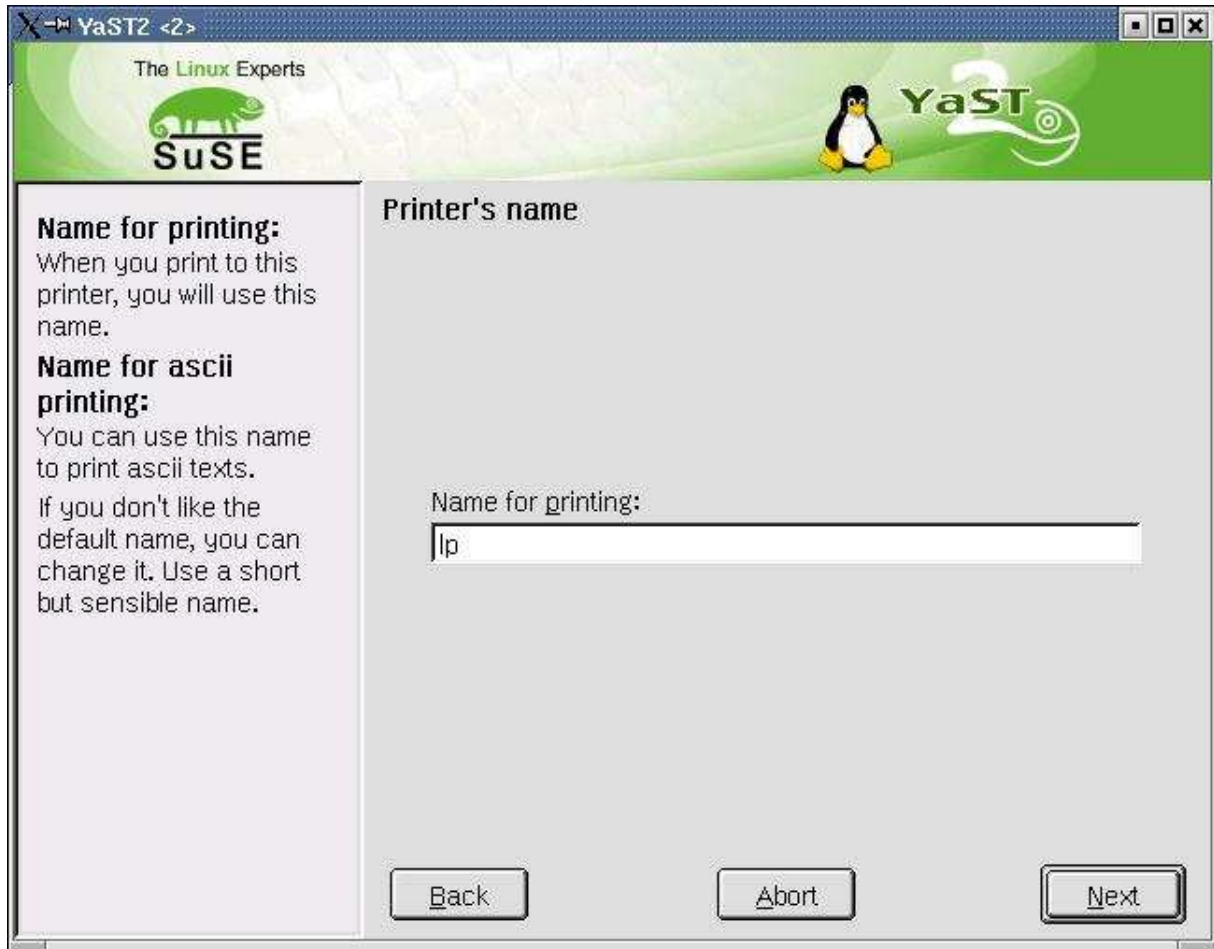
- After selecting the above attitude click à *Next*



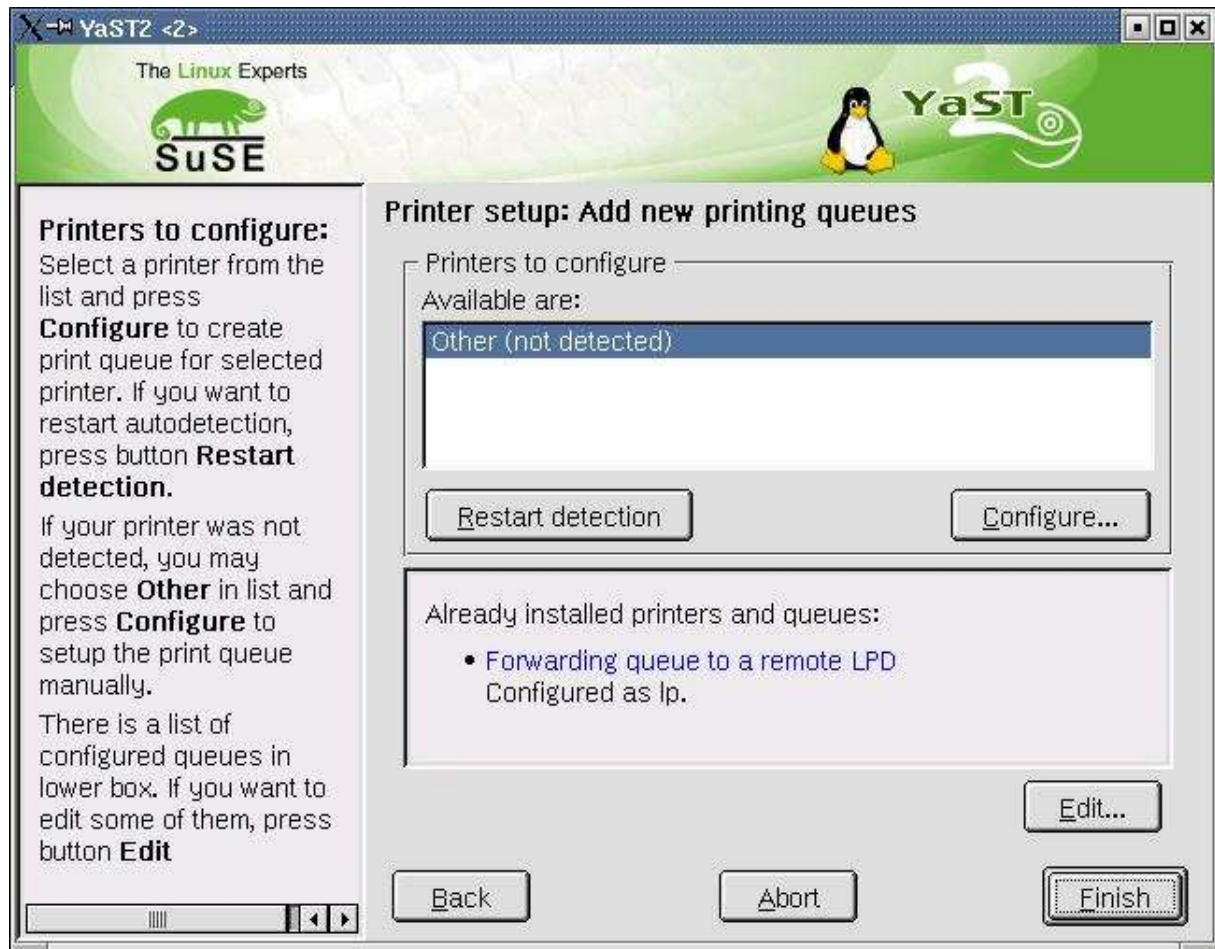
- Here you have to enter the assigned IP address of the Print server which you have done under Telnet click à *Test !!!*



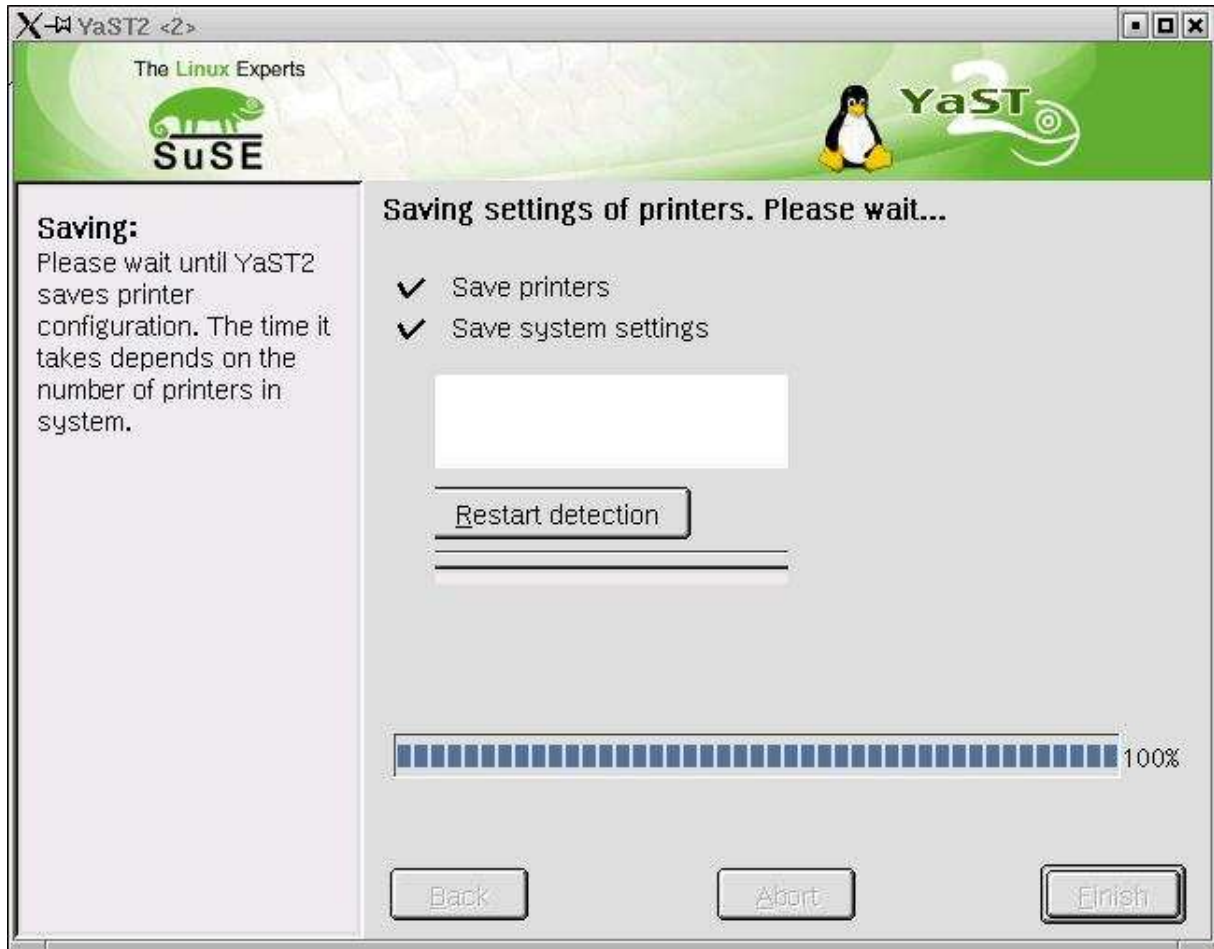
should appear to show you the Print server is found in the network
Click à *OK* and *Next*



- Here you can assign a name for your Printer like : *HP LJ6P* - example
Click à *Next*



- Your done Click à *Finish*



this confirms you that the settings are saved and the Print server is ready to Work.