

**Product Category:** Print Servers**Model No:** All Print Servers**Subject : Does D-Link print server support Novell Distributed Print Services over Pure IP****Question:**

Can I install DP-100/300 series in NetWare5 environment which run NDPS over Pure IP (TCP/IP)?

**Answer:**

Novell' Distributed Print Services™ (NDPSTM) is a product built on next Novell's generation printing architecture that allows administrators to take advantage of built-in printer intelligence to centrally manage network printing resources, improve network printing performance, and reduce the hassles of network printing for end-users. The NDPS architecture was designed in partnership with Hewlett-Packard Company and Xerox Corporation to leverage their expertise in network printing.

This document will guide you to setup a print server (DP-100/300) to work with NDPS under IP protocol only environment.

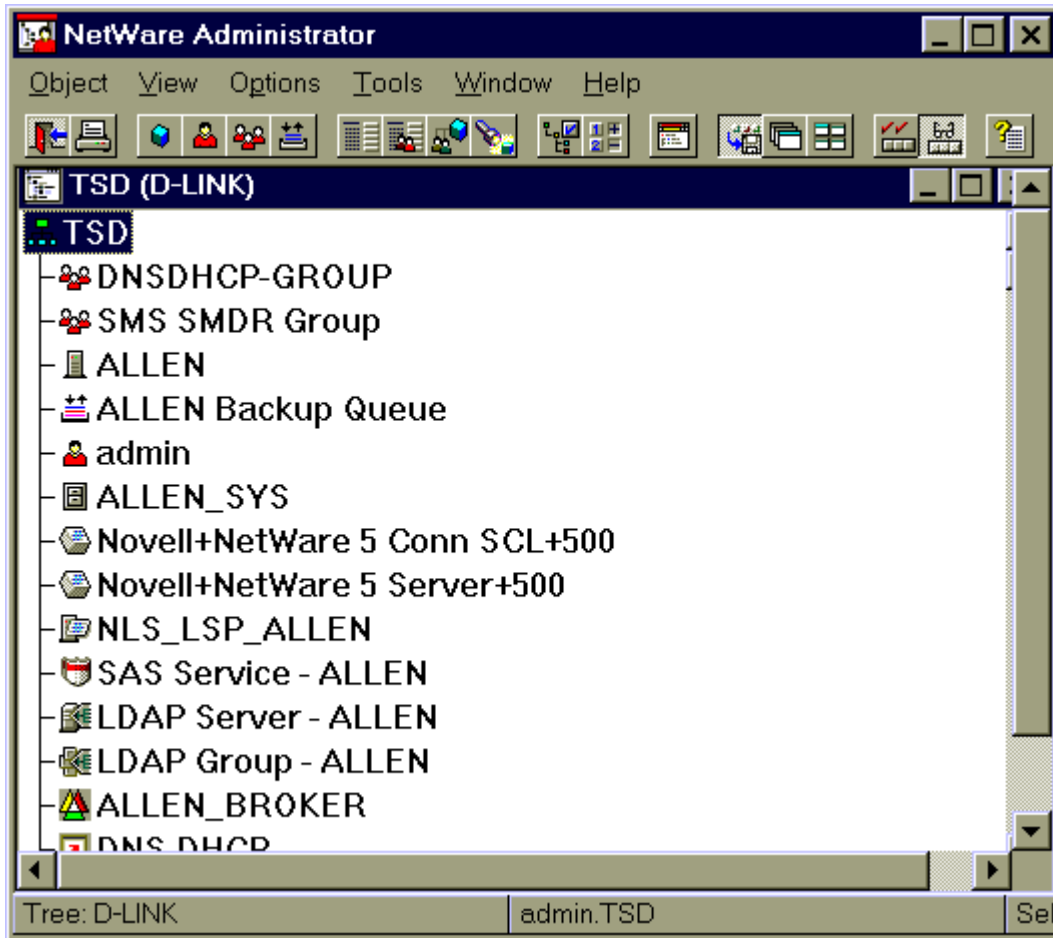
**Requirement:**

1. You need a Win95/98 machine on the network with SPX/IPX protocol and Client for NetWare Networks (or Client32).
2. You must install Novell Client v3.1 for Windows 95/98 English. Novell Client v3.1 for Windows 95/98 English is free.
3. You must have supervisor/administrator access right on the NetWare server.
4. In the following document, it is assumed that the settings in Novell Server are:

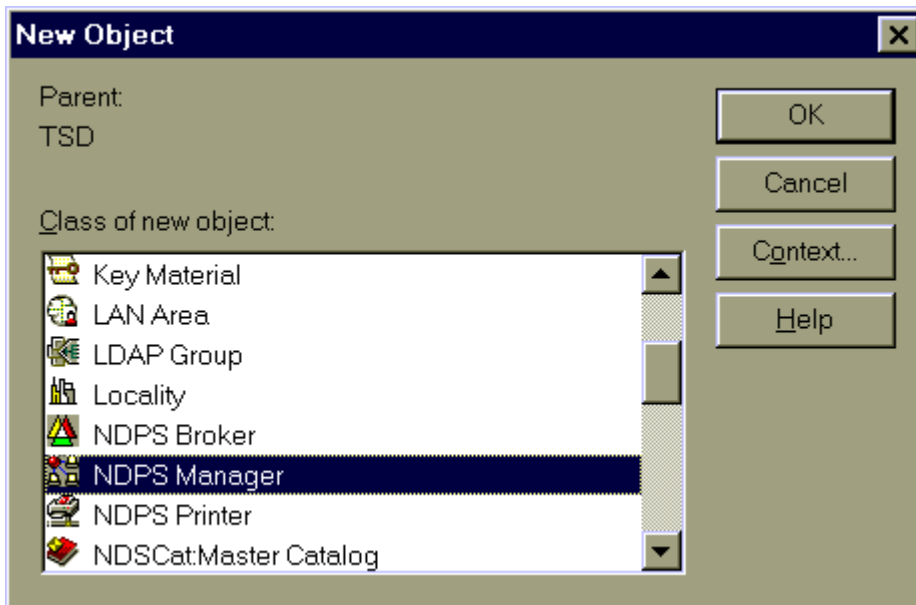
Server Name = Allen  
Tree Name = D-Link  
Organization = TSD  
CN = Admin.TSD

**Procedure:****Step 1. Create a NDPS Manager Object**

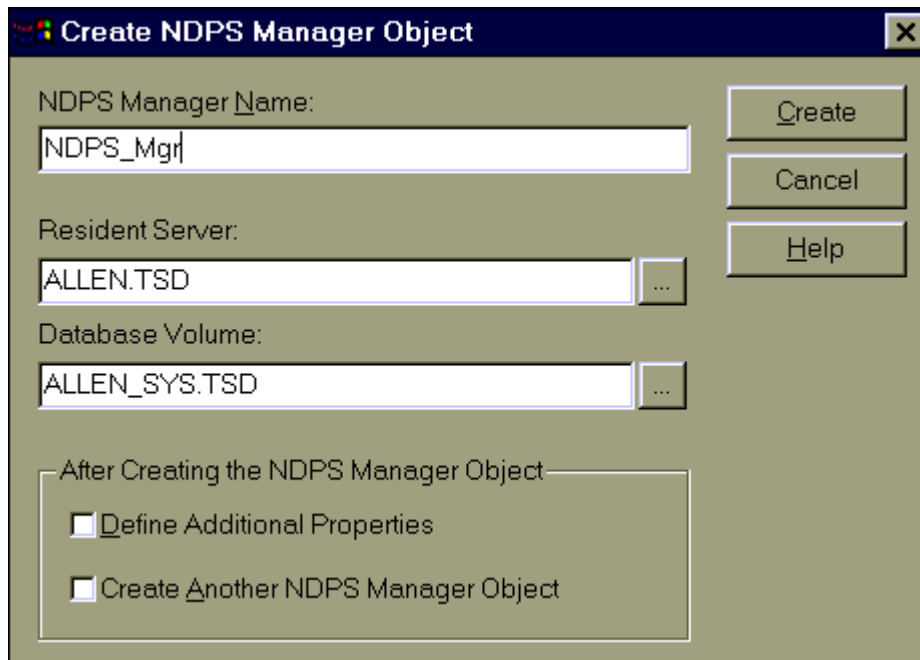
- 1.1 Start your Novell Client under Windows95/98, and Login to NetWare server as Admin.
- 1.2 Execute "**Nwadm32.exe**" located in **Allen/SYS:\Public\Win32**.
- 1.3 Click the Tree, click the right button of mouse, and select "Create an NDPS Manager object," as shown below:



1.4 Select NDPS Manager, then click "OK."



1.5 Type a name in NDPS Manager Name (e.g., NDPS\_Mgr). Browse the "Resident Server and Database Volume" and assign the correct server and volume (that is, "Resident Server= Allen.TSD", "Database Volume= Allen\_SYS.TSD" in this case).



1.6 Click "Create."

Step 2. Load NDPS Manager service in NetWare

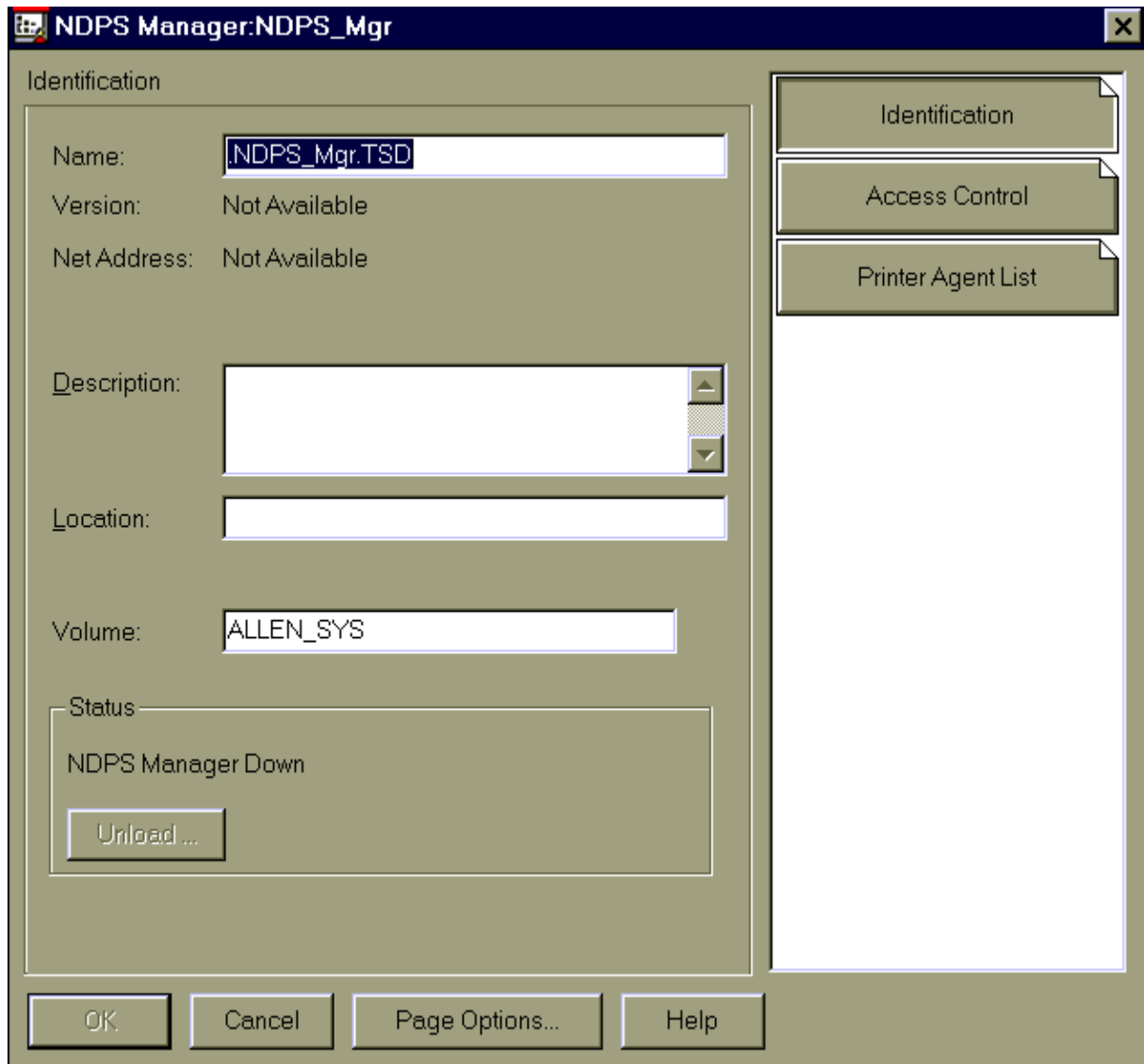
2.1 Type "NDPSM" on NetWare Server's console and select NDPS Manager object (e.g., NDPS\_Mgr).

Note: To autolaod the NDPS Manager object, please add the following line to the AUTOEXEC.NCF file.

Load NDPSM NDPS\_Mgr.TSD

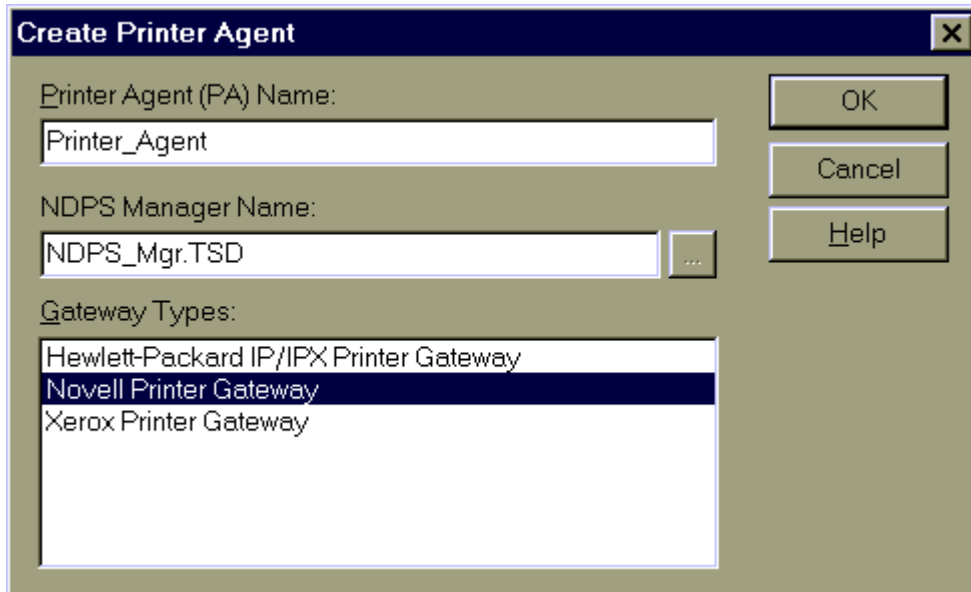
Step 3. Create a "Printer Agent in the NDPS Manager Object" by using Netware administrator.

3.1 Double-click the NDPS Manager object.



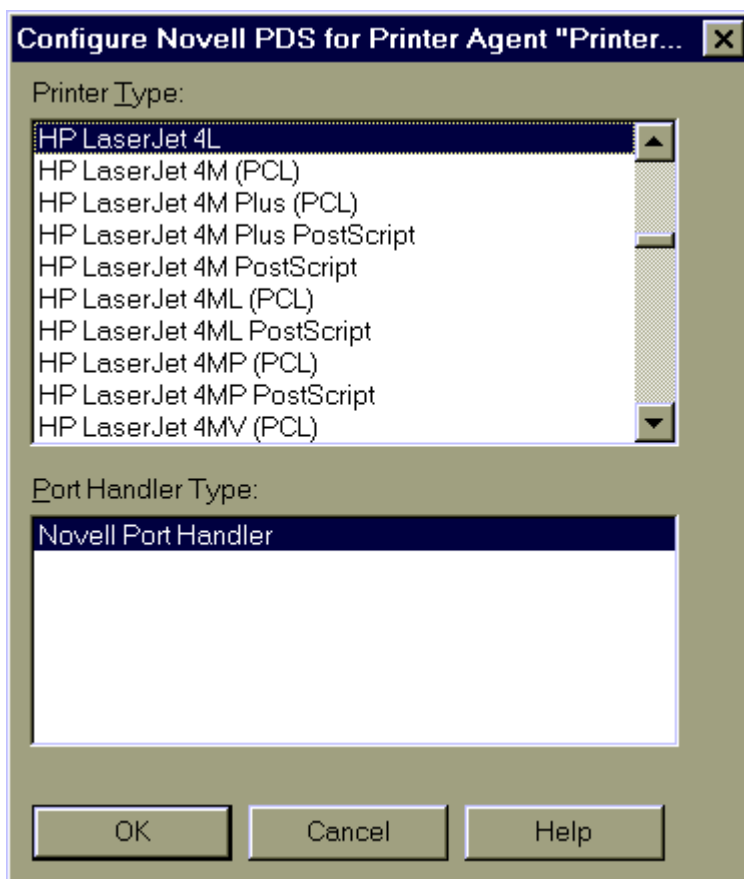
3.2 Click the Printer Agent List, then click "New".

3.3 Type NDPS Printer name (e.g., Printer\_Agent), then select "Novell Printer Gateway" in Gateway type.



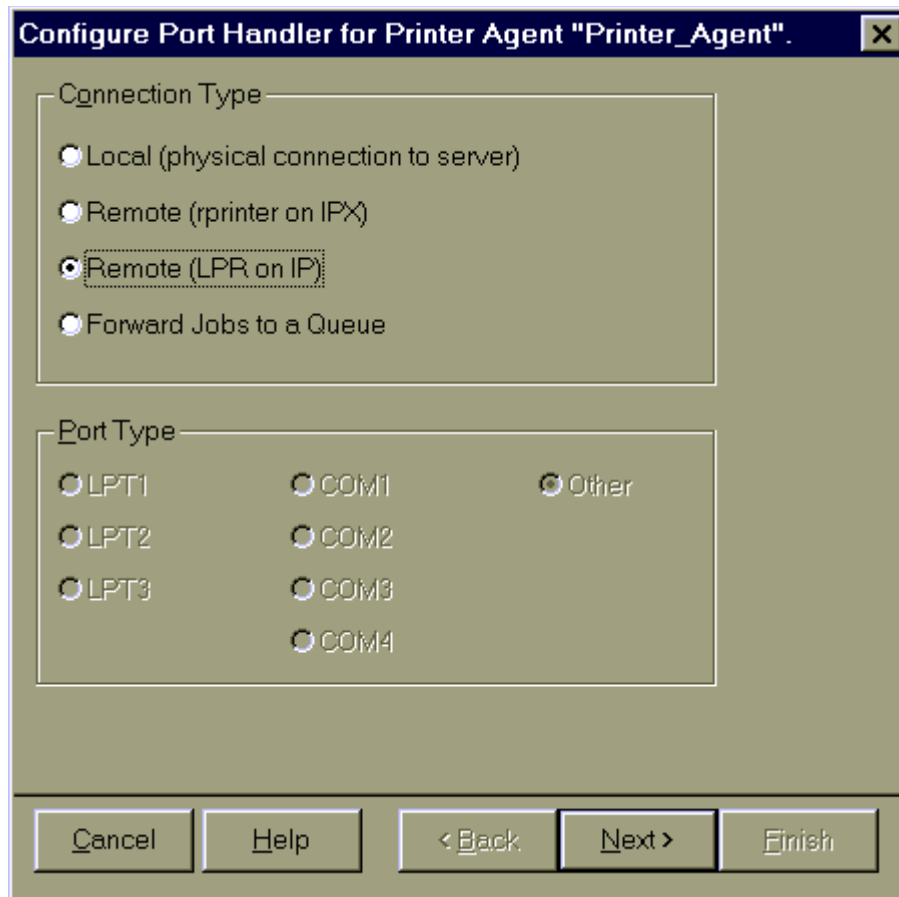
3.4 Click "OK"

3.5 Select the driver (or a compatible driver) of your printer.



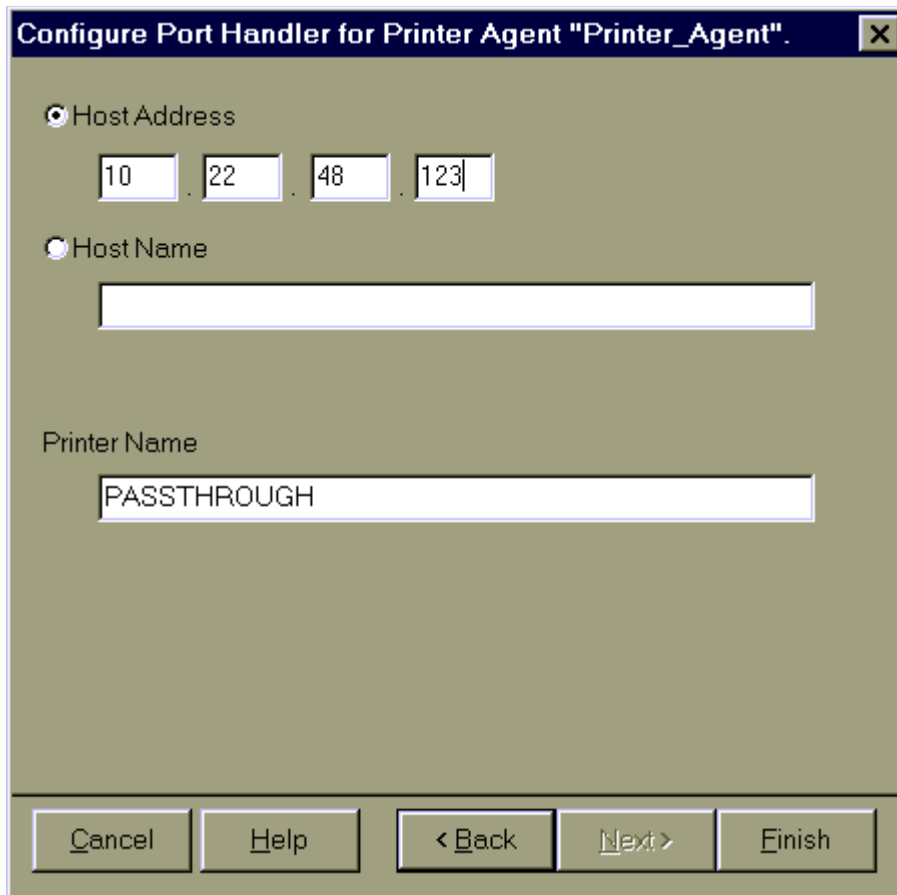
3.6 Click "OK."

3.7 Select Remote (LPR on IP) in the Connection Type.



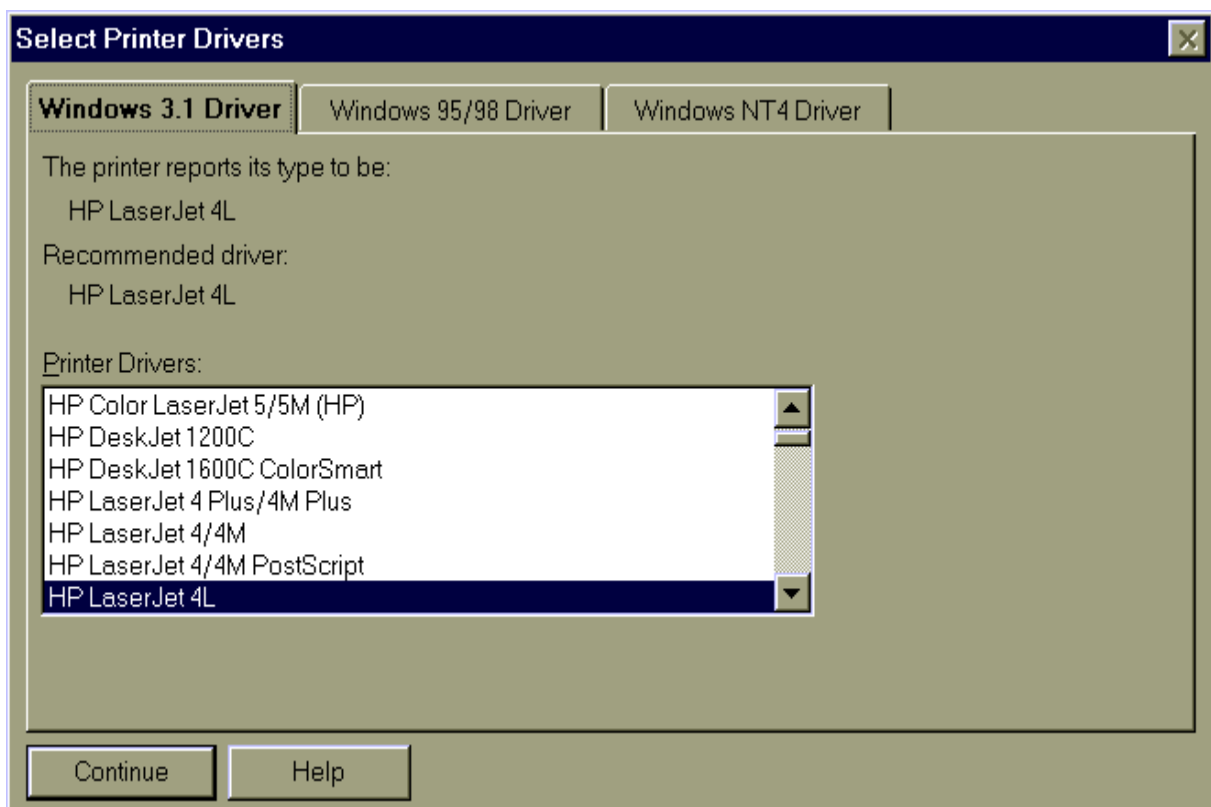
3.8 Click "Next."

3.9 Assign "Host Address" as the IP of Printer Server and "Printer Name" as the Port Name of Printer Server.

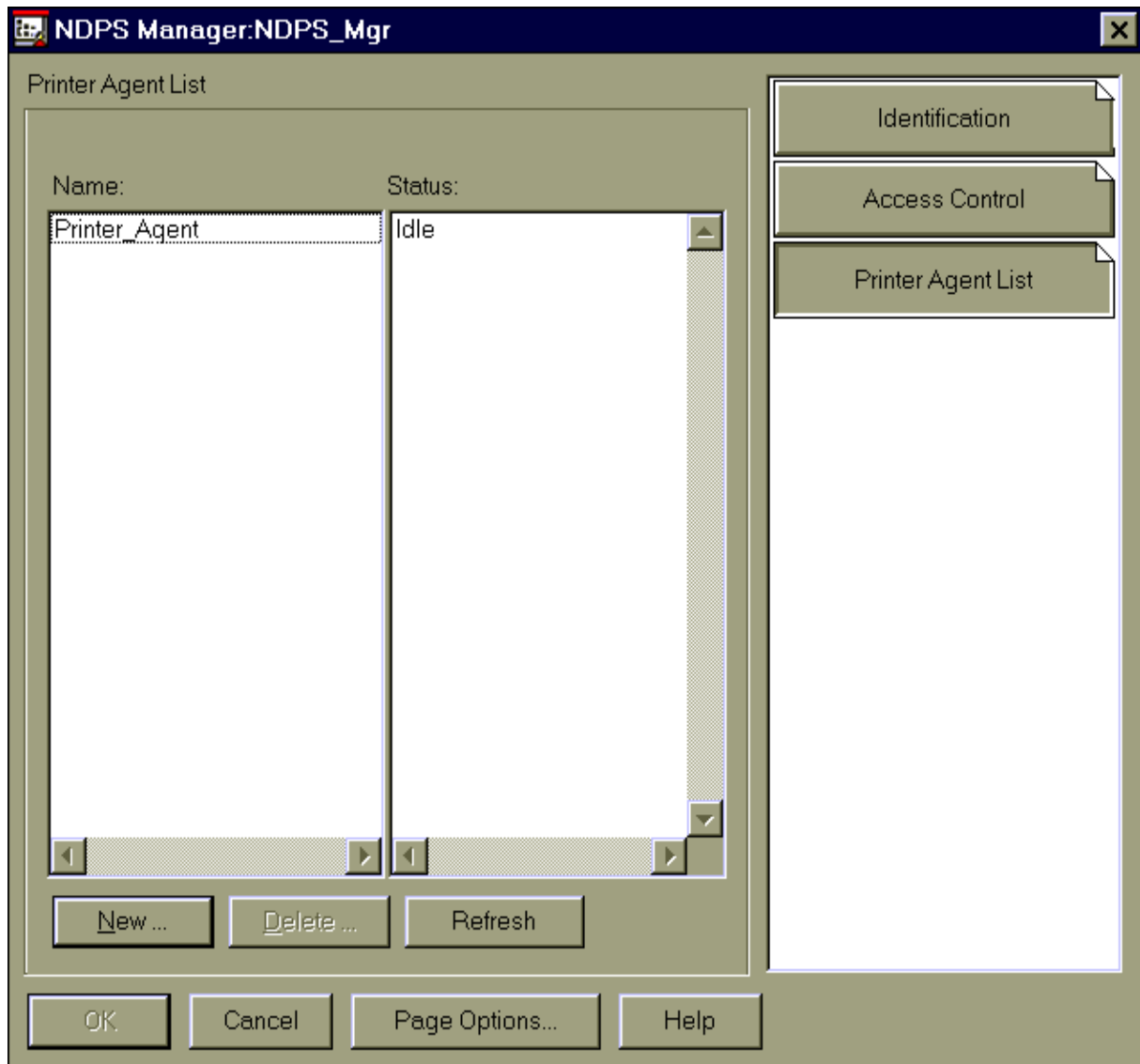


3.10 Click "Finish."

3.11 Select the driver (or a compatible driver) for Windows 3.1, Windows 95/98 and Windows NT4, respectively.



3.12 The new Printer Agent will now appear in the Printer Agent Windows.

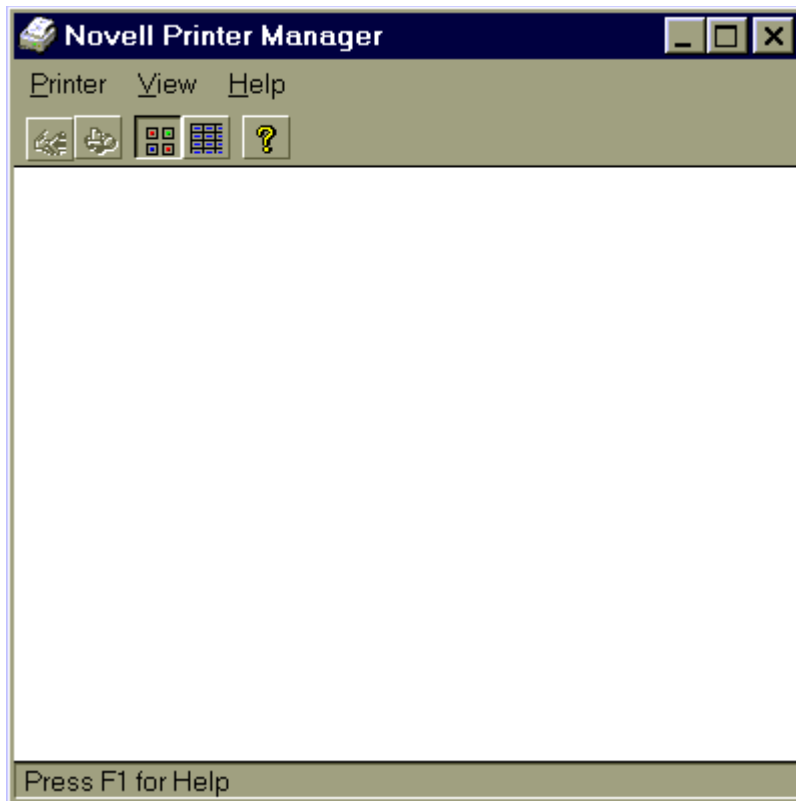


3.13 Now, you have created a Public Access Printer successfully.

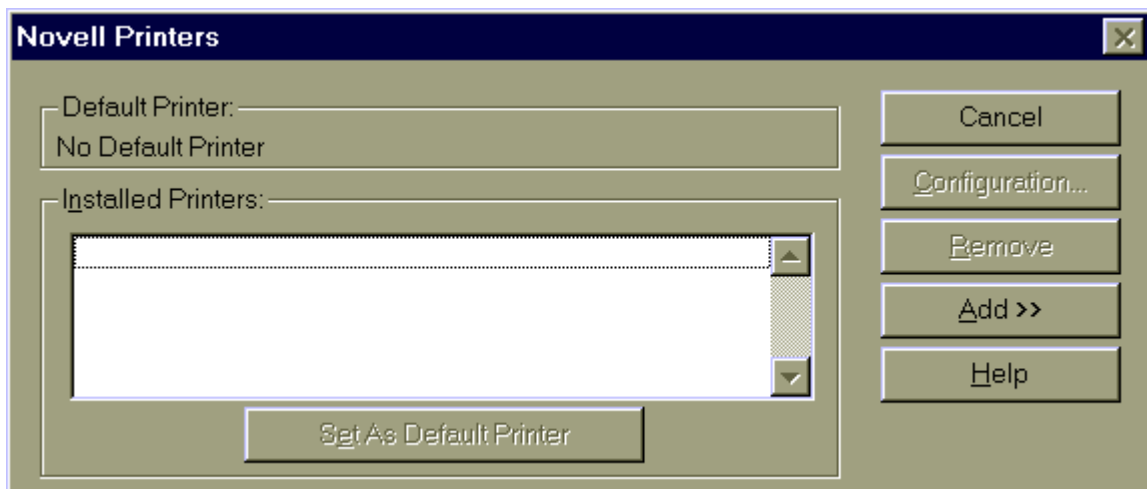
Step 4. Install a Novell Printer on your (IP protocol only) workstation. (Note: Installing Novell Client32 for Windows95/98 on each workstation using NDPS is a must.)

4.1 Execute "Nwpmw32.exe" on Novell Client for Windows95/98 located in "Allen/SYS:\Public\Win32".

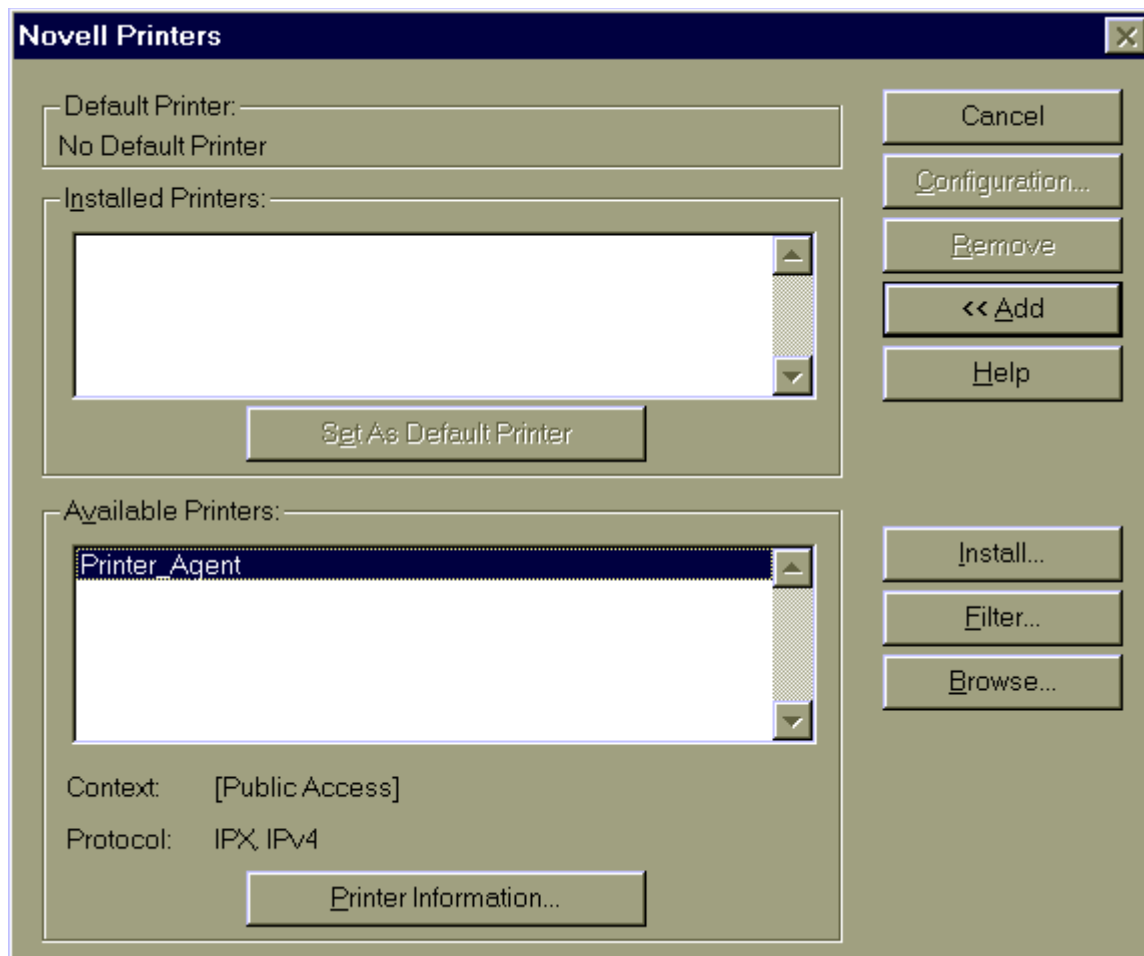




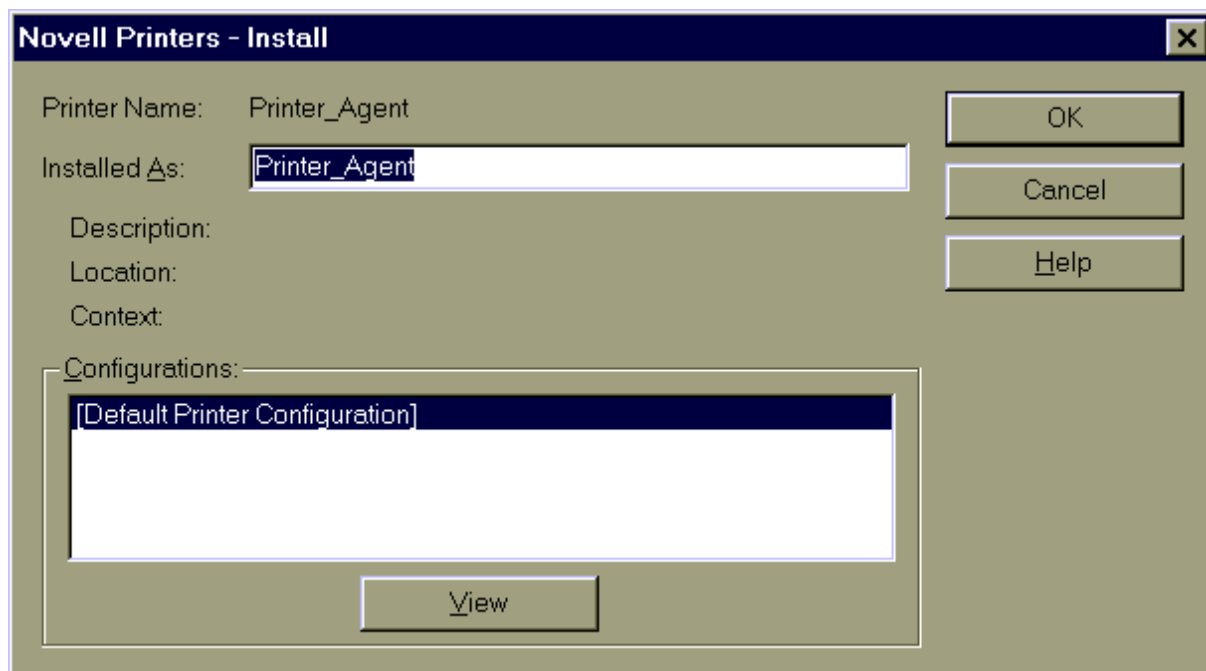
4.2 Click "Printer", select "Add".



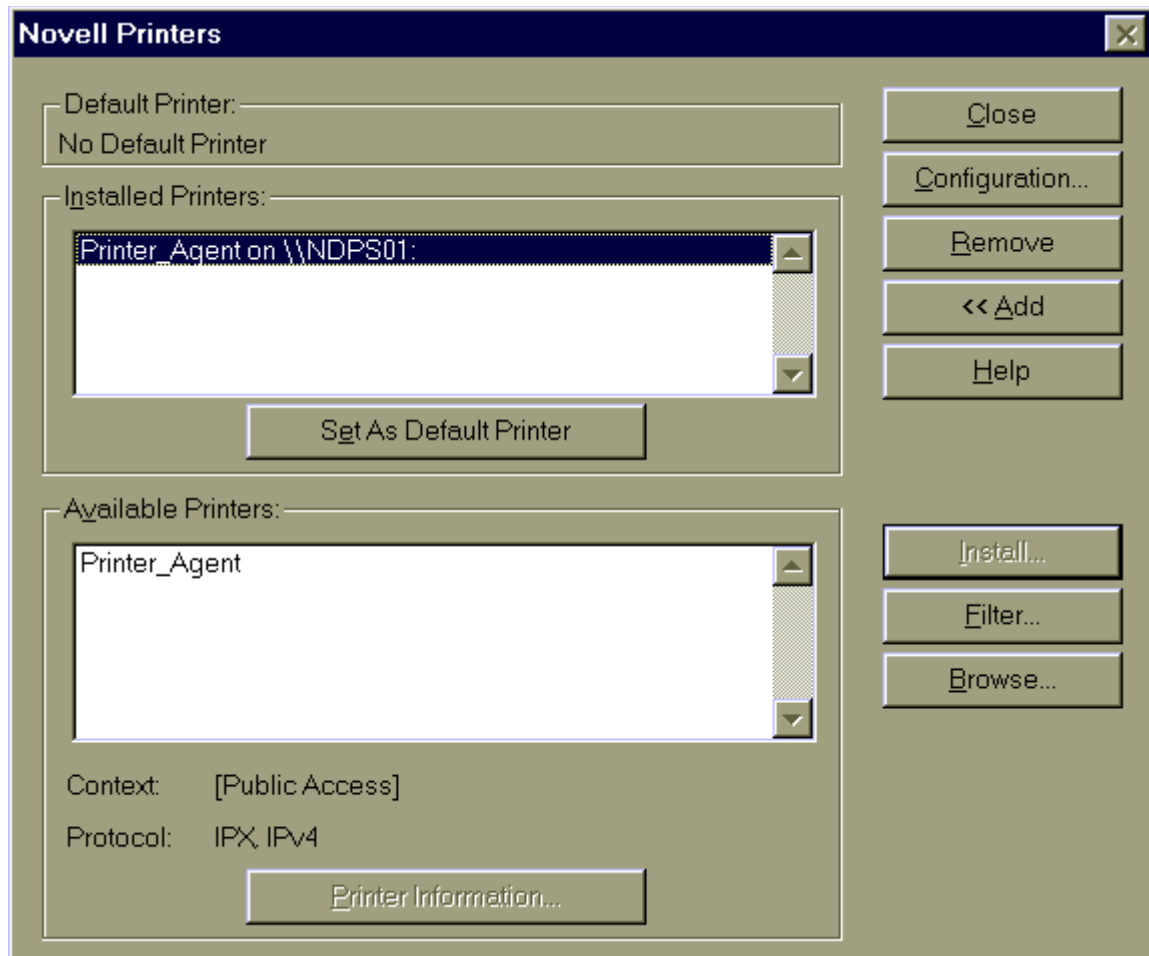
4.3 Click "Add", select a printer and install (e.g., Printer\_Agent)



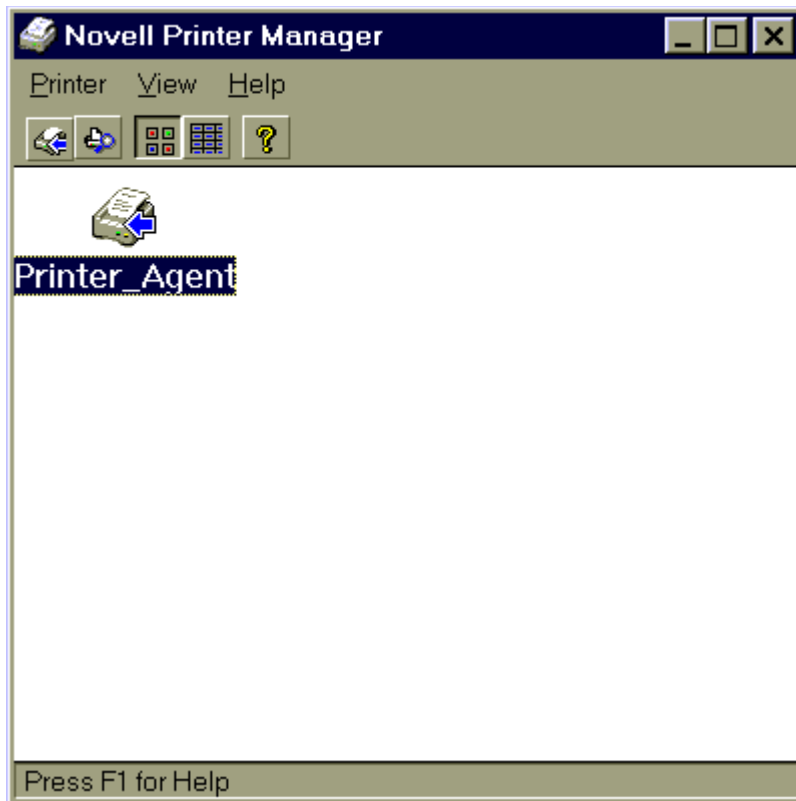
4.4 Click "OK".



4.5 Click "Close".



4.6 The printer (e.g., Printer\_Agent) appears in the Novell Printer Manager windows and is available for print job.



4.7 Now, you can see an available printer under "My Computer-> Printer" of Windows 95/98. Please print a test page to confirm the printer is available.

Last modified on 1999/11/15  
Copyright by D-Link Corporation

----- End of Document -----

Formularende