

Media Converter Series

Version 1.00

**Media Converter**

**User Manual**

Business Class Networking

---

# Preface

D-Link reserves the right to revise this publication and to make changes in the content hereof without obligation to notify any person or organization of such revisions or changes.

## Manual Revisions

| Revision | Date              | Description       |
|----------|-------------------|-------------------|
| 1.00     | December 04, 2015 | • Initial release |

## Trademarks

D-Link and the D-Link logo are trademarks or registered trademarks of D-Link Corporation or its subsidiaries in the United States or other countries. All other company or product names mentioned herein are trademarks or registered trademarks of their respective companies. Internet Explorer®, Windows® and the Windows logo are trademarks of the Microsoft group of companies. Copyright © 2015 by D-Link Corporation, Inc. All rights reserved. This publication may not be reproduced, in whole or in part, without prior expressed written permission from D-Link Corporation, Inc.

# Table of Contents

|   |           |                                       |           |
|---|-----------|---------------------------------------|-----------|
| <b>Preface</b> .....                        | <b>i</b>  | <b>Technical Specifications</b> ..... | <b>12</b> |
| Trademarks .....                            | i         | <b>Regulatory Statements</b> .....    | <b>16</b> |
| Manual Revisions .....                      | i         |                                       |           |
| <b>Package Contents</b> .....               | <b>1</b>  |                                       |           |
| <b>Introduction</b> .....                   | <b>2</b>  |                                       |           |
| Features .....                              | 3         |                                       |           |
| <b>Hardware Overview</b> .....              | <b>4</b>  |                                       |           |
| Front Panel View .....                      | 4         |                                       |           |
| <b>Rear Panel View</b> .....                | <b>5</b>  |                                       |           |
| <b>LED Indicators</b> .....                 | <b>6</b>  |                                       |           |
| <b>Installation</b> .....                   | <b>7</b>  |                                       |           |
| Before Installing the Media Converter ..... | 7         |                                       |           |
| Standalone Installation .....               | 8         |                                       |           |
| Rack Installation .....                     | 9         |                                       |           |
| <b>Management</b> .....                     | <b>10</b> |                                       |           |
| Monitoring the Media Converter .....        | 10        |                                       |           |
| <b>Link Passthrough Functionality</b> ..... | <b>10</b> |                                       |           |
| Link Loss Carry Forward (LLCF) .....        | 10        |                                       |           |
| Link Loss Return (LLR) .....                | 10        |                                       |           |
| <b>DIP Switches</b> .....                   | <b>11</b> |                                       |           |

# Package Contents



D-Link Media Converter



5 V /1 A Power Adapter



User Manual

If any of the above items are missing, please contact your local reseller.

# Introduction

Thank you and congratulations on the purchase of your new D-Link Media Converter Series device. These standalone plug-and-play converters offer increased flexibility when networking media technologies. The Media Converter Series is divided into two types of models. The DMC-300SC, 515SC, and 530SC convert a copper Fast Ethernet connection to a fiber optic Fast Ethernet connection. The DMC-810SC, 700SC, and 1910 series provide Gigabit Ethernet to Gigabit fiber optic conversion, ideal for expanding more demanding, high-speed networks. The Media Converter Series offers network administrators a variety of solutions to expand networks over a greater distance while maintaining compatibility with existing network equipment.

## Features

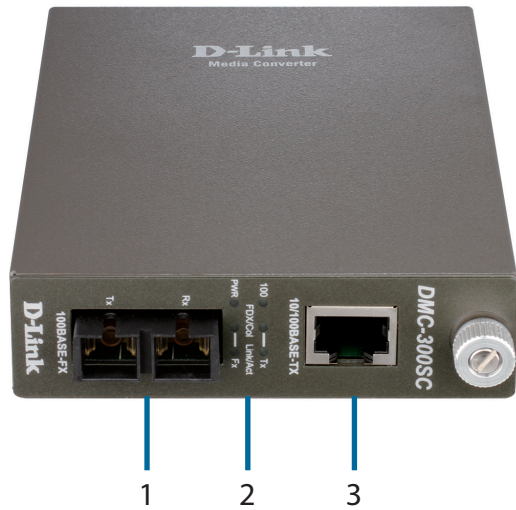
The Media Converter Series is designed to ease installation, increases networking flexibility, and offers high performance. Plug-and-play functionality means these media converters are also low maintenance, requiring no additional management after installation. Use the D-Link Media Converter Series to expand your network as the scale and volume of network traffic increases.

- Compliant with IEEE 802.3/u for 10/100BASE-TX/FX and IEEE 802.3ab/z for 1000BASE-T/SX/LX
- One-channel media conversion between 10/100BASE-TX to 100BASE-FX (DMC-300SC/515SC/530SC), and 1000BASE-T to 1000BASE-SX/LX (DMC-700SC/810SC/1910R,T)
- A variety of models helps you find the perfect media converter to expand your network over longer distances according to your needs
- Can be used as either a standalone converter or can be installed in the specially designed D-Link DMC-1000 chassis
- Hot-swappable when installed in the DMC-1000 chassis
- Provides intelligent troubleshooting functions such as Link Loss Return (LLR) and Link Loss Carry Forward (LLCF)
- Front panel LEDs for easily monitoring the device's status
- Auto-MDI/MDIX
- Full wire-speed forwarding rate

# Hardware Overview

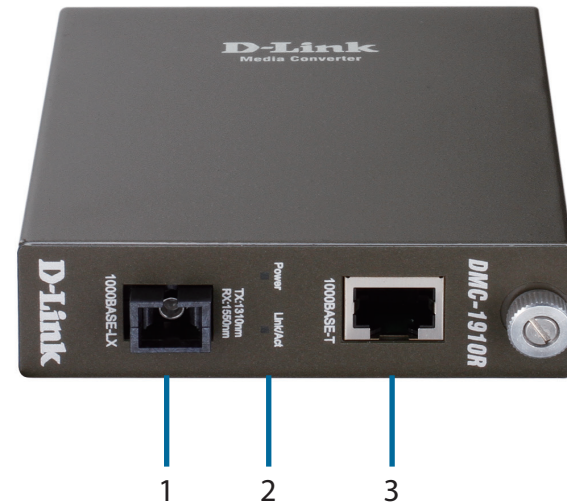
## Front Panel View

**10/100 Mbps Media Converter Series**



|   |                               |
|---|-------------------------------|
| 1 | Tx and Rx SC fiber optic port |
| 2 | Indicator LEDs                |
| 3 | 10/100BASE-T Ethernet port    |

**1000 Mbps Media Converter Series**



|   |  |
|---|--|
| 1 | LC fiber optic port (1910R/T)<br>SC fiber optic port (700SC/810SC) |
| 2 | Indicator LEDs   |
| 3 | 1000BASE-T Ethernet port   |

# Rear Panel View

10/100 Mbps and Gigabit Media Converter Series



1

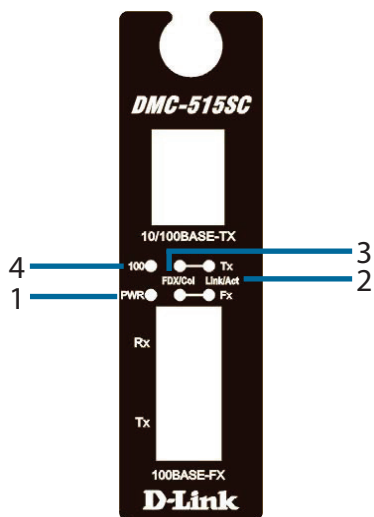
|   |                 |  |
|---|-----------------|--|
| 1 | Power Connector | Input for the supplied 5 V/1 A power adapter |
|---|-----------------|--|



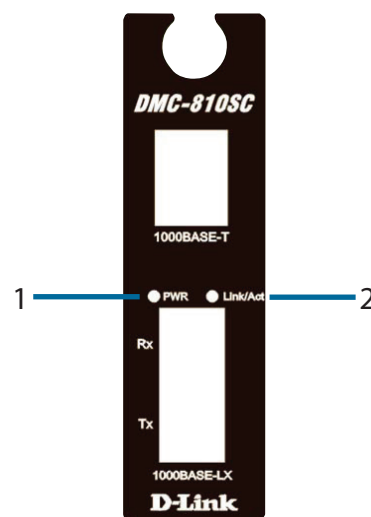
# LED Indicators

Each media converter features front panel display LEDs that give you instant feedback on the status of your device.

10/100 Mbps series LEDs



1000 Mbps series LEDs



|   | LEDs                                     | Status   | Description   |
|---|--|----------|---|
| 1 | PWR (Power)                              | On       | The device is powered on                                  |
|   |  | Off      | The device is powered off                                 |
| 2 | LINK/ACT (Link and Activity)             | On       | The link is active  |
|   |  | Blinking | Transmitting/receiving data                               |
|   |  | Off      | The link is not active                                    |
| 3 | FDX/Col<br>(10/100 Mbps models only)     | On       | The device is using full-duplex mode                      |
|   |  | Blinking | Indicates a collision of data when using half-duplex mode |
|   |  | Off      | The device is using half-duplex                           |
| 4 | 100 (Speed)<br>(10/100 Mbps models only) | On       | The link has negotiated at 100 Mbps                       |
|   |  | Off      | The link has negotiated at 10 Mbps                        |

# Installation

This chapter provides step-by-step instructions on how to install your D-Link Media Converter.

## Before Installing the Media Converter

As with any electrical device, you should place the equipment where it will not be subjected to extreme temperatures, humidity, or electromagnetic interference. Specifically, the site you select should meet the following requirements:

1. The ambient temperature should be between 0 to 40 °C (32 to 104 °F).
2. The environment's relative humidity should be less than 90%, non-condensing.
3. Surrounding electrical devices should not exceed the electromagnetic field (RFC) standards for IEC 801-3, Level 2 (3V/M) field strength.
4. Make sure that the equipment is receiving sufficient ventilation. Do not block the ventilation grates on each side of the converter or the fan exhaust port on the side or rear of the equipment.
5. The power outlet should be within 1.8 meters of the converter.

# Standalone Installation

The D-Link media converters are primarily standalone plug-and-play devices. To use the converter, simply plug the supplied power adapter's DC-jack into the power connector on the back panel of the converter and connect the adapter to a standard AC power outlet. The converter will be ready to use and requires no additional configuration or software. Once the device is powered, the appropriate Ethernet and fiber optic cables can then be connected to the 10/100BASE-TX or 1000BASE-TX, and SC/LC fiber optic ports for connection to the network.

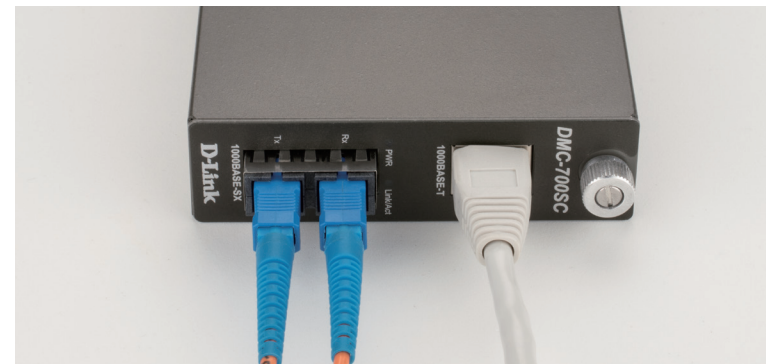
**Step 1:** Connect the DC power plug to the back of the converter.



**Step 2:** Connect the power adapter to a power outlet.



**Step 3:** Connect the copper and fiber cables to the front panel connectors.



# Rack Installation

All of D-Link's media converters can be conveniently mounted in the specially designed DMC-1000 chassis. To install your converter(s) into the chassis, you will need to remove the device from its original housing and install it into the chassis. The following steps will explain you how to install your converter into the carrier.

**Step 1:** Unscrew and remove the media converter board from its original housing using the thumbscrew on the converter's front panel.



**Step 2:** Unscrew and remove the bay cover from any of the vacant slots in the DMC-1000 chassis.



**Step 3:** Place the media converter board into the vacant slot and secure it using the thumbscrew on the converter board.



# Management

## Monitoring the Media Converter

All of the media converters come equipped with front panel LEDs that give you real-time feedback on the status of your device. You can also monitor and manage the media converter(s) that are installed in the DMC-1000 chassis by using the dedicated DMC-1002 Management Module. This module allows the attached media converter(s) to be controlled through Web UI, SNMP, or a terminal emulation program. The management module (DMC-1002) lets you perform several control functions through the chassis system (DMC-1000) such as changing the LLR and fiber mode settings.

## Link Passthrough Functionality

The media converters feature intelligent troubleshooting mechanisms that assist network administrators in quickly diagnosing connection problems in the network.

### Link Loss Carry Forward (LLCF)

When the twisted pair (TP) connection between a connected device and the media converter is lost, the converter's fiber port will disconnect the transmission link so that the receiving media converter in the configuration knows that there is a connection problem on the opposite end. Similarly, when the signal to the fiber port is lost, the media converter will disconnect the TP link. It will then carry the link loss signal over to the management hub so that the administrator can easily identify the source of the problem. LLCF is always enabled by default.

### Link Loss Return (LLR)

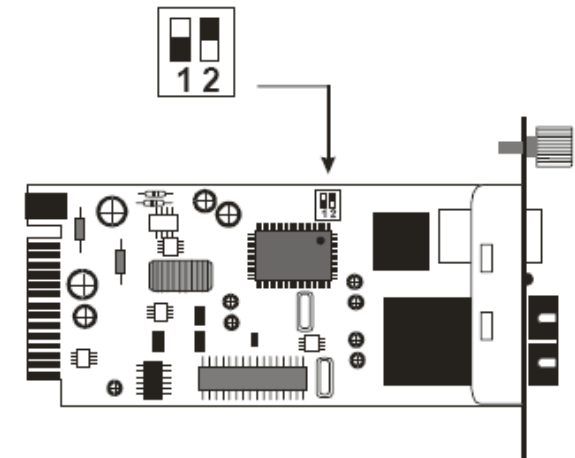
Only available on the 1000 Mbps media converter models, when the fiber link between a connected device and the media converter is lost, the converter's fiber port will stop transmitting and will return a no link signal to its linked partner device. There is a switch to manually enable or disable this function on the media converter board. Consult the chapter "DIP Switches" on the following page for more information.

# DIP Switches

The 1000 Mbps media converters are equipped with a two-pin on-board DIP switch for controlling the Link Loss Return (LLR) and Fiber Mode functions.

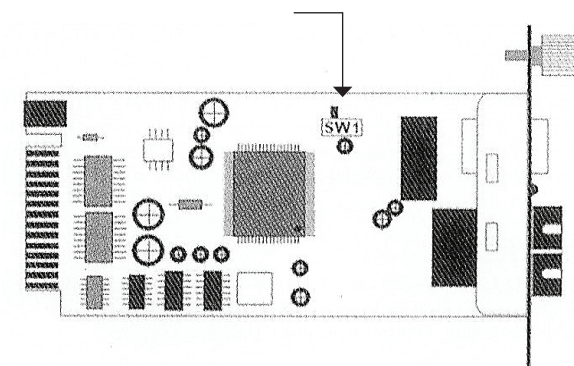
**Switch 1 - Fiber Mode:** This switch allows you to set the fiber optic mode to **Forced** (On) or **Auto-Negotiation** (Off). **Forced** allows you to manually set the duplex mode to half or full while **Auto-Negotiation** lets the media converter decide which duplex mode to use based on the receiving transmission. Make sure that the device at the opposite end is using the same mode. When using two or more media converters at the same time, the fiber mode must be set to **Forced**. This switch is set to off (**Auto-Negotiation**) by default.

**Switch 2 - LLR:** This switch lets you enable or disable the LLR function on the media converter. When you are using more than one converter at the same time, LLR should only be enabled on one converter. This is to prevent the devices from creating a feedback loop. This switch is set to off (LLR disabled) by default.



|                      |                              |
|----------------------|------------------------------|
| Switch 1: Fiber-Mode | On -> Forced Mode            |
|                      | Off -> Auto Negotiation Mode |
| Switch 2: LLR        | On -> LLR enable             |
|                      | Off -> LLR disable           |

The 10/100 Mbps media converters have a single DIP switch for setting the duplex mode on the media converter's fiber port. This can be set to Half-Duplex or Full-Duplex. This switch is set to Full-Duplex by default.



|  |             |  |                       |
|--|-------------|--|-----------------------|
|  | Half Duplex |  | Full Duplex (default) |
|--|-------------|--|-----------------------|

# Technical Specifications

Please refer to the following pages for the technical specifications of the Media Converter Series products. The media converters will be listed under their respective model type, either 10/100 Mbps or 1000 Mbps converters.

## 10/100 Mbps Series Media Converters

| Interface                |  |  |  |
|--------------------------|--|--|--|
|                          | DMC-300SC  | DMC-515SC  | DMC-530SC  |
| Number of Ports          | <ul style="list-style-type: none"> <li>1 x 10/100BASE-TX port</li> <li>1 x 10/100BASE-FX port</li> </ul>   | <ul style="list-style-type: none"> <li>1 x 10/100BASE-TX port</li> <li>1 x 10/100BASE-FX port</li> </ul>   | <ul style="list-style-type: none"> <li>1 x 10/100BASE-TX port</li> <li>1 x 10/100BASE-FX port</li> </ul>   |
| Standards                | <ul style="list-style-type: none"> <li>IEEE 802.3 for 10BASE-TX</li> <li>IEEE 802.3u for 100BASE-TX/FX</li> </ul>  | <ul style="list-style-type: none"> <li>IEEE 802.3 for 10BASE-TX</li> <li>IEEE 802.3u for 100BASE-TX/FX</li> </ul>  | <ul style="list-style-type: none"> <li>IEEE 802.3 for 10BASE-TX</li> <li>IEEE 802.3u for 100BASE-TX/FX</li> </ul>  |
| Data Transfer Rate       | <ul style="list-style-type: none"> <li>10 Mbps/20 Mbps (Half-duplex/full-duplex)</li> <li>100 Mbps/200 Mbps (Half-duplex/full-duplex)</li> </ul>   | <ul style="list-style-type: none"> <li>10 Mbps/20 Mbps (Half-duplex/full-duplex)</li> <li>100 Mbps/200 Mbps (Half-duplex/full-duplex)</li> </ul>   | <ul style="list-style-type: none"> <li>10 Mbps/20 Mbps (Half-duplex/full-duplex)</li> <li>100 Mbps/200 Mbps (Half-duplex/full-duplex)</li> </ul>   |
| Duplex Mode              | <ul style="list-style-type: none"> <li>Half-duplex/full-duplex</li> </ul>  | <ul style="list-style-type: none"> <li>Half-duplex/full-duplex</li> </ul>  | <ul style="list-style-type: none"> <li>Half-duplex/full-duplex</li> </ul>  |
| Network Cables           | <ul style="list-style-type: none"> <li>10BASE-T: 2-pair UTP Cat. 3/4/5/5e, Unshielded Twisted Pair (UTP) Cable (up to 100 m)</li> <li>10/100BASE-TX: 2-pair UTP Cat. 5/5e, Unshielded Twisted Pair (UTP) Cable (up to 100 m)</li> <li>100BASE-FX: Multi-mode fiber optic cable (up to 2 km)</li> <li>100BASE-FX: Single-mode fiber optic cable (up to 100 km)</li> </ul> | <ul style="list-style-type: none"> <li>10BASE-T: 2-pair UTP Cat. 3/4/5/5e, Unshielded Twisted Pair (UTP) Cable (up to 100 m)</li> <li>10/100BASE-TX: 2-pair UTP Cat. 5/5e, Unshielded Twisted Pair (UTP) Cable (up to 100 m)</li> <li>100BASE-FX: Multi-mode fiber optic cable (up to 2 km)</li> <li>100BASE-FX: Single-mode fiber optic cable (up to 100 km)</li> </ul> | <ul style="list-style-type: none"> <li>10BASE-T: 2-pair UTP Cat. 3/4/5/5e, Unshielded Twisted Pair (UTP) Cable (up to 100 m)</li> <li>10/100BASE-TX: 2-pair UTP Cat. 5/5e, Unshielded Twisted Pair (UTP) Cable (up to 100 m)</li> <li>100BASE-FX: Multi-mode fiber optic cable (up to 2 km)</li> <li>100BASE-FX: Single-mode fiber optic cable (up to 100 km)</li> </ul> |
| Media Exchange Interface | <ul style="list-style-type: none"> <li>Auto MDI/MDIX</li> </ul>  | <ul style="list-style-type: none"> <li>Auto MDI/MDIX</li> </ul>  | <ul style="list-style-type: none"> <li>Auto MDI/MDIX</li> </ul>  |
| Functionality            |  |  |  |
| Transmission Mode        | <ul style="list-style-type: none"> <li>Store-and-forward</li> </ul>  | <ul style="list-style-type: none"> <li>Store-and-forward</li> </ul>  | <ul style="list-style-type: none"> <li>Store-and-forward</li> </ul>  |
| Forwarding Rate          | <ul style="list-style-type: none"> <li>Full wire-speed forwarding rate</li> </ul>  | <ul style="list-style-type: none"> <li>Full wire-speed forwarding rate</li> </ul>  | <ul style="list-style-type: none"> <li>Full wire-speed forwarding rate</li> </ul>  |
| Management               | <ul style="list-style-type: none"> <li>Through the DMC-1000 Chassis with the DMC-1002 Management Module installed</li> </ul>   | <ul style="list-style-type: none"> <li>Through the DMC-1000 Chassis with the DMC-1002 Management Module installed</li> </ul>   | <ul style="list-style-type: none"> <li>Through the DMC-1000 Chassis with the DMC-1002 Management Module installed</li> </ul>   |
| Management Functions     | <ul style="list-style-type: none"> <li>Fiber (Half-Duplex/Full-Duplex)</li> </ul>  | <ul style="list-style-type: none"> <li>Fiber (Half-Duplex/Full-Duplex)</li> </ul>  | <ul style="list-style-type: none"> <li>Fiber (Half-Duplex/Full-Duplex)</li> </ul>  |
| Physical                 |  |  |  |
| LEDs                     | <ul style="list-style-type: none"> <li>Power</li> <li>Speed (for twisted pair ports)</li> <li>Full-Duplex/Collision (for twisted pair and fiber ports)</li> <li>LINK/ACT (for twisted pair ports)</li> </ul>   | <ul style="list-style-type: none"> <li>Power</li> <li>Speed (for twisted pair ports)</li> <li>Full-Duplex/Collision (for twisted pair and fiber ports)</li> <li>LINK/ACT (for twisted pair ports)</li> </ul>   | <ul style="list-style-type: none"> <li>Power</li> <li>Speed (for twisted pair ports)</li> <li>Full-Duplex/Collision (for twisted pair and fiber ports)</li> <li>LINK/ACT (for twisted pair ports)</li> </ul>   |
| AC Input                 | <ul style="list-style-type: none"> <li>5 V, 1 A External power adapter</li> </ul>  | <ul style="list-style-type: none"> <li>5 V, 1 A External power adapter</li> </ul>  | <ul style="list-style-type: none"> <li>5 V, 1 A External power adapter</li> </ul>  |
| Operating Temperature    | <ul style="list-style-type: none"> <li>0 °C to 40 °C (32 °F to 104 °F)</li> </ul>  | <ul style="list-style-type: none"> <li>0 °C to 40 °C (32 °F to 104 °F)</li> </ul>  | <ul style="list-style-type: none"> <li>0 °C to 40 °C (32 °F to 104 °F)</li> </ul>  |
| Storage Temperature      | <ul style="list-style-type: none"> <li>-25 °C to 70 °C (13 °F to 158 °F)</li> </ul>  | <ul style="list-style-type: none"> <li>-25 °C to 70 °C (13 °F to 158 °F)</li> </ul>  | <ul style="list-style-type: none"> <li>-25 °C to 70 °C (13 °F to 158 °F)</li> </ul>  |

## Appendix A - Technical Specifications

---

|                               |  |  |  |
|-------------------------------|--|--|--|
| Operating Humidity            | • 10% to 90% RH, non-condensing                | • 10% to 90% RH, non-condensing                | • 10% to 90% RH, non-condensing                |
| Dimensions                    | • 120 x 88 x 25 mm (4.72 x 3.46 x 0.98 inches) | • 120 x 88 x 25 mm (4.72 x 3.46 x 0.98 inches) | • 120 x 88 x 25 mm (4.72 x 3.46 x 0.98 inches) |
| Weight                        | • 291 g (0.64 lbs)                             | • 292 g (0.64 lbs)                             | • 292 g (0.64 lbs)                             |
| Fiber Wavelength              | • 1310 nm                                      | • 1310 nm                                      | • 1310 nm                                      |
| Supported Fiber Cable Length  | • Up to 2 km                                   | • Up to 15 km                                  | • Up to 30 km                                  |
| Emission Certifications (EMI) | • FCC Class A, CE Class A, VCCI Class A        | • FCC Class A, CE Class A, VCCI Class A        | • FCC Class A, CE Class A, VCCI Class A        |



### 1000 Mbps Series Media Converters

| Interface                     |   |   |
|-------------------------------|---|---|
|                               | DMC-700SC   | DMC-810SC   |
| Number of Ports               | <ul style="list-style-type: none"> <li>1 x 1000BASE-T with RJ45 connector</li> <li>1 x 1000BASE-SX/LX with SC connector</li> </ul>  | <ul style="list-style-type: none"> <li>1 x 1000BASE-T with RJ45 connector</li> <li>1 x 1000BASE-SX/LX with SC connector</li> </ul>  |
| Standards                     | <ul style="list-style-type: none"> <li>IEEE 802.3ab for 1000BASE-TX</li> <li>IEEE 802.3z for 1000BASE-SX/LX</li> </ul>  | <ul style="list-style-type: none"> <li>IEEE 802.3ab for 1000BASE-TX</li> <li>IEEE 802.3z for 1000BASE-SX/LX</li> </ul>  |
| Data Transfer Rate            | <ul style="list-style-type: none"> <li>2000 Mbps (Full-duplex)</li> </ul>   | <ul style="list-style-type: none"> <li>2000 Mbps (Full-duplex)</li> </ul>   |
| Duplex Mode                   | <ul style="list-style-type: none"> <li>Full-duplex</li> </ul>   | <ul style="list-style-type: none"> <li>Full-duplex</li> </ul>   |
| Network Cables                | <ul style="list-style-type: none"> <li>1000BASE-T: 4 pair Cat. 5, screened twisted-pair (STP) (up to 100 m)</li> <li>1000BASE-SX: Multi-mode fiber optic cable (up to 550 m)</li> <li>1000BASE-LX: Single-mode fiber optic cable (up to 70 km)</li> </ul> | <ul style="list-style-type: none"> <li>1000BASE-T: 4 pair Cat. 5, screened twisted-pair (STP) (up to 100 m)</li> <li>1000BASE-SX: Multi-mode fiber optic cable (up to 550 m)</li> <li>1000BASE-LX: Single-mode fiber optic cable (up to 70 km)</li> </ul> |
| Media Exchange Interface      | <ul style="list-style-type: none"> <li>Auto MDI/MDIX</li> </ul>   | <ul style="list-style-type: none"> <li>Auto MDI/MDIX</li> </ul>   |
| Functionality                 |   |   |
| Transmission Mode             | <ul style="list-style-type: none"> <li>Store-and-forward</li> </ul>   | <ul style="list-style-type: none"> <li>Store-and-forward</li> </ul>   |
| Forwarding Rate               | <ul style="list-style-type: none"> <li>Full wire-speed forwarding rate</li> </ul>   | <ul style="list-style-type: none"> <li>Full wire-speed forwarding rate</li> </ul>   |
| Management                    | <ul style="list-style-type: none"> <li>Through the DMC-1000 Chassis with the DMC-1002 Management Module installed</li> </ul>  | <ul style="list-style-type: none"> <li>Through the DMC-1000 Chassis with the DMC-1002 Management Module installed</li> </ul>  |
| Management Functions          | <ul style="list-style-type: none"> <li>LLR (Enable/Disable)</li> <li>Fiber (Auto Negotiation/Manual)</li> </ul>   | <ul style="list-style-type: none"> <li>LLR (Enable/Disable)</li> <li>Fiber (Auto Negotiation/Manual)</li> </ul>   |
| Physical                      |   |   |
| LEDs                          | <ul style="list-style-type: none"> <li>Power</li> <li>LINK/ACT</li> </ul>   | <ul style="list-style-type: none"> <li>Power</li> <li>LINK/ACT</li> </ul>   |
| AC Input                      | <ul style="list-style-type: none"> <li>5 V, 1 A External power adapter</li> </ul>   | <ul style="list-style-type: none"> <li>5 V, 1 A External power adapter</li> </ul>   |
| Operating Temperature         | <ul style="list-style-type: none"> <li>0 °C to 40 °C (32 °F to 104 °F)</li> </ul>   | <ul style="list-style-type: none"> <li>0 °C to 40 °C (32 °F to 104 °F)</li> </ul>   |
| Storage Temperature           | <ul style="list-style-type: none"> <li>-25 °C to 70 °C (13 °F to 158 °F)</li> </ul>   | <ul style="list-style-type: none"> <li>-25 °C to 70 °C (13 °F to 158 °F)</li> </ul>   |
| Operating Humidity            | <ul style="list-style-type: none"> <li>10% to 90% RH, non-condensing</li> </ul>   | <ul style="list-style-type: none"> <li>10% to 90% RH, non-condensing</li> </ul>   |
| Dimensions                    | <ul style="list-style-type: none"> <li>120 x 88 x 25 mm (4.72 x 3.46 x 0.98 inches)</li> </ul>  | <ul style="list-style-type: none"> <li>120 x 88 x 25 mm (4.72 x 3.46 x 0.98 inches)</li> </ul>  |
| Weight                        | <ul style="list-style-type: none"> <li>302 g (0.67 lbs)</li> </ul>  | <ul style="list-style-type: none"> <li>297 g (0.65 lbs)</li> </ul>  |
| Fiber Wavelength              | <ul style="list-style-type: none"> <li>850 nm</li> </ul>  | <ul style="list-style-type: none"> <li>1310 nm</li> </ul>   |
| Supported Fiber Cable Length  | <ul style="list-style-type: none"> <li>Up to 550 m</li> </ul>   | <ul style="list-style-type: none"> <li>Up to 20 km</li> </ul>   |
| Emission Certifications (EMI) | <ul style="list-style-type: none"> <li>FCC Class A, CE Class A, VCCI Class A</li> </ul>   | <ul style="list-style-type: none"> <li>FCC Class A, CE Class A, VCCI Class A</li> </ul>   |

## Appendix A - Technical Specifications

| Interface                     |  |  |
|-------------------------------|--|--|
|                               | DMC-1910R  | DMC-1910T  |
| Numer of Ports                | <ul style="list-style-type: none"> <li>1 x 1000BASE-T with RJ45 connector</li> <li>1 x 1000BASE-LX Signal-fiber bi-directional with SC connector</li> </ul>                              | <ul style="list-style-type: none"> <li>1 x 1000BASE-T with RJ45 connector</li> <li>1 x 1000BASE-LX Signal-fiber bi-directional with SC connector</li> </ul>                              |
| Standards                     | <ul style="list-style-type: none"> <li>IEEE 802.3ab for 1000BASE-T</li> <li>IEEE 802.3z for 1000BASE-LX</li> </ul>   | <ul style="list-style-type: none"> <li>IEEE 802.3ab for 1000BASE-T</li> <li>IEEE 802.3z for 1000BASE-LX</li> </ul>   |
| Data Transfer Rate            | <ul style="list-style-type: none"> <li>2000 Mbps (Full-duplex)</li> </ul>  | <ul style="list-style-type: none"> <li>2000 Mbps (Full-duplex)</li> </ul>  |
| Duplex Mode                   | <ul style="list-style-type: none"> <li>Full-duplex</li> </ul>  | <ul style="list-style-type: none"> <li>Full-duplex</li> </ul>  |
| Network Cables                | <ul style="list-style-type: none"> <li>1000BASE-T: 4 pair Cat. 5, screened twisted-pair (STP) (up to 100 m)</li> <li>1000BASE-LX: Single-mode fiber optic cable (up to 60 km)</li> </ul> | <ul style="list-style-type: none"> <li>1000BASE-T: 4 pair Cat. 5, screened twisted-pair (STP) (up to 100 m)</li> <li>1000BASE-LX: Single-mode fiber optic cable (up to 60 km)</li> </ul> |
| Media Exchange Interface      | <ul style="list-style-type: none"> <li>Auto MDI/MDIX</li> </ul>  | <ul style="list-style-type: none"> <li>Auto MDI/MDIX</li> </ul>  |
| Functionality                 |  |  |
| Transmission Mode             | <ul style="list-style-type: none"> <li>Store-and-forward</li> </ul>  | <ul style="list-style-type: none"> <li>Store-and-forward</li> </ul>  |
| Forwarding Rate               | <ul style="list-style-type: none"> <li>Full wire-speed forwarding rate</li> </ul>  | <ul style="list-style-type: none"> <li>Full wire-speed forwarding rate</li> </ul>  |
| Management                    | <ul style="list-style-type: none"> <li>Through the DMC-1000 Chassis with the DMC-1002 Management Module installed</li> </ul>   | <ul style="list-style-type: none"> <li>Through the DMC-1000 Chassis with the DMC-1002 Management Module installed</li> </ul>   |
| Management Functions          | <ul style="list-style-type: none"> <li>LLR (Enable/Disable)</li> <li>Fiber (Auto Negotiation/Manual)</li> </ul>  | <ul style="list-style-type: none"> <li>LLR (Enable/Disable)</li> <li>Fiber (Auto Negotiation/Manual)</li> </ul>  |
| Physical                      |  |  |
| LEDs                          | <ul style="list-style-type: none"> <li>Power</li> <li>LINK/ACT</li> </ul>  | <ul style="list-style-type: none"> <li>Power</li> <li>LINK/ACT</li> </ul>  |
| AC Input                      | <ul style="list-style-type: none"> <li>5 V, 1 A External power adapter</li> </ul>  | <ul style="list-style-type: none"> <li>5 V, 1 A External power adapter</li> </ul>  |
| Operating Temperature         | <ul style="list-style-type: none"> <li>0 °C to 40 °C (32 °F to 104 °F)</li> </ul>  | <ul style="list-style-type: none"> <li>0 °C to 40 °C (32 °F to 104 °F)</li> </ul>  |
| Storage Temperature           | <ul style="list-style-type: none"> <li>-10 °C to 70 °C (32 °F to 158 °F)</li> </ul>  | <ul style="list-style-type: none"> <li>-10 °C to 70 °C (32 °F to 158 °F)</li> </ul>  |
| Operating Humidity            | <ul style="list-style-type: none"> <li>10% to 90% RH, non-condensing</li> </ul>  | <ul style="list-style-type: none"> <li>10% to 90% RH, non-condensing</li> </ul>  |
| Dimensions                    | <ul style="list-style-type: none"> <li>120 x 88 x 25 mm (4.72 x 3.46 x 0.98 inches)</li> </ul>   | <ul style="list-style-type: none"> <li>120 x 88 x 25 mm (4.72 x 3.46 x 0.98 inches)</li> </ul>   |
| Weight                        | <ul style="list-style-type: none"> <li>300 g (0.66 lbs)</li> </ul>   | <ul style="list-style-type: none"> <li>295 g (0.65 lbs)</li> </ul>   |
| Fiber Wavelength              | <ul style="list-style-type: none"> <li>TX: 1310 nm</li> <li>RX: 1550 nm</li> </ul>   | <ul style="list-style-type: none"> <li>TX: 1550 nm</li> <li>RX: 1310 nm</li> </ul>   |
| Supported Fiber Cable Length  | <ul style="list-style-type: none"> <li>Up to 10 km</li> </ul>  | <ul style="list-style-type: none"> <li>Up to 10 km</li> </ul>  |
| Emission Certifications (EMI) | <ul style="list-style-type: none"> <li>FCC Class A, VCCI Class A, CE Class A</li> </ul>  | <ul style="list-style-type: none"> <li>FCC Class A, VCCI Class A, CE Class A</li> </ul>  |

# Regulatory Statements

## Federal Communication Commission Interference Statement

This equipment has been tested and found to comply with the limits for a Class A digital device, pursuant to part 15 of the FCC Rules. These limits are designed to provide reasonable protection against harmful interference when the equipment is operated in a commercial environment. This equipment generates, uses, and can radiate radio frequency energy and, if not installed and used in accordance with the instruction manual, may cause harmful interference to radio communications. Operation of this equipment in a residential area is likely to cause harmful interference in which case the user will be required to correct the interference at his own expense.

## Non-modification Statement

Any changes or modifications not expressly approved by the party responsible for compliance could void the user's authority to operate the equipment.

## Caution

This device complies with Part 15 of the FCC Rules. Operation is subject to the following two conditions:

(1) This device may not cause harmful interference, and (2) this device must accept any interference received, including interference that may cause undesired operation.

## Japan Voluntary Control Council for Interference Statement

この装置は、クラス A 情報技術装置です。この装置を家庭環境で使用すると電波妨害を引き起こすことがあります。この場合には使用者が適切な対策を講ずるよう要求されることがあります。

VCCI-A

## Japan Voluntary Control Council for Interference Statement

This is a Class A product based on the standard of the Voluntary Control Council for Interference (VCCI). If this equipment is used in a domestic environment, radio interference may occur, in which case the user may be required to take corrective actions.

## CE EMI Class A Warning

Warning: This is a class A product. In a domestic environment this product may cause radio interference in which case the user may be required to take adequate measures.



# Disposing of and Recycling Your Product

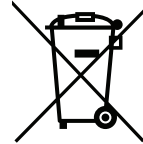


## ENGLISH



This symbol on the product or packaging means that according to local laws and regulations this product should not be disposed of in household waste but sent for recycling. Please take it to a collection point designated by your local authorities once it has reached the end of its life, some will accept products for free. By recycling the product and its packaging in this manner you help to conserve the environment and protect human health.

## EN FRANÇAIS



Ce symbole apposé sur le produit ou son emballage signifie que, conformément aux lois et réglementations locales, ce produit ne doit pas être éliminé avec les déchets domestiques mais recyclé. Veuillez le rapporter à un point de collecte prévu à cet effet par les autorités locales; certains accepteront vos produits gratuitement. En recyclant le produit et son emballage de cette manière, vous aidez à préserver l'environnement et à protéger la santé de l'homme.

## FR

## D-Link and the Environment

At D-Link, we understand and are committed to reducing any impact our operations and products may have on the environment. To minimise this impact D-Link designs and builds its products to be as environmentally friendly as possible, by using recyclable, low toxic materials in both products and packaging.

D-Link recommends that you always switch off or unplug your D-Link products when they are not in use. By doing so you will help to save energy and reduce CO2 emissions.

To learn more about our environmentally responsible products and packaging please visit [www.dlinkgreen.com](http://www.dlinkgreen.com).

## D-Link et l'environnement

Chez D-Link, nous sommes conscients de l'impact de nos opérations et produits sur l'environnement et nous engageons à le réduire. Pour limiter cet impact, D-Link conçoit et fabrique ses produits de manière aussi écologique que possible, en utilisant des matériaux recyclables et faiblement toxiques, tant dans ses produits que ses emballages.

D-Link recommande de toujours éteindre ou débrancher vos produits D-Link lorsque vous ne les utilisez pas. Vous réaliserez ainsi des économies d'énergie et réduirez vos émissions de CO2.

Pour en savoir plus sur les produits et emballages respectueux de l'environnement, veuillez consulter le [www.dlinkgreen.com](http://www.dlinkgreen.com).

## DEUTSCH



Dieses Symbol auf dem Produkt oder der Verpackung weist darauf hin, dass dieses Produkt gemäß bestehender örtlicher Gesetze und Vorschriften nicht über den normalen Hausmüll entsorgt werden sollte, sondern einer Wiederverwertung zuzuführen ist. Bringen Sie es bitte zu einer von Ihrer Kommunalbehörde entsprechend amtlich ausgewiesenen Sammelstelle, sobald das Produkt das Ende seiner Nutzungsdauer erreicht hat. Für die Annahme solcher Produkte erheben einige dieser Stellen keine Gebühren. Durch ein auf diese Weise durchgeführtes Recycling des Produkts und seiner Verpackung helfen Sie, die Umwelt zu schonen und die menschliche Gesundheit zu schützen.

## DE ESPAÑOL



Este símbolo en el producto o el embalaje significa que, de acuerdo con la legislación y la normativa local, este producto no se debe desechar en la basura doméstica sino que se debe reciclar. Lívelo a un punto de recogida designado por las autoridades locales una vez que ha llegado al fin de su vida útil; algunos de ellos aceptan recogerlos de forma gratuita. Al reciclar el producto y su embalaje de esta forma, contribuye a preservar el medio ambiente y a proteger la salud de los seres humanos.

## ES

## D-Link und die Umwelt

D-Link ist sich den möglichen Auswirkungen seiner Geschäftstätigkeiten und seiner Produkte auf die Umwelt bewusst und fühlt sich verpflichtet, diese entsprechend zu mindern. Zu diesem Zweck entwickelt und stellt D-Link seine Produkte mit dem Ziel größtmöglicher Umweltfreundlichkeit her und verwendet wiederverwertbare, schadstoffarme Materialien bei Produktherstellung und Verpackung.

D-Link empfiehlt, Ihre Produkte von D-Link, wenn nicht in Gebrauch, immer auszuschalten oder vom Netz zu nehmen. Auf diese Weise helfen Sie, Energie zu sparen und CO2-Emissionen zu reduzieren.

Wenn Sie mehr über unsere umweltgerechten Produkte und Verpackungen wissen möchten, finden Sie entsprechende Informationen im Internet unter [www.dlinkgreen.com](http://www.dlinkgreen.com).

## D-Link y el medio ambiente

En D-Link, comprendemos y estamos comprometidos con la reducción del impacto que puedan tener nuestras actividades y nuestros productos en el medio ambiente. Para reducir este impacto, D-Link diseña y fabrica sus productos para que sean lo más ecológicos posible, utilizando materiales reciclables y de baja toxicidad tanto en los productos como en el embalaje.

D-Link recomienda apagar o desenchufar los productos D-Link cuando no se estén utilizando. Al hacerlo, contribuirá a ahorrar energía y a reducir las emisiones de CO2.

Para obtener más información acerca de nuestros productos y embalajes ecológicos, visite el sitio [www.dlinkgreen.com](http://www.dlinkgreen.com).

## ITALIANO



La presenza di questo simbolo sul prodotto o sulla confezione del prodotto indica che, in conformità alle leggi e alle normative locali, questo prodotto non deve essere smaltito nei rifiuti domestici, ma avviato al riciclo. Una volta terminato il ciclo di vita utile, portare il prodotto presso un punto di raccolta indicato dalle autorità locali. Alcuni questi punti di raccolta accettano gratuitamente i prodotti da riciclare. Scegliendo di riciclare il prodotto e il relativo imballaggio, si contribuirà a preservare l'ambiente e a salvaguardare la salute umana.

## D-Link e l'ambiente

D-Link cerca da sempre di ridurre l'impatto ambientale dei propri stabilimenti e dei propri prodotti. Allo scopo di ridurre al minimo tale impatto, D-Link progetta e realizza i propri prodotti in modo che rispettino il più possibile l'ambiente, utilizzando materiali riciclabili a basso tasso di tossicità sia per i prodotti che per gli imballaggi.

D-Link raccomanda di spegnere sempre i prodotti D-Link o di scollegarne la spina quando non vengono utilizzati. In questo modo si contribuirà a risparmiare energia e a ridurre le emissioni di anidride carbonica.

Per ulteriori informazioni sui prodotti e sugli imballaggi D-Link a ridotto impatto ambientale, visitate il sito all'indirizzo [www.dlinkgreen.com](http://www.dlinkgreen.com).

## NEDERLANDS



Dit symbool op het product of de verpakking betekent dat dit product volgens de plaatselijke wetgeving niet mag worden weggegooid met het huishoudelijk afval, maar voor recycling moeten worden ingeleverd. Zodra het product het einde van de levensduur heeft bereikt, dient u het naar een inzamelpunt te brengen dat hiertoe werd aangeduid door uw plaatselijke autoriteiten, sommige autoriteiten accepteren producten zonder dat u hiervoor dient te betalen. Door het product en de verpakking op deze manier te recyclen helpt u het milieu en de gezondheid van de mens te beschermen.

## D-Link en het milieu

Bij D-Link spannen we ons in om de impact van onze handelingen en producten op het milieu te beperken. Om deze impact te beperken, ontwerpt en bouwt D-Link zijn producten zo milieuvriendelijk mogelijk, door het gebruik van recycleerbare producten met lage toxiciteit in product en verpakking.

D-Link raadt aan om steeds uw D-Link producten uit te schakelen of uit de stekker te halen wanneer u ze niet gebruikt. Door dit te doen bespaart u energie en beperkt u de CO<sub>2</sub>-emissies.

Breng een bezoek aan [www.dlinkgreen.com](http://www.dlinkgreen.com) voor meer informatie over onze milieuverantwoorde producten en verpakkingen.

## IT POLSKI



Ten symbol umieszczony na produkcie lub opakowaniu oznacza, że zgodnie z miejscowym prawem i lokalnymi przepisami niniejszego produktu nie wolno wyrzucać jak odpady czy śmieci z gospodarstwa domowego, lecz należy go poddać procesowi recyklingu. Po zakończeniu użytkowania produktu, niektóre odpowiednie do tego celu podmioty przyjmą takie produkty nieodpłatnie, dlatego prosimy dostarczyć go do punktu zbiórki wskazanego przez lokalne władze. Poprzez proces recyklingu i dzięki takiemu postępowaniu z produktem oraz jego opakowaniem, pomogą Państwo chronić środowisko naturalne i dbać o ludzkie zdrowie.

## D-Link i środowisko

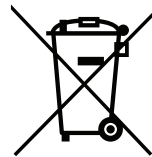
D-Link podchodzimy w sposób świadomy do ochrony otoczenia oraz jesteśmy zaangażowani w zmniejszanie wpływu naszych działań i produktów na środowisko naturalne. W celu zminimalizowania takiego wpływu firma D-Link konstruuje i wytwarza swoje produkty w taki sposób, aby były one jak najbardziej przyjazne środowisku, stosując do tych celów materiały nadające się do powtórnego wykorzystania, charakteryzujące się małą toksycznością zarówno w przypadku samych produktów jak i opakowań.

Firma D-Link zaleca, aby Państwo zawsze prawidłowo wyłączali z użytku swoje produkty D-Link, gdy nie są one wykorzystywane. Postępując w ten sposób pozwalają Państwo oszczędzać energię i zmniejszać emisje CO<sub>2</sub>.

Aby dowiedzieć się więcej na temat produktów i opakowań mających wpływ na środowisko prosimy zapoznać się ze stroną Internetową [www.dlinkgreen.com](http://www.dlinkgreen.com).

## NL

## ČESKÝ



Tento symbol na výrobku nebo jeho obalu znamená, že podle místně platných předpisů se výrobek nesmí vyhazovat do komunálního odpadu, ale odeslat k recyklaci. Až výrobek doslouží, odnese jej prosím na sběrné místo určené místními úřady k tomuto účelu. Některá sběrná místa přijímají výrobky zdarma. Recyklací výrobku i obalu pomáháte chránit životní prostředí i lidské zdraví.

## PL

## CZ

## D-Link a životní prostředí

Ve společnosti D-Link jsme si vědomi vlivu našich provozů a výrobků na životní prostředí a snažíme se o minimalizaci těchto vlivů. Proto své výrobky navrhujeme a vyrábíme tak, aby byly co neekologičtější, a ve výrobcích i obalech používáme recyklovatelné a nízkotoxické materiály.

Společnost D-Link doporučuje, abyste své výrobky značky D-Link vypnuli nebo vytáhli ze zásuvky vždy, když je nepoužíváte. Pomůžete tak šetřit energii a snížit emise CO<sub>2</sub>.

Více informací o našich ekologických výrobcích a obalech najdete na adrese [www.dlinkgreen.com](http://www.dlinkgreen.com).

## MAGYAR



Ez a szimbólum a terméken vagy a csomagoláson azt jelenti, hogy a helyi törvényeknek és szabályoknak megfelelően ez a termék nem semmisíthető meg a háztartási hulladékkal együtt, hanem újrahasznosításra kell küldeni. Kérjük, hogy a termék élettartamának elteltét követően vigye azt a helyi hatóság által kijelölt gyűjtőhelyre. A termékek egyes helyeken ingyen elhelyezhetők. A termék és a csomagolás újrahasznosításával segíti védeni a környezetet és az emberek egészségét.

## A D-Link és a környezet

A D-Linknél megértjük és elköteleztük magunkat a műveleteink és termékeink környezetre gyakorolt hatásainak csökkentésére. Az ezen hatás csökkentése érdekében a D-Link a lehető leginkább környezetbarát termékeket tervez és gyárt azáltal, hogy újrahasznosítható, alacsony károsanyag-tartalmú termékeket gyárt és csomagolásokat alkalmaz.

A D-Link azt javasolja, hogy mindig kapcsolja ki vagy húzza ki a D-Link termékeket a tápforrásból, ha nem használja azokat. Ezzel segít az energia megtakarításában és a széndioxid kibocsátásának csökkentésében.

Környezetbarát termékeinkről és csomagolásainkról további információkat a [www.dlinkgreen.com](http://www.dlinkgreen.com) weboldalon tudhat meg.

## NORSK



Dette symbolet på produktet eller forpakningen betyr at dette produktet ifølge lokale lover og forskrifter ikke skal kastes sammen med husholdningsavfall, men leveres inn til gjenvinning. Vennligst ta det til et innsamlingssted anvist av lokale myndigheter når det er kommet til slutten av levetiden. Noen steder aksepteres produkter uten avgift. Ved på denne måten å gjenvinne produktet og forpakningen hjelper du å verne miljøet og beskytte folks helse.

## D-Link og miljøet

Hos D-Link forstår vi oss på og er forpliktet til å minske innvirkningen som vår drift og våre produkter kan ha på miljøet. For å minimalisere denne innvirkningen designer og lager D-Link produkter som er så miljøvennlig som mulig, ved å bruke resirkulerbare, lav-toksiske materialer både i produktene og forpakningen.

D-Link anbefaler at du alltid slår av eller frakobler D-Link-produkter når de ikke er i bruk. Ved å gjøre dette hjelper du å spare energi og å redusere CO<sub>2</sub>-utslipp.

For mer informasjon angående våre miljøansvarlige produkter og forpakninger kan du gå til [www.dlinkgreen.com](http://www.dlinkgreen.com).

## HU DANSK



Dette symbol på produktet eller emballagen betyder, at dette produkt i henhold til lokale love og regler ikke må bortskaffes som husholdningsaffald, mens skal sendes til genbrug. Indlever produktet til et indsamlingssted som angivet af de lokale myndigheder, når det er nået til slutningen af dets levetid. I nogle tilfælde vil produktet blive modtaget gratis. Ved at indlevere produktet og dets emballage til genbrug på denne måde bidrager du til at beskytte miljøet og den menneskelige sundhed.

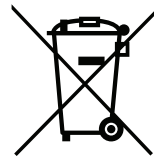
## D-Link og miljøet

Hos D-Link forstår vi og bestræber os på at reducere enhver indvirkning, som vores aktiviteter og produkter kan have på miljøet. For at minimere denne indvirkning designer og producerer D-Link sine produkter, så de er så miljøvenlige som muligt, ved at bruge genanvendelige materialer med lavt giftighedsniveau i både produkter og emballage.

D-Link anbefaler, at du altid slukker eller frakobler dine D-Link-produkter, når de ikke er i brug. Ved at gøre det bidrager du til at spare energi og reducere CO<sub>2</sub>-udledningerne.

Du kan finde flere oplysninger om vores miljømæssigt ansvarlige produkter og emballage på [www.dlinkgreen.com](http://www.dlinkgreen.com).

## SUOMI



Tämä symboli tuotteen pakkauksessa tarkoittaa, että paikallisten lakien ja säännösten mukaisesti tätä tuotetta ei pidä hävittää yleisen kotitalousjätteen seassa vaan se tulee toimittaa kierrätettäväksi. Kun tuote on elinkaarensa päässä, toimita se lähimpään viranomaisten hyväksymään kierrätyspisteeseen. Kierrättämällä käytetyn tuotteen ja sen pakkauksen autat tukemaan sekä ympäristön että ihmisten terveyttä ja hyvinvointia.

## D-Link ja ympäristö

D-Link ymmärtää ympäristönsuojelun tärkeyden ja on sitoutunut vähentämään tuotteistaan ja niiden valmistuksesta ympäristölle mahdollisesti aiheutuvia haittavaikutuksia. Nämä negatiiviset vaikutukset minimoidakseen D-Link suunnittelee ja valmistaa tuotteensa mahdollisimman ympäristöystävällisiksi käyttämällä kierrätettäviä, alhaisia pitoisuuksia haitallisia aineita sisältäviä materiaaleja sekä tuotteissaan että niiden pakkauksissa.

Suosittellemme, että irrotat D-Link-tuotteesi virtalähteestä tai sammutat ne aina, kun ne eivät ole käytössä. Toimimalla näin autat säästämään energiaa ja vähentämään hiilidioksiidipäästöjä.

Lue lisää ympäristöystävällisistä D-Link-tuotteista ja pakkauksistamme osoitteesta [www.dlinkgreen.com](http://www.dlinkgreen.com).

## DK

## FI

## SVENSKA

## SE



Den här symbolen på produkten eller förpackningen betyder att produkten enligt lokala lagar och föreskrifter inte skall kastas i hushållssoporna utan i stället återvinnas. Ta den vid slutet av dess livslängd till en av din lokala myndighet utsedd uppsamlingsplats, vissa accepterar produkter utan kostnad. Genom att på detta sätt återvinna produkten och förpackningen hjälper du till att bevara miljön och skydda människors hälsa.

## D-Link och miljön

På D-Link förstår vi och är fast beslutna att minska den påverkan våra verksamheter och produkter kan ha på miljön. För att minska denna påverkan utformar och bygger D-Link sina produkter för att de ska vara så miljövänliga som möjligt, genom att använda återvinningsbara material med låg gifthalt i både produkter och förpackningar.

D-Link rekommenderar att du alltid stänger av eller kopplar ur dina D-Link produkter när du inte använder dem. Genom att göra detta hjälper du till att spara energi och minska utsläpp av koldioxid.

För mer information om våra miljöansvariga produkter och förpackningar [www.dlinkgreen.com](http://www.dlinkgreen.com).

## PORTUGUÊS

## PT



Este símbolo no produto ou embalagem significa que, de acordo com as leis e regulamentações locais, este produto não deverá ser eliminado juntamente com o lixo doméstico mas enviado para a reciclagem. Transporte-o para um ponto de recolha designado pelas suas autoridades locais quando este tiver atingido o fim da sua vida útil, alguns destes pontos aceitam produtos gratuitamente. Ao reciclar o produto e respectiva embalagem desta forma, ajuda a preservar o ambiente e protege a saúde humana.

## A D-Link e o ambiente

Na D-Link compreendemos e comprometemo-nos com a redução do impacto que as nossas operações e produtos possam ter no ambiente. Para minimizar este impacto a D-Link concebe e constrói os seus produtos para que estes sejam o mais inofensivos para o ambiente possível, utilizando materiais recicláveis e não tóxicos tanto nos produtos como nas embalagens.

A D-Link recomenda que desligue os seus produtos D-Link quando estes não se encontrarem em utilização. Com esta acção ajudará a poupar energia e reduzir as emissões de CO<sub>2</sub>.

Para saber mais sobre os nossos produtos e embalagens responsáveis a nível ambiental visite [www.dlinkgreen.com](http://www.dlinkgreen.com).

**D-Link<sup>®</sup>**

Ver 1.00\_90x130  
2015/12/04  
290716001001TS4