

# D-Link Quick Installation Guide

This product can be set up using any current web browser, i.e., Internet Explorer 6 or Netscape Navigator 6.2.3.



**DI-774**  
Tri-Mode Dualband  
Wireless Router

## Before You Begin

1. If you purchased this router to share your high-speed Internet connection with other computers, you must have either an Ethernet-based Cable or DSL modem with an established Internet account from an Internet Service Provider (ISP).
2. It's best to use the same computer that is connected to your modem for configuring the DI-774 Tri-Mode Dualband Wireless Router. The DI-774 acts as a DHCP server and will assign all the necessary IP address information on your network. **See Appendix at the end of this Quick Installation Guide or the Manual on the CD-ROM for setting each network adapter to automatically obtain an IP address.**

## Check Your Package Contents



**DI-774 Tri-Mode Dualband Wireless Router**



**CD-ROM (containing Manual and Warranty)**



**Ethernet (Straight-Through) Cable**



**5V 3A DC Power Adapter**

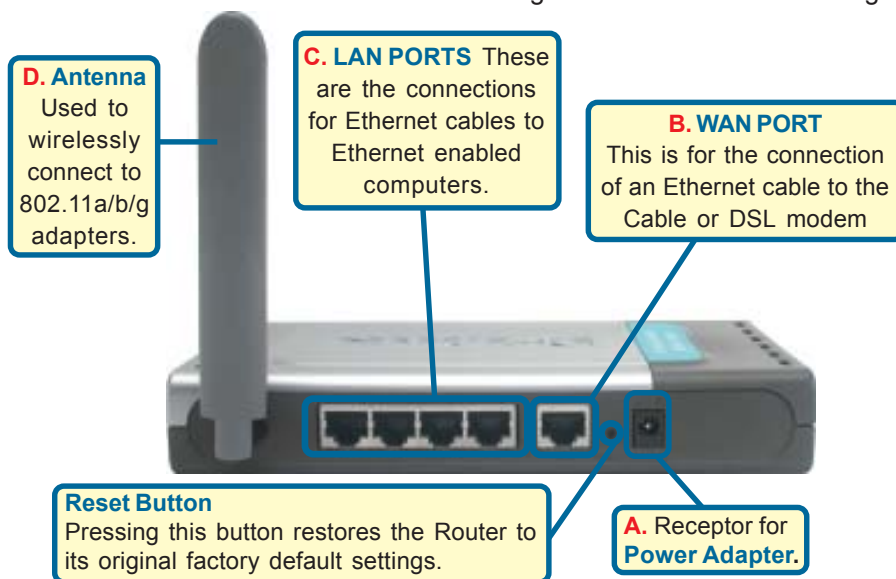


Using a power supply with a different voltage rating will damage and void the warranty of this product.

If any of the above items are missing, please contact your reseller.

# 1 Connecting The DI-774 Wireless Router To Your Network

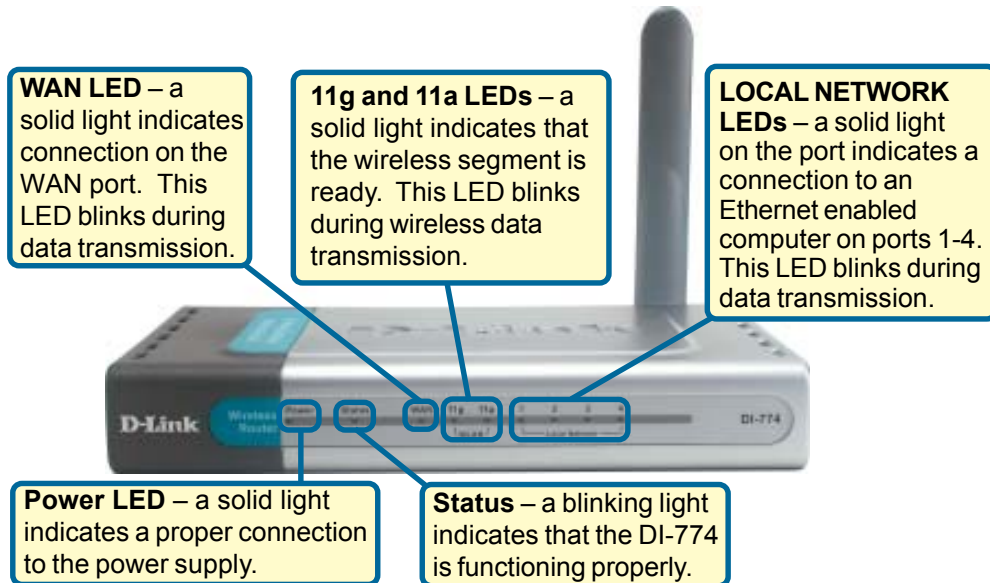
- A.** First, connect the power adapter to the **receptor** at the back panel of the DI-774 and then plug the other end of the power adapter to a wall outlet or power strip. The Power LED will turn **ON** to indicate proper operation.
  
- B.** 1. Power off your Cable or DSL modem; some devices may not have a on/off switch and will require you to unplug the power adapter. Now, the DI-774 should be powered on and the Cable / DSL modem should be turned off.  
Cable / DSL modem (**Power Off**) – DI-774 (**Power On**)  
  
2. Connect an Ethernet cable to the Ethernet jack located on the Cable / DSL modem. After the Ethernet cable is securely connected, power on the Cable / DSL modem by turning on the unit or plugging in the power adapter.  
Cable / DSL modem (**Power On**) – DI-774 (**Power On**)  
  
3. Insert the other end of the Ethernet cable to the WAN PORT on the back panel of the DI-774. The WAN LED light will illuminate to indicate proper connection. If the WAN LED is not illuminated, please go back to step B and repeat its instructions.
  
- C.** Insert an Ethernet cable to **LAN port 1** on the back panel of the DI-774 and an available Ethernet port on the network adapter in the computer you will use to configure the DI-774. The LED light for LAN Port 1 will illuminate to indicate proper connection. (Note: The Ports on the DI-774 are Auto-MDI/MDIX. Meaning you can use a straight-through or crossover Ethernet cable to the WAN and LAN Ports.)
  
- D.** Computers equipped with D-Link 802.11a/b/g wireless adapters will be able to connect out of the box with the DI-774 using their default wireless settings.



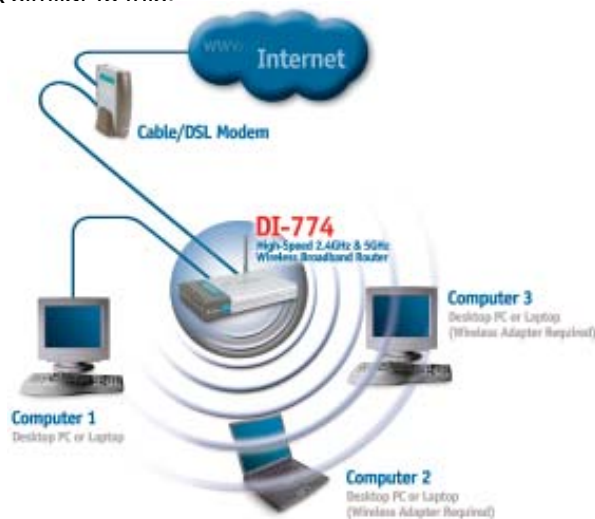
## 2 Restart Your Computer

## 3 Connecting Additional Computers To The DI-774

Using additional Ethernet (CAT5 UTP) cables, connect your Ethernet-equipped computers to the remaining Ethernet LAN ports on the back panel of the DI-774.



When you have completed the steps in this *Quick Installation Guide*, your connected network should look similar to this:



## 4 Using The Setup Wizard

Open your Web browser and type "**http://192.168.0.1**" into the URL address box. Then press the **Enter** or **Return** key.



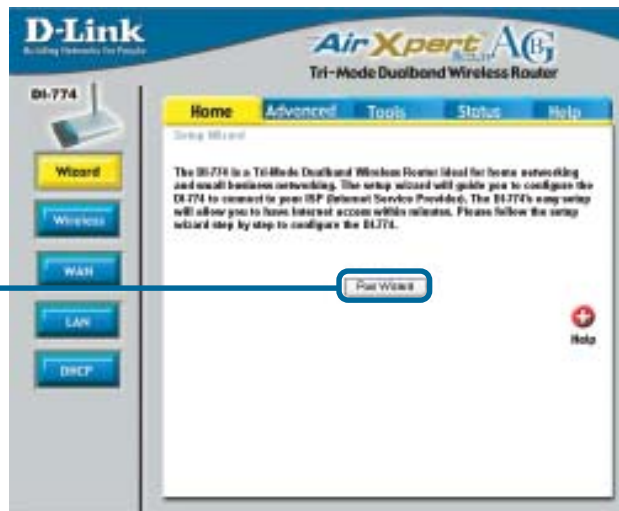
The logon pop-up screen will appear.

Type "**admin**" for the username and leave the password field blank.



Click **OK**

Once you have logged in, the **Home** screen will appear.

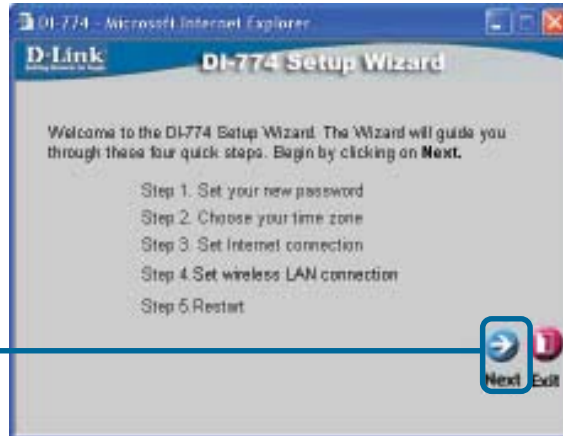


Click **Run Wizard**

## 4 The Setup Wizard (continued)

You will see the following screens

Click **Next**



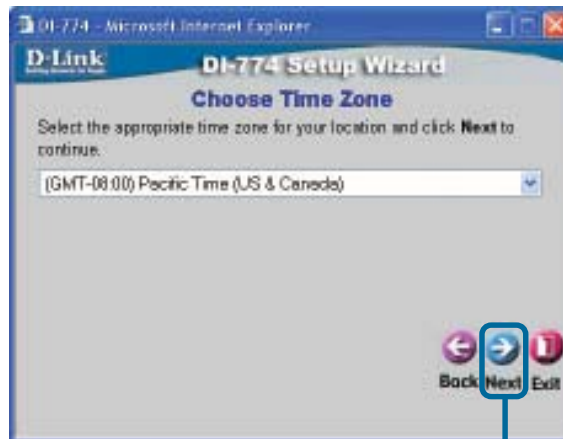
**Set up your new password.**  
You have the option to establish a password.

Click **Next**



**Choose your time zone** from the drop down list.


Click **Next**



## 4 The Setup Wizard (continued)

### Select your Internet Connection.


You will be prompted to select the type of Internet connection for your router.

 If you are unsure of which setting to select, please contact your Internet Service Provider.

Click **Next**

If you selected **Dynamic IP Address**, this screen will appear: (Used mainly for Cable Internet service.)

Click the **“Clone MAC Address”** button to automatically copy the MAC address of the network adapter in your computer. You can also manually type in the MAC address.

 This setup should be done on the computer that is registered on the ISP's network.

Click **Next**

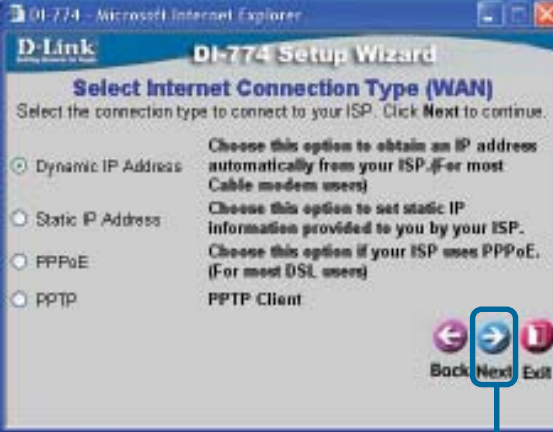
Please continue to the last part of step 4, **802.11g Wireless Setup**.

If your ISP requires a **Static IP Address**, and this option is selected, then this screen will appear:

Enter the IP address information originally provided to you by your ISP. You will need to complete all the required fields.

Click **Next**

Please continue to the last part of step 4, **802.11g Wireless Setup**.



D-Link DI-774 Setup Wizard  
**Select Internet Connection Type (WAN)**  
Select the connection type to connect to your ISP. Click **Next** to continue.


Dynamic IP Address Choose this option to obtain an IP address automatically from your ISP. (For most Cable modem users)

Static IP Address Choose this option to set static IP information provided to you by your ISP.

PPPoE Choose this option if your ISP uses PPPoE. (For most DSL users)

PPTP PPTP Client

Back Next Exit



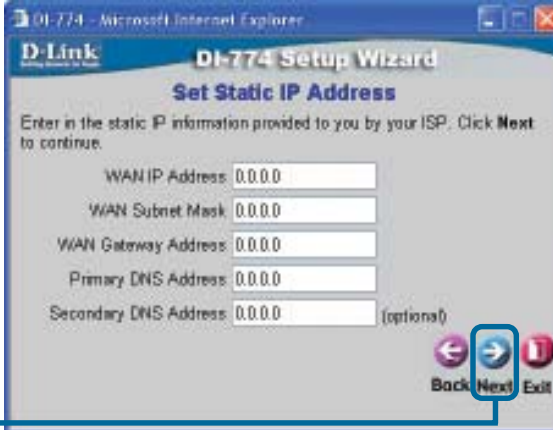
D-Link DI-774 Setup Wizard  
**Set Dynamic IP Address**  
If your ISP require you to enter a specific host name or specific MAC address, please enter it in. The **Clone MAC Address** button is used to copy the MAC address of your Ethernet adapter to the DI-774. Click **Next** to continue.

Host Name: DI-774 (optional)

MAC: 00 - 11 - 22 - 33 - 44 - 56 (optional)

Clone MAC Address

Back Next Exit



D-Link DI-774 Setup Wizard  
**Set Static IP Address**  
Enter in the static IP information provided to you by your ISP. Click **Next** to continue.

WAN IP Address: 0.0.0.0

WAN Subnet Mask: 0.0.0.0

WAN Gateway Address: 0.0.0.0

Primary DNS Address: 0.0.0.0

Secondary DNS Address: 0.0.0.0 (optional)

Back Next Exit

## 4 The Setup Wizard (continued)

If your ISP uses **PPPoE** (Point-to-Point Protocol over Ethernet), and this option is selected, then this screen will appear: (Used mainly for DSL Internet service.)

Please be sure to remove any existing PPPoE client software installed on your computers.

Enter in the username and password provided to you by your ISP.

Click **Next**

D-Link DI-774 Setup Wizard  
Set PPPoE

The service name is optional but may be required by your ISP. Click **Next** to continue.

User Name: \_\_\_\_\_  
Password: \_\_\_\_\_  
Retype Password: \_\_\_\_\_  
Service Name (optional): \_\_\_\_\_

Back Next Exit

## 802.11g Wireless Setup

The default wireless settings for your 802.11g wireless network are:

SSID = **default**

Channel = **1**

You can change these settings to match an existing wireless network.

Click **Next**

D-Link DI-774 Setup Wizard  
Set 802.11g Wireless LAN Connection

Enter in the SSID name and Channel number to be used for the Wireless Access Point. Click **Next** to continue.

SSID: default  
Channel: 1

Back Next Exit

If you wish to use encryption for your 802.11g network, the DI-774 is capable of three levels of wireless encryption: 64-bit, 128-bit, and 152-bit. **By default the encryption is disabled.** You can change the encryption settings for more secure wireless communication.

Click **Next**

D-Link DI-774 Setup Wizard  
Set 802.11g Wireless LAN Connection

If you wish to use encryption, enable it here and enter the encryption Key Values. Click **Next** to continue.

WEP:  Enabled  Disabled  
Wep encryption: 64-bit  
Key: 00000000  
Input 10 HEX characters (HEX is 0-9, A-F, or a-f)

Back Next Exit

## 4 The Setup Wizard (continued)

### 802.11a Wireless Setup

The default wireless settings for your 802.11a wireless network are:

SSID = **default**

Channel = **52**

You can change these settings to match an existing wireless network.



Click **Next**

If you wish to use encryption for your 802.11a network, the DI-774 is capable of three levels of wireless encryption: 64-bit, 128-bit, and 152-bit. **By default the encryption is disabled.** You can change the encryption settings for more secure wireless communication.



Click **Next**

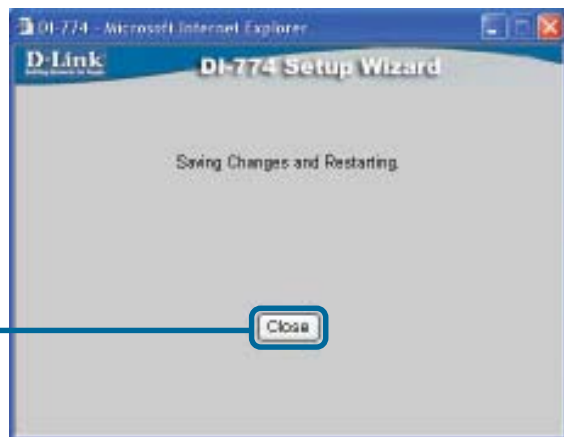


## 5 Your Setup is Complete!

Click **Restart**



Click **Close**



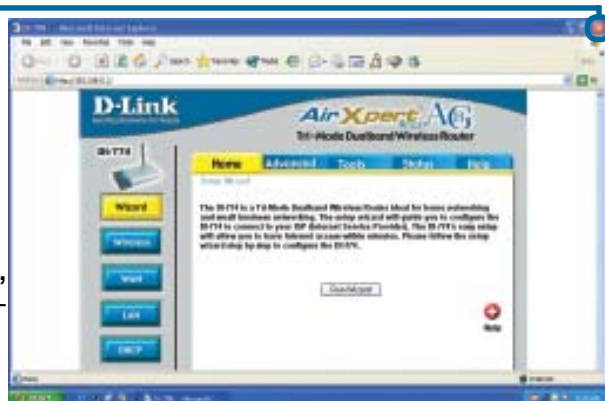
## Test Internet Connection.

You will be returned to the **Home** tab.

Click to **Exit**

Then **relaunch** your Web browser (i.e., *Internet Explorer* or *Netscape Navigator*), to link to your favorite Web site to test your Internet connection.

For additional settings or information, refer to the **Advanced**, **Tools**, or **Status** tabs on the web-management interface; or to the Manual located on the CD.



## APPENDIX (continued)

To connect to the network, make sure the network adapter in your computer is configured properly. Here's how to configure the network adapter to obtain an IP address automatically for the DI-774 Broadband Router.



For **Microsoft Windows XP**:  
Go to **Start > right click on My Network Places > select Properties > Double-click on the Network Connection** associated with the Ethernet adapter (i.e., D-Link DFE-530TX+).

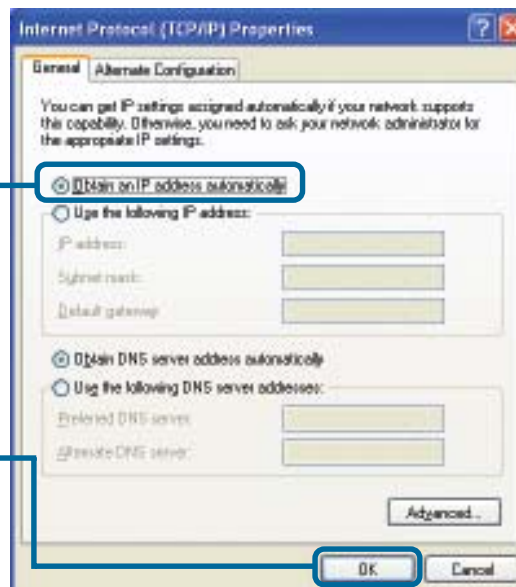
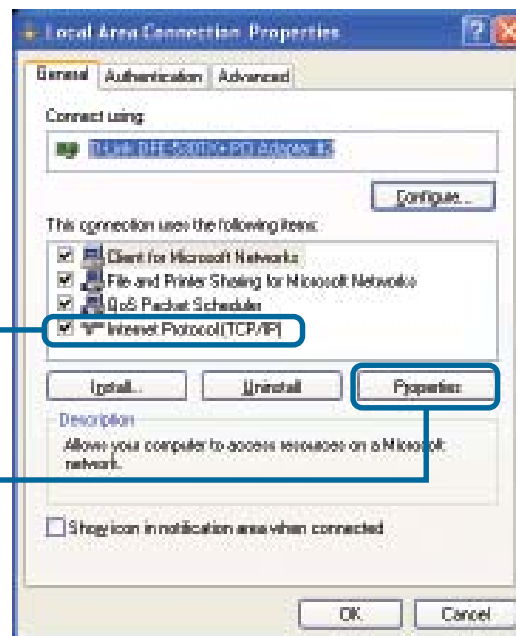
Click **Internet Protocol (TCP/IP)**

Click **Properties**

Select **Obtain an IP address automatically**

Click **OK**

**Restart** your computer if necessary



For **Apple Macintosh OS X:**

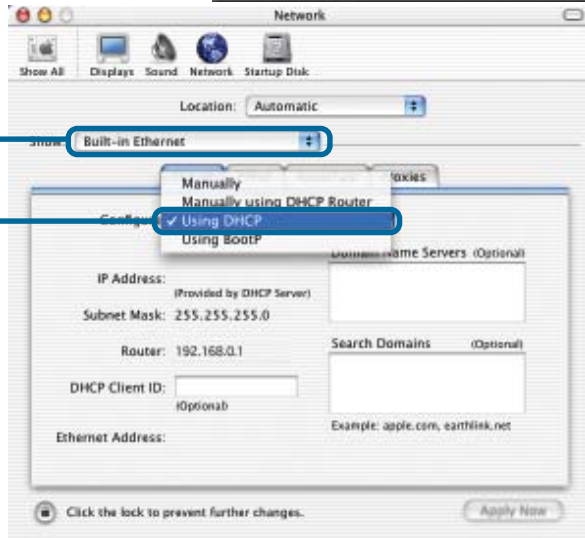
Go to the **Apple Menu** Click on **Network** and Select **System Preferences**

Click on **Network**



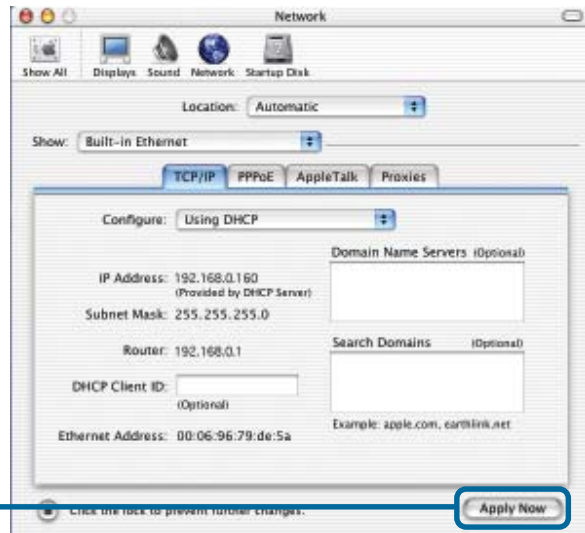
Select **Built-in Ethernet** in the show pull down menu

Select **Using DHCP** in the Configure pull down menu



Click on **Apply Now**

The IP address information, the Subnet Mask, the Router's IP address and the Ethernet adapter address will appear



## Technical Support

You can find software updates and user documentation on the D-Link website.

D-Link provides free technical support for customers within the United States and within Canada for the duration of the warranty period on this product.

U.S. and Canadian customers can contact D-Link technical support through our website, or by phone.

### Tech Support for customers within the United States:

***D-Link Technical Support over the Telephone:***

(877) 453-5465

24 hours a day, seven days a week.

***D-Link Technical Support over the Internet:***

<http://support.dlink.com>

[email:support@dlink.com](mailto:support@dlink.com)

### Tech Support for customers within Canada:

***D-Link Technical Support over the Telephone:***

(800) 361-5265

Monday to Friday 8:30am to 9:00pm EST

***D-Link Technical Support over the Internet:***

<http://support.dlink.ca>

[email:support@dlink.ca](mailto:support@dlink.ca)

