

DI-724GU
Release 1



Wireless Gigabit QoS 108G Router

Quick Install Guide

Business Class Networking

System Requirements

- Ethernet-based Cable or DSL Modem
- Computers with Windows®, Macintosh®, or Linux-based operating systems with an installed Ethernet adapter
- Internet Explorer 6.x and above, or Netscape® Navigator 7.0 and above

Package Contents



D-Link DI-724GU
Wireless 108G Gigabit QoS Router



CD-ROM with
Manual



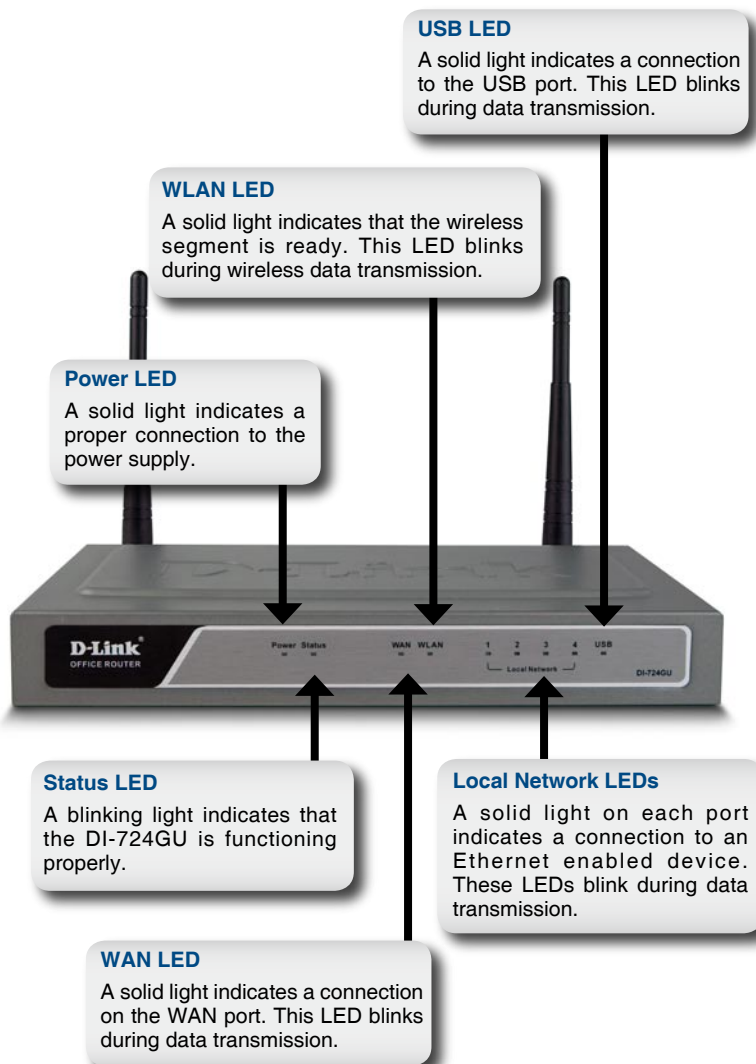
CAT5 Ethernet Cable

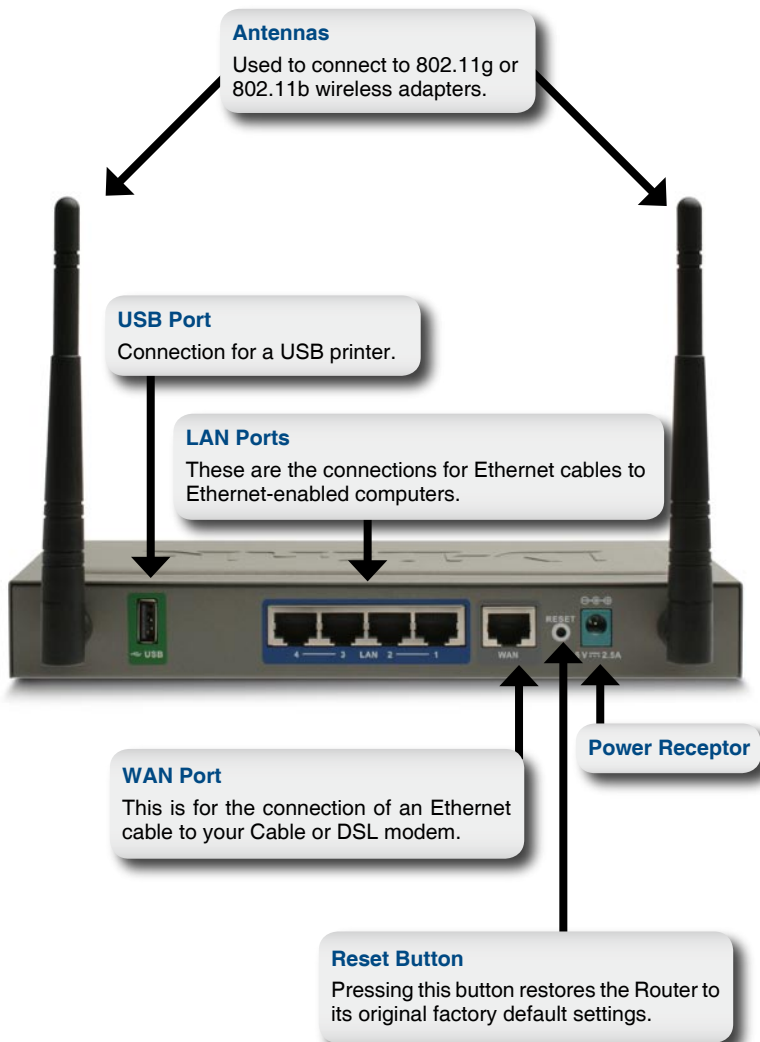


Power Adapter

If any of the above items are missing, please contact your reseller.

Hardware Overview



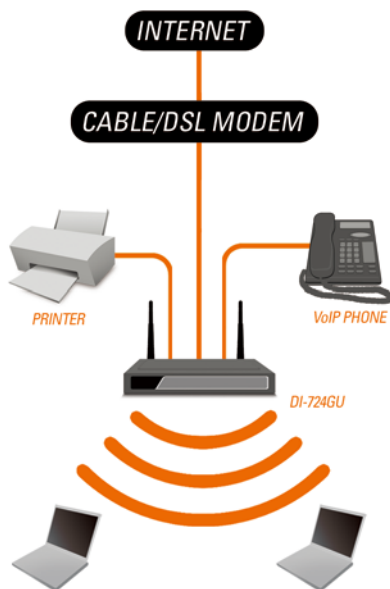


Hardware Installation

- A.** First, connect the power adapter to the receptor at the back panel of the DI-724GU and then plug the other end of the power adapter to a wall outlet or power strip. The Power LED will turn ON to indicate proper operation.
- B.** 1. Power off your Cable or DSL modem; some devices may not have a on/off switch and will require you to unplug the power adapter. Now, the DI-724GU should be powered on and the Cable/DSL modem should be turned off.
2. Cable/DSL modem (**Power Off**) – DI-724GU (**Power On**) Connect an Ethernet cable to the Ethernet jack located on the Cable/DSL modem. After the Ethernet cable is securely connected, power on the Cable/DSL modem by turning on the unit or plugging in the power adapter.
3. Cable/DSL modem (**Power On**) – DI-724GU (**Power On**) Insert the other end of the Ethernet cable to the WAN PORT on the back panel of the DI-724GU. The WAN LED light will illuminate to indicate proper connection. If the WAN LED is not illuminated, please go back to step B1 and repeat the instructions.
- C.** Insert an Ethernet cable to LAN port 1 on the back panel of the DI-724GU and an available Ethernet port on the network adapter in the computer you will use to configure the DI-724GU. The LED light for LAN Port 1 will illuminate to indicate proper connection.
- Note:** *The LAN Ports on the DI-724GU are Auto-MDI/MDIX. Meaning you can use a straight-through or crossover Ethernet cable to the LAN Ports.*
- D.** Computers equipped with 802.11g wireless adapters will be able to connect to the DI-724GU. The DWL-G650 *AirPlus Xtreme G* Wireless Cardbus Adapter and the DWL-G520 *AirPlus Xtreme G* Wireless PCI Adapter will be able to connect out of the box with the router using their default wireless settings.

Getting Started

YOUR NETWORK SETUP

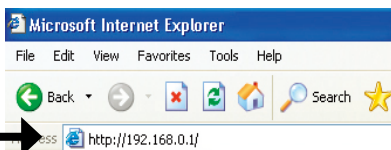


Please remember that **D-Link Wireless 108G** devices are pre-configured to connect together, right out of the box, with their default settings.

Configuration

This section will show you how to configure your new D-Link Wireless 108G Gigabit QoS Router using the D-Link Setup Wizard.

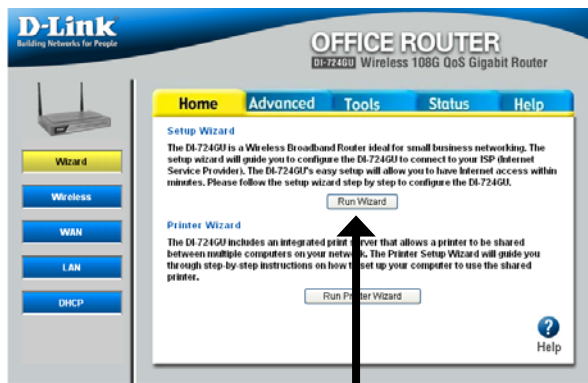
Open your Web browser and type “**http://192.168.0.1**” into the URL address box. Then press the **Enter** or **Return** key.



Select “**Admin**” from the User Name drop down menu and leave the password field blank.



Click **Log In**



Click **Run Wizard**



Click **Next**

You have the option to establish a password for the User Name "Admin".



Click **Next**

Choose your time zone from the drop down list.



Click **Next**

Dynamic IP Address

You will be prompted to select the type of Internet connection for your router. If you are unsure of which setting to select, please contact your Internet Service Provider.

Static IP Address - page 10

PPPoE - page 11

PPTP - page 12

L2TP - page 13

Big Pond - page 14



Click **Next**

If you selected Dynamic IP Address, this screen will appear: (Used mainly for Cable Internet service).

Click the **"Clone MAC Address"** button to automatically copy the MAC address of the network adapter in your computer. You can also manually type in the MAC address.



Click **Next**

Continue to page 15

Static IP Address

If your ISP requires a Static IP Address, please select the corresponding radio button.



Click Next

Enter the IP address that was originally provided to you by your ISP. You will need to complete all of the required fields.



Click Next

Continue to page 15

PPPoE

If your ISP uses PPPoE (Point-to-Point Protocol over Ethernet), select the corresponding radio button.



Click **Next**

If you have a Dynamic IP connection, enter the User Name and Password provided to you by your ISP.



Click **Next**

Note: Please be sure to remove any existing PPPoE client software installed on your computers.

Continue to page 15

PPTP

If your ISP uses PPTP (Point to Point Tunneling Protocol), select the corresponding radio button.

D-Link
Building Networks for People

OFFICE ROUTER
DL-724GU Wireless 108G 6in5 Gigabit Router

Select Internet Connection Type (WAN):
Select the connection type to connect to your ISP. Click Next to continue.

☐ Dynamic IP Address
Choose this option to obtain an IP address automatically from your ISP. (For most Cable routers connect)

☐ Static IP Address
Choose this option to set static IP information provided to you by your ISP.

☒ PPTP
Choose this option if your ISP uses PPTP. (For most DSL users)

☐ L2TP
L2TP Client

☐ BigPond
BigPond Client

Back Next End

Click **Next**

If you have a Dynamic IP connection, enter the Server IP, PPTP Account, and Password provided to you by your ISP.

D-Link
Building Networks for People

OFFICE ROUTER
DL-724GU Wireless 108G 6in5 Gigabit Router

Set PPTP Client
Please set your PPTP Client data then press Next to continue.

☐ Dynamic IP ☒ Static IP

My IP: 0.0.0.0

Subnet Mask: 255.255.255.0

Gateway IP Address: 0.0.0.0

Server IP: 0.0.0.0

PPTP Account: #####

Password: #####

Bridge Password: #####

Back Next End

Click **Next**

If you have a Static IP connection, enter the IP Address, Subnet Mask, Gateway IP Address, Server IP, PPTP Account, and Password provided to you by your ISP.

D-Link
Building Networks for People

OFFICE ROUTER
DL-724GU Wireless 108G 6in5 Gigabit Router

Set PPTP Client
Please set your PPTP Client data then press Next to continue.

☐ Dynamic IP ☒ Static IP

My IP: 0.0.0.0

Subnet Mask: 255.255.255.0

Gateway IP Address: 0.0.0.0

Server IP: 0.0.0.0

PPTP Account: #####

Password: #####

Bridge Password: #####

Back Next End

Click **Next**

Continue to page 15

L2TP

If your ISP uses L2TP (Layer Two Tunneling Protocol), select the corresponding radio button.



Click **Next**

If you have a Dynamic IP connection, enter the L2TP Server IP Address, User Name, and Password provided to you by your ISP.



Click **Next**

If you have a Static IP connection, enter the L2TP IP Address, Subnet Mask, Gateway IP Address, L2TP Server IP, User Name, and Password provided to you by your ISP.



Click **Next**

Continue to page 15

Big Pond

Select this option if you connect to the internet through Telstra BigPond Cable Broadband in Australia.

The screenshot shows the 'Select Internet Connection Type (WAN)' screen of a D-Link Office Router. The title bar includes the D-Link logo and 'OFFICE ROUTER DI-724GU Wireless 1080p GoS Gigabit Router'. The instruction says 'Select the connection type to connect to your ISP. Click Next to continue.' There are five radio button options: 'Dynamic IP Address', 'Static IP Address', 'PPPoE', 'PPTP Client', and 'BigPond'. The 'BigPond' option is selected. To the right of each option is a brief description. At the bottom right are 'Back', 'Next', and 'End' buttons. An arrow points from the 'Click Next' button to the 'Next' button on the screen.

Click **Next**

Enter the User Name, and Password provided to you by your ISP.

The screenshot shows the 'Set BigPond' screen of the D-Link Office Router. The title bar is the same as the previous screen. The instruction says 'Please set your BigPond Cable data from press Next to continue.' There are four input fields: 'User Name', 'Password', 'Bridge Password', and 'Auth Server'. Each field has a small 'x' icon to clear the text. At the bottom right are 'Back', 'Next', and 'End' buttons. An arrow points from the 'Click Next' button to the 'Next' button on the screen.

Click **Next**

Continue to page 15

Wireless Setup

The default wireless settings for your 802.11g wireless network are:

SSID = **dlink**

Channel = **6**

You can change these settings to match an existing wireless network.



Click **Next**

If you wish to use encryption for your 802.11g network, the DI-724GU is capable of two types of wireless encryption WEP and WPA-PSK. By default the encryption is disabled. You can change the encryption settings for more secure wireless communication.



Click **Next**

WEP

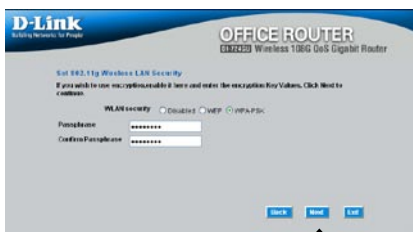
There are two levels of WEP encryption: 64-bit and 128-bit (using only Hexadecimal). You can change the encryption settings for more secure wireless communication.



Click **Next**

WPA-PSK

Enter a PassPhrase that is between 8 to 63 characters and is alphanumeric.



Click **Next**

Your Setup is Complete!



Click **Restart**

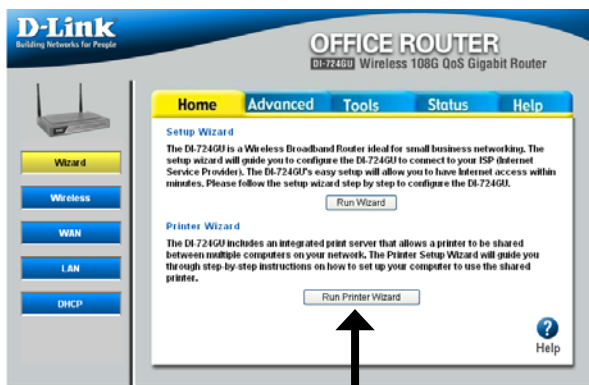
Test Internet Connection

You will be returned to the **Home** tab. Close this web browser window and open a new one (i.e., *Internet Explorer* or *Netscape® Navigator*). Link to your favorite Web site to test your Internet connection.

For additional settings or information, refer to the **Advanced**, **Tools**, or **Status** tabs on the web-management interface; or to the Manual located on the CD.

Printer Wizard

Make sure your printer is connected to the USB port on the router.



Click **Run Printer Wizard**



Click **Next**

The wizard will identify the make and model of your printer, as well as its status.



Click **Next**

Click **Next** to run the Printer Setup application.

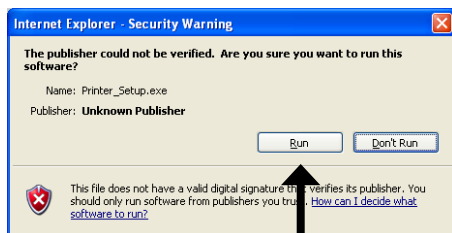


Click **Next**

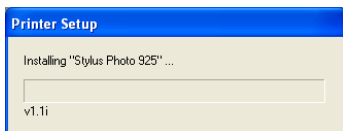
This application can only run when accessed from the router. Do not click **Save**.



Click **Run**



Click **Run**



You may need to supply the drivers for your printer if they are not built into Windows®.



Click **OK**

Click **Browse** to locate the driver and then click **OK**.



Once the wizard has completed installing your printer, you will be prompted to print a test page to verify its functionality.



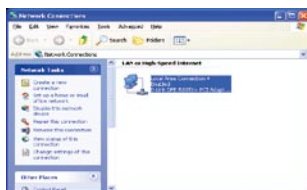
Click **OK**



Click **Finish**

Appendix

To connect to the network, make sure the network adapter in your computer is configured properly. Here's how to configure the network adapter to obtain an IP address automatically for the DI-724GU Wireless Broadband Router.

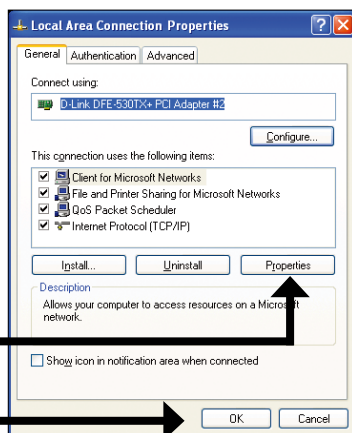


For Microsoft Windows® XP:

Right click on **My Network Places** and select **Properties**. Right click on the **Network Connection** associated with the Ethernet adapter and select **Properties** (i.e., D-Link DFE-530TX+).

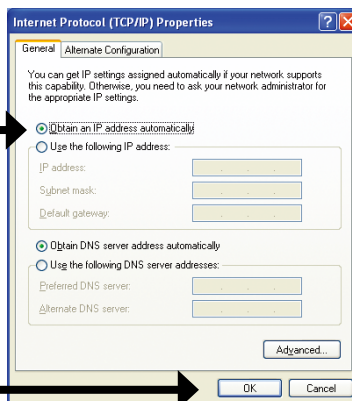
Click **Internet Protocol (TCP/IP)** and then click **Properties**.

Click **OK**



Select **Obtain an IP Address automatically**.

Click **OK**



For Apple Macintosh® OS X:

Go to the **Apple Menu** and click on **System Preferences**, and select **Network**.

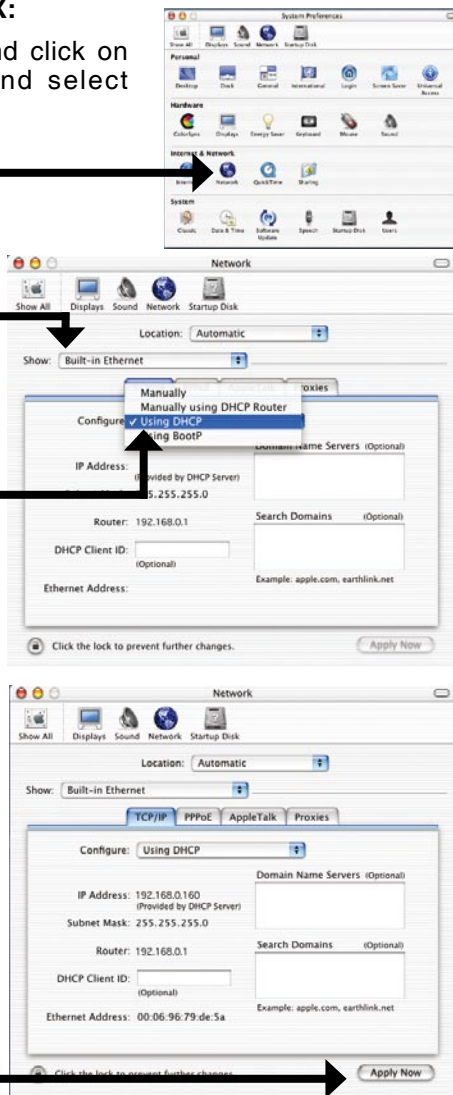
Click **Network**

Select **Built-in Ethernet** in the **Show** pull down menu.

Select **Using DHCP** in the **Configure** pull down menu.

The IP address information, the Subnet Mask, the Router's IP address, and the Ethernet adapter address will appear.

Click **Apply Now** and restart your computer (if necessary).



Notes

Notes

Technical Support

You can find software updates and user documentation on the D-Link websites.

If you require product support, we encourage you to browse our FAQ section on the Web Site before contacting the Support line. We have many FAQ's which we hope will provide you a speedy resolution for your problem.

For Customers within The United Kingdom & Ireland:

D-Link UK & Ireland Technical Support over the Internet:

<http://www.dlink.co.uk>

<ftp://ftp.dlink.co.uk>

D-Link UK & Ireland Technical Support over the Telephone:

08456 12 0003 (United Kingdom)

+1890 886 899 (Ireland)

Lines Open

8.00am-10.00pm Mon-Fri

10.00am-7.00pm Sat & Sun

For Customers within Canada:

D-Link Canada Technical Support over the Telephone:

1-800-361-5265 (Canada)

Mon. to Fri. 7:30AM to 9:00PM EST

D-Link Canada Technical Support over the Internet:

<http://support.dlink.ca>

email: support@dlink.ca

D-Link®

Building Networks for People

2006/05/03

Ver.1.00(E)