



User Manual

PowerLine AV500 Wireless N Mini Extender Starter Kit

DHP-W311AV (DHP-308AV & DHP-W310AV)

Preface

D-Link reserves the right to revise this publication and to make changes in the content hereof without obligation to notify any person or organization of such revisions or changes.

Manual Revisions

Revision	Date	Description
1.0	20 November, 2012	• Initial release for A1 version
2.0	27 August, 2014	• add ErP statement

Trademarks

D-Link and the D-Link logo are trademarks or registered trademarks of D-Link Corporation or its subsidiaries in the United States or other countries. All other company or product names mentioned herein are trademarks or registered trademarks of their respective companies.

Copyright © 2014 by D-Link Corporation.

All rights reserved. This publication may not be reproduced, in whole or in part, without prior expressed written permission from D-Link Systems, Inc.

This purpose of this product is to create a constant network connection for your devices. As such, it does not have a standby mode or use a power management mode. If you wish to power down this product, please simply unplug it from the power outlet.

Power Usage

This device is an Energy Related Product (ErP) with High Network Availability (HiNA), and automatically switches to a power-saving Network Standby mode within 1 minute of no packets being transmitted. If it is not needed during certain periods of time, it can be unplugged to save energy.

DHP-W310AV:

Networked standby mode: 4.11W

DHP-308AV:

Networked standby mode: 1.98W

Table of Contents

Preface	2	MAC Address Filter.....	22
Manual Revisions.....	2	Advanced Wireless.....	23
Trademarks.....	2	User Limit.....	24
Power Usage.....	2	Tools.....	25
Product Overview	5	Admin.....	25
Package Contents.....	5	System.....	26
System Requirements.....	6	Firmware.....	27
Introduction.....	6	Time.....	28
Hardware Overview.....	8	System Check.....	29
DHP-W310AV.....	8	Status.....	30
DHP-308AV.....	10	Device Info.....	30
Connections.....	10	Logs.....	31
LEDs.....	11	Statistics.....	32
Hardware Installation	12	Wireless.....	33
Wireless Installation Considerations.....	13	IPv6.....	34
Powerline Installation Considerations.....	14	Support.....	35
Safety.....	15	Wireless Security	36
DHP-W310AV Configuration	16	What is WEP?.....	36
Setup.....	16	What is WPA?.....	37
Hybrid Link Setup.....	17	Configuring WEP.....	38
Wireless Settings.....	18	Configuring WPA/WPA2 Personal.....	39
LAN Settings.....	19	Connecting to a Wireless Network	40
LAN Settings - Static IP.....	20	Using Windows® 8.....	40
PLC Settings.....	21	Using Windows® 7.....	42
Advanced.....	22	Using Windows Vista®.....	45

Table of Contents

Configuring Wireless Security.....47

Using Windows® XP49

Configuring WPA-PSK.....50

Troubleshooting52

Wireless Basics54

What is Wireless?55

How does wireless work?55

Wireless Local Area Network (WLAN)55

Networking Basics58

Check your IP address.....58

Statically Assign an IP address.....59

Technical Specifications (DHP-W310AV)60

Technical Specifications (DHP-308AV)62

Product Overview

Package Contents



D-Link DHP-W310AV PowerLine AV500 Wireless N Mini Extender



D-Link DHP-308AV PowerLine AV500 Mini Adapter



CAT5 Ethernet Cable (x2)



CD-ROM with User Manual



Wi-Fi Configuration Card

System Requirements

Network Requirements

- IEEE 802.11n or 802.11g wireless clients
- 10/100 Ethernet clients

Browser Requirements

- Internet Explorer 7.0 or higher
- Firefox 3.5 or higher
- Safari 4.0 or higher
- Chrome 8.0 or higher

CD Requirements

- Windows® 7 / Vista® /XP /8 /Mac OS 8 above
- CD-ROM drive
- PC with 1.5 Ghz processor
- 1 GB memory

Introduction

The DHP-W311AV PowerLine AV500 Wireless N Mini Extender Starter Kit includes a DHP-308AV and a DHP-W310AV that together allow you to connect both wired and wireless computers, high-definition TVs, networking devices, and gaming consoles using the most pervasive medium in your home - the electrical wiring. Share Internet connections and experience smooth file transfers, streaming multimedia, online gaming and more. The Powerline AV500 Wireless N Mini Extender features easy plug-and-play installation and can be connected to any Ethernet-enabled device.

The PowerLine PowerLine AV500 Wireless N Mini Extender Starter Kit incorporates the latest AV technology to improve on older AV speeds. This fast transmission speed provides ample bandwidth suitable for streaming high-quality video HDTV signals while simultaneously providing high-speed Internet access throughout the home. With Quality of Service (QoS) support, the performance of applications which require real-time communication, such as VoIP phonecalls and multiplayer online games, will not be compromised even while streaming Internet TV and music.

Data Transmission Over electrical Wiring

The D-Link DHP-W310AV PowerLine AV500 Wireless N Mini Extender, compliant with the HomePlug AV standard, uses your home's existing electrical wiring¹ to create a network or extend your existing network. It turns every power outlet into a potential network connection to access digital media devices, game consoles, print servers, computers, and network storage devices throughout your home. Additionally, Wireless N provides high speed transfers without the need for unsightly network cables.

Faster Wireless Speeds & Wider Operational Range

The Wireless N technology incorporated into the DHP-W310AV offers increased speed and range beyond standard 802.11g technology. Initial wireless setup can be accomplished quickly, thanks to a convenient setup wizard. WPA and WPA2 encryption keep your network traffic safe and secure.

Ideal For Bandwidth-Intensive Applications

The DHP-W310AV is capable of delivering Powerline AV data transfer rates even higher than the old AV standard. This rapid transmission speed makes it ideal for bandwidth-intensive applications, guaranteeing smooth HD video streaming, clear VoIP calls, and lag-free online gaming experiences. In addition, it prioritizes Internet traffic, ensuring that multimedia applications do not experience glitches while web surfing and downloads are in progress. This device provides ample network bandwidth, enabling digital home consumers to tap into existing electrical wiring for high-quality multimedia streaming.

Convenient Setup and Secure Operation

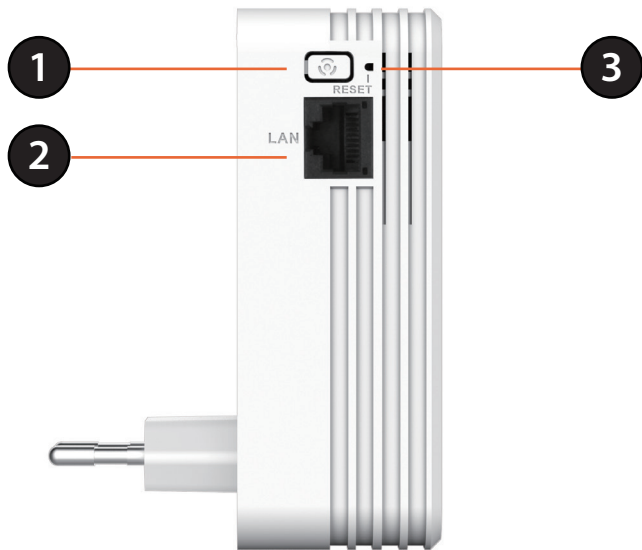
The DHP-W311AV devices plug directly into a power outlet, and do not require any additional power cables. Extend your home network by connecting multiple devices in the farthest corners of your home via Ethernet cable or Wireless N. For convenient setup, wired or wireless encryption keys can be quickly configured with the push of a button on top of the device. The adapter implements 128-bit AES data encryption to protect the network from unauthorized wiretapping. With hassle-free plug and play installation, the DHP-W311AV is an ideal solution to create a wall-to-wall home network.

¹Power outlets and electrical wiring must all be part of the same electrical system. Certain electrical conditions in your home, such as wiring condition and configuration, may affect the performance of this product. Additional D-Link Powerline AV adapters are required to add new devices to the network. A minimum of two D-Link Powerline AV Network Adapters are required to create a network. Connecting this product to a power strip with a surge protector may adversely affect the performance of this product. For best results, plug the adapter directly into a wall outlet.

Hardware Overview

DHP-W310AV

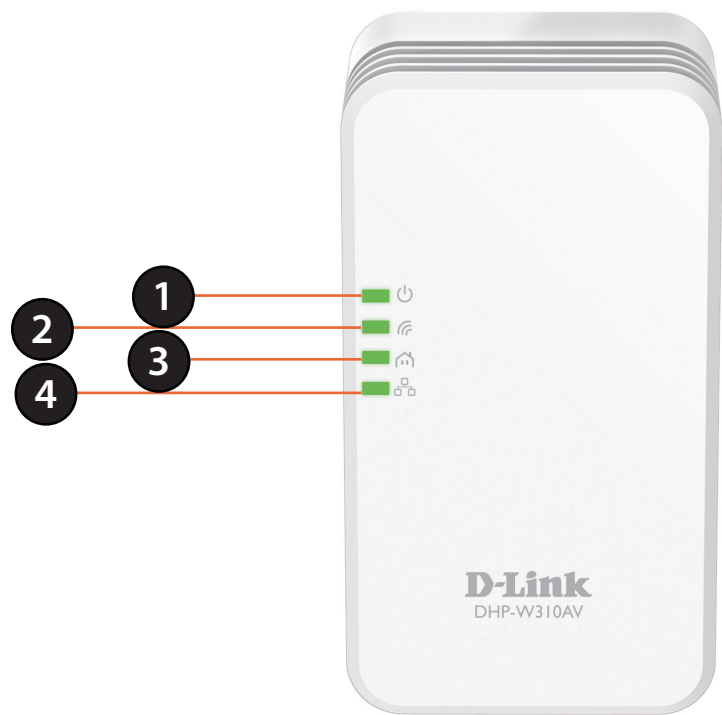
Connections



1	Common Connect Button	Push this button to create a secure Powerline connection with another adapter. More on this connection is available at “Hardware Installation” on page 12 . It can also be used to connect using Wi-Fi Protected Setup (WPS). To connect using WPS, press this button, then press the WPS button on your wireless client.
2	RJ-45 10/100BASE-TX Ethernet Port	Connects to Digital Media Devices, PCs, Game Consoles, Network Storage Devices
3	Reset Button	Press and hold the button for 5 seconds to reset to factory default.

Hardware Overview

LEDs

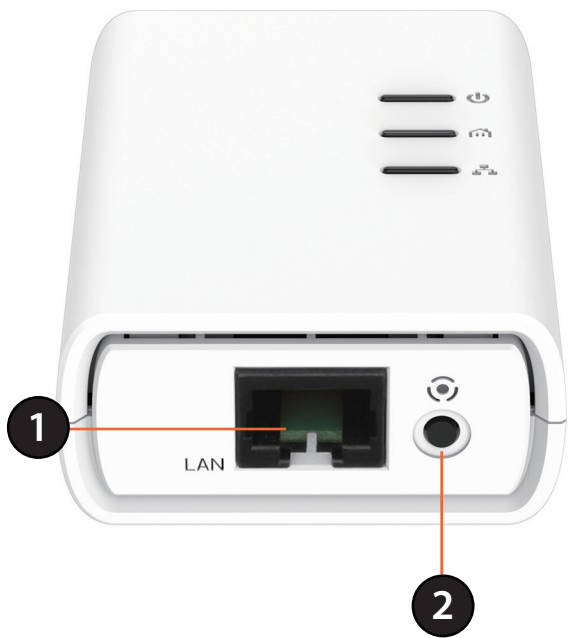


1	Power LED	A solid light indicates a proper connection to the power supply. A blinking light indicates it is in sleep mode or seeking a Powerline connection.
2	Wireless LED	A solid light indicates that the wireless segment is ready.
3	Powerline LED	A solid light indicates that a Powerline connection is established.
4	Ethernet LED	A solid light indicates a connection to an Ethernet-enabled device.

Hardware Overview

DHP-308AV

Connections

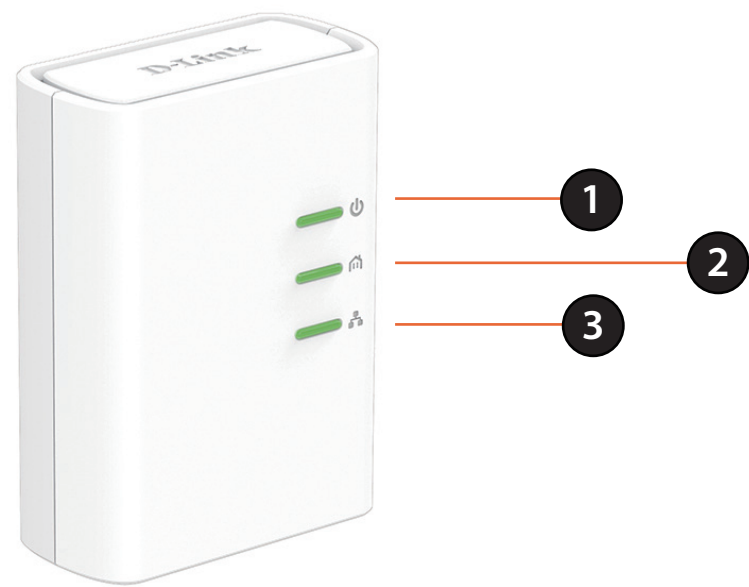


1	RJ-45 10/100BASE-TX Ethernet Port	Connects to Digital Media Devices, PCs, Game Consoles, Network Storage Devices
2	Simple Connect Button	Use this button to set up a Powerline network. Press and hold the button for 10 seconds to reset to factory default

Hardware Overview

DHP-308AV

LEDs



1	Power LED	A solid light indicates a proper connection to the power supply. A blinking light indicates it is in sleep mode (after 5 minutes of inactivity) or seeking a Powerline connection.
2	Powerline LED	A solid light indicates that a Powerline connection is established.
3	Ethernet LED	A solid light indicates a connection to an Ethernet-enabled device.

Hardware Installation

Power

Plug the DHP-308AV into a wall outlet near your router. Plug the DHP-W310AV into a wall outlet where you want to extend your network. The Power LED on both will turn on to indicate they are receiving power. This may take up to 60 seconds.

Connect the Devices

Press the Common Connect Button on the DHP-308AV for 3 seconds. Then, press the Common Connect Button on the DHP-W310AV for 3 seconds. This must be done within two minutes after pressing the Common Connect Button on the DHP-308AV. The Powerline devices will reboot.

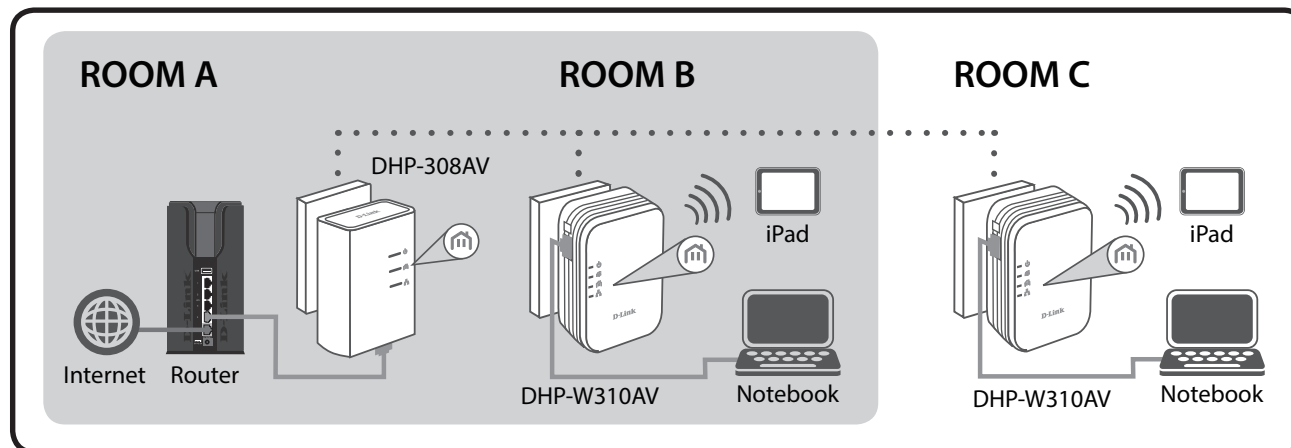
Note: Network connectivity is confirmed when the Powerline LEDs on both Powerline devices are steadily lit. This will indicate that your network is now secure.

Plug in the Ethernet Cable

You should already own a router connected to a modem. Connect one of the supplied Ethernet cables between your router and the DHP-308AV. Connect the other Ethernet cable between your DHP-W310AV and your computer. Read the guidelines on the following pages, and continue to “DHP-W310AV Configuration” on page 16.

Adding More Devices (optional)

If you have more Powerline devices now or in the future, you may add them to your network in the same way as above. Be sure to press the Common Connect Button on the new device, then the Common Connect Button on the existing network.



Wireless Installation Considerations

The DHP-W310AV lets you access your network using a wireless connection from anywhere within the operating range of your wireless network. Keep in mind that the number, thickness and location of walls, ceilings, or other objects that the wireless signals must pass through may limit the range. Typical ranges vary depending on the types of materials and background RF (radio frequency) noise in your home or business. The key to maximizing wireless range is to follow these basic guidelines:

1. Keep the number of walls and ceilings between the DHP-W310AV and other network devices to a minimum. Each wall or ceiling can reduce your adapter's range by 3-90 feet (1-30 meters.) Position your devices so that the number of walls or ceilings is minimized.
2. Be aware of the direct line between network devices. A wall that is 1.5 feet thick (.5 meters) at a 45-degree angle appears to be almost 3 feet (1 meter) thick. At a 2-degree angle it looks over 42 feet (14 meters) thick! Position devices so that the signal will travel straight through a wall or ceiling (instead of at an angle) for better reception.
3. Building materials make a difference. A solid metal door or aluminum studs may have a negative effect on range. Try to position the wireless DHP-W310AV and computers so that the signal passes through drywall or open doorways. Materials and objects such as glass, steel, metal, walls with insulation, water (fish tanks), mirrors, file cabinets, brick, and concrete will degrade your wireless signal.
4. Keep your product away (at least 3-6 feet or 1-2 meters) from electrical devices or appliances that generate RF noise.
5. If you are using 2.4GHz cordless phones or wireless products such as ceiling fans, lights, and home security systems, your wireless connection may degrade dramatically or drop completely. Make sure your 2.4GHz phone base is as far away from your wireless devices as possible. The base transmits a signal even if the phone is not in use.

Powerline Installation Considerations

Plan the location of your Powerline devices:

1. Connect Powerline devices to electrical outlets that are not controlled by a wall switch to avoid accidentally turning off power to the device.
2. Do not connect the Powerline devices to an extension cord, surge protector, or power strip as this might prevent it from working correctly, or negatively impact network performance.
3. Avoid using the Powerline devices in an electrical outlet that is located near an appliance that uses a lot of power, such as a washer or dryer, or a refrigerator. This may prevent the adapter from working correctly, or negatively impact network performance.
4. Verify that your Powerline devices are electrically rated to operate with the power available in your location.
5. To help prevent against electrical shock, be sure to plug the power cables into properly grounded electrical outlets.



Safety

Please read all of the safety and operating instructions before using your device:

1. Do not open the device or attempt to repair or service the device.
3. Ensure that the device is plugged into the wall in a vertical position.
4. Use the device in a dry location, and avoid placing it in humid environments.
5. Do not submerge the device in liquid or attempt to clean it with liquids or solvents. To clean the device, disconnect it from the power outlet and use a damp towel.
6. Keep the device out of direct sunlight.
7. Do not cover or block the vents on the device.
8. Make sure that the device has adequate room for ventilation.
9. Avoid placing the device near a heater or radiator.

DHP-W310AV Configuration Setup

This section covers configuration of your DHP-W310AV. The DHP-308AV does not require configuration other than the initial Powerline connection.

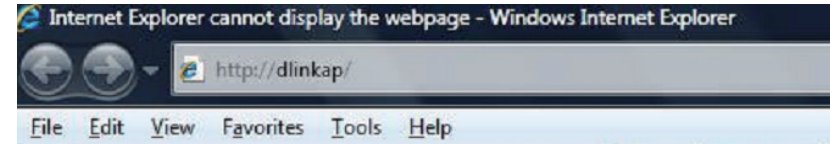
If you wish to change the default settings or optimize the performance of the DHP-W310AV, you may use the web-based configuration utility.

To access the configuration utility, open a web browser such as Internet Explorer and enter either **http://dlinkapWXYZ.local**. (this is on the Wi-Fi Configuration Card) or **http://192.168.0.50** in the address field.

By default, **Admin** will be the User Name . Leave the password blank.

If you receive a “Page Cannot be Displayed” error, please refer to “Troubleshooting” on page **52** for assistance.

You will automatically proceed to the **Setup** heading after logging in.

A screenshot of a web-based login page. The page has an orange header with the word "LOGIN" in white. Below the header, the text "Log in to the Access Point:" is displayed. There are two input fields: "User Name : Admin" (a dropdown menu) and "Password :". A "Log In" button is located at the bottom right of the form.

Hybrid Link Setup

Use the wizard's on-screen instructions to conveniently set up your network if you have not yet. You can also manually configure your network using Settings. Wi-Fi settings are covered at "Wireless Settings" on page 18 and Powerline settings are at "PLC Settings" on page 21.



Wireless Settings

The DHP-W310AV lets you customize your wireless settings for your access point. This device allows you to extend your current network so you can roam about the house while staying connected the entire time.

Wireless Network Name: Service Set Identifier (SSID) is the name of your wireless network. Create a name using up to 32 characters. The SSID is case-sensitive.

Enable Auto Channel Scan: The **Auto Channel Scan** setting can be selected to allow the DHP-W310 to choose the channel with the least amount of interference.

Wireless Channel: By default the channel is set to 1. The Channel can be changed to fit the channel setting for an existing wireless network or to customize the wireless network. If you enable Auto Channel Selection, this option will be greyed out.

Wireless Security & WPA: WPA/WPA2 is more secure than WEP. WEP should only be used if you have older devices that are unable to use WPA. Use of TKIP/AES security framework provides the optimum mix of security and compatibility. Please refer to "Wireless Security" on page 36 for more information.

Password: Choose a password that is strong. A good password uses both letters and numbers in unpredictable places. Example bad passwords could be *password* or *12345678*.

The screenshot shows the D-Link DHP-W310AV web interface. The top navigation bar includes tabs for SETUP, ADVANCED, TOOLS, STATUS, and SUPPORT. The left sidebar contains links for Setup Wizard, Wireless Settings (selected), LAN Settings, and PLC Settings. The main content area is titled 'WIRELESS SETTINGS' and contains the following sections:

- WIRELESS SETTINGS:** A text box for the Wi-Fi Network Name (SSID) with the value 'dlink-6E1B'. Below it, the 'Enable Auto Channel Scan' checkbox is checked. The 'Wireless Channel' dropdown menu is set to '11'. There are 'Save Settings' and 'Don't Save Settings' buttons.
- WI-FI NETWORK SETTINGS:** This section is currently empty.
- WI-FI SECURITY MODE:** The 'Security Mode' dropdown menu is set to 'WPA/WPA2'.
- WPA/WPA2:** A text box for the 'Network Key' contains the value 'jywfn79903'. Below the text box, it specifies '(8~63 ASCII or 64 HEX)'.

On the right side of the interface, there is a 'Helpful Hints...' section with the following text:

- Changing your Wireless Network Name is the first step in securing your wireless network. Change it to a familiar name that does not contain any personal information.
- If you have enabled Wireless Security, make sure you write down the Key or Passphrase that you have configured. You will need to enter this information on any wireless device that you connect to your wireless network.

LAN Settings

This section will allow you to change the local network settings of the DHP-W310AV and to configure the DHCP settings.

Device Name: Enter the Device Name of this DHP-W310AV. You will use this name to connect to it through a web browser. The default name is listed on your Wi-Fi Configuration Card.

LAN Connection Type: Use the drop-down menu to select Dynamic IP (DHCP) to automatically obtain an IP address on the LAN/private network. For Static IP setup, see the next page.

IPv6 Connection Type: Your Internet Service Provider (ISP) may require this to be set a certain way for Internet access. Contact your ISP regarding such requirements.

LAN IPv6 Address Settings: This shows the current IPv6 address of the DHP-W310AV on your network.

Save Settings: Click **Save Settings** to save and activate the new changes.

DHP-W310AV	SETUP	ADVANCED	TOOLS	STATUS
Hybrid Link	NETWORK SETTINGS Use this section to configure the internal network settings of your AP or wireless stations to configure the built-in DHCP server to assign IP addresses to computers on your network. The IP address that is configured here is the IP address that you use to access the Web-based management interface. If you change the IP address in this section, you may need to adjust your PC's network settings to access the network again. <input type="button" value="Save Settings"/> <input type="button" value="Don't Save Settings"/>			
Wireless Settings				
LAN Settings				
PLC Settings				
DEVICE NAME Device Name : <input type="text" value="dlinkap"/>				
LAN SETTINGS Use this section to configure the internal network settings of your AP or wireless stations. The IP address that is configured here is the IP address that you use to access the Web-based management interface. If you change the IP address here, you may need to adjust your PC's network settings to access the network again. LAN Connection Type : <input type="text" value="Dynamic IP (DHCP)"/>				
IPv6 CONNECTION TYPE Choose the mode to be used by the access point to connect to the IPv6 Internet. My IPv6 Connection is : <input type="text" value="Link-local Only"/>				
LAN IPV6 ADDRESS SETTINGS Use the section to configure the internal network settings of your AP or wireless stations. The LAN IPv6 Link-Local Address is the IPv6 Address that you use to access the Web-based management interface. LAN IPv6 Link-Local Address : fe80::257:19ff:fe08:1310 /64 <input type="button" value="Save Settings"/> <input type="button" value="Don't Save Settings"/>				

LAN Settings - Static IP

Select Static IP to manually enter the IP address, subnet mask, and default gateway addresses.

LAN Connection Type: Select Static IP from the drop-down menu.

IP Address: Enter the IP address of the DHP-W310AV. The default IP address is 192.168.0.50. If you change the IP address, once you click Apply, you will need to enter the new IP address in your browser to return to the configuration utility. You can also connect with the device name. (See previous page.)

Subnet Mask: Enter the Subnet Mask.

Default Gateway: Enter the Gateway. This is usually the LAN or internal IP address of your router.

DNS Server: This is the Domain Name Server that looks up addresses on the Internet, you may have a specific one you need to connect to.

Save Settings: Click **Save Settings** to save and activate the new changes.

LAN SETTINGS

Use this section to configure the internal network settings of your AP or wireless stations. The IP address that is configured here is the IP address that you use to access the Web-based management interface. If you change the IP address here, you may need to adjust your PC's network settings to access the network again.

LAN Connection Type :

STATIC IP LAN CONNECTION TYPE

Enter the IPv4 address information.

IPv4 Address :

Subnet Mask :

Default Gateway :

Primary DNS Server :

Secondary DNS Server :

PLC Settings

This section will show you how to configure your new D-Link Powerline AV using the web-based configuration utility.

Power Saving: Power save mode.

Network Name: You can set the name of your network and to make it either public or private. Make sure the Network Name of all of the devices within your Powerline network is the same.

Public Network Name: Select this option if you would like to make your Powerline network public with the default Network Name of "HomePlugAV". Since this is a commonly used Network Name, it is less secure than a private Network Name.

Private Network Name: Select this option if you wish to make your Powerline network more secure by using a private Network Name.

Scan: Click this button to scan for new Powerline devices. This is automatically done periodically and upon loading this page.

Member List: This section provides information on the Powerline AV devices on your Powerline network.

QoS Setting: Here you can set the Quality of Service (QoS) settings for each network device. QoS helps you prioritize network traffic based on device or the port the traffic is on.

The screenshot shows the web-based configuration utility for a D-Link W310AV device. The left sidebar contains navigation links: Hybrid Link, Wireless Settings, LAN Settings, and PLC Settings (which is highlighted). The main content area is titled 'POWER LINE SETTINGS' and includes a description: 'Using this section to configure the power line settings and QoS settings for your D-Link device.' Below this are two buttons: 'Save Settings' and 'Don't Save Settings'.

The 'POWER SAVING' section has an 'Enable' checkbox. The 'NETWORK NAME' section has two radio buttons: 'Public, Network Name is HomePlugAV' (selected) and 'Private, Network Name is' followed by a text input field.

The 'NETWORK LIST' section has a table with columns: Device Name, MAC Address, and Link Rate (Mbps). Below the table is a 'Scanning ...' button.

The 'QoS SETTING' section has a table with columns: MAC Address, Client List, Priority, and a 'Clear' button. The 'Client List' column contains a '<<' button and a 'Computer Name' dropdown menu. The 'Priority' column has a 'Highest' dropdown menu. There are four rows for device configuration.

Below the 'QoS SETTING' table is another section with columns: Port Number, TCP / UDP, and Priority. It has two rows for port configuration, each with a 'TCP' dropdown menu and a 'Highest' priority dropdown menu, and a 'Clear' button for each row.

MAC Address/Port Number: Select a device from the **Computer Name** dropdown box and then click the << above **Computer Name** to automatically fill in the device's MAC Address. Or, Set the priority for the device under the **Priority** dropdown box. Clear settings for a rule with the **Clear** button. Remember to click **Save Settings** after making changes.

Advanced

MAC Address Filter

Use MAC (Media Access Control) Filters to authorize wireless clients to access your network by their MAC addresses. When enabled, you can choose to block the devices listed, or only allow the devices listed.

MAC Filtering Set MAC Filtering to ALLOW, DENY, or OFF.
Rules: ALLOW means only the devices listed can access the network. DENY means the devices listed cannot access the network. OFF means this function is currently disabled.

Description: You may make a note for your convenience, such as “My PC” or “My friend’s smartphone”

MAC Address: Enter the MAC address you would like to filter. To find the MAC address on a computer, please refer to “Networking Basics” on page 58. Click Save Settings to activate and save.

Note: If you are filtering to ALLOW only the listed devices, make sure to add your own computer to the list or you will be denied access to the network and the configuration utility. If you DENY the listed addresses be sure not to include your computer.

DHP-W310AV

MAC Address Filter

Advanced Wireless

User Limit

SETUP

ADVANCED

TOOLS

STATUS

MAC ADDRESS FILTER

The MAC (Media Access Controller) Address filter option is used to control network access based on the MAC Address of the network adapter. A MAC address is a unique ID assigned by the manufacturer of the network adapter. This feature can be configured to ALLOW or DENY network/Internet access.

Save Settings

Don't Save Settings

25 -- MAC FILTERING RULES

Configure MAC Filtering below:

Turn MAC Filtering OFF

Remaining number of rules that can be created: 25

	Description	MAC Address	
1	<input type="text"/>	<input type="text"/> : <input type="text"/> : <input type="text"/> : <input type="text"/> : <input type="text"/> : <input type="text"/>	<div>clear</div>
2	<input type="text"/>	<input type="text"/> : <input type="text"/> : <input type="text"/> : <input type="text"/> : <input type="text"/> : <input type="text"/>	<div>clear</div>
3	<input type="text"/>	<input type="text"/> : <input type="text"/> : <input type="text"/> : <input type="text"/> : <input type="text"/> : <input type="text"/>	<div>clear</div>
4	<input type="text"/>	<input type="text"/> : <input type="text"/> : <input type="text"/> : <input type="text"/> : <input type="text"/> : <input type="text"/>	<div>clear</div>
5	<input type="text"/>	<input type="text"/> : <input type="text"/> : <input type="text"/> : <input type="text"/> : <input type="text"/> : <input type="text"/>	<div>clear</div>
6	<input type="text"/>	<input type="text"/> : <input type="text"/> : <input type="text"/> : <input type="text"/> : <input type="text"/> : <input type="text"/>	<div>clear</div>

Clear: Clear the rule from the list. Note you will have to save the settings in order for it to take effect.

Save Settings: Click **Save Settings** to save and activate the new changes.

Advanced Wireless

The Advanced Wireless section allows you to change several advanced settings on your DHP-W310AV. Most users will not need to modify this section.

Transmit Power: Sets the transmit power of the antennas.

WMM Enable: WMM is a Quality of Service (QoS) system for your wireless network. Enabling this feature will improve the quality of video and voice applications for your wireless clients.

Short GI: Check this box to reduce the guard interval time therefore increasing the data capacity. However, this setting may decrease stability and reliability.

IGMP Snooping: Select this checkbox to enable IGMP snooping. IGMP snooping is a layer 2 feature which enables the device to learn Multicast group membership based on IGMP messages passing through the built-in switch. Because the switch learns the IGMP messages and knows which clients are involved in the multicast group membership, it is able to forward multicast traffic only to the ports that requested it (based on their membership).

WLAN Partition: Select this checkbox to enable WLAN partition. If this feature is enabled, then there is no barrier between communication among wireless stations connecting to the DHP-W310AV. If this is disabled, wireless clients are not allowed to exchange data through the DHP-W310AV.

HT20/40 Coexistence: Enabling this function allows compatibility with both 802.11n devices as well as 802.11b/g at the cost of speed. Disabling this will give higher speeds but only allow 802.11n devices to function.

DHP-W310AV	SETUP	ADVANCED	TOOLS	STATUS
MAC Address Filter	ADVANCED WIRELESS These options are for users that wish to change the behaviour of their 802.11n wireless radio from the standard setting. D-link does not recommend changing these settings from factory default. Incorrect settings may impair the performance of wireless radio. The default settings should provide the best wireless radio performance in most environments. <input type="button" value="Save Settings"/> <input type="button" value="Don't Save Settings"/>			
Advanced Wireless				
User Limit				
ADVANCED WIRELESS SETTINGS				
Transmit Power : 100% <input type="button" value="v"/> WMM Enable : <input checked="" type="checkbox"/> Short GI : <input checked="" type="checkbox"/> WLAN Partition : <input type="checkbox"/> HT20/40 Coexistence : <input type="radio"/> Enable <input type="radio"/> Disable <input type="button" value="Save Settings"/> <input type="button" value="Don't Save Settings"/>				

User Limit

This screen lets you set the maximum number of wireless clients that can connect at one time to your DHP-W310AV

- Enable User Limit:** Check the Enable User Limit box to enable limiting the number of devices that can connect to the DHP-W310AV.
- User Limit:** Enter the maximum number of clients, between 1 and 32.
- Save Settings:** Click **Save Settings** to save and activate the new changes.

DHP-W310AV

MAC Address Filter

Advanced Wireless

User Limit

SETUP

ADVANCED

TOOLS

STATUS

USER LIMIT SETTINGS

Please Apply the settings to limit how many wireless stations connecting to AP.

Save SettingsDon't Save Settings

USER LIMIT SETTINGS

Enable User Limit : ☐

User Limit(1 - 32) : 10

Save SettingsDon't Save Settings

Tools Admin

This page will allow you to change the administrator password, which is used to access the configuration interface and change settings.

Password: Enter a new password for the admin user name. The administrator account can change the configuration of the device.

Verify Password: Enter the same password that you entered in the previous textbox in order to confirm its accuracy.

Enable Graphical Authentication: Enables a CAPTCHA verification which will require users to type letters or numbers from a distorted image displayed on the screen to prevent online hackers and unauthorized users from gaining access to your device's configuration. This feature is disabled by default.

Save Settings: Click **Save Settings** to save and activate the new changes.

DHP-W310AV	SETUP	ADVANCED	TOOLS	STATUS
Admin	ADMINISTRATOR SETTINGS			
System	The 'admin' account can access the management interface. The admin has read/write access and can change password.			
Firmware	By default there is no password configured. It is highly recommended that you create a password to keep your AP or wireless client secure.			
Time	<input type="button" value="Save Settings"/> <input type="button" value="Don't Save Settings"/>			
System Check	ADMIN PASSWORD			
	Please enter the same password into both boxes, for confirmation.			
	Password : <input type="password"/> Verify Password : <input type="password"/>			
	ADMINISTRATION			
	Enable Graphical : <input type="checkbox"/> Authentication			
	<input type="button" value="Save Settings"/> <input type="button" value="Don't Save Settings"/>			

System

This page lets you both save and delete settings on your DHP-W310AV.

Save Settings To Local Hard Drive: Use this option to save the current DHP-W310AV configuration settings to a file on the computer you are using. Click the **Save** button. You will then see a file dialog where you can select a location and file name for the settings.

Load Settings From Local Hard Drive: Use this option to load previously saved DHP-W310AV configuration settings. Click **Browse** to find a previously saved configuration file. Then, click the **Upload Settings** button to transfer those settings to the DHP-W310AV.

Restore to Factory Default Settings: This option will restore all configuration settings back to the settings that were in effect at the time the DHP-W310AV was shipped from the factory. Any settings that have not been saved will be lost, including any rules that you have created. If you would like to save the current DHP-W310AV configuration settings, use the **Save** button above.

Reboot the Device: Click to reboot the DHP-W310AV.

Clear Language Pack: Clears any language pack that is currently installed. For more about language packs, refer to “Firmware” on page 27.

DHP-W310AV	SETUP	ADVANCED	TOOLS	STATUS
Admin	<div>SAVE AND RESTORE SETTINGS</div> <p>Once the AP or wireless client is configured you can save the configuration settings to a configuration file on your hard drive. You also have the option to load configuration settings, or restore the factory default settings.</p> <div>SAVE AND RESTORE SETTINGS</div> <div>Save Settings To Local Hard Drive : <input type="button" value="Save"/></div> <div>Load Settings From Local Hard Drive : <input type="button" value="Choose File"/> No file chosen</div> <div><input type="button" value="Upload Settings"/></div> <div>Restore To Factory Default Settings : <input type="button" value="Restore Device"/></div> <div>Reboot The Device : <input type="button" value="Reboot the Device"/></div> <div>Clear Language Pack : <input type="button" value="Clear"/></div>			
System				
Firmware				
Time				
System Check				

Firmware

You can upgrade the firmware of the DHP-W310AV from this page. Make sure the firmware you would like to use is on the local hard drive of your computer. Click **Browse...** to locate the firmware file to be used for the update. Please check the D-Link support site for firmware updates at <http://support.dlink.com>. You can download firmware upgrades to your hard drive from the D-Link support site.

Firmware Information: Click on the blue hyperlink at the top of the page to find out if there is an updated firmware or language pack. If a new version exists, download the new firmware to your hard drive.

Firmware Upgrade: After you have downloaded the new firmware, click **Browse...** to locate the firmware update on your hard drive. Click **Upload** to complete the firmware upgrade.

Language Pack Upgrade: You can change the interface language of the device by uploading a language pack. To install a language pack, click the **Browse...** button to locate the D-Link language pack upgrade file on your computer. Once you have found the file, click the **Upload** button to begin the language pack upgrade process. This can take a minute or more. Finally, wait for the device to reboot. This process can take about 75 seconds.

DHP-W310AV	SETUP	ADVANCED	TOOLS	STATUS
Admin	FIRMWARE UPDATE <p>There may be new firmware for your AP or wireless client to improve functionality and performance. Click here to check for an upgrade on our support site.</p> <p>To upgrade the firmware, locate the upgrade file on the local hard drive with the Browse button. Once you have found the file to be used, click the Upload button to start the firmware upgrade.</p> <p>The language pack allows you to change the language of the user interface on the AP or wireless client. We suggest that you upgrade your current language pack if you upgrade the firmware. This ensures that any changes in the firmware are displayed correctly.</p> <p>To upgrade the language pack, locate the upgrade file on the local hard drive with the Browse button. Once you have found the file to be used, click the Upload button to start the language pack upgrade.</p>			
System				
Firmware				
Time				
System Check				
FIRMWARE INFORMATION <p>Current Firmware Version : 1.00</p> <p>Current Firmware Date : Fri 19 Oct 2012</p>				
FIRMWARE UPGRADE <p>Note: Some firmware upgrades reset the configuration options to the factory defaults. Before performing an upgrade, be sure to save the current configuration.</p> <p>To upgrade the firmware, your PC must have a wired connection to the AP or wireless client. Enter the name of the firmware upgrade file, and click on the Upload button.</p> <p>Upload : <input type="button" value="Choose File"/> No file chosen <input type="button" value="Upload"/></p>				
LANGUAGE PACK UPGRADE <p>Upload : <input type="button" value="Choose File"/> No file chosen <input type="button" value="Upload"/></p>				

Time

The Time Configuration option allows you to configure, update, and maintain the correct time on the internal system clock. From this section you can set the time zone that you are in. Daylight Saving can also be configured to automatically adjust the time when needed.

Time Zone: Select the Time Zone from the drop-down menu.

Daylight Saving: To enable Daylight Saving time adjustment, click the Enable Daylight Saving check box. Next, use the drop-down menu to select a Daylight Saving Offset and then enter a start date and an end date for daylight saving time.

Enable NTP Server: NTP (Network Time Protocol) allows the device to automatically set the system clock based on an Internet NTP server. Check this box to use a NTP server. This will only connect to a server on the Internet, not a local server.

NTP Server Used: Enter the NTP server or select one from the drop-down menu.

Date and Time: To manually input the time, enter the values in these fields for the Year, Month, Day, Hour, Minute, and Second and then click Save Settings. You can also click the Copy Your Computer's Time Settings button at the bottom of the screen.

Save Settings: Click **Save Settings** to save and activate the new changes.

DHP-W310AV	SETUP	ADVANCED	TOOLS	STATUS
Admin				
System				
Firmware				
Time				
System Check				
TIME The Time and Date Configuration option allows you to configure, update, and maintain the correct time on the internal system clock. From this section you can set the time zone you are in and set the NTP (Network Time Protocol) Server. Daylight Saving can also be configured to automatically adjust the time when needed. <input type="button" value="Save Settings"/> <input type="button" value="Don't Save Settings"/>				
TIME CONFIGURATION Current Time : 2000/01/02 00:05:13 Time Zone : (GMT-06:00) Central Time (US & Canada) <input type="button" value="v"/> Enable Daylight Saving : <input type="checkbox"/> Daylight Saving Offset : +01:00 <input type="button" value="v"/> Daylight Saving Dates : Dst Start : Jan <input type="button" value="v"/> 1st <input type="button" value="v"/> Sun <input type="button" value="v"/> 12 am <input type="button" value="v"/> Dst End : Jan <input type="button" value="v"/> 1st <input type="button" value="v"/> Sun <input type="button" value="v"/> 12 am <input type="button" value="v"/>				
AUTOMATIC TIME CONFIGURATION Enable NTP Server : <input type="checkbox"/> NTP Server Used : <input type="text"/> << Select NTP Server <input type="button" value="v"/> <input type="button" value="Update Now"/>				
SET THE TIME AND DATE MANUALLY Date And Time : Year 2012 <input type="button" value="v"/> Month Oct <input type="button" value="v"/> Day 23 <input type="button" value="v"/> Hour 16 <input type="button" value="v"/> Minute 38 <input type="button" value="v"/> Second 46 <input type="button" value="v"/> <input type="button" value="Copy Your Computer's Time Settings"/> <input type="button" value="Save Settings"/> <input type="button" value="Don't Save Settings"/>				

System Check

This page helps you to diagnose connection problems.

Ping Test: A ping test sends a tiny bit of information to a website and anticipates a response. Pinging an extremely stable site such as your favorite search engine or news site can help tell you if your Internet connection is working properly. If you can ping a site or address from here but your computer is getting no connectivity, then the DHP-W310AV is working properly but there is the problem with the computer.

IPv6 Ping Test: This is similar to the regular Ping Test but using a IPv6 address.

Ping Result: “Ping timeout” means that the site did not respond. This happens if the site is down or does not exist, but also if you do not have Internet connectivity. If you ping several common websites and all result in a timeout then there is likely an issue with your Internet connection. If the result says a site is alive, then your Internet connection is working.

DHP-W310AV	SETUP	ADVANCED	TOOLS	STATUS
Admin	PING TEST			
System	Ping Test sends "ping" packets to test a computer on the Internet.			
Firmware	PING TEST			
Time	Host Name or IP Address : <input type="text"/> Ping			
System Check	IPv6 PING TEST			
	Host Name or IPv6 Address : <input type="text"/> Ping			
	PING RESULT			
	Enter a host name or IP address above and click 'Ping'			

Status

Device Info

This page displays the current information for the DHP-W310AV. It will display the LAN and wireless LAN information.

General: Displays the DHP-W310AV's time and firmware version.

LAN: Displays the MAC address and the private (local) IP settings for the DHP-W310AV.

Wireless LAN: Displays the wireless MAC address and your wireless settings such as SSID and Channel.

PLC: Shows the DHP-W310AV's Powerline Connection settings.

DHP-W310AV	SETUP	ADVANCED	TOOLS	STATUS
Device Info	DEVICE INFORMATION			
Logs	All of your network connection details are displayed on this page. The firmware version is also displayed here.			
Statistics	GENERAL			
Wireless	Time : 2000/01/02 19:02:24 Firmware Version : 1.00 Tue 11 Sep 2012			
IPv6	LAN			
	Connection Type : DHCP Client MAC Address : 00:57:19:08:13:10 IP Address : 172.17.5.2 Subnet Mask : 255.255.255.0 Default Gateway : 172.17.5.254			
	WIRELESS LAN			
	Wireless Radio : Enabled MAC Address : 00:57:19:08:13:20 Channel : 1 Network Name (SSID) : W310AV Wi-Fi Protected Setup : Enabled/Configured Security : WPA/WPA2-PSK			
	PLC			
	MAC Address : 00:57:19:08:13:30 Password : HomePlugAV			

Logs

The DHP-W310AV keeps a running log of events and activities occurring on the DHP-W310AV. If the AP is rebooted, the logs are automatically cleared. You can save the log files prior to clearing them.

Log Options: You can select the types of messages that you would like to display from the log: System Activity, Wireless Activity, Critical, Warning, Information. Select the types you want to view and click **Save Settings**.

Save Log File: Save the log to your hard drive.

First Page: Go to the first page of the log.

Last Page: Go to the last page of the log.

Previous: Go to the previous page of the log.

Next: Go to the next page of the log.

Clear: This button clears all current log content.

DHP-W310AV

Device Info

Logs

Statistics

Wireless

IPv6

SETUP

ADVANCED

TOOLS

STATUS

VIEW LOG

The View Log displays the activities occurring on the DHP-W310AV.

Save Settings

Don't Save Settings

SAVE LOG FILE

Save Log File To Local Hard Drive.

Save

LOG TYPE & LEVEL

Log Type:

☒ System Activity

☐ Wireless Activity

Log Level:

☐ Critical

☐ Warning

☒ Information

LOG FILES

First Page

Last Page

Previous

Next

Clear

Page 1 of 5

Time	Message
Sun Jan 2 20:28:26 2000	Web login success from fe80::e8a0:e70:8195:a138
Sun Jan 2 20:14:04 2000	Local Hostname dlinkap.local already in use; will try dlinkap-2.local instead
Sun Jan 2 20:14:04 2000	mDNSCoreReceiveResponse: ProbeCount 0; will deregister 4 dlinkap.local. Addr 172.17.5.2
Sun Jan 2 20:14:04 2000	mDNSCoreReceiveResponse: Received from 192.168.0.117:5353 4 dlinkap.local. Addr 192.168.0.117

Statistics

The DHP-W310AV keeps statistics on the traffic that passes through it. You can view the amount of packets that pass through the LAN and wireless portions of the network. The traffic counter will reset if the DHP-W310AV is rebooted.

DHP-W310AV	SETUP	ADVANCED	TOOLS	STATUS
Device Info	TRAFFIC STATISTICS			
Logs	Traffic Statistics displays Receive and Transmit packets passing through the device.			
Statistics	<input type="button" value="Refresh"/> <input type="button" value="Reset"/>			
Wireless	LAN STATISTICS			
IPv6	<div> TX Packet Numbers: 179875 RX Packet Numbers: 177249 </div> <div> TX Packets Dropped: 0 RX Packets Dropped: 2940 </div> <div> TX Packets Bytes: 56700546 RX Packets Bytes: 38737769 </div>			
	WIRELESS STATISTICS			
	<div> TX Packet Numbers: 348206 RX Packet Numbers: 2412 </div> <div> TX Packets Dropped: 0 RX Packets Dropped: 0 </div> <div> TX Packets Bytes: 72033995 RX Packets Bytes: 308331 </div>			
	PLC STATISTICS			
	<div> TX Packet Numbers: 742301 RX Packet Numbers: 196319 </div> <div> TX Packets Dropped: 0 RX Packets Dropped: 0 </div> <div> TX Packets Bytes: 229693801 RX Packets Bytes: 70249263 </div>			

Wireless

This section allows you to view the wireless devices that are connected to your wireless DHP-W310AV.

Number of Wireless Clients: Displays the number of devies that are connected to the DHP-W310AV via wireless.

SSID: The wireless network’s name.

MAC Address: Displays the Ethernet ID (MAC address) of the wireless client.

Uptime: Shows how long that device has been connected to the DHP-W310AV.

Mode: Shows the mode the device is using to connect to your DHP-W310AV. This should be 11b, 11g, or 11n.

Rssi (%): This shows the strength of your device’s connection.

DHP-W310AV	SETUP	ADVANCED	TOOLS	STATUS
Device Info	CONNECTED WIRELESS CLIENT LIST			
Logs	View the wireless clients that are connected to the access point. (A client might linger in the list for a few minutes after an unexpected disconnect.)			
Statistics	NUMBER OF WIRELESS CLIENTS: 1			
Wireless	SSID	MAC Address	Uptime	Mode
IPv6	W310AV	00:23:DF:73:00:54	18Minutes 15Seconds	11g
				Rssi (%)
				100

IPv6

This section will display all of your IPv6 Internet and network connection details.

DHP-W310AV	SETUP	ADVANCED	TOOLS	STATUS
Device Info	IPv6 NETWORK INFORMATION			
Logs	All of your network connection details are displayed on this page.			
Statistics	IPv6 CONNECTION INFORMATION			
Wireless	IPv6 Connection Type : Link-Local Only			
IPv6	LAN IPv6 Address :			
	IPv6 Default Gateway :			
	LAN IPv6 Link-Local Address : fe80::257:19ff:fe08:1310/64			
	Primary DNS Server :			
	Secondary DNS Server :			

Support

Click on a link in the Support heading for more information on each section of the firmware.

DHP-W310AV	SETUP	ADVANCED	TOOLS	STATUS	SUPPORT
Menu	<div>SUPPORT MENU</div> <ul style="list-style-type: none">SetupAdvancedToolsStatus <div>SETUP HELP</div> <ul style="list-style-type: none">Setup WizardWireless SettingsLAN SettingsPLC Settings <div>ADVANCED HELP</div> <ul style="list-style-type: none">MAC address FilterAdvanced networkWi-Fi Protected SetupUser Limit <div>TOOLS HELP</div> <ul style="list-style-type: none">AdminSystemFirmwareTimeSystem CheckSchedules <div>STATUS HELP</div> <ul style="list-style-type: none">Device InfoWirelessLogsStatisticsIPv6				

Wireless Security

This section will show you the different levels of security you can use to protect your data from intruders. The DHP-W310AV offers the following types of security:

- WPA2 (Wi-Fi Protected Access 2)
- WPA (Wi-Fi Protected Access)
- WEP (Wired Equivalent Privacy)
- WPA2-PSK (Pre-Shared Key)
- WPA-PSK (Pre-Shared Key)

What is WEP?

WEP stands for Wired Equivalent Privacy. It is based on the IEEE 802.11 standard and uses the RC4 encryption algorithm. WEP provides security by encrypting data over your wireless network so that it is protected as it is transmitted from one wireless device to another.

To gain access to a WEP network, you must know the key. The key is a string of characters that you create. When using WEP, you must determine the level of encryption. The type of encryption determines the key length. 128-bit encryption requires a longer key than 64-bit encryption. Keys are defined by entering in a string in HEX (hexadecimal - using characters 0-9, A-F) or ASCII (American Standard Code for Information Interchange – alphanumeric characters) format. ASCII format is provided so you can enter a string that is easier to remember. The ASCII string is converted to HEX for use over the network. Four keys can be defined so that you can change keys easily.

What is WPA?

WPA, or Wi-Fi Protected Access, is a Wi-Fi standard that was designed to improve the security features of WEP (Wired Equivalent Privacy). The 2 major improvements over WEP:

- Improved data encryption through the Temporal Key Integrity Protocol (TKIP). TKIP scrambles the keys using a hashing algorithm and, by adding an integrity-checking feature, ensures that the keys haven't been tampered with. WPA2 is based on 802.11i and uses Advanced Encryption Standard (AES) instead of TKIP.
- User authentication, which is generally missing in WEP, through the extensible authentication protocol (EAP). WEP regulates access to a wireless network based on a computer's hardware-specific MAC address, which is relatively simple to be sniffed out and stolen. EAP is built on a more secure public-key encryption system to ensure that only authorized network users can access the network.

WPA-PSK/WPA2-PSK uses a passphrase or key to authenticate your wireless connection. The key is an alpha-numeric password between 8 and 63 characters long. This key must be the exact same key entered on your wireless bridge or DHP-W310AV.

WPA/WPA2 incorporates user authentication through the Extensible Authentication Protocol (EAP). EAP is built on a more secure public key encryption system to ensure that only authorized network users can access the network.

Configuring WEP

It is recommended to enable encryption on your wireless DHP-W310AV before your wireless network adapters. Please establish wireless connectivity before enabling encryption. Your wireless signal may degrade when enabling encryption due to the added overhead.

1. Log into the web-based configuration by opening a web browser and entering **http://dlinkapWXYZ.local**. (on the Wi-Fi Configuration Card) or the IP address of the DHP-W310AV (**192.168.0.50**). Click on **Setup** and then click **Wireless Settings** on the left side.
2. Next to Security Mode in the Wireless Security Mode section, select **WEP Mode**.
3. Next to WEP Encryption, select **64-bit** or **128-bit** encryption.
4. Next to WEP Key 1, enter a WEP key that you create. Make sure you enter this key exactly on all your wireless devices.
5. Next to Authentication, select **Both** or **Shared Key**.

WIRELESS SECURITY MODE

Security Mode :

WEP

WEP is the wireless encryption standard. To use it you must enter the same key(s) into the Access Point and the wireless stations. For 64 bit keys you must enter 10 hex digits into each key box. For 128 bit keys you must enter 26 hex digits into each key box. A hex digit is either a number from 0 to 9 or a letter from A to F. For the most secure use of WEP set the authentication type to "Shared Key" when WEP is enabled.

You may also enter any text string into a WEP key box, in which case it will be converted into a hexadecimal key using the ASCII values of the characters. A maximum of 5 text characters can be entered for 64 bit keys, and a maximum of 13 characters for 128 bit keys.

If you choose the WEP security option this device will **ONLY** operate in **Legacy Wireless mode (802.11B/G)**. This means you will **NOT** get 11N performance due to the fact that WEP is not supported by the Draft 11N specification.

WEP Key Length : (length applies to all keys)

WEP Key 1 :

Authentication :

Configuring WPA/WPA2 Personal

It is recommended to enable encryption on your wireless DHP-W310AV before your wireless network adapters. Please establish wireless connectivity before enabling encryption. Your wireless signal may degrade when enabling encryption due to the added overhead.

1. Log into the web-based configuration by opening a web browser and entering the IP address of the DHP-W310AV (**192.168.0.50**) or **http://dlinkapWXYZ.local**. (on the Wi-Fi Configuration Card) then click on **Setup** and then click **Wireless Settings** on the left side.

2. For **Security Mode**, select **WPA/WPA2Personal**.

3. For **Wi-Fi Password**, enter a key. The password must be between 8-63 characters and use numbers, letters, and/or special characters.

6. Click **Save Settings** at the top of the window to save your settings. If you are configuring the DHP-W310AV with a wireless adapter, you will lose connectivity until you enable WPA on your adapter and enter the same passphrase as you did on the DHP-W310AV.

EXTENDED WI-FI NETWORK SETTINGS

Hybrid Router Wi-Fi Network : Disconnect Name

Extended Wi-Fi Network Name : ☐ Same as Hybrid Router Wi-Fi Network Name ☐ Create a new Wi-Fi Network Name

WI-FI SECURITY MODE

Security Mode :

WPA

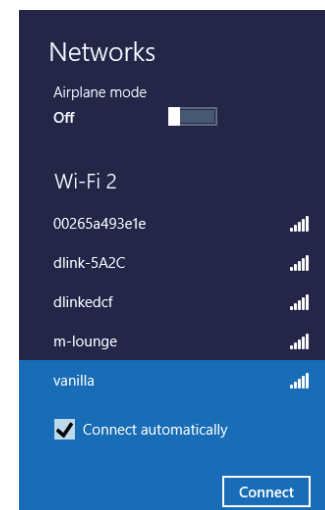
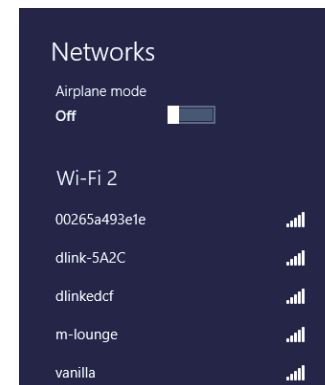
Use Auto WPA or WPA2(TKIP and AES)mode to achieve a balance of strong security and best compability. This mode use WPA for legacy clients while maintaing higher security with stations that are WPA2 capable

Enter an 8 to 63 character alphanumeric pass-phrase. For good security, it should be of ample length and should not be a commonly known phrase.

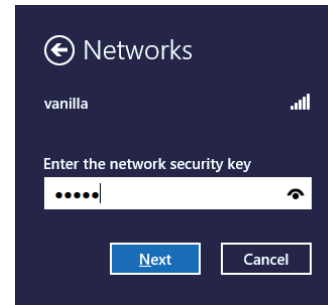
Wi-Fi Password :

Connecting to a Wireless Network Using Windows® 8

1. Click on the wireless computer icon in your system tray (lower-right corner next to the time).
2. A list of available wireless networks will appear.
3. Click the wireless network (SSID) you want to connect to and then click **Connect**.

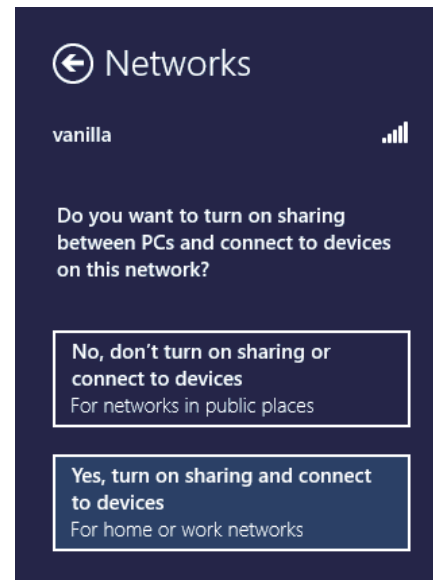


4. If the network is secure/encrypted, enter the Wi-Fi password (security key) and click **Next**.



5. Click either to enable or disable file sharing.

6. You will now be connected to your wireless network.

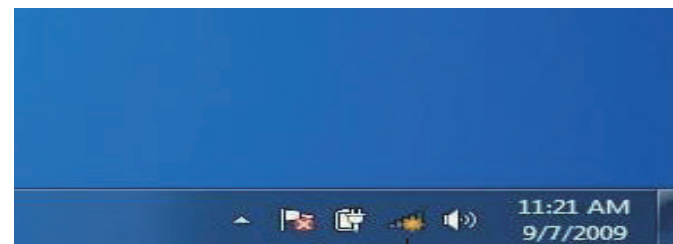


If you get a good signal but cannot access the Internet, confirm the encryption by reviewing the profile or check the TCP/IP settings for your wireless adapter. Refer to the *Networking Basics* section in this manual for more information.

Using Windows® 7

It is recommended to enable wireless security (WPA/WPA2) on your DHP-W310AV before configuring your wireless adapter. If you are joining an existing network, you will need to know the security key or passphrase being used.

1. Click on the wireless icon in your system tray (lower-right corner).



Wireless Icon

2. The utility will display any available wireless networks in your area.

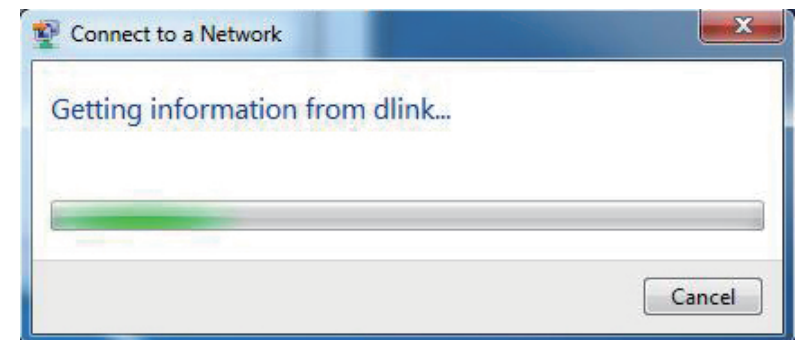


3. Highlight the wireless network (SSID) you would like to connect to and click the Connect button. The Wi-Fi Configuration Card will list your device's specific network, it will not be simply dlink.

If you get a good signal but cannot access the Internet, check your TCP/IP settings for your wireless adapter. Refer to the Networking Basics section in this manual for more information.



4. The following window appears while your computer tries to connect to the router.

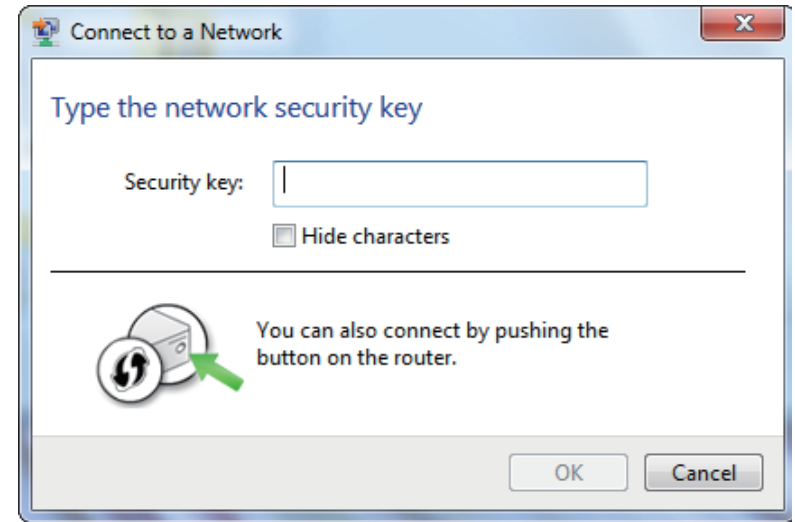


Section 3 - Configuration

5. Enter the same security key or passphrase that is on your DHP-W310AV and click **Connect**.

It may take 20-30 seconds to connect to the wireless network. If the connection fails, please verify that the security settings are correct. The key or passphrase must be exactly the same as on the wireless router.

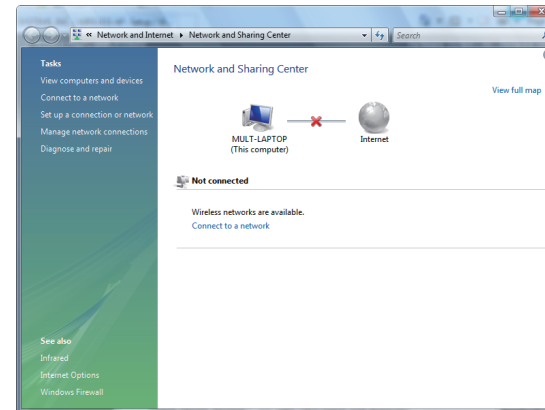
Additionally, you may connect using Wi-Fi Protected Setup (WPS) and Push Button Configuration (PBC). When the window to the right is displayed, press the Common Connect Button on the DHP-W310AV.



Using Windows Vista®

Windows Vista® users may use the convenient, built-in wireless utility. Follow these instructions:

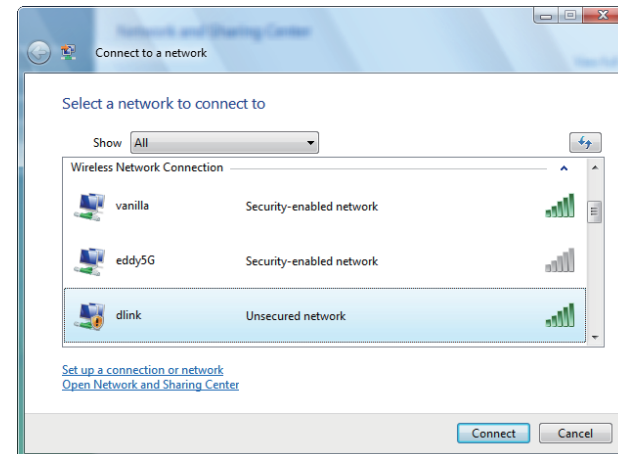
From the **Start menu**, go to **Control Panel**, and then click on Network and Sharing Center.



The utility will display any available wireless networks in your area. Click on a network (displayed using the SSID) and click the **Connect** button. The Wi-Fi Configuration Card will list your device's specific network, it will not be simply dlink.

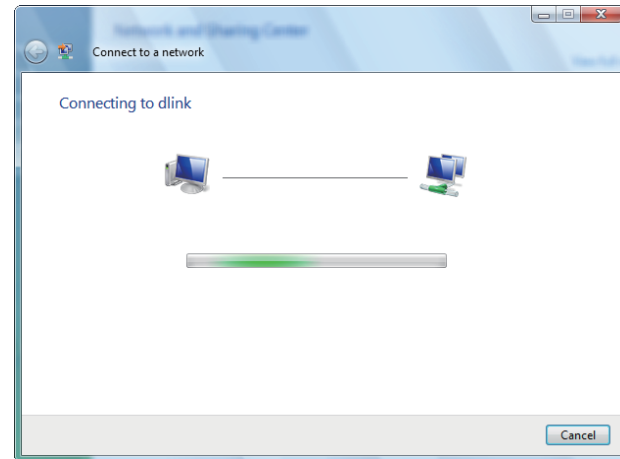
If you get a good signal but cannot access the Internet, check you TCP/IP settings for your wireless adapter. Refer to the **Networking Basics** section in this manual for more information.

Click **Connect Anyway** to continue.



Section 3 - Configuration

The utility will display the following window to indicate a connection is being made.



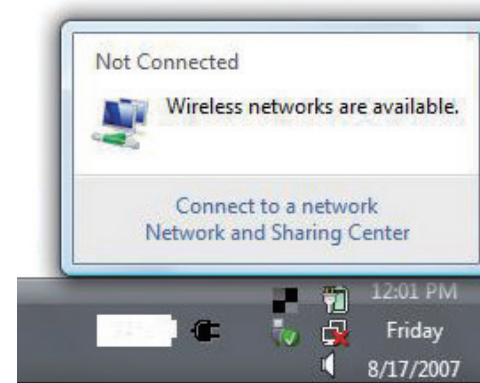
The final window indicates the establishment of a successful connection.

The next two pages display the windows used to connect to either a WEP or a WPA-PSK wireless network.

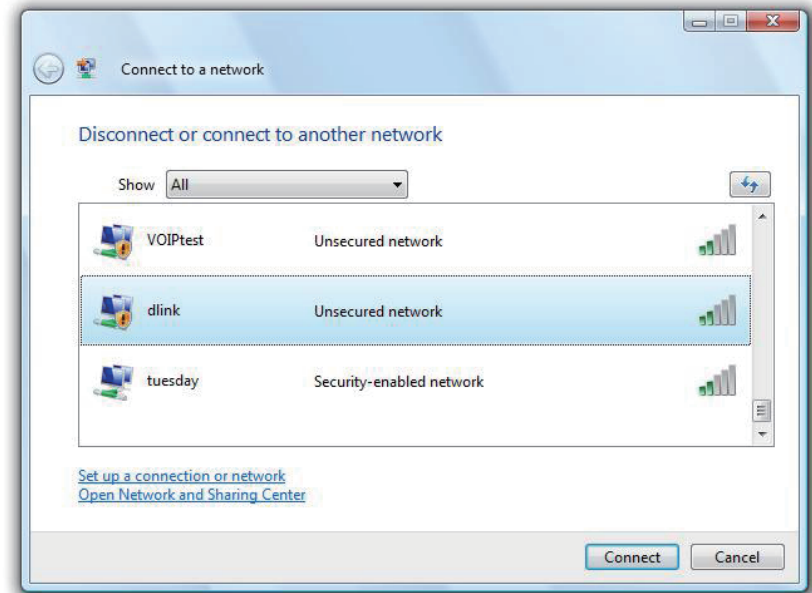
Configuring Wireless Security

It is recommended to enable wireless security (WPA/WPA2) on your wireless router or DHP-W310AV before configuring your wireless adapter. If you are joining an existing network, you will need to know the security key or passphrase being used.

1. Open the Windows Vista® Wireless Utility by right-clicking on the wireless computer icon in your system tray (lower right corner of screen). Select **Connect to a network**.

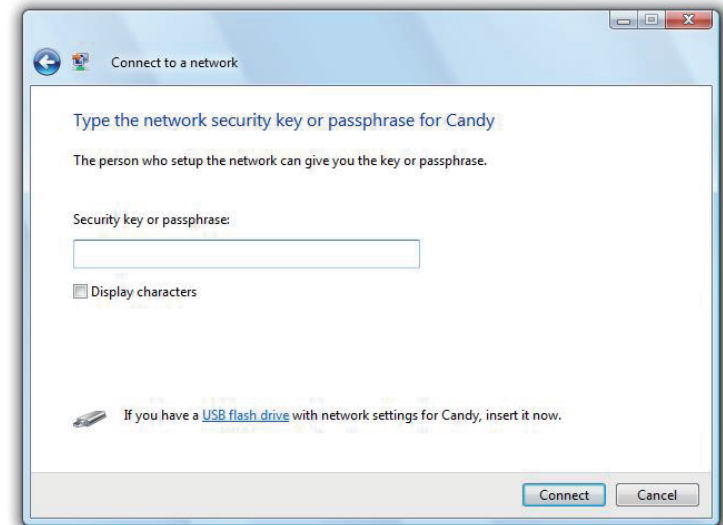


2. Highlight the wireless network (SSID) you would like to connect to and click **Connect**.



3. Enter the same security key or passphrase that is on your router and click **Connect**.

It may take 20-30 seconds to connect to the wireless network. If the connection fails, please verify that the security settings are correct. The key or passphrase must be exactly the same as on the wireless router.



Using Windows® XP

Windows XP users may use the built-in wireless utility (Zero Configuration Utility). The following instructions are for Service Pack 2 users. If you are using another company's utility or Windows 2000, please refer to the user manual of your wireless adapter for help with connecting to a wireless network. Most utilities will have a "site survey" option similar to the Windows XP utility as seen below.

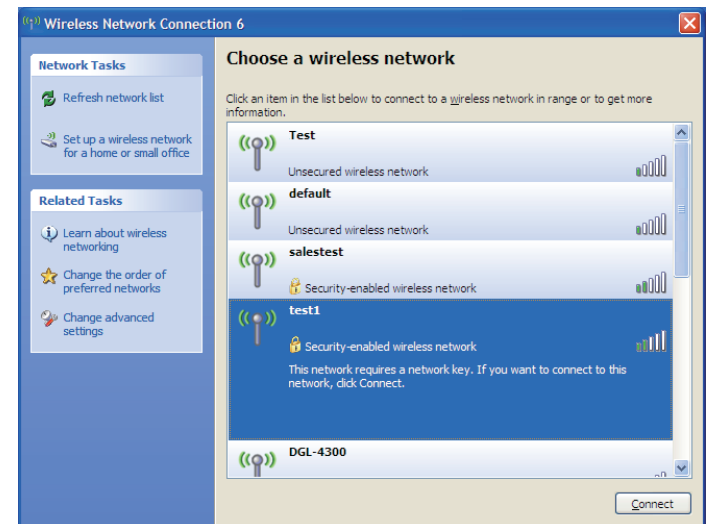
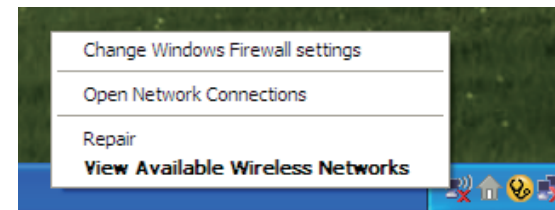
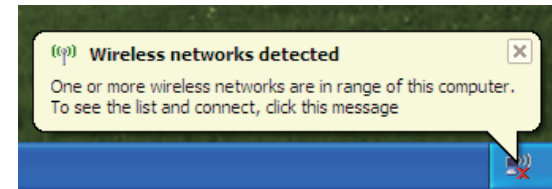
If you receive the **Wireless Networks Detected** bubble, click on the center of the bubble to access the utility.

or

Right-click on the wireless computer icon in your system tray (lower right corner next to the time). Select **View Available Wireless Networks**.

The utility will display any available wireless networks in your area. Click on a network (displayed using the SSID) and click the **Connect** button. The Wi-Fi Configuration Card will list your device's specific network, it will not be simply dlink.

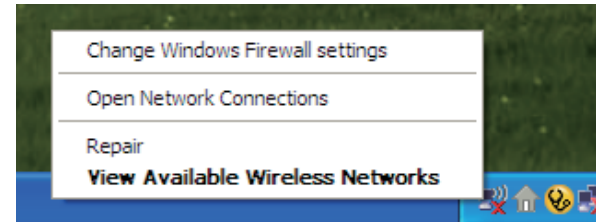
If you get a good signal but cannot access the Internet, check your TCP/IP settings for your wireless adapter. Refer to the **Networking Basics** section in this manual for more information.



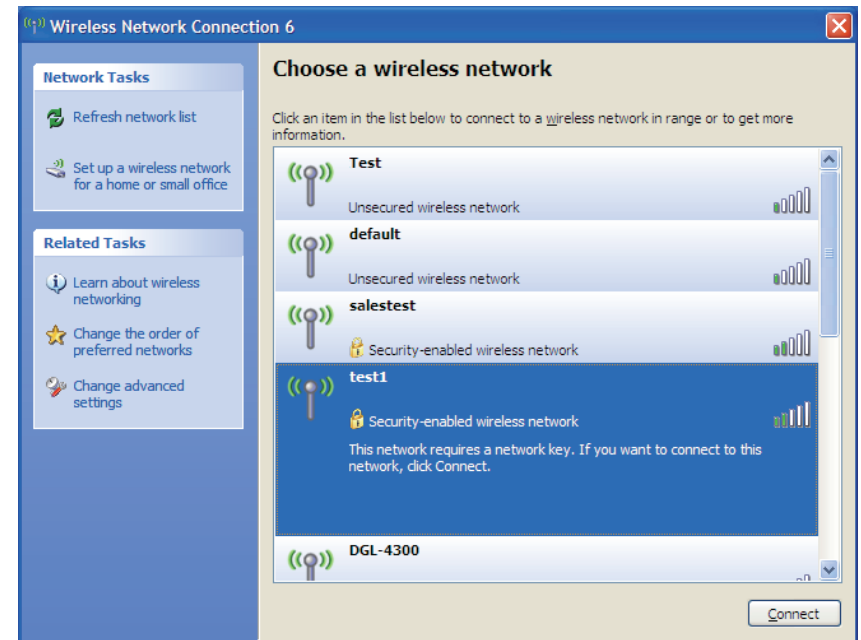
Configuring WPA-PSK

It is recommended to enable encryption on your wireless router or DHP-W310AV before configuring your wireless adapter. If you are joining an existing network, you will need to know the passphrase being used.

1. Open the Windows® XP Wireless Utility by right-clicking on the wireless computer icon in your system tray (lower-right corner of screen). Select **View Available Wireless Networks**.

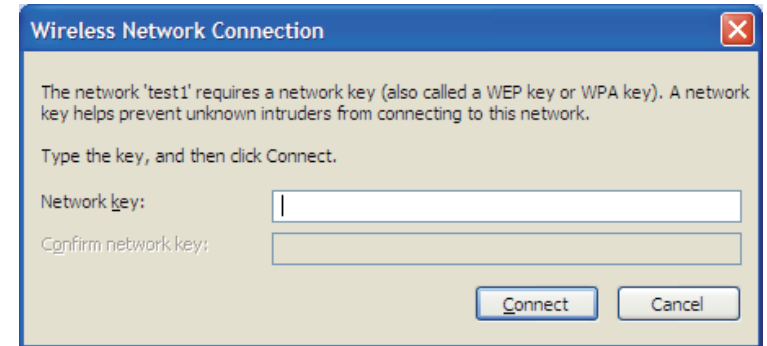


2. Highlight the wireless network (SSID) you would like to connect to and click **Connect**.



3. The **Wireless Network Connection** box will appear. Enter the WPA-PSK passphrase and click **Connect**.

It may take 20-30 seconds to connect to the wireless network. If the connection fails, please verify that the WPA-PSK settings are correct. The WPA-PSK passphrase must be exactly the same as on the wireless router.



Troubleshooting

This chapter provides solutions to problems that can occur during the installation and operation of the DHP-W310AV. Read the following descriptions if you are having problems. (The examples below are illustrated in Windows® XP. If you have a different operating system, the screenshots on your computer will look similar to the following examples.)

1. Why am I unable to access the web-based configuration utility?

When entering the IP address of the D-Link DHP-W310AV (**192.168.0.50**), you are not connecting to a website on the Internet or have to be connected to the Internet. The device has the utility built-in from the factory. Your computer must be on the same IP subnet to connect to the web-based utility. You may also enter **http://dlinkapWXYZ.local**. (on the Wi-Fi Configuration Card) instead of the IP address.

- Make sure you have an updated Java-enabled web browser. We recommend the following:
 - Microsoft Internet Explorer® 7.0 and higher
 - Mozilla Firefox 3.5 and higher
 - Google™ Chrome 8.0 and higher
 - Apple Safari 4.0 and higher
- Verify physical connectivity by checking for solid link lights on the device. If you do not get a solid link light, try using a different cable or connect to a different port on the device if possible. If the computer is turned off, the link light may not be on.
- Disable any internet security software running on the computer. Software firewalls such as Zone Alarm, Black Ice, Sygate, Norton Personal Firewall, and Windows® XP firewall may block access to the configuration pages. Check the help files included with your firewall software for more information on disabling or configuring it.

- Configure your Internet settings:
- Go to **Start > Settings > Control Panel**. Double-click the Internet Options Icon. From the Security tab, click the button to restore the settings to their defaults.
- Click the Connection tab and set the dial-up option to Never Dial a Connection. Click the **LAN Settings** button. Make sure nothing is checked. Click **OK**.
- Go to the Advanced tab and click the Reset... button to restore these settings to their defaults. Click **OK** three times.
- Close your web browser (if open) and open it.
- Access the web management. Open your web browser and enter the IP address of your D-Link DHP-W310AV in the address bar. This should open the login page for your the web management.
- If you still cannot access the configuration, unplug the power to the DHP-W310AV for 10 seconds and plug back in. Wait about 30 seconds and try accessing the configuration. If you have multiple computers, try connecting using a different computer.

2. What can I do if I forgot my password?

If you forgot your password, you must reset your DHP-W310AV. Unfortunately this process will change all your settings back to the factory defaults. To reset the DHP-W310AV, locate the reset button (hole) on the rear panel of the unit. With the DHP-W310AV powered on, use a paperclip to hold the button down for 5 seconds. Release the button and the DHP-W310AV will go through its reboot process. Wait about 30 seconds to access the DHP-W310AV. The default IP address is 192.168.0.50. When logging in, the username is Admin and leave the password box empty

3. Why can't my Powerline AV device detect my other Powerline AV devices?

This may due to the accidental change of the device password. Use the web-based configuration utility and select **Setup > PLC SETTINGS**. Fill in the password in the blank. Then repeat the same procedure to the other Powerline AV device via web-based configuration utility.

4. I cannot start my Powerline AV device.

Please check your power supply is working. Powerline AV device operates from the power supplied by the home electrical wiring and can not operate without a working power supply.

Wireless Basics

D-Link wireless products are based on industry standards to provide easy-to-use and compatible high-speed wireless connectivity within your home, business or public access wireless networks. Strictly adhering to the IEEE standard, the D-Link wireless family of products will allow you to securely access the data you want, when and where you want it. You will be able to enjoy the freedom that wireless networking delivers.

A wireless local area network (WLAN) is a cellular computer network that transmits and receives data with radio signals instead of wires. Wireless LANs are used increasingly in both home and office environments, and public areas such as airports, coffee shops and universities. Innovative ways to utilize WLAN technology are helping people to work and communicate more efficiently. Increased mobility and the absence of cabling and other fixed infrastructure have proven to be beneficial for many users.

Wireless users can use the same applications they use on a wired network. Wireless adapter cards used on laptop and desktop systems support the same protocols as Ethernet adapter cards. Under many circumstances, it may be desirable for mobile network devices to link to a conventional Ethernet LAN in order to use servers, printers or an Internet connection supplied through the wired LAN.

What is Wireless?

Wireless or Wi-Fi technology is another way of connecting your computer to the network without using wires. Wi-Fi uses radio frequency to connect wirelessly, so you have the freedom to connect computers anywhere in your home or office.

D-Link is the worldwide leader and award winning designer, developer, and manufacturer of networking products. D-Link delivers the performance you need at a price you can afford. D-Link has all the products you need to build your network.

How does wireless work?

Wireless works similar to how cordless phone work, through radio signals to transmit data from one point A to point B. But wireless technology has restrictions as to how you can access the network. You must be within the wireless network range area to be able to connect your computer. There are two different types of wireless networks Wireless Local Area Network (WLAN), and Wireless Personal Area Network (WPAN).

Wireless Local Area Network (WLAN)

In a wireless local area network, a device called an DHP-W310AV (AP) connects computers to the network. The DHP-W310AV has a small antenna attached to it, which allows it to transmit data back and forth over radio signals. With an indoor DHP-W310AV as seen in the picture, the signal can travel up to 300 feet. With an outdoor DHP-W310AV the signal can reach out up to 30 miles to serve places like manufacturing plants, industrial locations, college and high school campuses, airports, golf courses, and many other outdoor venues.

Who uses wireless?

Wireless technology has become so popular in recent years that almost everyone is using it. Whether it's for home, or office D-Link has a wireless solution for it.

Home

- Gives everyone at home broadband access
- Surf the web, check email, instant message, etc.
- Gets rid of the cables around the house
- Simple and easy to use

Small Office and Home Office

- Stay on top of everything at home as you would at office
- Remotely access your office network from home
- Share Internet connection and printer with multiple computers
- No need to dedicate office space

Where is wireless used?

Wireless technology is expanding everywhere not just at home or office. People like the freedom of mobility and it's becoming so popular that more and more public facilities now provide wireless access to attract people. The wireless connection in public places is usually called "hotspots".

Using a D-Link Cardbus Adapter with your laptop, you can access the hotspot to connect to Internet from remote locations like: Airports, Hotels, Coffee Shops, Libraries, Restaurants, and Convention Centers.

A wireless network is easy to setup, but if you're installing it for the first time it could be quite a task not knowing where to start. That's why we've put together a few setup steps and tips to help you through the process of setting up a wireless network.

Tips

Here are a few things to keep in mind, when you install a wireless network.

Centralize your DHP-W310AV

Make sure you place the bridge/DHP-W310AV in a centralized location within your network for the best performance. Try to place the bridge/DHP-W310AV as high as possible in the room, so the signal gets dispersed throughout your home. If you have a two-story home, you may need a repeater to boost the signal to extend the range.

Eliminate Interference

Place home appliances such as cordless telephones, microwaves, wireless speakers, and televisions as far away as possible from the bridge/DHP-W310AV. This would significantly reduce any interference that the appliances might cause since they operate on same frequency.

Security

Don't let your next-door neighbors or intruders connect to your wireless network. Secure your wireless network by turning on the WPA, WPA2, or WEP security feature on the DHP-W310AV.

Networking Basics

Check your IP address

After you install your new D-Link adapter, by default, the TCP/IP settings should be set to obtain an IP address from a DHCP server (i.e. wireless router) automatically. To verify your IP address, please follow the steps below.

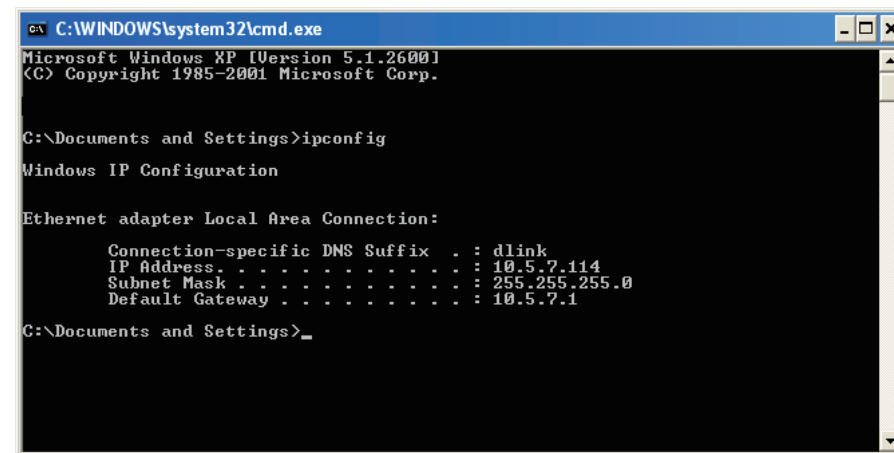
Click on **Start > Run**. In the run box type **cmd** and click **OK**. (Windows® 7/ Vista® users type **cmd** in the Start Search box.)

At the prompt, type **ipconfig** and press **Enter**.

This will display the IP address, subnet mask, and the default gateway of your adapter.

If the address is 0.0.0.0, check your adapter installation, security settings, and the settings on your DHP-W310AV. Some firewall software programs may block a DHCP request on newly installed adapters.

If you are connecting to a wireless network at a hotspot (e.g. hotel, coffee shop, airport), please contact an employee or administrator to verify their wireless network settings.



```
C:\WINDOWS\system32\cmd.exe
Microsoft Windows XP [Version 5.1.2600]
(C) Copyright 1985-2001 Microsoft Corp.

C:\Documents and Settings>ipconfig

Windows IP Configuration

Ethernet adapter Local Area Connection:

    Connection-specific DNS Suffix  . : dlink
    IP Address. . . . . : 10.5.7.114
    Subnet Mask . . . . . : 255.255.255.0
    Default Gateway . . . . . : 10.5.7.1

C:\Documents and Settings>
```

Statically Assign an IP address

If you are not using a DHCP capable gateway/DHP-W310AV, or you need to assign a static IP address, please follow the steps below:

Step 1

Windows 8 - Press the Windows key >type IP>Click Settings on the right side >click View Network Connections

Windows 7 - Click on Start > Control Panel > Network and Internet > Network and Sharing Center > Change adapter settings

Windows Vista® - Click on Start > Control Panel > Network and Internet > Network and Sharing Center > Manage Network Connections.

Windows® XP - Click on Start > Control Panel > Network Connections.

Windows® 2000 - From the desktop, right-click My Network Places > Properties.

Step 2

Right-click on the Local Area Connection which represents your D-Link network adapter and select Properties.

Step 3

Highlight Internet Protocol (TCP/IP) and click Properties.

Step 4

Click Use the following IP address and enter an IP address that is on the same subnet as your network or the LAN IP address on your router.

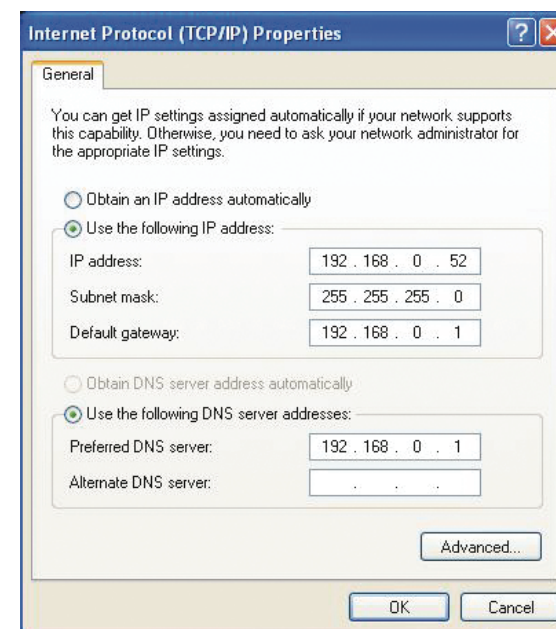
Example: If the AP's LAN IP address is 192.168.0.50, make your IP address 192.168.0.X where X is a number between 2 and 99 (excluding the number 50). Make sure that the number you choose is not in use on the network. Set Default Gateway the same as the LAN IP address of your router (192.168.0.1).

Set Primary DNS the same as the LAN IP address of your router (192.168.0.1).

The Secondary DNS is not needed or you may enter a DNS server from your ISP.

Step 5

Click **OK** twice to save your settings.



Technical Specifications (DHP-W310AV)

Standards

- IEEE 802.11n
- IEEE 802.11g
- IEEE 802.3
- IEEE 802.3u
- IEEE P1905.1 draft
- IEEE 1901

Network Interfaces

- One 10/100 Ethernet port
- Wireless N
- Powerline

AC Input

- 100 - 240 VAC 50/60 Hz

Security

- WPA
- WPA2
- WEP

Wireless Signal Rates*

- | | |
|-----------|-----------|
| • 300Mbps | • 12Mbps |
| • 108Mbps | • 11Mbps |
| • 54Mbps | • 9Mbps |
| • 48Mbps | • 6Mbps |
| • 36Mbps | • 5.5Mbps |
| • 18Mbps | • 2Mbps |
| • 24Mbps | • 1Mbps |

MSC (0-15)

- | | |
|-----------------|--------------------|
| • 130Mbps (270) | • 117Mbps (243) |
| • 104Mbps (216) | • 78Mbps (162) |
| • 66Mbps (135) | • 58.5Mbps (121.5) |
| • 52Mbps (108) | • 39Mbps (81) |
| • 26Mbps (54) | • 19.5Mbps (40.5) |
| • 12Mbps (27) | • 6.5Mbps (13.5) |

Frequency Range

- 2.4GHz to 2.497GHz

Encryption

- 128-bit AES
- WEP/WPA/WPA2

Operating Temperature

- 32 to 104 °F (0 to 40 °C)

Storage Temperature

- 14 to 158 °F (-10 to 70 °C)

Humidity

- Operation: 10% to 90% Relative Humidity
- Storage: 5% to 90% Relative Humidity

Transmitter Output Power

- 14 dBm (+/- 2dB)

* Maximum wireless signal rate derived from IEEE Standard 802.11g and 802.11n specifications. Actual data throughput will vary. Network conditions and environmental factors, including volume of network traffic, building materials and construction, and network overhead, lower actual data throughput rate. Environmental factors will adversely affect wireless signal range.

LEDs

- Power
- Ethernet
- WLAN
- Powerline

Safety & Emissions

- FCC
- CE
- RoHS
- UL, CE LVD

Dimensions

- 39.35x58.2x105mm (1.55x2.30x4.14 inch)

Weight

- United Kingdom: 0.145 kg (0.33 lbs)
- Europe: 0.142 kg (0.32 lbs)

Technical Specifications (DHP-308AV)

Network Ports

- One Ethernet port

AC Input

- 100-240V, 50/60Hz, 0.1A

Standard

- Compatible with IEEE1901
- Homeplug AV

EMC

- CE Class B / FCC

Safety

- CE LVD / UL

Encryption

- 128-bit AES

Operation Temperature

- 0 ~ 40 °C

Storage Temperature

- -10 ~ 70 °C

Humidity

- Operation: 10% ~ 90% RH
- Storage: 5% ~ 90% RH

Dimension:

- 70mm x 52mm x 26mm (2.76in*2.05in*1.03in)

Weight:

- Europe: 0.17kg (0.38lb)
- United Kingdom: 0.22kg (0.49lb)