



# User Manual

## PowerLine AV Mini Adapter

---

# Preface

D-Link reserves the right to revise this publication and to make changes in the content hereof without obligation to notify any person or organization of such revisions or changes.

## Manual Revisions

Revision	Date	Description
1.2	July 19, 2012	• Text Modification

## Trademarks

D-Link and the D-Link logo are trademarks or registered trademarks of D-Link Corporation or its subsidiaries in the United States or other countries. All other company or product names mentioned herein are trademarks or registered trademarks of their respective companies.

Copyright © 2012 by D-Link Systems, Inc.

All rights reserved. This publication may not be reproduced, in whole or in part, without prior expressed written permission from D-Link Systems, Inc.

# Table of Contents

<b>Preface</b> .....	2	<b>Installation Considerations</b> .....	18
Manual Revisions .....	2	PowerLine Installation Considerations .....	18
Trademarks .....	2	<b>Troubleshooting</b> .....	20
<b>Product Overview</b> .....	4	<b>Technical Specifications</b> .....	21
Package Contents .....	4		
System Requirements .....	4		
Introduction .....	5		
Features .....	5		
Hardware Overview .....	6		
LEDs .....	6		
Connection .....	7		
Simple Connect Button .....	8		
<b>Hardware Installation</b> .....	9		
Push Button Security .....	10		
<b>Configuration</b> .....	13		
Using the Setup Wizard .....	13		
Configuration .....	14		
Security .....	13		

# Package Contents

## DHP- 310AV

- D-Link DHP-310AV PowerLine AV Mini Adapter
- Ethernet Cable
- CD-ROM with User Manual and Utility
- Quick Install Guide

## DHP-311AV

- D-Link DHP-310AV PowerLine AV Mini Adapter X2
- Ethernet Cable X2
- CD-ROM with User Manual and Utility
- Quick Install Guide



# System Requirements

- Windows® 7, Windows Vista®, XP (with Service Pack 3)
- Ethernet interface (10/100/1000 Mbps)
- PC with 1.5GHz Processor
- 1 GB Memory

# Introduction

D-Link announces a fast, 200Mbps\* PowerLine AV Mini Adapter which allows you to connect your home computers, networking devices and gaming devices through the most pervasive medium in your house - the electric powerLines - and share Internet connections, printers, transfer files, play games, and more.

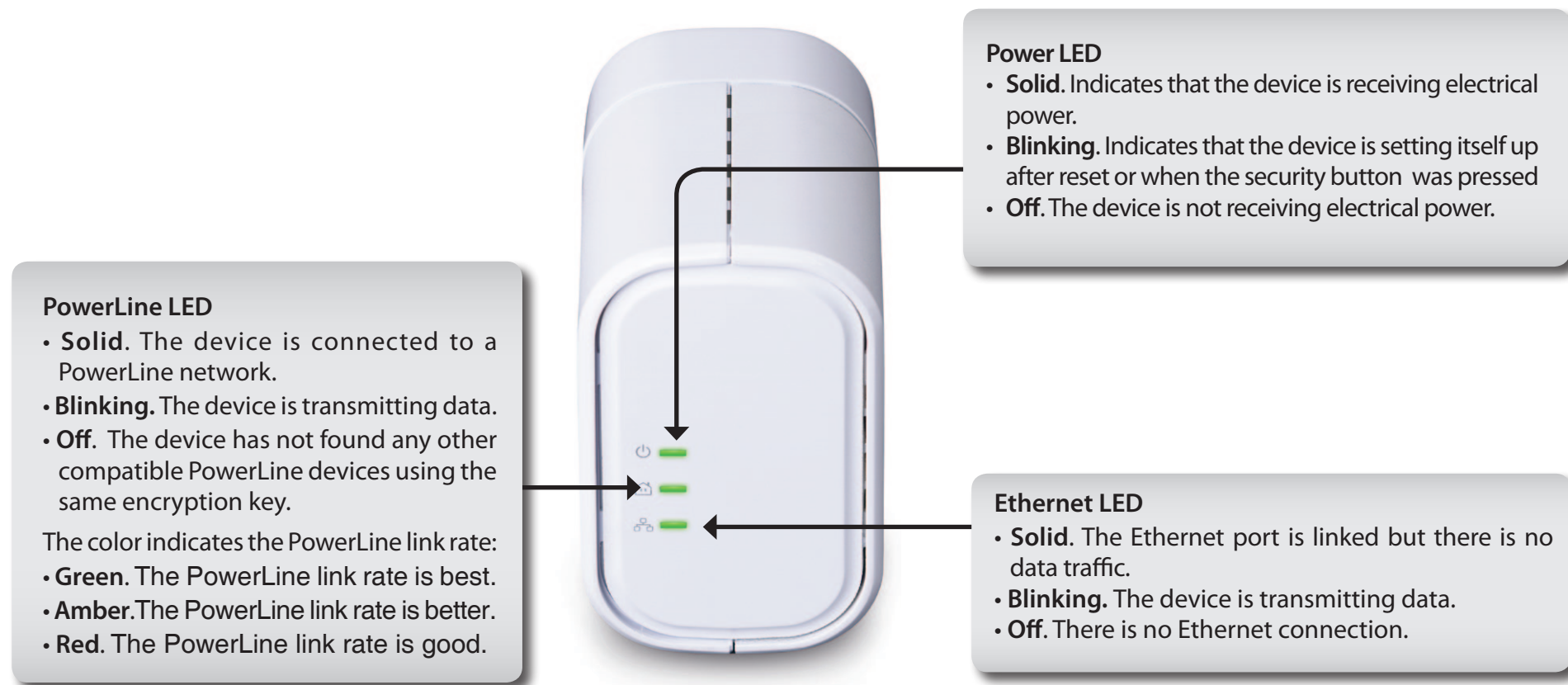
## Features

- Provides Ethernet to PowerLine Connection
- Fast Data Transfer Rate of Up to 200Mbps\*
- One Ethernet port
- Plug & Play, Easy Installation
- Push Button Security

\* Maximum throughput based on theoretical transmission PHY rate. Actual data throughput will vary. Network conditions and environmental factors, including volume of traffic and network overhead, may lower actual data throughput rate. Interference from devices that emit electrical noise, such as vacuum cleaners and hair dryers, may adversely affect the performance of this product. This product may interfere with devices such as lighting systems that have a dimmer switch, short wave radios, or other powerLine devices that do not follow the HomePlug AV and IEEE1901 standard.

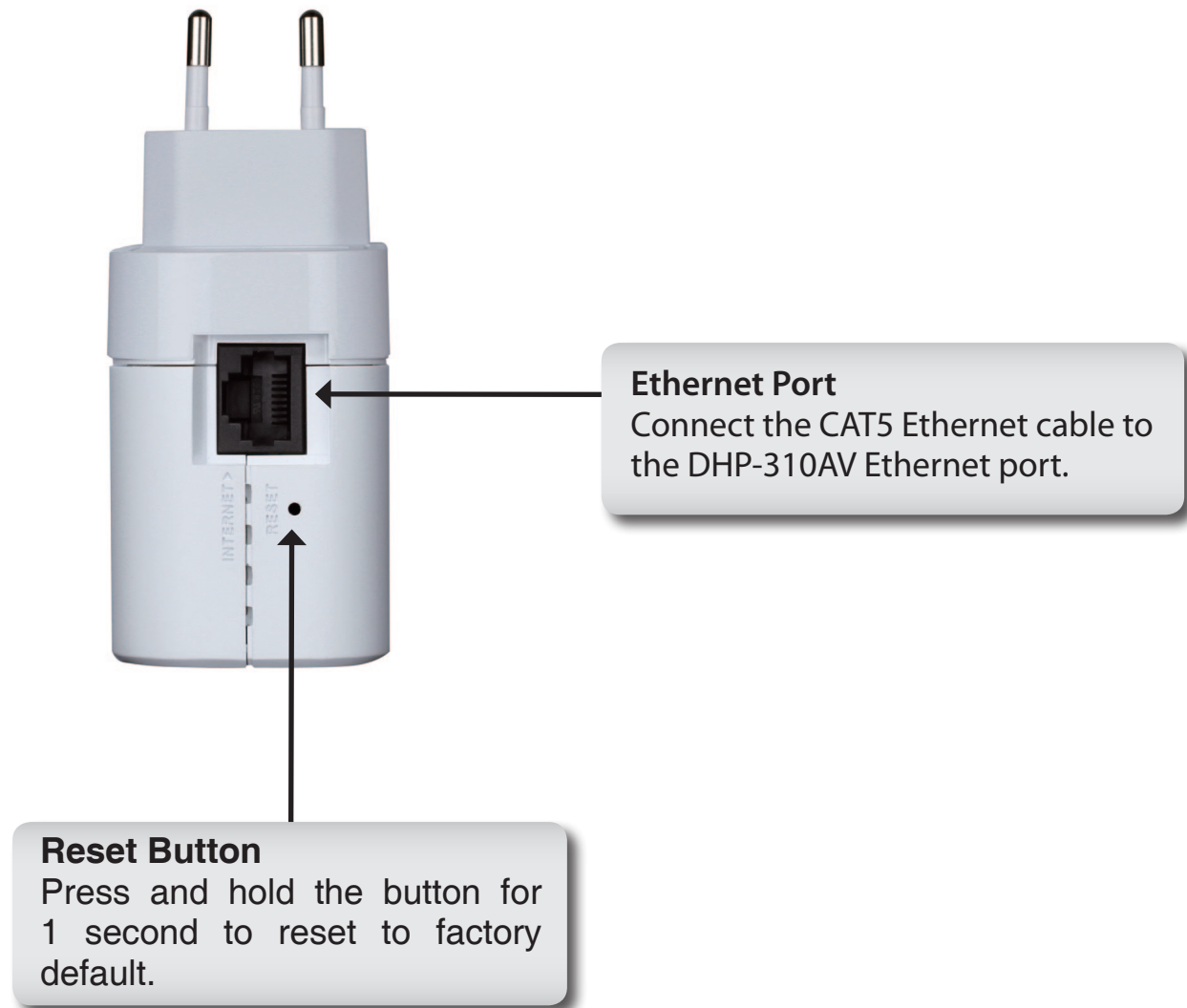
# Hardware Overview

## LEDs



# Hardware Overview

## Connection



# Hardware Overview

## Simple Connect Button



**Simple Connect Button**  
Press to secure your network. Refer to page 10 for more information.



# Hardware Installation

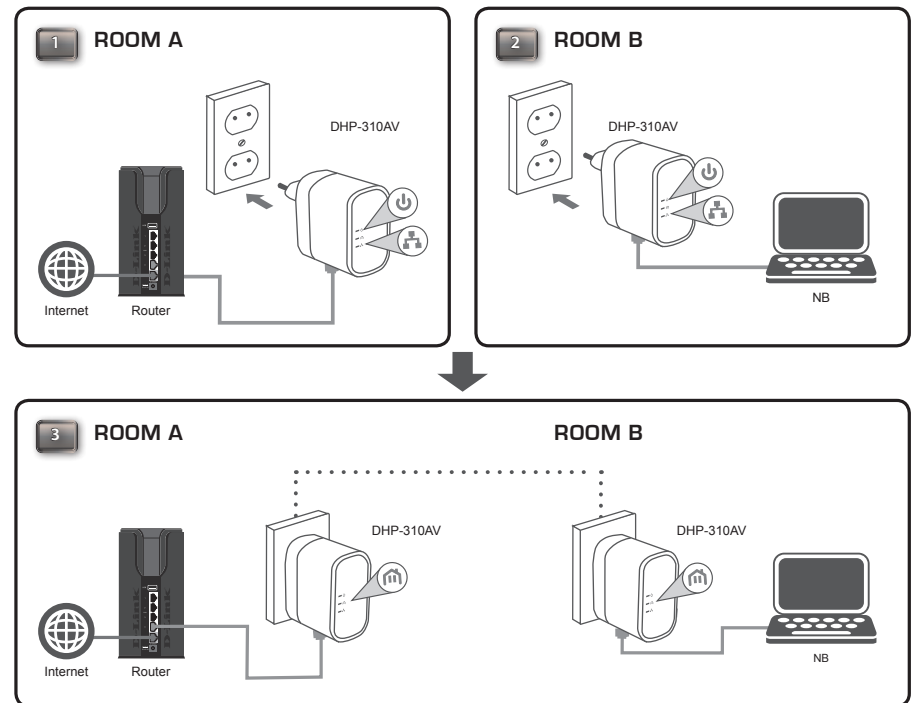
## Power

Plug in the DHP-310AV into an AC wall outlet or power strip.

**Note:** Power source is confirmed when the Power LED on the DHP-310AV is illuminated.

## Connect the Ethernet Cable

Connect the included Ethernet cable to the network cable connector located on the DHP-310AV and attach the other end of the Ethernet cable to the network or PC. Network Connectivity is confirmed when the Ethernet LED on the DHP-310AV are illuminated.



# Push Button Security

## Understanding PowerLine AV Mini Adapter Security

The PowerLine AV Mini Adapters on the same network must use an identical encryption key. The default encryption key of each PowerLine AV Mini Adapter is **HomePlug AV**. All PowerLine AV Mini Adapters with default encryption key can communicate with each other.

It's recommended to create a private encryption key for network security purpose. The private encryption key allows you to protect your network from unauthorized access via the PowerLine network. To create a private encryption key instead of the default encryption key, please follow below steps:

### 1. All Adapters

Plug in all the adapters to be configured and make sure each device's encryption key is set to **HomePlug AV** (default value). If the encryption key is not set to the default value, press the reset button for 1 second for resetting it to the default value.

### 2. First Adapter

Press Simple connect button of the first adapter for no more than three seconds.

The Power LED will start blinking after you release the button. The adapter will create a private, randomly generated encryption key that each PowerLine AV Mini Adapter will use.

### 3. Second Adapter

Within two minutes of pushing the Simple connect button of the first adapter, press Simple connect button of second adapter in your PowerLine network for no more than three seconds. The Power LED will start blinking after you release the button.

Note: Both Simple connect buttons must be pressed within two minutes.

After above network security setup steps, your PowerLine network will be securely configured with the same network encryption key. The adapters will memorize the security settings even if they are unplugged.

Note: To change the private encryption key, please reset the adapter back to its default value by pressing the reset button for 1 second and then follow the security setup procedure above.

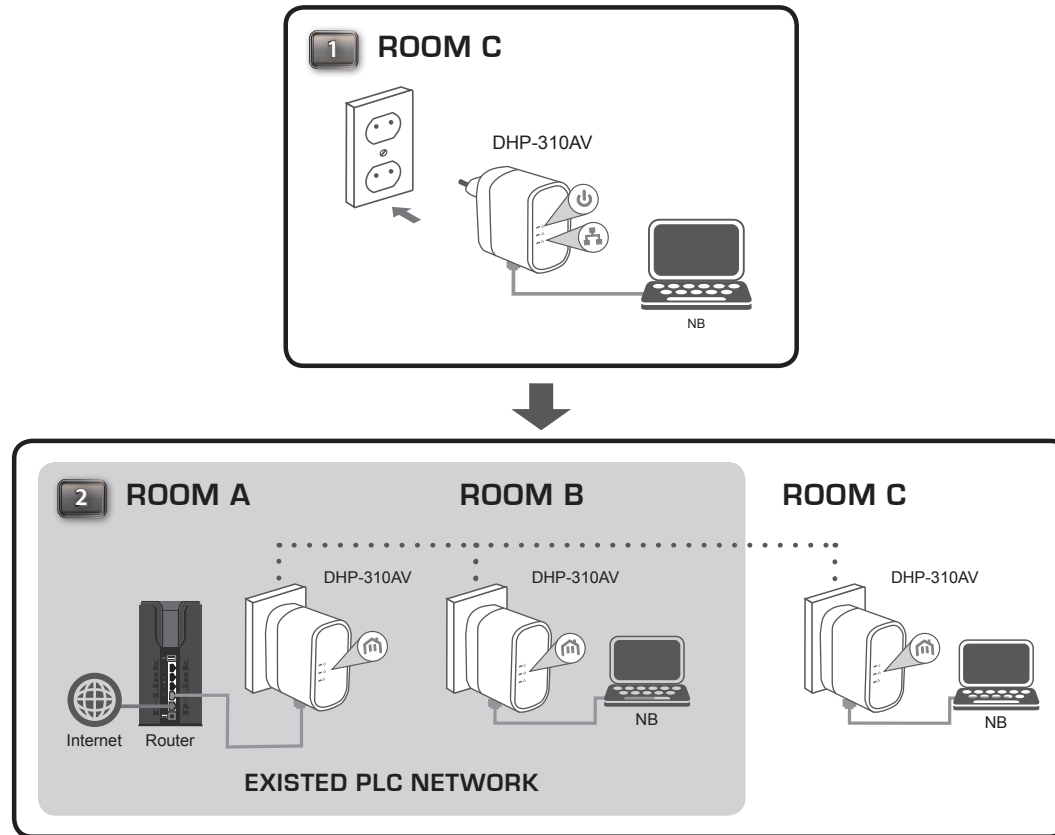
#### **4. Adding More Adapters**

If you would like to add more than two adapters, press the button of the additional adapter for no more than three seconds. The Power LED will start blinking after you release the button.

Then press the button of any adapter in your existing PowerLine network for no more than three seconds. The Power LED will start blinking after you release the button.

Note: Both Simple connect buttons must be pressed within two minutes.

After above network security setup steps, your PowerLine network will be securely configured with the same network encryption key.



# Using the Setup Wizard

Follow the simple steps below to run the Setup Wizard to guide you quickly through the installation process. Insert the D-Link DHP-310AV CD into your CD-ROM drive. If the CD Autorun function does not automatically start on your computer, click Start > Run. In the Run command box type "D:\autorun.exe", where D: represents the drive letter of your CD-ROM. If it does start, proceed to the next screen.

Click on Install Utility to begin.

Note: In order to properly install the PowerLine AV utility, you will first need to install WinPcap.



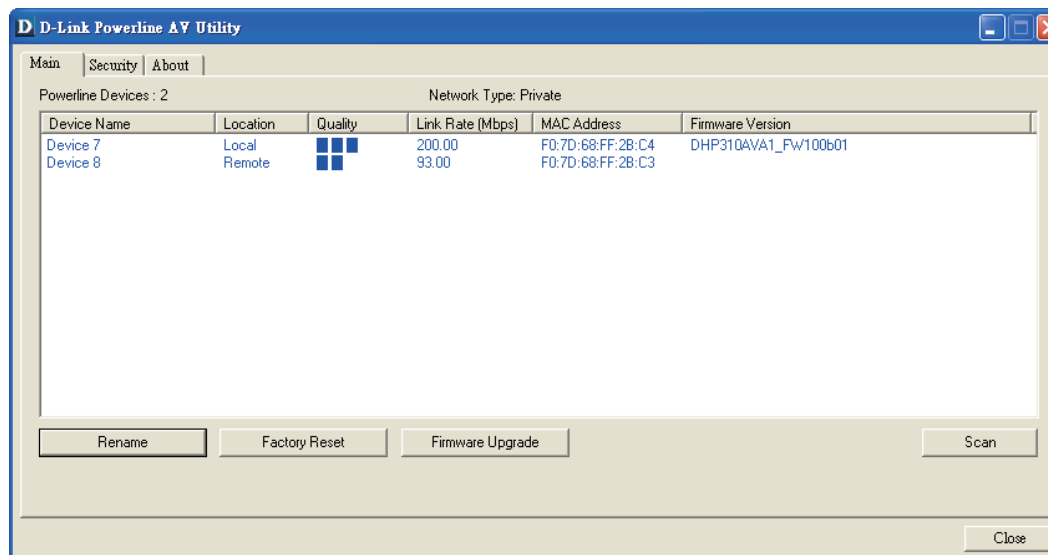
# Configuration

After you have completed the D-Link PowerLine AV Utility installation wizard, double-click the D-Link PowerLine AV Utility icon on your desktop to start the configuration of the DHP-310AV.

Double-click the  
D-Link PowerLine AV  
Utility icon



The D-Link PowerLine AV Utility provides you the option of setting your own PowerLine network and the network information of connected PowerLine devices.



**Device Name:** Shows the name of the devices that have been discovered. The device's name is initially set by the utility itself.

**Location:** Shows if the device is local or remote

**Quality:** Shows the network connection quality of the connected device.

- Three squares - Suitable for HD video stream connection.
- Two squares - Suitable for SD video stream connection.
- One square - Suitable for data and Internet activity connection.

**Link Rate:** Shows the link rate of the connected to the PowerLine device.

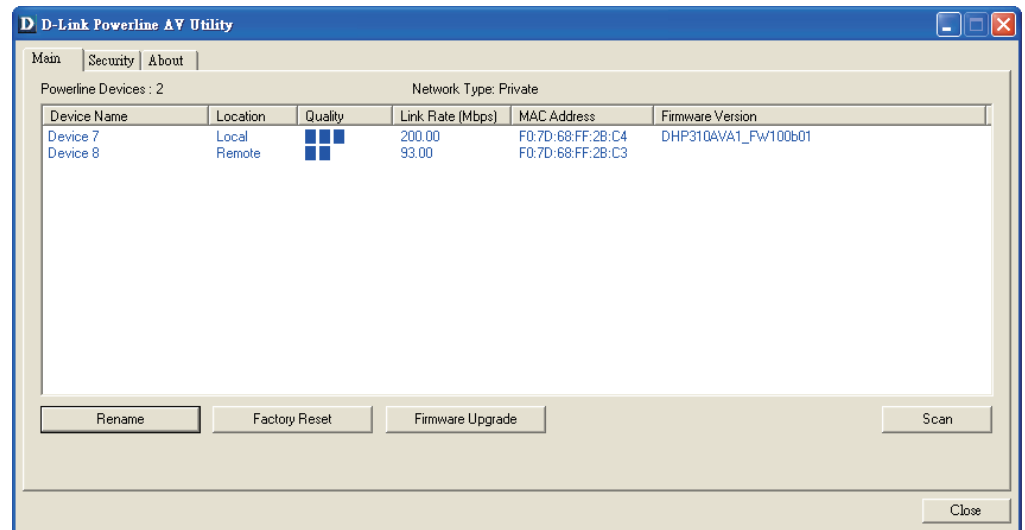
**MAC Address:** Shows the MAC address of the connected PowerLine device.

**Firmware Version:** Shows the firmware version of the connected PowerLine device.

**Factory Reset:** Click Factory Reset to reset the device back to factory default settings.

**Firmware Upgrade:** Click Firmware Upgrade to improve the functionality of your powerLine device.

After you have downloaded the new firmware, click Browse to locate the firmware update on your hard drive. Click OK to proceed to firmware upgrade.



# Security

Understanding the Encryption Key setting:

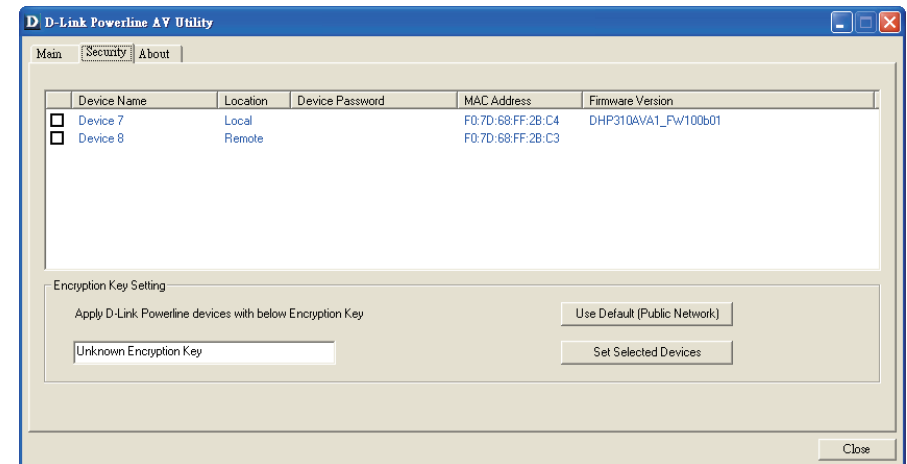
The PowerLine devices on the same network must use an identical encryption key. The default encryption key for each PowerLine device is HomePlugAV. All devices with a default encryption key can communicate with each other. It is recommended to create a private encryption key for network security purpose. The private encryption key allows you to protect your network from unauthorized access via the PowerLine network.

## Setting your private Encryption Key

1. Enter the device's password before changing the encryption key:

- Local Device: You do not need to enter the device's password before changing the encryption key.
- Remote Device: You must enter the device's password before changing the encryption key.

*Note: Each device has a unique device password on the device label.*



2. Select the remote device and then enter the device's password into the Set Device Password window. Then click **OK**.

3. Select the PowerLine devices that you would like to apply the encryption key setting. Then, type your private encryption key into the Encryption Key Setting field and click **Set Selected Devices**. The utility will show a message once the setting has been completed.





### Adding a Device to your PowerLine network

If you use the default encryption key within the existing PowerLine network and the new device retains the default encryption key, you can plug the new device into a power outlet. Then, all devices can communicate with each other.

If the encryption key within the existing PowerLine network has been customized, you have two ways to add the new device to your PowerLine network.

1. You can use the PowerLine AV Utility to apply the customized encryption key in your record to the new device. Then, all devices can communicate with each other by using the customized encryption key.
2. You can use the PowerLine AV Utility to set all devices within the existing PowerLine network and the new device back to the first default encryption key. Then follow the 1 to 3 steps of "Setting your private Encryption Key". Your PowerLine network will securely be configured with a customized encryption key and all of the devices will be able to communicate with each other after your setting.

# PowerLine Installation Considerations

Plan the location of your PowerLine devices:

1. Connect PowerLine devices to electrical outlets that are not controlled by a wall switch to avoid accidentally turning off power to the device.
2. Do not connect the PowerLine devices to an extension cord, surge protector, or power strip as this might prevent it from working correctly, or reduce the network performance.
3. Avoid using the PowerLine devices in an electrical outlet that is located near an appliance that uses a lot of power, such as a washer or dryer, or a refrigerator. This may prevent the adapter from working correctly, or negatively impact network performance.
4. Verify that your PowerLine devices are electrically rated to operate with the power available in your location.
5. To help prevent against electrical shock, be sure to plug the power cables into properly grounded electrical outlets.
6. The PowerLine device is equipped with a three-pronged plug to help ensure proper grounding. Do not use adapter plugs or remove the grounding prong from the cable.



## 7. Important safety instructions

Please read all of the safety and operating instructions before using your device:

1. Do not open the device or attempt to repair or service the device.
2. Only use the included power adapter to power your device.
3. Ensure that the device is plugged into the wall in a vertical position, with the ports facing down.
4. Use the device in a dry location, and avoid placing it in humid environments.
5. Do not submerge the device in liquid or attempt to clean it with liquids or solvents. To clean the device, disconnect it from the power outlet and use a damp towel.
6. Keep the device out of direct sunlight.
7. Do not cover or block the vents on the device.
8. Make sure that the device has adequate room for ventilation.
9. Avoid placing the device near a heater or radiator.
10. The device should be located only where sufficient ventilation can be ensured.
11. The purpose of this product is to create a constant network connection for your devices. If you wish to power down this product, please simply unplug it from the power outlet.

# Troubleshooting

- **PowerLine AV utility does not start correctly:**

Reinstall the utility.

- **PowerLine AV utility does not detect the PowerLine AV Mini Adapter:**

Please make sure your PowerLine AV Mini Adapter is correctly plugged and connected to the computer or network device.

- **I can't configure any parameter of the PowerLine AV Mini Adapter, an error is shown when I try to configure it:**

Please make sure you have not unplugged the PowerLine AV Mini Adapter while configuring it.

- **I changed the connection cable to another Mini Adapter and now the utility does not work correctly:**

Please restart the utility each time you disconnect the connection cable.

- **I'm having a lot of problems configuring my network:**

If you are having problems configuring your network with two or more PowerLine AV Mini Adapters, please make a reset to all of the Mini Adapters and start configuring the adapters again. To test whether the electrical wiring is contributing to the problem, plug the PowerLine adapters in the same room.

# Technical Specifications

## Network Ports

- One 10/100 Ethernet port

## EMC

- FCC Part 15 Class B
- CE Class B
- C-Tick

## AC Input

- 100 ~ 240VAC, 50/60Hz

## Safety

- UL, CE LVD

## Encryption

- 128-bit AES

## Operation Temperature

- 0°C ~ 40°C

## Storage Temperature

- -10°C ~ 70°C

## Humidity

- Operation: 10% ~ 90% RH
- Storage: 5% ~ 90% RH