

# QUICK INSTALL GUIDE

DHP-300

VERSION 1.0



**D-Link**<sup>®</sup>

**POWERLINE HD**

---

# System Requirements

- Windows® XP SP2 or 2000 SP4
- 233MHz processor and at least 64MB of RAM
- An available Ethernet Adapter (100MBit/s)

## Package Contents



DHP-300  
Powerline HD Ethernet Adapter



CD-ROM with Manual and  
Installation Wizard



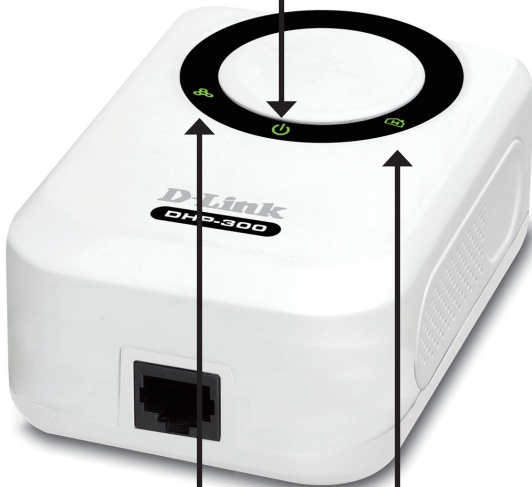
CAT5 Ethernet Cable

*If any of the above items are missing, please contact your reseller.*

# Hardware Overview

## Power LED

A solid light indicates that the device is receiving power.



## Ethernet LED

A solid light indicates a connection on the Ethernet port. The LED blinks during data transmission.

## Powerline LED

A solid light indicates that the device has detected another Powerline device on the network.



**Ethernet**

Connect CAT5 Ethernet cable to the DHP-300 Ethernet port.

# Hardware Installation

## Power

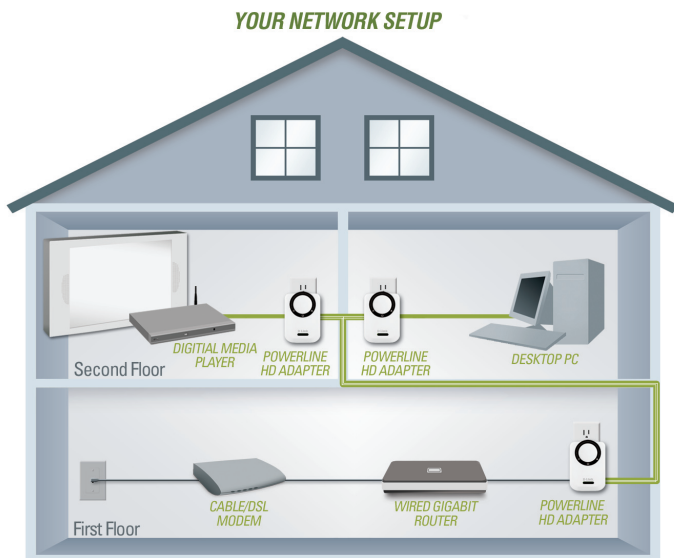
Plug the DHP-300 into an AC wall outlet or power strip.

**Note:** Power source is confirmed when the green LED Power Indicator on the DHP-300 is illuminated.

## Connect the Ethernet Cable

Connect the included Ethernet cable to the network cable connector located on the DHP-300 and attach the other end of the Ethernet cable to the network or PC.

**Note:** Network Connectivity is confirmed when the green Powerline LED indicator on the DHP-300 is illuminated.



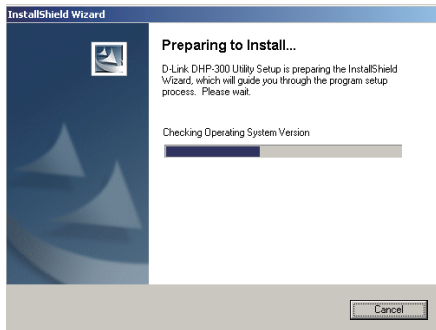
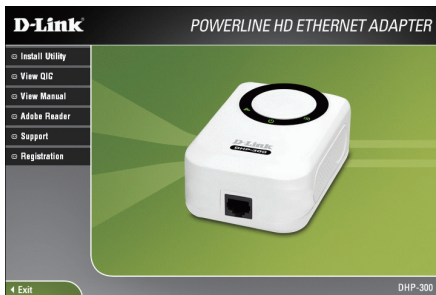
# Software Installation

Follow the simple steps below to run the Setup Wizard to guide you quickly through the installation process.

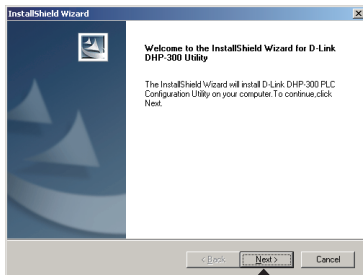
Insert the **D-Link DHP-300 Powerline HD Ethernet Adapter** CD into your CD-ROM drive. If the CD Autorun function does not automatically start on your computer, click Windows® Start > Run.

In the Run command box type “**D:\DHP300.exe**”, where D: represents the drive letter of your CD-ROM. If it does start, proceed to the next screen.

Click on **Install Utility**

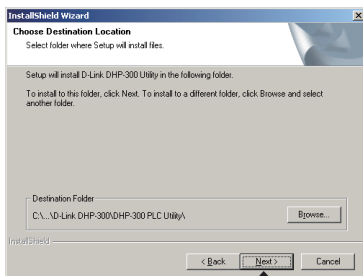


The InstallShield Wizard will begin the DHP-300 software

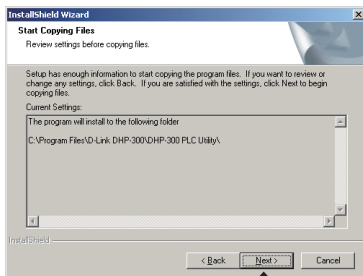


Click **Next**

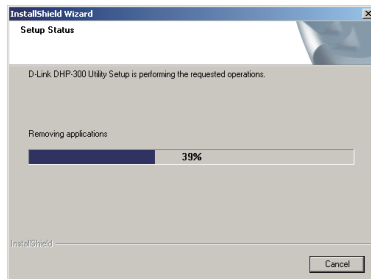
Setup will install to the default location: *C:\Program Files\D-Link DHP-300\DHP-300 PLC Utility*, where C: represents the drive letter of your hard drive. To install to a different location click **Browse** and specify the location.



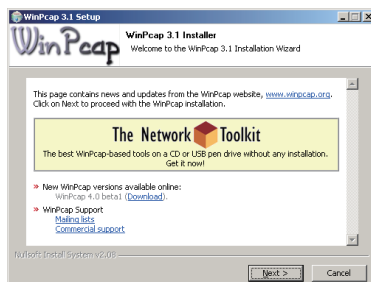
Click **Next**



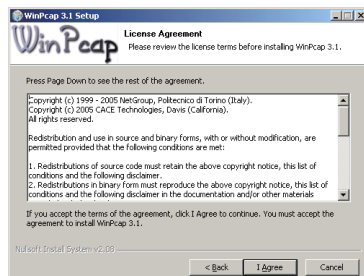
Click **Next**



The WinPcap 3.1 installation is necessary to run the D-Link DHP-300 Utility, click **Next** to continue with the installation.



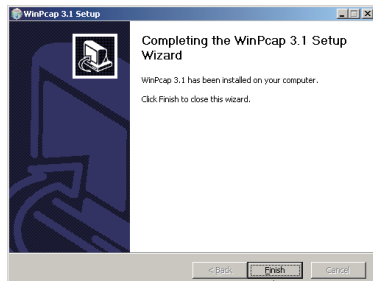
Click **Next**



Click **I Agree**

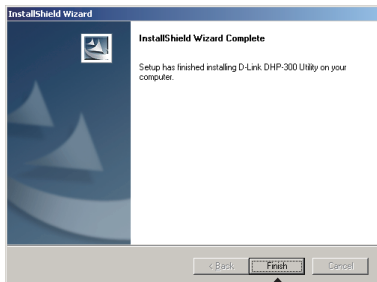


The WinPcap 3.1 Installation is complete. Click **Finish** to close the wizard.



Click **Finish**

The installation wizard is now complete click **Finish**.



Click **Finish**

# Configuration

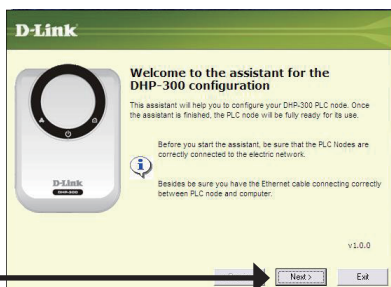
After you have completed the D-Link DHP-300 Utility installation wizard, double-click the D-Link DHP-300 PLC Utility icon on your desktop to start the configuration of the DHP-300.

Double-click the **D-Link DHP-300 PLC Utility**



The utility provides you with the option of setting your own unique Network ID and the ability to prioritize traffic passing through the network.

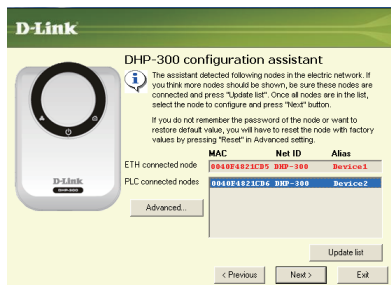
Click **Next**



Configure the PLC connected nodes first (the remote DHP-300 which is not connected to the PC), and configure the ETH connected node last (the local DHP-300 connected to the PC).

**Note:** *If you configure the ETH node first and change the Net ID or Encryption Key, you will not have access the the PLC nodes.*

To configure a DHP-300, select it and click **Next** to continue.



Click **Next**

This screen shows the current configuration of the DHP-300. You can modify any of the parameters and click **Next** to save your configuration.

- **Net ID:**  
Powerline network name.
- **Encryption Key:**  
Powerline network password
- **Password:**  
Configuration Assistant password
- **Alias:**  
Device name

Click **Next**



If you are finished configuring this node you need to configure the rest of the remote nodes before you configure the local node. Click the **Next** button to continue. Once all nodes are configured, click **Finish** to close the utility.

Click **Next**



---

# Technical Support

D-Link's website contains the latest user documentation and software updates for D-Link products.

U.S. and Canadian customers can contact D-Link Technical Support through our website or by phone.

## United States

### Telephone

(877) 453-5465

### World Wide Web

<http://support.dlink.com>

## Canada

### Telephone

(800) 361-5265

### World Wide Web

<http://support.dlink.ca>



Version 1.00

September 13, 2006

2907HP300A16000

Copyright ©2005 D-Link Corporation/D-Link Systems, Inc. All rights reserved. D-Link, and the D-Link logo are registered trademarks of D-Link Corporation or its subsidiaries in the United States and other countries. Other trademarks are the property of their respective owners. Network conditions and environmental factors, including volume of network traffic, building materials and construction, and network overhead lower actual data throughput rate. Product specifications, size and shape are subject to change without notice, and actual product appearance may differ from that depicted on the packaging. Visit [www.dlink.com](http://www.dlink.com) for more details.