

D-Link™ DGE-530T

32-bit Gigabit Network Adapter

Manual

Second Edition (Revised) (October 2003)

6DGE530T..02
Printed in Taiwan



RECYCLABLE



Limited Warranty (USA Only)

Subject to the terms and conditions set forth herein, D-Link Systems, Inc. ("D-Link") provides this Limited warranty for its product only to the person or entity that originally purchased the product from:

- D-Link or its authorized reseller or distributor and
- Products purchased and delivered within the fifty states of the United States, the District of Columbia, U.S. Possessions or Protectorates, U.S. Military Installations, addresses with an APO or FPO.

Limited Warranty: D-Link warrants that the hardware portion of the D-Link products described below will be free from material defects in workmanship and materials from the date of original retail purchase of the product, for the period set forth below applicable to the product type ("Warranty Period"), except as otherwise stated herein.

Limited Lifetime Warranty for the Product(s) is defined as follows:

- Hardware for as long as the original customer/end user owns the product, or five years after product discontinuance, whichever occurs first (excluding power supplies and fans)
- Power Supplies and Fans Three (3) Year
- Spare parts and spare kits Ninety (90) days

D-Link's sole obligation shall be to repair or replace the defective Hardware during the Warranty Period at no charge to the original owner or to refund at D-Link's sole discretion. Such repair or replacement will be rendered by D-Link at an Authorized D-Link Service Office. The replacement Hardware need not be new or have an identical make, model or part. D-Link may in its sole discretion replace the defective Hardware (or any part thereof) with any reconditioned product that D-Link reasonably determines is substantially equivalent (or superior) in all material respects to the defective Hardware. Repaired or replacement Hardware will be warranted for the remainder of the original Warranty Period from the date of original retail purchase. If a material defect is incapable of correction, or if D-Link determines in its sole discretion that it is not practical to repair or replace the defective Hardware, the price paid by the original purchaser for the defective Hardware will be refunded by D-Link upon return to D-Link of the defective Hardware. All Hardware (or part thereof) that is replaced by D-Link, or for which the purchase price is refunded, shall become the property of D-Link upon replacement or refund.

Limited Software Warranty: D-Link warrants that the software portion of the product ("Software") will substantially conform to D-Link's then current functional specifications for the Software, as set forth in the applicable documentation, from the date of original retail purchase of the Software for a period of ninety (90) days ("Warranty Period"), provided that the Software is properly installed on approved hardware and operated as contemplated in its documentation. D-Link further warrants that, during the Warranty Period, the magnetic media on which D-Link delivers the Software will be free of physical defects. D-Link's sole obligation shall be to replace the non-conforming Software (or defective media) with software that substantially conforms to D-Link's functional specifications for the Software or to refund at D-Link's sole discretion. Except as otherwise agreed by D-Link in writing, the replacement Software is provided only to the original licensee, and is subject to the terms and conditions of the license granted by D-Link for the Software. Software will be warranted for the remainder of the original Warranty Period from the date of original retail purchase. If a material non-conformance is incapable of correction, or if D-Link determines in its sole discretion that it is not practical to replace the non-conforming Software, the price paid by the original licensee for the non-conforming Software will be refunded by D-Link; provided that the non-conforming Software (and all copies thereof) is first returned to D-Link. The license granted respecting any Software for which a refund is given automatically terminates.

Non-Applicability of Warranty: The Limited Warranty provided hereunder for hardware and software of D-Link's products will not be applied to and does not cover any refurbished product and any product purchased through the inventory clearance or liquidation sale or other sales in which D-Link, the sellers, or the liquidators expressly disclaim their warranty obligation pertaining to the product and in that case, the product is being sold "As-Is" without any warranty whatsoever including, without limitation, the Limited Warranty as described herein, notwithstanding anything stated herein to the contrary.

Submitting A Claim: The customer shall return the product to the original purchase point based on its return policy. In case the return policy period has expired and the product is within warranty, the customer shall submit a claim to D-Link as outlined below:

- The customer must submit with the product as part of the claim a written description of the Hardware defect or Software nonconformance in sufficient detail to allow D-Link to confirm the same.
- The original product owner must obtain a Return Material Authorization ("RMA") number from the Authorized D-Link Service Office and, if requested, provide written proof of purchase of the product (such as a copy of the dated purchase invoice for the product) before the warranty service is provided.
- After an RMA number is issued, the defective product must be packaged securely in the original or other suitable shipping package to ensure that it will not be damaged in transit, and the RMA number must be prominently marked on the outside of the package. Do not include any manuals or accessories in the shipping package. D-Link will only replace the defective portion of the Product and will not ship back any accessories.
- The customer is responsible for all in-bound shipping charges to D-Link. No Cash on Delivery ("COD") is allowed. Products sent COD will either be rejected by D-Link or become the property of D-Link. Products shall be fully insured by the customer and shipped to **D-Link Systems, Inc., 53 Discovery Drive, Irvine, CA 92618**. D-Link will not be held responsible for any packages that are lost in transit to D-Link. The repaired or replaced packages will be shipped to the customer via UPS Ground or any common carrier selected by D-Link, with shipping charges prepaid. Expedited shipping is available if shipping charges are prepaid by the customer and upon request.

D-Link may reject or return any product that is not packaged and shipped in strict compliance with the foregoing requirements, or for which an RMA number is not visible from the outside of the package. The product owner agrees to pay D-Link's reasonable handling and return shipping charges for any product that is not packaged and shipped in accordance with the foregoing requirements, or that is determined by D-Link not to be defective or non-conforming.

What Is Not Covered: This limited warranty provided by D-Link does not cover: Products, if in D-Link's judgment, have been subjected to abuse, accident, alteration, modification, tampering, negligence, misuse, faulty installation, lack of reasonable care, repair or service in any way that is not contemplated in the documentation for the product, or if the model or serial number has been altered, tampered with, defaced or removed; Initial installation, installation and removal of the product for repair, and shipping costs; Operational adjustments covered in the operating manual for the product, and normal maintenance; Damage that occurs in shipment, due to act of God, failures due to power surge, and cosmetic damage; Any hardware, software, firmware or other products or services provided by anyone other than D-Link; Products that have been purchased from inventory clearance or liquidation sales or other sales in which D-Link, the sellers, or the liquidators expressly disclaim their warranty obligation pertaining to the product. Repair by anyone other than D-Link or an Authorized D-Link Service Office will void this Warranty.

Disclaimer of Other Warranties: EXCEPT FOR THE LIMITED WARRANTY SPECIFIED HEREIN, THE PRODUCT IS PROVIDED "AS-IS" WITHOUT ANY WARRANTY OF ANY KIND WHATSOEVER INCLUDING, WITHOUT LIMITATION, ANY WARRANTY OF MERCHANTABILITY, FITNESS FOR A PARTICULAR PURPOSE AND NON-INFRINGEMENT. IF ANY IMPLIED WARRANTY CANNOT BE DISCLAIMED IN ANY TERRITORY WHERE A PRODUCT IS SOLD, THE DURATION OF SUCH IMPLIED WARRANTY SHALL BE LIMITED TO NINETY (90) DAYS. EXCEPT AS EXPRESSLY COVERED UNDER THE LIMITED WARRANTY PROVIDED HEREIN, THE ENTIRE RISK AS TO THE QUALITY, SELECTION AND PERFORMANCE OF THE PRODUCT IS WITH THE PURCHASER OF THE PRODUCT.

Limitation of Liability: TO THE MAXIMUM EXTENT PERMITTED BY LAW, D-LINK IS NOT LIABLE UNDER ANY CONTRACT, NEGLIGENCE, STRICT LIABILITY OR OTHER LEGAL OR EQUITABLE THEORY FOR ANY LOSS OF USE OF THE PRODUCT, INCONVENIENCE OR DAMAGES OF ANY CHARACTER, WHETHER DIRECT, SPECIAL, INCIDENTAL OR CONSEQUENTIAL (INCLUDING, BUT NOT LIMITED TO, DAMAGES FOR LOSS OF GOODWILL, LOSS OF REVENUE OR PROFIT, WORK STOPPAGE, COMPUTER FAILURE OR MALFUNCTION, FAILURE OF OTHER EQUIPMENT OR COMPUTER PROGRAMS TO WHICH D-LINK'S PRODUCT IS CONNECTED WITH, LOSS OF INFORMATION OR DATA CONTAINED IN, STORED ON, OR INTEGRATED WITH ANY PRODUCT RETURNED TO D-LINK FOR WARRANTY SERVICE) RESULTING FROM THE USE OF THE PRODUCT, RELATING TO WARRANTY SERVICE, OR ARISING OUT OF ANY BREACH OF THIS LIMITED WARRANTY, EVEN IF D-LINK HAS BEEN ADVISED OF THE POSSIBILITY OF SUCH DAMAGES. THE SOLE REMEDY FOR A BREACH OF THE FOREGOING LIMITED WARRANTY IS REPAIR, REPLACEMENT OR REFUND OF THE DEFECTIVE OR NON-CONFORMING PRODUCT. THE MAXIMUM LIABILITY OF D-LINK UNDER THIS WARRANTY IS LIMITED TO THE PURCHASE PRICE OF THE PRODUCT COVERED BY THE WARRANTY. THE FOREGOING EXPRESS WRITTEN WARRANTIES AND REMEDIES ARE EXCLUSIVE AND ARE IN LIEU OF ANY OTHER WARRANTIES OR REMEDIES, EXPRESS, IMPLIED OR STATUTORY

Governing Law: This Limited Warranty shall be governed by the laws of the State of California. Some states do not allow exclusion or limitation of incidental or consequential damages, or limitations on how long an implied warranty lasts, so the foregoing limitations and exclusions may not apply. This limited warranty provides specific legal rights and the product owner may also have other rights which vary from state to state.

Trademarks: D-Link is a registered trademark of D-Link Systems, Inc. Other trademarks or registered trademarks are the property of their respective manufacturers or owners.

Copyright Statement: *No part of this publication or documentation accompanying this Product may be reproduced in any form or by any means or used to make any derivative such as translation, transformation, or adaptation without permission from D-Link Corporation/D-Link Systems, Inc., as stipulated by the United States Copyright Act of 1976. Contents are subject to change without prior notice. Copyright © 2002 by D-Link Corporation/D-Link Systems, Inc. All rights reserved.*

CE Mark Warning: This is a Class B product. In a domestic environment, this product may cause radio interference, in which case the user may be required to take adequate measures.

FCC Statement: This equipment has been tested and found to comply with the limits for a Class B digital device, pursuant to part 15 of the FCC Rules. These limits are designed to provide reasonable protection against harmful interference in a residential installation. This equipment generates, uses, and can radiate radio frequency energy and, if not installed and used in accordance with the instructions, may cause harmful interference to radio communication. However, there is no guarantee that interference will not occur in a particular installation. If this equipment does cause harmful interference to radio or television reception, which can be determined by turning the equipment off and on, the user is encouraged to try to correct the interference by one or more of the following measures:

- Reorient or relocate the receiving antenna.
- Increase the separation between the equipment and receiver.
- Connect the equipment into an outlet on a circuit different from that to which the receiver is connected.
- Consult the dealer or an experienced radio/TV technician for help.

For detailed warranty outside the United States, please contact corresponding local D-Link office.

Register online your D-Link product at <http://support.dlink.com/register/>

Table of Contents

INTRODUCTION	1
System Requirements	1
Features	1
INSTALLATION	3
Unpack and Inspect.....	3
Installing the Adapter.....	3
Connecting the Network Cable	3
Software Installation	4
ADVANCED FEATURES	5
Wake On LAN	5
QoS	5
Jumbo Frames	5
The D-Link Ethernet Adapter Agent.....	6
SNMP	10
D-Link Network Control	10
The Cable Diagnostic Feature.....	10
TROUBLESHOOTING	12
SPECIFICATIONS	13

1

Introduction

Thank you for choosing the D-Link DGE-530T, the value leader among Gigabit adapters for PCI Bus personal computers. This introduction gives a general description of the newer networking technologies found on the DGE-530T.

The DGE-530T provides the bandwidth capability to support high-end servers and workstations. With Auto-negotiation, this card can run on three different speeds: 10Mbps at half and full duplex, 100Mbps at half and full duplex, and 1000Mbps at full duplex. When running at 1000Mbps, it provides a network throughput of 2Gbps in full-duplex mode.

The DGE-530T provides IEEE 802.3x Flow Control Enhancements, which are needed for a network adapter to function with a switch. In full-duplex mode, the MAC implements the PAUSE control function. This means when a switch is connected in full-duplex mode and it senses that its buffer will overflow in the near future, the switch will transmit one standard Ethernet packet that causes the DGE-530T to pause for a period, thus avoiding internal buffer overflow and packet loss.

The NIC enables simple, scalable network migration, providing the benefits of Gigabit Ethernet networking with the familiarity of Ethernet.

System Requirements

Before installing the DGE-530T, check your system for the following minimum configuration requirements.

- One of the following slot types:
 - An open PCI bus master slot, 32-bit or 64-bit, operating at 33 or 66 MHz.
 - An open PCI-X slot operating at 66, 100 or 133 MHz.
- 32 MB of System Memory
- 150 MHz processor, or faster
- The latest BIOS for your computer
- One of the following types of twisted-pair network cabling:
 - 4 – pair Category 5 or better for 1000Mbps
 - Category 5 or better for 1000Mbps
 - Category 3, 5 or better for 10Mbps

Features

Designed for versatility and performance, the DGE-530T Network Adapter provides the following:

- Operability in 32-bit, 33 MHz slot servers and workstations
- Universal Bus support, 3.3V and 5V
- Compliance with IEEE 802.3ab 1000BASE-T Gigabit Ethernet standards, IEEE 802.3u Fast Ethernet standards.
- Plug-and-Play installation

- Supports Wake-on-LAN
- Full-duplex Gigabit Ethernet interface that delivers 2Gbps aggregate bandwidth
- Support for half and full duplex at 10Mbps, half and full-duplex at 100Mbps, and full-duplex operation at 1000Mbps
- Support for full-duplex double network throughput
- Support TCP/IP checksum generation and verification
- Support for SNMP V1
- Support for 802.3x flow control
- Supports 802.1Q VLAN
- Supports 802.1p Priority Tags
- Supports a Cable Diagnostic Feature
- Support for ACPI 2.0
- One built-in RJ-45 connector
- Auto-negotiation to the highest available speed
- Four LED indicators: Link/Activity, Full Duplex, 1000Mbps, 100Mbps.
- Low profile bracket
- PCB size: 124mm x 51mm
- Driver† support for:

√ Microsoft Windows Server 2003

√ Microsoft Windows XP

√ Microsoft Windows NT

√ Microsoft Windows ME

√ Red Hat Linux 7.3 (kernel 2.4.18-3) or later

√ Microsoft Windows 2000

√ Microsoft Windows 98SE

√ Novell Netware 4.2/5.X/6.X/ ODI 1.11



NOTE: The driver for Microsoft Windows Server 2003 will be available in an upcoming release of this product. Currently this driver is not supported.

† Check <http://www.dlink.com> for newest release of drivers.

2

Installation

Unpack and Inspect

CAUTION: *Under ordinary circumstances, a DGE-530T card will not be affected by a static charge that may be received through your body during handling of the unit. In special circumstances, the user may carry an extraordinarily high static charge and it is good practice to reduce the charge by touching a ground before handling the adapter card.*

Open the shipping carton and carefully remove all items. Ensure that the following items are included:

- One DGE-530T Gigabit Ethernet Adapter Card
- DGE-530T Drivers and Manual on CD-ROM

If any of these items are missing or damaged, please contact your local reseller for replacement.

Installing the Adapter

1. Shut down the computer, unplug its power cord, and remove the chassis cover.

(Important: Opening the case of your computer may compromise the warranty of your computer. Consult the computer manufacturer before opening the case to ensure that you adhere to warranty guidelines. In some cases, you may need to have the DGE-530T installed by your computer manufacturer.)

2. Insert the contact edge of the DGE-530T card into the connector of any available PCI Bus Master expansion slot. Press the card firmly into the connector such that the card's contacts are fully seated in the connector.
3. Install the bracket screw that secures the card to the computer chassis.
4. Replace the computer's chassis cover.
5. Reconnect the computer's power cord, and switch computer power on. If the BIOS section of your computer's boot program is Plug-and-Play compliant, then at power-up the BIOS will automatically configure any newly installed DGE-530T adapter.

NOTE: *Due to a fault in some Plug-and-Play BIOS programs, occasionally a newly installed adapter is assigned an Interrupt Number which has already been assigned to another device. In such a case, the conflict of the Interrupt Number will cause faults in the behavior of both devices. Therefore, the user must run the CMOS Setup utility, and manually assign a non-conflicting Interrupt Number.*

Connecting the Network Cable

1000BASE-T Gigabit Ethernet enables operation over the extensive installed base of legacy Category 5 cabling systems and, by default, the Category 5 cabling systems currently being installed.

It provides optimal full-duplex 1000Mb/s Ethernet service over Category 5e links as defined by ANSI/TIA/EIA-568-A-5. Topology rules for 1000BASE-T are the same as those used for 100BASE-T. Category 5 and 5e link lengths are limited to 100 meters.

Software Installation



D-Link
Building Networks for People

GigaExpress Network™
High-Speed Network Adapter
DGE-530T

**Gigabit Ethernet
Adapter**

- View Manual (PDF)
- View SNMP Manual (PDF)
- View Product Profile
- Install Driver
- Install SNMP Agent
- Install Adobe Acrobat

Close

The CD-ROM included with your DGE-530T is designed to make installation of necessary software a painless and trouble-free process. Simply click on the “Install Drivers” button, and an Installation Wizard will guide you through the process, no matter which operating system you’re running. The included Adobe Acrobat Reader, which is needed to read or print out your user manual, will also come in handy for many other applications.

Simply follow the directions in the Wizard, and your DGE-530T will be installed successfully in just a few minutes, allowing you to enjoy the many advantages of joining an Ethernet LAN.

3

Advanced Features

Wake On LAN

This Wake-on-LAN function can wake up the system from the sleeping mode to the fully powered mode over the network immediately and automatically. Once the system is awake, it can be directed to run management utilities. This function increases end-user productivity by avoiding disruptions during working hours.

QoS

The **QoS** function allows the DGE-530T to transmit and receive tagged frames, such as 802.1p priority tagged frames and 802.1Q VLAN tagged frames. In order for QoS to function on the DGE-530T, it must be connected to a switch that supports and is configured for QoS. These priority tagged frames will let real-time programs optimally utilize the network bandwidth. High priority packets will be processed before low priority packets.



NOTE: To implement QoS on the DGE-530T, it must be connected to a switch or other device that supports and is configured for 802.1p QoS.

Jumbo Frames

Jumbo Frames are Ethernet frames that are larger than 1518 bytes. Jumbo frames may be used to reduce server CPU utilization and improve wire efficiency.

By implementing extra data in fewer packets, jumbo frames can increase throughput and decrease CPU utilization. However, additional latency may be introduced.

End-to-end network hardware must support this capability or these packets will be dropped.

Consult your network administrator or switch manual for more information concerning configuring and understanding Jumbo Frames.

- Supported protocols are limited to IP (TCP, UDP).
- Jumbo frames require compatible switch connections that forward jumbo frames. Contact your switch vendor or manual for additional information.
- There is no benefit to configure jumbo frames if standard size Ethernet frames (64 to 1518 bytes) are used.
- Jumbo frames may be simultaneously used with VLANs.



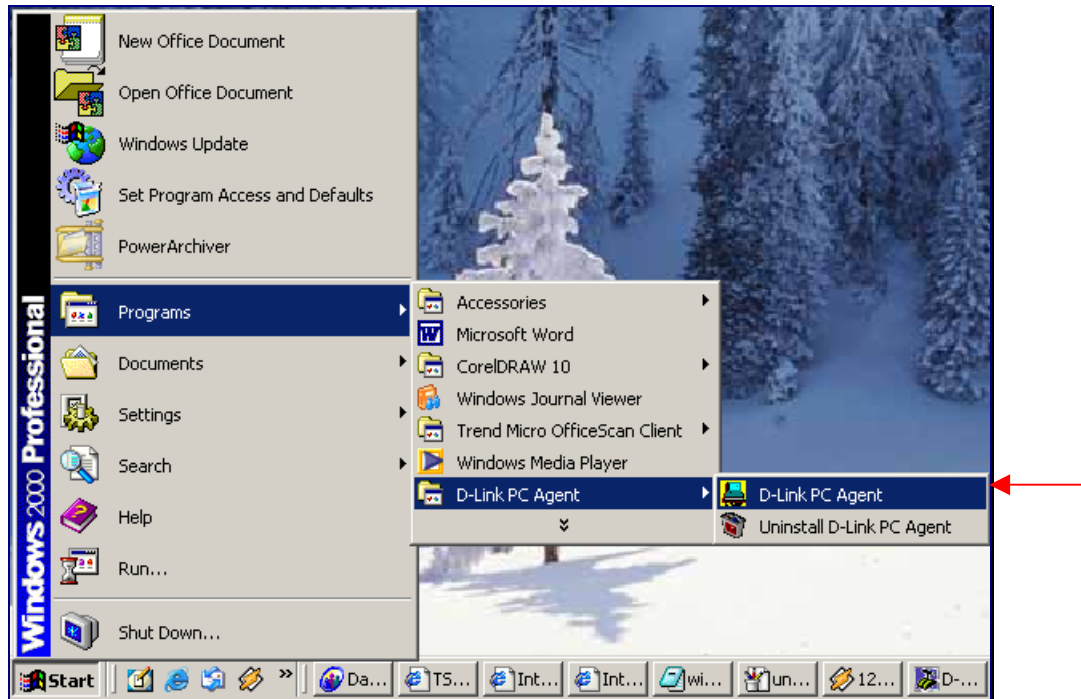
NOTE: Jumbo frames settings on a switch must be set to 8 bytes or larger than the adapter settings for Windows operating systems, and at least 22 bytes larger for all other operating systems.

The D-Link Ethernet Adapter Agent

Included on the installation CD is a program for viewing and configuring the DGE-530T, known as the **D-Link Ethernet Adapter Agent**. This agent will allow the user to view error packets, set passwords and choose NIC card options on your computer. This tool is only for computers running Windows 2000 and Windows XP operating systems. To install the **D-Link Ethernet Adapter Agent**, simply click the **Install Driver** on the Introduction Page, as shown below, and follow the steps of the Installation Wizard.



After successfully installing the **D-Link Ethernet Adapter Agent** and restarting your computer, the function is enabled by clicking **Start >Programs > D-Link PC Agent> D-Link PC Agent**.



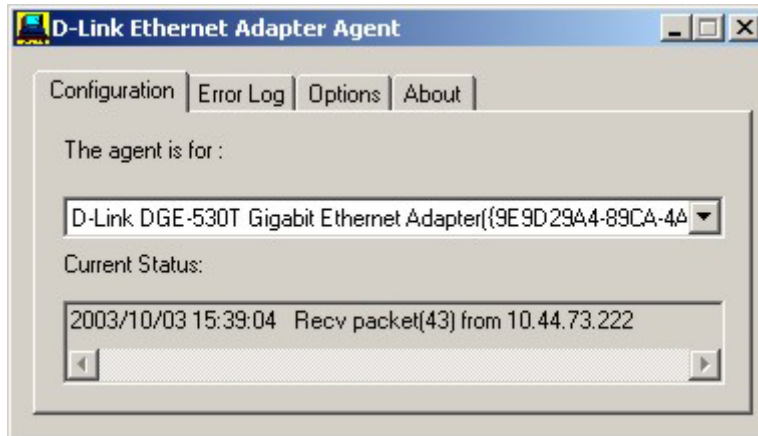
Window will then prompt the user to choose an Ethernet card from a pull down list.



After choosing the **D-Link DGE-530T Gigabit Ethernet Adapter** and clicking **OK**, the user will be prompted with another window to input some personal information. You may input this information now or to set this information later, simply click OK. A brief explanation of this window may also be configured under the Option tab, which will be discussed later in this chapter. After clicking OK, the D-Link Ethernet Adapter icon, shown below, should appear in the bottom right hand tool bar of your computer screen.

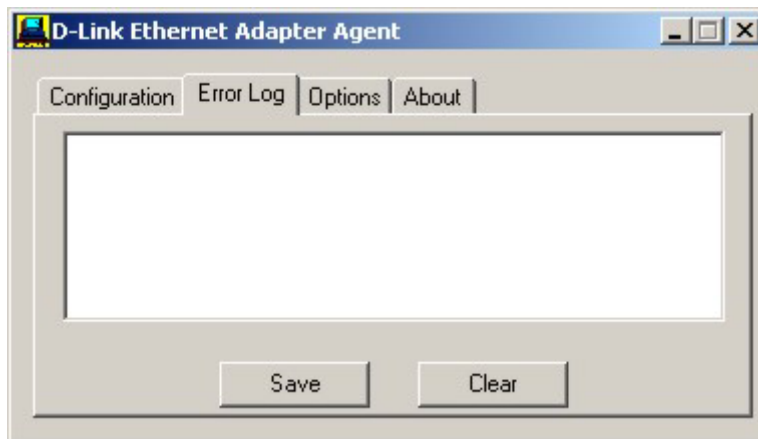


Double clicking the icon will open the Agent window, as shown below.



The Configuration Tab has two fields. The first field, “**The agent is for:**”, allows the user to choose an Ethernet card to configure, from a pull down menu. The “**Current Status**” is a read only field which displays the most recent action made by the Ethernet card.

Clicking the **Error Log** tab will open the following screen. The Error log will display packets received by the DGE-530T, which were discarded due to an error. The user may choose to save these messages or clear them, using the appropriate buttons.



Clicking the Options tab will display the following screen. Here the user may check the “**Auto launch when Windows starts up.**” box to ensure the **D-Link Ethernet Adapter Agent** will automatically start when the Windows operating system commences.



To adjust your personal settings, click the **Personal** button, which will open the following screen.

Personal Setting

Name
An administratively-assigned name for this managed node.

Location
The physical location of this node.
(e.g., 'telephone closet, 3rd floor').

Contact
Information on how to contact you.

OK
Cancel

The user may set the following fields.

- **Name:** A name chosen to identify the user when configuring the DGE-530T.
- **Location:** The user may identify the physical location of the computer where the Ethernet card is installed.
- **Contact:** Information on how to contact the user, such as a telephone number or an e-mail address.

The user may also set a password to protect the configuration settings previously set. Click the Password button under the options tab to open the following screen.

Enter password

Please enter administratively-assigned password :

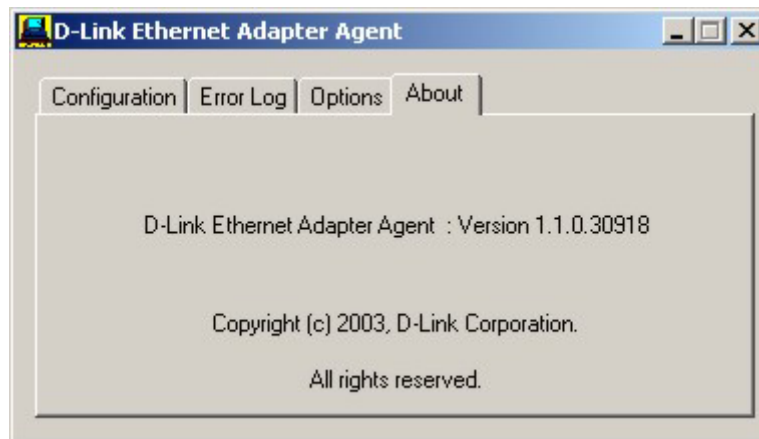
OK
Cancel

Enter a password into the space provided and click **OK** to set your new password. If no password is set by the user, the default password of “private” is used and may need to be entered to configure the **D-Link Ethernet Adapter Agent**.



NOTE: The default password for this utility is “private”.

Clicking the **About** tab will show the current version of the adapter and the copyright information.



SNMP

SNMP is an acronym for Simple Network Management Protocol. This network protocol is used to manage TCP/IP networks by using “Traps” sent from devices compliant with SNMP and collected by one or more servers. Devices that comply with SNMP correspond with management applications by sending alerts and updates, as well as allowing configuration changes.

The DGE-530T’s SNMP agent will take event notices from the adapter, translate and then forward them to specified SNMP management stations.

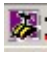
Before installing the SNMP agent, you must install SNMP on your computer. Consult the operating system documentation of your computer for additional information.

To install SNMP on the DGE-530T, simply click Install SNMP Agent on the Introduction Page and complete the steps of the Installation Wizard.

This utility should only be used by experienced network administrators. Additional software or services may need to be previously installed or configured prior to installation of the SNMP protocol.

D-Link Network Control

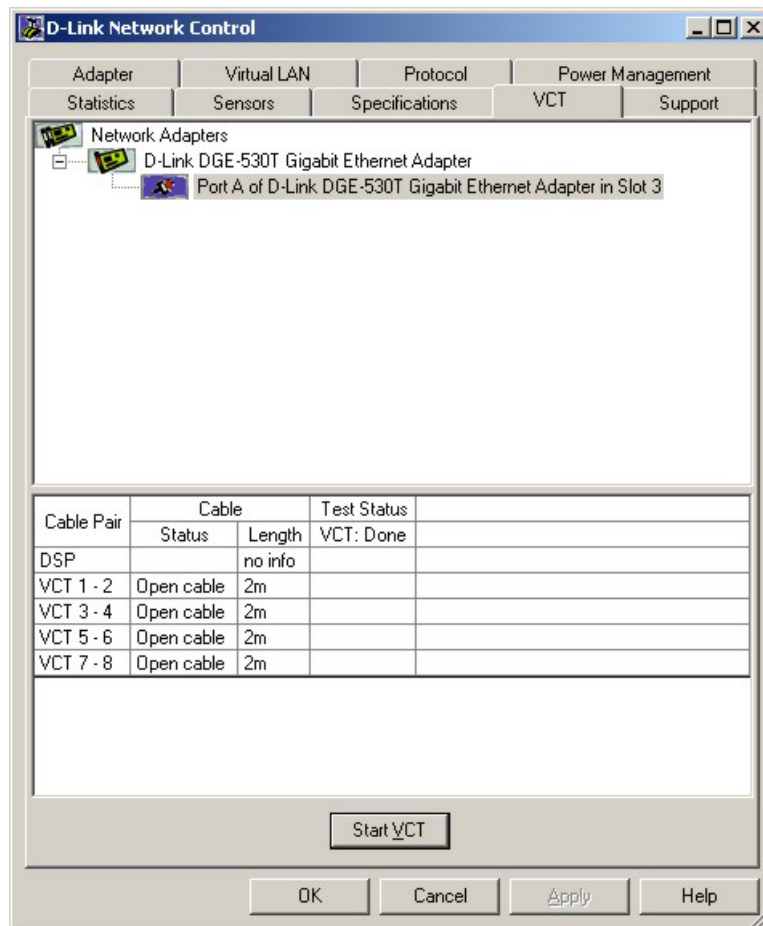
Installed automatically with the driver is the D-Link Network Control program, which may be opened from an icon appearing in the lower right hand taskbar of your browser, and on the

Control Panel of your computer. Double click the icon  to open the program. The configuration and settings information for this program may be found by clicking the **Help** button of the current screen. This should provide you with any information you should need.

The Cable Diagnostic Feature

Within the D-Link Network Control program is a feature for examining the quality and the characteristics of a network cable that has been connected to the DGE-530T. This feature, named the **Virtual Cable Tester (VCT)**, will make it possible for the user to detect and report potential cabling issues such as cable opens, cable shorts and impedance mismatches. The distance of the fault can be reported to within one meter.

To view the VCT window, simply double click the icon for the **D-Link Network Control** and select the VCT folder heading at the top of the window as seen below.



To test the diagnostic, first disconnect the cable from the remote end node so there is just an open cable connected to the DGE-530T. Click the appropriate adapter from the tree view above and then click the **Start VCT** button. The results which will appear in the table below will display the cable pairs, the status of the corresponding cable, the distance to the fault, and the status of the test. If the selected adapter is connected and has an uplink, the **Digital Signal Processor (DSP)** will be activated and will report the speed of the connection (10, 100, 1000Mbps) and the length of the cable.

4

Troubleshooting

If you experience any problems with the adapter, check to see:

- that the appropriate driver is loaded;
- that the proper grade of cable is employed for the network connection;
- that the supporting hub is properly qualified for the application.

The DGE-530T Adapter features four LED indicators:

- **Link/Activity** – Steady green indicates good linkage between the DGE-530T and its supporting server or switch. Flashing green indicates activity (transmitting or receiving) within the adapter.
- **FDX** – Steady green indicates the adapter is operating in full-duplex mode.
- **1000M** – The LED indicator lights green when a 1000 Mbps device is connected to the adapter.
- **100M** – The LED indicator lights green when a 100 Mbps device is connected to the adapter.

5

Specifications

EMC And Safety Certifications:

- FCC Class B
- CE Class B
- BSMI Class B
- C-Tick

Host interface: 32-bit PCI Bus (Bus Master)

I/O base address assigned by Plug and Play system

Interrupt Number Assigned by Plug and Play system

Physical Dimensions: 4.88 inches(L) x 2.17 inches (W) [124mm(L) x 51mm(W)]

Environment:

- Storage: -25° to 55°C (-13° to 131° F)
- Operating: 0° to 40° C (32° to 104° F)
- Humidity: 5% to 90% non-condensing
- Power Consumption: 5W

D-Link® Offices

- Australia** **D-Link Australia**
1 Giffnock Avenue, North Ryde, NSW 2113,
Sydney, Australia
TEL: 61-2-8899-1800 FAX: 61-2-8899-1868
TOLL FREE (Australia): 1800-177100
URL: www.dlink.com.au
E-MAIL: support@dlink.com.au & info@dlink.com.au
- Brazil** **D-Link Brasil Ltda.**
Edifício Manoel Tabacow Hydal,
Rua Tavares Cabral 102 Sala 31, 05423-030
Pinheiros, Sao Paulo, Brasil
TEL: (55 11) 3094 2910 to 2920 FAX: (55 11) 3094 2921
E-MAIL: efreitas@dlink.cl
- Canada** **D-Link Canada**
2180 Winston Park Drive, Oakville,
Ontario, L6H 5W1 Canada
TEL: 1-905-829-5033 FAX: 1-905-829-5095
TOLL FREE: 1-800-354-6522 URL: www.dlink.ca
FTP: [ftp.dlinknet.com](ftp://ftp.dlinknet.com) E-MAIL: techsup@dlink.ca
- Chile** **D-Link South America (Sudamérica)**
Isidora Goyenechea 2934 Of. 702, Las Condes Fono,
2323185, Santiago, Chile, S. A.
TEL: 56-2-232-3185 FAX: 56-2-232-0923
URL: www.dlink.cl
E-MAIL: ccasassu@dlink.cl & tsilva@dlink.cl
- China** **D-Link China**
15th Floor, Science & Technology Tower,
No.11, Baishiqiao Road, Haidan District, 100081 Beijing, China
TEL: 86-10-68467106 FAX: 86-10-68467110
URL: www.dlink.com.cn
E-MAIL: liweii@digitalchina.com.cn
- Denmark** **D-Link Denmark**
Naverland Denmark, Naverland 2, DK-2600 Glostrup, Copenhagen, Denmark
TEL: 45-43-969040 FAX:45-43-424347
URL: www.dlink.dk E-MAIL: info@dlink.dk
- Egypt** **D-Link Middle East**
7 Assem Ebn Sabet Street, Heliopolis, Cairo, Egypt
TEL: 202-245-6176 FAX: 202-245-6192
URL: www.dlink-me.com
E-MAIL: support@dlink-me.com & fateen@dlink-me.com
- Finland** **D-Link Finland**
Pakkalankuja 7A, FIN-0150 Vantaa, Finland
TEL: 358-9-2707-5080 FAX: 358-9-2707-5081
URL: www.dlink-fi.com
- France** **D-Link France**
Le Florilege, No. 2, Allée de la Fresnerie,
78330 Fontenay-le-Fleury, France
TEL: 33-1-3023-8688 FAX: 33-1-3023-8689
URL: www.dlink-france.fr
E-MAIL: info@dlink-france.fr
- Germany** **D-Link Central Europe (D-Link Deutschland GmbH)**
Schwalbacher Strasse 74, D-65760 Eschborn, Germany
TEL: 49-6196-77990 FAX: 49-6196-7799300
URL: www.dlink.de
BBS: 49-(0) 6192-971199 (analog)
BBS: 49-(0) 6192-971198 (ISDN)
INFO: 00800-7250-0000 (toll free)
HELP: 00800-7250-4000 (toll free)

REPAIR: 00800-7250-8000 E-MAIL: info@dlink.de

- India** **D-Link India**
Plot No.5, Bandra-Kurla Complex Rd., Off Cst Rd.,
Santacruz (East), Mumbai, 400 098 India
TEL: 91-022-652-6696/6578/6623
FAX: 91-022-652-8914/8476
URL: www.dlink-india.com & www.dlink.co.in
E-MAIL: service@dlink.india.com & tushars@dlink-india.com
- Italy** **D-Link Mediterraneo Srl/D-Link Italia**
Via Nino Bonnet n. 6/B, 20154, Milano, Italy
TEL: 39-02-2900-0676 FAX: 39-02-2900-1723
URL: www.dlink.it E-MAIL: info@dlink.it
- Japan** **D-Link Japan**
10F, 8-8-15 Nishi-Gotanda, Shinagawa-ku, Tokyo 141, Japan
TEL: 81-3-5434-9678 FAX: 81-3-5434-9868
URL: www.d-link.co.jp E-MAIL: kida@d-link.co.jp
- Netherlands** **D-Link Benelux**
Fellenoord 130 5611 ZB, Eindhoven, The Netherlands
TEL: 31-40-2668713 FAX: 31-40-2668666
URL: www.d-link-benelux.nl & www.dlink-benelux.be
E-MAIL: info@dlink-benelux.nl & info@dlink-benelux.be
- Norway** **D-Link Norway**
Waldemar Thranesgate 77, 0175 Oslo, Norway
TEL: 47-22-99-18-90 FAX: 47-22-20-70-39 SUPPORT: 800-10-610
URL: www.dlink.no
- Russia** **D-Link Russia**
Michurinski Prospekt 49, 117607 Moscow, Russia
TEL: 7-095-737-3389 & 7-095-737-3492
FAX: 7-095-737-3390 URL: www.dlink.ru
E-MAIL: vl@dlink.ru
- Singapore** **D-Link International**
1 International Business Park, #03-12 The Synergy,
Singapore 609917
TEL: 6-6774-6233 FAX: 6-6774-6322
E-MAIL: info@dlink.com.sg URL: www.dlink-intl.com
- South Africa** **D-Link South Africa**
Unit 2, Parkside, 86 Oak Avenue, Highveld Technopark,
Centurion, Gauteng, South Africa
TEL: 27-12-665-2165 FAX: 27-12-665-2186
URL: www.d-link.co.za E-MAIL: attie@d-link.co.za
- Spain** **D-Link Iberia (Spain and Portugal)**
Sabino de Arana, 56 bajos, 08028 Barcelona, Spain
TEL: 34 93 409 0770 FAX: 34 93 491 0795
URL: www.dlink.es E-MAIL: info@dlink.es
- Sweden** **D-Link Sweden**
P. O. Box 15036, S-167 15 Bromma, Sweden
TEL: 46-8-564-61900 FAX: 46-8-564-61901
URL: www.dlink.se E-MAIL: info@dlink.se
- Taiwan** **D-Link Taiwan**
2F, No. 119 Pao-chung Road, Hsin-tien, Taipei, Taiwan
TEL: 886-2-2910-2626 FAX: 886-2-2910-1515
URL: www.dlinktw.com.tw E-MAIL: dssqa@tsc.dlinktw.com.tw
- Turkey** **D-Link Middle East**
Deniz Bilgisayar, Buyukdere Cad. Naci Kasim Sk., No. 5
Mecidiyekoy, Istanbul, Turkey
TEL: 90-212-213-3400 FAX: 90-212-213-3420
E-MAIL: smorovati@dlink-me.com
- U.A.E.** **D-Link Middle East**
CHS Aptec (Dubai), P.O. Box 33550 Dubai, United Arab Emirates

TEL: 971-4-366-885 FAX: 971-4-355-941
E-MAIL: Wxavier@dlink-me.com

U.K.

D-Link Europe (United Kingdom) Ltd

4th Floor, Merit House, Edgware Road, Colindale, London
NW9 5AB United Kingdom

TEL: 44-020-8731-5555 SALES: 44-020-8731-5550

FAX: 44-020-8731-5511 SALES: 44-020-8731-5551

BBS: 44 (0) 181-235-5511

URL: www.dlink.co.uk E-MAIL: info@dlink.co.uk

U.S.A.

D-Link U.S.A.

53 Discovery Drive, Irvine, CA 92618, USA

TEL: 1-949-788-0805 FAX: 1-949-753-7033

INFO: 1-800-326-1688 URL: www.dlink.com

E-MAIL: tech@dlink.com & support@dlink.com