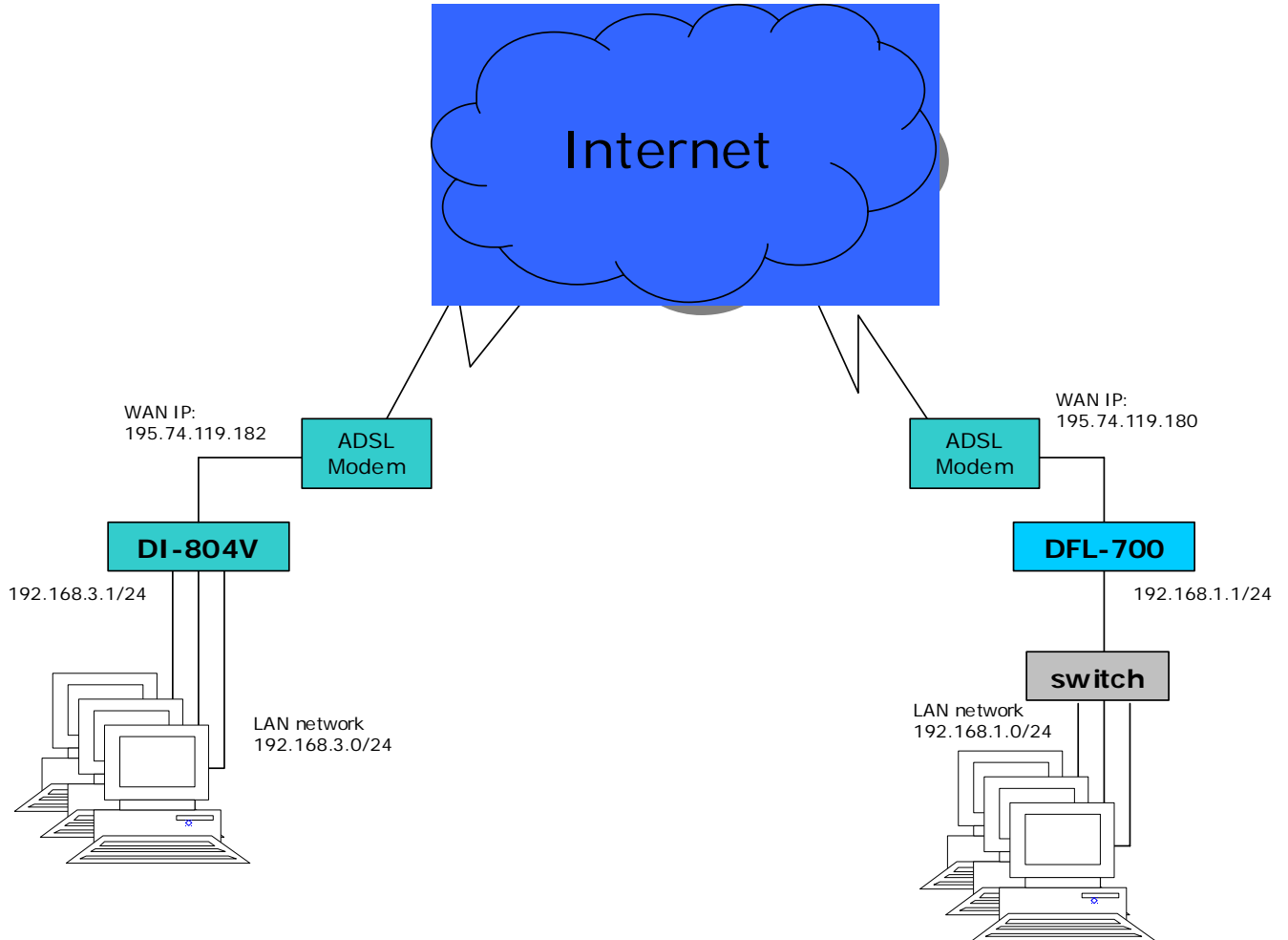


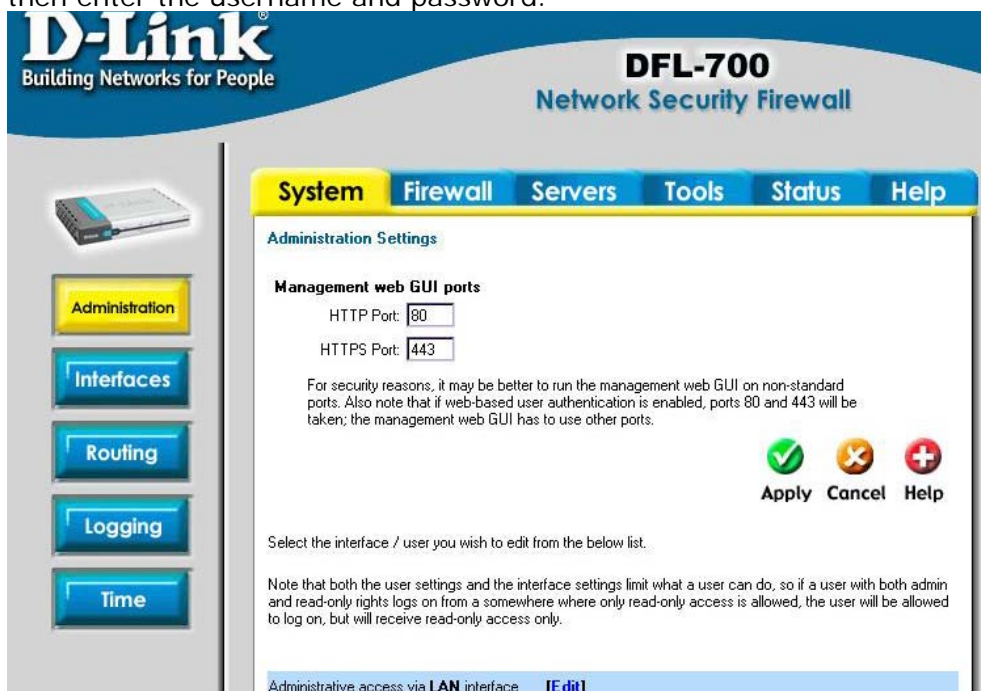
DFL-700 with DI-804V IPsec VPN Configuration Guide

This configuration shows how to connect a DFL-700 to a DI-804V with an IPsec tunnel. Please check the D-Link UK FTP Site at <ftp://ftp.dlink.co.uk> for updates on the firmware.

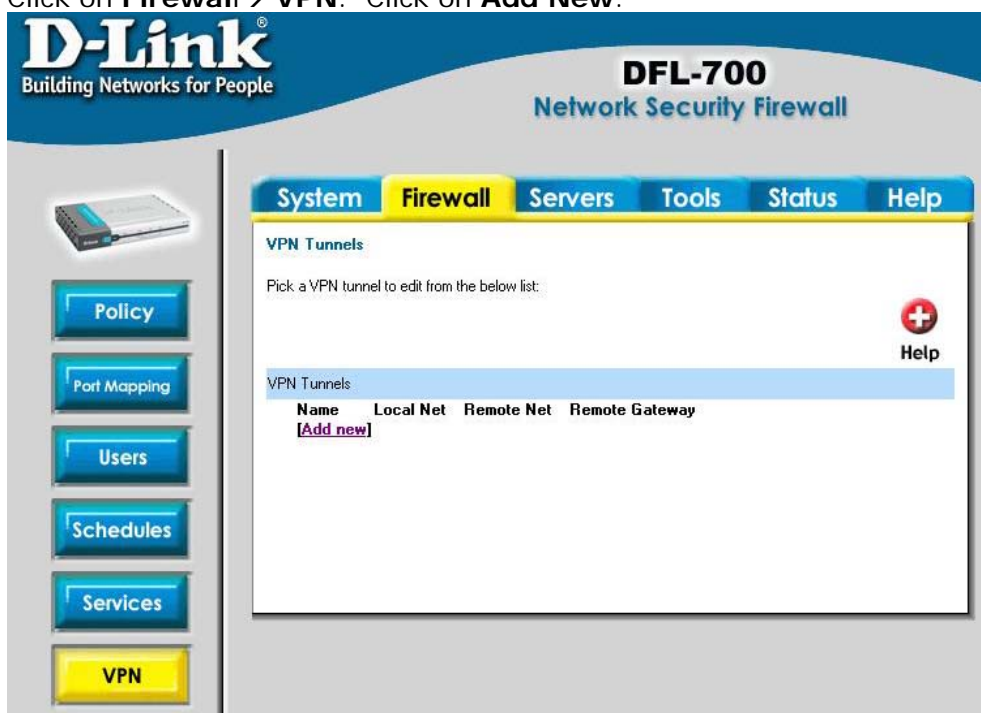


DFL-700 configuration

- 1) Log into the DFL-700 using its IP address (https://192.168.1.1 in this example) and then enter the username and password.



- 2) Click on **Firewall** → **VPN**. Click on **Add New**.



- 3) Enter the details for the Tunnel.

Name: DI-804V
Local Net: 192.168.1.0/24
Authentication: PSK – Pre-Shared Key
Pre-shared key: dlinktest
LAN-to-LAN tunnel

Remote Net: 192.168.3.0/24
 Remote Gateway: 195.74.119.182

VPN Tunnels

Add VPN tunnel:

Name:

Local Net:

Authentication:

☒ **PSK - Pre-Shared Key**

PSK:

Retype PSK:

☐ **Certificate-based**

Local Identity:

Certificates:

Use ctrl/shift click to select multiple certificates.
To use ID lists below, you must select a CA certificate.

Identity List:

Tunnel type:

☐ **Roaming Users** - single-host VPN clients

IKE XAuth: ☐ Require user authentication via IKE XAuth to open tunnel

☒ **LAN-to-LAN tunnel**

Remote Net:

Remote Gateway:

The gateway can be a numerical IP address, DNS name, or range of IP addresses for roaming / NATed gateways.

Proxy ARP: ☐ Publish remote network on all interfaces via Proxy ARP

Click on **Apply** when done.

- 4) Click on **Edit** on the newly created **DI-804V** profile

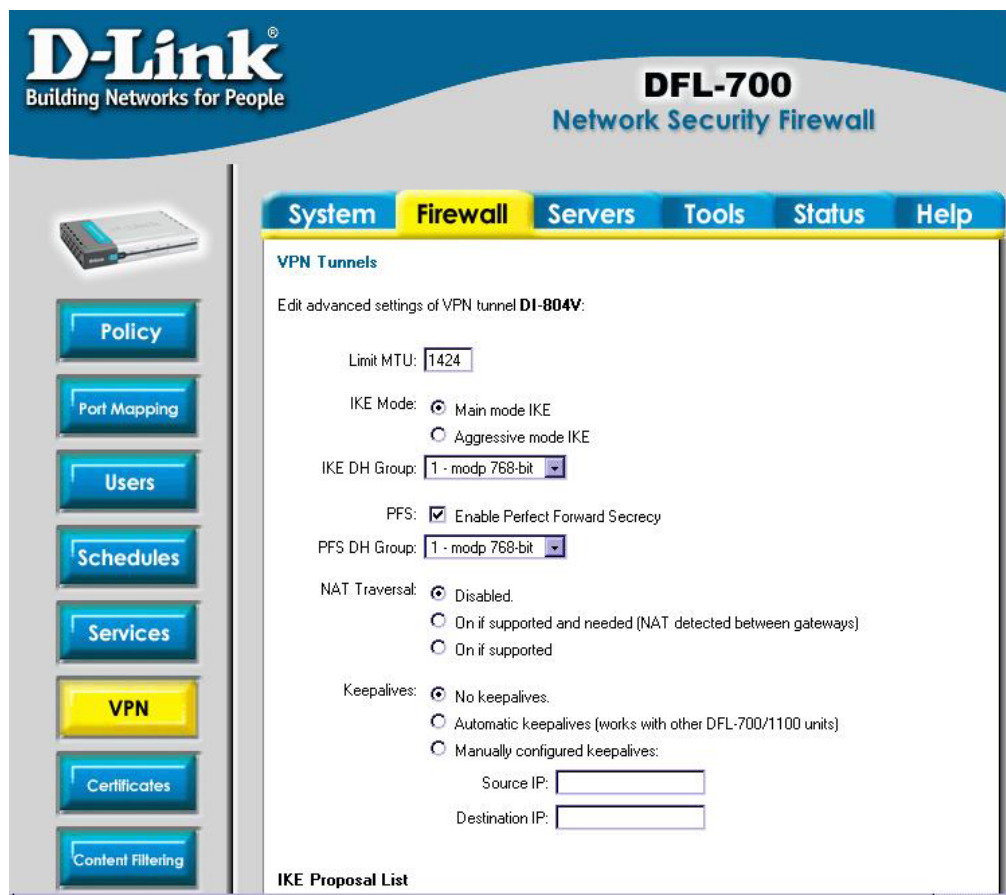
Changes to VPN tunnel DI-804V saved

Pick a VPN tunnel to edit from the below list:

Name	Local Net	Remote Net	Remote Gateway
DI-804V	192.168.1.0/24	192.168.3.0/24	195.74.119.182

[\[Add new\]](#) [\[Edit\]](#)

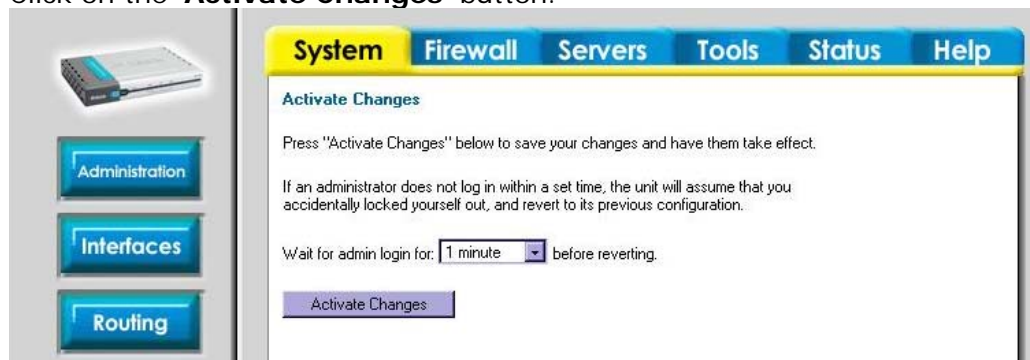
- 5) Click on **Advanced**. Set IKE mode to 'Main Mode' (default), IKE DH Group '1 – modp 768-bit'. Enable PFS by checking it. Set the PFS DH Group to '1 – modp 768-bit'. Set NAT traversal to 'Disabled'. Click on **Apply** when done.



- 6) Click on '**Activate**' on the bottom left hand corner of the screen.

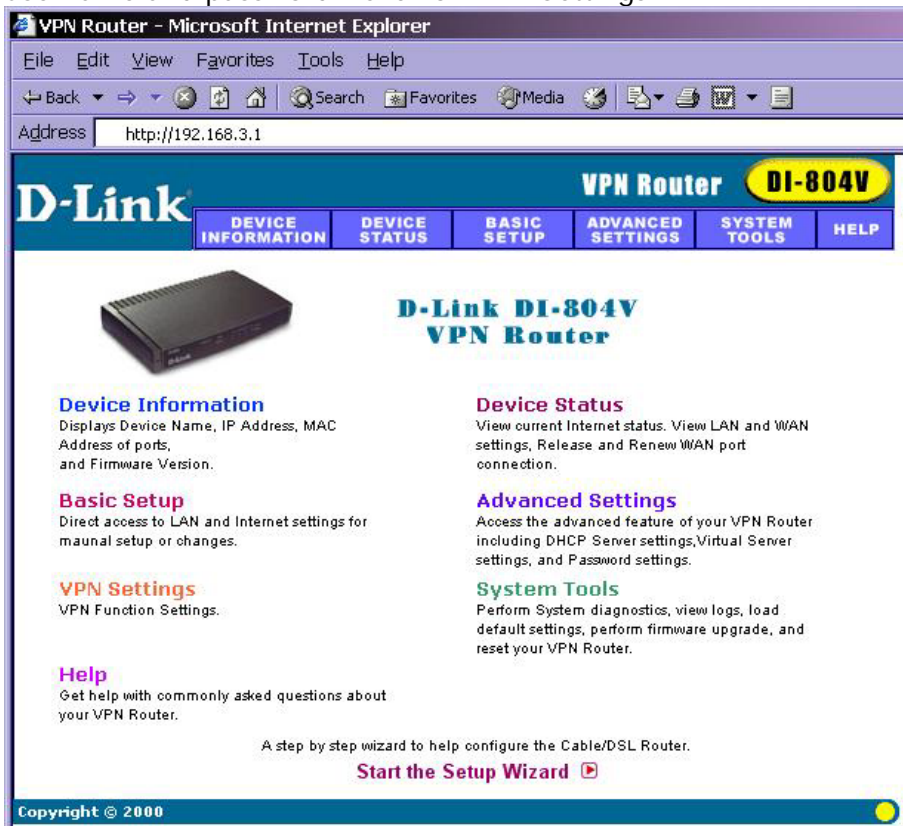


- 7) Click on the '**Activate Changes**' button.

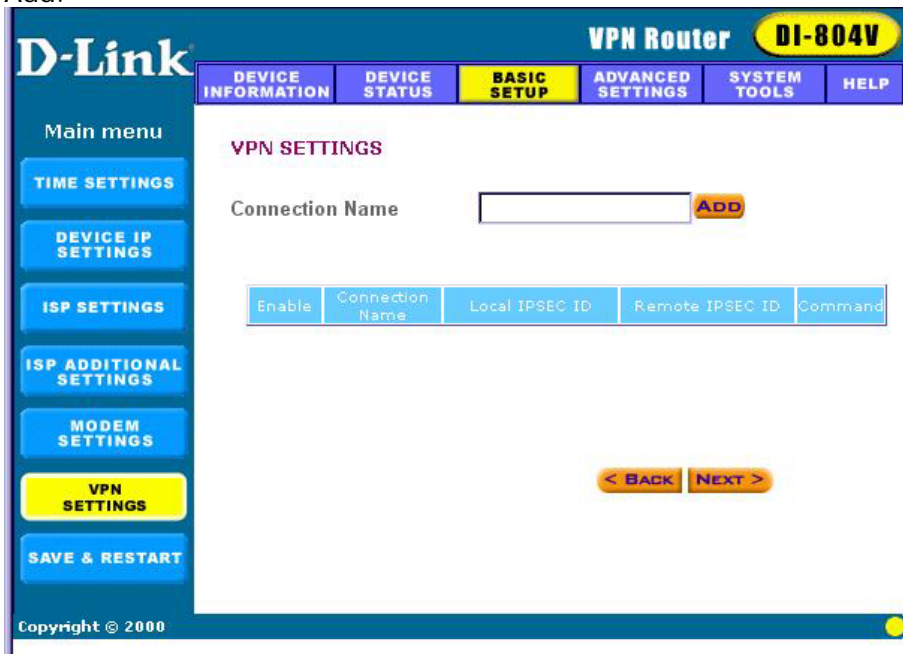


DI-804V configuration

- 1) Log on to the DI-804V using its IP address (<http://192.168.3.1>) and enter the username and password. Click on VPN Settings.



- 2) Under Connection Name, enter the name for the VPN tunnel (i.e. DFL-700). Click on Add.



- 3) Enter the following details. Click on **Save** when done.

Remote IP Network: 192.168.1.0

Remote IP Netmask: 255.255.255.0
 Remote Gateway IP: 195.74.119.180
 Network Interface: WAN ETHERNET

Secure Association: Main Mode
 Perfect Forward Secure: Enabled
 Encryption Protocol: 3DES
 Preshared Key: dlinktest
 Key Life: 3600
 IKE Life Time: 28800

D-Link VPN Router DI-804V

DEVICE INFORMATION | DEVICE STATUS | **BASIC SETUP** | ADVANCED SETTINGS | SYSTEM TOOLS | HELP

Main menu
 TIME SETTINGS
 DEVICE IP SETTINGS
 ISP SETTINGS
 ISP ADDITIONAL SETTINGS
 MODEM SETTINGS
VPN SETTINGS
 SAVE & RESTART

VPN SETTINGS

Connection Name:

☐ Enable UID (Unique Identifier String) ☒ Disable UID

Local IPSEC Identifier:

Remote IPSEC Identifier:

Remote IP Network:

Remote IP Netmask:

Remote Gateway IP:

Network Interface:

☐ Enabled NetBIOS Broadcast

Secure Association: ☒ Main Mode ☐ Aggressive ☐ Manual

Perfect Forward Secure: ☒ Enabled ☐ Disabled

Encryption Protocol:

PreShared Key:

Key Life: Seconds

IKE Life Time: Seconds **SAVE**

Enable	Connection Name	Local IPSEC ID	Remote IPSEC ID	Command
<input type="checkbox"/>				

< BACK NEXT >

NOTE: Local IPSEC Identifier and Remote IPSEC Identifier are disabled for entering when Disable UID is checked.

Copyright © 2000

- 4) Click **Next**. Click **Save and Restart**.

D-Link VPN Router DI-804V

DEVICE INFORMATION | DEVICE STATUS | **BASIC SETUP** | ADVANCED SETTINGS | SYSTEM TOOLS | HELP

Main menu
 TIME SETTINGS
 DEVICE IP SETTINGS
 ISP SETTINGS
 ISP ADDITIONAL SETTINGS
 MODEM SETTINGS
VPN SETTINGS
 SAVE & RESTART

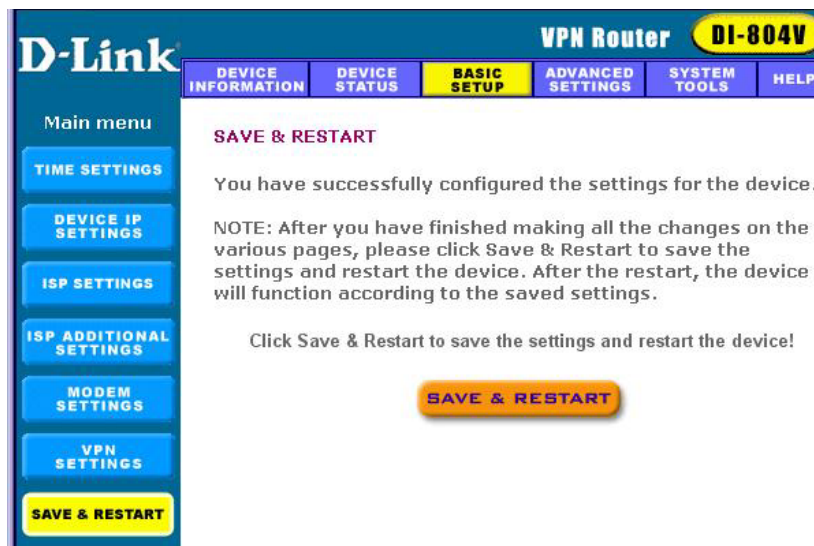
VPN SETTINGS

Connection Name: **ADD**

Enable	Connection Name	Local IPSEC ID	Remote IPSEC ID	Command
<input checked="" type="checkbox"/>	dfl-700			<input type="button" value="Edit"/> <input type="button" value="Del"/>

< BACK NEXT >

Copyright © 2000



Testing the connection

From the DFL-700 side, you can initiate a ping to a machine on the LAN side of the DI-804V (i.e. 192.168.3.10, etc). The tunnel should then be generated and then you should get a response as shown below.

