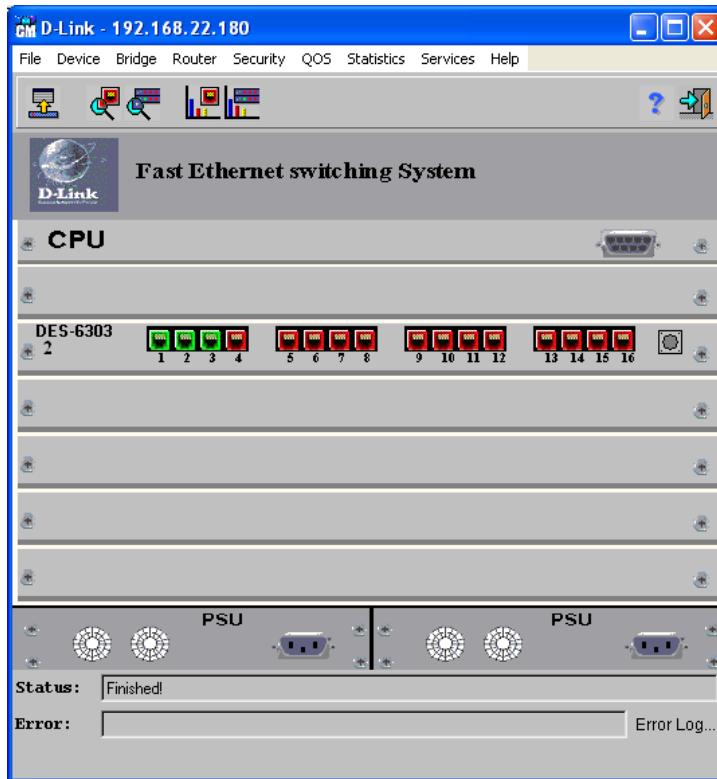


Installation and Configuration of ConfigMaster

1. Download latest release of ConfigMaster
DES-6300_sw_revALL_configmaster_8426_ALL_en_040219.zip
and msjava **DES-6300_sw_revALL_msjava86_ALL_en_050405.zip**
from ftp://ftp.dlink.de/des/des-6300/driver_software
Unzip all files to directory C:/<Name of Directory>/Nms/Configuration/
2. Click on the **Des6300CM8426Sep152003.part1** to install ConfigMaster
3. MSJava install
4. Click on the Ms_install.bat to install ConfigMaster
5. Vendorkeys: gsLda2l0qdtCLhYIAZCe
6. Upon installation of ConfigMaster, launch the application



7. Verify device settings as shown above and click connect to manage the switch



8. Firmware Version using ConfigMaster. Go to **File** -> Device -> Global Parameters -> Version

