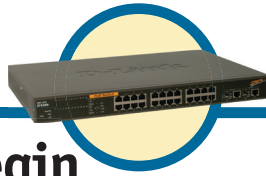


D-Link[®] Quick Installation Guide

DES-1526

26-Port Web Smart Switch with 24
10/100M 802.3af PoE Ports & 2 Combo
10/100/1000Mbps/Mini GBIC Ports



Before You Begin

This Quick Installation Guide gives step-by-step instructions for setting up the D-Link DES-1526 PoE Web-Smart Switch. The model you have purchased may appear slightly different from those shown in the illustrations. For more detailed information about the switch, its components, making network connections and technical specifications, please refer to the User's Manual on master CD included with your switch.

Check Your Package Contents



**DES-1526 26-Port Web Smart Switch with
24 10/100M 802.3af PoE Ports & 2 Combo
10/100/1000Mbps/Mini GBIC Ports**



CD-ROM with Manual/QIG and Utility



Rubber Foot Pads



Rackmount Kit



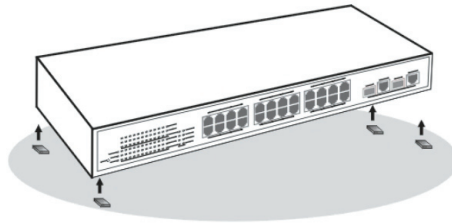
Power Cord

1

Setup DES-1526 Web Smart Switch

The setup of the Switch can be performed using the following steps:

- A. Install DES-1526 in a fairly cool and dry place. See Technical Specifications for the acceptable temperature and humidity operating ranges.
- B. Install the Switch in a site free from strong electromagnetic field generators (such as motors), vibration, dust, and direct exposure to sunlight
- C. Leave at least 10cm (4 in.) of space at the front and rear of the Switch for ventilation.
- D. Install the Switch on a sturdy, level surface that can support its weight, or in an EIA standard-size equipment rack. For information on rack installation, see the next section, titled Rack Mounting.
- E. When installing the Switch on a level surface, attach the rubber feet to the bottom of each device. The rubber feet cushion the Switch and protect the Switch case from scratching.

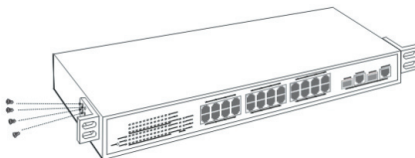


Installed on a Desktop

2

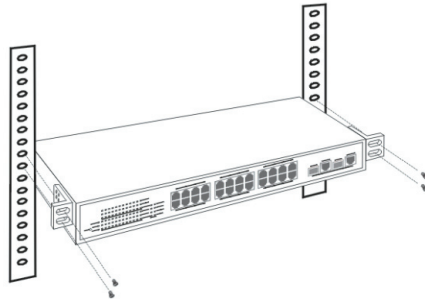
Rack Mounting

The Switch can be mounted in an EIA standard-size, 19-inch rack, which can be placed in a wiring closet with other equipment. Attach the mounting brackets at the Switch's front panel (one on each side), and secure them with the provided screws.



Combine the Switch with the provided screws.

Then, use screws provided with the equipment rack to mount each switch in the rack.



Mount the Switch in the rack.

3 Connect The DES-1526 Web Smart Switch To Your Network

Connecting Network Cables

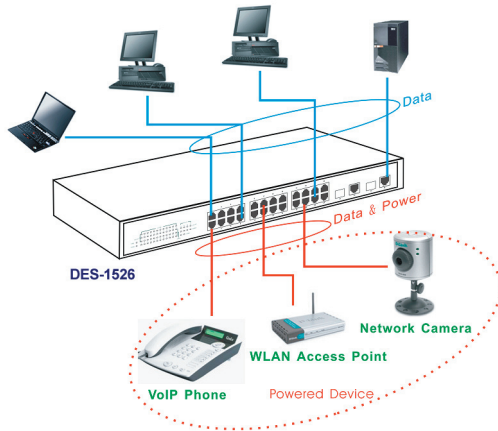
The Switch supports 24 10/100BASE-TX Fast Ethernet PoE enabled ports and 2 1000BASE-T/mini-GBIC combo ports. These 24 PoE ports will be automatically activated when a compatible terminal is identified. The Switch will supply power through the PoE port to the connected PD.

For Legacy devices that are not yet compatible, the PoE port will not offer the power to these devices. This feature allows users to freely and safely mix legacy and Power over Ethernet compatible devices on their network.

The Switch supports 10Mbps Ethernet or 100Mbps Fast Ethernet and it runs both in half- and full- duplex mode using two pairs of Category 5 cables.

The Switch also supports 2 1000BASE-T/mini-GBIC combo Gigabit Ethernet ports. When using the RJ-45 ports, it runs in Auto-negotiation mode with 10/100Mbps that runs in both half- and full-duplex mode and 1000Mbps that runs in full-duplex mode using four pair Category 5. When using the mini-GBIC ports, it runs in optional 1000BASE-SX/LX fiber connectivity with mini-GBIC transceiver module. The Combo Gigabit Ethernet port will run only one of the mini-GBIC ports or RJ-45 ports. The mini-GBIC port priority is higher than the RJ-45 port, therefore if both the mini-GBIC port and RJ-45 port are connected, then only the mini-GBIC will activate.

These RJ-45 ports are Auto-MDI type ports. The Switch can auto transform to MDI-II or MDI-X type, so you can just make an easy connection without worrying if you are using a standard or crossover RJ-45 cable.



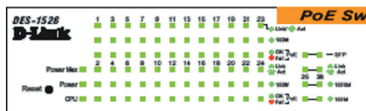
Connecting Network Cables

AC Power

The Switch uses the AC power supply 100-240V AC, 50-60 Hz. The power switch is located at the rear of the unit adjacent to the AC power connector and the system fan. The Switch's power supply will adjust to the local power source automatically and may be turned on without having any or all LAN segment cables connected.

4 LED Indicators

The front panel LEDs provide instant status feedback, and helps monitor and troubleshoot when needed.



LED indicators of the Switch

System LEDs

■ POWER:

On : When the Power LED lights on, the Switch is receiving power.

Off : When the Power turns off or the power cord has improper connection.

■ POWER:

On : When the system power resource remain $\leq 15.4W$ (the system power consumption $\geq 155W$), the LED will be on, the system will not provide power to the additional POE PD inserted.

Off : When the system has enough power more than $15.4W$ (the system power consumption $< 155W$).

■ CPU: Management Indicator

Blinking : When the CPU is working, the CPU LED is blinking.

On/Off : The CPU is not working.

Fast Ethernet PoE Port Status LEDs (Port 1 ~ 24)

■ Link/ACT: Link/Activity

On : When the Link/ACT LED lights on, the respective port is successfully connected to an Ethernet network.

Blinking: When the Link/ACT LED is blinking, the port is transmitting or receiving data on the Ethernet network.

Off : There is no link.

■ 100Mbps:

On : When the 100Mbps LED lights on, the respective port is connected to a 100Mbps Fast Ethernet network.

Off : When the respective port is connected to a 10Mbps Ethernet network.

■ PoE Status:

Green : When the PoE powered device (PD) is connected and the port supplies power normally.

Red : When the PoE port have the following failure happens:

- PoE power circuit shortage.

- Power over current: over the power current of PD's classification.

- Out of PoE voltage of 44 ~ 57 VDC output.

- Cost fail.

Off : No PoE powered device (PD) connected or unplugged the PoE output port.

Gigabit Ethernet Port Status LEDs

■ Link/ACT: Link/Activity

On : When the Link/ACT LED lights on, the respective port is successfully connected to an Ethernet network.

Blinking: When the Link/ACT LED is blinking, the port is transmitting or receiving data on the Ethernet network.

Off : There is no link.

■ 1000Mbps:

On : When the 1000Mbps LED lights on, the respective port is connected to a 1000Mbps Gigabit Ethernet network.

Off : When the respective port is connected to a 10Mbps Ethernet or 100Mbps Fast Ethernet network.

■ 100Mbps

On : When the 100Mbps LED lights on, the respective port is connected to a 100Mbps Fast Ethernet network.

Off : When the respective port is connected to a 10Mbps Ethernet or 1000Mbps Gigabit Ethernet network.

■ mini-GBIC (Use Combo ports or SFP)

On : When the mini-GBIC module is installed and connected to a network, the mini-GBIC LED lights on.

Off : No mini-GBIC module installed.

5

Installing the Web Management Utility

The following instructions guide you through the installation of the Web Management utility.

1. Insert the Utility CD in the CD-ROM Drive.
2. From the **Start** menu on the Windows desktop, choose **Run**.
3. In the **Run** dialog box, type D:\Web Management Utility\setup.exe (D:\ depends where your CD-ROM drive is located) and click **OK**.
4. Follow the on-screen instructions to install the utility.
5. Upon completion, go to **Program Files -> web_management_utility** and execute the Web Management utility. (Figure 1.)

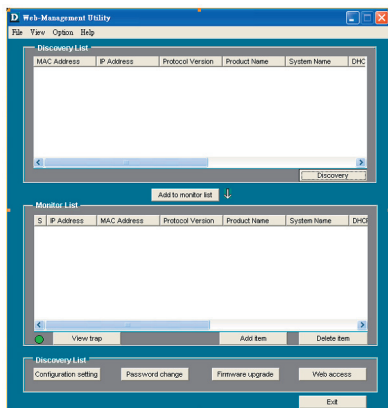


Figure 1. Web Management Utility

The Web Management Utility is divided into four parts, Discovery List, Monitor List, Device Setting, and Toolbar function, for detailed instructions, please refer to User's Manual.

6 Configuring the Switch

The DES-1526 has a Web GUI interface for smart switch configuration. The Switch can be configured through the Web browser. A network administrator can manage, control, and monitor the Switch from the local LAN. This section indicates how to configure the Switch to enable its smart functions.

Use Internet Explorer 5.0 or above Web browser.

Login

Before you configure this device, note that when the Web Smart Switch is configured through an Ethernet connection, make sure the manager PC must be set on same the **IP network**. For example, when the default IP address of the Web Smart Switch is **192.168.0.1**, then the manager PC should be set at 192.168.0.x (where x is a number between 2 and 254), and the default subnet mask is 255.255.255.0.

Open the Web browser program and Enter IP address **http://192.168.0.1** (the factory-default IP address setting) to the address location.(Figure 2.)



Figure 2.

Or through the Web Management Utility, you do not need to remember the IP Address, select the device shown in the Monitor List of the Web Management Utility to settle the device on the Web browser.

When the following dialog page appears, enter the default password “**admin**” and press Login to enter the main configuration window.(Figure 3.)

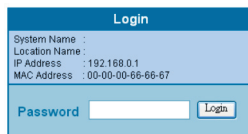


Figure 3.

After entering the password, the main page appears, and the screen will display the device status.(Figure 4.)

The screenshot shows the D-Link Express EtherNetwork web interface. On the left is a navigation menu with options like Setup, Maintenance, and Logout. The main content area is titled 'Switch Status' and contains a table with device information. Below that is a 'PORT Status' section with a table for 10/100 Mbps ports.

Switch Status

Product Name	DEB-1526
Firmware Version	1.00.04
Protocol Version	2.001.002
SNMP	Enable
IP Address	172.16.4.5
Subnet mask	255.255.0.0
Default gateway	172.16.1.254
Trap IP	0.0.0.0
MTC address	00-11-95-aa-aa-ab
System Name	
Location Name	
Login Timeout (minutes)	5
System Up Time	0 days 0 hours 26 mins 51 seconds

PORT Status

10/100 Mbps									
ID	Speed	Flow Control	QOS	Link Status	ID	Speed	Flow Control	QOS	Link Status
01	Auto	Enable	Normal	Down	13	Auto	Enable	Normal	Down
02	Auto	Enable	Normal	Down	14	Auto	Enable	Normal	Down
03	Auto	Enable	Normal	Down	15	Auto	Enable	Normal	Down
04	Auto	Enable	Normal	Down	16	Auto	Enable	Normal	Down

Figure 4.

Setup Menu

When the main page appears, the **Setup menu** is on the left side of the screen(Figure 5.). Click on the setup item that you want to configure. There are eleven options: **Port Settings, VLAN Settings, Trunk Settings, Mirror Settings, SNMP Settings, PoE Settings, Device Status, Statistics, System Settings, Trap Settings, Password Settings, Backup Settings, and Reset Settings** as shown in the Main Menu screen.

The screenshot shows the 'Setup' menu on the left side of the web interface. It lists various configuration options: Port, VLAN, Trunking, Mirror, SNMP, PoE, and Maintenance (Status, Statistics, System). Below these are Trap, Password, Backup Setting, and Reset Setting. A Logout link is at the bottom.

- Setup
 - Port
 - VLAN
 - Trunking
 - Mirror
 - SNMP
 - PoE
- Maintenance
 - Status
 - Statistics
 - System
- Trap
- Password
- Backup Setting
- Reset Setting
- Logout

Figure 5. Setup menu

Notes

Technical Support

You can find software updates and user documentation on the D-Link website.

D-Link provides free technical support for customers within the United States and within Canada for the duration of the warranty period on this product.

U.S. and Canadian customers can contact D-Link technical support through our website, or by phone.

Tech Support for customers within the United States:

D-Link Technical Support over the Telephone:

(877) 453-5465

24 hours a day, seven days a week

D-Link Technical Support over the Internet:

<http://support.dlink.com>

email:support@dlink.com

Tech Support for customers within Canada:

D-Link Technical Support over the Telephone:

(800) 361-5265

Monday to Friday 7:30am to 12:00am EST

D-Link Technical Support over the Internet:

<http://support.dlink.ca>

email:support@dlink.ca

Tech Support for customers within the United Kingdom & Ireland:

D-Link UK & Ireland Technical Support over the Telephone:

+44 (0)845 612 0003 (United Kingdom)

+353 (0)12 421 061 (Ireland)

Monday to Friday 8:00 am to 10:00 pm

D-Link Technical Support over the Internet:

<http://www.dlink.co.uk>

D-Link®

Building Networks for People