



Firmware Version: 4.10.B035
Boot Code Version: 1.00.012
MIB Version: 4.10.002
D-View Module Version: 4.0.0.6
Published: Jul. 20, 2017

These release notes include important information about D-Link switch firmware revisions. Please verify that these release notes are correct for your switch:

- If you are installing a new switch, please check the hardware version on the device label; make sure that your switch meets the system requirement of this firmware version. Please refer to [Revision History and System Requirement](#) for detailed firmware and hardware matrix.
- If the switch is powered on, you can check the hardware version by typing "show switch" command via Telnet or by checking the device information page on the web graphic user interface.
- If you plan to upgrade to the new firmware release, please refer to the [Upgrade Instructions](#) for the correct firmware upgrade procedure.

For more detailed information regarding our switch products, please refer to [Related Documentation](#).

You can also download the switch firmware, D-View modules and technical documentation from <http://tsd.dlink.com.tw>.

Content:

Upgrade Instructions:.....	4
Upgrade using CLI (via Telnet).....	4
Upgrade using Web-UI.....	4
Upgrade using D-Link Network Assistant.....	6
New Features:.....	9
Changes of MIB & D-View Module:.....	11
Changes of Command Line Interface:	15
Problem Fixed:	16
Known Issues:	19
Related Documentation:	26

Revision History and System Requirement:

Firmware Version	Date	Model	Hardware Version
Runtime: v4.10.B035 Boot: 1.00.012	20- Jul.-17	DES-1210-28	C1
Runtime: v4.10.B034 Boot: 1.00.012	11- Jul.-17	DES-1210-28	C1
Runtime: v4.10.B033 Boot: 1.00.012	15- Jun.-17	DES-1210-28	C1
Runtime: v4.10.B032 Boot: 1.00.012	27- Apr.-17	DES-1210-28	C1
Runtime: v4.10.B029 Boot: 1.00.012	28- Dec.-16	DES-1210-28	C1
Runtime: v4.10.B028 Boot: 1.00.012	20- Dec.-16	DES-1210-28	C1
Runtime: v4.10.B027 Boot: 1.00.012	28- Nov.-16	DES-1210-28	C1
Runtime: v4.10.B026 Boot: 1.00.012	16- Nov.-16	DES-1210-28	C1
Runtime: v4.10.B025 Boot: 1.00.012	27- Oct.-16	DES-1210-28	C1
Runtime: v4.10.B021 Boot: 1.00.012	29- Aug.-16	DES-1210-28	C1
Runtime: v4.10.B019 Boot: 1.00.012	14- Jun.-16	DES-1210-28	C1
Runtime: v4.10.B018 Boot: 1.00.012	27- May.-16	DES-1210-28	C1
Runtime: v4.10.B017 Boot: 1.00.012	17- May.-16	DES-1210-28	C1
Runtime: v4.10.B014 Boot: 1.00.012	25- Mar.-16	DES-1210-28	C1
Runtime: v4.10.B013 Boot: 1.00.012	16- Mar.-16	DES-1210-28	C1
Runtime: v4.10.B012 Boot: 1.00.012	03- Mar.-16	DES-1210-28	C1

Runtime: v4.10.B011 Boot: 1.00.012	22- Jan.-16	DES-1210-28	C1
Runtime: v4.10.B008 Boot: 1.00.012	07- Jan.-16	DES-1210-28	C1
Runtime: v4.10.B005 Boot: 1.00.012	23- Dec.-15	DES-1210-28	C1
Runtime: v4.10.004 Boot: 1.00.012	11- Dec.-15	DES-1210-28	C1
Runtime: v4.00.B087 Boot: 1.00.012	23- Nov.-15	DES-1210-28	C1
Runtime: v4.00.B086 Boot: 1.00.012	20- Nov.-15	DES-1210-28	C1
Runtime: v4.00.B084 Boot: 1.00.012	19- Oct.-15	DES-1210-28	C1
Runtime: v4.00.B083 Boot: 1.00.012	14- Oct.-15	DES-1210-28	C1
Runtime: v4.00.B081 Boot: 1.00.012	18- Sep.-15	DES-1210-28	C1
Runtime: v4.00.B076 Boot: 1.00.012	19- Aug.-15	DES-1210-28	C1
Runtime: v4.00.B074 Boot: 1.00.012	03- Aug.-15	DES-1210-28	C1
Runtime: v4.00.064 Boot: 1.00.012	05- Feb.-15	DES-1210-28	C1
Runtime: v4.00.B056 Boot: 1.00.010	23- Oct.-14	DES-1210-28	C1
Runtime: v4.00.B055 Boot: 1.00.009	09- Sep.-14	DES-1210-28	C1
Runtime: v4.00.B053 Boot: 1.00.009	21- Aug.-14	DES-1210-28	C1
Runtime: v4.00.042 Boot: 1.00.009	17- Apr.-14	DES-1210-28	C1

Upgrade Instructions:

D-Link Smart Switches support firmware upgrade via TFTP server. You can download the firmware from D-Link web site <http://tsd.dlink.com.tw>, and copy the downloaded firmware to the TFTP server folder. Please make sure that the TFTP server is accessible from the switch via networks.

Upgrade using CLI (via Telnet)

1. Make sure the network connection between the switch and PC is active.
2. Use software that supports telnet, for example, HyperTerminal or Telnet command in Microsoft Windows, to connect to the switch. If you are using Telnet command, type the command followed by the switch IP address, eg. *telnet 10.90.90.90*.
3. The logon prompt will appear.

The switch will prompt the user to enter his/her username and password. It should be noted that upon the initial connection, both the default user name and password are **admin**.

To upgrade the switch firmware, execute the following command:

Command	Function
download{firmware_fromTFTP tftp://ip-address/filename cfg_fromTFTP tftp://ip-address/filename}	Download firmware file from the TFTP server to the switch.

When completing firmware upgrade, the following messages will pop up.

```
Device will reboot after firmware upgraded successfully
Image upgraded successfully
```

4. Execute the following command to check the firmware version and switch's information.

Command	Function
show switch	Display the information of current firmware and boot version.

Example:

1. **DES-1210-28:**
 Command: download firmware_from TFTP tftp://10.90.90.91
 DES-1210-28-C1-4-00-042.hex
 Device will reboot after firmware upgraded successfully
 Image upgraded successfully
2. **DES-1210-28:**
 Command: show switch
 DES-1210-28> show switch
 System name :

```

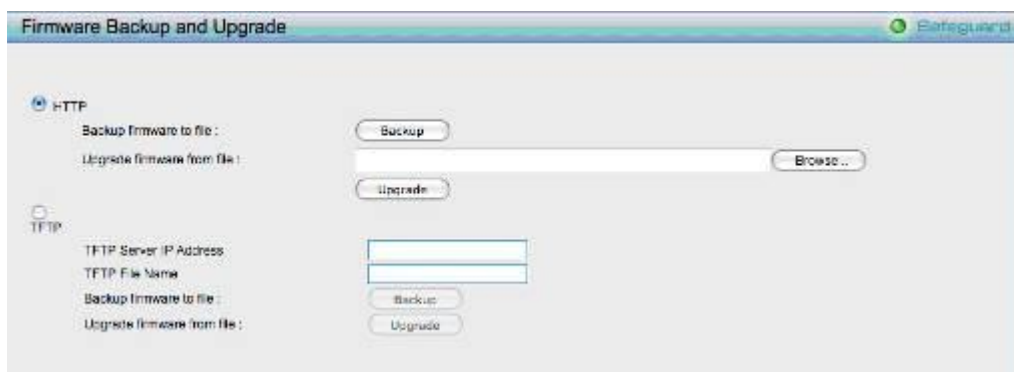
System Contact           :
System Location          :
System up time           : 0 days, 0 hrs, 0 min, 25 secs
System Time              : 01/01/2013 00:00:19
System hardware version  : C1
System firmware version  : 4.00.042
System boot version      : 1.00.009
System serial number     : QBDES12105200
MAC Address              : 9C-D6-43-28-D7-00
    
```

Upgrade using Web-UI

1. Connect a workstation installed with java SE runtime environment to any switch port of the device.
2. Open the web browser from the workstation and enter the IP address of the switch. The switch's default IP address is 10.90.90.90.
3. Enter administrator's password when prompted. The password is **admin** by default.
4. To update switch's firmware or configuration file, select **Tools > Firmware Backup & Upgrade** from the banner.



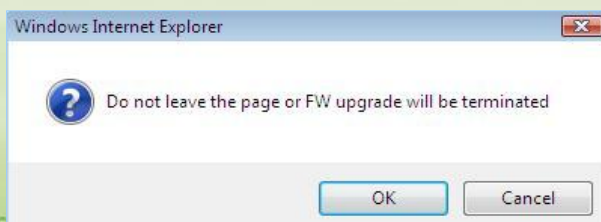
5. Two methods can be selected : **HTTP** or **TFTP**



- a. Click **Browse** to browse your inventories for a saved firmware file
- b. Click **Upgrade** after selecting the firmware file you want to restore
- c. Click **OK** to continue with firmware upgrade



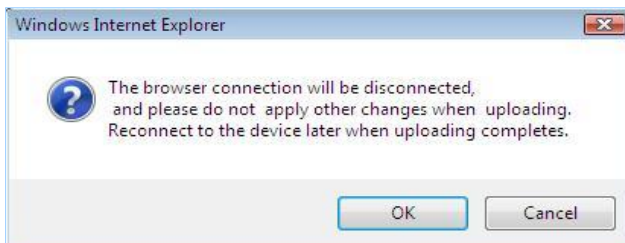
- d. Click **OK** to continue with firmware upgrade



- e. Wait until the "Firmware Upgrade Successful" message pops up and login again after device boots up.



7. Select **TFTP** to upgrade the firmware to or from a remote TFTP server.
 - a. Enter the name of the firmware file located on the TFTP server
 - b. Click **Upgrade** after selecting the firmware file you want to restore
 - c. Click **OK** to continue with firmware upgrade

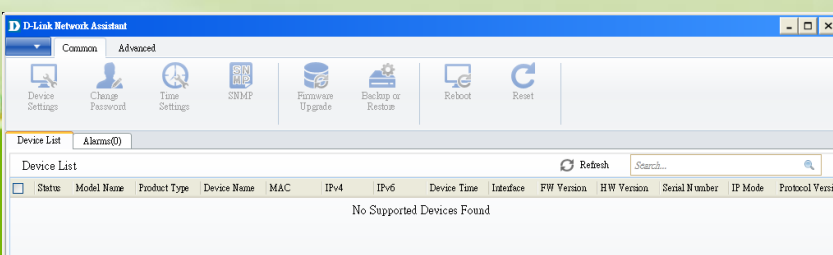


- d. Wait until the firmware upgrade ends and login again after device boots up.

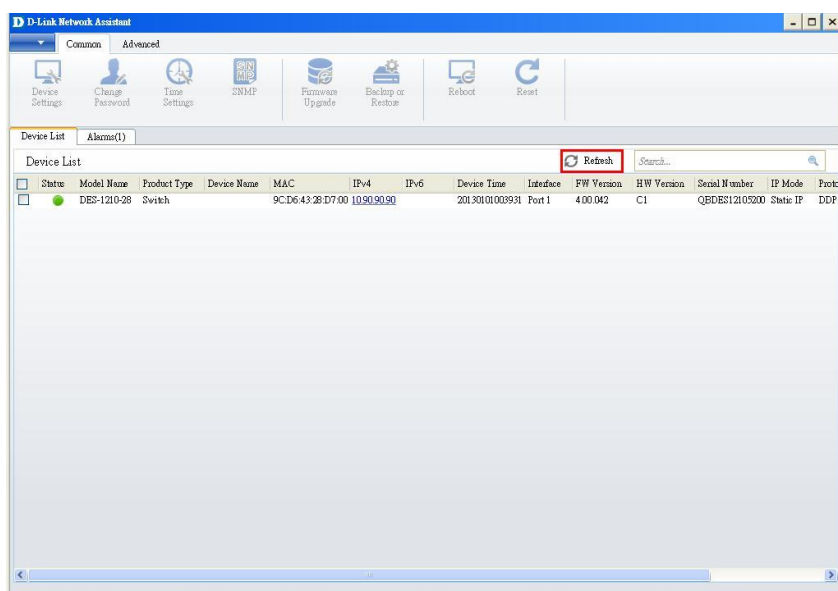


Upgrade using D-Link Network Assistant

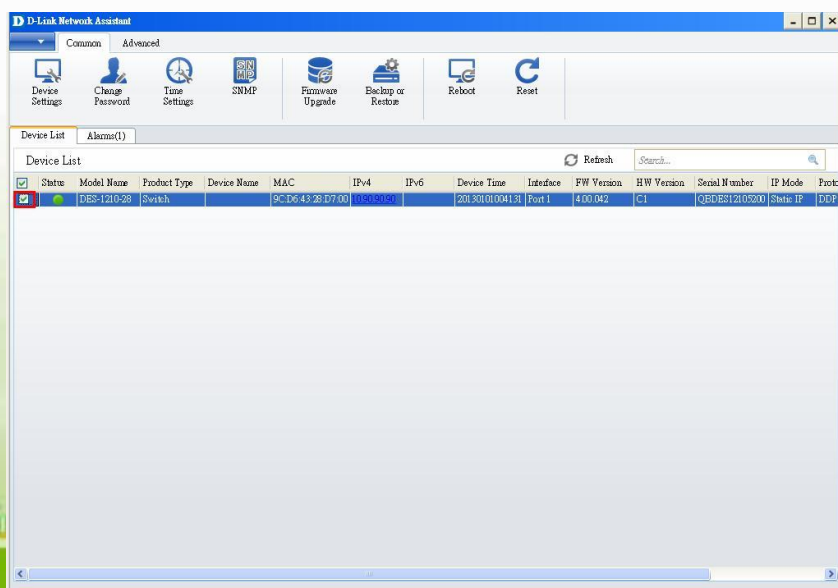
1. Connect a workstation installed with java SE runtime environment to any switch port of the device
2. Execute D-Link Network Assistant



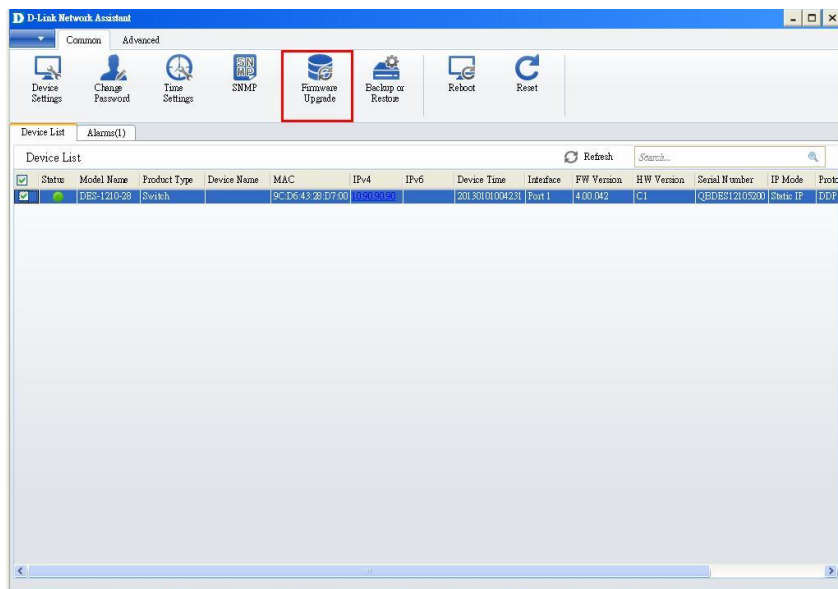
3. Click Refresh button to search target switch



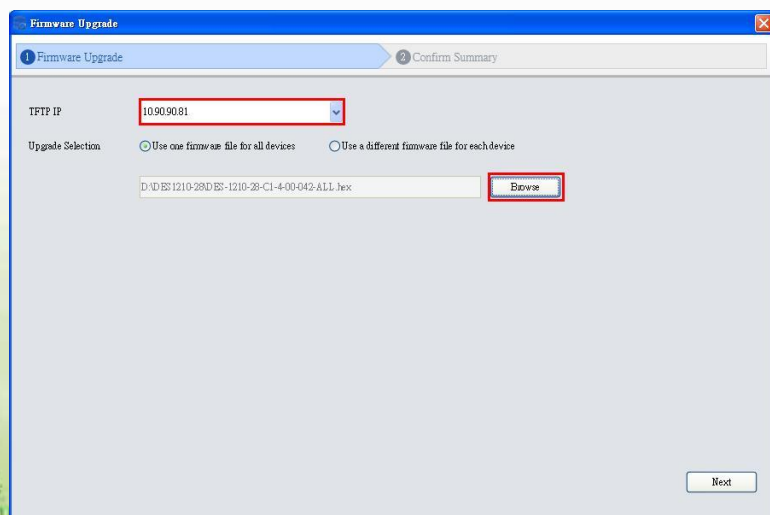
4. Single click the icon of the column to choose the target switch



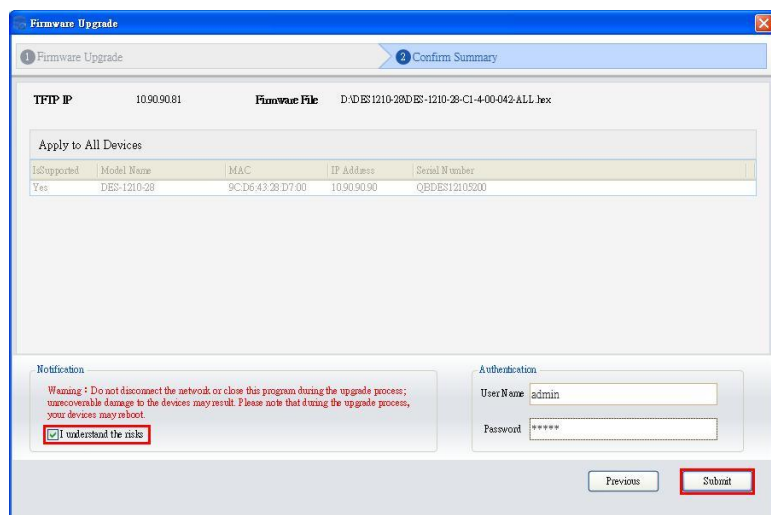
5. Click Firmware Upgrade button



6. Select PC IP address is used to connect the target switch, then click Browse button and select the firmware file (Model name_HW ver._FW ver. .hex) on your local hard drive.



7. Click the checkbox and click “Submit” button to start firmware upgrade.



Firmware Upgrade

1 Firmware Upgrade 2 Confirm Summary

TFTP IP: 10.90.90.81 Firmware File: D:\DES-1210-28\DES-1210-28-C1-4-00-042-ALL.hex

IsSupported	Model Name	MAC	IP Address	Serial Number
Yes	DES-1210-28	9C:D6:43:28:D7:00	10.90.90.90	QBDES12105200

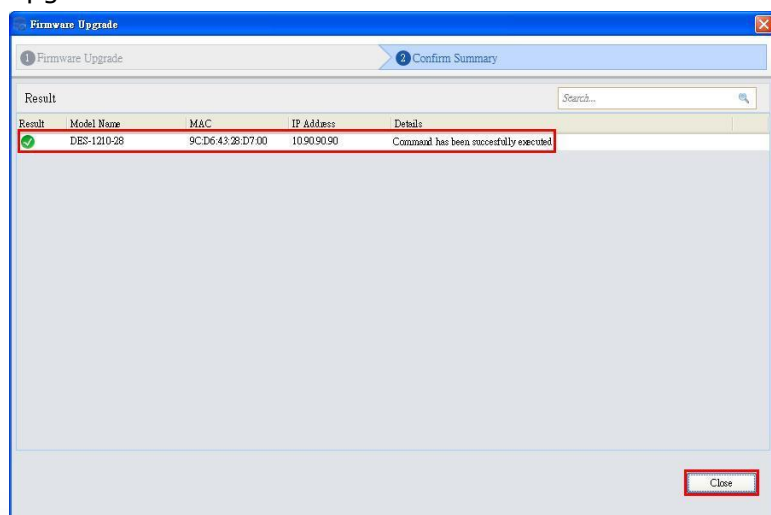
Notification
Warning: Do not disconnect the network or close this program during the upgrade process; irreversible damage to the devices may result. Please note that during the upgrade process, your devices may reboot.

☒ I understand the risks

Authentication
User Name: admin
Password: *****

Previous Submit

8. Once the message changed to success, click “Close” button to complete and exit the firmware upgrade



Firmware Upgrade

1 Firmware Upgrade 2 Confirm Summary

Result

Result	Model Name	MAC	IP Address	Details
✓	DES-1210-28	9C:D6:43:28:D7:00	10.90.90.90	Command has been successfully executed

Close

New Features:

Firmware Version	New Features
V4.10.B035	N/A
V4.10.B034	N/A
V4.10.B033	N/A

V4.10.B032	N/A
V4.10.B029	N/A
V4.10.B028	N/A
V4.10.B027	N/A
V4.10.B026	N/A
V4.10.B025	N/A
V4.10.B021	N/A
V4.10.B019	N/A
V4.10.B018	N/A
V4.10.B017	N/A
V4.10.B014	N/A
V4.10.B013	N/A
V4.10.B012	N/A
V4.10.B011	N/A
V4.10.B008	N/A
V4.10.B005	N/A
V4.10.004	Formal Release
V4.00.B087	N/A
V4.00.B086	N/A
V4.00.B084	N/A
V4.00.B083	N/A

V4.00.B081	N/A
V4.00.B076	N/A
V4.00.B074	N/A
V4.00.064	N/A
V4.00.B056	N/A
V4.00.B055	N/A
V4.00.B053	N/A
V4.00.042	First Release

Changes of MIB & D-View Module:

The new features of MIB file are also included in the corresponding D-View module. Please download the D-View module from <http://tsd.dlink.com.tw>. For detailed changes of MIB content, please refer to the modification history in each MIB file.

Firmware Version	MIB File	New Features
V4.10.B035	DES-1210-28-CX-4-10-002.mib	N/A
V4.10.B034	DES-1210-28-CX-4-10-002.mib	N/A
V4.10.B033	DES-1210-28-CX-4-10-002.mib	N/A
V4.10.B032	DES-1210-28-CX-4-10-002.mib	N/A
V4.10.B029	DES-1210-28-CX-4-10-002.mib	N/A
V4.10.B028	DES-1210-28-CX-4-10-002.mib	N/A
V4.10.B027	DES-1210-28-CX-4-10-002.mib	N/A
V4.10.B026	DES-1210-28-CX-4-10-002.mib	N/A
V4.10.B025	DES-1210-28-CX-4-10-002.mib	N/A

V4.10.B021	DES-1210-28-CX-4-10-002.mib	N/A
V4.10.B019	DES-1210-28-CX-4-10-002.mib	N/A
V4.10.B018	DES-1210-28-CX-4-10-002.mib	N/A
V4.10.B017	DES-1210-28-CX-4-10-002.mib	N/A
V4.10.B014	DES-1210-28-CX-4-10-002.mib	N/A
V4.10.B013	DES-1210-28-CX-4-10-002.mib	N/A
V4.10.B012	DES-1210-28-CX-4-10-002.mib	N/A
V4.10.B011	DES-1210-28-CX-4-10-002.mib	N/A
V4.10.B008	DES-1210-28-CX-4-10-002.mib	N/A
V4.10.B005	DES-1210-28-CX-4-10-002.mib	N/A
V4.10.004	DES-1210-28-CX-4-10-002.mib	Formal Release
V4.00.B087	DES-1210-28-CX-4-00-B017.mib	N/A
V4.00.B086	DES-1210-28-CX-4-00-B017.mib	N/A
V4.00.B084	DES-1210-28-CX-4-00-B017.mib	N/A
V4.00.B083	DES-1210-28-CX-4-00-B017.mib	N/A
V4.00.B081	DES-1210-28-CX-4-00-016.mib	N/A
V4.00.B076	DES-1210-28-CX-4-00-011.mib	N/A
V4.00.B074	DES-1210-28-CX-4-00-011.mib	N/A
V4.00.064	DES-1210-28-CX-4-00-011.mib	N/A
V4.00.B056	DES-1210-28-CX-4-00-011.mib	N/A
V4.00.B055	DES-1210-28-CX-4-00-011.mib	N/A

V4.00.B053	DES-1210-28-CX-4-00-011.mib	N/A
V4.00.042	DES-1210-28-CX-4-00-011.mib	First Release

Firmware Version	D-View Module File	New Features
V4.10.B035	DView_DES-1210-28C1_4.0.0.6_setup.exe	N/A
V4.10.B034	DView_DES-1210-28C1_4.0.0.6_setup.exe	N/A
V4.10.B033	DView_DES-1210-28C1_4.0.0.6_setup.exe	N/A
V4.10.B032	DView_DES-1210-28C1_4.0.0.6_setup.exe	N/A
V4.10.B029	DView_DES-1210-28C1_4.0.0.6_setup.exe	N/A
V4.10.B028	DView_DES-1210-28C1_4.0.0.6_setup.exe	N/A
V4.10.B027	DView_DES-1210-28C1_4.0.0.6_setup.exe	N/A
V4.10.B026	DView_DES-1210-28C1_4.0.0.6_setup.exe	N/A
V4.10.B025	DView_DES-1210-28C1_4.0.0.6_setup.exe	N/A
V4.10.B021	DView_DES-1210-28C1_4.0.0.6_setup.exe	N/A
V4.10.B019	DView_DES-1210-28C1_4.0.0.6_setup.exe	N/A
V4.10.B018	DView_DES-1210-28C1_4.0.0.6_setup.exe	N/A
V4.10.B017	DView_DES-1210-28C1_4.0.0.6_setup.exe	N/A
V4.10.B014	DView_DES-1210-28C1_4.0.0.6_setup.exe	N/A
V4.10.B013	DView_DES-1210-28C1_4.0.0.6_setup.exe	N/A

V4.10.B012	DView_DES-1210-28C1_4.0.0.6_setup.exe	N/A
V4.10.B011	DView_DES-1210-28C1_4.0.0.6_setup.exe	N/A
V4.10.B008	DView_DES-1210-28C1_4.0.0.6_setup.exe	N/A
V4.10.B005	DView_DES-1210-28C1_4.0.0.6_setup.exe	N/A
V4.10.004	DView_DES-1210-28C1_4.0.0.6_setup.exe	N/A
V4.00.B087	DV_DES-1210-28_V4.0.0.4_FW_v4.00.042.exe	N/A
V4.00.B086	DV_DES-1210-28_V4.0.0.4_FW_v4.00.042.exe	N/A
V4.00.B084	DV_DES-1210-28_V4.0.0.4_FW_v4.00.042.exe	N/A
V4.00.B083	DV_DES-1210-28_V4.0.0.4_FW_v4.00.042.exe	N/A
V4.00.B081	DV_DES-1210-28_V4.0.0.4_FW_v4.00.042.exe	N/A
V4.00.B076	DV_DES-1210-28_V4.0.0.4_FW_v4.00.042.exe	N/A
V4.00.B074	DV_DES-1210-28_V4.0.0.4_FW_v4.00.042.exe	N/A
V4.00.064	DV_DES-1210-28_V4.0.0.4_FW_v4.00.042.exe	N/A
V4.00.B056	DV_DES-1210-28_V4.0.0.4_FW_v4.00.042.exe	N/A
V4.00.B055	DV_DES-1210-28_V4.0.0.4_FW_v4.00.042.exe	N/A
V4.00.B053	DV_DES-1210-28_V4.0.0.4_FW_v4.00.042.exe	N/A
V4.00.042	DV_DES-1210-28_V4.0.0.4_FW_v4.00.042.exe	First Release

Changes of Command Line Interface:

The section below only shows command line changes that may bring backward compatibility issues with configuration settings for previous version of firmware.
Any new feature commands that do not have backward compatibility issues are not included in the below section.

Firmware Version	Changes
V4.10.B035	N/A
V4.10.B034	N/A
V4.10.B033	N/A
V4.10.B032	N/A
V4.10.B029	N/A
V4.10.B028	N/A
V4.10.B027	N/A
V4.10.B026	N/A
V4.10.B025	N/A
V4.10.B021	N/A
V4.10.B019	N/A
V4.10.B018	N/A
V4.10.B017	N/A
V4.10.B014	N/A

V4.10.B013	N/A
V4.10.B012	N/A
V4.10.B011	N/A
V4.10.B008	N/A
V4.10.B005	N/A
V4.10.004	Formal Release
V4.00.B087	N/A
V4.00.B086	N/A
V4.00.B084	1. Change default of EEE to disable.
V4.00.B083	N/A
V4.00.B081	N/A
V4.00.B076	N/A
V4.00.B074	N/A
V4.00.064	N/A
V4.00.B056	N/A
V4.00.B055	N/A
V4.00.B053	N/A
V4.00.042	First Release

Problem Fixed:

Firmware Version	Problems Fixed
------------------	----------------

V4.10.B035	1. Issue No: DEUR20170622000005 The telephone won't be listed in the Voice Device List.
V4.10.B034	1. Issue No: HQ20170704000002 802.1x Radius authentication key showing invalid[IMA20170703000002-India]
V4.10.B033	1. When management is enabled and ARP related functions are disabled, only record management VLAN ARP. Fix Network is unstable via DGS-1210-20[DI20170531000005-Japan].
V4.10.B032	1. Dynamic Forwarding table cannot be displayed[DI20170329000001-Japan] 2. Gigabit port of DES-1210-28 can not be forced into 1000M Full[DGC20170420000003-China]
V4.10.B029	1. DES-1210 rev.C1 accepts incompatible firmware[DRU20161207000001-Russia] 2. DGS-1210 connection is unstable[DGC20161103000001-Taiwan] 3. DGS-1210 issue with multicast packets[DRU20161208000005-Russia] 4. filter ISIS packets[DGC20161222000002-Taiwan]
V4.10.B028	1. [DRU20161025000001-Russia] DES-1210-28P issue with device management 2.
V4.10.B027	1. [DRU20161110000001] STP port cost on aggregation lacp link.
V4.10.B026	1. Issue loading web interface in Mac OS 10.12[DUSA20161108000001-Canada].
V4.10.B025	1. Unable to delete snmp group settings [DI20161011000001-Japan]
V4.10.B021	1. SNMP Community Name needs to support special characters "!". 2. DGS-1210: Manual / Sync Time Settings with TimeZone settings [DUSA20160730000002-USA]. 3. DGS-1210-52P issue with link aggregation.[DRU20160811000004-Russia] 4. DGS-1210 rev.C1 can't configure DOS attack prevention [DRU20160819000001-Russia].
V4.10.B019	1. The same poe issue with case:DGC20160406000001[DGC20160523000002-Taiwan].
V4.10.B018	1. VLAN ID can't save [DEUR20160510000007-Eastern Europe].
V4.10.B017	1. PORT DESCRIPTION IS NOT PROPAGATED[DEUR20160420000006-Eastern Europe]
V4.10.B014	1. DES-1210/C1 issue with 64 counters [DRU20160302000006-Russia].
V4.10.B013	1. DGS-1210-52 issue with CARP entries [DRU20160216000002-Russia].
V4.10.B012	1. Fix Switch Web Server issue, WebUI blocked by Kaspersky antivirus [DRU20160125000007-Russia]. 2. DGS-1210-28 DNA and host IP address [DEUR20160204000002-Central Europe].
V4.10.B011	1. Remove web login timeout to improve user-experience. 2. Fix browser auto save website account and password incorrect issue.
V4.10.B008	1. Fix change password with special characters, cannot login issue. 2. WebGUI will login timeout after we enter "Port Statistics".

V4.10.B005	<ol style="list-style-type: none"> 1. DGS-1210 DHCP Enhancement for Whitesky. 2. DGS-1210-28 save configuration failed ! [DGC20151217000003-China] 3. Increase security with web login. 4. Port 28 can not learn MAC address when ACL set on port 1 [DEUR20151120000005-Eastern Europe]
V4.10.004	<ol style="list-style-type: none"> 1. For formal release.
V4.00.B087	<ol style="list-style-type: none"> 1. Make sure the issue of user can download configuration file with any authentication will be fixed. 2. Configuration backup button not work.
V4.00.B086	<ol style="list-style-type: none"> 1. Change the password field in the html file to replace with "check" or other suitable field. 2. To remove the concern, we suggest to run hash on the client side, too. In other words, please change the java script to make sure client will send out new password which is been hashed and send to switch. Then switch need to run hash with its original password and compare these two string are the same. 3. Gamebit value should be hashed. It will help to make sure to randomize gamebit value from user point of view. 4. Make sure the issue of user can download configuration file with any authentication will be fixed.
V4.00.B084	N/A
V4.00.B083	<ol style="list-style-type: none"> 1. DGS-1210 WebSmart wrong stp cost on lacp links[DRU20150907000006-Russia]. 2. DGS-1210 rev.B1 reboots[DRU20150907000005-Russia].
V4.00.B081	<ol style="list-style-type: none"> 1. [DRU20150729000002]DES-1210 dos prevention blocks ip phones traffic. 2. [DRU20150903000003-Russia]DES-1210-28P issue with adding port to vlan. 3. [DI20150817000001-Japan]Cable Diagnostics. 4. [DRU20150907000005-Russia]DGS-1210 rev.B1 reboots by some special URL.
V4.00.B076	<ol style="list-style-type: none"> 1. Fix [HQ20150814000010]DGS-1210-10P the Admin password can be changed by everybody without knowing the Admin password.[DEUR20150813000005-Central Europe]
V4.00.B074	<ol style="list-style-type: none"> 1. 1. OpenSSL issue: CVE-2015-1789 (OpenSSL before 0.9.8zg) https://web.nvd.nist.gov/view/vuln/detail?vulnId=CVE-2015-1789 2. 2. [DGC20150626000004-Taiwan]MAC ACL function problem.
V4.00.064	<ol style="list-style-type: none"> 1. Fix Multilanguage DE issue. 2. Fix config backup page issue. 3. Fix config backup page at DE language issue. 4. Fix IPv6 TFTP Fw backup fail.
V4.00.B056	<ol style="list-style-type: none"> 1. D-Track [HQ20141021000013] : Configuration is not saved for Multicast Filtering Mode.
V4.00.B055	<ol style="list-style-type: none"> 1. Fix incorrect model on SSL certificate.
V4.00.B053	<ol style="list-style-type: none"> 1. IGMP can't create multicast group when received IGMPv2 report packet without router alert option. 2. OpenSSL before 0.9.8za, which allows man-in-the-middle attack, and consequently hijacks sessions or obtains sensitive information.
V4.00.042	First Release

* D-Link tracking number is enclosed in ()

Known Issues:

Firmware Version	Issues	Workaround
V4.10.B035	N/A	None
V4.10.B034	N/A	None
V4.10.B033	N/A	None
V4.10.B032	N/A	None
V4.10.B029	N/A	None
V4.10.B028	N/A	None
V4.10.B027	N/A	None
V4.10.B026	N/A	None
V4.10.B025	N/A	None
V4.10.B021	N/A	None
V4.10.B019	N/A	None
V4.10.B018	N/A	None
V4.10.B017	N/A	None
V4.10.B014	N/A	None
V4.10.B013	N/A	None
V4.10.B012	N/A	None
V4.10.B011	N/A	None
V4.10.B008	N/A	None
V4.10.B005	N/A	None

V4.10.004	N/A	None
V4.00.B087	N/A	None
V4.00.B086	N/A	None
V4.00.B084	N/A	None
V4.00.B083	N/A	None
V4.00.B081	N/A	None
V4.00.B076	N/A	None
V4.00.B074	N/A	None
V4.00.064	N/A	None
V4.00.B056	<ol style="list-style-type: none"> 1. The DUT does follow RFC-2131 to forward DHCP confirm request in RFC-2131 T1 and T2 stage by T1 and T2 timer. (Known issue) 2. The DUT Spanning Tree external Cost does not follow link speed to auto change cost value that does not fit D-Link request. (Known Issue) 3. The DUT DHCPv6 does not follow RFC3315 to support T1 (Renew) and T2 (rebind) function. (Known Issue) 4. When we set ACL rule, DHCP client can get IP correctly. Test Step: 1. Create ACL IPv4 extended rule and deny UDP source port 67. 2. Set DHCP server uplink port apply above ACL rule. 3. Other interface DHCP client can get IP correctly. This issue is DHCP Server screen priority higher than ACL caused, after confirm with D-Link, they accept note this issue to be known issue, if we receive customer's support case, they will request to modify DHCP Server Screen priority settings with ACL.(Known Issue) 5. The DUT Loopback detection function priority is lower than 802.1x unauth interface, that does not fit D-Link request. (Known Issue) 6. The DUT IP ACL deny rule cannot drop DHCP packets when DHCP relay disable. (Known Issue) 7. The DUT DHCP client does not change Source IP to 	None

	<p>0.0.0.0 to forward DHCP discover when reach DHCP server lease time. (Known Issue)</p> <p>8. When DUT set to DHCP client mode then apply settings again via Web UI, the DUT does not forward DHCP request packets. (Known Issue)</p> <p>9. When we delete already create DHCP relay Server entry from th4 to th1, the DUT will pop up error message. (Known Issue)</p> <p>10. Run a Endurance test,when DUT uplink trunking port does not get DHCPV6. (Known Issue)</p> <p>11. Cable Diagnostics test. When we test the link down port, the Cable Fault Distance display incorrectly. (Limitation)</p> <p>12. When device boot up firmware code not ready,device interface not always keep in disable state, that will cause application issue. (Limitation)</p> <p>13. EEE Compatibility issue. When DUT EEE function enable and link partner enable too. Then keep to ping DUT,sometimes we can found DUT linkdown linkup. (Limitation)</p> <p>14. D-Link Lab request the device ping respond time need under 1ms, our device cannot fit this request. (Limitation)</p> <p>15. The DUT Cable Diagnostics check unlink interface test result is different by different interface. (Limitation)</p> <p>16. The DUT Multicast filter function does follow per-port settings, but Giga product is follow prt-VLAN settings. (Limitation)</p> <p>17. The DUT will stop process trap to CPU control Packets when save configuration that will affect real network application. (Limitation)</p> <p>18. The DUT Cable Diagnostics check unlink 90m Cat7 cable, test result port11 length range display 50m~80m and 80m~100m. (Limitation)</p> <p>19. The DUT Cable Diagnostics check unlink 90m Cat7 cable, test result port115 length range display 100m~140m. (Limitation)</p>	
V4.00.B055	<p>1. The DUT does follow RFC-2131 to forward DHCP confirm request in RFC-2131 T1 and T2 stage by T1 and T2 timer. (Known issue)</p> <p>2. The DUT Spanning Tree external Cost does not follow link speed to auto change cost value that does not fit D-Link request. (Known Issue)</p> <p>3. The DUT DHCPv6 does not follow RFC3315 to support</p>	

T1 (Renew) and T2 (rebind) function. (Known Issue)

4. When we set ACL rule, DHCP client can get IP correctly.
Test Step:
1. Create ACL IPv4 extended rule and deny UDP source port 67.
2. Set DHCP server uplink port apply above ACL rule.
3. Other interface DHCP client can get IP correctly.

This issue is DHCP Server screen priority higher than ACL caused, after confirm with D-Link, they accept note this issue to be known issue, if we receive customer's support case, they will request to modify DHCP Server Screen priority settings with ACL.(Known Issue)

5. The DUT Loopback detection function priority is lower than 802.1x unauth interface, that does not fit D-Link request. (Known Issue)
6. The DUT IP ACL deny rule cannot drop DHCP packets when DHCP relay disable. (Known Issue)
7. The DUT DHCP client does not change Source IP to 0.0.0.0 to forward DHCP discover when reach DHCP server lease time. (Known Issue)
8. When DUT set to DHCP client mode then apply settings again via Web UI, the DUT does not forward DHCP request packets. (Known Issue)
9. When we delete already create DHCP relay Server entry from th4 to th1, the DUT will pop up error message. (Known Issue)
10. Run a Endurance test,when DUT uplink trunking port does not get DHCPV6. (Known Issue)
11. Cable Diagnostics test. When we test the link down port, the Cable Fault Distance display incorrectly. (Limitation)
12. When device boot up firmware code not ready,device interface not always keep in disable state, that will cause application issue. (Limitation)
13. EEE Compatibility issue. When DUT EEE function enable and link partner enable too. Then keep to ping DUT,sometimes we can found DUT linkdown linkup. (Limitation)
14. D-Link Lab request the device ping respond time need under 1ms, our device cannot fit this request. (Limitation)
15. The DUT Cable Diagnostics check unlink interface test result is different by different interface. (Limitation)
16. The DUT Multicast filter function does follow per-port settings, but Giga product is follow prt-VLAN settings.

	<p>(Limitation)</p> <p>17. The DUT will stop process trap to CPU control Packets when save configuration that will affect real network application. (Limitation)</p> <p>18. The DUT Cable Diagnostics check unlink 90m Cat7 cable, test result port11 length range display 50m~80m and 80m~100m. (Limitation)</p> <p>19. The DUT Cable Diagnostics check unlink 90m Cat7 cable, test result port115 length range display 100m~140m. (Limitation)</p>	
V4.00.B053	<p>1. The DUT does follow RFC-2131 to forward DHCP confirm request in RFC-2131 T1 and T2 stage by T1 and T2 timer. (Known issue)</p> <p>2. The DUT Spanning Tree external Cost does not follow link speed to auto change cost value that does not fit D-Link request. (Known Issue)</p> <p>3. The DUT DHCPv6 does not follow RFC3315 to support T1 (Renew) and T2 (rebind) function. (Known Issue)</p> <p>4. When we set ACL rule, DHCP client can get IP correctly. Test Step: 1. Create ACL IPv4 extended rule and deny UDP source port 67. 2. Set DHCP server uplink port apply above ACL rule. 3. Other interface DHCP client can get IP correctly.</p> <p>This issue is DHCP Server screen priority higher than ACL caused, after confirm with D-Link, they accept note this issue to be known issue, if we receive customer's support case, they will request to modify DHCP Server Screen priority settings with ACL.(Known Issue)</p> <p>5. The DUT Loopback detection function priority is lower than 802.1x unauth interface, that does not fit D-Link request. (Known Issue)</p> <p>6. The DUT IP ACL deny rule cannot drop DHCP packets when DHCP relay disable. (Known Issue)</p> <p>7. The DUT DHCP client does not change Source IP to 0.0.0.0 to forward DHCP discover when reach DHCP server lease time. (Known Issue)</p> <p>8. When DUT set to DHCP client mode then apply settings again via Web UI, the DUT does not forward DHCP request packets. (Known Issue)</p> <p>9. When we delete already create DHCP relay Server entry from th4 to th1, the DUT will pop up error message. (Known Issue)</p>	None

	<ol style="list-style-type: none"> Run a Endurance test,when DUT uplink trunking port does not get DHCPV6. (Known Issue) Cable Diagnostics test. When we test the link down port, the Cable Fault Distance display incorrectly. (Limitation) When device boot up firmware code not ready,device interface not always keep in disable state, that will cause application issue. (Limitation) EEE Compatibility issue. When DUT EEE function enable and link partner enable too. Then keep to ping DUT,sometimes we can found DUT linkdown linkup. (Limitation) D-Link Lab request the device ping respond time need under 1ms, our device cannot fit this request. (Limitation) The DUT Cable Diagnostics check unlink interface test result is different by different interface. (Limitation) The DUT Multicast filter function does follow per-port settings, but Giga product is follow prt-VLAN settings. (Limitation) The DUT will stop process trap to CPU control Packets when save configuration that will affect real network application. (Limitation) The DUT Cable Diagnostics check unlink 90m Cat7 cable, test result port11 length range display 50m~80m and 80m~100m. (Limitation) The DUT Cable Diagnostics check unlink 90m Cat7 cable, test result port115 length range display 100m~140m. (Limitation) 	
V4.00.042	<ol style="list-style-type: none"> The DUT does follow RFC-2131 to forward DHCP confirm request in RFC-2131 T1 and T2 stage by T1 and T2 timer. (Known issue) The DUT Spanning Tree external Cost does not follow link speed to auto change cost value that does not fit D-Link request. (Known Issue) The DUT LBD and STP port state settings still need to confirm global settings. When LBD global settings disable, the STP port state should allow enable even LBD port state keep in enable state. Please refer to attach file.(Known Issue) The DUT Multilanguage "Traditional Chinese" some page exist simplified Chinese and GUI display error problem. (Known issue) The DUT ASV VLAN Web Settings page display incorrectly. (Known issue) 	

6. The DUT DHCPv6 does not follow RFC3315 to support T1 (Renew) and T2 (rebind) function. (Known Issue)
7. When we set ACL rule, DHCP client can get IP correctly.
Test Step:
 1. Create ACL IPv4 extended rule and deny UDP source port 67.
 2. Set DHCP server uplink port apply above ACL rule.
 3. Other interface DHCP client can get IP correctly.

This issue is DHCP Server screen priority higher than ACL caused, after confirm with D-Link, they accept note this issue to be known issue, if we receive customer's support case, they will request to modify DHCP Server Screen priority settings with ACL.(Known Issue)
8. The DUT Loopback detection function priority is lower than 802.1x unauth interface, that does not fit D-Link request. (Known Issue)
9. The DUT IP ACL deny rule cannot drop DHCP packets when DHCP relay disable. (Known Issue)
10. The DUT DHCP client does not change Source IP to 0.0.0.0 to forward DHCP discover when reach DHCP server lease time. (Known Issue)
11. When DUT set to DHCP client mode then apply settings again via Web UI, the DUT does not forward DHCP request packets. (Known Issue)
12. When we delete already create DHCP relay Server entry from th4 to th1, the DUT will pop up error message. (Known Issue)
13. Run a Endurance test,when DUT uplink trunking port does not get DHCPV6. (Known Issue)
14. Cable Diagnostics test. When we test the link down port, the Cable Fault Distance display incorrectly. (Limitation)
15. When device boot up firmware code not ready,device interface not always keep in disable state, that will cause application issue. (Limitation)
16. EEE Compatibility issue. When DUT EEE function enable and link partner enable too. Then keep to ping DUT,sometimes we can found DUT linkdown linkup. (Limitation)
17. D-Link Lab request the device ping respond time need under 1ms, our device cannot fit this request. (Limitation)
18. The DUT Cable Diagnostics check unlink interface test result is different by different interface. (Limitation)

19. The DUT Multicast filter function does follow per-port settings, but Giga product is follow prt-VLAN settings. (Limitation)
20. The DUT will stop process trap to CPU control Packets when save configuration that will affect real network application. (Limitation)
21. The DUT Cable Diagnostics check unlink 90m Cat7 cable, test result port11 length range display 50m~80m and 80m~100m. (Limitation)
22. The DUT Cable Diagnostics check unlink 90m Cat7 cable, test result port115 length range display 100m~140m. (Limitation)

Related Documentation:

- DES-1210-28 Series User Manual
- DES-1210-28 Series Getting Started Guide