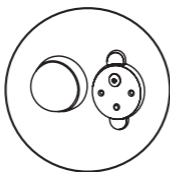
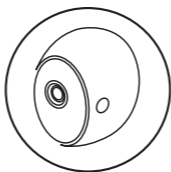


Wire-Free Battery Camera

Quick Start Guide

DCS-2800LH-EU







Minimum Requirements

To install this product, you will need:

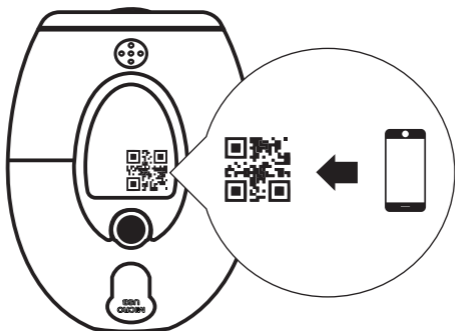
- 802.11 g/n wireless router
- Internet connection
- DCS-H100 hub (included in the DCS-2802KT-EU Wire-Free Camera Kit)
- The latest version of the mydlink™ app from your operating system's application store.
- The mydlink app is available for iPhone®, iPad® and Android™ devices. Please refer to the mobile app's store page to check whether your device is compatible.
- An e-mail account (required to register for mydlink service)

Note: Please assure that your phone is connected to the same Wi-Fi network on the router that you plan on plugging the hub into.



Sign In using your mydlink account and tap the icon at the top left, then tap **Add a Device** to start the setup wizard. Continue configuration in the app.

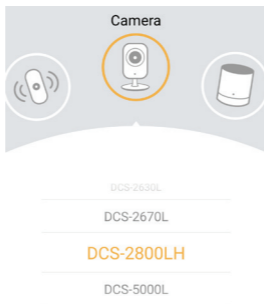
2



If you select "Yes" in the app, scan the QR code on the bottom of the camera. Continue configuration in the app.

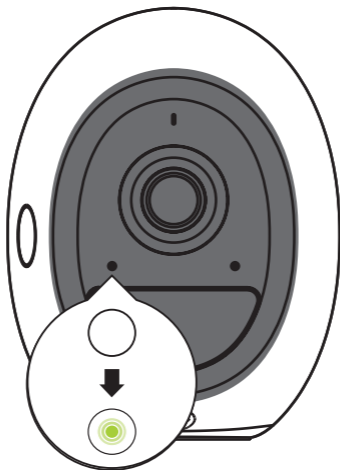
3

OR



If you select "No" in the app then select the **DCS-2800LH** camera from the menu. Continue configuration in the app.

4



Once at the camera is synced successfully, the LED on the camera will illuminate green to indicate it's currently connected.



Camera Placement Precautions

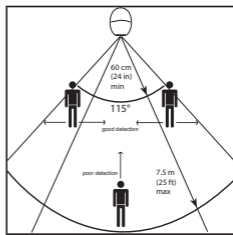
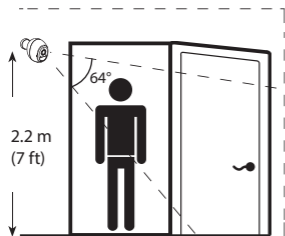
Caution:



Please make sure that the camera is not directly facing the sun or a source of heat.

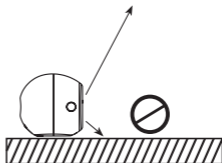
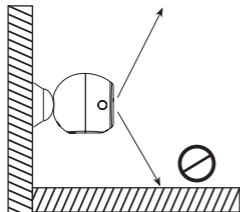
Proper Placement:

Place the camera at least 2.2 m (7 ft) or higher from the ground, and at least 20cm (7.8in) from the ceiling. The minimum recommended viewing distance for the motion detection is 60 cm (24 in), and the maximum is 7.5 m (25 ft).



Improper Placement:

Do not place the camera directly on top of a surface or in a spot where there is something directly below it, obstructing its view.



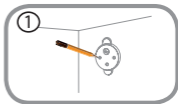


Camera Mounting Instructions

Snap Mount

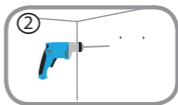
Step 1:

Place the baseplate at the desired location, assuring that it is at least 20cm from the ceiling. Make sure the screw is facing up and the holes are level. Use a pencil to mark the holes.



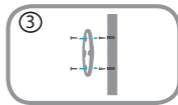
Step 2:

Using a 6 mm drill bit, drill two 25 mm deep holes over the pencil marks. For a plaster, drywall, or concrete wall, insert the plastic anchors to support the screws first.



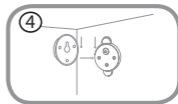
Step 3:

Place the baseplate over the holes. Use the supplied screws to attach the baseplate to the wall.



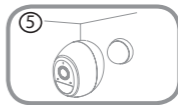
Step 4:

Align the large top screw with the largest hole on the snap mount. Slide the mount down to lock into place.



Step 5:

Attach the back of the camera to the mount. Adjust the angle as desired.





Support

For troubleshooting tips and more information, visit:
support.dlink.com