



Internet Camera Series
- DCS-2000 Internet Camera
- DCS-2100+ Wireless Internet Camera

Internet Camera With Integrated Web Server & Motion Detection

The D-Link Internet Camera is a security system that allows you to watch and listen remotely. This full-featured camera connects to an Ethernet or wireless network in a building or campus, and to broadband Internet to provide you with high-quality video and audio. Equipped with built-in Web server, micro-phone for listening, motion detected image recording, time-saving trigger event playback, alert message and powerful software for multi-camera monitoring and management, this camera provides a comprehensive system for convenient surveillance from both a local site or remotely from anywhere in the world.

Stand-alone System With Integrated Web Server

The DCS-2000 Internet Camera comes with a built-in CPU and Web server, providing a low-cost solution capable of solving demanding security and home/office monitoring needs. Its integrated Web server eliminates the need to connect the camera to a computer. Once installed, you use the built-in IP address to gain access to the camera, view live streaming video, and make changes to camera settings.

Web-based Remote Access

You can install your camera at home then view the images from anywhere in the world on a computer running Internet Explorer. Directly connected to the Internet without going through any computer, this camera is simple to install and easily integrates with your network environment. This makes this camera an ideal solution for remote surveillance away from home or office.

Multi-Camera Monitoring

Surveillance software is included to let you view up to 16 cameras on a single computer screen at one central location. Images can be recorded to your computer's hard drive manually or according to a pre-set schedule. The camera can be connected to external alarms and sensors, and you

can set up automated email alerts for sending through the Internet to alarm you instantly of all unusual happenings.

Motion Detected Recording

Instead of recording 24 hours a day, 7 days a week, images can also be recorded only when motions are detected. This saves disk space and eliminates the time wasted to view unnecessary images. Images can be directly archived straight to your computer hard drive or to a Network Attached Storage. Playback consumes little time with triggered event browsing and fast database searching.

High-Quality Video & Sound

The camera uses MPEG-4 Short Header Mode to stream live video at up to 30 frames per second for real-time viewing. A built-in high-quality microphone allows you to listen while watching live images.

With or Without Wireless LAN

Two models are available: a standard camera, and a wireless camera equipped with 802.11b+ enhanced 22Mbps wireless speed. Both models come with a 10/100Mbps Fast Ethernet port for connection to broadband Internet (via a home gateway router) or to a wired network in a building.

Features

- Stand-alone Internet camera with CPU & RAM, no need to attach to PC
- Simple to use with real-time monitoring
- Local access through Ethernet or wireless LAN
- Remote access from web browser
- Operates in Windows environments
- Surveillance software to control up to 16 cameras
- Motion detection triggered recording or scheduled recording
- Smart playback
- High compression ratio recording
- Connects to external devices for alarm-based event recording when trigger is activated
- Implemented for intruder detection with still image capture & e-mail notice
- Powerful software for image capture & video recording
- Web-based configuration

DCS-2000/2100+

Technical Specifications

Internet Camera

Camera Specifications

- 1/3 inch color CMOS sensor, interlace scan mode
- 24-bit RGB, 640 x 480 resolution
- Operating System: pSOS+ (real-time O.S.)
- Automatic Gain Control (AGC): 24dB
- Automatic Exposure (AE)
- Automatic White Balance (AWB)
- Electronics shutter: 1/60 ~ 1/15000 second
- Minimum illumination: 2.5lux @ f1.4
- Lens mounting: standard CS mount type lens, 6.0mm, f1.8

Image (Video Setting)

- H.263+ (MPEG4 short header mode) data compression
- Compression ratio: 5 levels
- 3 adjustable image sizes and quality intelligent motion detection windows with flexible bit rate
- Time stamp and text overlay

Audio

24Kbps

Video Resolution

- Up to 30 fps at 160 x 120
- Up to 30 fps at 320 x 240

General I/O

- 1 opto-isolated sensor input (max. 12VDC 50mA)
- 1 relay output (max. 24VDC 1A, 125VAC 0.5A)

Alarms

- Motion detection (activity detection)
- Periodical image transfers through e-mail and upload to a server using FTP

Port

10/100Mbps 10BASE-T/100BASE-TX Fast Ethernet

LED Indicators (bi-color status)

- System power and status indicators
- Network link and speed indicators

Networking Protocols

TCP/IP, HTTP, SMTP, FTP, Telnet, NTP, DNS, DHCP

Security

- Administrator and user group protected
- Password authentication

Management

Configuration and system log via Web browser and FTP application remotely

Software Update

Via TCP/IP network

Viewing System Requirement

- Protocol: standard Internet TCP/IP suite
- Operating system: Microsoft Windows XP, 2000, ME or 98SE
- Browser: Internet Explorer 5.x or above

Wireless LAN (model DCS-2100+ only)

Standard

802.11b+

Reception Sensitivity Nominal Temp Range

- 22Mbps: 10-5 BER @ -80 dBm minimum
- 11Mbps: 10-5 BER @ -79 dBm minimum
- 5.5Mbps: 10-5 BER @ -83 dBm minimum
- 1Mbps: 10-5 BER @ -89 dBm minimum

Frequency Range

2.4 - 2.4835 GHz

Modulation Techniques

- Direct Sequence Spread Spectrum (DSSS)
- Packet Binary Convolutional Coding (PBCC)

Data Rates

- 22 Mbps
- 11 Mbps
- 5.5 Mbps
- 2 Mbps
- 1 Mbps
- Auto fall-back

Data Rate & Modulation

- 22Mbps: PBCC
- 11Mbps: PBCC or CCK
- 5.5Mbps/1.5db: PBCC or CCK
- 2Mbps/3db: Barker

Operating Channels

- North America (FCC): 11
- Canada (DOC): 11
- Europe (ETSI): 13
- Japan (MKG): 14

Antennas

2 detachable 2dBi Gain antennas (reverse SMA connectors)

Transmitter Output Power

13dBm±2dB

Operating Range

- Up to 80 m indoors
- Up to 250 m outdoors

Data Encryption

64-bit, 128-bit, 256-bit WEP (Wired Equivalent Privacy)

Physical & Environmental

AC Power Input

Through 100 - 240 VAC, 50/60Hz external power supply unit

DC Power Input

12VDC 1.5A

Weight

Approx. 240 grams

Dimensions

135 (L) x 89 (W) x 57 (H) mm

Operating Temperature

5°C ~ 50°C

Storage Temperature

-10°C ~ 60°C

Humidity

20% ~ 90% non-condensing

Emission & Safety

- FCC Class B
- CE Class B
- LVD (En60950)



ACN 052 202 838

Ordering Information

Internet Camera

DCS-2000 With 10/100Mbps Fast Ethernet Port

DCS-2100+ With 10/100Mbps Fast Ethernet Port & 802.11b+ Wireless LAN

D-Link®

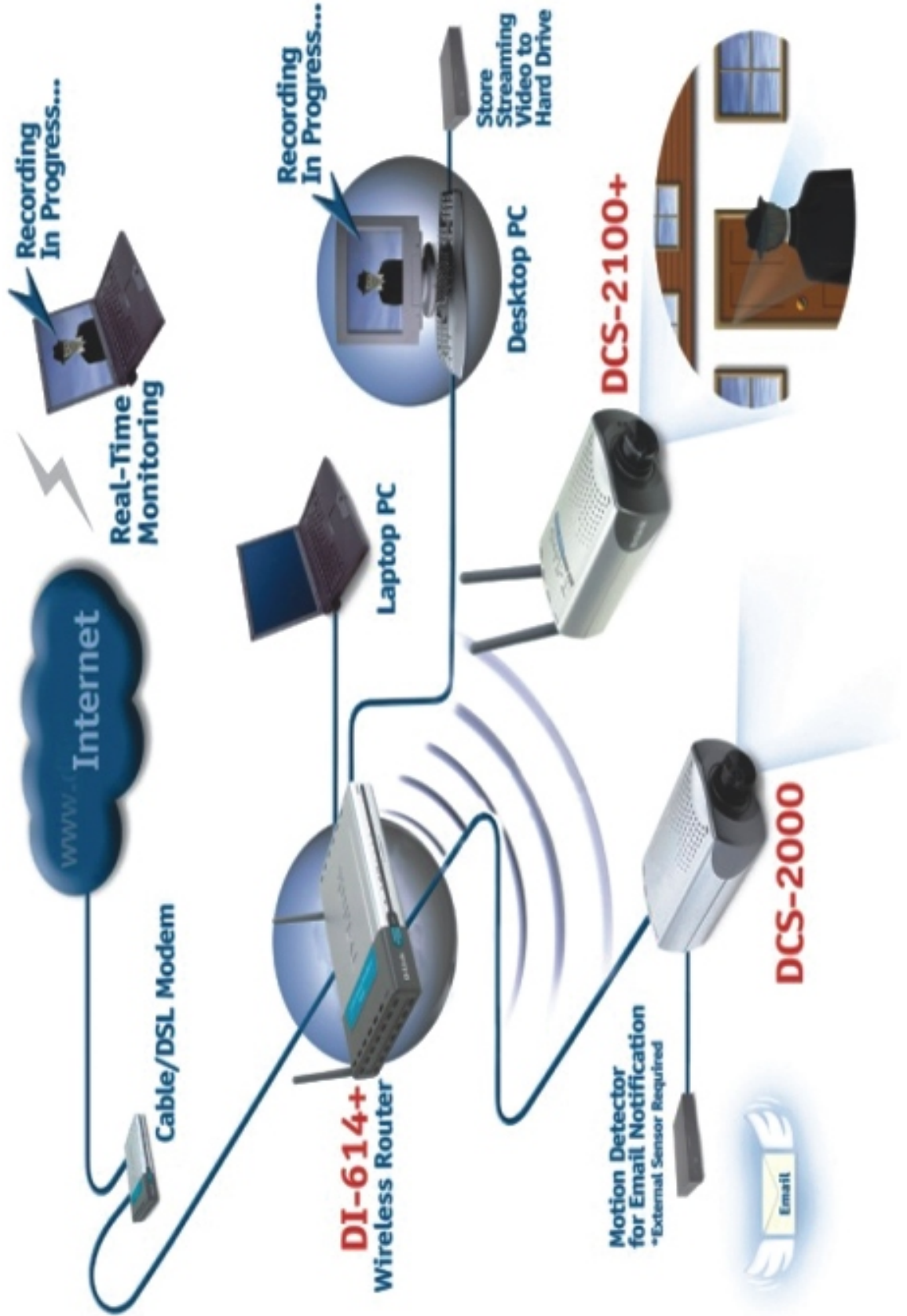
Specifications subject to change without prior notice.
D-Link is a registered trademark of D-Link Corporation/D-Link System Inc. All other trademarks belong to their proprietors.

U.S.A	TEL: 1-949-788-0805	FAX: 1-949-753-7033
Canada	TEL: 1-905-8295033	FAX: 1-905-8295095
Europe	TEL: 44-20-8731-5555	FAX: 44-20-8731-5511
Germany	TEL: 49-61 96-77990	FAX: 49-61 96-7799300
France	TEL: 33-1-30238688	FAX: 33-1-30238689
Benelux	TEL: 31-1 0-2045740	FAX: 31-1 0-2045880
Italy	TEL: 39-2-2900-0676	FAX: 39-2-2900-1723
Iberia	TEL: 34-93-4090770	FAX: 34-93-491 0795
Sweden	TEL: 46-(0)8564-61 900	FAX: 46-(0)8564-61 901
Norway	TEL: 47-22-309075	FAX: 47-22-309085
Denmark	TEL: 45-43-969040	FAX: 45-43-424347
Finland	TEL: 358-9-2707-5080	FAX: 358-9-2707-5081
Singapore	TEL: 65-6774-6233	FAX: 65-6774-6322
Australia	TEL: 61-2-8899-1800	FAX: 61-2-8899-1868
Japan	TEL: 81-3-5434-9678	FAX: 81-3-5434-9868
China	TEL: 86-1 0-851 8-2533	FAX: 86-1 0-851 8-2250
India	TEL: 91-22-652-6696	FAX: 91-22-652-891 4
Egypt	TEL: 202-62-4461 5	FAX: 202-62-44583
UAE	TEL: 97-1 4-391 6480	FAX: 97-1 4-3908881
Turkey	TEL: 90-21 2-335-2525	FAX: 90-21 2-335-2500
Ireal	TEL: 972-9-971 5700	FAX: 972-9-971-5601
Chile	TEL: 56-2-232-31 85	FAX: 56-2-232-0923
Brasil	TEL: 55-11-3094-291 0	FAX: 55-11-3094-2921
South Africa	TEL: 27(0)1 266-521 65	FAX: 27(0)1 266-521 86
Russia	TEL: 7-095-737-3389	FAX: 7-095-737-3390
Taiwan	TEL: 886-2-291 0-2626	FAX: 886-2-291 0-1 515
D-Link Corp.	TEL: 886-2-291 6-1600	FAX: 886-2-291 4-6299

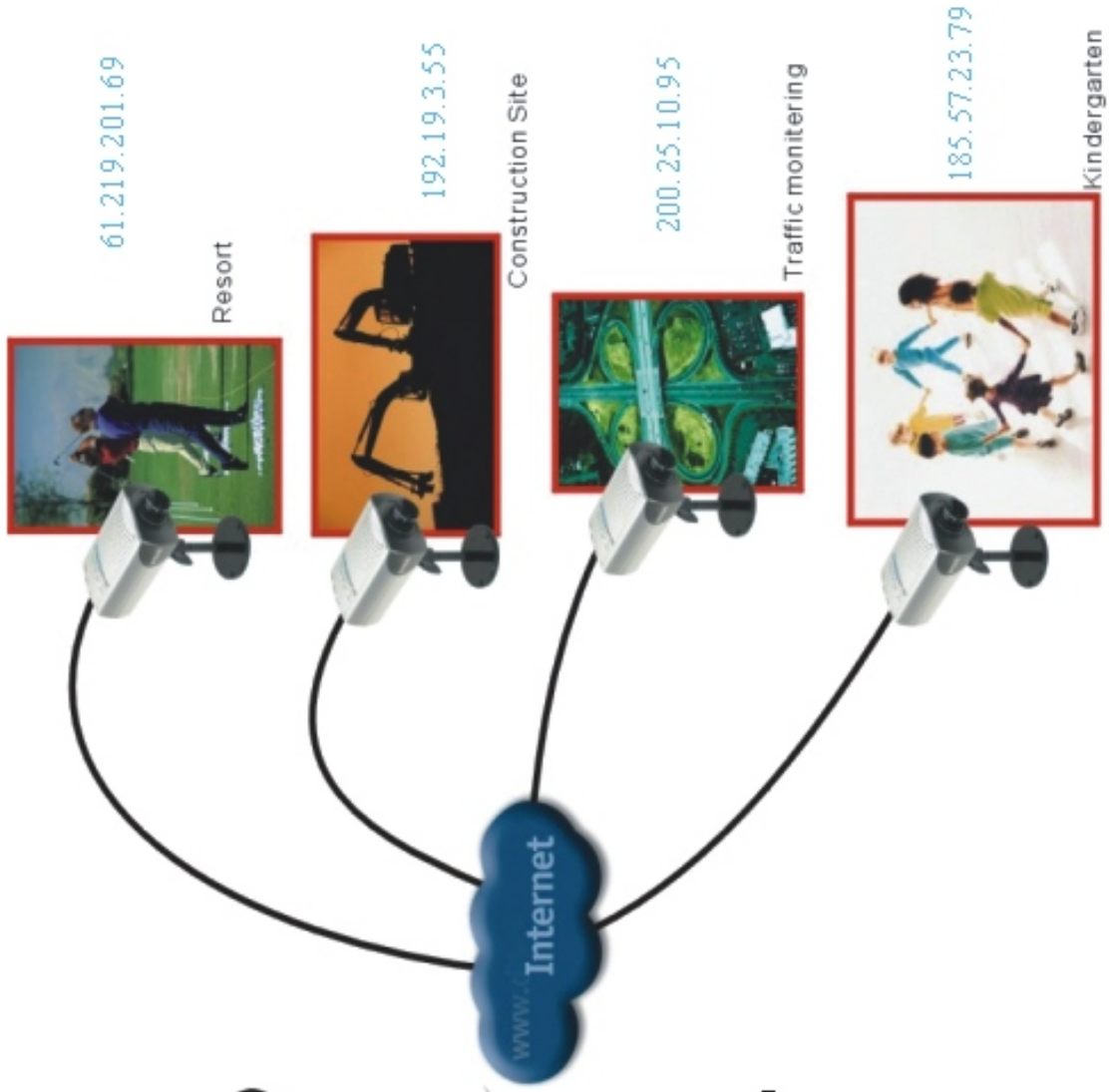


RECYCLABLE
Rev. 01 (May 2003)
Printed in Taiwan

Typical Installation DCS-2000/DCS-2100+



View Everywhere via Internet



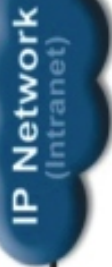
Real-time View (Internet)



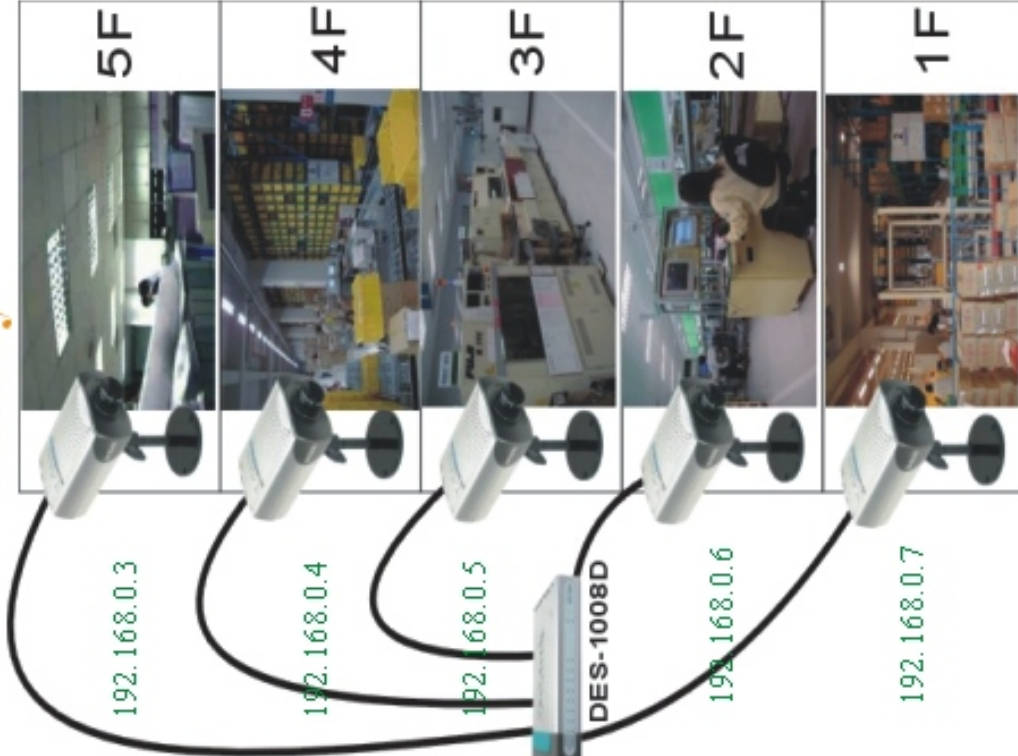
- (1) HTTP request to 61.219.201.69
- (2) HTTP request to 192.19.3.55
- (3) HTTP request to 200.25.10.95
- (4) HTTP request to 185.57.23.79

View Remote Office via VPN

Office Supervisor



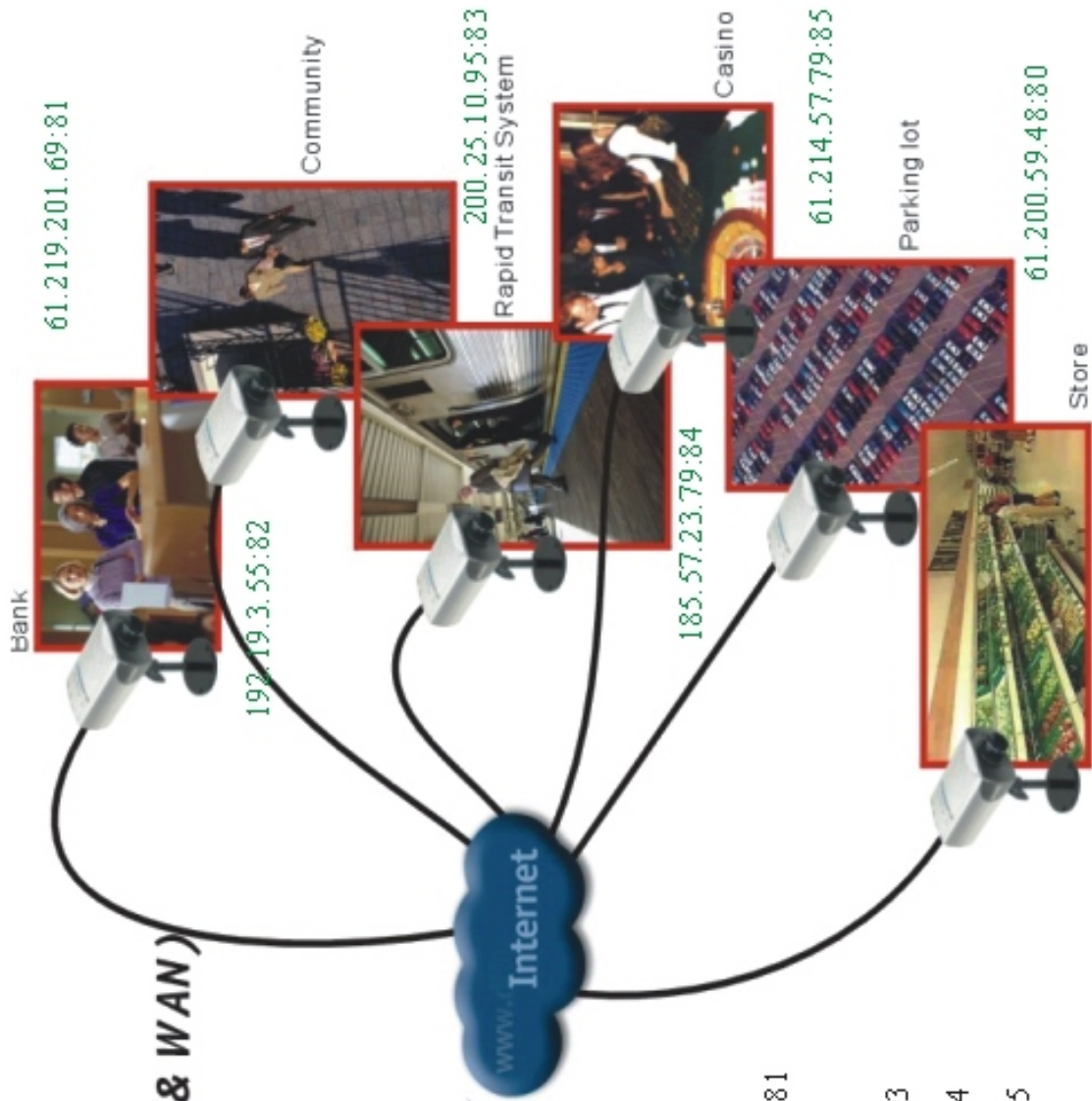
Translates
61.219.201.69:80~84
to 192.168.0.3~7



Factory

- (1) HTTP request to 61.219.201.69
- (2) HTTP request to 61.219.201.69:81
- (3) HTTP request to 61.219.201.69:82
- (4) HTTP request to 61.219.201.69:83
- (5) HTTP request to 61.219.201.69:84

Surveillance System

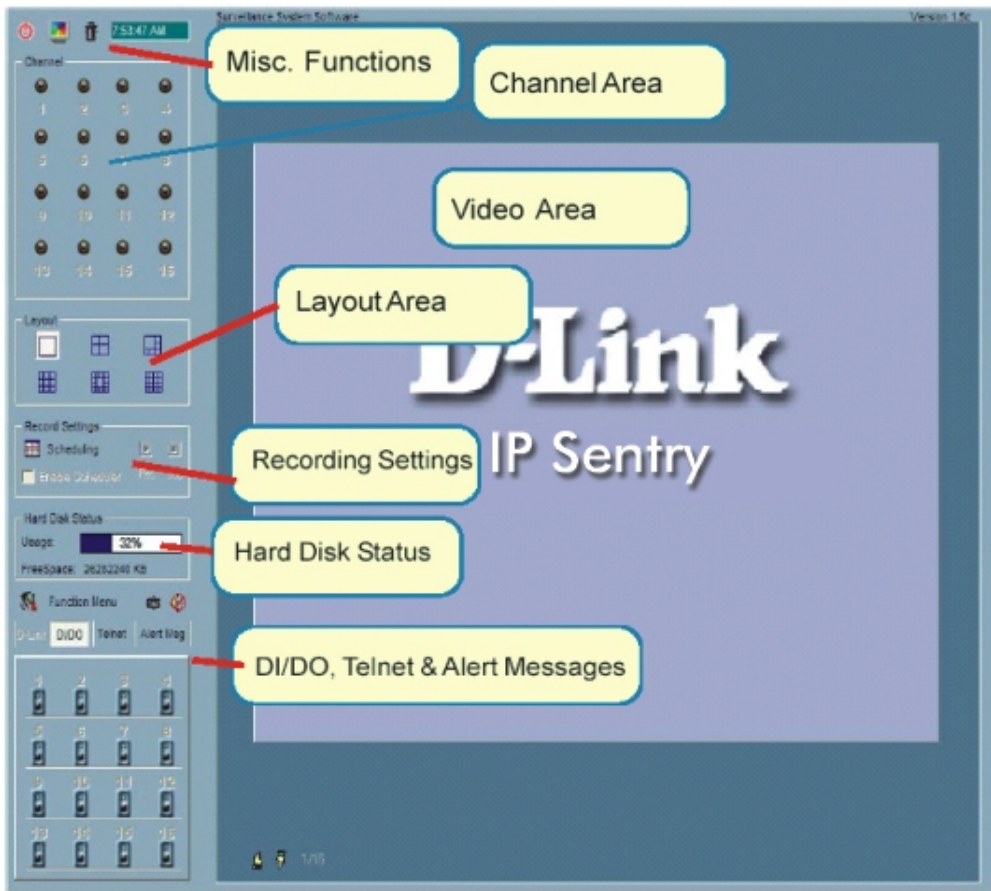


Security & Recording (LAN & WAN)



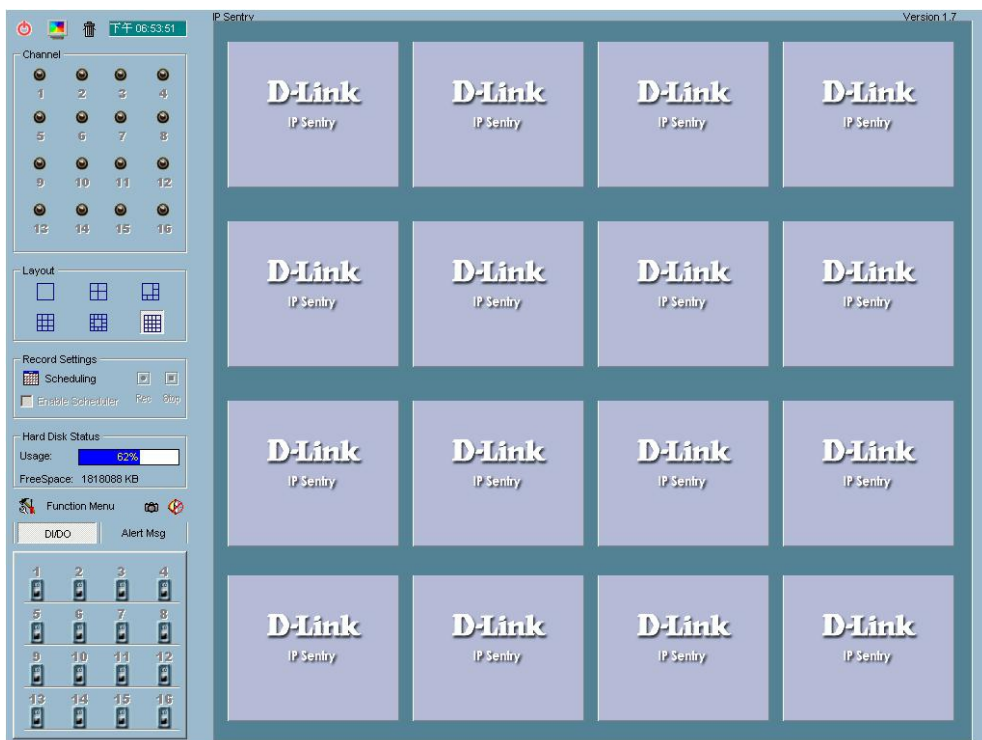
- (1) HTTP request to 61.219.201.69:81
- (2) HTTP request to 192.19.3.55:82
- (3) HTTP request to 200.25.10.95:83
- (4) HTTP request to 185.57.23.79:84
- (5) HTTP request to 61.214.57.79:85
- (6) HTTP request to 61.200.59.48

IP Sentry Surveillance Software Outstanding Function



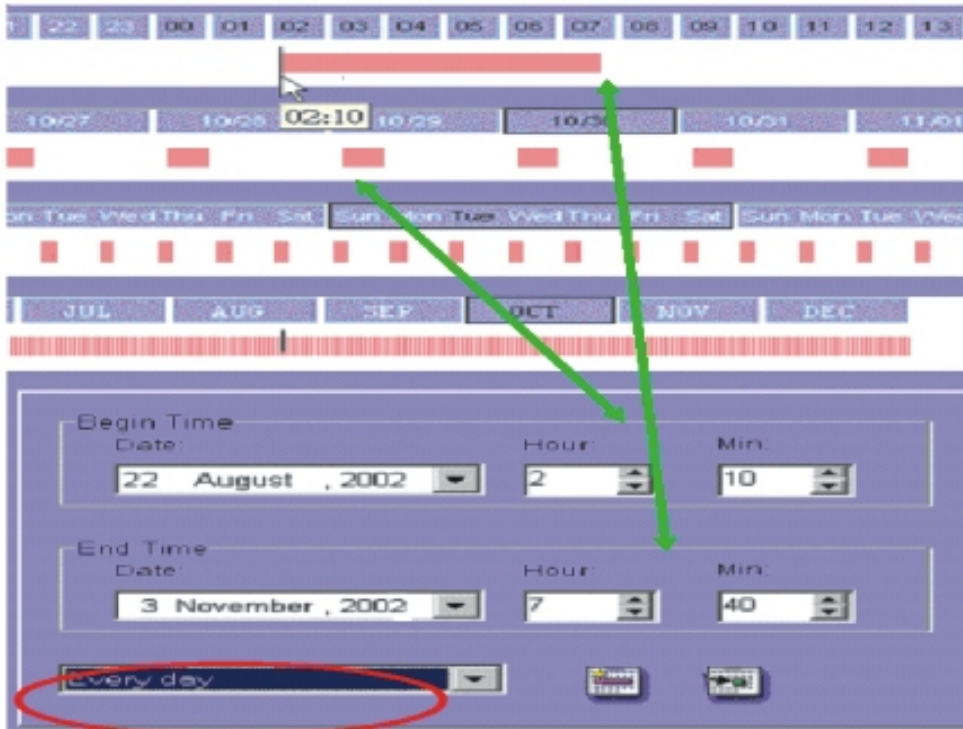
Channel Display (6 layouts)

- Max 16 views



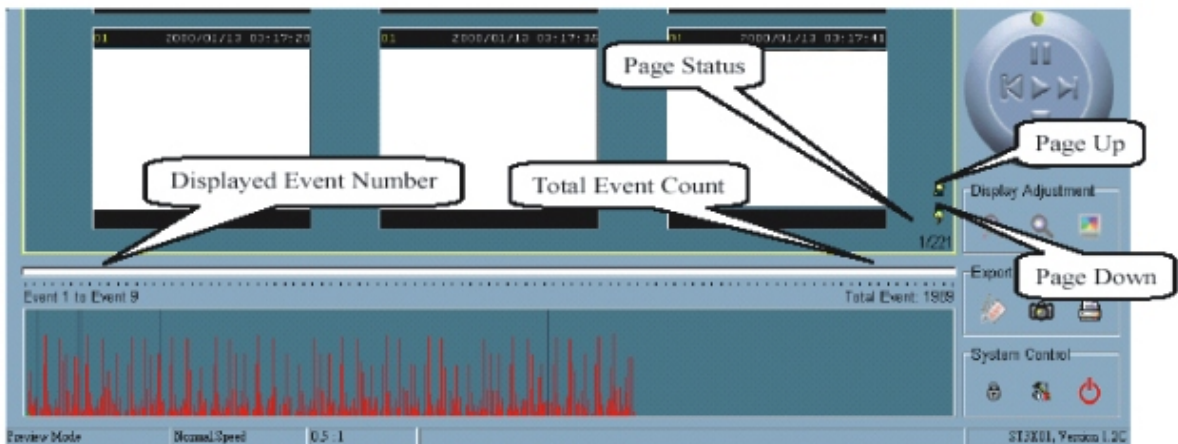
Recording Mode

- Manual Control, event driven, scheduled



Playback scheme

- Date, Time interval, and event triggering with preview for every camera



Playback controls

- Play, Stop, Pause, Fast Forward, Slow Forward, Pull-bar, Zoom in, Zoom out

