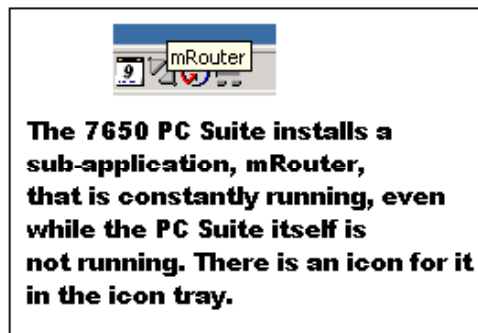


1 Can I use the Nokia 7650 PCSuite with BTW?

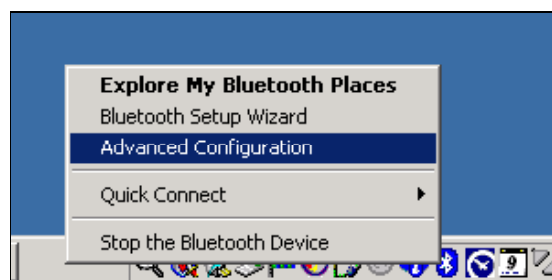
Yes you can, but it does require some configuration on the PCSuite software before BTW will correctly work with the Nokia 7650. The following directions describe how-to setup the PCSuite configuration so that it can be used with the BTW (Bluetooth for Windows) software.

1.1 SETUP AND CONFIGURATION

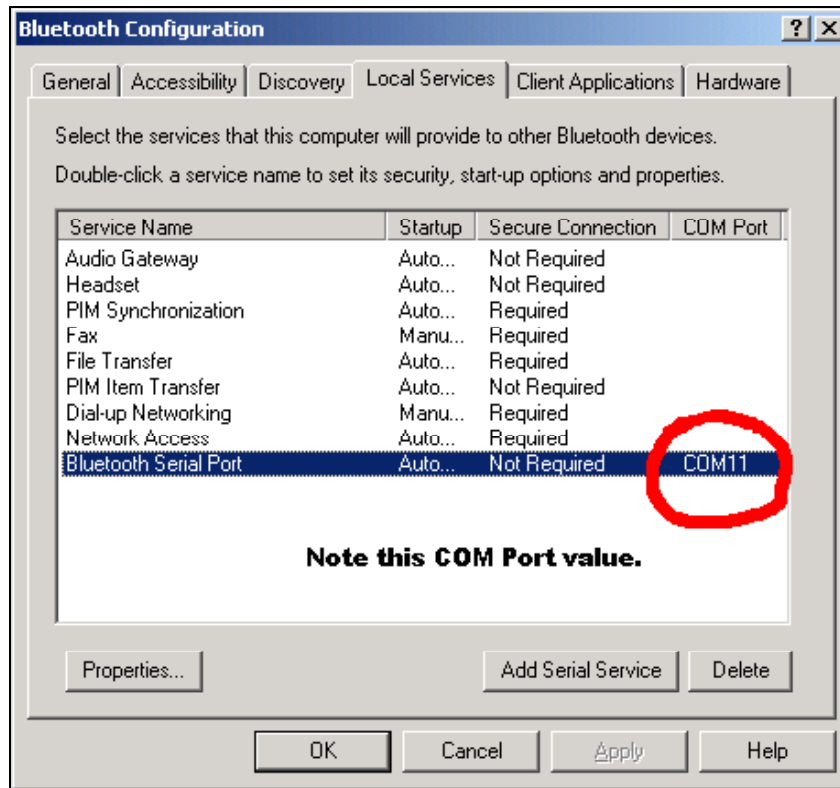
1. Make sure BTW software is installed on your PC and working.
2. Install Nokia PCSuite Software for the Nokia 7650. After installation has completed you can verify that it was successful by checking the system tray for the following icon.



3. Before you can configure the PCSuite you must check to see what Bluetooth Serial Port to configure the PCSuite to run against. Right-click on the Bluetooth icon located in the system tray and the following menu will appear:

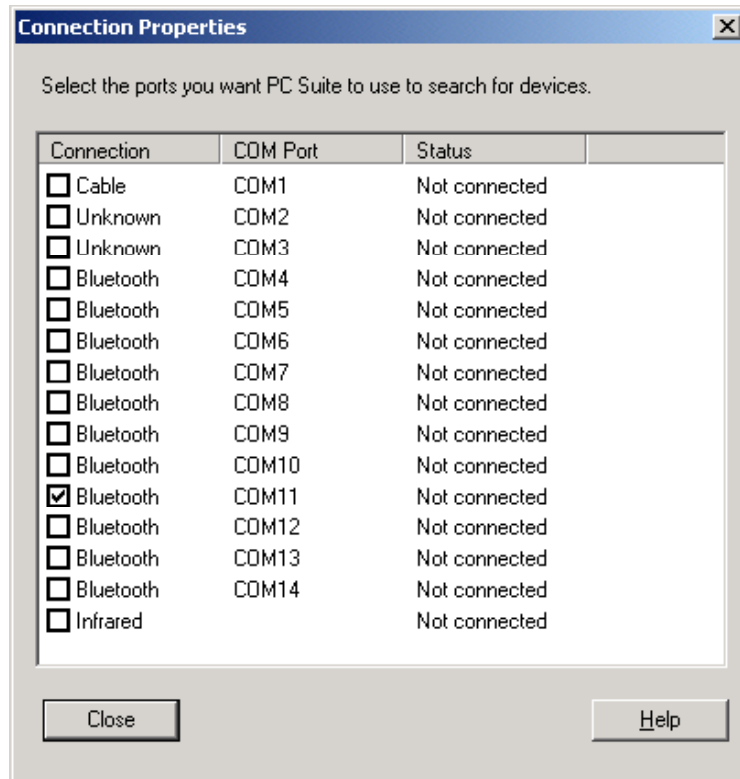


4. Select the “Advanced Configuration” option as highlighted in the diagram above. The following Dialog should now appear; this is the Bluetooth Configuration Dialog.



5. Click on the “Local Services” tab and locate the “Bluetooth Serial Port” service in the list as shown above. Please note the COM Port this service is using, in this case, COM11. This will come in useful when setting up the PCSuite configuration. Once you have noted the COM Port value, you can just click the “Cancel” button to exit the Bluetooth Configuration Dialog.

- Right click on the PCSuite Icon that is described in step 2, above. Select the “Properties” option from the menu. The following Dialog should then appear:



- The PCSuite “Connection Properties” will display of list of all COM Ports located on the system. Check the COM Port that you found and noted in the Bluetooth Configuration in step 5. Now click the “Close” button. We are now ready to attempt a Serial Port connection to the Nokia 7650 Bluetooth Phone using BTW.

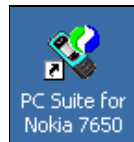
1.2 INITIATING A SERIAL PORT CONNECTION TO THE NOKIA 7650.

The key to being able to connect to the phone is to understand how the 7650 will react when you try to make a Bluetooth serial port connection from another device. When you initiate the connection to the phone, you are using your Bluetooth Client Serial Port. Once the initial connection has been made with the Nokia 7650, the phone quickly obtains your devices Bluetooth Address, disconnects the SPP connection, and then attempts to initiate a new connection to your device. If the new connection is successful then the phone will be connected via SPP on your local Bluetooth Serial Port. Using the WIDCOMM BTW Software do the following:

1. Initiate a Bluetooth Serial Port connection to the 7650 from your PC.
 - the 7650 may ask for a passcode, if it does enter a passcode, for example: 1234
 - the PC will ask for the same passcode
2. BTW will attempt to make a Bluetooth Serial Port connection very briefly to the Nokia phone. You may not even notice it. The BTW software may come back with a message that it is trying to assign COM 0 to the phone. Click "OK"

Note: An error may appear after clicking the "OK" button, just ignore it.

3. The Nokia 7650 will now attempt to initiate a connection back to the PC that just tried to connect to it. Again, there may be authentication needed so enter a passcode on both sides if needed.
4. After the Nokia 7650 has made a connection back to the PC, it should be using the Bluetooth Serial Port configured in the mRouter application as shown in section 1.1, step 6.
5. You can now launch the PCSuite Application using the icon installed on the Desktop. The PCSuite icon is shown below. After launching the application just follow the rest of the directions for using the PCSuite software.



NOTE: Even with the PC Suite program itself closed, you can, for example, double click on a "*.sis" file while mRouter is connected, it will automatically start installing it into your Nokia 7650. (a SIS file is a Symbian Installation File) You can download different 3rd party programs and install them in your phone via Bluetooth.

2 Can I use the Nokia 6310i PCSuite with BTW?

No, you can't. The PCSuite software, version 4.81 that comes with the Nokia 6310i phone is an older edition of the software than used with the Nokia 7650. In this edition the PCSuite was **ONLY** designed to work with the Digianswer Bluetooth stack, thus the WIDCOMM BTW software is unable to interact with this version of the PCSuite. You can however still use the software to communicate with the phone. You will need to obtain a Bluetooth device that is supported by the Digianswer Bluetooth Stack. For a list of compatible Bluetooth devices that will work with this Bluetooth Stack you may need to contact Nokia support.

3 Can BTW be used to setup a SPP connection to send Modem AT commands to the Nokia 6310 phone via Bluetooth?

Yes, even though you can't use the Nokia PCSuite with WIDCOMM BTW software, you can still use BTW to connect to the phone via the Serial Port Profile (SPP). To setup a SPP connection and to communicate with the phone via AT commands use the directions shown below:

3.1 CREATE SPP CONNECTION WITH NOKIA 6310 PHONE

- Open "My Bluetooth Places – Entire Bluetooth Neighborhood"
- Locate the Nokia 6310 Phone icon located in the list of device icons that are displayed
- Right Click this icon and select the "Pair Device" option. You will be prompted to enter a pin code, example 123. One the Nokia phone you will be prompted to do the same, enter the same pin code.
- Do Service Discovery to find the Nokia Phones Serial Port service.
- Double-click the Serial Port icon to make a connection. After the connection has been established, you should note the COM Port value of the connection.

3.2 SENDING MODEM AT COMMANDS TO THE NOKIA 6310 PHONE

NOTE: The directions in section 3.1 must be completed before continuing.

- Startup a legacy COM Port application such as Hyper Terminal and connect to the COM Port noted from section 3.1.
- Once connected you can send AT commands to the phone. An example of sending AT commands would be: ATDT 5555555. This command will send the phone number 5555555 to the phone for dialing. The number should appear on the phone screen just before it is dialed.

4 Can I use the Nokia 8910 PCSuite with BTW?

No, you can't. The PCSuite software, version 4.81 that comes with the Nokia 8910 phone is an older edition of the software than used with the Nokia 7650. In this edition the PCSuite was **ONLY** designed to work with the Digianswer Bluetooth stack, thus the WIDCOMM BTW software is unable to interact with this version of the PCSuite. You can however still use the software to communicate with the phone. You will need to obtain a Bluetooth device that is supported by the Digianswer Bluetooth Stack. For a list of compatible Bluetooth devices that will work with this Bluetooth Stack you may need to contact Nokia support

5 Can I use the Nokia 7650 PCSuite to communicate with the 6310 via BTW?

No, the 7650 PC Suite cannot be used with 6310/ 6310i due to large differences in phone SW. The 6310/i builds on Nokia series 30 while 7650 builds on series 60 (Symbian OS). These two Nokia platforms are not compatible.

The mRouter from 7650 PC Suite SW can be used to maintain contact between 6310 and Widcomm bluetooth. The 6310 PC Suite cannot use this mRouter for connection to the phone.

6 Can I send images from the Nokia Phone to BTW?

Yes, but it depends on what version of the WIDCOMM BTW software you have installed. Versions prior to BTW 1.2.2.15 did not have support for receiving image files from the Nokia Phone.

In versions 1.2.2.15 and newer you must set the following registry setting to enable BTW to receive image files.

Registry Key:

HKLM\SOFTWARE\WIDCOMM\BtConfig\Services\004\AllowOther

Registry Key Value:

0 – Ability to receive image files is disabled.

1 – Ability to receive image files is enabled

In version 1.3.x, this can be configured through the Bluetooth Configuration Panel.

1. Right-click on the Bluetooth Icon in the system tray and select “Advanced Configuration” option.
2. Click on the “Local Services” tab and highlight the “PIM Item Transfer” option from the list.
3. Click the “Properties” button and set option “Allow Other Types” to “Save To Folder”.
4. Specify a path to save the items to and then click the “Apply”, then “OK” buttons.
5. Exit the Bluetooth Configuration Panel; you should now be able to receive images from Nokia phone.