

1 Can I use the Nokia 3650 PCSuite with BTW?

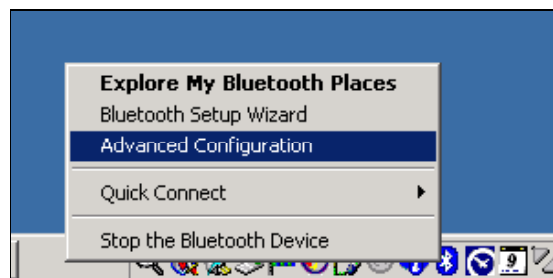
Yes you can, but it does require some configuration on the PCSuite software before BTW will correctly work with the Nokia 3650. The following directions describe how-to setup the PCSuite configuration so that it can be used with the BTW (Bluetooth for Windows) software.

1.1 SETUP AND CONFIGURATION

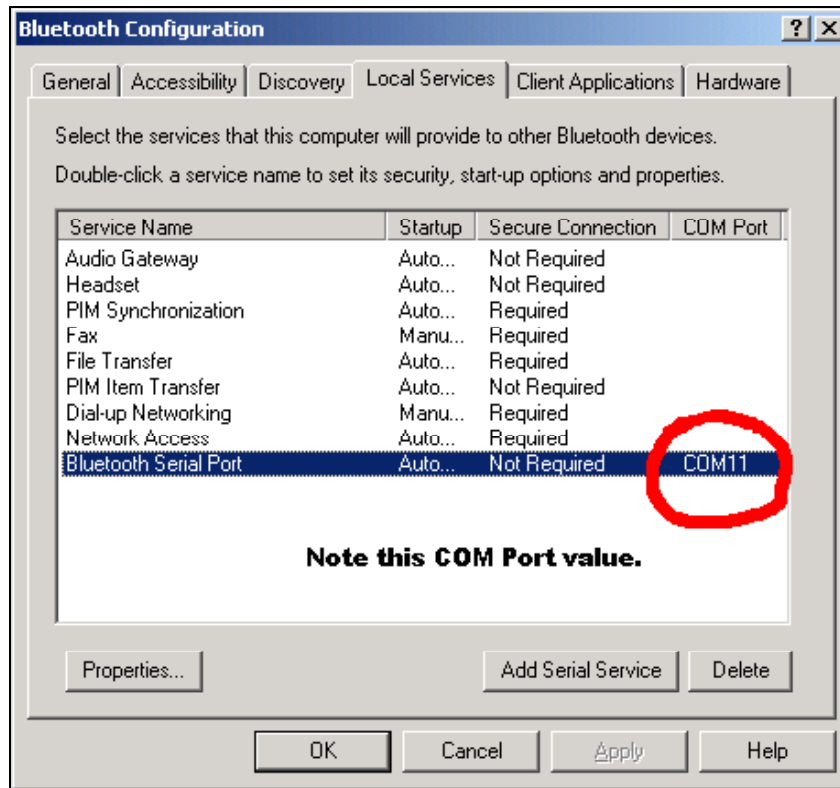
1. Make sure BTW software is installed on your PC and working.
2. Install Nokia PCSuite Software for the Nokia 3650. After installation has completed you can verify that it was successful by checking the system tray for the following icon.



3. Before you can configure the PCSuite you must check to see what Bluetooth Serial Port to configure the PCSuite to run against. Right-click on the Bluetooth icon located in the system tray and the following menu will appear:

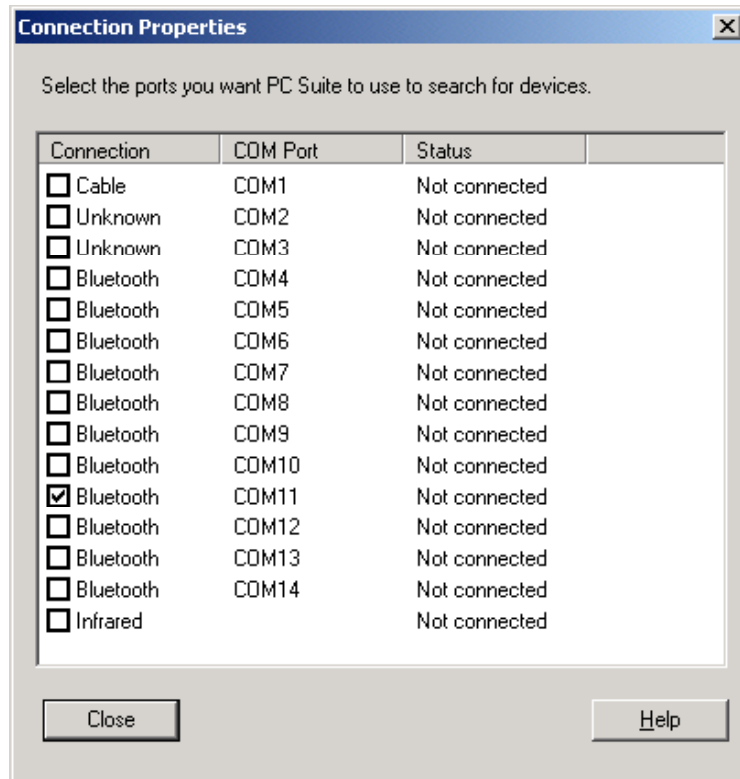


4. Select the “Advanced Configuration” option as highlighted in the diagram above. The following Dialog should now appear; this is the Bluetooth Configuration Dialog.



5. Click on the “Local Services” tab and locate the “Bluetooth Serial Port” service in the list as shown above. Please note the COM Port this service is using, in this case, COM11. This will come in useful when setting up the PCSuite configuration. Once you have noted the COM Port value, you can just click the “Cancel” button to exit the Bluetooth Configuration Dialog.

- Right click on the PCSuite Icon that is described in step 2, above. Select the “Properties” option from the menu. The following Dialog should then appear:



- The PCSuite “Connection Properties” will display of list of all COM Ports located on the system. Check the COM Port that you found and noted in the Bluetooth Configuration in step 5. Now click the “Close” button. We are now ready to attempt a Serial Port connection to the Nokia 3650 Bluetooth Phone using BTW.

1.2 INITIATING A SERIAL PORT CONNECTION TO THE NOKIA 3650.

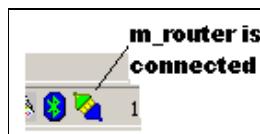
The key to being able to connect to the phone is to understand how the 3650 will react when you try to make a Bluetooth serial port connection from another device. When you initiate the connection to the phone, you are using your Bluetooth Client Serial Port. Once the initial connection has been made with the Nokia 3650, the phone quickly obtains your devices Bluetooth Address, disconnects the SPP connection, and then attempts to initiate a new connection to your device. If the new connection is successful then the phone will be connected via SPP on your local Bluetooth Serial Port. Using the WIDCOMM BTW Software do the following:

1. Initiate a Bluetooth Serial Port connection to the 3650 from your PC.
 - the 3650 may ask for a passcode, if it does enter a passcode, for example: 1234
 - the PC will ask for the same passcode
2. BTW will attempt to make a Bluetooth Serial Port connection very briefly to the Nokia phone. You may not even notice it. The BTW software may come back with the following message. Just click "OK"

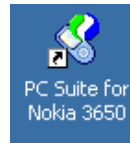


Note: An error may appear after clicking the "OK" button, just ignore it.

3. The Nokia 3650 will now attempt to initiate a connection back to the PC that just tried to connect to it. Again, there may be authentication needed so enter a passcode on both sides if needed.
4. After the Nokia 3650 has made a connection back to the PC, it should be using the Bluetooth Serial Port configured in the mRouter application as shown in section 1.1, step 6. The m_Router icon will change to look like the following when a successful connection has been made.



5. You can now launch the PCSuite Application using the icon installed on the Desktop. The PCSuite icon is shown below. After launching the application just follow the rest of the directions for using the PCSuite software.

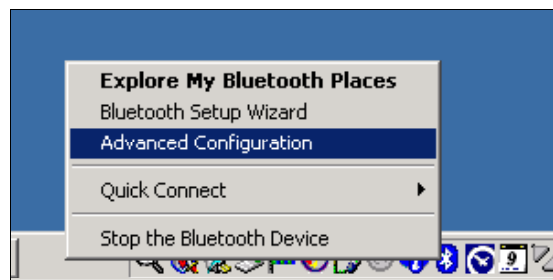


NOTE: Even with the PC Suite program itself closed, you can, for example, double click on a ".sis" file while mRouter is connected, it will automatically start installing it into your Nokia 3650. (a SIS file is a Symbian Installation File) You can download different 3rd party programs and install them in your phone via Bluetooth.

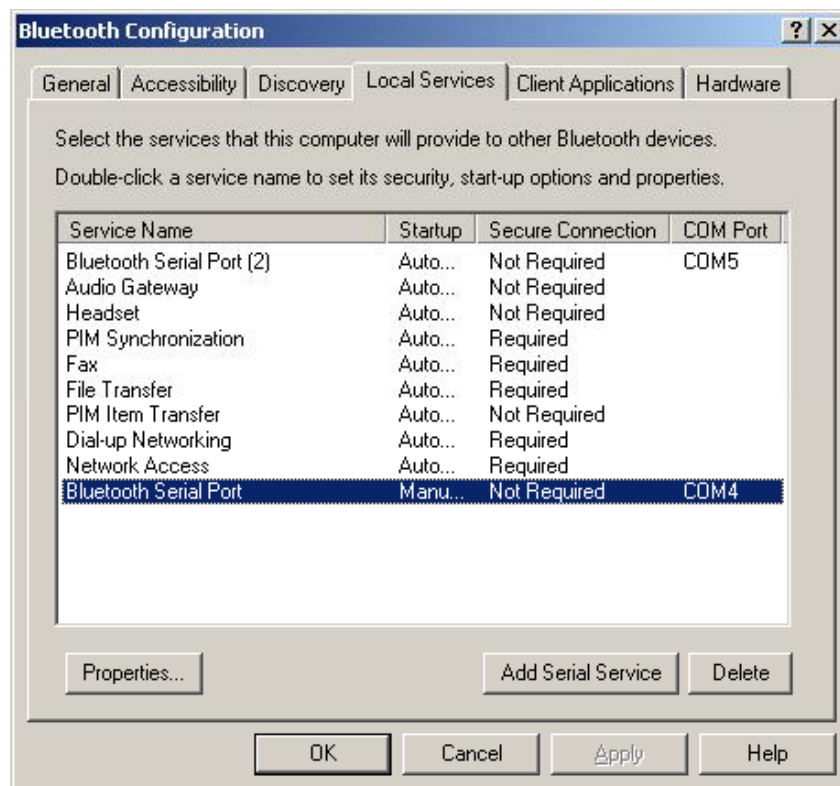
1.3 WHAT DO I DO IF THE M_ROUTER SOFTWARE DOES NOT CONNECT TO THE INCOMING CONNECTION?

This has happened on occasion where the m_router software will not detect that the Nokia 3650 phone has reconnected to the PC via Bluetooth. To get around this please do the following:

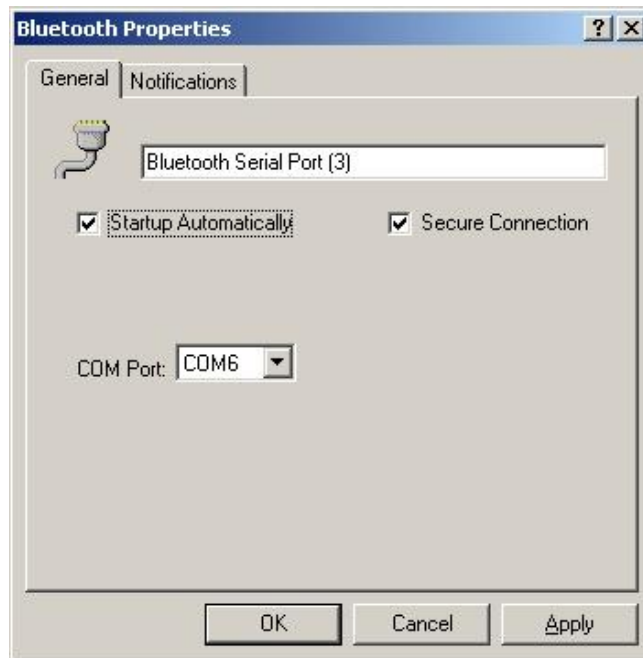
1. Add a new Bluetooth Serial Port in the WIDCOMM Bluetooth Configuration. Right-click on the Bluetooth icon located in the system tray and the following menu will appear:



2. Select the “Advanced Configuration” option as highlighted in the diagram above. The following Dialog should now appear; this is the Bluetooth Configuration Dialog.



3. Click the “Add Serial Service” button to add a new serial port. The following dialog will appear. Make sure you check the “Startup Automatically” checkbox. After you have clicked the “OK” button then it should resemble the diagram above. The COM Port assignments may be a little different. The last thing to do is disable the other COM Port. To do this double-click on the entry from the list above and then uncheck the “Startup Automatically” checkbox.



4. Once the new COM Port has been created you can continue by following the directions above in section 1.1 part 6, to complete the configuration. Then follow section 1.2 for creating the Serial Port connection.

