

SharePort[™]

User Manual

Business Class Networking

Table of Contents

D-Link SharePort™	3
Introduction.....	3
System Requirements	3
Installation	4
Install the D-Link SharePort	4
Set up the D-Link Router	4
Enable Network USB on the D-Link Router.....	5
Connect USB Devices to the D-Link Router	5
Open the D-Link SharePort	6
Virtually Connect and Disconnect a USB Device	7
When the USB Device is a Multifunction Printer.....	8
When You Want to Scan	11

D-Link SharePort™

Introduction


The D-Link SharePort™ allows you to share USB devices such as external storage drives and multifunction printers with other users across your network by simply connecting the device to select D-Link routers. This allows you to use an external storage drive or printer located across your network as if it were connected to your local PC.

System Requirements



- Windows® 2000/2003/XP/Vista/7® 32-bit/64-bit
- Pentium 3 800MHz or better
- 256MB RAM or higher
- CD-ROM drive
- A compatible D-Link router

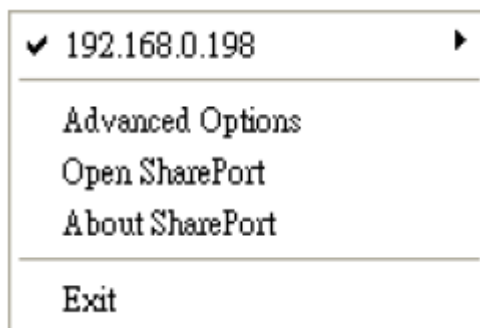
Installation

Install the D-Link SharePort


1. Insert the CD-ROM into your computer.
2. Follow the on-screen instructions.
3. The  icon should appear in the System Tray at the lower-right corner on the desktop.

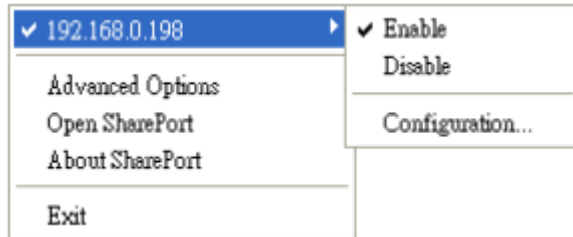
Set up the D-Link Router

1. Connect the D-Link Router to the network.
2. Power on the D-Link Router.
3. Double-click on the  icon to open the D-Link SharePort.
4. Right-click on  in the System Tray at the lower-right corner on your Windows Desktop. A window pops up to display the IP address of the D-Link Router.



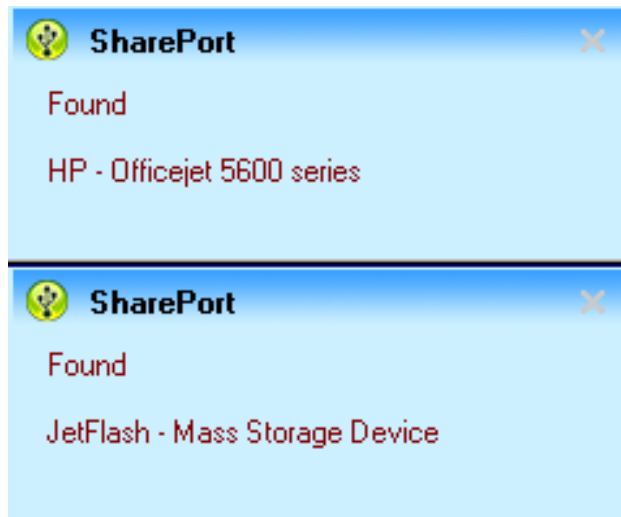
Enable Network USB on the D-Link Router

1. Click on the D-Link Router.
2. Click on **Enable**.
3. The  icon in the Windows System Tray should change to a  icon.




Connect USB Devices to the D-Link Router

The D-Link SharePort automatically detects for each connected USB device. A window will pop up for each detected USB device.

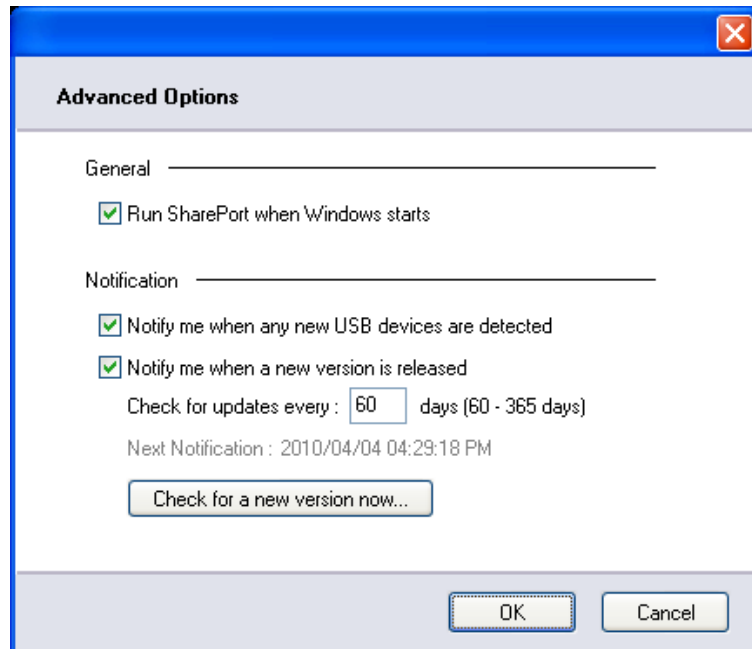


Open the D-Link SharePort

1. Right-click on the  icon.
2. Click on **Open SharePort**.
3. The D-Link SharePort displays the connected USB devices on the network.



Advanced Options can be set by clicking on **Advanced Options**.



Virtually Connect and Disconnect a USB Device

Move the cursor to **Waiting to Connect** and click on **Connect** to virtually connect a USB device.



The D-Link SharePort displays which user is virtually connecting this USB device.



Move the cursor to **Use By (Owner)** and click on **Disconnect** to virtually disconnect the USB device.

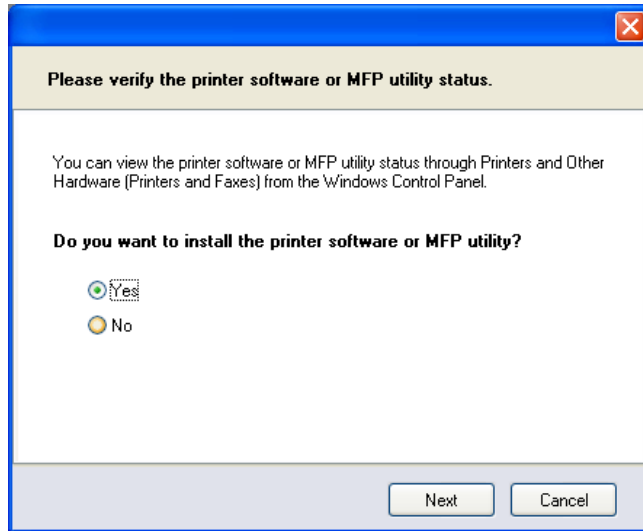


When the USB Device is a Multifunction Printer

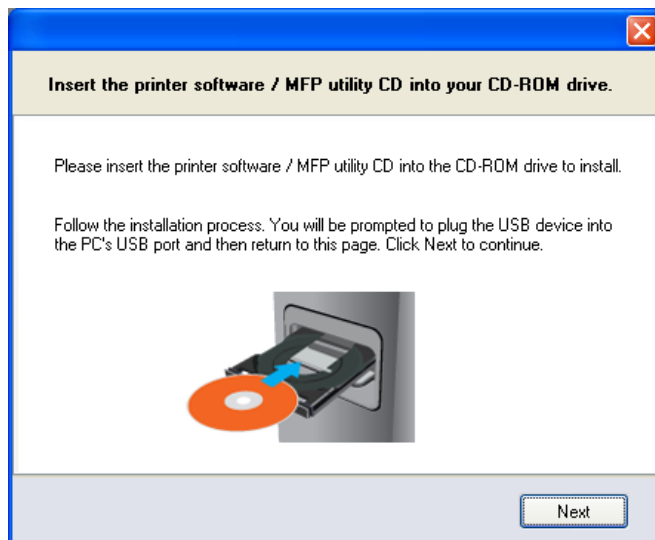
1. Move the cursor to **Waiting to Connect** and click on **Manage Device**.



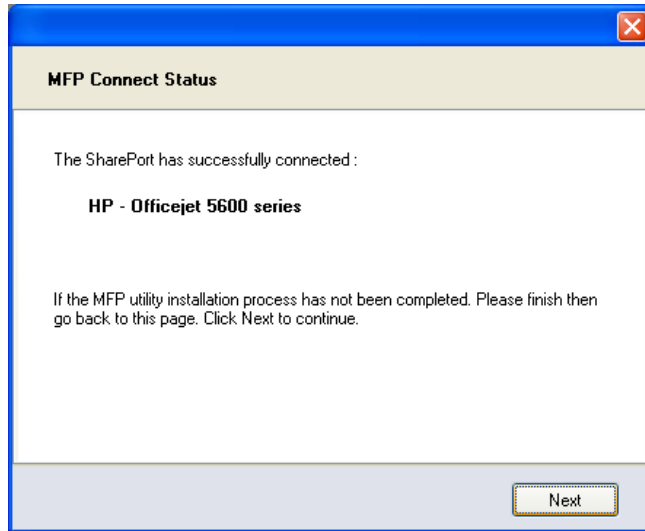
2. Click **Yes** on the question “Do you want to install the printer software or MFP utility?”



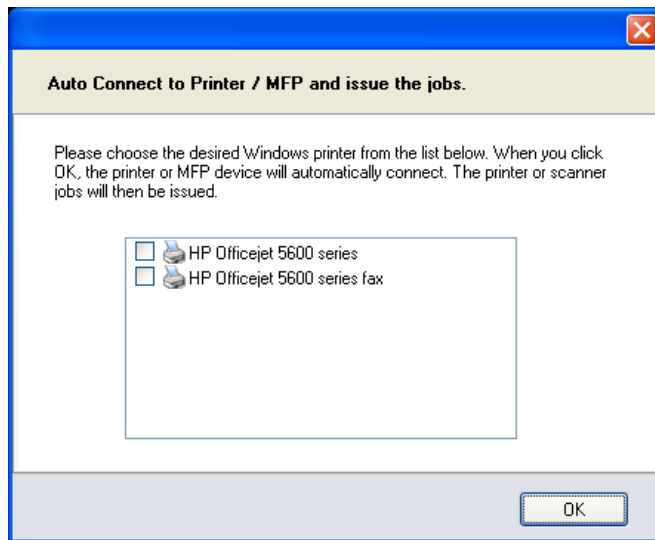
3. Insert the CD-ROM of the multifunction printer and follow the instructions to install the multifunction printer’s driver. When the installation process prompts you to connect the multifunction printer to your PC, click **Next**.



-
4. The D-Link SharePort virtually connects to this multifunction printer. Click **Next**.



5. Choose the printer driver that you want D-Link SharePort to auto-connect when you print.



When You Want to Scan

Move the cursor to **Available for Use** and click on **Scan Now**.

