

User Manual

SharePort Manual for MAC

D-Link SharePort	3
System Requirement	3
Installation and Guide	4
Install	4
Setup	4
Enable Network USB on the D-Link Router	5
Connect USB Devices on the D-Link Router	5
Open D-Link SharePort	6
Virtual Connect and Disconnect	7
Using a Multifunctional Printer	8
Using a Scanner	10


D-Link SharePort

System Requirement



- Mac 10.5, 10.6, 10.7, 10.8
- 256MB RAM or higher
- CD-ROM drive

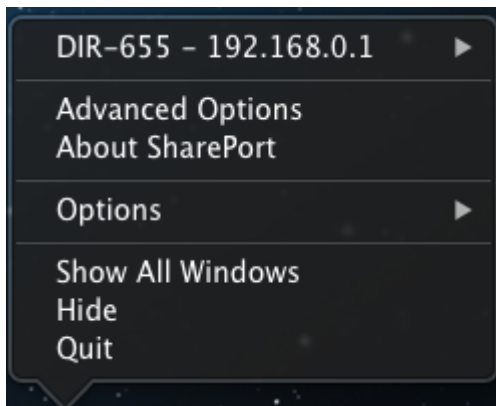
Installation and Guide

Install



- Insert the CD-ROM into your computer
- Follow the on-screen instructions
- The  icon should appear in the System Tray at dock on the desktop.

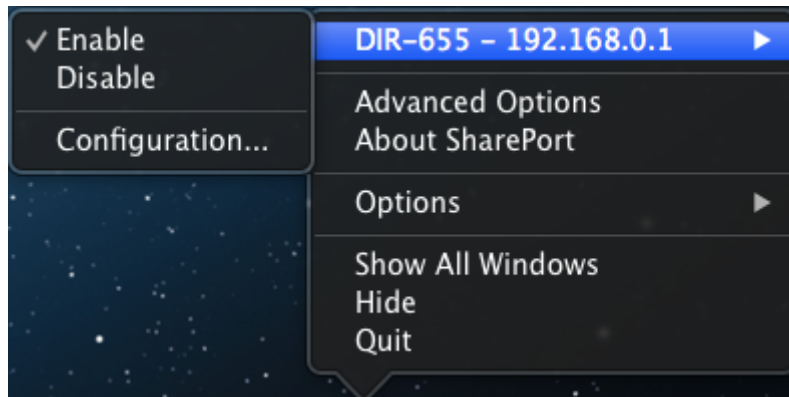
Setup

- Connect the D-Link Router to the network.
- Power on the D-Link Router.
- Wait till your Mac got IP from the D-Link Router
- Click on the  icon to open the D-Link Network USB Utility
- Right-click on  at dock on the desktop. A window below would pop up to display the D-Link Router.



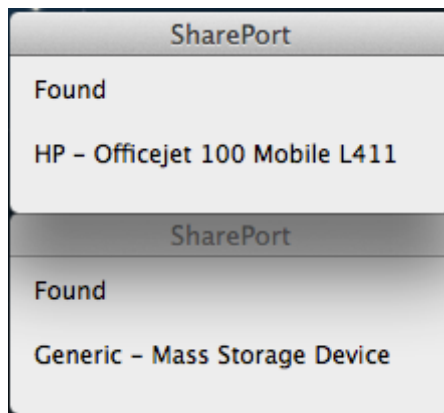
Enable Network USB on the D-Link Router

- Click on the D-Link Router.
- Click on **Enable**.
- The  will become the  icon.




Connect USB Devices on the D-Link Router

- The D-Link USB Utility automatically detects from each USB device connected. A pop up window will show up for each detected USB device.

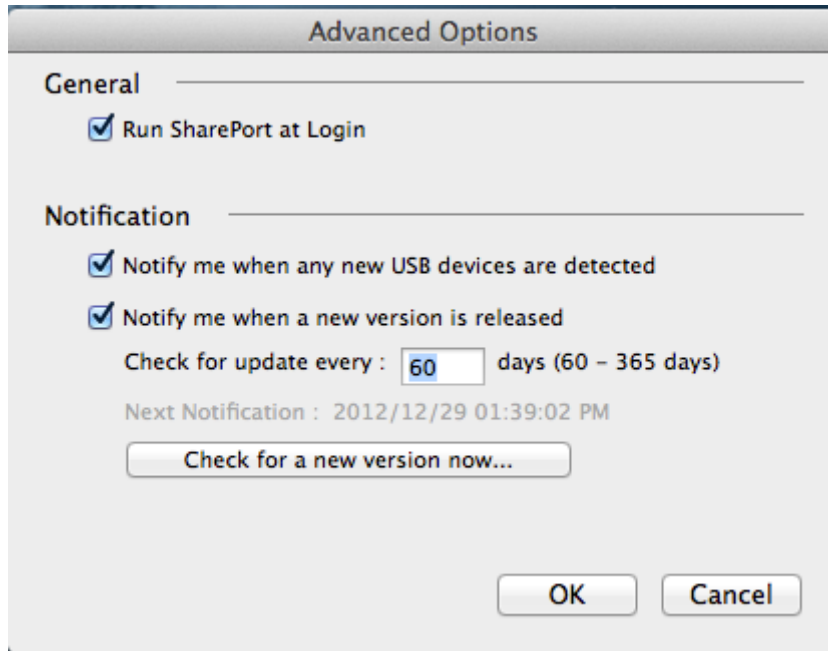


Open D-Link SharePort

- Right click on the  icon.
- Click on **Show All Windows**.
- The D-Link Network USB Utility displays the connected USB devices on the network.



- Advanced Options can be set by clicking on **Advanced Options**.

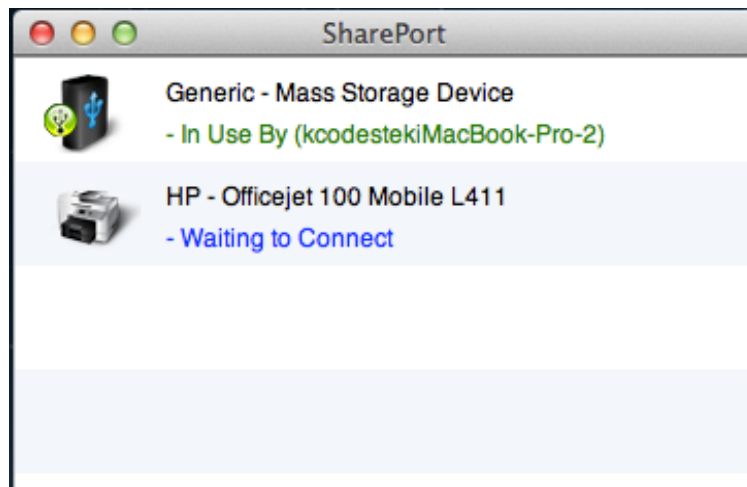


Virtual Connect and Disconnect

- Move the cursor to **Waiting to Connect** and click on **Connect** to virtually connect a USB device.



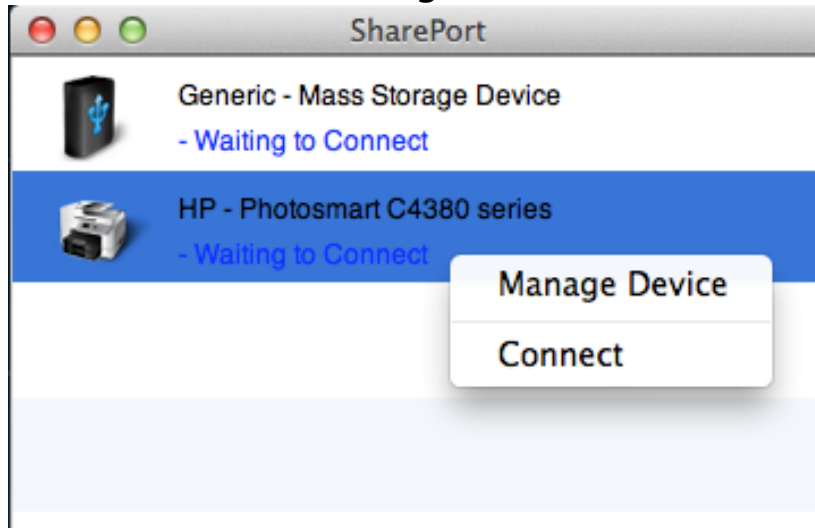
- The D-Link Network USB Utility displays which user is virtually connecting this USB device.



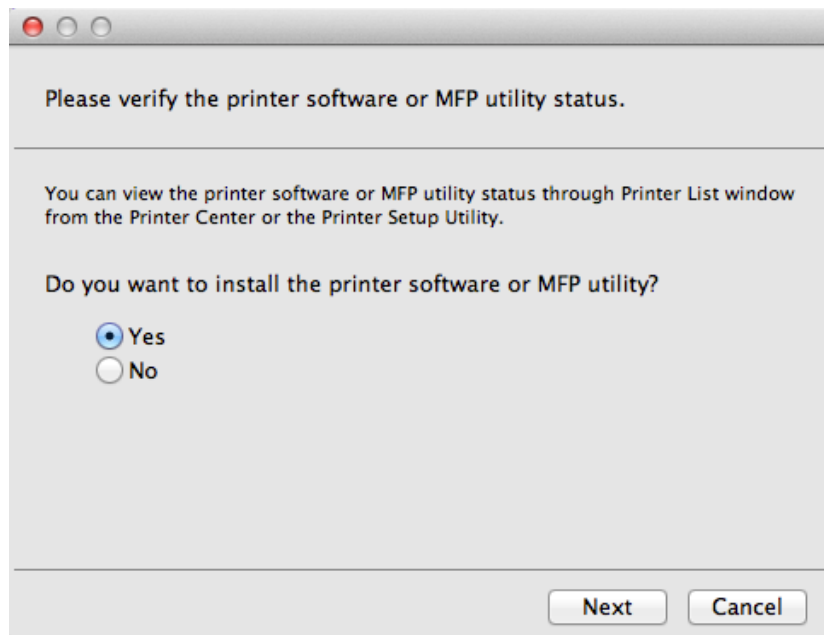
You can then move the cursor to **In Use By (Owner)** and click **Disconnect** to virtually disconnect the USB device.

Using a Multifunctional Printer

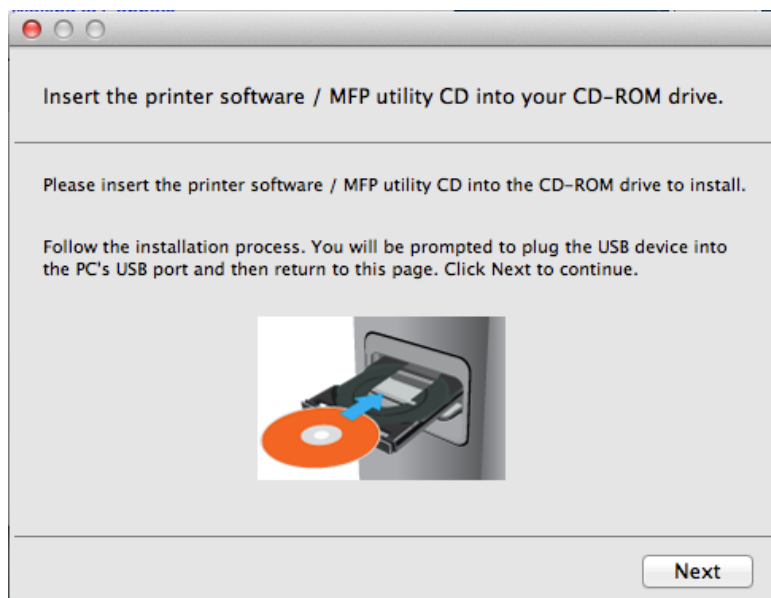
- Move the cursor to **Waiting to Connect** and click on **Manage Device**.



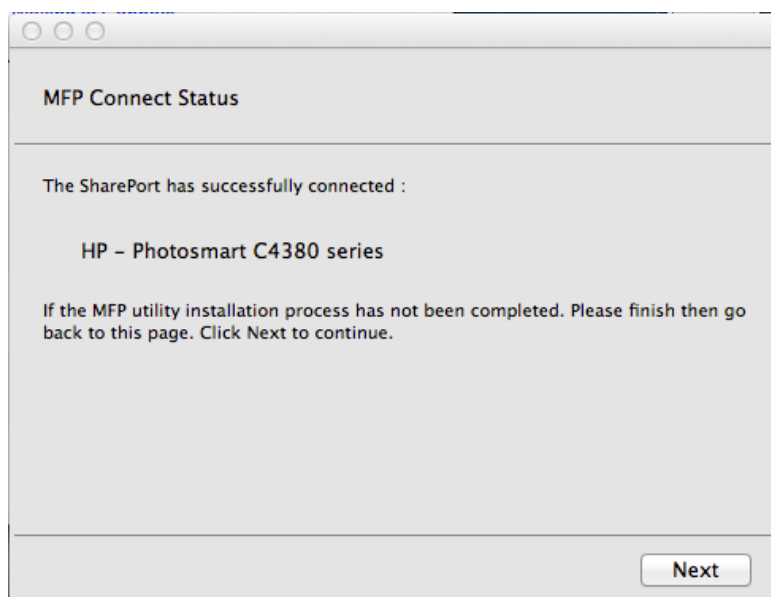
- Choose **Yes** on the question “**Do you want to install the printer software or MFP utility?**” and click **Next**



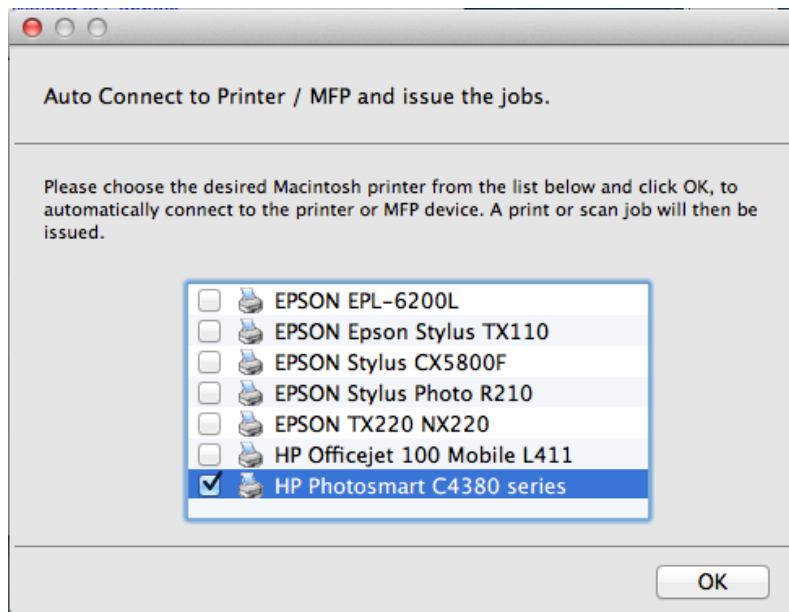
- Insert the CD-ROM of the multifunction printer and follow the instructions to install the multifunction printer's driver. When the installation process prompts you to connect the multifunction printer to your Mac, click **Next**.



- Use the D-Link Network USB Utility to virtually connect to this multifunction printer then click **Next**.



- Choose the printer driver that you want D-Link Network USB Utility to auto-connect when you print.



Using a Scanner

- Move the cursor to **Available to Use** and click **Scan Now**

