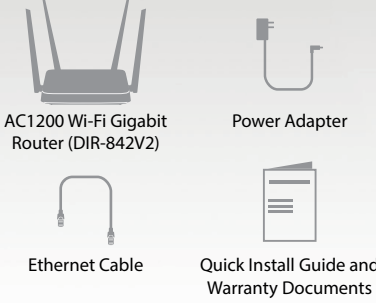


D-Link®

D-Link®
DIR-842V2
AC1200 Wi-Fi
Gigabit Router

Minimum Requirements
For Setup using Web Interface:
Computer with:
+ Internet Explorer® 10, Firefox®
44, Chrome™ 48, Safari 9, or
Microsoft Edge
+ Wired or wireless Ethernet
adapter
For Internet Access:
+ Subscription with an Internet
Service Provider (ISP)

What's in the Box



D-Link®
DIR-842V2



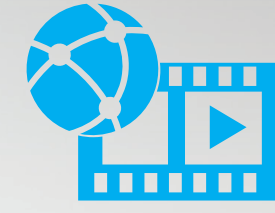
DUAL BAND **AC1200**



MEDIUM HOME



WI-FI



STREAMING AND
SURFING

D-Link®
DIR-842V2
AC1200 Wi-Fi
Gigabit Router

Features

- + IEEE 802.11ac, 802.11n, 802.11g, 802.11b
- + AC1200 speeds up to 300 Mbps (2.4GHz) + 867 Mbps (5GHz)¹
- + 4 x 5 dB external antennas
- + MU-MIMO technology
- + Wi-Fi Protected Setup™ (WPS) Push Button
- + IPv6 support
- + VLAN support
- + Gigabit LAN and Internet (WAN) ports
- + Latest WPA3 Wi-Fi security with 128-bit encryption
- + Router, Access Point, Repeater, WISP Repeater, Wireless Client modes



4 Antennas

Internet Port
Plug your internet cable in here

Reset Button

WPS Button

Power Connector

Ethernet Ports
Connect up to 4 wired devices



AC1200 SPEEDS¹



DUAL BAND



GIGABIT PORTS



MU-MIMO TECHNOLOGY



WPS



MULTIPLE MODES

11AC DUAL BAND WIRELESS



2.4 GHz 5 GHz
11AC technology features two wireless bands to deliver low interference, high-speed bandwidth to all your devices.

AC1200 Wi-Fi Gigabit Router

DIR-842V2



Maximum wireless signal rate derived from IEEE 802.11ac specifications. Actual data throughput will vary. Network conditions and environmental factors, including volume of network traffic, building materials and construction, and network overhead, lower actual data throughput rate. Environmental factors may adversely affect wireless signal range. Up to 1200Mbps wireless speed achieved when connecting to other 802.11ac devices. Manufacturer's speed and range are for comparison purposes only. Product specifications, features, and design are subject to change without notice, and actual product appearance may differ from that illustrated on this package. See inside package for necessary details.

©2020 D-Link Corporation/D-Link Systems, Inc. All rights reserved. D-Link and the D-Link logo are trademarks or registered trademarks of D-Link Corporation or its affiliates in the United States and/or other countries. Other trademarks or registered trademarks are the property of their respective owners. Microsoft, Windows, Xbox and Internet Explorer are registered trademarks of Microsoft Corporation in the United States and/or other countries. Intel is a registered trademark of the Intel Corporation in the United States and/or other countries. Mac and Safari are trademarks of Apple Inc., registered in the United States and other countries.

Registered office:
D-Link Europe Ltd,
First Floor, Ardenis Building,
Odyssey Business Park,
West End Road,
South Ruislip, HA4 6QE,
United Kingdom
www.dlink.com
Tech Support:
eu.dlink.support

Ver 1.00(EU)
2020/11/03
305x265x61mm

Upgrade your network to the
power and speed of 1 AC Wireless

AC1200 Wi-Fi Gigabit Router

Speeds up to 300 Mbps (2.4GHz) + 867 Mbps (5GHz)¹
High bandwidth Wi-Fi signal to multiple devices at the same time.

MU-MIMO Technology
Add devices to your network with the push of a button.

Wi-Fi Protected Setup
Can be used as Wi-Fi router, Access Point, Repeater, WISP Repeater, or Wireless Client.

Multiple Modes
Ready for connection to high-speed devices and broadband.

Gigabit Ethernet Ports
Like having two Wi-Fi networks, connect streaming, and social media.

Simultaneous Dual Band
Enough bandwidth for internet surfing, video chats, streaming, and social media.

867 Mbps (5GHz) + 300 Mbps (2.4GHz)¹
High bandwidth Wi-Fi signal to multiple devices at the same time.

MU-MIMO Technology
Add devices to your network with the push of a button.

Wi-Fi Protected Setup
Can be used as Wi-Fi router, Access Point, Repeater, WISP Repeater, or Wireless Client.

Multiple Modes
Ready for connection to high-speed devices and broadband.

Gigabit Ethernet Ports
Like having two Wi-Fi networks, connect streaming, and social media.

Simultaneous Dual Band
Enough bandwidth for internet surfing, video chats, streaming, and social media.

867 Mbps (5GHz) + 300 Mbps (2.4GHz)¹
High bandwidth Wi-Fi signal to multiple devices at the same time.

MU-MIMO Technology
Add devices to your network with the push of a button.

Wi-Fi Protected Setup
Can be used as Wi-Fi router, Access Point, Repeater, WISP Repeater, or Wireless Client.

Multiple Modes
Ready for connection to high-speed devices and broadband.

Gigabit Ethernet Ports
Like having two Wi-Fi networks, connect streaming, and social media.

Simultaneous Dual Band
Enough bandwidth for internet surfing, video chats, streaming, and social media.

867 Mbps (5GHz) + 300 Mbps (2.4GHz)¹
High bandwidth Wi-Fi signal to multiple devices at the same time.

MU-MIMO Technology
Add devices to your network with the push of a button.

Wi-Fi Protected Setup
Can be used as Wi-Fi router, Access Point, Repeater, WISP Repeater, or Wireless Client.

Multiple Modes
Ready for connection to high-speed devices and broadband.

Gigabit Ethernet Ports
Like having two Wi-Fi networks, connect streaming, and social media.

Simultaneous Dual Band
Enough bandwidth for internet surfing, video chats, streaming, and social media.

867 Mbps (5GHz) + 300 Mbps (2.4GHz)¹
High bandwidth Wi-Fi signal to multiple devices at the same time.

MU-MIMO Technology
Add devices to your network with the push of a button.

Wi-Fi Protected Setup
Can be used as Wi-Fi router, Access Point, Repeater, WISP Repeater, or Wireless Client.

Multiple Modes
Ready for connection to high-speed devices and broadband.

Gigabit Ethernet Ports
Like having two Wi-Fi networks, connect streaming, and social media.

Simultaneous Dual Band
Enough bandwidth for internet surfing, video chats, streaming, and social media.

867 Mbps (5GHz) + 300 Mbps (2.4GHz)¹
High bandwidth Wi-Fi signal to multiple devices at the same time.

MU-MIMO Technology
Add devices to your network with the push of a button.

Wi-Fi Protected Setup
Can be used as Wi-Fi router, Access Point, Repeater, WISP Repeater, or Wireless Client.

Multiple Modes
Ready for connection to high-speed devices and broadband.

Gigabit Ethernet Ports
Like having two Wi-Fi networks, connect streaming, and social media.

Simultaneous Dual Band
Enough bandwidth for internet surfing, video chats, streaming, and social media.

867 Mbps (5GHz) + 300 Mbps (2.4GHz)¹
High bandwidth Wi-Fi signal to multiple devices at the same time.

MU-MIMO Technology
Add devices to your network with the push of a button.

Wi-Fi Protected Setup
Can be used as Wi-Fi router, Access Point, Repeater, WISP Repeater, or Wireless Client.



D-Link®