

## DP-303

### Ethernet Print Server with Three Parallel Ports

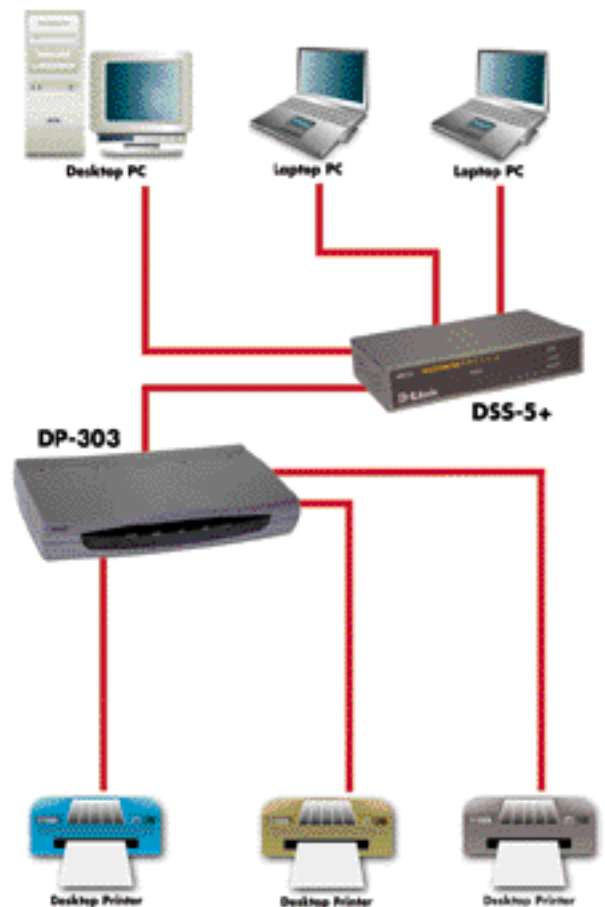
Provides the Ability and Convenience of Sharing a Printer over the Local Area Network

The D-Link DP-303 is an Ethernet print server with three parallel ports that provides the ability and convenience of sharing a printer over the local area network. The DP-303 is equipped with three bi-directional ports that are IEEE-1284 compliant and one RJ-45 Ethernet port. As a print server, the DP-303 connects directly to any bi-directional printer; and through its Ethernet port, the DP-303 is capable of connecting to an existing (Local Area Network) LAN. The D-Link DP-303 is targeted at small businesses and offices desire to connect any printer to their growing networks, easily, while providing faster document printing anywhere on the network.

The D-Link DP-303 implements DMA channel support for high-speed simultaneous printing on all three parallel ports. Multi-protocol support gives the D-Link DP-303 flexibility in mixed-LAN environments. The DP-303 utilizes PS Admin, a windows-based administrative program, for installation and setup. The DP-303 also supports the latest MIB-II (RFC-1213) for SNMP management. The DP-303 ships with an LPR software client for TCP/IP printing in Windows 95/98/ME. Finally, the DP-303 is capable of using DHCP, BOOTP, and RARP to obtain an IP address from the network.



*The D-Link DP-303 is an Ethernet print server with three parallel ports.*



*The D-Link DP-303 implements DMA channel support for high-speed simultaneous printing on all three parallel ports.*

# DP-303

## Ethernet Print Server with Three Parallel Ports

Technical Specifications	
<b>Standards</b>	<ul style="list-style-type: none"><li>● IEEE 1284 Compliant</li><li>● RFC 1213 (MIB-II) for SNMP</li><li>● IEEE 802.3 10Base-T Ethernet</li><li>● IEEE 802.3u 100Base-T Fast Ethernet</li><li>● ANS/IEEE Standard 802.3 NWay Auto-Negotiation</li></ul>
<b>Protocols Supported</b>	<ul style="list-style-type: none"><li>● TCP/IP</li><li>● IPX/SPX</li><li>● NETBEUI</li><li>● APPLETALK</li><li>● DHCP</li><li>● BOOTP</li><li>● RARP</li></ul>
<b>Frame Types</b>	<ul style="list-style-type: none"><li>● 802.2</li><li>● 802.3</li><li>● Ethernet II</li><li>● SNAP</li></ul>
<b>Management</b>	PS Admin - Windows Management Program
<b>Software</b>	LPR program for Win 95/98/ME TCP/IP printing
<b>Firmware Upgrade</b>	Windows Application
<b>Ports</b>	Three parallel ports (Female DB-25)
<b>LED's</b>	<ul style="list-style-type: none"><li>● Power</li><li>● Link/Activity</li><li>● LPT ports (LPT1, LPT2, LPT3)</li></ul>
<b>Operating Temperature</b>	0C to 50C
<b>Humidity</b>	10% - 90% Condensing
<b>Power</b>	DC 5V 1.6A
<b>EMI</b>	<ul style="list-style-type: none"><li>● FCC class A</li><li>● CE class A</li></ul>